



BULLETIN 1

World MTB Orienteering Championships 2018

Junior World MTB Orienteering Championships 2018

European Youth MTB Orienteering Championships 2018

4.-13. August 2018



CONTENT

1.	Organizers	3
2.	Event adviser	3
3.	Event Center.....	3
4.	General Information	4
5.	Location	4
6.	Program	5
7.	Classes.....	5
8.	Accommodation	5
9.	Embargoed Areas.....	6
10.	Rules	6
11.	Opportunities for training	6
Annex 1 General Map		7
Annex 2 Map embargoed areas		8



1. Organizers

IOF - International Orienteering Federation

www.orienteeing.org



ÖFOL - Austrian Orienteering Federation

Prinz Eugen Str. 12

1030 Wien, Austria

office@oefol.at

+43 (0)1 5050393

www.oefol.at



WMTBOC - organizing committee

Event director: Paul GRÜN

3912 Grafenschlag 106, Austria

+43 664 3952244

office.wmtboc2018@gmail.com

<http://www.wmtboc2018.at/>



2. Event adviser

IOF adviser: Simon Seger-Bertschi (SUI)

National adviser: Wolf Eberle

3. Event Center

Agricultural School

Landwirtschaftliche Fachschule (LFS) Edelhof

Edelhof 1,

3910 Zwettl, Austria



4. General Information

Austrian orienteering federation welcomes the participant of the World MTB Orienteering Championships, Junior World MTB Orienteering Championships and European Youth MTB Orienteering Championships 2018 in Zwettl.

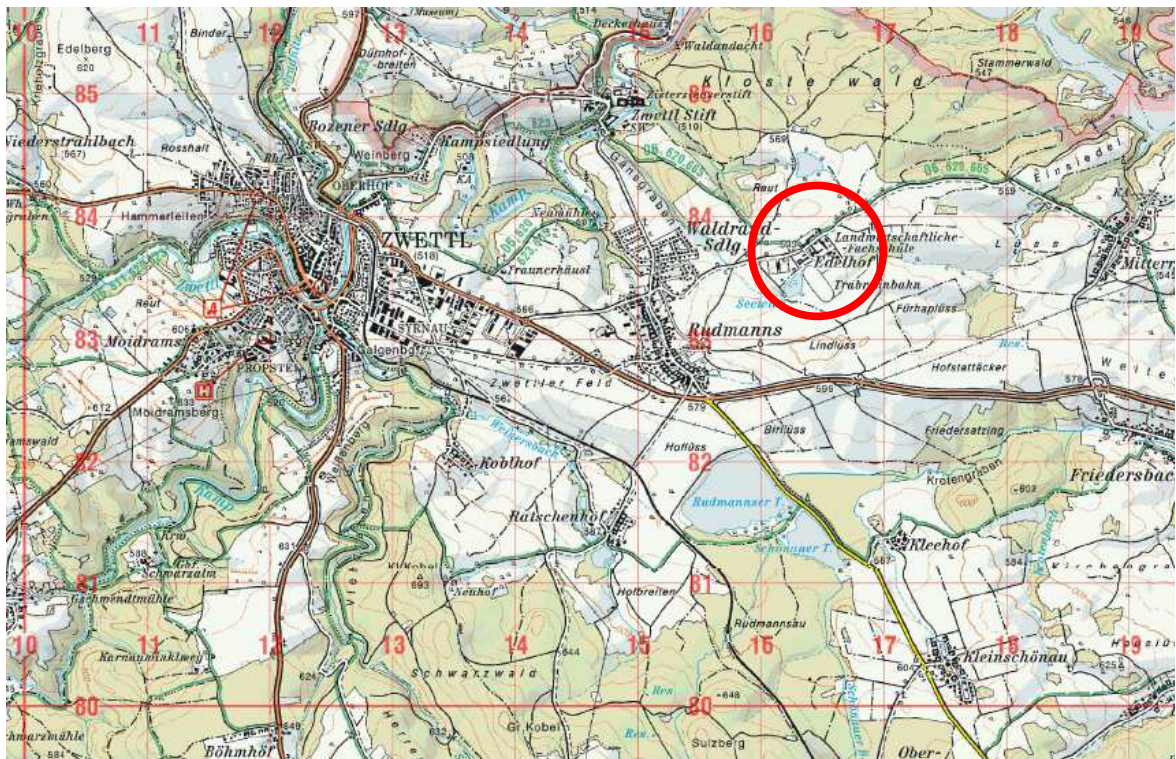
Zwettl (11.000 inhabitants, 520 m above sea level) is the Waldviertel district capital of the Austrian state of Lower Austria. It is known as the location of Zwettl Abbey, first mentioned in October 1139.

The Waldviertel (Forest Quarter) is the northwestern region of the Austrian state of Lower Austria. It is bounded to the south by the Danube, to the southwest by Upper Austria, to the northwest and the north by the Czech Republic and to the east by the Manhartsberg (537 m).

5. Location

Event center: LFS Edelhof, 3 km outside of Zwettl

15,22144; 48°36'22,8



6. Program

Saturday, 4 th Aug	Arrival & Training
Sunday, 5 th Aug	Arrival & Training, Opening Ceremony
Monday, 6 th Aug	Model Event
Tuesday, 7 th Aug	Middle distance
Wednesday 8 th Aug	Rest day
Thursday 9 th Aug	Long distance
Friday 10 th Aug	Rest day
Saturday 11 th Aug	Sprint
Sunday 12 th Aug	Relay, Closing Ceremony
Monday 13 th Aug	Departure

7. Classes

World MTB Orienteering Championships

There is one class for women and one for men. There are no age restrictions.

Junior World MTB Orienteering Championships

There is one class for women and one for men. Only competitors who are entitled to compete in the classes W20 or M20 may participate.

European Youth MTB Orienteering Championships

There is one class for women and one for men. Only competitors who are entitled to compete in the classes W17 or M17 may participate.

8. Accommodation

Different categories of accommodation in the agricultural school Edelhof (1 to 6 beds, hard floor)

Camping place near event center.



9. Embargoed Areas

Map with embargoed areas see annex 2

The areas are out of bounds for all potential participants and team members, including competitors, team leaders, coaches, doctors, escorts, and any other person who through their knowledge of the terrain may influence the result of the competitions. Permission for access into embargoed terrain has to be requested from the organizer if needed.

10. Rules

All events will be organized in accordance with the Competition Rules for IOF MTB Orienteering Events, please consult: <http://orienteering.org/mtb-orienteering/rules/>
In Austria you are not allowed to leave the roads and trails.

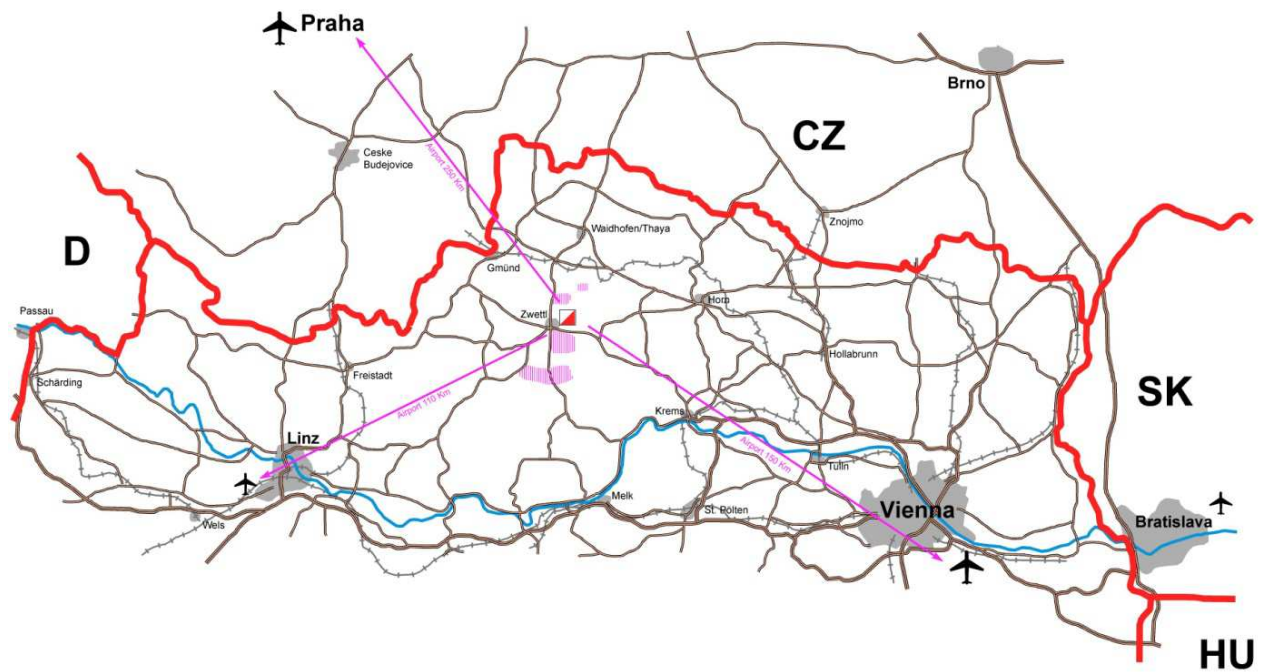
11. Opportunities for training

World Cup MTB Orienteering 2017, Round 1 and side events

Training possibilities between Vienna and Zwettl the week before World MTB Orienteering Championships 2018.

Previous orienteering maps will be available on www.wmtboc2018.at

Annex 1 General Map



Nearest International Airports:

Vienna	150 km
Bratislava	210 km
Prag	250 km
Linz	110 km

Annex 2 Map embargoed areas

