



INFORMATION NO.1

The Lithuanian Orienteering Federation and the Orienteering Sports Club "Šilas" invite everyone to the 2025 **Lithuanian Orienteering Cup competition**, which will take place on October 18-19, 2025, in Prienai.

Organizers and hosts

Organizers:

Lithuanian Orienteering Federation
Orienteering Sports Club "Šilas"



Team:

Competition Director – Audrius Deltuva
Chief Judge – Vytautas Beliūnas
Secretary – Gvidas Rūkas
Event Adviser – Vilius Aleliūnas

Contacts:

Vytautas: +37068582615
Audrius: +37068582415
Email: audriusdel@gmail.com

Date

October 18–19, 2025

Location

The competition will take place in the Prienai Šilas forest area.

Arrival links: [Google](#)

GPS coordinates:

1st day: 54.580009, 23.970453

2nd day: 54.580009, 23.970453

Competition Map and Terrain

DAY 1 Middle Distance WRE

The central and southern parts of Prienai Forest. The terrain consists mostly of medium-sized landforms, with some small features and large stream slopes. The highest slopes reach up to 30 meters. A coniferous forest with moderate to good runnability. The network of roads and trails is of medium density.

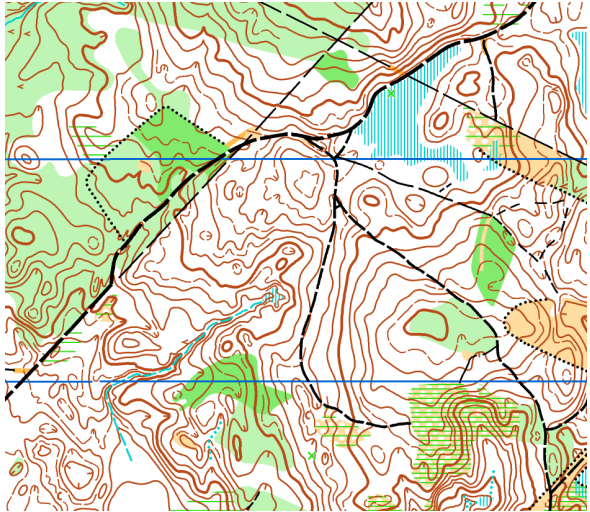
Scale: 1:10,000, contour interval 2.5 m.

For M/W 10–12 and M/W55+ categories, the scale is 1:7,500, contour interval 2.5 m. The map was completely updated in 2025 using the latest Lidar data.

Map Author – Saulius Kireillis

Old Map:

<https://maps.trails.lt/maps/Naravai.jpg>



DAY 2 Prolonged Middle Distance

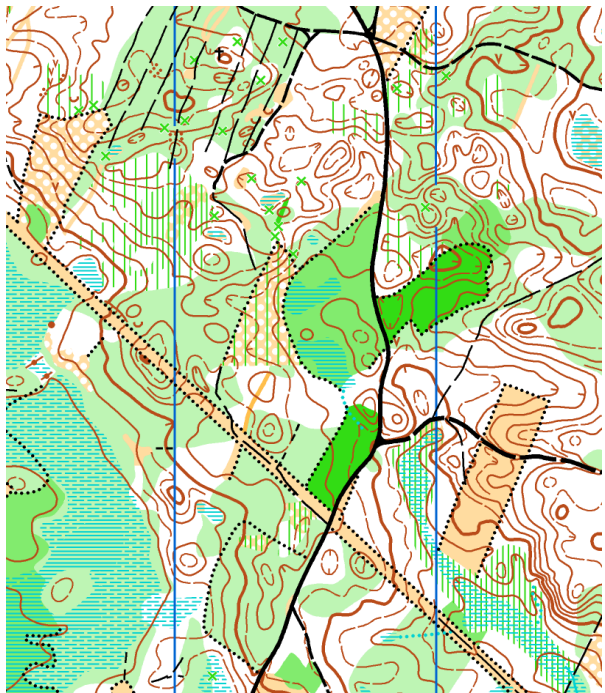
Competition Area – The central and southern parts of Prienai Forest.

The terrain consists mostly of medium-sized landforms, with some small features. The forest is predominantly coniferous with moderate runnability. The network of roads and trails is of medium density. Part of the area will be used for orienteering competition for the first time.

Map Scale: 1:10,000

For M/W 10–12 and M/W55+ categories, the scale is 1:7,500, contour interval 2.5 m.

Completely updated in 2025 using the latest Lidar data.



Competition Type

The event consists of **individual two-day overall results** on foot and by mountain bike orienteering, organized according to the **LOSF (Lithuanian Orienteering Federation)** approved orienteering competition rules. On the first day, there will be **WRE (World Ranking Event)** races for the **W/M 21 E** categories.

Age Groups and Participants

The competition will be held in the following age groups:

ME/WE, MS/WS, 10, 12, 14, 18, 20, 23, 35, 40, 45, 50, 55, 60, 65, 70, 75, 80, 85, 90, OPEN1, OPEN2.

BW/BM, BWA/BMA 12, 14, 17, 20, 23, 35, 45, 55, 65, OPEN1

Athletes with IOF Independent Athlete Status with Belarusian or Russian citizenship cannot enter and participate in this event due to national legal requirements:

https://orienteering.lt/wp-content/uploads/2025/06/English-version-_IOF-1.pdf.

Punching System

SPORTident AIR+.

Rental of SI and SIAC cards – **2 €/day**.

It is mandatory to indicate your intention to rent an SIAC card in the registration notes.

A fine equal to the cost of the SI card will be charged for a lost or unreturned card.

Registration

Applications are submitted via the **DB Sportas** system: <https://dbsportas.lt/en/varz/2025062>

Registration is open until **October 13, 2025** inclusive. After this date, registration will only be possible if space is available, with a **1.5 times higher fee**.

Fees

(Price for all days / Price for one day)

Registration Deadline	W/M 10-18	W/M 20, 65-90	WS/MS W/M 23 W/M35-60	WE/ME	BW/BM 12-20	BW/BM, BWA/BMA BW/BM 23-75
2025-09-01	17€ / 9€	21€ / 11€	32€ / 17€	36€ / 20€	17€ / 9€	36€ / 17€
2025-10-13	17€ / 9€	23€ / 12€	36€ / 19€	40€ / 22€	17€ / 9€	40€ / 22€

For athletes who have submitted individual applications, the participation fee specified by the event organizers can be paid via bank transfer or at the event location.

OPEN groups (for one day):

- For those born in 2005 or later: **9 €**
- For those born in 2004 or earlier: **17 €**

Important: The participation fee will **not be refunded** for participants who have registered but do not start the event.

The competition area is located within the **Nemunas delta regional park**.

From January 1, 2024, a mandatory **visitor ticket** has been introduced for all visitors, regardless of age. (You can find more information here: [Visitor](#)

[ticket](#)). This fee is already included in the participant's registration fee, and participants will not need to take any additional action.

The participant fee includes the Lithuanian Orienteering Federation's (LOSF) approved calendar fee for athletes with a LOSF license:

- Adult with LOSF license – 2 €/day
- Student with LOSF license – 0.5 €/day

Athletes without a LOSF license must pay an additional fee on top of the participation fee:

- Adult without LOSF license – 2 €/day
- Student without LOSF license – 0.5 €/day

You can purchase the LOSF license here:

<https://losfis.orienteing.lt/>

Payment

The participant fee can be paid on-site in cash or via bank transfer to the organizer's account listed below. Payment details for bank transfer:

IBAN: LT077300010098032980

Account holder: Orienteering Sports Club "Šilas"

Company ID: 300609431

Address: Basanavičiaus str. 14, Prienai, Lithuania

SWIFT/BIC: HABALT22

Bank: Swedbank AB

Awards

Two-day overall results. The winners of the Lithuanian Cup will be awarded trophies, while the top 3 finishers in each group will receive prizes.

Awards will be presented only to the athletes who participate personally in the award ceremony.

Additional Information

Participants are responsible for their own health and safety during the competition; for schoolchildren, responsibility lies with their coaches or accompanying persons. All competitors must have a valid medical certificate permitting them to participate in the competition.

The costs of meals, accommodation, and travel for athletes and coaches are covered by the sending organization or by the athletes themselves.

Any claims or appeals to the competition jury or organizers must be submitted within 1 hour after the participant finishes, but in any case, as soon as possible.

All participants must start with the race number provided by the organizers. Athletes who start without a race number will be disqualified.

By registering, competition participants agree that their name, surname, year of birth, team, and results will be published on the competition registration website <http://www.dbsportas.lt>, and that they may be photographed, filmed, and their location tracked in real-time during the event. This material may be used for event publicity and the promotion of sports.

Participants may contact the LOSF administration regarding the use of personal data in accordance with the current LOSF privacy policy.

Partners



Sponsors

