



**Bulletin 3**  
**IOF WORLD MASTERS SKI ORIENTEERING**  
**CHAMPIONSHIPS 2025 (WMSOC) &**  
**IOF SKI ORIENTEERING WORLD CUP ROUND 2025**  
**(SKIO WCUP)**



**Organizers:** International Orienteering Federation (IOF)  
**Host club:** Deutsche Ski-Orientierungslauf Gemeinschaft 2016 e.V.  
**Event director:** Bernd Kohlschmidt  
**Contact:** +436504153330  
kohlschmidt@yahoo.de

**IOF Event Advisor:** Milan Venhoda (CZE)  
**National controller:** Roland Kohlbacher (AUT)

**World Cup:** <https://eventor.orienteering.org/Events/Show/7895>  
**WMSOC:** <https://eventor.orienteering.org/Events/Show/8428>

**Venue/Event Center:**  
Chiemgau Arena Ruhpolding  
Biathlonzentrum 1, 83324 Ruhpolding Germany  
GPS: 47.715708, 12.647594

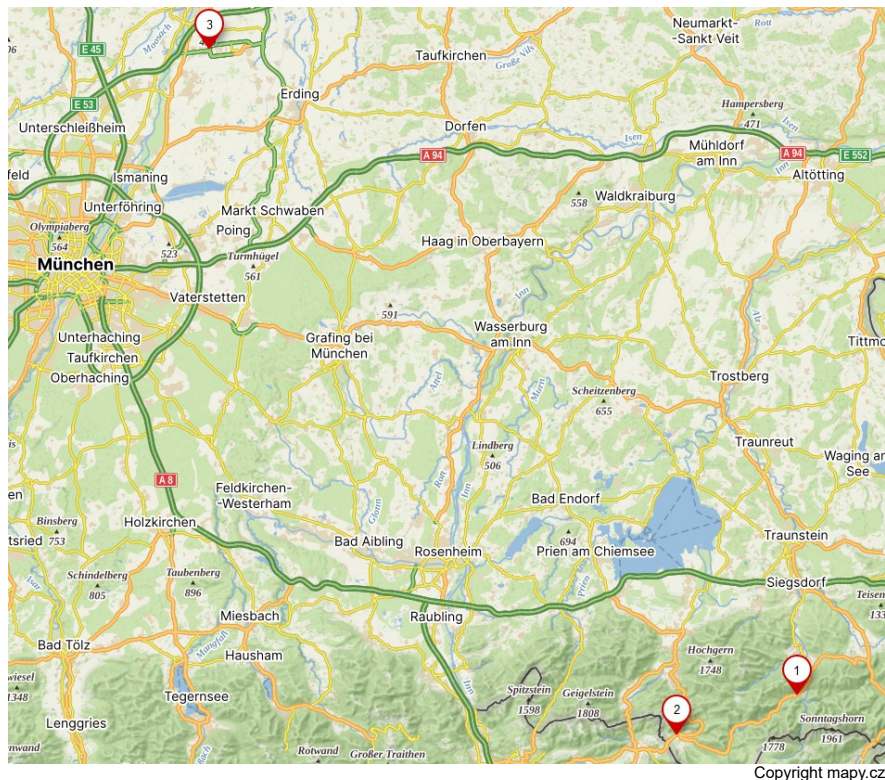
**Webcams**  
<https://www.ruhpolding.de/webcams>  
<https://reitimwinkl.panomax.com/>

## Program:

	<b>General/ Location</b>	<b>World Cup</b>	<b>WMSOC</b>	<b>W/M 12, 14, 17, 20</b>
<b>Thursday, Feb 13</b>	Arrival			
<b>Friday, Feb 14</b>	Reit im Winkl "Tourist Information"	Model Event	Model Event	Model Event
<b>Saturday, Feb 15</b>	Chiemgau Arena	Sprint	Sprint	Sprint
<b>Sunday, Feb 16</b>	Chiemgau Arena	Middle	Middle	Middle
<b>Monday, Feb 17</b>	Reit im Winkl "Festsaal"	Mass start Long	Long	Long
<b>Tuesday, Feb 18</b>	Departure			

## General map of the region:

- 1 Chiemgau Arena,
- 2 Reit im Winkl
- 3 Airport Munich



## SCHEDULE:

### THURSDAY 13/2

19.00-21.00 Event office is open – accreditation Chiemgau Arena

### FRIDAY 14/2

09.00-21.00 Event office is open – accreditation Chiemgau Arena  
 10.00-14.00 Model Event Reit im Winkl  
 “Tourist Information”  
 15.00 WCup Sprint entry deadline IOF Eventor  
 19.00 Team official meeting Chiemgau Arena

### SATURDAY 15/2

09.00-20.00 Event office is open Chiemgau Arena  
 10.00 First start WCup - Sprint W/M Chiemgau Arena  
 12.50 Prize giving ceremony WCup Chiemgau Arena  
 13.00 First start WMSOC, Open Chiemgau Arena  
 15.00 WCup Middle entry deadline IOF Eventor  
 16.00 Prize giving ceremony WMSOC Chiemgau Arena  
 19.00 Team official meeting Chiemgau Arena

### SUNDAY 16/2

09.00-20.00 Event office is open Chiemgau Arena  
 10.00 First start WCup - Middle W/M Chiemgau Arena  
 12.50 Prize giving ceremony WCup Chiemgau Arena  
 13.00 First start WMSOC, Open Chiemgau Arena  
 15.00 WCup Long entry deadline IOF Eventor  
 16.00 Prize giving ceremony WMSOC Chiemgau Arena  
 19.00 Team official meeting Chiemgau Arena

### MONDAY 17/2

09.00-09.30 Event office is open “Festsaal” Reit im Winkl  
 09.30 Mass start WCup - Long M “Festsaal” Reit im Winkl  
 09.40 Mass start WCup - Long W “Festsaal” Reit im Winkl  
 11.30 First start WMSOC, Open “Festsaal” Reit im Winkl  
 12.30 Prize giving ceremony WCup “Festsaal” Reit im Winkl  
 15.30 Prize giving ceremony WMSOC “Festsaal” Reit im Winkl

## Summary of entries (January 14<sup>th</sup> 2025):

Country	WCup	WMSOC
Austria	7	19
Bulgaria	3	8
Czech Republic	12	6
Estonia	10	2
Finland	12	29
France		3
Germany	4	24
Great Britain		3
Hungary		1
Japan	4	
Italy		2
Latvia	7	14
Lithuania	4	10
Norway	16	
Poland		5
Romania		1
Slovenia		4
Sweden	12	11
Switzerland	10	12
Ukraine		3
United States	1	5

## Accommodation

<https://www.ruhpolding.de/>

<https://www.reitimwinkl.de/>

The accommodation is the responsibility of the national teams and WMSOC participants.

## Transport

The organizers do not offer transportation. **Please pay the parking fees in Reit in Winkl!** Parking inside the Chiemgau arena is included in the entry fee. (When this parking lot is occupied, then please pay the parking fees at the outside parking lots.)

All competitions can be reached by public transports:

Fast train between Munich – Salzburg to train station Übersee and then by bus to Reit im Winkl.

Local train via Traunstein to Ruhpolding:

<https://www.brb.de/de/fahrplaene/linienuebersicht-fahrplaene/linie/rb-53>

Public bus from Ruhpolding to Chiemgau arena and to Reit im Winkl:

[https://www.reitimwinkl.de/fileadmin/reitimwinkl/Dateien\\_Tourist\\_Info\\_Seite/Fahrplaene/9506\\_Reit\\_im\\_Winkl\\_-\\_Ruhpolding\\_-\\_Inzell\\_Dez-Apr.pdf](https://www.reitimwinkl.de/fileadmin/reitimwinkl/Dateien_Tourist_Info_Seite/Fahrplaene/9506_Reit_im_Winkl_-_Ruhpolding_-_Inzell_Dez-Apr.pdf)

### **Waxing facilities**

Waxing facilities are available at the Chiemgau arena. Containers have electrical connections, are heated, ventilated and lockable. Price per unit is **150,00 €** from Thursday to Monday. Order until 23.12.2024 via IOF Eventor.

### **First aid**

First aid service and transport from the forest will be available in the arena.

### **Food and drink**

The Cafe will be open in the Chiemgau arena. In front of the "Festsaal" will be available hot meals, pies, snacks, hot and cold drinks too.

### **WCup Team officials meeting (TOM)**

The Team officials' meeting will be held at the Chiemgau arena 1st floor the evening before each respective race. The slides are then published in the IOF Eventor.

### **Classes and participation:**

#### **World Cup**

Each Federation may enter up to 6 men and 6 women in each competition in World Cup. In addition, each Federation may enter up to 2 women and 2 men, who qualify for the Women U23 and Men U23 classes, respectively. The organizing Federation may have two additional competitors as official World cup competitors in the individual competitions. A competitor must have a valid IOF Athlete Licence.

#### **WMSOC**

W/M 35,40,45,50,55,60,65,70,75,80,85

#### **Open competition for young people**

W/M 12, 14, 17, 20

### **Entries and entry deadlines**

WCup and WMSOC entries are to be done via IOF Eventor.

WCup Team size entry deadline: until 23.12. 2024

WCup Team payment deadline: until 14.01. 2025

WCup Team name entry deadline: until 05.02. 2025

WMSOC early bird entry deadline including payment: until 14.11. 2024

WMSOC regular entry deadline including payment: until 14.01. 2025

WMSOC late entry deadline including payment: until 07.02. 2025

W/M 12, 14, 17, 20 including payment: until 07.02. 2025

The entries are not valid until the full payment is received.

### Entry fees WCup

Fee type	Regular entry until 23.12.2024 and payment until 14.1.2025	Late entry until 31.1.2025 and payment until 31.1. 2025
Accreditation fee per competitor	60,00 €	60,00 €
Accreditation fee per team official	25,00 €	25,00 €
Entry fee per competition	70,00 €	105,00 €

The accreditation fee include the model event, team official meetings, ski test area and arena access. Only team officials with Accreditation allowed at the coaching zones.

### Entry fees WMSOC

	Early bird entry including payment until 14.11. 2024	Regular entry including payment until 14.01. 2025	Late entry including payment until 07.02. 2025
Accreditation fee	60,00 €	60,00 €	60,00 €
Entry fee per competition	20,00 €	30,00 €	45,00 €

The entry fee include the model event, ski test area and arena access.

### Entry fees Young people W/M 12, 14, 17, 20

Entry via OManager with fee per competitor per competition **15,00€**

### Payment

WMSOC entries have mandatory payment using Debit/Credit Card in Eventor. For the WCup the National Federations will receive payment information in a separate email. (Accreditation fee deducted manually for WCup competitors already paid accreditation fee for WMSOC.)

### Punching system

SPORTident touch free punching (within ~30 cm) will be used.

All competitors have to use an ActiveCard (SIAC).

Rental will be possible. Order via Eventor for 15,00 € per SIAC for the entire event. WCup competitors will get an additional back-up SIAC from the organizers.

There will be no punching station at the finish line. The time will be registered automatically via a loop antenna as the SIACs passes the line. After crossing the finish line, you will be directed to read-out your SIAC.





### **Number bibs**

Number vests will be delivered at the team leader meeting for WCup classes. Number vests will be picked up after finishing by organisers every day.

Number vests will be delivered in the event office during accreditation for Masters. The same vests will be used for all three races.

### **GPS**

GPS tracking is used only in the WCup classes. Wearing GPS tracker is mandatory for all participants in these classes. GPS tracker will be placed into the number vest pocket at the pre-start and collected at the finish.

### **Quarantine**

There is start quarantine for Sprint and Middle distance for all athletes competing in WCup. Details will be announced at the team official meeting.

### **Map scales, vertical contour intervals and new symbols**

Maps size (all days): A4

Contour intervals (all days): 5m

Maps printed on waterproof paper

Map scale Sprint 1:5000

Map scale Middle 1:7500

Map scale Long 1:15000 (from age class 45 and above 1:10000)

Newest version of SkiO symbols **ISSkiOM 2019 Revision 3** including fences, one way direction and compulsory tracks will be in the map and controlled during the competition. (<https://orienteering.sport/iof/mapping/>)

### **Map exchange**

There will be a map exchange at the WCup mass start and in Masters Long distance (W/M35, W/M40).

### **Terrain, altitude, climate and hazards**

The terrain is moderate hilly with a mixture of residential, forest and meadow areas between 750-850m above sea-level. There is usually snow in February. In case of little snow the races take place on the artificial snow tracks.

The Organizer accepts no liability in case of bad snow situation.

### **Tracks in the territory**

This informations will be published in bulletin 4 or during the TOM.

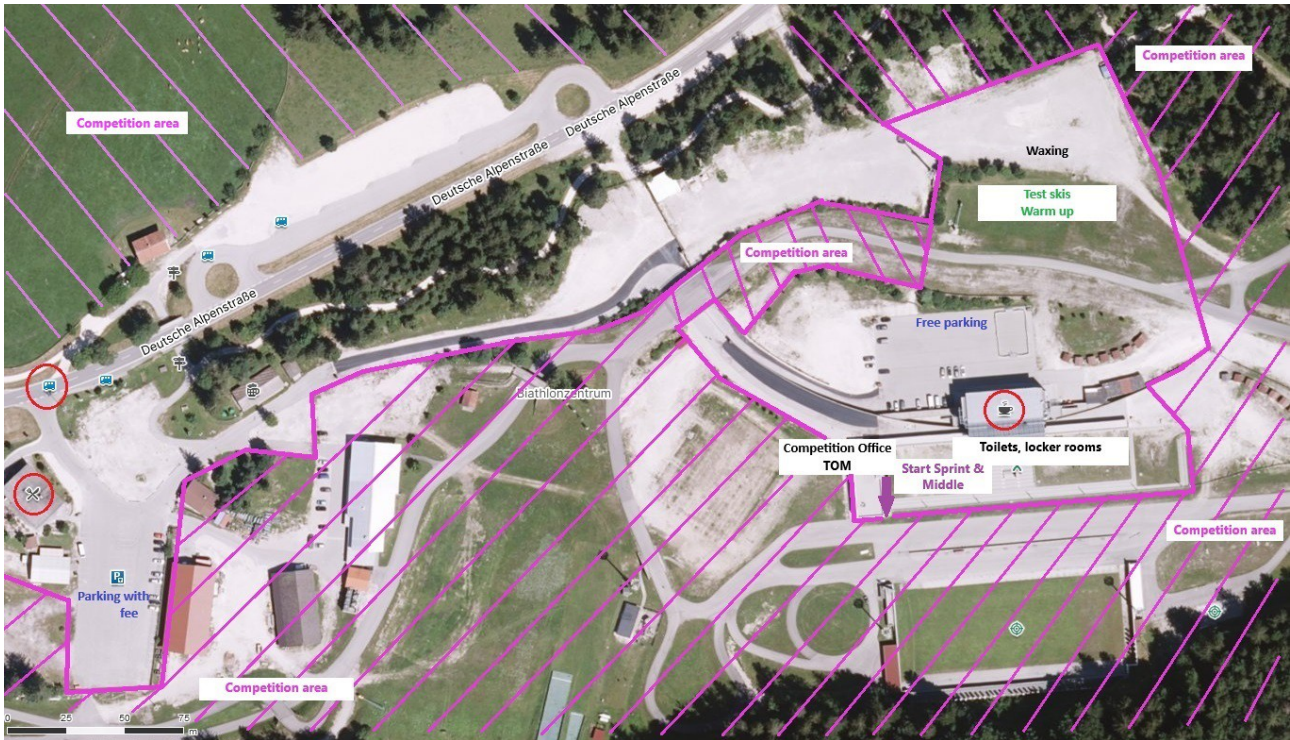
### **Equipment control**

There will be no equipment control at Sprint and Middle distance. At the Long distance there will be one equipment control nearby the coaching zone/ map change.

## Winning time and approximate length of each course

This information will be published in bulletin 4 and are subject to changes until the TOM. Maximum skiing time: Sprint 60min, Middle 120min, Long 150min.

## Map of Chiemgau Arena Ruhpolding (GPS 47.715347, 12.647371)



Copyright mapy.cz

## Map of Reit im Winkl (GPS 47.675285, 12.466217)



Copyright mapy.cz



## Results

Live Results and official results will be published on IOF Eventor.

<https://orienteering.sport/live/>

## Complaints and protests

Complaints should be submitted in writing to the **Competition Office** at the latest **30 minutes** after the last finisher in the class it concerns. Complaints can only be submitted by a team official or a competitor.

The event director will deal with the complaint and take a decision on the question. The person making the complaint will be informed of the decision. Complaints may be made free of charge. Should the person making the complaint not be satisfied with the decision a protest may be submitted. Protests should be submitted in writing within 15 minutes of the complainant receiving notice on the original decision. Protests are dealt with by the jury. The fee for a protest is 50€. This fee will be repaid should the jury approve the protest.

## Jury

Hansruedi Haeny (Switzerland)

Carl Fey (US)

Jan Pecka (Czech republic)

## Embargoed areas:

### Ruhpolding

In the Chiemgau Arena the use of the permanent roller tracks without a map is permitted until **October 31 2024**. A registration and payment in the Arena office is obligatory! From then it is completely embargoed.

<https://mapy.cz/s/fasonuvevu>

### Reit im Winkl

The entire plateau Reit im Winkl is embargoed area. Access to all accommodations via road is allowed.

<https://mapy.cz/s/pusotefako>

## Ban on fluoride waxing

It is prohibited to use any Fluor wax products in all classes. Test can be carried out.

## Anti-Doping

Doping is forbidden. The IOF Anti-Doping Rules apply to all age classes of this event and the IOF Council may require doping control procedures to be conducted. It is the responsibility of competitors to obtain any required TUE (therapeutic use exemption) certificate.

## Visa information

Germany is a member of the Schengen area, meaning that travellers coming from other Schengen countries and a lot of other countries do not need a visa to enter Germany. Please check for your own country. For a visa invitation please contact the organizer.

### Non-liability

All participants take part at their own risk. All participants are responsible for insurance. Promoter, host, the owner of the forest, land owner and authorities assume no liability for damages that go beyond existing insurances.

### Privacy

With submission of entry, participants agree to the press and internet coverage of their entry data, results and pictures and publication of these data in start and result lists.

### Partner



### Partner event

