



**Bulletin 1 for Long Distance World Ranking Event.  
Sunday 23th October 2016  
Canterbury, New Zealand**

The World Ranking Event for M21E and W21E grades is part of the Canterbury and South Island Championships 3-day event, and takes place on the day of the Long Distance Championship.

**Organising Team**

Organiser: Peninsula And Plains Orienteers Inc.  
Event Director: Iona Powell  
Event Controller: Tim Wright  
Event Planner: Al Cory-Wright

**IOF Event Adviser: Graham Teahan**

Webpage: <http://alpineo2016.papo.org.nz/>  
Email: [entries@papo.org.nz](mailto:entries@papo.org.nz)  
Phone: +64 3 331 8521  
Address: PO Box 824, Christchurch 8140, New Zealand

Venue: Craigieburn, Canterbury  
Google Maps link: <https://goo.gl/maps/iNTu3AW9cBT2>  
GPS: 43°10'48.6"S 171°41'29.4"E  
Driving Time from Christchurch – 90 minutes

Map: Hogs Back  
Fieldwork and cartography: Nick Hann  
A new map in an area never used for orienteering.  
Scale: 1:15 000  
Contour Interval: 5m

Classes: M21E, W21E

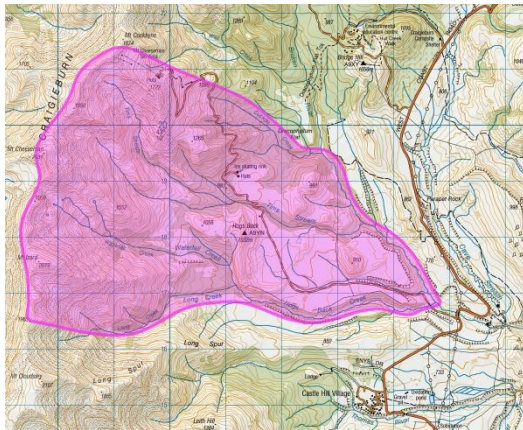
Expected winning time: M21E 90mins; W21E 75mins



**Terrain description:**

Vegetation is approximately 50% alpine tussock land and 50% beech forest. There is significant variation in relief across the area, including flat plains, steep-sided ravines and gorges, large cliffs, steep slopes and significant climbs. The map ranges in elevation from 800 to 1300 m above sea level. The beech forest contains both highly runnable and very thick and slow sections. Numerous rock features are spread across the area.

**Embargoed Area:** The area bounded by Long Creek, Hogs Back Creek, Broken River, Cuckoo Creek, Mt Cheeseman Ski Area and the Cragieburn Range main ridgeline.



Online Entry form: <http://alpineo2016.papo.org.nz/>

Entry Fees per day until 07/10/2016: *Expected Senior NZ\$25-35*

Late entry fees apply after 07/10/2016. Late entries will be accepted at the controller's discretion up to the time that the start list is finalised. Absolutely NO entries will be accepted after 16/10/16.

Payment from NZ competitors to be made by Direct Credit prior to 07/10/2016.

Payment from overseas competitors may be made on the first day of competition.

Instructions provided when entries are submitted.

Accommodation and transport is the competitor's responsibility. Limited lodge-style accommodation with bunk rooms will be available to book when entering online.

Food and drinks may be for sale at the event.

Weather can be variable in October. Be prepared for hot and dry, or cold and wet. Snow is a possibility.

Start times: M21E and W21E start times will be from 10:00am.

