

ASOM 2025 WORLD RANKING EVENT

TURNHOUT - 25, 26, 27/04/2025



BULLETIN 1





WRE

On behalf of the International Orienteering Federation, Orienteering Vlaanderen invites elite orienteers from around the world to 2 Sprint World Ranking Events in Turnhout, Belgium.

On Friday & Saturday 25 & 26 April there will be a WRE Knock Out Sprint.

On Sunday 27 April there will be a WRE Sprint.

ASOM

This event is part of the Antwerp Sprint Orienteering Meeting (ASOM) which is a 3 day sprint orienteering festival in Belgium.

PROGRAM

FRIDAY APRIL 25

18h00 - KO Sprint Qualification

SATURDAY APRIL 26

13h00 - KO Sprint Quarter Finals

15h45 - KO Sprint Semi Finals

17h15 - KO Sprint Final

SUNDAY APRIL 27

10h00 - Sprint World Ranking Event

GENERAL INFORMATION

ORGANISATION

Main Organizer:
KONO
Westpoort 68,
2070 Zwijndrecht, Belgium

Event Director
Jeremy Genar, jeremy@asom.be, +32 477 47 85 33

Administration & Finances
Anneleen Aerts, info@asom.be

Website:
www.asom.be

COMPETITION CENTRE

The Competition Center will be the same for Saturday and Sunday.

Address:
Heilig Graf
Baron Frans du Fourstraat 6
2300 Turnhout

The Competition center for Friday will be at the Athletics Track of Turnhout.

Address:
KFC Turnhout
Parklaan 50
2300 Turnhout

IOF EVENT ADVISOR

Sir Gilles De Neyer (Belgium)
+32 493 56 52 72



WRE GENERAL INFORMATION

GENERAL INFORMATION

ENTRIES

Entries for all participants are via Opunch.

Registrations for the 2 WRE race (KO on FRI and SAT and Sprint on SUN):
<https://www.opunch.org/in/event/2855>

All Elite orienteers have to register via Eventor as well.
Saturday: <https://eventor.orienteering.org/Events/Show/8287>
Sunday: <https://eventor.orienteering.org/Events/Show/8288>

If you want to register a whole team, please contact our Event Officer Anneleen to make your work easier!

ENTRY FEE

The Early Bird entry deadline is 02/02/2025 at 23:59
Entry fee for Friday Quali, Saturday WRE and Sunday WRE: € 44
€ 27 for FRI + SAT and € 17 for SUN.

The normal entry deadline is 04/04/2025 at 23:59
Entry fee for Friday Quali, Saturday WRE and Sunday WRE: € 52
€ 32 for FRI + SAT and € 20 for SUN.

The late entry deadline is 18/04/2025 at 23:59
Entry fee for Friday Quali, Saturday WRE and Sunday WRE: € 62
€ 37 for FRI + SAT and € 25 for SUN.

BANK ACCOUNT

KONO BV - EOC2025

BE87 7330 6722 7494
BIC: KREDBEBB
KBC Bank, Havenlaan 2, 1080 Brussels



FOOD & DRINKS

During the competition we will offer food and drinks.

Friday: Drinks (softdrinks, coffee, beer, ...), cake

Saturday: Drinks (softdrinks, coffee, beer, ...), sandwiches, cake, ...
On Saturday we offer pasta from 18h00 in the arena.

Sunday: Drinks (softdrinks, coffee, beer, ...), sandwiches, hotdogs, cake

HOTEL

We recommend to book your accommodation quite some time in advance as there is limited hotel capacity in Turnhout.

Corsendonk Hotels is our partner for accommodation. They have very good hotels in the city center of Turnhout. Please use the Promotion code ASOM2025 when making a booking at **Hotel Turnova** and receive a 5% discount.

Make sure to book via <https://www.corsendonkhoteles.com/hotels/corsendonk-turnova/>

If you have any questions about your booking at Corsendonk please contact info@asom.be or info.turnova@corsendonkhoteles.com. Make sure to mention ASOM2025 when having contact with the hotel.

Other accommodation in and around Turnhout:

For groups:

[Svilla](#)
[Klein Engelandhoeve:](#)
[De Lindehoeve:](#)
[Ochtendgloren](#)
[De Hoge Rielen \(hostel in Lichtaart\)](#), cheap, ideal for youth

There are also many hotels available in the village of **Kasterlee**.

PROGRAM

Friday April 25

16:00 - Opening Event Office Finish
16:30 - Quarantine (Elites) opens
17:30 - First start KO Qualification races

Saturday April 26

10:30 - Opening Event Office at Finish
11:30 - Quarantine Elites Opens
12:30 - Quarter Final Men
13:30 - Quarter Final Women
15:30 - Semi Final Men
16:00 - Semi Final Women
17:15 - Final Men
17:30 - Final Women
17:40 - Flower Ceremony

Sunday April 27

8:00 - Opening Event Office at Finish
9:45 - Closing Quarantine area
10:00 - First start
12:30 - Last finish
13:00 - Prize Giving Ceremony

Start list will be available on **Tuesday April 22**
at <http://www.helga-o.com/start/> and via www.asom.be



MAP

All races will be held on a revised map of Turnhout city.

Turnhout
Scale: 1/4.000
Contours: 2m
Edition April 2025
Mapper P. Bleyens

[Old map of Turnhout Stadspark \(2023\)](#)
[Old map of Turnhout North East \(2019\)](#)
[Old map of Turnhout North \(2014\)](#)

TERRAIN

The terrain is a typical Belgian city from the region 'the Kempen'. It performed as one of the biggest cities in the neighborhood and thus hosts several interesting buildings, musea, architecture and cultural buildings.

Turnhout has many schools in the city center and a beautiful beguinage as well!

The Friday qualification will be held in the City Park and the adjacent social residential area. The Knock Out Finals and the Sprint WRE will be held inside of the ringroad of Turnhout. Expect many schools, routechoices, cultural centers, parks and a lot of fun!

WINNER TIMES

The winner times for the WRE Knock Out Sprint are:

Qualification: 9 minutes
Quarter Final: 7 minutes
Semi Final: 7 minutes
Final: 7 minutes

The winner time for WRE Sprint is 15'00"

SPRINT WEEKEND!

ASOM is a sprint weekend so you are guaranteed to run at least 4 races, also if you are knocked out during the Knock-Out Sprint. You will have the chance to run the ASOM Sprint 1 and ASOM Sprint 2 on Saturday if you get knocked out.

Note that you CAN NOT take part in ASOM Sprint 1 if you are still qualified for the Semi Final and Final.
If so, you can only run Sprint 2 from 17h45.



CLASSES

Men Elite
Women Elite

There are no age restrictions for the Elite category.

ENTRY PERMIT

If you need an entry permit to obtain a travel visa to Belgium please contact info@asom.be.

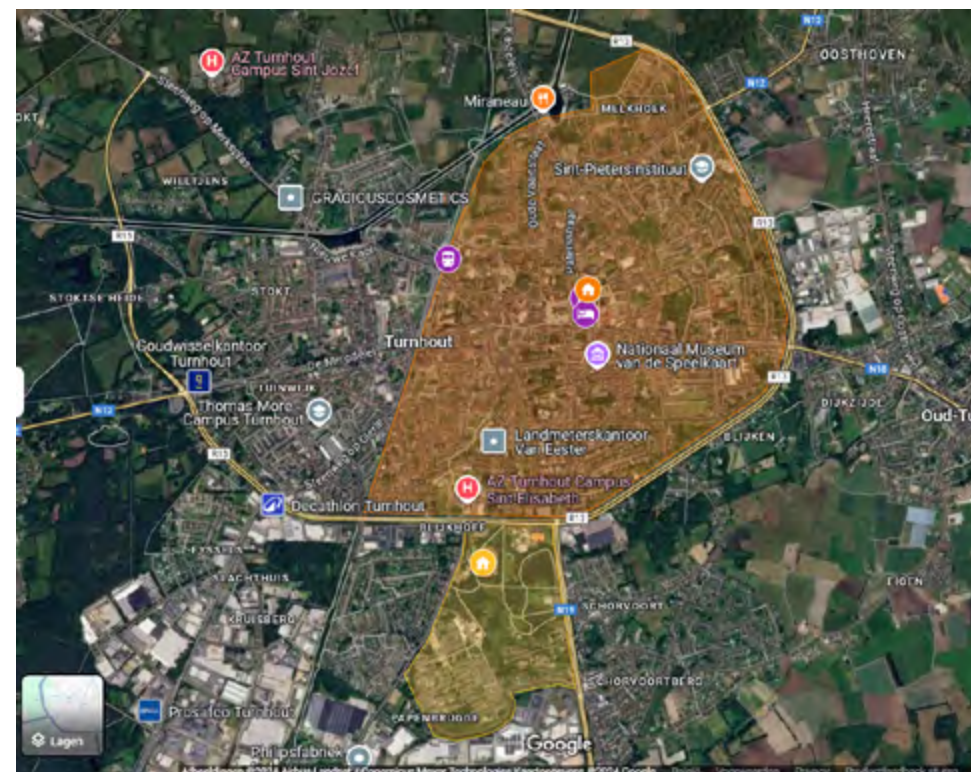


EMBARGOED AREA

The zone below in yellow / orange is the competition area for the WRE races.

There is NO strict embargo on this zone. Moving around to your accommodation, restaurants and shops is allowed. No running or orienteering of any kind should take place within the embargoed areas until the race and no training is allowed on the orienteering maps of the ASOM competitions until the last finish of the WRE on Sunday.

See [overview map](#) for details



PUNCHING SYSTEM

The SPORTident AIR+ system will be used during ASOM2025.



WEATHER

The weather in Turnhout at the end of april is typically mild as spring is in full swing. Average daytime temperatures hover around 13-17°C , with evenings being cooler at around 7-10°C. Rain is fairly common during this time. Please take warm clothes.

TRAINING

Please have a look at the training opportunities for EOC2025 if you want to have a training camp at ASOM2025.

www.eoc2025.be/training



PARTNERS

Special thanks to our partners!

