



EUROPEAN ORIENTEERING CHAMPIONSHIPS 2016
& EUROPEAN TRAIL ORIENTEERING CHAMPIONSHIPS 2016
21ST - 28TH MAY 2016

Bulletin 3

March 2016



WWW.EOC2016.CZ

Content

EOC & ETOC schedule	4
Travel distances	7
Visas	7
Transportation	7
Climate & risks	8
Embargoed areas and training possibilities	8
Entries	10
Accommodation	12
Media	13
Advisers & Controllers	13
Jury	13
Contact	13
Organizers	14
Classes and participation restrictions for EOC	15
EOC Events	16
Classes and participation restrictions for ETOC	24
ETOC Events	25
Events for spectators	29

EOC & ETOC schedule

Day	Hour	EOC	ETOC	Public events
19 th May, Thursday	from 12:00	arrival, Lázně Jeseník		
20 th May, Friday	from 10:00	model long, Bílá Voda		
	from 12:00	model sprint, Jeseník		
	15:00	deadline for entries sprint relay, Lázně Jeseník		
	17:30 - 18:30	technical model, Jeseník		
	19:00	team officials' meeting, Lázně Jeseník		
21 st May, Saturday	whole day	model long, Bílá Voda	arrival, Lázně Jeseník	regional event, Bruntál
	12:30 - 13:40	sprint relay , Bruntál		
	13:45	flower ceremony sprint relay, Bruntál		
	15:00	deadline for entries sprint, Lázně Jeseník		
	19:00	team officials' meeting, Lázně Jeseník		
	22 nd May, Sunday	9:00 - 10:45	sprint qualification , Jeseník	
14:30 - 15:55		sprint final B , Lázně Jeseník		
15:00		deadline for entries long, Lázně Jeseník		
16:00 - 18:00		sprint final , Lázně Jeseník		
18:00		flower ceremony sprint, Lázně Jeseník		
18:15		opening ceremony, Lázně Jeseník	opening ceremony, Lázně Jeseník	
18:30		prize giving ceremony sprint relay, Lázně Jeseník		
18:45		prize giving ceremony sprint, Lázně Jeseník		
19:00		team officials' meeting, Lázně Jeseník		
23 rd May, Monday		10:00 - 13:00	long qualification , Bílá Voda	
	12:00 - 17:00		model TempO, Jeseník water fort	
	15:00		deadline for entries TrailO Relay, Lázně Jeseník	
	18:00		team officials' meeting, Lázně Jeseník	
	19:00	team officials' meeting, Lázně Jeseník		

Day	Hour	EOC	ETOC	Public events
24 th May, Tuesday	10:00 - 14:00	long final B , Bílá Voda		
	10:00 - 13:00		TrailO Relay , Lázně Jeseník	
	12:25 - 16:50	long final , Bílá Voda		
	14:00		flower ceremony TrailO Relay, Lázně Jeseník	
	15:00		deadline for entries TempO, Lázně Jeseník	
	16:50	flower ceremony long, Bílá Voda		
	18:00		team officials' meeting, Lázně Jeseník	
25 th May, Wednesday	20:00	team officials' banquet, Jeseník	team officials' banquet, Jeseník	
	from 10:00	model middle & relay, Černá Voda		
	9:30 - 12:30		TempO qualification , Zlaté Hory	
	14:30 - 16:00			VIP & media race Lázně Jeseník
	15:00	deadline for entries middle, Lázně Jeseník		
	16:00 - 17:30		TempO final , Lázně Jeseník	
	17:45		flower ceremony TempO, Lázně Jeseník	
	18:00	prize giving ceremony long, Lázně Jeseník		
	18:15		prize giving ceremony TrailO Relay, Lázně Jeseník	
	19:00	team officials' meeting Lázně Jeseník		
26 th May, Thursday	10:00 - 15:00		model PreO, Vápenná	
	15:00 - 16:45	middle qualification , Horní Údolí		
	15:00		deadline for entries PreO, Lázně Jeseník	
	18:00		team officials' meeting, Lázně Jeseník	
	19:00	team officials' meeting, Lázně Jeseník		

Travel distances

Day	Hour	EOC	ETOC	Public events	
27 th May, Friday	10:00 – 16:00		PreO 1 , Zlaté Hory		
	12:30 – 14:15	middle final B , Černá Voda			
	15:00	deadline for entries relay, Lázně Jeseník			
	14:00 – 16:15	middle final men , Černá Voda			
	16:20	flower ceremony middle men, Černá Voda			
	15:45 – 18:00	middle final women , Černá Voda			
	18:05	flower ceremony middle women, Černá Voda			
	18:00		team officials' meeting, Lázně Jeseník		
	19:00	team officials' meeting, Lázně Jeseník			
	20:00		prize giving ceremony TempO, Jeseník – Masarykovo square		
	20:15	prize giving ceremony middle, Jeseník – Masarykovo square			
	20:30	VIP banquet Jeseník	VIP banquet Jeseník		
	28 th May, Saturday	10:00 – 11:45	relay men , Černá Voda		
		10:00 – 15:00		PreO 2 , Vápenná	
11:50		flower ceremony relay men, Černá Voda		Czech Cup – middle, Černá Voda	
12:00 – 13:45		relay women , Černá Voda			
13:50		flower ceremony relay women, Černá Voda			
14:00		prize giving ceremony relay, Černá Voda			
14:30		closing ceremony, Černá Voda			
16:00			prize giving ceremony PreO, Vápenná		
29 th May, Sunday	19:00	banquet, Jeseník	banquet, Jeseník		
	morning	departure	departure	Czech Cup – long Černá Voda	

	distance from Jeseník	time
Event centre: Lázně Jeseník (Jeseník spa) – Jeseník	3 km	10 min
Airport Wrocław – Jeseník	130 km	1:50 h by car 6:00 h by train
Airport Katowice – Jeseník	180 km	3:00 h by car 5:00 h by train
Airport Brno – Jeseník	180 km	2:20 h by car 4:00 h by train
Airport Praha – Jeseník	280 km	4:00 h by car 4:30 h by train
Airport Bratislava – Jeseník	320 km	4:10 h by car 5:00 h by train
Airport Wien – Jeseník	360 km	4:40 h by car 6:15 h by train

Visas

According to the current regulations citizens of some countries must obtain a visa in order to enter the Czech Republic. Please note that conditions of entry to the Czech Republic can change and all EOC participants are advised to keep up to date of the current situation. Please visit Ministry of Foreign Affairs of the Czech Republic website: <http://www.mzv.cz/jnp/en/index.html>

Transportation

It is suggested that competitors and officials use their own cars. The organizer is not providing official transportation, but will support teams that rely on public transport in finding suitable ways to reach the training and event locations.

Arena	Parking distance	Distance from Jeseník	Time by car
EOC			
Bruntál	0 – 500 m	50 km	60 min
Lázně Jeseník "Jeseník Spa"	200 m	5 km	10 min
Jeseník	0 – 500 m	0 km	0 min
Bílá Voda	700 m	40 km	45 min
Horní Údolí	0 – 300 m	20 km	30 min
Černá Voda	500 m	20 km	25 min
ETOC			
Zlaté Hory	0 – 500 m	30 km	30 min
Vápenná	0	15 km	15 min

There are no possibilities of ordering special cars for competitors with wheelchairs.

Climate & risks

Average temperature: 15 °C
 Typical maximum daytime temperature: 22 °C
 Probability of rain: moderate
 There is no special clothing required.
 No dangerous snakes or animals live in this region.
 Beware of ticks. It can transmit borreliosis and encephalitis. It is recommended to see a doctor after removing a tick.

Embargoed areas and training possibilities

With reference to the IOF Competition Rules (article 26.6), the areas indicated on this map are embargoed. Potential team members, leaders and others, whose knowledge of the terrain could influence results of the EOC competition, are prohibited from entering these areas.

Embargoed area nr. 6 – Lázně Jeseník (“Jeseník spa”):

For EOC participants, visiting the event center in Lázně Jeseník is allowed using the main road from Jeseník city only (see the maps below) and during event office opening hours only. However, consulting plans or maps, and training with or without map in the embargoed area is prohibited until 25th May for EOC participants (until after ETOC TempO final). Since the information given in the Bulletin 2, embargoed area 6 was adjusted so that Hotel Slunný Dvůr is out of the embargoed area. In Hotel Priessnitz, only ETOC teams can be accommodated.

For ETOC participants, living in an accommodation and visiting the event center in Lázně Jeseník (Jeseník spa) is allowed using the main road from Jeseník city only (see the maps below), however, consulting plans or maps, and training with or without map in the embargoed area is prohibited until 25th May (until after TempO final).

Embargoed areas (see map)

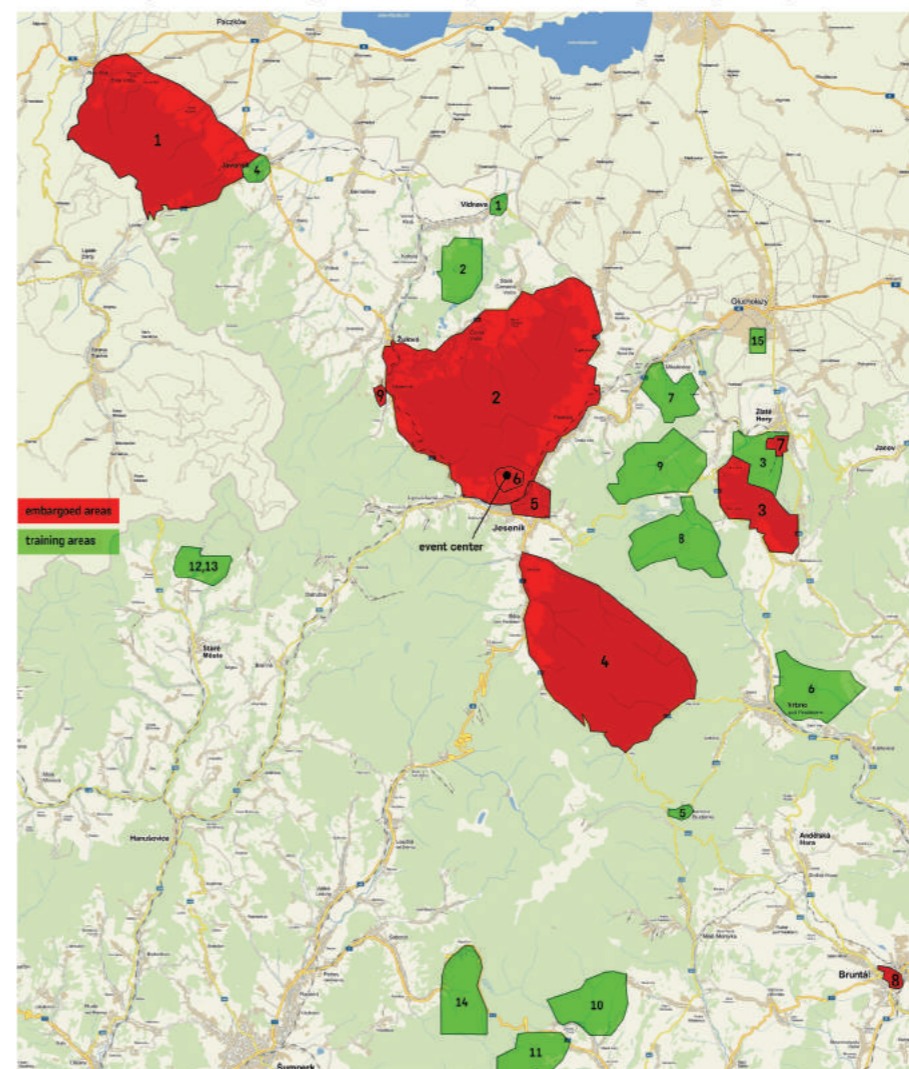
1	Javorník – road 457 direction to Lutynia – state border CZ/PL – Zlomy Stok – City of Bílá Voda – state border CZ/PL – Bílý Potok – Javorník
2	Jeseník – Lipová-lázně – Vápenná – Žulová – Černá Voda – Stará Červená Voda – Velké Kunčice – Supíkovice – Písečná – Jeseník
3	Horní Údolí – Dolní Údolí – northern and northeastern hillside of Příkladná hora – Mariahilf – Heřmanovice – Horní Údolí
4	Bílý Potok – Vidly – Bělá – Domašov – Bělá pod Pradědem – Adolfovice – valley of Šumný potok (creek), valley of Bílý potok (creek), Bílý Potok
5	city of Jeseník
6	Lázně Jeseník (Jeseník spa)
7	map “Snow Calamity” (year 2013)
8	city of Bruntál
9	quarry in Vápenná (SW from the village)

Training possibilities (see map)

1	Vidnava s	1:4 000	2008
2	Vidnava e5	1:10 000	2008
3	Lysý vrch	1:10 000	2013
4	Jánský vrch	1:4 000	2015
5	Karlová Studánka	1:4 000	2013
6	Sokolí skály	1:15 000	2009
7	Strážisko	1:15 000	2013
8	Ruský hřbitov	1:15 000	2004
9	Chlapecké kameny	1:15 000	2013
10	U škaredé jedle	1:15 000	2012
11	Cinvíz	1:15 000	2010
12	Kunčická hora	1:10 000	2013
13	Kuní vrch	1:10 000	2013
14	Skřítek	1:15 000	2015
15	Glucholazy	1:5 000	2012

Further information about training possibilities will be provided by Robert Zdráhal, brko@hanaorienteering.org

Embargoed and training areas for European Orienteering Championships 2016



Latest colour copies of maps of embargoed areas:

Zlatohorská rýžoviště/Snow Calamity	1:10 000	2008/2013	http://csos.tmapserver.cz/data/jpg/5153a.jpg
Kaltenštejn 2011-4	1:10 000	2011	http://csos.tmapserver.cz/data/jpg/6117b.jpg
Kaltenštejn 10-5	1:10 000	2010	http://csos.tmapserver.cz/data/jpg/5897b.jpg
Gräfenberg	1:10 000	1996	http://csos.tmapserver.cz/data/jpg/2452a.jpg
Příčná hora	1:15 000	2007	http://csos.tmapserver.cz/data/jpg/4875a.jpg

Entries

The entry form is available on EOC 2016 website. This form must be used. We do not use IOF Eventor. Each competitor's name and gender and the names of the team officials shall reach the organiser by 11th May. Changes may be made by the noon (12:00) the day before the event starts.

Entry fee

EOC

Accreditation for athletes EOC	2.800 CZK
Long distance Q+F (per competitor)	2.400 CZK
Middle distance Q+F (per competitor)	2.400 CZK
Sprint Q+F (per competitor)	2.400 CZK
Relay (per team)	4.400 CZK
Sprint relay (per team)	4.400 CZK
Accreditation for officials	2.800 CZK
Accreditation for IOF Officials, VIPs and WOC Guests	2.800 CZK

ETOC

Accreditation for athletes ETOC	1.800 CZK
Pre-O Day 1+2 (per competitor)	2.800 CZK
TempO Q+F (per competitor)	2.800 CZK
TrailO Relay (per team)	3.500 CZK
Accreditation for officials	1.800 CZK

Accreditation for media	0 CZK
Banquet ticket (entrance fee, dishes, non-alcoholic drinks, beer)	300,- CZK

Accreditation for officials (EOC and ETOC) includes access to VIP tent in competition arenas, competition maps, start and result lists, VIP and media race.

Information for payments:

Bank: Fio banka, a.s., V Celnici 1028/10, 117 21 Praha 1, Česká republika
IBAN:CZ9220100000000172435721

BIC/SWIFT: FIOBCZPPXXX

Account owner:	Jesenické sdružení orientačních sportů, Tyršova 12, 787 01 Šumperk, Česká republika
Detail of payment:	number of invoice (there will be created separate invoice for every payment and it will be sent on email), indication EOC or ETOC
Notice:	Bank charges will be fully paid by payer!

All payments must be transferred by 31th March 2016.
Any regulations for registration of media representatives and extra representatives of the Federations will be published on the EOC 2016 website by 16th April 2016.

Summary of entries received by 7th March

Team	EOC (M+W/Officials)	ETOC (M+W/Officials)
Australia	2/0	0/0
Austria	10/3	0/0
Belgium	5/1	0/0
Bulgaria	6/1	0/0
Canada	2/0	0/0
Czech Republic	20/4	14/0
Denmark	12/5	8/1
Estonia	14/2	0/0
Finland	20/4	15/1
France	14/4	0/0
Germany	12/1	0/0
Great Britain	26/2	8/1
Hungary	9/1	4/0
Ireland	9/0	0/0
Israel	3/1	0/0
Latvia	13/1	11/0
Lithuania	12/0	9/0
New Zealand	6/0	0/0
Norway	18/5	10/0
Poland	6/1	2/0
Portugal	3/1	5/1
Romania	8/1	0/0
Russia	20/2	12/0
Slovakia	7/2	8/1
Slovenia	0/0	3/0
Spain	3/0	2/0
Sweden	20/5	10/1
Switzerland	20/5	0/0
Ukraine	12/2	6/0
United States	1/0	0/0

Accommodation

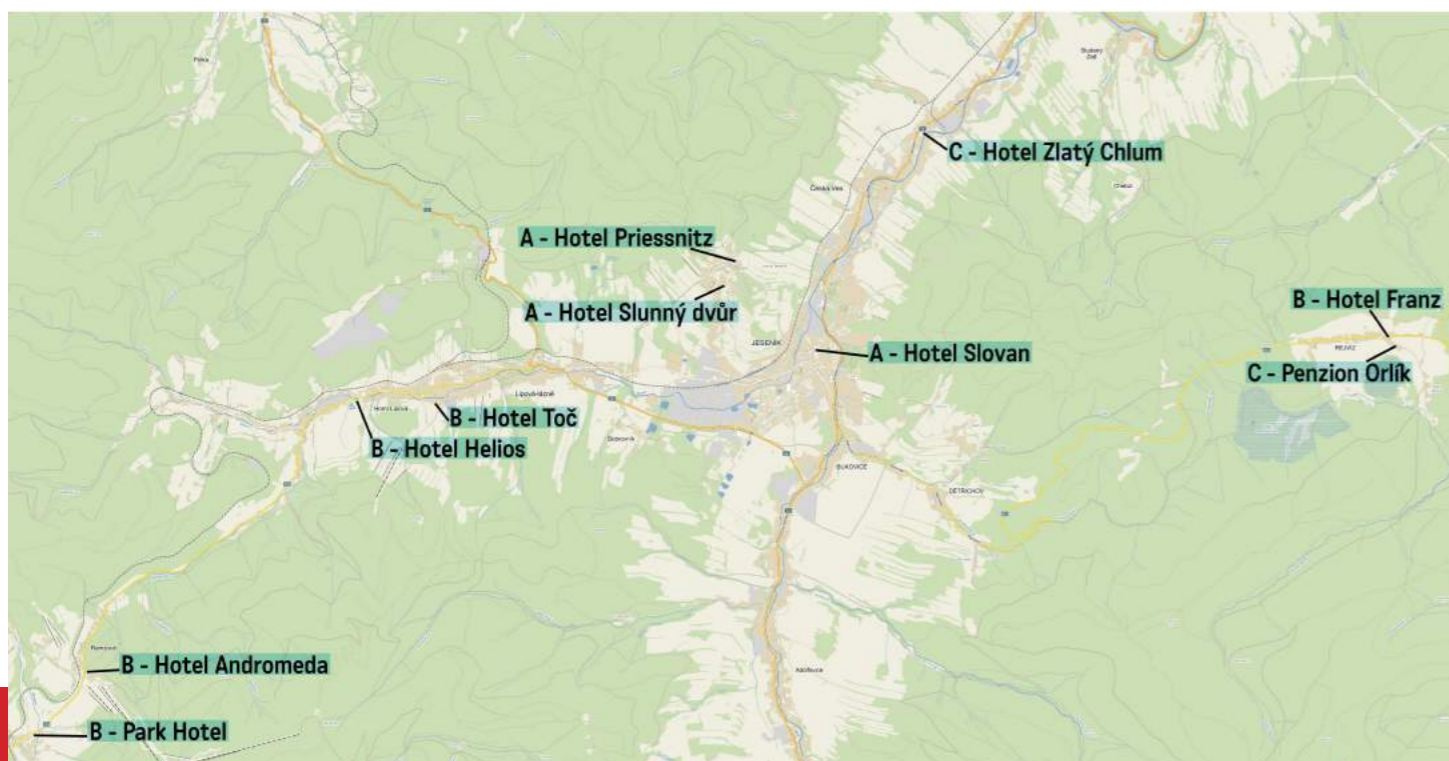
Price covers accommodation + full board / 1 person / 1 night

A	single room	1.600 CZK
A	double room	1.300 CZK
B	single room	1.200 CZK
B	double room	1.100 CZK
C	single room	900 CZK
C	double room	800 CZK

Class	Hotel	Location	Beds	Distance from EC	Note
A	Hotel Slovan	Jeseník	63	3.3 km	for VIPs only
A	Hotel Slunný dvůr	Lázně Jeseník	51	0.5 km	
A	Hotel Priessnitz	Lázně Jeseník	54	0 km	not for EOC, only ETOC
B	Hotel Helios	Lipová lázně	63	8.8 km	
B	Hotel T oč	Lipová lázně	56	8.2 km	
B	Hotel Andromeda	Ramzová	56	13.3 km	
B	Park Hotel	Ostružná	48	14.6 km	
B	Hotel Franz	Rejvíz	60	14.6 km	
C	Penzion Orlík	Rejvíz	28	14.6 km	
C	Hotel Zlatý Chlum	Česká ves	58	7.3 km	

Email for orders: jan.ales@eoc2016.cz (or alternatively petr.ales@eoc2016.cz, accommodation manager)

Accommodation for European Orienteering Championships 2016



Media

Media accreditation

Please use the official form at EOC website to apply for accreditation. Accreditation is free of charge. Accreditation cards for media representatives will be available at the media centre, in the event centre in Hotel Priessnitz. To a limited extent, accreditation will be possible upon arrival, in the media centre, but preferably please use the form and do not forget to include your photograph to avoid lengthy waiting times at accreditation collection. Opening hours of the media centre will be given in time on EOC website. Media centres both in the event centre and arena will provide wifi internet connection and basic refreshments. Photographing spots will be available in the finish area and in suitable places in the race area, where possible.

VIP & media race

VIP & media race will take place on Wednesday 25th May at Zlaté Hory. Start times are after 12.30. Entry forms will be available in the media centre in the days before the race.

Advisers & Controllers

IOF SEA EOC	Konrad Becker	SUI
IOF SEA Assistant EOC	Péter Molnár	HUN
IOF SEA ETOC	Lars Jakob Waaler	NOR
IOF Assistant SEA ETOC	John Kewley	GBR
National controller EOC	Roman Zbranek	CZE
National controller ETOC	Pavel Dudík	CZE

Jury

Jury EOC

Áron Less (HUN), Unni Strand Karlsen (NOR), Jaroslav Kačmarčík (CZE)

Jury ETOC

Will be published later

Contact

web	eoc2016.cz
address	Tyršova 12, Šumperk 787 01 Czech Republic
telephone	+420-777564377
email	info@eoc2016.cz

Organizers



Organizing committee

chairman	David Aleš	david.ales@eoc2016.cz
vice-chairman	Petr Klimpl	petr.klimpl@eoc2016.cz
event director	Lukáš König	lukas.konig@eoc2016.cz
accommodation and catering	Petr Aleš	petr.ales@eoc2016.cz
trailO	Tomáš Leštínský	tomas.lestinsky@eoc2016.cz
chief course planning	Daniel Wolf	daniel.wolf@eoc2016.cz
manager	Petr Aleš	petr.ales@eoc2016.cz
OC secretary	Jan Fátor	info@eoc2016.cz
chief financial officer	Zdena Gavorová	zdena.gavorova@eoc2016.cz
arenas	Vítězslav Khýn	vitezslav.khyn@eoc2016.cz
media	Petr Kadeřávek	petr.kaderavek@eoc2016.cz



Classes and participation restrictions for EOC

- Categories are W21 and M21. There are no age restrictions.
- Competitors representing member Federations of the IOF, defined by the International Olympic Committee as belonging to the European continent, can compete in EOC.
- Competitors representing other member Federations of the IOF can participate in EOC but will not be eligible for European titles, medals or diplomas.
- There is no limit on the number of runners and officials in a team.
- In the individual competitions a Federation may enter a maximum of 6 runners in each class. The current European Champion for the competition shall be given a wild card to enter the qualification in the next EOC in addition to the ordinary entries from his/her Federation (in which case one starting group may have three competitors from that Federation).
- In each individual competition, the competitors placed number 17 and better in each qualification race heat may run in the A-final; the remaining competitors run in the B-final.
- Competitors who start, but are not placed, in the qualification race may start before the qualified runners in the B-final but shall appear in the result list as not placed.
- In the relay a Federation may enter 2 teams each consisting of 3 competitors, but only the better-placed team will count in the prize list. Incomplete teams and teams with runners from more than one Federation are not allowed.
- Each participating Federation shall appoint a team manager to act as a contact person between the team and the organizer. It is the team manager's duty to see that the team receives all necessary information. Competitors participate at their own risk. Insurance against accidents shall be the responsibility of their Federation or themselves, according to national regulations.
- There are no other peculiarities of the event.
- A competitor may represent only one Federation during any one calendar year.
- Competitors who are representing a Federation shall have full passport-holding citizenship of the country of that Federation.
- The events of EOC 2016 are Competition 2 of 2016 Sprint Relay World Cup and Competitions 3, 4 and 5 of 2016 World Cup (Individual), see the Special Rules published on the IOF website.

EOC Events

Punching system SportIdent Air+ will be used for all competitions.

Sprint Relay

Date:	Saturday, 21 st May, from 12:30 to 13:40
Location:	Bruntál (50 km from event centre) GPS 49.9885044N, 17.4654247E
Terrain:	city and park, very good runnability and visibility, altitude 550 m
Warning:	Shoes with spikes are not allowed.
Map:	scale 1:5 000, contour interval 2.5 m, mapped by Jan Fátor
Course planner:	Radim Hošek
Number of legs:	4
Max. number of relays from each federation:	1

Relay

First start:	12:30
Approx. length of legs:	3.7 km / 4.2 km
Total climb:	30 m
Number of controls:	20 / 23
Number of refreshment controls:	0
Winning time:	60 min



Sprint Qualification

Date:	Sunday, 22 nd May, from 9:00 to 10:45
Location:	Jeseník (5 km from event centre) GPS 50.2293703N, 17.2046431E
Terrain:	city and park, very good runnability and visibility, altitude 450 m
Warning:	Shoes with spikes are not allowed.
Map:	scale 1:5 000, contour interval 2.5 m, mapped by Jan Fátor
Course planner:	Daniel Wolf
Number of heats:	3 (there will be 17 qualified competitors from each heat)
Max. number of competitors: (men/women) from each federation	6 (+ current European Champion)

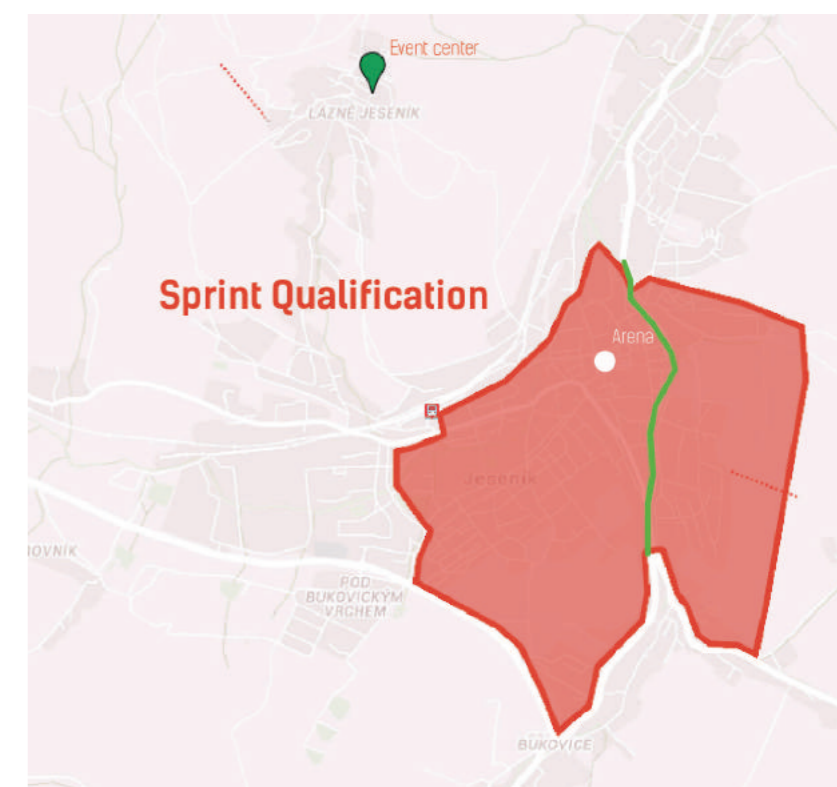
Women

First start women:	10:00
Approx. course length:	3.4 km
Total climb:	25 m
Number of controls:	17
Number of refreshment controls:	0
Winning time:	13 min



Men

First start men:	9:00
Approx. course length:	3.7 km
Total climb:	30 m
Number of controls:	20
Number of refreshment controls:	0
Winning time:	13 min

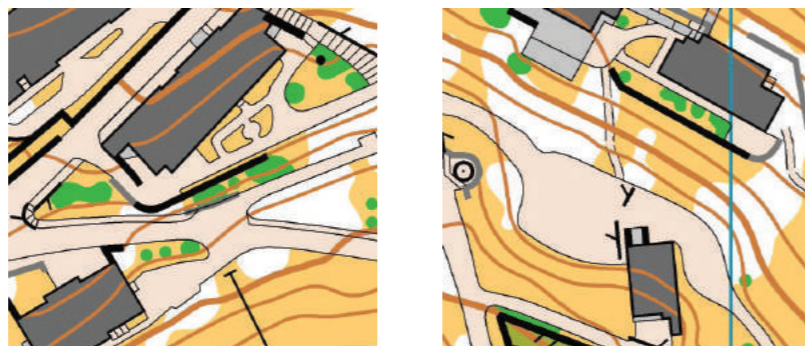


Sprint Final

Date:	Sunday, 22 nd May, from 14:30 to 18:00
Location:	Lázně Jeseník (near event centre) GPS 50.2425117N, 17.1898722E
Terrain:	Spa and spa park, hilly terrain, good runnability and visibility, altitude 550 – 650 m
Warning:	Shoes with spikes are not allowed.
Map:	Scale 1:5 000, contour interval 2.5 m, mapped by Jan Fátor
Course planner:	Daniel Wolf

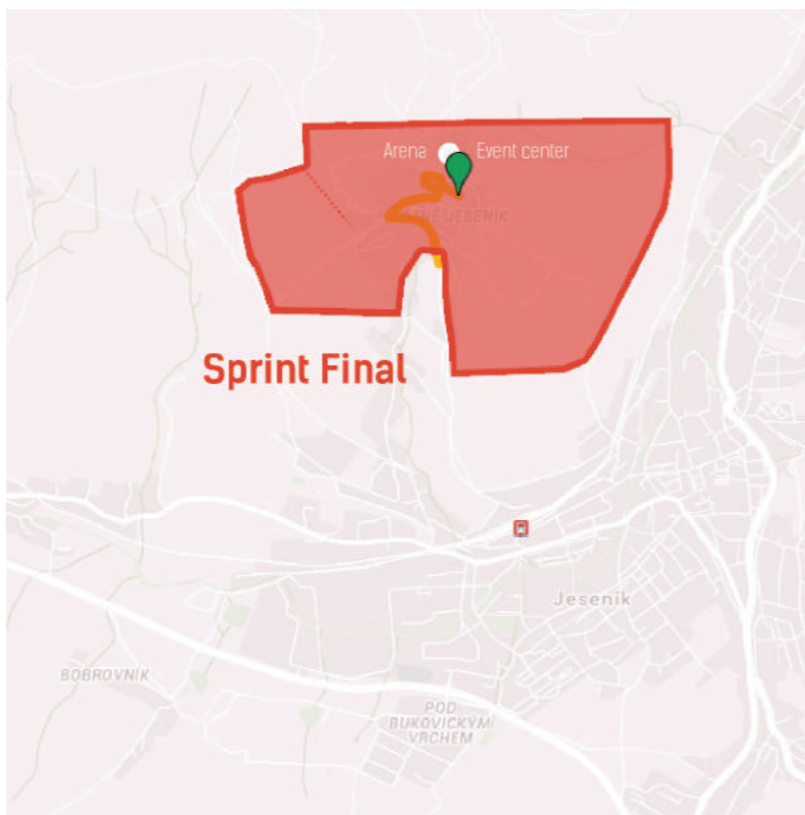
Women

First start B final:	14:30
First start A final:	16:53
Approx. course length:	3.0 km
Total climb:	115 m
Number of controls:	18
Number of refreshment controls:	0
Winning time:	15 min



Men

First start B final:	14:30
First start A final:	16:00
Approx. course length:	3.4 km
Total climb:	130 m
Number of controls:	22
Number of refreshment controls:	0
Winning time:	15 min

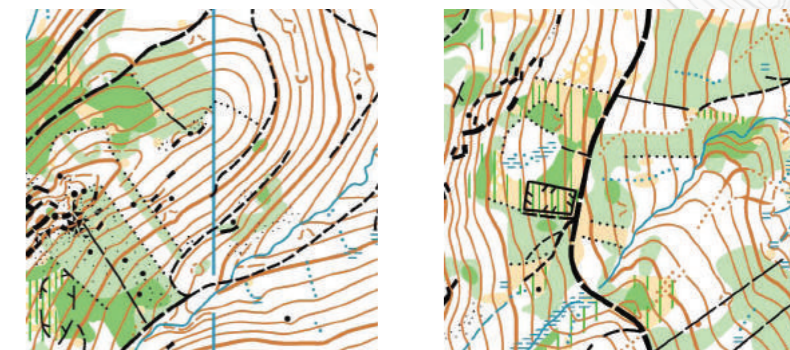


Long distance qualification

Date:	Monday, 23 rd May, from 10:00 to 13:00
Location:	Bílá Voda (40 km from event centre) GPS 50.4337997N, 16.9191236E
Terrain:	mountains, hilly terrain, steep slopes, deep valleys, altering number of roads, mostly very good runnability, visibility varies from very good to good, altitude 350 – 800 m
Map:	scale 1:15 000, contour interval 5 m, mapped by Bohumil Háj
Course planner:	Filip Stárek
Number of heats:	3 (there will be 17 qualified competitors from each heat)
Max. number of competitors: (men/women) from each federation	6 (+ current European Champion)

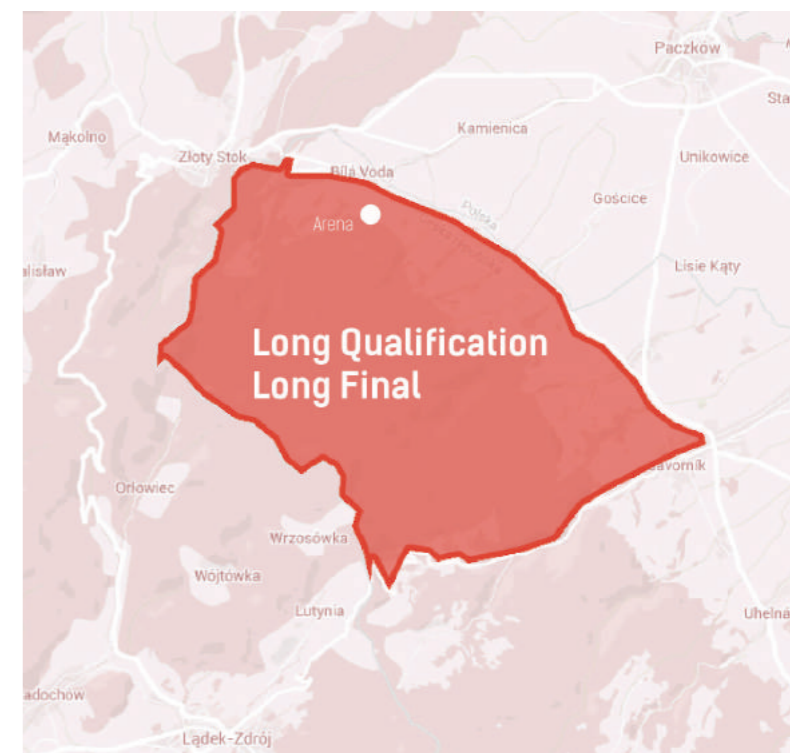
Women

First start:	10:00
Approx. course length:	6.3 km
Total climb:	240 m
Number of controls:	11
Number of refreshment controls:	1
Winning time:	45 min



Men

First start:	10:00
Approx. course length:	10.3 km
Total climb:	440 m
Number of controls:	20
Number of refreshment controls:	2
Winning time:	60 min

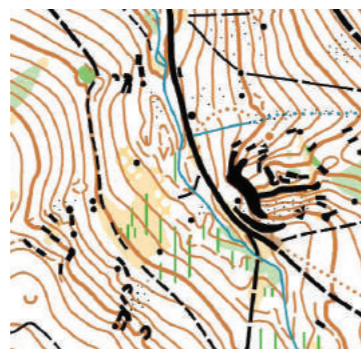


Long distance final

Date:	Tuesday, 24 th May, from 10:00 to 16:50
Location:	Bílá Voda (40 km from event centre) GPS 50.4337997N, 16.9191236E
Terrain:	mountains, hilly terrain, steep slopes, deep valleys, altering number of roads, mostly very good runnability, visibility varies from very good to good, altitude 350 - 800 m
Map:	scale 1:15 000, contour interval 5 m, mapped by Bohumil Háj
Course planner:	Martin Janata

Women

First start final B:	10:00
First start final A:	12:25
Approx. course length:	10.2 km
Total climb:	415 m
Number of controls:	15
Number of refreshment controls:	3
Winning time:	80 min



Men

First start final B:	10:00
First start final A:	12:35
Approx. course length:	15.9 km
Total climb:	600 m
Number of controls:	23
Number of refreshment controls:	3
Winning time:	100 min

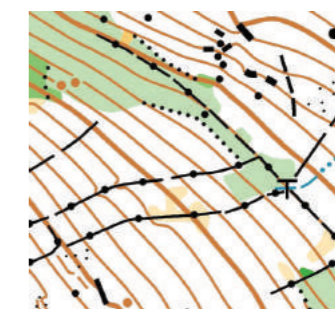


Middle distance qualification

Date:	Thursday, 26 th May, from 15:00 to 16:45
Location:	Horní Údolí (25 km from event centre) GPS 50.2110997N, 17.3705119E
Terrain:	curly terrain, slope with stones, green areas, mixed visibility and runnability, medium density of paths, altitude 750 - 975 m
Map:	scale 1:10 000, contour interval 5 m, mapped by Martin Kratochvil
Course planner:	Adam Chromý
Number of heats:	3 (there will be 17 qualified competitors from each heat)
Max. number of competitors: (men/women) from each federation	6 (+ current European Champion)

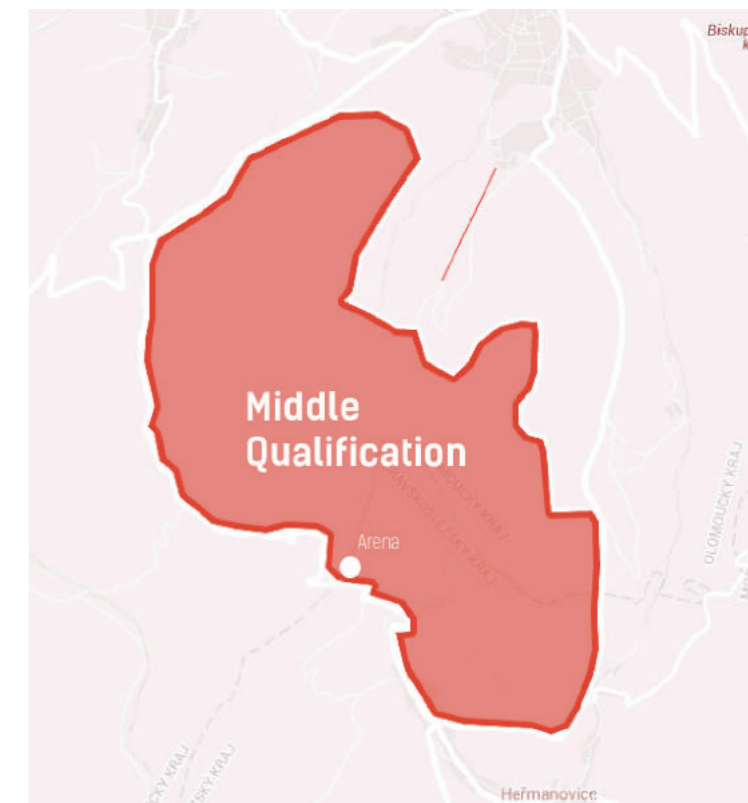
Women

First start:	15:00
Approx. course length:	3.3 km
Total climb:	80 m
Number of controls:	16
Number of refreshment controls:	0
Winning time:	25 min



Men

First start:	15:00
Approx. course length:	4.7 km
Total climb:	180 m
Number of controls:	22
Number of refreshment controls:	0
Winning time:	25 min

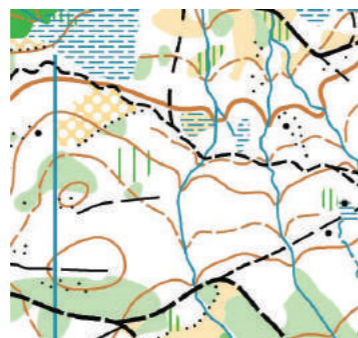


Middle distance final

Date:	Friday, 27 th May, from 12:30 to 18:00
Location:	Černá Voda (25 km from event centre) GPS 50.2972850N, 17.1615544E
Terrain:	curly terrain, slope with many stones, stone grounds, watercourses, mixed visibility and runnability, medium density of paths, altitude 350 - 600 m
Map:	scale 1:10 000, contour interval 5 m, mapped by Zdeněk Sokolář
Course planner:	Jakub Weiner

Women

First start final B:	12:30
First start final A:	15:45
Approx. course length:	5.0 km
Total climb:	160 m
Number of controls:	20
Number of refreshment controls:	1
Winning time:	35 min



Men

First start final B:	12:30
First start final A:	14:00
Approx. course length:	5.8 km
Total climb:	210 m
Number of controls:	23
Number of refreshment controls:	1
Winning time:	35 min



Relay

Date:	Saturday, 28 th May, from 10:00 to 13:45
Location:	Černá Voda (25 km from event centre) GPS 50.2972850N, 17.1615544E
Terrain:	curly stony terrain, stone grounds, watercourses, mixed visibility and runnability, medium density of paths, altitude 350 - 600 m
Map:	scale 1:10 000, contour interval 5 m, mapped by Zdeněk Sokolář
Course planner:	Jan Pícek
Number of legs:	3
Max. number of relays: (men/women) from each federation	2/2

Women

First start:	12:00
Approx. length of legs:	5.5 km
Total climb:	200 m
Number of controls:	21 - 24
Number of refreshment controls:	1
Winning time:	105 min



Men

First start:	10:00
Approx. length of legs:	6.7 km
Total climb:	220 m
Number of controls:	24 - 26
Number of refreshment controls:	1
Winning time:	105 min





ETOC

Classes and participation restrictions for ETOC

- In ETOC there are two classes. All competitors, regardless of sex, age or physical ability/disability are eligible to be entered for the ETOC Open class competition.
- Only competitors who have a permanent disability that significantly reduces their mobility are eligible to be entered for the European Championship Paralympic class competition.
- Competitors for the Paralympic class shall submit to the IOF, at least eight weeks before the competition, an eligibility form (available at www.orienteering.org) completed by a doctor.
- When approved, a certificate authenticating their Paralympic status will be issued.
- The eligibility certificate must be sent to the event organiser with the final entry form (by 11th May).
- There are no age restrictions.
- Competitors representing member Federations of the IOF, defined by the International Paralympic Committee as belonging to the European continent, can compete in ETOC.
- Competitors representing other member Federations of the IOF can participate in ETOC but will not be eligible for European titles, medals or diplomas.
- In the individual PreO event a Federation may enter a maximum of 6 persons in each class. In the TempO event a Federation may enter a maximum of 8 persons. The current European Champion may be entered in their respective classes in addition to the normal maximum.
- In the TrailO Relay a Federation may enter 2 teams in each class, each consisting of 3 competitors. Only the better-placed team will count in the prize list.
- There are no other peculiarities of the event.

Electric Wheelchair

The maintenance of wheelchairs is the responsibility of the participants. There will be a possibility to recharge wheelchairs in the event centre.

Clothing

According to The Competition Rules for IOF Trail Orienteering Events, the choice of clothing and footwear shall be free.

ETOC Events

For PreO punching system SportIdent will be used. Each competitor receives SI card from organiser. Course lengths, number of controls and time limits are "subject to final approval by the ETOC SEA."

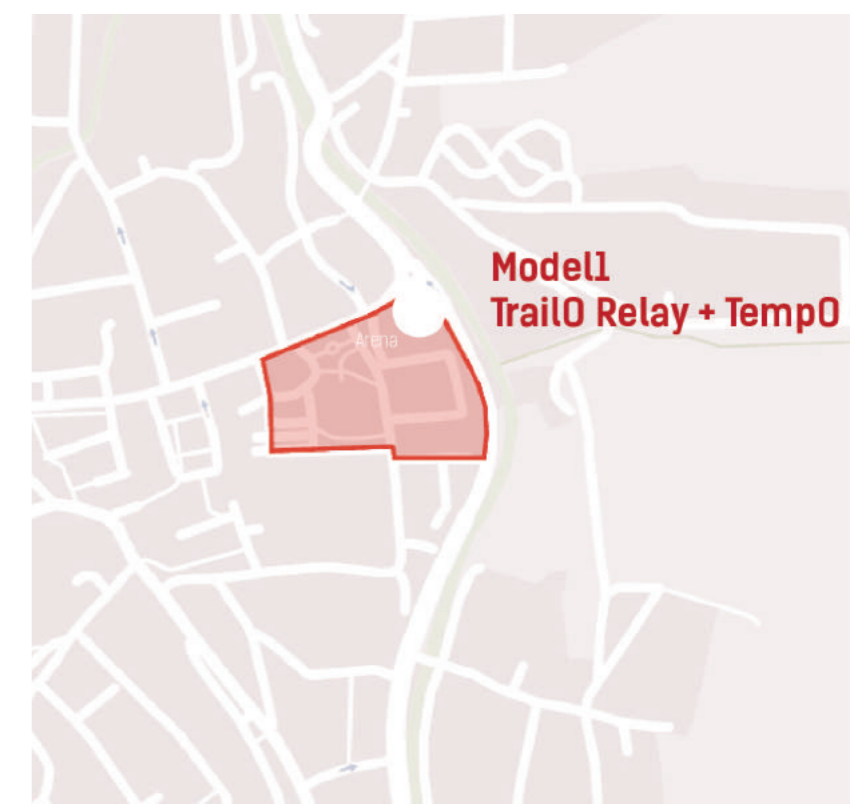
Model TempO + TrailO Relay

Date:	23 rd May, from 12:00 to 17:00
Location:	Jeseník, water fort GPS 50.2302894N, 17.2079969E
Terrain:	town park, paved paths
Map:	scale 1:4 000, contour interval 2.5 m, mapped by Jan Fátor
Course planner:	Tomáš Leštínský
Max. number of competitors: (Open/Para) from each federation	unlimited

Course

2 TempO clusters, 5 PreO controls

Length:	0.3 km
Time limit	no limit
Total climb	0 m



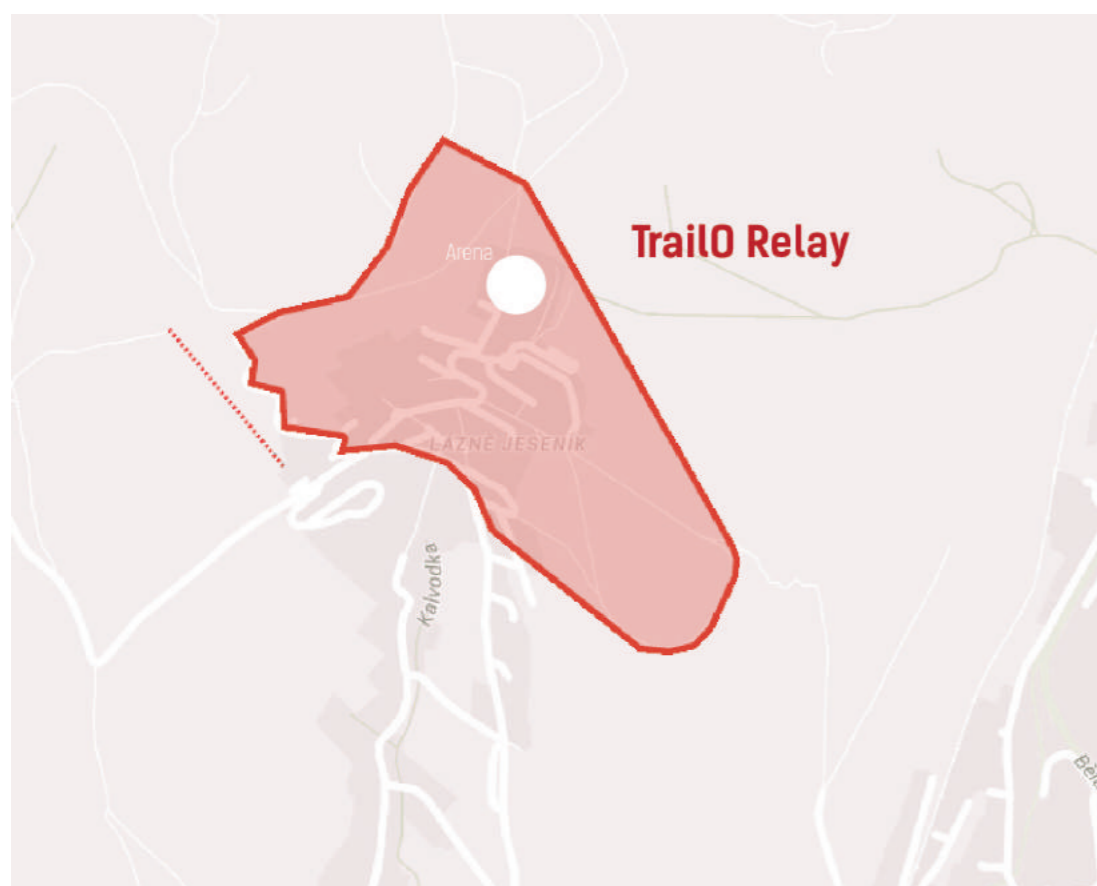
TrailO Relay

Date:	24 th May, from 10:00 to 13:00
Location:	Lázně Jeseník GPS 50.2423122N, 17.1895003E
Terrain:	hilly park with paved paths, excellent visibility
Map:	scale 1:4 000, contour interval 2.5 m, mapped by Jan Fátor
Course planner:	Tomáš Leštínský
Max. number of competitors: (Open/Para) from each federation	2/2 relays, each of 3 competitors

Course

9 controls each leg + 2 TempO station,
3rd leg has plus 2 extra PreO controls
and plus 1 extra public TempO station

Length:	0.9 km
Time limit Open	150 min
Time limit Para	180 min
Total climb	20 m



TempO qualification

Date:	25 th May, from 9:30 to 12:30
Location:	Zlaté Hory GPS 50.2537286N, 17.3934769E
Terrain:	town park, paved paths
Map:	scale 1:4 000, contour interval 2.5 m, mapped by Tomáš Leštínský
Course planner:	Tomáš Leštínský
Max. number of competitors from each federation:	8

Course

6 clusters, each 4 controls, 2 heats

Length:	0.5 km
Total climb	10 m



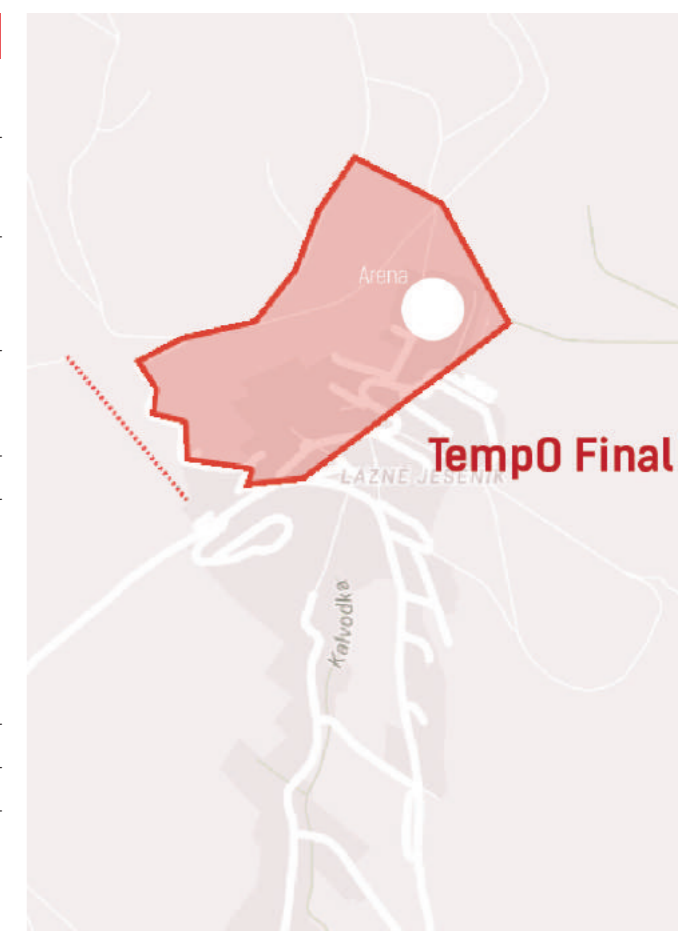
TempO final

Date:	25 th May, from 16:00 to 17:30
Location:	Lázně Jeseník GPS 50.2423122N, 17.1895003E
Terrain:	hilly park with paved paths, excellent visi- bility
Map:	scale 1:4 000, contour in- terval 2.5 m, mapped by Jan Fátor
Course planner:	Tomáš Leštínský
Max. number of competitors:	the top 18 from each heat

Course

7 clusters, each 4 controls

Length:	0.3 km
Total climb	0 m



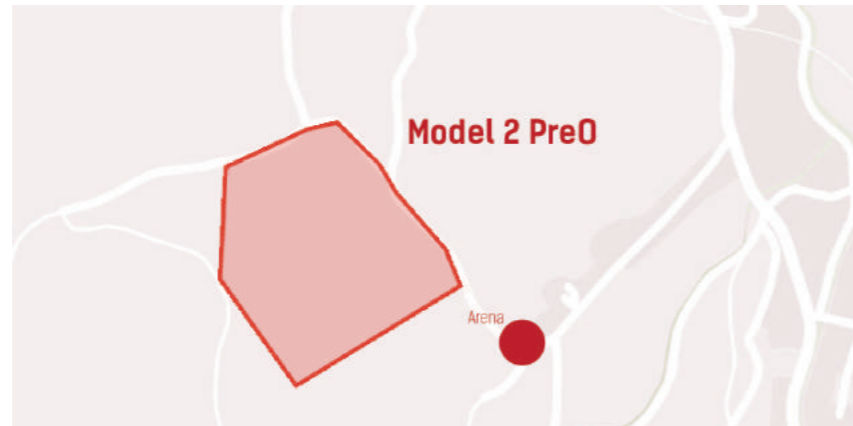
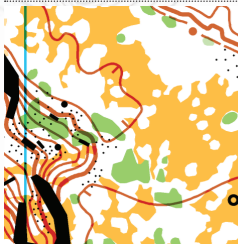
Model Pre0

Date:	26 th May, from 10:00 to 15:00
Location:	Vápenná GPS 50.2782944N, 17.0922436E
Terrain:	old limestone mine, bushy, reduced visibility, unpaved road
Map:	scale 1:4 000, contour interval 2.5 m, mapped by Tomáš Leštinský
Course planner:	Tomáš Leštinský
Max. number of competitors: (Open/Para) from each federation	unlimited

Course

9 controls, 1 time control

Length:	0.2 km
Total climb	5 m



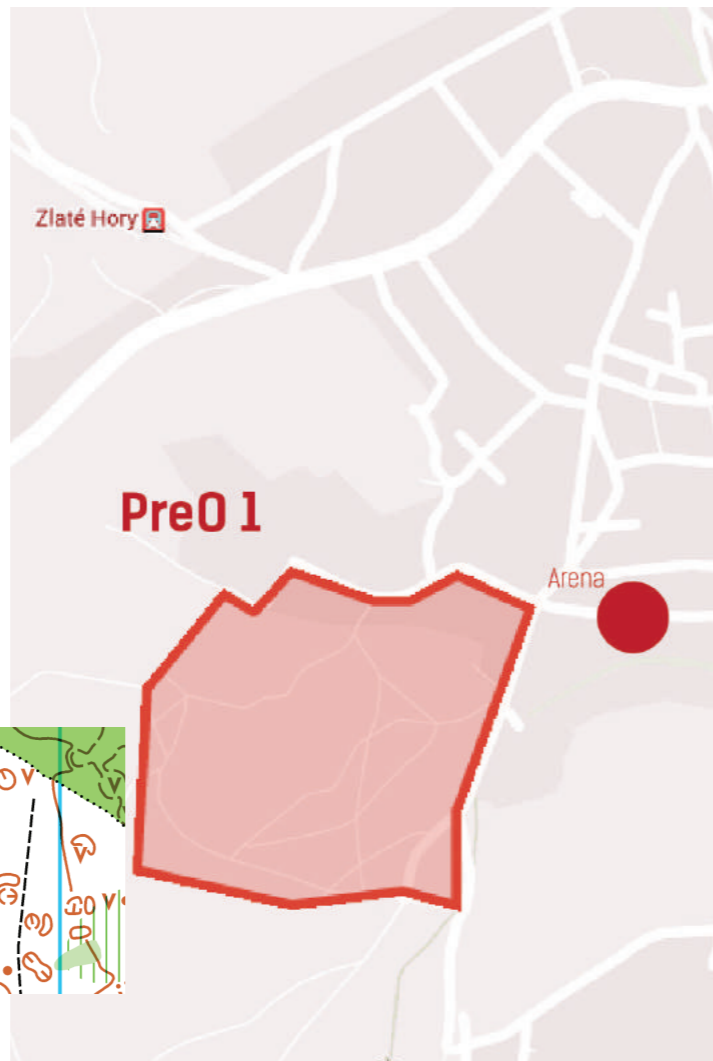
Pre0 1

Date:	27 th May from 10:00 to 16:00
Location:	Zlaté Hory, Bohéma 50.2459900N, 17.3921467E
Terrain:	Ancient mining area, large amount of pits and depressions, unpaved narrow forest paths. Generally good visibility.
Map:	scale 1:4 000, contour interval 2.5 m, mapped by Tomáš Leštinský
Course planner:	Tomáš Leštinský
Max. number of competitors: (Open/Para)	6/6

Course

23 controls + 1 time control

Length:	1.0 km
Total climb	0 m
Time limit Open	100 min
Time limit Para	130 min



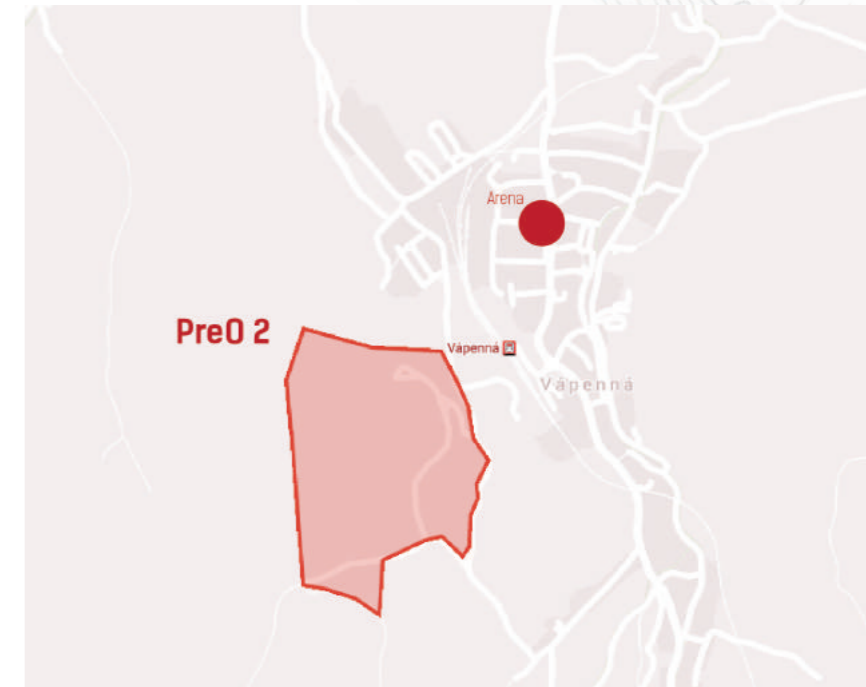
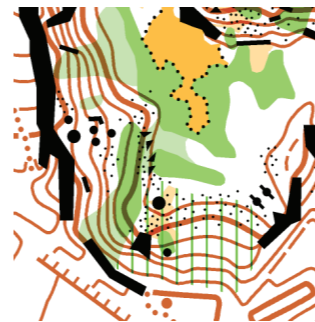
Pre0 2

Date:	28 th May, from 10:00 to 15:00
Location:	Vápenná GPS 50.2864800N, 17.0958914E
Terrain:	old limestone mine, bushy, reduced visibility, unpaved road
Map:	scale 1:4 000, contour interval 2.5 m, mapped by Tomáš Leštinský
Course planner:	Tomáš Leštinský
Max. number of competitors: (Open/Para)	6/6

Course

24 controls + 2 time controls

Length:	0.7 km
Total climb	0 m
Time limit Open	95 min
Time limit Para	115 min



There will be available a sufficient amount of assistants for Para competitors on TempO qualification, TempO final, TrailO Relay, Pre0 1 and Pre0 2. On models there will be only a limited amount of assistants.

Events for spectators

Saturday	21 st May	Regional event	Bruntál
Saturday	28 th May	Czech Cup (middle)	Černá Voda
Sunday	29 th May	Czech Cup (long)	Černá Voda

Entries: <http://oris.orientacnisporty.cz/>

There will be no competitive TrailO events for ETOC spectators. There will be possibility to visit several TrailO courses after competition.



www.EOC2016.cz

**CZECH
REPUBLIC
Trail-Team**