

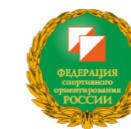


## THE CITY OF KRASNOYARSK

- ▶ Krasnoyarsk is a cultural, economic and educational center of Siberia and the capital of the Krasnoyarsk Region (the second largest entity of the Russian Federation with the area of 2,339,700 sq.km). The Krasnoyarsk region is rightly called the center of Russia: Lake Vivi (Evenkia) is located in the territory of the region, which is the geographical center of the country. Krasnoyarsk is located on both banks of the Yenisei River. The city combines age-old traditions and modern development. Its total area is 353.9 sq.km. The population of Krasnoyarsk is 1,017,226 people. Krasnoyarsk is an open and hospitable Siberian city, the city that gives opportunity to enjoy real winter and winter sports in up-to-date and comfortable conditions. Over 20% of Krasnoyarsk population actively do sports. There are over 150 sports developing in the region. Krasnoyarsk regularly hosts major national and international competitions.

## 29TH WINTER UNIVERSIADE 2019 IN KRASNOYARSK

- ▶ In 2019 Krasnoyarsk will host the first winter Universiade which will become the third one in the history of Russia. The University Games will be staged from the 2nd to the 12th of March, 2019. The 2019 Winter Universiade Program includes 10 sports: Ski Orienteering, Cross-country Skiing, Biathlon, Snowboarding, Curling, Alpine Skiing, Freestyle Skiing, Ice Hockey, Figure Skating and Short Track Speed Skating. About 3000 athletes from 50 countries, 25000 tourists and guests and 5000 volunteers are expected to participate in the events of 29th Winter Universiade 2019 in Krasnoyarsk. More information can be found on the Universiade 2019 official web-site: [www.krsk2019.com](http://www.krsk2019.com)



KRASNOYARSK  
KRAY



# WORLD SKI ORIENTEERING CHAMPIONSHIPS

KRASNO YARSK, RUSSIA  
5-13 March, 2017



## ORGANISERS

- ▶ Ministry for sport of the Russian Federation, Russian Orienteering Federation, Government of the Krasnoyarsk Region, ANO "Executive Directorate of the 29th Winter Universiade 2019 in Krasnoyarsk", Orienteering Federation of the Krasnoyarsk Region.

Event Director: Alexander Bliznevsky (RUS)  
Assistant Event Director: Sergey Khudik (RUS)  
Event Secretary: Anna Khudik (RUS)  
Assistant Event Secretary: Andrey Pavlov (RUS)  
Course setter: Sergey Skripko (RUS)

## EVENT CONTROLLERS

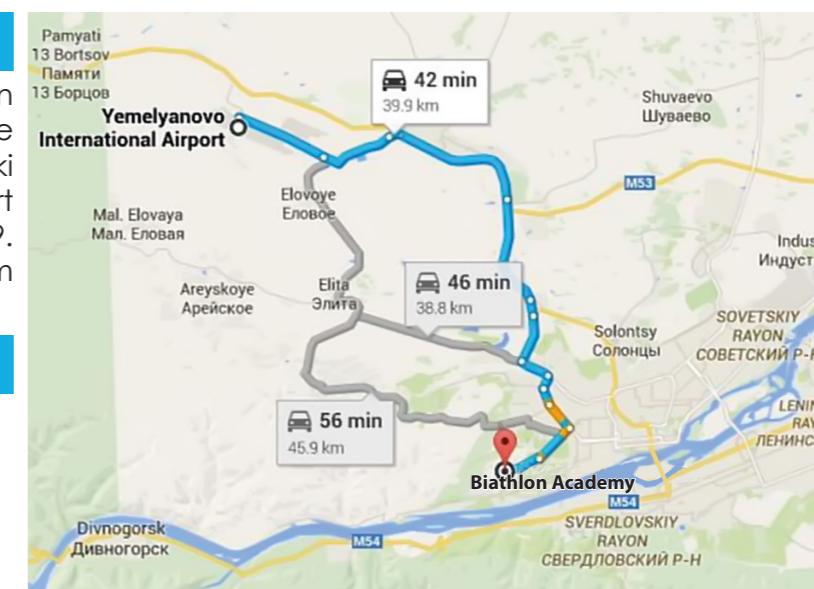
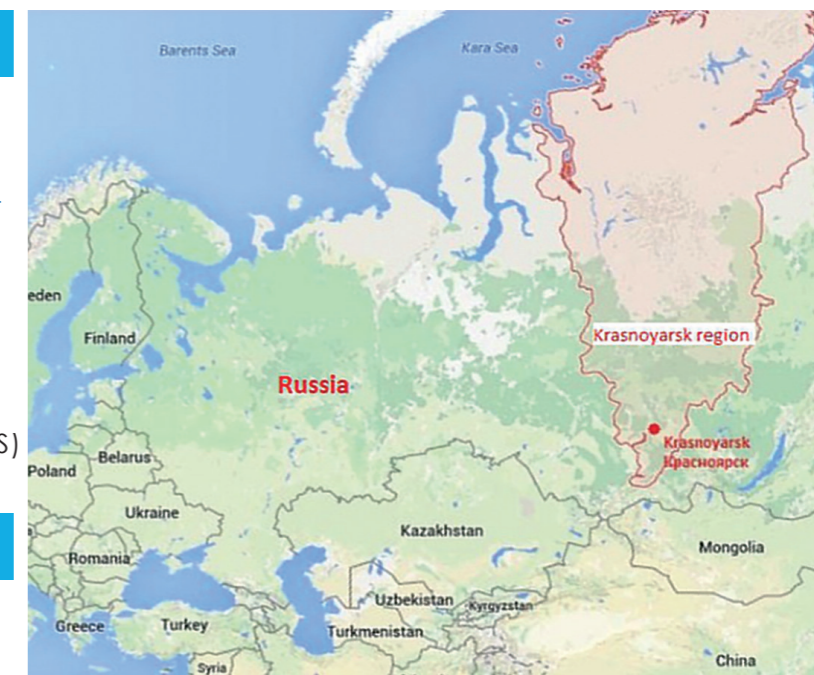
- ▶ Senior Event Adviser: Sixten Sild (EST)  
Assistant Event Adviser: Markku Vauhkonen (FIN)  
National Controller: Arkadiy Vedin (RUS)

## VENUE

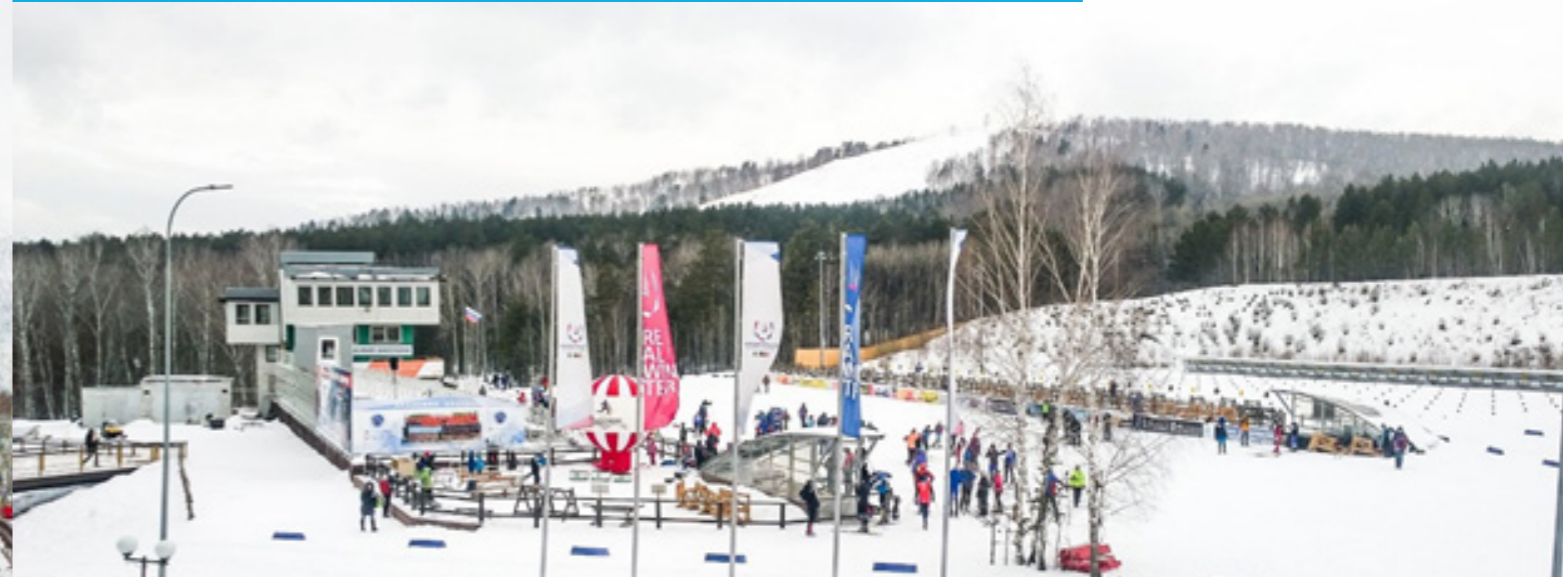
- ▶ The event will be held at the Ski Center "Biathlon Academy", Krasnoyarsk, Russia. Event venue GPS coordinates: 55.996182, 92.732495. Ski Center "Biathlon Academy" is the sport venue of the World Winter Universiade in 2019. International airport Yemelyanovo is at 39 km distance from the event center.

## CONTACTS

- ▶ Orienteering Federation of the Krasnoyarsk Region  
Address: Russia, Krasnoyarsk, Krasnoy Armii 3  
Phone: +79138326650  
E-mail: [wsoc2017@mail.ru](mailto:wsoc2017@mail.ru)  
Web-site: [www.wsoc2017.ru](http://www.wsoc2017.ru)







## ACCOMMODATION

- ▶ Different categories are available ranging from high-class hotels to student dormitory with full board. Alternatives with self-catering opportunities will be available on request. All accommodation alternatives offered by the organizers are located within 10-15 minutes by car from event venue.

The participants are strongly recommended to stay at the Student Dormitories at the Siberian Federal University (SFU) Campus which is located 2 kms from the event center and provides training (ski tracks, gym, swimming) facilities on a walking distance. The organizers provide transports from the SFU Campus to the event centre during the Championships. Also other official program events (Opening ceremony and Prize Giving ceremonies) will be held at the SFU Campus.

The accommodation categories are:

Type A: Student dormitory, Single room, Full board, 60 € per night

Type B: Student dormitory, Double room, Full board, 40 € per night

Type C: Student dormitory, Double room, no meals, 20 € per night

Kitchen facilities are available at each room and a convenience store in the dormitory building.

Canteen facilities for full board are located in the ground floor of the dormitory building.

Hotel accommodation available on request from 2\*\* to 4\*\*\*\* outside the Campus in Krasnoyarsk city centre.

Accommodation booking form is available at the event website from June 1, 2016 and the deadline for booking and payments is January 31, 2017. E-mail for bookings and additional information: [wsoc2017@mail.ru](mailto:wsoc2017@mail.ru)

## IMPORTANT DATES AND DEADLINES

- ▶ Deadline for preliminary entries is December 19, 2016.
- ▶ Deadline for requests for visa invitations to the organizers is January 15, 2017.
- ▶ Deadline for booking of the accommodation and catering is February 2, 2017.
- ▶ Deadline for payment of entry fees and accommodation is February 2, 2017.
- ▶ Deadline for registration of the Media representatives is February 20, 2017.
- ▶ Deadline for final entries is February 20, 2017.

## CLASSES AND PARTICIPATION

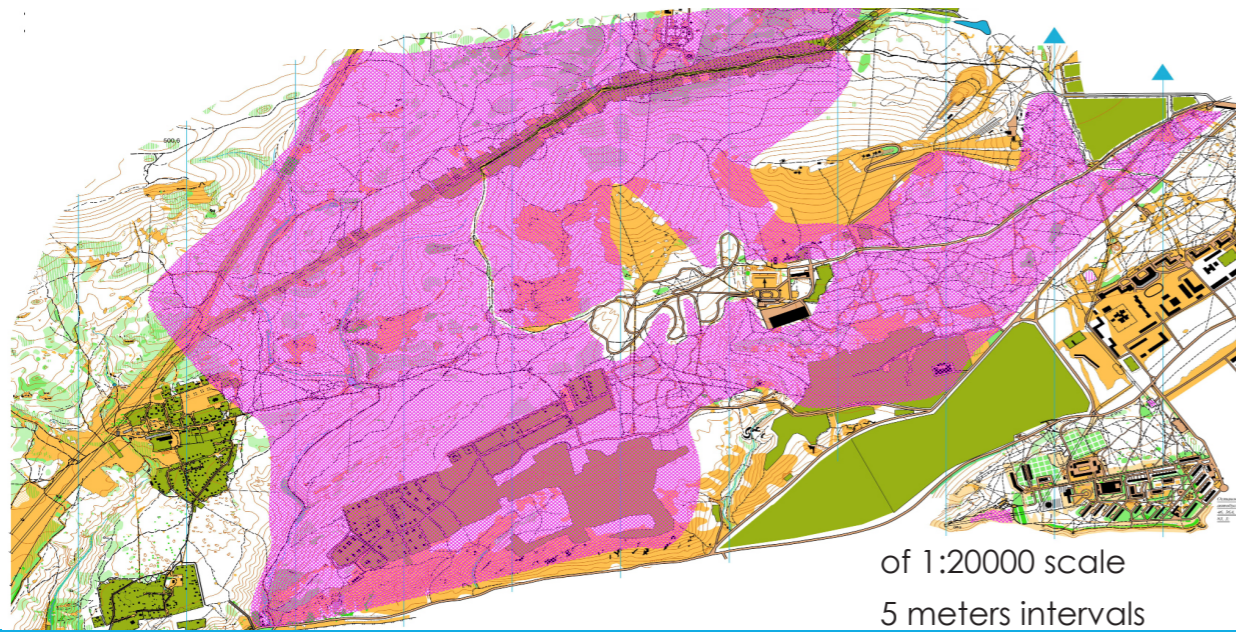
- ▶ World Championships have two classes: W21 and M21.
- ▶ Competitors who are representing a Federation shall have full passport-holding citizenship of the country of that Federation.
- ▶ All competitors represent a Federation. Each Federation may enter a team of an unlimited number of competitors and a maximum of 10 team officials.
- ▶ In each individual competition, every Federation may enter up to 4 women and 4 men and, in addition, the current World Champions for the distance may be entered by their Federation(s) provided they are members of the Federation's team.
- ▶ In the Relay, each Federation may enter one women's team and one men's team, each consisting of 3 team members. Teams with competitors from more than one Federation are not allowed but incomplete teams may start.
- ▶ In the Sprint Relay, each Federation may enter one team consisting of 2 team members of whom at least one must be a woman. Teams with competitors from more than one Federation are not allowed and incomplete teams may not start.

## ▶ PROGRAM

Sunday, 5 March	Arrival	Thursday, 9 March	Middle distance, W21
Monday, 6 March	Arrival, Model Event, Team Officials and Media Race (prior to the Model Event)	Friday, 10 March	Middle distance, M21
		Saturday, 11 March	Long Distance, W21 and M21
Tuesday, 7 March	Sprint Relay	Sunday, 12 March	Relay, W21 and M21
Wednesday, 8 March	Sprint, W21 and M21	Monday, 13 March	Departure

The races will take place in the afternoon (2-6 pm local time).





of 1:20000 scale  
5 meters intervals

## EMBARGOED AREAS

## TERRAIN DESCRIPTION

▶ The area is situated in the north-western part of the city of Krasnoyarsk, on western and southern slopes of the hill Nikolaev, the territory of the "Biathlon Academy" and the surrounding area are forbidden to visit and do training from 31 December 2014. The only exception is the use of Biathlon Academy roller ski tracks (see map) that are allowed for training until October 1, 2016. For any athlete wanting to visit the roller ski tracks, they must contact and report to the organizers in advance. Failing to report may lead to exclusion from the World Championships. For information regarding training in the Krasnoyarsk area, please contact the organizers.

▶ The races take mostly place on the southern slope of Nikolaev hills. The terrain is relatively open and covered by mixed forest (birch and pine). A 6-8 metres wide biathlon ski track dominates the centre of the terrain. Network of tracks and paths in the area is very dense. 90 percent of the terrain is covered with forest with good visibility. The highest point of the terrain is 505 meters above sea level. The height differences in the terrain are up to 200 metres. There are some steep downhills that will require caution. Some parts of the terrain contain deep gullies and cliffs.



## OPPORTUNITIES FOR TRAINING

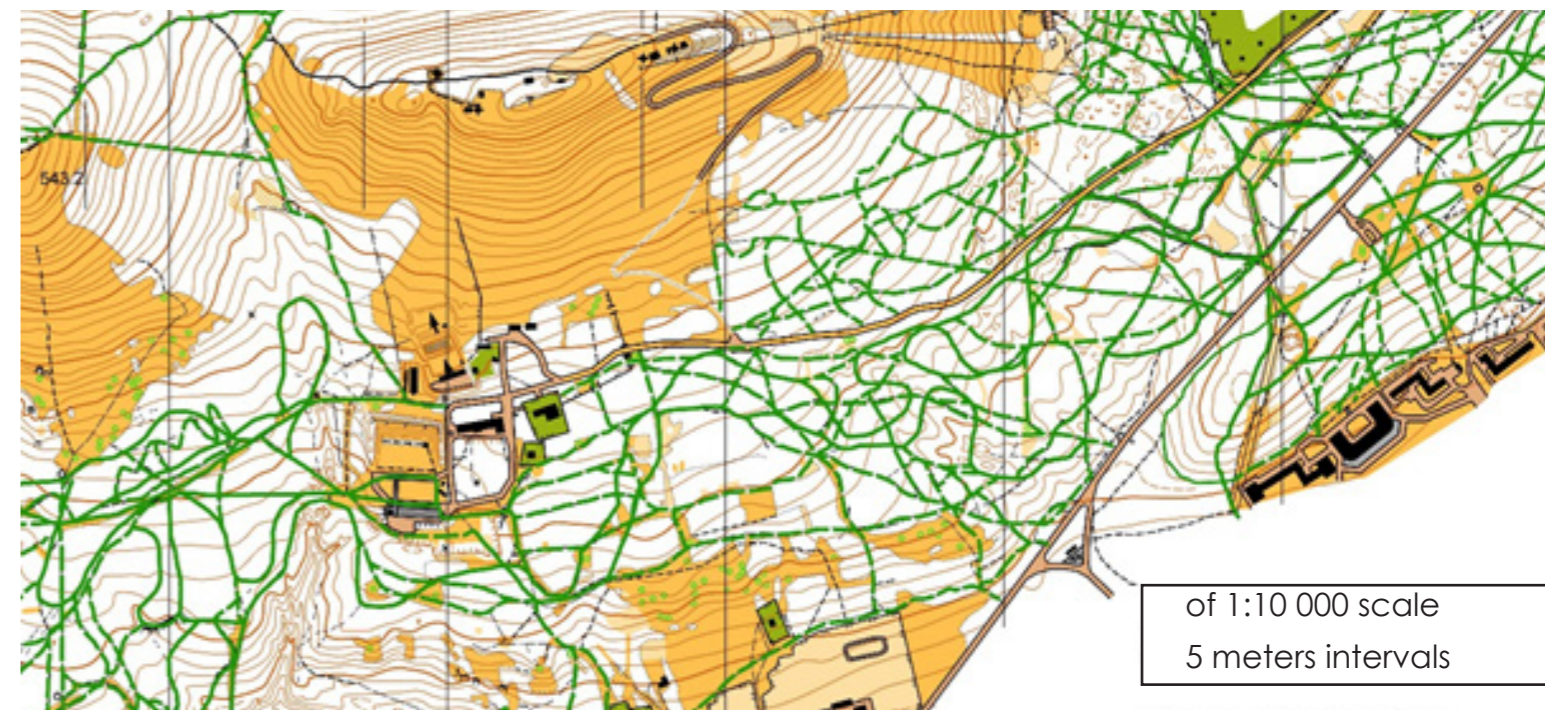
▶ Competitors can take part in any events in the same region offered in the Krasnoyarsk Region in 2015-2017. The events and conditions will be similar to the World Championships. The competition calendar is available at [www.kfso.ru](http://www.kfso.ru). <http://kfso.ru/index.php/calendar>.

## MAPS

Competition	Scale	Eqv. distance	Standard
Sprint Relay	1:5000	5 M	ISSkiOM2015
Sprint	1:5000	5 M	ISSkiOM2015
Middle	1:10 000	5 M	ISSkiOM2015
Long	1:12 500	5 M	ISSkiOM2015
Relay	1:7500	5 M	ISSkiOM2015

## MAPS

▶ Previous map from the competition area used in the Russian Winter Universiades in March 2010.



of 1:10 000 scale  
5 meters intervals





## ► PRELIMINARY COURSE INFORMATION

Competition	Class	Course Length	Estimated time
Sprint Relay	M 21	1,8 км (1 leg)	6-8 min (1 leg)
	W 21	1,3 км (1 leg)	6-8 min (1 leg)
Sprint	M 21	3,6 км	13-15 min
	W 21	2,8 км	13-15 min
Middle	M 21	7,5 км	40-45 min
	W 21	6,0 км	40-45 min
Long	M 21	20,0 км	95-100 min
	W 21	13,5 км	75-80 min
Relay	M 21	6,6 км	30-35 min (1 leg)
	W 21	5,2 км	30-35 min (1 leg)

## ENTRIES

- Deadline for preliminary entries is on December 19, 2016. The entries have to include: number of participants (men, women), relay teams and team officials. Additionally the entries must provide the name of the team manager, address, email and phone number. The deadline for final entries is on February 20, 2017. The entry forms are available at the event website ([www.wsoc2017.ru](http://www.wsoc2017.ru)) from 15 November, 2016 onwards. E-mail address for entries: [wsoc2017@mail.ru](mailto:wsoc2017@mail.ru).

## ENTRY FEE

- Entry fee includes transportation during the event (transports from/to airport/railway station, transports from the SFU Campus to the Event Centre and back), waxing rooms/ski storage, and parking.

Competition	Until 5 February (€)
Sprint relay	80 € per team
Sprint	40 € per competitor
Middle	40 € per competitor
Long	40 € per competitor
Relay	120 € per team
Closing Banquet	40 € per participant

Team official and Media accreditation fee (incl. transports, parking and team official/media race fee): 80 € per person.

## PAYMENT AND BANK DETAILS

- Entry and accreditation fees should be paid before 2 February 2017.
- Receiver's Correspondent  
DEUTDEFF  
Deutsche Bank AG, Frankfurt am Main
- Account with Institution  
SABRRUMM  
SBERBANK, MOSCOW
- Beneficiary Customer  
40703978231000000001  
The Executive Directorate of the 29th Winter Universiade 2019 in the city of Krasnoyarsk  
INN 2463257014, Krasnoyarsk, Russia

## VISA

- The Russian Federation requires visas for most nations. The visa requirements may change and you are responsible to check your visa requirements from the closest Russian Consulate and/or Visa Centre. The unofficial information about the visa requirements is available at [http://ru.wikipedia.org/wiki/Визовая\\_политика\\_России](http://ru.wikipedia.org/wiki/Визовая_политика_России). Upon the receipt of required data from the national federations, the organizers will issue a visa invitation through the Russian Ministry of Foreign Affairs and forwarded to the Consulate or Visa Centre of your preference. The national federations are responsible for the correctness and completeness of the data and for managing the visa application process locally. Further information and assistance can be asked from the organizers through email: [wsoc2017@mail.ru](mailto:wsoc2017@mail.ru).

## TRANSPORT

- The organizers will provide transports throughout the event. From/to the airport/railway station, and shuttle busses from the SFU Campus (accommodation) to Event Centre (Biathlon Academy ) on competition days. Utilization of own cars and transports is not recommended due to limited parking facilities at the Event Centre.

## PUNCHING SYSTEM

- The SportIdent Air+ touchfree punching system is used in all competitions. The organizers provide the punching SI-cards.

## ANTI-DOPING CONTROL

- The use of doping is strictly prohibited. Testing will be organized according to the WADA and IOF regulations. ([www.wada.org](http://www.wada.org) and [www.orienteering.org](http://www.orienteering.org))

## CLIMATE

- Krasnoyarsk is located on the Siberian taiga with a strong continental climate. The continental climate is represented by mostly dry weather and large temperature variations. The precipitation is low, average 465 mm per year, with 15 mm in March. Winters are cold with average temperature in March -14,3 °C, minimum temperature - 35,2 °C and maximum 13,7 °C. Maximum snow depth in March 62 cm with an average around 40 cm.

## MEDIA

- The media facilities are available at the event centre including high speed internet access. Accreditation of media representatives is for free, but the media representatives are required to register themselves and their media (televisions, radio, press and photographers) by February 13 2017 to the organizers by email to [wsoc2017@mail.ru](mailto:wsoc2017@mail.ru). The form for media registration and accreditation is available at the event website as of November 15, 2017. The WSOC2017 media contact person is Julia Romanyuk, phone +7 923 758 2019.