



Stowarzyszenie Rozwoju
Orienteeringu

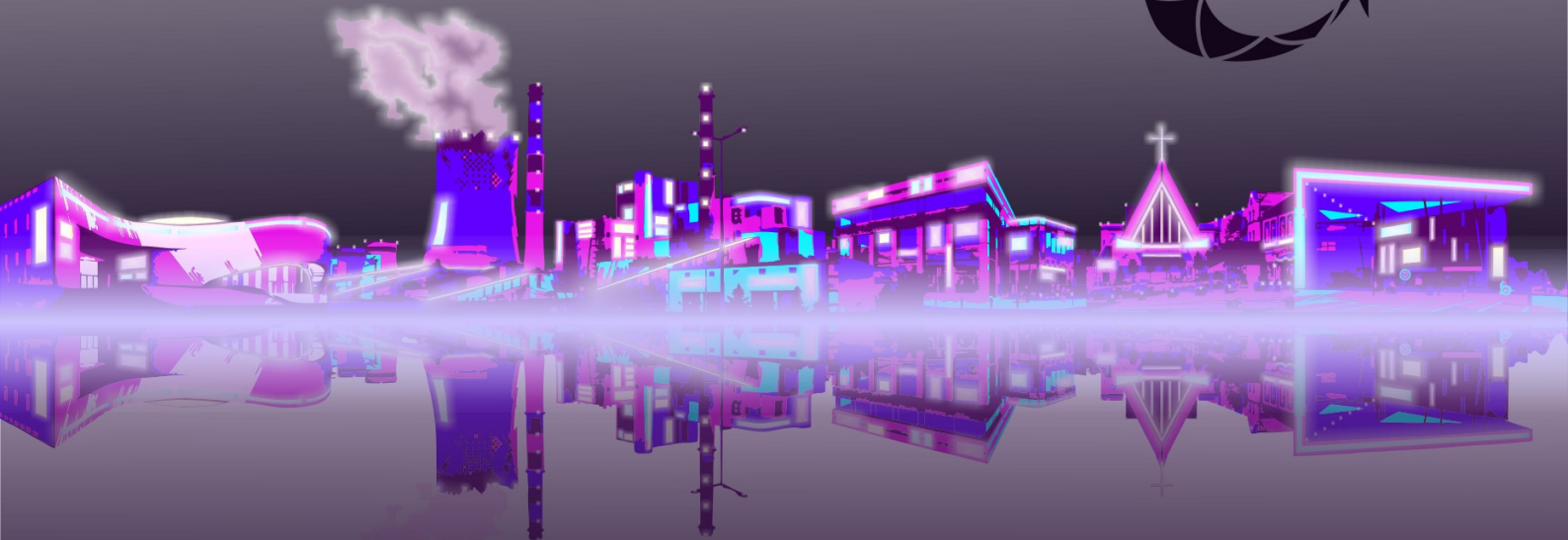


DRAGON CUP

FINAL ROUND OF THE EUROPEAN CUP IN TRAILO 2024
WORLD RANKING EVENT

8-10th NOVEMBER, 2024
JAWORZNO, POLAND

BULLETIN 1



13.08.2024



Organizer:

Stowarzyszenie Rozwoju Orienteeringu

Co-organizer:

Geological and Ecological Education Center „GEOsfera”

Officials:

Event Director: Adam Stalka

Mapper: Adam Stalka

Course setters: Hanna Kapońska, Marta Kapońska, Adam Stalka

Graphic designers: Hanna Kapońska, Marta Kapońska

Event Adviser: Maciej Urbaniak

Bulletin 2:

Bulletin 2 will be published in the week before the competition.

Classes:

Elite (EO – open, EP - physically challenged, EJ – juniors), Amateurs (A).

Elite - Long courses with a high level of difficulty, intended for advanced competitors.

Amateurs – Short courses with a lower level of difficulty, intended for beginner competitors.

Dragon Cup:

We will keep a total classification of the Dragon Cup, which will be summarized at the end of the competition. Details of total results calculation will be provided in bulletin 2.

Program:

- Friday 8th November:
Preo Sprint – Arboretum Park Gródek (12:00 - 15:00),
- Saturday 9th November:
Tempo (WRE, ECTO) – Geosfera (11:00 - 14:00),
Night Preo – Geosfera (17:30 - 20:00),
- Sunday 10th November:
Preo (WRE, ECTO) – Arboretum Park Gródek (10:00 - 14:00).

Estimated times! Courses times may change! The exact times of the courses will be presented in Bulletin 2.

Not part of Dragon Cup:

- Monday 11th November:
A familiar club not far from Jaworzno organizes the Gliwice TrailO Championship. More information to come.

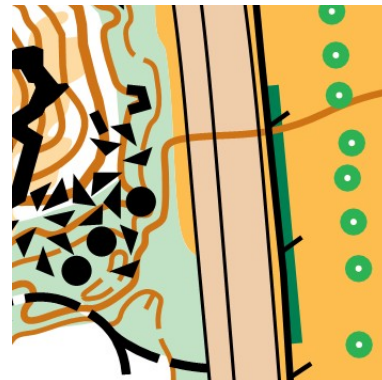
Maps and terrains:

Map „Geosfera” – ISSprOM 2019-2, revision 6, mapped in scale: 1:3 000,
Contours interval: 2 m, mapped in February - September 2024,

Map „Arboretum Park Gródek” – ISSprOM 2019-2, revision 6, mapped
in scale: 1:3 000, Contours interval: 2 m, mapped in February - September 2024,

Geosfera map includes area of the former Triassic limestone quarry Sadowa Góra. This area is arranged for the needs of visitors, creating an education center. Most of it is not covered with any vegetation, so visibility is very good. In the remaining part, the vegetation forms small clusters, more often they are low trees or shrubs, which greatly limit visibility in these areas. Many rock objects appear at the bottom of the quarry and in its slopes. Within the quarry there are many small architectural objects and several utility buildings. There are many paths and sidewalks prepared for visitors.

Arboretum Park Gródek map includes excavations after dolomite exploitation of the former Szczakowa Cement Plant. Despite its post-industrial origin, it is an area of exceptional natural values. There is a mosaic of natural habitats: thermophilous grasslands, meadows, rocky habitats, wetlands, water reservoirs and oak-hornbeam forests. Most trees significantly limit visibility, but there are many open areas and water reservoirs within the arboretum. Rock objects are located mainly on the slopes of the quarry, as well as at their bases in the form of rock rubble. The main paths are asphalt, there are also countless bicycle dirt tracks.



Embargoed areas:

The maps presenting the embargoed areas can be found at the link:

<https://bit.ly/4cE9oSS>

Courses:

For WRE/ECTO courses, approx. 35 tasks and 2 time controls on PreO course and approx. 8 clusters of 5 tasks each on TempO course. Information for other courses and detailed information for WRE/ECTO courses will be presented in bulletin 2.

Entries and fees:

Elite Class (E-class) competitors register for the WRE/ECTO stages via IOF Eventor.

WRE/ECTO E-class

TempO - <https://eventor.orienteeing.org/Entry?eventId=7996>

PreO - <https://eventor.orienteeing.org/Entry?eventId=7997>

Registration form for remaining stages for E-class and all stages for foreign competitors in A-class: <https://forms.gle/7UGsBvorWFZEK9fn6>

Local amateurs competitors register according to separate information.

Entries deadlines for all competitions in all classes – 31.10.2024 (Thursday).

Payment in EUR - cash only. Payment in PLN is possible in cash and to a bank account. Transfer details can be found on the next page. If you want to pay in EUR be sure to have the exact amount prepared in cash. Entry fees are listed in the table below.

Entry fees:

Entry fee for each competition	Elite	Foreign Amatuers
TempO/PreO	25 EUR / 110 PLN	7 EUR / 30 PLN
Sprint/Night Preo	10 EUR / 40 PLN	7 EUR / 30 PLN
Only map (sprint)*	5 EUR / 20 PLN	-

*For elite competitors who did not have the opportunity to take part in Friday sprint and would like to familiarize themselves with the characteristics of the terrain. The map will be available on Saturday in the event center.



Account data in PLN:

Name: STOWARZYSZENIE ROZWOJU ORIENTEERINGU

IBAN: PL67 1090 2590 0000 0001 4897 6823

BIC (SWIFT): WBKPPLPP

Purpose of payment: Dragon Cup + Name and Surname

We accept late entries until 05.11.2024 (Tuesday). The entry fee for late entries increases by 50%. Payment only in cash.

We issue invoices for paid entry fees. Please submit your request via email: orienteering.klub@gmail.com

Assistance:

Pushers and punching assistance must be arranged by the participants.

Recording system:

PreO: Toe Punch, provided by the organizer.

Timed controls: ANT

Transport arrangements:

Jaworzno is located between two international airports (Katowice - Pyrzowice, Kraków - Balice), up to 50 km away. The A4 highway runs close to Jaworzno and the A1 highway runs a little further. They enable quick access to Jaworzno also from airports in Rzeszów (approx. 2 h 15 min), Wrocław (approx. 2 h 30 min), Warsaw (approx. 3 h - Chopin Airport, 3 h 45 min Modlin Airport) and other Polish and foreign airports. You can reach Jaworzno also by train (Jaworzno Szczakowa station). Direct trains run mainly from Katowice and Kraków - both cities are excellent transfer hubs. You can reach Katowice and Kraków by train or bus from the previously mentioned airports as well as other Polish and foreign cities, e.g. Prague, Bratislava, Vienna, Budapest or Ljubljana. Public transport is very well developed in Jaworzno and other neighboring cities that are part of GZM Metropolis, so we recommend this option for moving around during competitions. At a later date, we will prepare a guide that will make it easier for you to reach the competition centers.

Accommodation:

There is a selection of accommodation options in Jaworzno itself and neighboring cities. If you plan to travel by public transport, we recommend looking for accommodation directly in Jaworzno, or close to the Katowice - Kraków railway line.

National Independence Day:

If you stay in Poland until Monday, November 11th, please take into account that this day is a national holiday (National Independence Day). Therefore, public transport will run according to holiday (Sunday) schedules, and most facilities/shops will be closed (just like on Sunday). Celebrating the holiday in most places in Poland does not significantly affect the ability to travel (except for Warsaw), however, if we know about major problems, we will inform you before the competition.

Polish Maldives:

Arboretum Park Gródek is often called the Polish Maldives, and international media write about it. Therefore, it is a popular place among tourists, and the competition will take place over a long weekend, so you will share the routes with other people visiting the Park. However in November, the number of visitors will not be a problem in organizing the competition.



Fot. Marta Kapotka

Social media:

We encourage you to follow our profiles on social media, where we publish a lot of interesting and useful information.

Facebook: <https://www.facebook.com/orienteering.klub>

Instagram: <https://www.instagram.com/orienteering.klub/>

Contact:

You can contact us via the club's email: orienteering.klub@gmail.com or directly with the event director, Adam Stalka - email: stalkaadam@gmail.com, phone: +48 730 838 610.

Closing remarks:

By registering the competitor agrees to the terms of this bulletin, gives his/her consent for publishing personal data such as name, surname, club and competition results and personal image on photographs and other post-event materials and publications. The competitors should be insured on their own.

Welcome to Dragon Cup!

