



# Estonian Sprint Cup 1st event

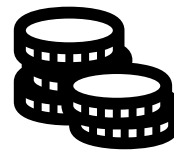
## JÜRIPÄEVA SPRINT INDIVIDUAL SPRINT



20. aprill 2024



Sikupilli, Tallinn



20/30€

**ORGANISER: NGO TERRA-O**

**EVENT DIRECTOR: SERGEI RJABŐŠKIN**

**EVENT DIRECTOR ASSISTANT : MAREK KARM**

**RESULTS AND TIME KEEPING: MICHAEL RAER**

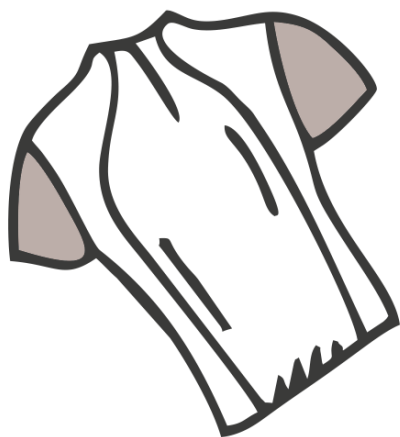
**COURSE SETTER: SERGEI RJABŐŠKIN**

**CONTACT: [INFO@TERRA-O.EU](mailto:INFO@TERRA-O.EU)**

**EVENT WEB-PAGE: [TERRA-O.EU](http://TERRA-O.EU)**

**FB EVENT: [FACEBOOK](https://www.facebook.com/terrao)**

**IOF INSPECTOR: JŪRI JOONAS**



### COMPETITION CLASSES

Attendance classes: MN 14, 18, 21, 40, 50. The MN21 competition is a world rankings competition (WRE) and the starting order is determined by the status of the world rankings. Competitors not found in the rankings shall be drawn at the beginning of the starts. The starting interval in all classes is 1 minute.

M race classes can be run by all genders. More information [here](#).

### ENTRIES AND ENTRY DEADLINES

You can register for the competition online at <https://eventor.orienting.org/Events> until 14.04.2024 midnight. Discount registration ends on 07.04.2024 at midnight. In all classes start fee until 07.04.2024 is 20€. After 08.04.2024 until 14.04.2024 start fee is 30€.

The participation fee must be paid at the same time as the registration. Registration shall enter into force only after receipt of the participation fee in the current account of the club conducting the competitions: **MTŪ TERRA-O - EE472200221084034185**.

The organiser has the right not to allow the participants who did not pay the participation fee to start.

**Participation in the competition takes place at your own risk. The organiser shall not be liable for possible accidents and their consequences.**





## COURSE PARAMETERS

Class	Lenght (optimal)	Controls
W14	1,5 km	11
M14	2,0 km	12
W18	2,9 km	18
M18	3,4 km	21
Women	3,8 km	23
Men	4,1 km	23
W40	3,4 km	21
M40	3,8 km	23
W50	2,5 km	16
M50	2,9 km	18

All courses have mandatory passage.

## COMPETITION ARENA

The Sikupill sprint landscape is located in the beautiful area of Tallinn. Including apartment buildings built at very different times, both regularly and irregularly, and the gardens, gates, children's playgrounds and hedges between them. The relief is non-existent. High-load traffic trails through the landscape create an opportunity for the course setter to organise decisive road choices with the help of crossings.

**Dangerous areas: streets with traffic. Be careful when crossing it!!**

**Previous maps:**

<https://orienteerumine.ee/kaart/?eolcode=2016057>

<https://orienteerumine.ee/kaart/?eolcode=2017047>

**The scale of the map in all competition classes is 1:4000.**

**Map was made during spring 2024 by Sergei Rjaboskin.**

**Maps will be printed on a moisture resistant paper and will not be placed in plastic bags.**

Separate control descriptions will be available at the prestart with the maximum dimensions of 4 x 15 cm.

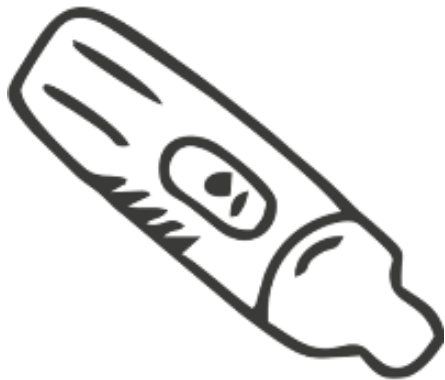
**Barriers:** Yard barriers are marked on the map as impenetrable fences. If a hole in the fence is left on the map, it is therefore possible to pass by the barrier. Some barriers may be temporarily open during the competition, but the organizer cannot guarantee that the barrier will be up or down.

**Road crossings:** It is allowed to cross roads marked as prohibited only at marked places. At road crossings, a judge in a reflective vest checks compliance with the rules of the prohibited area.

**Dangers:** The competition takes place in an area open to traffic, so the competitors must be especially attentive when crossing the roads within the quarter. To calm the traffic, there are organizers in reflective vests on the terrain. In addition, in some places in the landscape, there are Soviet-era washing drying places in the courtyard area, which are not marked on the map for the sake of readability. However, playgrounds from different eras and the basics of carpet weaving are marked on the map.



**Artificial obstacles:** Temporary fences have been added to the terrain with red-and-white film tape. For the sake of readability, artificial obstacles are marked on the map with an uncrossable fence symbol. In the countryside, most hedges are impassable. In the spring, they may not be very visible.



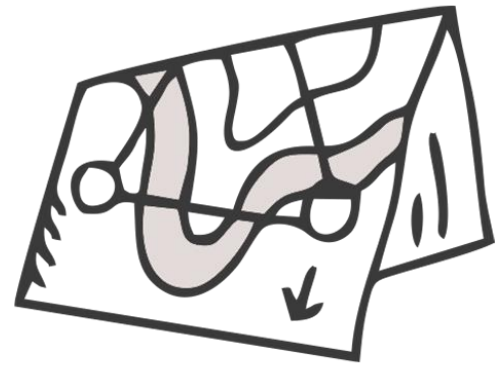
## PUNCHING SYSTEM

SPORTident Air+ punching will be used for competition. It is possible to rent SI Air+ sticks from the organisers for 3€.

**About SI Air+:** Organizers remind you that each athlete must ensure that the battery of their SI Air+ card is full enough to compete. The SI Air+ card battery check station is available in the start quarantine area on both days of the competition. The SI Air+ card is activated in the CONTROL (CHECK) station for the competition. Don't forget to activate your SI Air+ card at CHECK station. Touch-free SI Air+ card has a usage range of 50 cm at control points! The SI Air+ card flashes and beeps when passing through the control point is recorded on the card. The SI Air+ card always works (also with an empty battery) in normal mode, i.e. when the stick is inserted into the control point station hole, the control point is saved on the stick. Other devices (e.g. GPS watches, pulse belts/watches) may interfere with SI Air+. It is recommended not to wear the SI Air+ card and GPS watch on the same arm. The athlete is responsible for the correct passing of the control points. If in doubt, stick the SI-card in the station hole and make sure the station beeps and flashes.

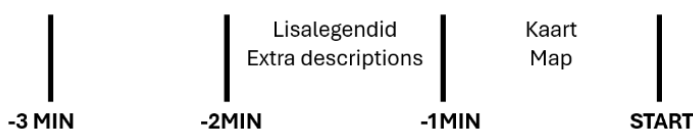
## STARTS

Entry to the starting area closes at 15:00. All competitors have to go through the event center before they start, where they can get the start numbers. Competition information, start protocols have been printed in the starting area. In the starting area, there is a roof for the competitors provided by the organizer. The use of mobile phones, computers or any other communication device, as well as obtaining information about the race and competition landscape by other means is strictly prohibited after 15:00 until start time. Pre-start time is 3 minutes. Additional control descriptions will be available 2 minutes before start. The starting order is determined randomly, except for the elite groups in the World Ranking Event, where the starting draw is made according to the World Sprint Ranking on April 15.



From competition center to start 300 meters. Peterburi tee allowed to cross only at traffic light near the Circle-K. Traffic light cycle is 20/90.

There no clothes transport from the start.



The competitor can take an additional legend from the start. One minute before the start, the competitor stands next to the cards of his competition class. At the start, the

competitor takes the card and moves to the competition track. Passing the K point is mandatory. Only the control's sequence number is marked on the map next to the control's ring. The identification number can be found in the track legend on the map. For readability, the controls sequence number is outlined in white. **Participants are prohibited from using running shoes with metal studs!**

**EXPECTED WINNING TIME:** 14-18 min.

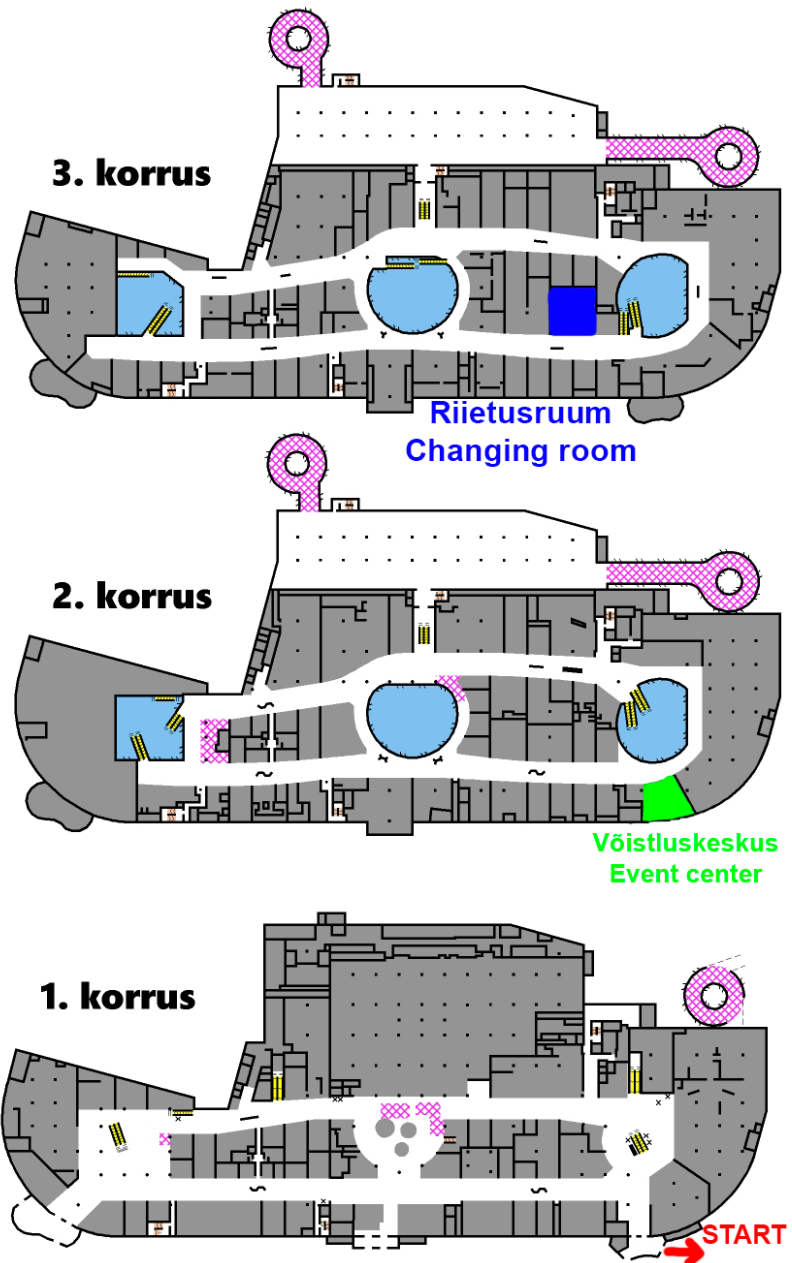
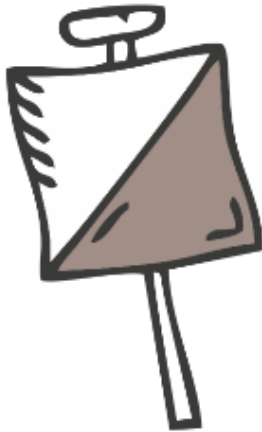
**Maximum running time:** 45 minutes.

## EVENT CENTER

Event centre is located near in the T1 shopping center 2nd floor. The competition centre has a secretariat, parcel storage, toilet, shower.

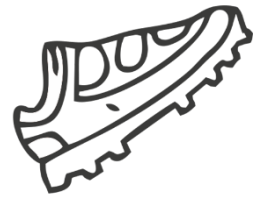
We recommend leaving the car at home and coming to the event using public transport.

**Parking:** You can park in the underground parking lot and in the parking garage for 4 hours free. The start is automatically recorded in the Find My Car system, and there is no need to use the parking meter. You can find more information about parking on the [shopping center's website](#).



## PROGRAM

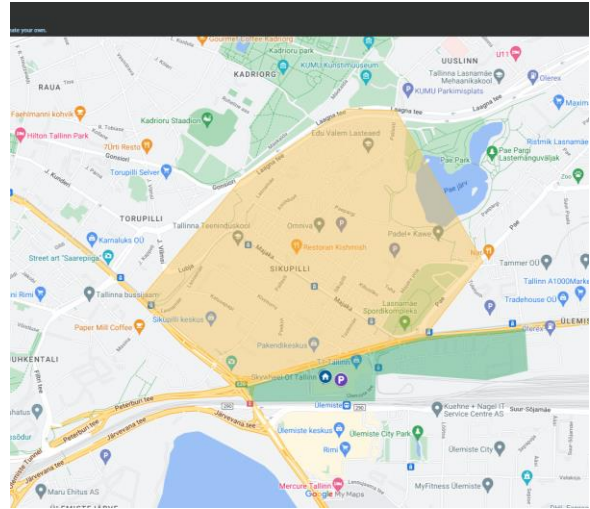
13:00 event center open  
15:00 First start  
~17:00 Award ceremony  
18:00 Event centre close  
From finish to event center 800 meters.



## EMBARGOED AREAS

The marked competition area is the embargoed area. For competitors, team officials and others who, through knowledge of the terrain or the competitions, may influence the results of the competitions, it is prohibited to enter the embargoed areas. We kindly ask you to follow the rules of fair play and not to visit the competition terrain in order to gain an advantage in the competition!

Warm-up up is allowed only outside the embargoed area or following the markings to the start.



## RESULTS

Official results of the event and Estonian Sprint Cup stands will be published on the competition website <http://www.terra-o.eu> no later than one day after the competition has taken place.

## PRIZE GIVING

In each class top 3. competitors.



## FAIR GAME

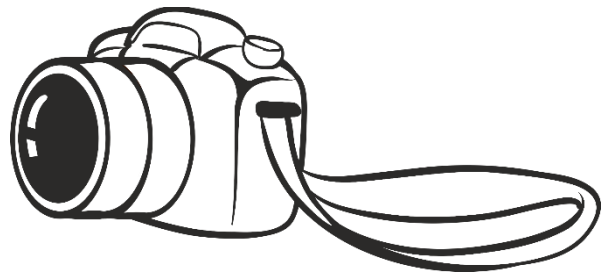
Participants respect clean and honest sports. The anti-doping rules of the IOF apply in full and consequently Estonian Anti-Doping and other anti-doping organisations have the right to conduct doping checks among all participants.

Complaints must be submitted in written form no later than 15 minutes after the announcement of the official results. Complaints are reviewed by the organizers. The protest must be submitted in written form no later than 15 minutes after the organizers' response to the complaint. The protest is examined by a jury led by the event inspector.



## PHOTO AND VIDEO DISCLAIMER

Please note that photographs and footage will be taken throughout the event. These will be used by the event organisation for marketing and publicity purposes in our publications, on our website and in social media or in any third-party publication during and after event. Please contact the event director if you have any concerns.



## ACCOMMODATION

Accommodation options can be found at <http://www.airbnb.com> and <http://www.booking.com>.



## JÜRIÖÖJOOKS

After sprint, it is possible to participate in the night relay held on the same day in Saku. For details, see the [website of the 63<sup>rd</sup> Jüriööjoks](#).



## SUPPORTERS

