



# EUROPEAN TRAIL ORIENTEERING CHAMPIONSHIPS

8 – 12 MAY, 2024  
TURKU, FINLAND



## PUBLIC RACES INFO

March 2024

## Table of Contents

Time Schedule .....	2
Entry fees .....	3
Entries .....	3
Escorts.....	3
Other competition information .....	3
Course information .....	3
Punching system / Timing .....	3
Race information / PreO 1 .....	4
Race information / PreO 2 .....	5
Race information / Tempo Qualification .....	6
Transport arrangements .....	7
Contacts .....	7
OFFICIAL COMPETITION SHIRT .....	8

## Time Schedule

DATE	TIME	WHAT	WHERE
<b>Friday</b> <b>26.4.2024</b>	23.59	Entry deadline Public races	
<b>Thursday</b> <b>9.5.2024</b>	15.30 18.00	<b>PreO1 Public</b> Mass start Finish closes	Kuninkoja, Turku
<b>Friday</b> <b>10.5.2024</b>	15.30 18.00	<b>PreO2 Public</b> Mass start Finish closes	Suopelto, Naantali
<b>Sunday</b> <b>12.5.2024</b>	11.30 13.15	<b>TempO Qualification Public</b> Queue Start Finish closes	Impivaara, Turku



## Entry fees

15 € / competition.

All accredited competitors and companions can participate for free.

## Entries

With form behind this link: [Entry form](#)

Finns register through [Irma](#)

Entry deadline is April 26<sup>th</sup> 2024. Accredited persons should inform about their participation latest 10am on competition day in Event Office/Info during it's opening times.

## Escorts

The competitors that need an escort shall bring an escort with them.

## Other competition information

The maps of ETOC 2024 follow the International Standards for Sprint Orienteering ISSprOM2019, version valid on 1.1.2024. All maps are prepared in scale 1:4 000 and enlarged to 1:3 000, contour interval 2 m.

All maps made by Juha Hiirsalmi. Open source lidar data from National Land Survey of Finland and urban survey material from the cities of Turku and Naantali processed by Karttahemmot / Eero-Antti Lonka.

## Course information

EVENT	Length	Controls	Timed controls	Road surface	Climb	Toilet/Water
PreO1	0.9 km	32	2 x 3 task	Smooth gravel	20 m	Arena&Course
PreO2	1.1 km	33	2 x 3 task	Smooth gravel	25 m	Arena&Course
TempO Qual.	1.8 km	-	6 x 5 task	Smooth gravel	30 m	Arena

## Punching system / Timing

The ToePunch system (toe.yq.cz) will be used for punching and time keeping in PreO competitions and on PreO-part of the Relay. ToePunch chipsets will be provided in the team envelope.

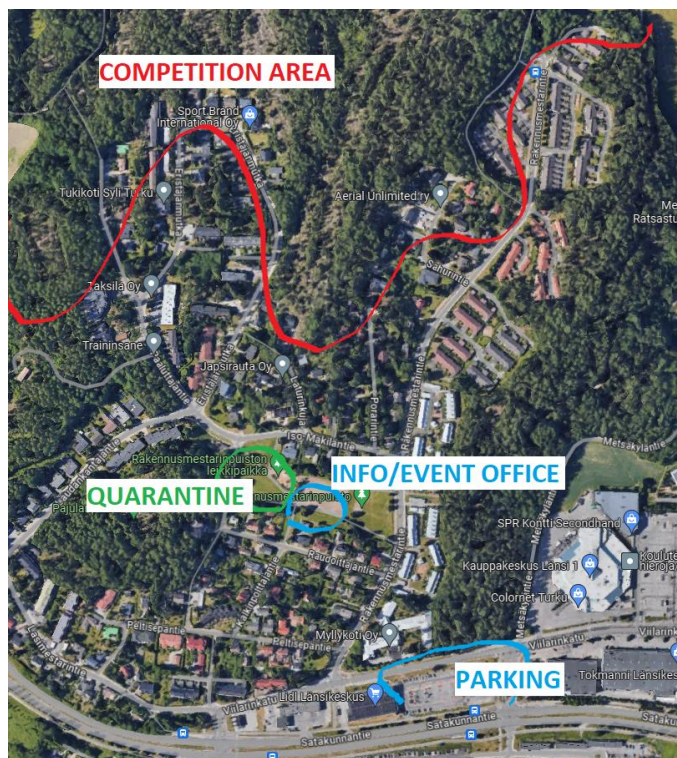
The ANT system (ant.yq.cz) will be used at timed and TempO stations.

## Race information / PreO 1

Distances:

Parking – Event Arena	300-500 m
Bus stop – Event Arena	400 m (Lines 6 and 7)
Event Arena – Quarantine	50 m smooth gravel / grass
Quarantine – Start	500 m asphalt
PreO course	900 m smooth gravel, 20 m climb
Finish – Time Controls	250 m smooth gravel
Time Controls – Event Arena	1300 m asphalt/gravel

Event Arena: Rakennusmestari's park. Coordinates: 60.474706, 22.217018

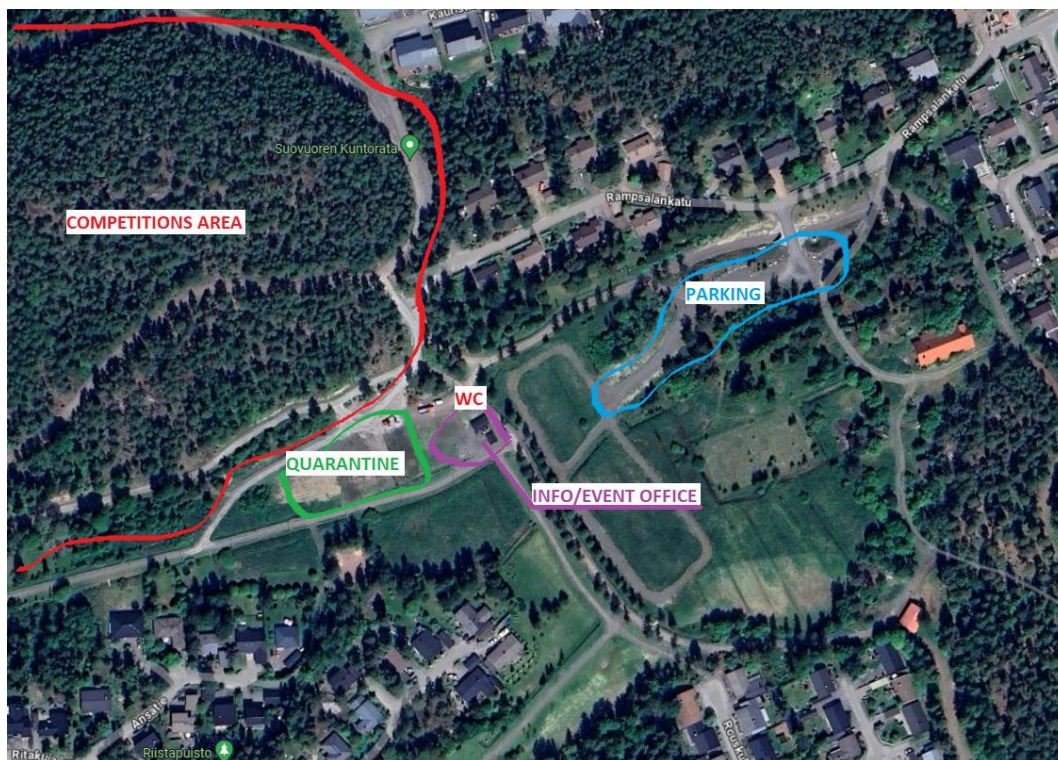


## Race information / PreO 2

### Distances:

Parking – Event Arena	50-200 m
Bus stop – Event Arena	1300 m (Lines 6 and 7)
Event Arena – Quarantine	0 m
Quarantine – Time Control 1	150 m smooth gravel, 10 m climb
PreO, part 1	650 m smooth gravel, 15 m climb
PreO, part 1 finish to part 2 start	350 m smooth gravel, downhill/uphill
PreO, part 2	450 m smooth gravel, 10 m climb
Finish – Time Control 2	100 m smooth gravel
Time Control 2 – Event Arena	450 m smooth gravel

Event Arena: Suovuori outdoor recreation area. Coordinates: 60.491807, 22.048170



## Race information / Tempo Qualification

### Distances:

Parking – Event Arena	0-200 m
Bus stop – Event Arena	250 m (Lines 2, 2A, 2B and 2C)
Event Arena – Quarantine	0 m
Quarantine – Start	0 m
TempO course	1800 m, 30 m climb
Finish – Event Arena	0 m

Event Arena: Impivaara Football Hall. Coordinates: 60.477946, 22.252248





## Transport arrangements

All event arenas can easily be reached by public transport ([www.foli.fi/en](http://www.foli.fi/en)). Only few hundred metres from nearest bus stop.

Single tickets: For single journeys, valid two hours for buses and water buses. Prices: adults €3 with contactless payment, with cash payment on the bus €4. Children under 15 €1.50 with contactless payment, with cash payment on the bus €2.

Daily tickets: Daily tickets provide you with 1-7 days of travel on buses and water buses. You can purchase daily tickets through the Föli app, service points and from R-kiosks. You can also purchase a single day ticket from a Föli ticket machine and from the driver with cash or using contactless payment.

Persons seated in wheelchairs and their escorts may travel free of charge in local buses.

There are parking areas available close to all event arenas.

## Contacts

Email: [etoc2024@tume.fi](mailto:etoc2024@tume.fi)

Website: [www.tume.fi/etoc2024](http://www.tume.fi/etoc2024)

Facebook: <https://www.facebook.com/etoc2024>

Instagram:

[www.instagram.com/etoc2024](http://www.instagram.com/etoc2024)

## Organiser



TURUN METSÄNKÄVIJÄT RY



## OFFICIAL COMPETITION SHIRT



Official competition shirts for ETOC2024 will be the finest premium quality orienteering shirts from TRUE STORY.

TRUE STORY is an endurance sportswear brand based in Riga, Latvia. Established and managed by World Orienteering Champion Edgars Bertuks. Their concept is to offer great looking garments without compromising quality and comfort. All TRUE STORY garments are made in Latvia and all fabrics are sourced from European suppliers exclusively.

You can either preorder this fabulous shirt and receive it in May at the competition without any shipping costs or order it immediately and receive via mail. Order can be done in TRUE STORY webshop: <https://custom.truestorysport.com/en/store/etoc2024>  
Deadline for preorder is the 31st of March.

Find out more about the shirt and click the link above. Remember to check the TRUE STORY website for more excellent sport garments <https://truestorysport.com/>

