

World Masters Ski Orienteering Championships Võru, Estonia

23-25.02.2024

BULLETIN 3

Photo by Reigo Teervalt



KULTUURIMINISTEERIUM



Dear ski-orienteeers family!

It is again with great pleasure to invite You to compete in Estonia. We invite You to Haanja, the second largest ski resort in Southern Estonia to offer You interesting ski orienteering challenges in three disciplines. We are confident that we will be able to handle the organizing of yet another World Ski-Orienteering event in Estonia. We believe in our efforts to provide You a good competition as the last event in 2021, the WSOC in Kääriku were held in much more difficult viral conditions.

The Ski-Orienteering community in Estonia is not large however it is very close and supportive of each other. The organising team is largely made up of members of the two South-Estonian clubs Värška OK Peko and OK Võru, supplemented with our best orienteering experts from various teams.

We hope to offer athletes and other guests exciting and interesting competitions in a cool atmosphere. The aim is to spread the word about orienteering in Estonia and around the world.

Welcome to the city of Võru and the village of Haanja in Estonia.
We wish you all success and of course expect good snow conditions!

Raul Kudre
Chief organiser



Dear Participants!

We welcome You to the World Masters Ski-Orienteering World Championships in Estonia!

Over the years we have organized several major orienteering competitions, and now it is once again time for ski-orienteeers to come to Estonia and compete in excellent nature and interesting orienteering landscapes.

We have selected Kubija and Haanja forests in Southern Estonia for this World Cup. In my youth I have tested my athletic abilities and orienteering skills in this area – therefore I can say with full confidence that this area is very suitable for orienteering enthusiasts to determine who is best of the best.

Enjoy every moment of Your time in Estonia and achieve the best result in Your sports career so far.

Our entire organizing team will do their best to make the competition memorable and successful. I wish You slick track and clever approaches to solving our orienteering riddle. Stay Safe and secure!

Aigar Pindmaa
President of the Estonian Orienteering Federation

Organizers

Orienteering Club Värskä OK Peko, www.peko.ee

Orienteering Club Võru, www.okvoru.ee

Estonian Orienteering Federation, www.orienteerumine.ee

Contact info

Event director: Raul Kudre,

Course setter: Tõnis Erm, Taivo Timmusk

Event secretary: Mare Parve, e-mail: WMSOC2024@peko.ee

Controllers

IOF Senior Event Adviser: Mattias Johansson

Estonian National Controller: Kuno Rooba

Media contact

Media coordinator/press manager Einar Raudkepp

E-mail: einar@sesame.ee

Venue

The event centre will be at Kubija Hotel, Võru, Estonia

<https://www.kubija.ee>

Competition Centre will be in Haanja, Võrumaa, Estonia

[link from Event Center to Competition center](#)

EVENT PROGRAM

Date/ Place	WMSOC
Thursday, Feb 22 Haanja	Model
Friday, Feb 23 Haanja	Sprint
Saturday, Feb 24 Haanja	Long
Sunday, Feb 25 Haanja	Middle
Sunday, Feb 25 Rõuge	Banquet

THURSDAY 22/2

09.00-21.00	Event office is open – accreditation	Event centre Kubija Hotel
09.00-13.00	Model Event	Arena Haanja

FRIDAY 23/2

07.30-09.00	Event office is open	Event centre Kubija Hotel
09.00-14.30	Event office is open	Arena Haanja
17.00-21.00	Event office is open	Event centre Kubija Hotel
10.30	First start WSOCup - sprint W	Arena Haanja
11.00	First start WSOCup - sprint M	Arena Haanja
13.00	First start First start NJM, WMSOC, Open Ski-o	Arena Haanja
12.30	Prize giving ceremony WSOCup, U23	Arena Haanja
14.15	Prize giving ceremony NJM, WMSOC, Open Ski-o	Arena Haanja

SATURDAY 24/2

07.30-08.30	Event office is open	Event centre Kubija Hotel
09.00-16.00	Event office is open	Arena Haanja
18.00-21.00	Event office is open	Event centre Kubija Hotel
10.30	First start WSOCup - pursuit M	Arena Haanja
11.45	First start WSOCup - pursuit W	Arena Haanja
13.00	First start NJM, WMSOC, Open Ski-o	Arena Haanja
13.05	Prize giving ceremony WSOCup, U23	Arena Haanja
14.45	Prize giving ceremony NJM, WMSOC, Open Ski-o	Arena Haanja

SUNDAY 25/2

07.30-08.30	Event office is open	Event centre Kubija Hotel
09.00-15.00	Event office is open	Arena Haanja
16.00-18.00	Event office is open	Event centre Kubija Hotel
10.00	First start WSOcup - middle W	Arena Haanja
10.45	First start WSOcup - middle M	Arena Haanja
13.30	First start First start NJM, WMSOC, Open Ski-o	Arena Haanja
13.40	Prize giving ceremony WSOcup, U23	Arena Haanja
14.30	Prize giving ceremony NJM, WMSOC, Open Ski-o	Arena Haanja
19.00	Banquet	Rõuge

EVENT PLACE

Exact location of each competition area and finish area

- The event centre will be at Kubija Hotel, Võru, Estonia
57.81848632479836, 27.007571701796213 <https://www.kubija.ee>
- The event arena will be in Haanja, Võrumaa, Estonia
- 57.72274683221958, 27.048729537957858 <https://haanjasport.ee/>



Exact arena layout for every day will be published in Eventor.

SUMMARY OF ENTRIES

Country	Sum of competitors
Estonia	40
Finland	32
Latvia	23
Lithuania	19
Germany	5
Switzerland	5
Austria	4
Sweden	4
Norway	3
Poland	2
Ukraine	2
Czechia	1
United States	1

PARTICIPATION

Competitors participate at their own risk. Insurance against accidents must be the responsibility of their Federation or themselves, according to national regulations.

MODEL EVENT

Model Event maps are available in Event Center in Kubija.

TRAINING OPORTUNITES

Artificial snow ski track close to Kubija hotel is open for training. It's around 4 km long loop starting from Kubija spordibaas. Most part of the tracks are good but there are some places with icy conditions, but still skiable.

WAXING

The organisers will set up a tent/shelter and provide an electricity connection.

2 ski wax table's will be brought under the tent for use.

No other equipment will be provided by the organisers.

DROP OFF / PARKING

Parking is available at the arena. Please follow the signs and instructions of the parking marshals. The distance from the parking to the competition arena is maximum 300 m. Parking is free of charge.

Please follow the signs and instructions from the parking marshals to avoid slowing the flow of traffic.

CAFETERIA

Cafeteria will be open in the Arena Haanja 23.02, 24.02 and 25.02.

Hot meals, pies, cakes, snacks, hot and cold drinks will be available.

TOILETS

Toilets are available at the arena and in Event office building.

FIRST AID

First aid service and transport of injured athletes from the forest is available. Contact the event doctor at the competition office +372 5060047. In case of emergency. Emergency number in Estonia is 112.

COMPETITION INFORMATION

TERRAIN

The competition terrain is located on the territory of Haanja Nature Park in the middle of Haanja upland featuring several medium size hills with steep slopes, relatively flat grasslands, cultivated fields and marshes between hills. Height difference in the competition terrain is 70 meters, but most "large" hills rarely exceed 20-30 meters of vertical climbing on one slope.

Haanja sports center usually keeps open 1, 2, 3, 5 and 42km ski tracks during the winter time. In past times, several international ski-orienteing competitions, national cross-country skiing and biathlon championships have taken place there and the tracks are considered to be with the best snow coverage in Estonia.

Spruce is the dominant tree species in the area, but when mixed with alder, aspen, birch and hazel, the natural vegetation ranges from "white" to thick. European spruce bark beetle and strong storms that followed them have made sure that a significant number of trees are placed on the ground horizontally. There are several recently felled areas, where passability ranges from open to overgrown.

MAPS

Maps size all days **A4** (297x210mm)

Contour interval all days **5m**

Scale sprint **1:5000**

Scale long **1:10000** and **1:7500**. See classes table.

Scale middle **1:7500**

Material waterproof. Fasteners can be pressed through.

- **Brown asphalt roads** that could provide a dangerous route choice are forbidden to use and covered with a zig-zag symbol. In case there is a ski-track next to the road, zig-zag symbol is slightly moved to one side. Openings around allowed crossings are wide.

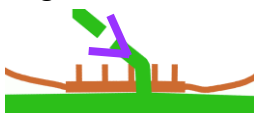


- In sprint, very wide track symbol has been enlarged by 25% in some places to highlight ultra-wide places of the track. In these places the track is about 8m wide, which corresponds to the 1,6mm enlarged symbol with on the map. Comparison of very and ultra wide track below.

- **All lakes** are allowed to be used. At the moment (21.02) the snow on lakes is very thin and it is possible to ski freely on lakes. Snowmobile tracks may be hard to see on lakes.
- There is a recently felled area close to the finish, where a harvester was working on 20.02. Remaining piles of freshly felled bushes dot the area. Ski tracks go around the area almost touching and intersecting with harvester tracks. The following symbol is used.



- A track crosses **earth bank** in two locations on the map. Elevation difference is 4-5m, but these places are steep. WMSOC and open classes, **one way symbol** is used in one place on the map. It is **forbidden** to ski down the extremely steep grade from the wide track to the small one! About skiing up - only classes W35, M50, M55 and Open M40+ may consider taking this route choice, but it takes extra time to climb the steep section. Other classes do not need to worry about this, it is forbidden to go down and there is no sensible route for going up.



- In pursuit and middle – 180m marked route from the start line to the start triangle is omitted from the map. This is done to improve the legibility of the finish approach. On terrain, the route is clearly bordered with V-boards.

TRACKS

More than 100 km of ski trails have been prepared. Courses are ready:

	KM	Percentage
Dotted track (~0,6m)	0,15	0%
Narrow Track (~1,2m)	62,6	50%
Wide track (2-2,5m)	19	15%
Very wide track (4-8m)	33,3	27%
Black road (2,5-3m)	9	7%
	124	100%

There are two dotted narrow tracks on the map:

- 1) On a slope - this has not been prepared by a snowmobile. It is a walking track, where a trail running event crossed the terrain in January. The organizers over-walked the track to compact the snow dragging car tyres.
- 2) Next to a lake – the snow will melt by the competition day. Width of icy remains of the track are about 0,6m with green forest floor in between.

Black roads are extremely icy at the moment (21.02). It is hard to make sharp turns onto these roads and out of these roads. Be careful!

WARM UP

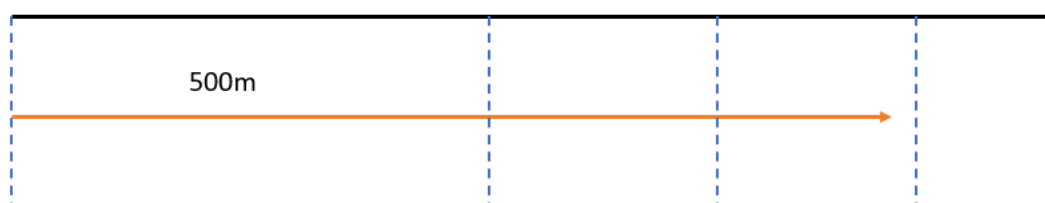
Before WMSOC, the warm-up area is used for World Cup quarantine. It is possible to enter the warm-up area after the last World Cup participant has started.

SPRINT

Course	Length (straight km)	Shortest route (skiable km)	CP
M20, M21	3,5	4,6	12
M35, M40	3,7	4,8	13
W35, M50, M55, open M40+	3,2	4,1	12
W20, W21, W40, W45, M18, M60	3,0	3,8	11
W50, W55, M16, M18, M65, open W40+	2,6	3,4	11
W18, W60, M70, M75	2,2	2,9	10
W16, W65, W70, M14, M80	2,1	2,8	9
W14, W80, M85	1,7	2,2	8

- Pre-start **8 minutes**. See location on the arena map. Distance from pre-start to start is 400 meters. It is likely that skis have to be taken off at road crossings.
- All first controls are 50-60 meters from each other. You will likely see several controls at the same time. Take the right one!
- Part of the terrain has been ridden with recreational snowmobiles a few weeks ago. Most large tracks will be used for competition and have been groomed and mapped. Few tracks have been partially covered with snow and are not mapped.

START PROCEDURE



-8 min

-2 min

-1 min

-30 sec

Prestart

SIAC clear/check

LONG

Course	Length (straight km)	Shortest route (skiable km)	CP	Map scale	Two-sided map
--------	-------------------------	-----------------------------------	----	-----------	------------------

M20, M21	12,7	17,1	21	1:10000	map flip
W20, W21, M35, M40	11,1	15,0	19	1:10000	map flip
M18, M45	9,9	13,4	17	1:10000	map flip
W35, M50, M55, open M40+	9,0	12,1	15	1:7500	map flip
W18, W40, W45, M60	8,1	10,9	15	1:10000	no
W50, W55, M16, M65, open W40+	6,9	9,2	16	1:7500	no
W60, M70, M75	5,3	7,1	11	1:7500	no
W16, W65, W70, M14, M80	4,4	6,0	10	1:7500	no
W14, W80, M85	3,4	4,5	8	1:7500	no

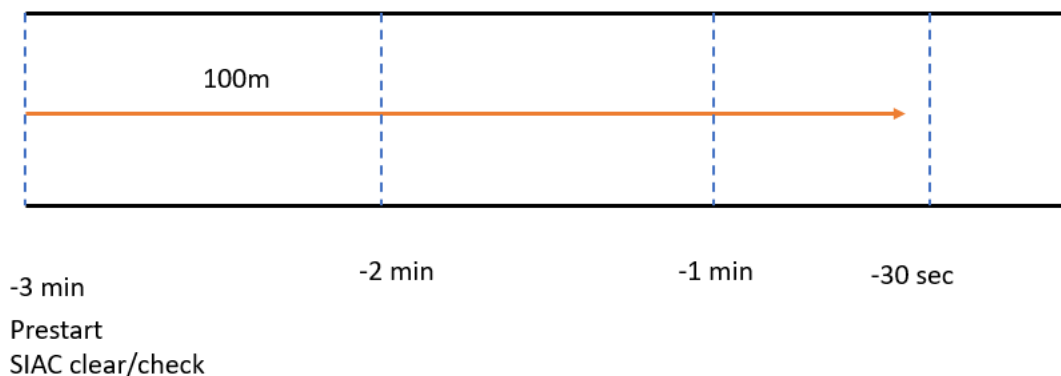
- Pre-start **3 minutes**.
- There is a forbidden area over the arena. It is allowed to pass the forbidden area during marked routes out of start and to finish. It is forbidden to use these routes during other parts of the course!
- Several controls are 50-70 meters from each other. Take care!
- The following classes will use a double-sided map on long distance: W35, M35, M40, M45, M50, M55, open W20, open W21, open M18, open M20, open M21, open M40+. The first side is indicated with large text **MAP 1** and the second side **MAP 2**. The competitors will turn the map at the control in the forest. Map 2 will start with a combined control-triangle symbol, control numbers will continue.



- There one a refreshment point on the terrain, which is not located at a CP. The location is indicated by the drinking cup symbol. Most courses will pass nearby at around 70% of the distance, some courses may pass it twice.



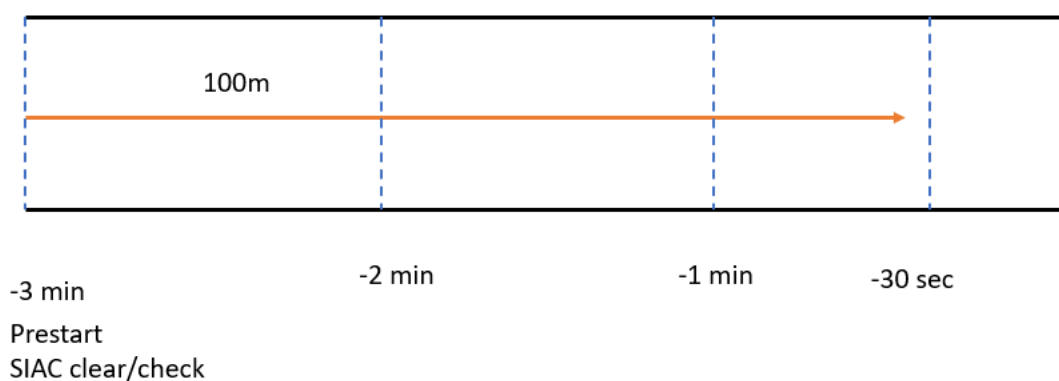
- W40, W45, M60, open W18 – the first control is almost touching the start triangle, followed by a long leg. When you take the map, be very careful, the first control may be really close!



MIDDLE

Course	Length (straight km)	Shortest route (skiable km)	CP
M35, M40	7,3	10,3	18
M20, M21, M45	6,4	8,9	15
W20, W21, W35, M50, M55, open M40+	5,8	8,1	13
W40, W45, M18, M60	5,0	7,0	12
W18, W50, W55, M16, M65, open W40+	4,7	6,6	11
W60, M70, M75	3,8	5,3	11
W16, W65, W70, M14, M80	3,1	4,4	11
W14, W80, M85	2,4	3,4	8

- Pre-start **3 minutes**.
- There will be a few dotted tracks on the map, which have been prepared by a snowmobile, but where the snow has melted.



NUMBER BIBS

Disposable waterproof number bibs will be used. 4 safety pins per athlete are included in the materials. NB! Paper number bib should be placed on right leg. The number bibs may not be folded or cut.

QUARANTINE

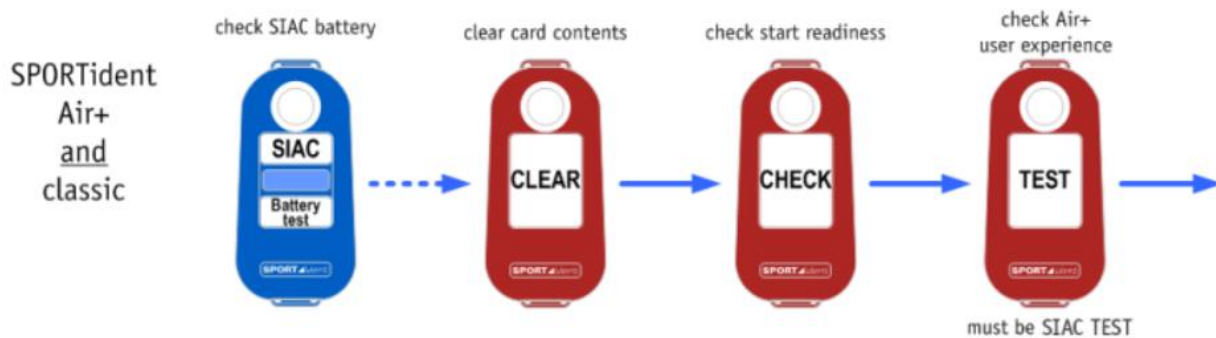
There are no quarantine for WMSOC competitors. Quarantine area can be used after WSOCup last competitor has started ca 12.00 on 23.02 and 24.02; ca 12.45 on 25.02. After this time, Ski Open, Nordic Junior Meeting and WMSOC competitors can enter the area for changing of clothes.

PUNCHING

WMSOC 2024 will use SportIdent Air+ as punching system.

SIAC cards are distributed upon accreditation.

Competitors should have one SIAC cards attached to either their left or right hand or finger. We do not recommend SIAC card to be placed on the same hand as the GPS watch. There will be SIAC card test in the start.



Punching is touch-free, you are not allowed to touch the control equipment. Control equipment is on a fiber pole as shown on the photo below. The SIAC card needs to be within 30..50 cm of the punching unit for it to be registered.

Controls are equipped with one station operating in AIR mode - this is the uppermost station on the pole. In addition, lower on the pole there is a normal SI-station as a back-up station, which must be used when the AIR station or SIAC card is not functioning. For the back-up punch, the SI card must be inserted into the station hole.



The SIAC card will flash and give an audible "beep" when a punch is registered. The card has a 5 second flash. If SIAC card nor flashes or beeps, the competitor must punch at the other punching unit at the control point.

Example controls will be available at the Model Event.

After finish, data from the SIAC should be downloaded. If punches are missing athlete should hand SIAC for further processing, "red exit".

FINISH

Taping and track markings in the snow will show the way from the last control to the finish. There will be no punching at the finish line as the time will be registered automatically via a loop antenna as the SIACs passes the line. After crossing the finish line, you will be directed to download of data from your SIAC.

RESULTS

Follow the live results on the screen at the arena and at LIVE Orienteering [OTSE Start - Osport.ee](https://otse.start-osport.ee)

Official results will be published on IOF Eventor and <https://wcup2024.peko.ee/wmsoc2024/>

COMPLAINTS AND PROTESTS

Complaints should be submitted in writing to the Competition Office at the latest 30 minutes after the last finisher in the class it concerns. Complaints can only be submitted by a team official or a competitor. The event director will deal with the complaint and take a decision on the question. The person making the

complaint will be informed of the decision. Complaints may be made free of charge. Should the person making the complaint not be satisfied with the decision a protest may be submitted. Protests should be submitted in writing within 15 minutes of the complainant receiving notice of the original decision. Protests are dealt with by the jury.

The fee for a protest is 50€. This fee will be repaid should the jury approve the protest

JURY

Erik Adenstedt (Austria)

Carl Fey (United States)

Juerg Hellmueller (Switzerland)

ANTI DOPING

Doping is strictly forbidden, and the Event Organization is dedicated to supporting the AntiDoping Authorities in their work. Doping controls may be carried out any time during the event in accordance with the procedures described in the WADA International Standard of Testing and Investigations. The IOF Anti-Doping Rules and the World Anti-Doping Code apply. Athletes must have valid personal identification available at the finish.

BAN ON FLUORIDES

It is prohibited to use fluorinated waxes in all distances during WMSOC. Each athlete must sign and submit the IOF Declaration of Conformity before the competition starts. Completed declarations must be brought to the event center before the competition or sent by email to WMSOC2024@peko.ee

Link to [Declaration of Conformity](#).

Additional information <https://orienteering.sport/skio/fag-ban-of-fluorinated-waxes-in-skio/>.

FORBIDDEN AREAS

All access to embargoed areas, ski tracks and downhill slopes in Haanja is strictly forbidden. Exceptions are ski test area, model event map (except during the races!), warm-up tracks, tracks to start.

Additional Information

Ski Orienteering Worldcup Round 2 2024 will be organized simultaneously

23-25.02.2024 Link to competition info on the webpage: <https://wcup2024.peko.ee/>