

EUROPEAN ORIENTEERING CHAMPIONSHIPS 2016
& EUROPEAN TRAIL ORIENTEERING CHAMPIONSHIPS 2016
21ST - 28TH MAY 2016



Bulletin 2
July 2015

Content

General information:

1. EOC schedule & ETOC schedule
2. Travel opportunities
3. Visas
4. Transportation
5. Terrain, climate, hazards
6. Locations
7. Embargoed areas
8. Training possibilities
9. Entries
10. Accommodation
11. Advisors & Controllers
12. Contact
13. Organizers

EOC:

Classes and participation restrictions for EOC Events

ETOC:

Classes and participation restrictions for ETOC Events

Events for spectators



photo by Petr Hostaš / petrhostas.com

1. EOC & ETOC schedule

Day		EOC	ETOC	Public events
Thursday 19 th May	morning	arrival <i>Lázně Jeseník</i>		
	afternoon	model long, middle <i>Bílá Voda, Černá voda</i>		
Friday 20 th May	morning	model long, middle <i>Bílá Voda, Černá voda</i>		
Saturday 21 th May	morning	model sprint <i>Jeseník</i>	arrival <i>Lázně Jeseník</i>	regional event <i>Bruntál</i>
	afternoon	sprint relay <i>Bruntál</i>		
Sunday 22 th May	morning	sprint Q <i>Jeseník</i>	opening ceremony <i>Lázně Jeseník</i>	
	afternoon	sprint F <i>Lázně Jeseník</i>		
	evening	opening ceremony, prize giving ceremony sprint & sprint relay <i>Lázně Jeseník</i>		
Monday 23 th May	morning	long Q <i>Bílá Voda</i>		
	afternoon		model TempO + Pre-O Relay <i>Jeseník</i>	
Thursday 24 th May	morning	long F <i>Bílá Voda</i>	TempO Q <i>Zlaté Hory - Bohéma</i>	
	afternoon		TempO F <i>Lázně Jeseník</i>	
	evening	prize giving ceremony long, team leaders' banquet <i>Lázně Jeseník</i>	team leaders' banquet <i>Lázně Jeseník</i>	
Wednesday 25 th May	afternoon		Pre-O relay <i>Lázně Jeseník</i>	Pre-O public race <i>Lázně Jeseník</i>
	evening		prize giving ceremony TempO & Pre-O relay <i>Lázně Jeseník</i>	
Thursday 26 th May	afternoon	middle Q <i>Dolní Údolí</i>	model Pre-O <i>Vápenná</i>	
Friday 27 th May	morning		Pre-O 1 <i>Kobylá</i>	
	afternoon	middle F <i>Stará Červená voda</i>		
	evening	prize giving ceremony middle, V.I.P. banquet <i>Lázně Jeseník</i>	banquet V.I.P. <i>Lázně Jeseník</i>	
Saturday 28 th May	morning		Pre-O 2 <i>Vápenná</i>	Czech Cup - middle <i>Stará Červená Voda</i>
	afternoon	relay, prize giving ceremony relay, closing ceremony <i>Stará Červená Voda</i>	prize giving Pre-O, closing ceremony <i>Stará Červená Voda</i>	
	evening	banquet <i>Lázně Jeseník</i>	banquet <i>Lázně Jeseník</i>	
Sunday 29 th May	morning	departure <i>Lázně Jeseník</i>	departure <i>Lázně Jeseník</i>	Czech Cup - long <i>Stará Červená Voda</i>

2. Travel opportunities

Event center: Lázně Jeseník (Jeseník spa) 3 kilometers from Jeseník

Airport Katowice - Jeseník	180 km	3:00 h by car 5:00 h by train
Airport Brno - Jeseník	180 km	2:20 h by car 4:00 h by train
Airport Praha - Jeseník	280 km	4:00 h by car 4:30 h by train
Airport Bratislava - Jeseník	320 km	4:10 h by car 5:00 h by train
Airport Wien - Jeseník	360 km	4:40 h by car 6:15 h by train

3. Visas

According to the current regulations citizens of some countries must obtain a visa in order to enter Czech Republic. Please note that conditions of entry to Czech Republic can change and all EOC participants are advised to keep up to date of the current situation. Please visit <http://www.mzv.cz/jnp/en/index.html>

4. Transportation

It is suggested that competitors and officials use their own cars. The organizer is not providing official transportation, but will support teams that rely on public transport in finding suitable ways to reach the training and event locations.

5. Climate & hazards

Average temperature: 15 °C

Probability of rain: moderate

There is no special clothing required.

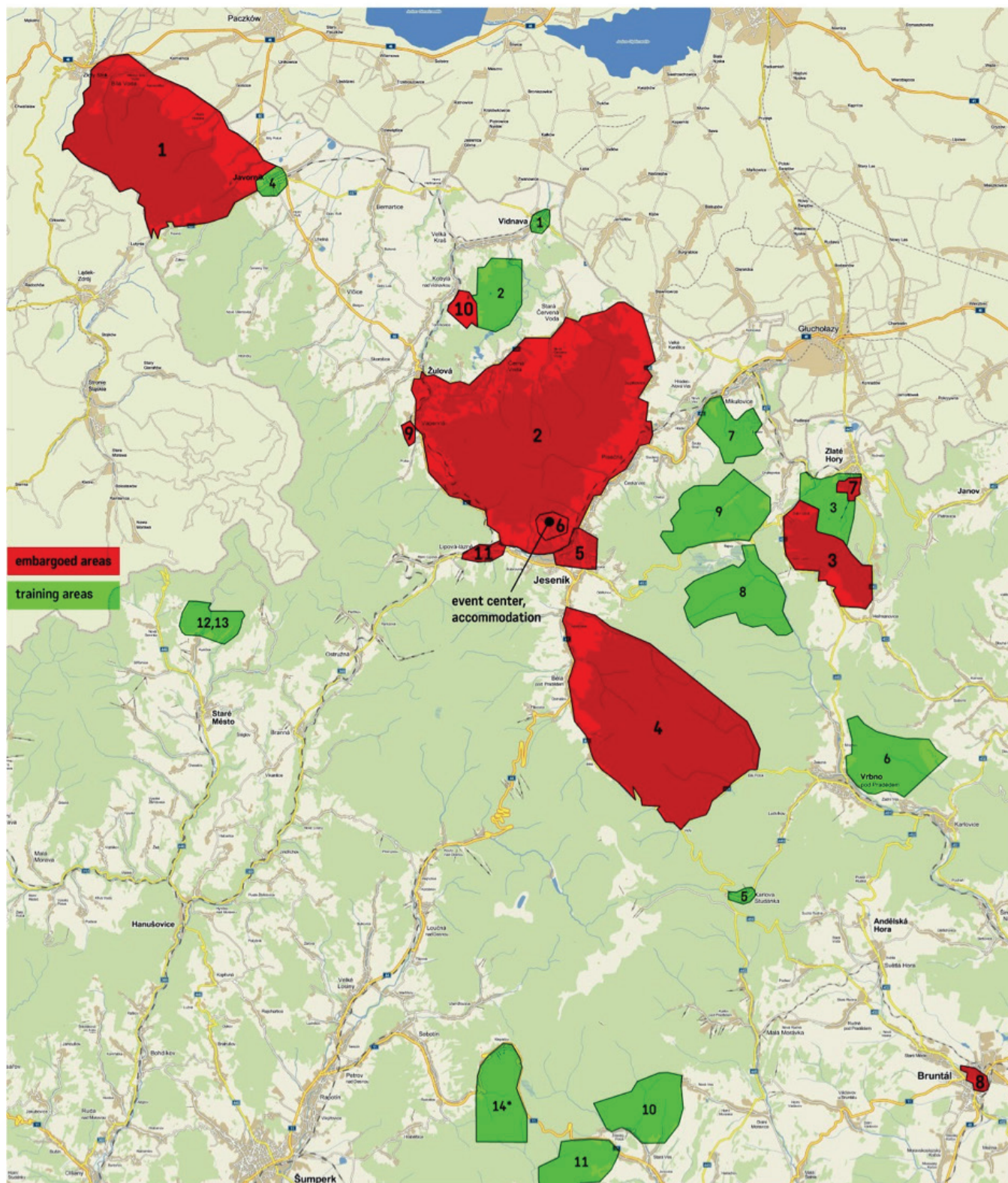
No dangerous snakes or animals live in this region.

Beware of ticks. It can transmit borreliosis and encephalitis. It is recommended to see a doctor after removing a tick.

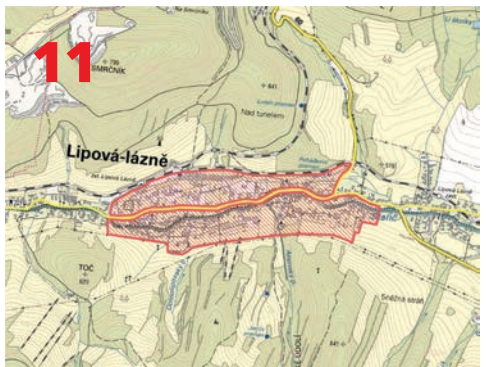
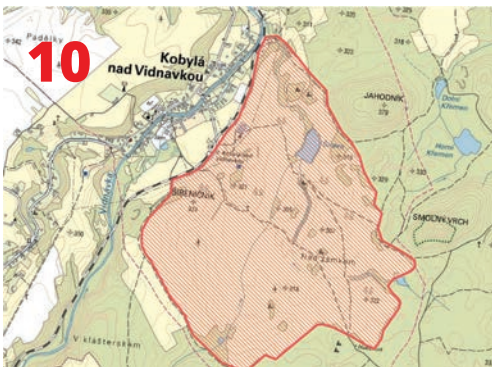
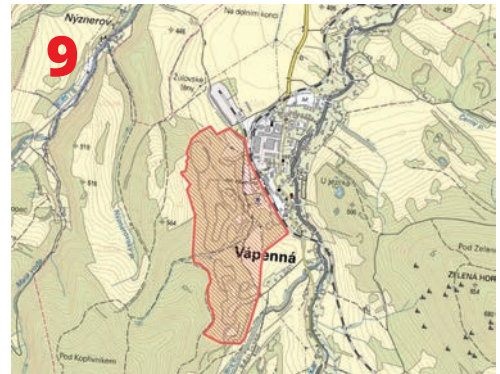
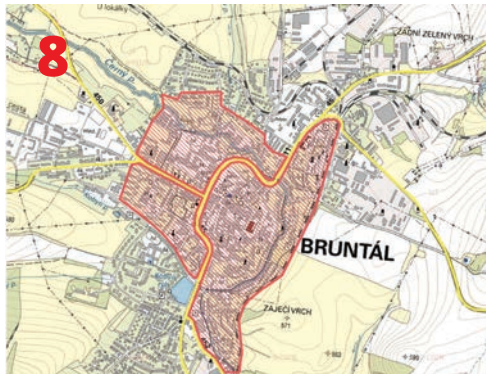
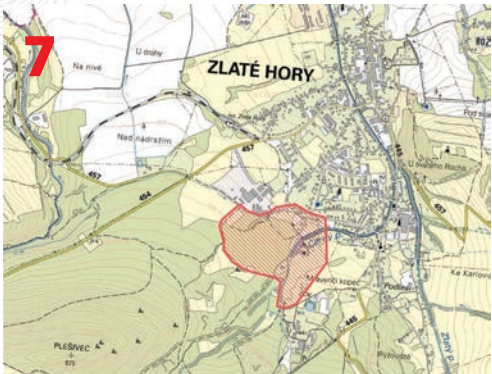
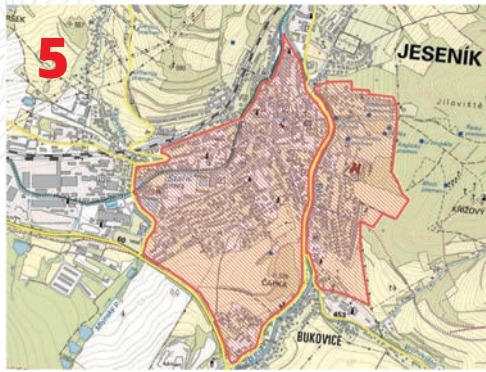
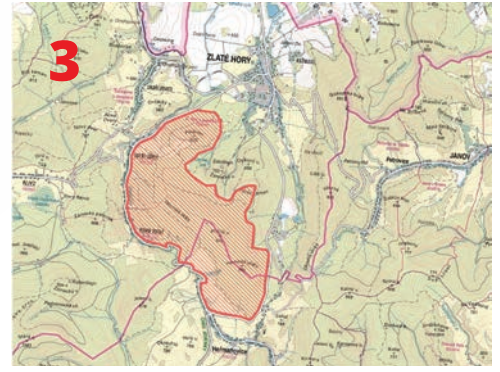
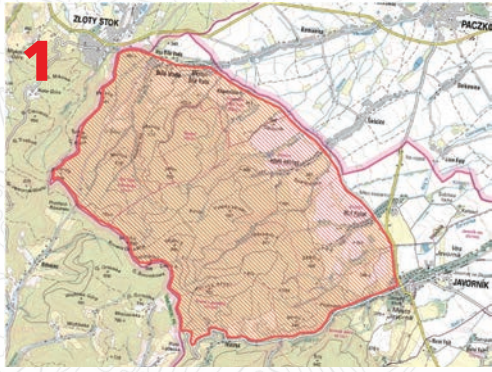
6. Locations

With reference to the IOF Competition Rules (article 26.6), the areas indicated on the accompanying maps and street plans are embargoed. Potential team members, leaders and others, whose knowledge of the terrain could influence results of the EOC competition, are prohibited from entering these areas. Living in an accommodation and visiting the event center in Lázně Jeseník, embargoed area 6, is allowed, however, consulting plans or maps, and training with or without map in the embargoed area is prohibited until 22nd May for EOC participants (until after Sprint F) and until 25th May for ETOC participants (until after Pre-O Relay).

Embargoed and training areas for European Orienteering Championships 2016



7. Embargoed areas



Embargoed areas (see map):

1	Javorník - road 457 direction to Lutynia - state border CZ/PL - Złoty Stok - City of Bílá Voda - state border CZ/PL - Bílý Potok - Javorník
2	Jeseník - Lipová-lázně - Vápenná - Žulová - Černá Voda - Stará Červená Voda - Velké Kunětice - Supíkovice - Písečná - Jeseník
3	Horní Údolí - Dolní Údolí - northern and northeastern hillside of Příčná hora - Mariahilf - Heřmanovice - Horní Údolí
4	Bílý Potok - Vidly - Bělá - Domašov - Bělá pod Pradědem - Adolfovice - valley of Šumný potok (creek), valley of Bílý potok (creek), Bílý Potok
5	city of Jeseník
6	Lázně Jeseník (Jeseník spa) - till 25th May
7	map "Snow Calamity" (year 2013)
8	city of Bruntál
9	quarry in Vápenná (SW from the village)
10	Kobylá nad Vidnavkou (meadows between Kobylá nad Vidnavkou and peak Smolný vrch)
11	village of Lipová-Lázně

8. Training possibilities *(see general map under 6. Locations)*

1	Vidnava s	1:4 000	2008
2	Vidnava e5	1:10 000	2008
3	Lysý vrch	1:10 000	2013
4*	ECTO 2015 Javorník	1:4 000	2015 after 2015/9/20
5	Karlova Studánka	1:4 000	2013
6	Sokolí skály	1:15 000	2009
7	Strážisko	1:15 000	2013
8	Ruský hřbitov	1:15 000	2004
9	Chlapecké kameny	1:15 000	2013
10	U škaredé jedle	1:15 000	2012
11	Cínváz	1:15 000	2010
12	Kunčická hora	1:10 000	2013
13	Kuní vrch	1:10 000	2013
14*	Czech long championships	1:15 000	2015 after 2015/9/28

9. Entries

The entry form will be available on EOC 2016 website from October 1st 2015.
This form must be used. Following information is obligatory:

the number of competitors of each gender (each ability - Para/Open),
the number of relay teams,
the number of officials,

team manager's name, address, e-mail address, phone/fax numbers.
There will be an optional field for a request for public transport managed by
organiser.

The final entries with the names of competitors and officials must be sent to
the organisers (see contact information) no later than April 9th 2016.

Entry fee:

before January 31st (add maximum M, W, officials)

Accreditation for athletes EOC	2.800,- CZK
long distance Q+F (per competitor)	2.400,- CZK
Middle distance Q+F (per competitor)	2.400,- CZK
Sprint Q+F (per competitor)	2.400,- CZK
Relay (per team)	4.400,- CZK
Sprint relay (per team)	4.400,- CZK
Accreditation for officials (maximum officials - 5 /per team)	2.800,- CZK

Accreditation for athletes ETOC	1.800,- CZK
Pre-O Day 1+2 (per competitor)	2.800,- CZK
TempO Q+F (per competitor)	2.800,- CZK
Pre-O relay (per team)	3.500,- CZK
Accreditation for officials	1.800,- CZK

Bank address, date and account information for payments will be published
on the EOC 2016 website by 1st October 2015. Any regulations for registration
of media representatives and extra representatives of the Federations will be
published on the EOC 2016 website by 16th April 2016.

10. Accommodation

Price covers accommodation + full board / 1 person / 1 night

A - single room	1 600 CZK
A - double	1 300 CZK
B - single room	1 200 CZK
B - double	1 100 CZK
C - single room	900 CZK
C - double	800 CZK

11. Advisers & Controllers

IOF SEA EOC
IOF SEA Assistant EOC
IOF adviser ETOC
IOF SEA Assistant
National controller EOC
National controller ETOC

Konrad Becker (SUI)
Péter Molnár (HUN)
Lars Jakob Waaler (NOR)
John Kewley (GBR)
Roman Zbranek
Pavel Dudík

12. Contact

www: www.eoc2016.cz
Address: Tyršova 12, Šumperk
787 01 Czech Republic
Telefon: +420-777564377
Email: info@eoc2016.cz

13. Organizers

Český svaz orientačních sportů
Jesenické sdružení orientačních sportů



JESENICKÉ SDRUŽENÍ
ORIENTAČNÍCH SPORTŮ

Organizing committee:

chairman
vice-chairman
event director
trail responsible person
chief course planning
manager
OC secretary
chief financial officer
accommodation and catering
arenas
media

David Aleš, david.ales@eoc2016.cz
Petr Klimpl, petr.klimpl@eoc2016.cz
Lukáš König, lukas.konig@eoc2016.cz
Tomáš Leštinský, tomas.lestinsky@eoc2016.cz
Daniel Wolf, daniel.wolf@eoc2016.cz
Petr Aleš, petr.ales@eoc2016.cz
Jan Fátor, info@eoc2016.cz
Zdena Gavorová, zdena.gavorova@eoc2016.cz
Jana Kostková, jana.kostkova@eoc2016.cz
Vítězslav Khýn, vitezslav.khyn@eoc2016.cz
Jan Exner, jan.exner@eoc2016.cz,
+420604650546

*Our team is looking
forward to you!*



Classes and participation restrictions for EOC

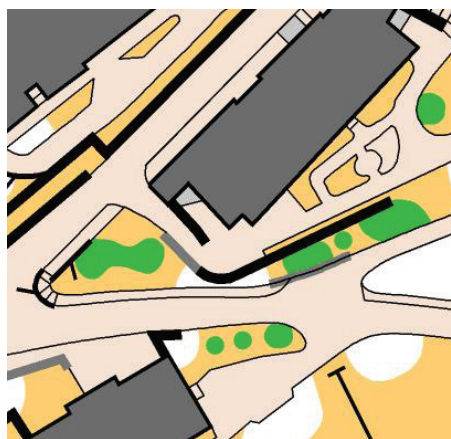
- Categories are W21 a M21. There are no age restrictions.
- Competitors representing member Federations of the IOF, defined by the International Olympic Committee as belonging to the European continent, can compete in EOC.
- Competitors representing other member Federations of the IOF can participate in EOC but will not be eligible for European titles, medals or diplomas.
- There is no limit on the number of runners and officials in a team.
- In the individual competitions a Federation may enter a maximum of 6 runners in each class. The current European Champion for the competition shall be given a wild card to enter the qualification in the next EOC in addition to the ordinary entries from his/her Federation (in which case one starting group may have three competitors from that Federation).
- In each individual competition, the competitors placed number 17 and better in each qualification race heat may run in the A-final; the remaining competitors run in the B-final.
- Competitors who start, but are not placed, in the qualification race may start before the qualified runners in the B-final but shall appear in the result list as not placed.
- In the relay a Federation may enter 2 teams each consisting of 3 competitors, but only the better-placed team will count in the prize list. Incomplete teams and teams with runners from more than one Federation are not allowed.
- Each participating Federation shall appoint a team manager to act as a contact person between the team and the organizer. It is the team manager's duty to see that the team receives all necessary information. Competitors participate at their own risk. Insurance against accidents shall be the responsibility of their Federation or themselves, according to national regulations.
- There are no other peculiarities of the event.
- A competitor may represent only one Federation during any one calendar year."
- Competitors who are representing a Federation shall have full passport-holding citizenship of the country of that Federation.
- The events of EOC 2016 are planned to be Round 2 of World Cup 2016. Details will be published on the IOF website in due course
- Punching system - SportIdent

Events

Sprint relay

Date:	Saturday, 21 st May, from 16:00 to 17:00
Location:	Location: Bruntál (50 km from event center)
Terrain:	city and park, very good runnability and visibility, altitude 550 m
Map:	scale 1 : 5 000, contour interval 2,5 m, Jan Fátor
Course planner:	Radim Hošek
Number of legs:	4
Max. number of relay teams from each federation:	1
Approx. length of legs:	2.9 km
Winning time:	60 min

Inclusion of sprint relays will be confirmed after IOF meeting on WOC 2015 in Scotland. Final verdict will appear on EOC 2016 website.

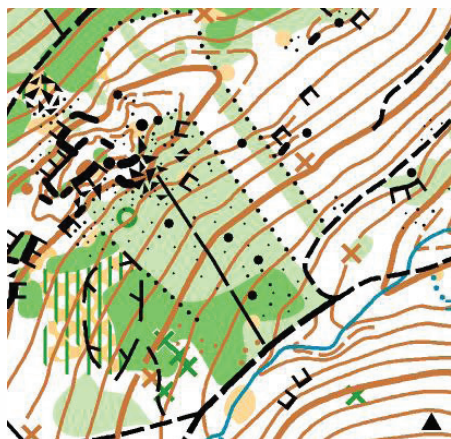
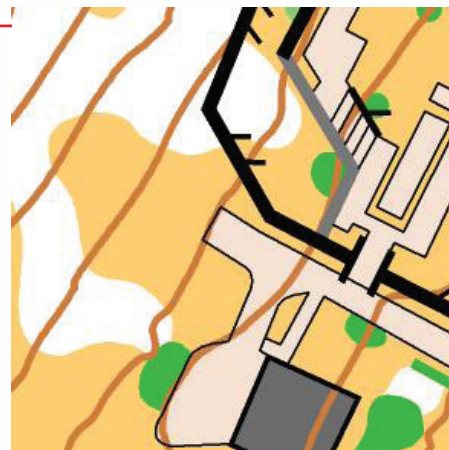


Sprint qualification

Date:	Sunday, 22 nd May, from 9:30 to 11:15
Location:	Jeseník (5 km from event center)
Terrain:	city and park, very good runnability and visibility, altitude 450 m
Map:	scale 1 : 5 000, contour interval 2,5 m, Jan Fátor
Course planner:	Daniel Wolf
Number of heats:	3 (there will be 17 qualified competitors from each heat)
Max. number of competitors (men/women) from each federation:	6 (+ European Champion)
Approx. course length for women:	2.9 km
Winning time for women:	13 min
Approx. course length for men:	2.8 km
Winning time for men:	13 min

Sprint final

Date:	Sunday, 22 nd May, from 15:45 to 17:15
Location:	Lázně Jeseník (near event center)
Terrain:	spa and spa park, hilly terrain, good runnability and visibility, altitude 550 - 650 m
Map:	scale 1 : 5 000, contour interval 2,5 m, Jan Fátor
Course planner:	Štěpán Hrobař
Approx. course length for women:	2.4 km
Winning time for women:	15 min
Approx. course length for men:	2.7 km
Winning time for men:	15 min

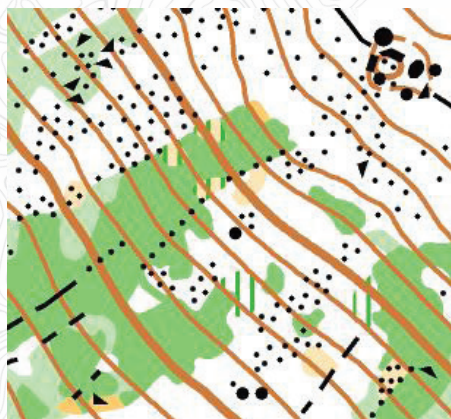
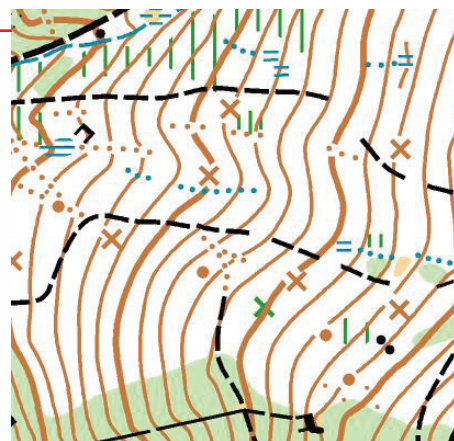


Long distance qualification

Date:	Monday, 23 rd May, from 10:00 to 14:45
Location:	Bílá Voda (40 km from event center)
Terrain:	mountains, hilly terrain, steep slopes, deep valleys, altering number of roads, mostly very good runnability, visibility varies from very good to good, altitude 350 - 800 m
Map:	scale 1 : 15 000, contour interval 5 m, Bohumil Háj
Course planner:	Filip Stárek
Number of heats:	3 (there will be 17 qualified competitors from each heat)
Max. number of competitors (men/women) from each federation:	6 (+ European Champion)
Approx. course length for women:	7.0 km
Winning time for women:	45 min
Approx. course length for men:	11.0 km
Winning time for men:	60 min

Long distance final

Date: Tuesday, 24th May, from 10:00 to 16:45
Location: Bílá Voda (40 km from event center)
Terrain: mountains, hilly terrain, steep slopes, deep valleys, altering number of roads, mostly very good runnability, visibility varies from very good to good, altitude 350 - 800 m
Map: scale 1 : 15 000, contour interval 5 m, Bohumil Háj
Course planner: Martin Janata
Number of heats: 3 (there will be 17 qualified competitors from each heat)
Approx. course length for women: 10.0 km
Winning time for women: 80 min
Approx. course length for men: 16.0 km
Winning time for men: 100 min



Middle distance qualification

Date: Thursday, 26th May, from 14:00 to 17:20
Location: Horní Údolí (25 km from event center)
Terrain: curly terrain, slope with stones, green areas, mixed visibility and runnability, medium density of paths, altitude 750 - 975 m
Map: scale 1 : 10 000, contour interval 5 m, Martin Kratochvíl
Course planner: Adam Chromý
Number of heats: 3 (there will be 17 qualified competitors from each heat)

Max. number of competitors (men/women) from each federation: 6 (+ European Champion)
Approx. course length for women: 3.5 km
Winning time for women: 25 min
Approx. course length for men: 4.5 km
Winning time for men: 25 min

Middle distance final

Date: Friday, 27th May, from 14:30 to 18:00
Location: Stará Červená Voda (25 km from event center)
Terrain: curly terrain, slope with many stones, stone grounds, watercourses, mixed visibility and runnability, medium density of paths, altitude 350 - 600 m
Map: scale 1 : 10 000, contour interval 5 m, Zdeněk Sokolář
Course planner: Jakub Weiner
Approx. course length for women: 4.5 km
Winning time for women: 35 min
Approx. course length for men: 6.0 km
Winning time for men: 35 min



Relay

Date: Saturday, 28th May, from 14:00 to 17:45
Location: Stará Červená Voda (25 km from event center)
Terrain: curly stony terrain, stone grounds, watercourses, mixed visibility and runnability, medium density of paths, altitude 350 - 600 m
Map: scale 1 : 10 000, contour interval 5 m, Zdeněk Sokolář
Course planner: Jan Pícek
Number of legs: 3
Max. number of relay teams (men/women) from each federation: 2
Approx. length of legs men/women: 7.5 / 7.0 km
Winning time men/women: 105 / 105 min

Classes and participation restrictions for ETOC

- In ETOC there are two classes. All competitors, regardless of sex, age or physical ability/disability are eligible to be entered for the ETOC Open class competition.
- Only competitors who have a permanent disability that significantly reduces their mobility are eligible to be entered for the European Championship Paralympic class competition.
- Competitors for the Paralympic class shall submit to the IOF, at least eight weeks before the competition, an eligibility form (available at www.orienteering.org) completed by a doctor.
- When approved, a certificate authenticating their Paralympic status will be issued.
- The eligibility certificate must be sent to the event organiser with the final entry form.
- There are no age restrictions.
- Competitors representing member Federations of the IOF, defined by the International Paralympic Committee as belonging to the European continent, can compete in ETOC.
- Competitors representing other member Federations of the IOF can participate in ETOC but will not be eligible for European titles, medals or diplomas.
- In the individual PreO event a Federation may enter a maximum of 6 persons in each class. In the Tempo event a Federation may enter a maximum of 8 persons. The current European Champion may be entered in their respective classes in addition to the normal maximum.
- In Relay PreO event a Federation may enter a maximum of 4 relays (2/2 Open/Para). For overall results will be considered only the best relay of each Federation.
- There are no other peculiarities of the event.

Electric Wheelchair

The maintenance of wheelchairs is the responsibility of the participants. There will be a possibility to recharge wheelchairs in the event centre and at the start quarantine.

Clothing

According to The Competition Rules for IOF Trail Orienteering Events, the choice of clothing and footwear shall be free

Events

Model TempO

Date: 23rd May, from 10:00 to 15:00
Location: Jeseník, water fort
Terrain: town park, paved paths
Map: 1:4000, E 2.5m, Jan Fátor
Course planner: Tomas Lestinsky
Course: 3 time controls, 2 Pre-O controls, length max 200m
Max. number of competitors
(Open/Para) from each
federation: unlimited

TempO Q

Date: 24th May, from 9:00 to 14:00
Location: Zlaté Hory, Bohema
Terrain: half is park with paved paths, half ancient mining area, large amount of pits and depressions. Generally good visibility.
Map: 1:4000, E 2.5m, Tomas Lestinsky
Course planner: Tomas Lestinsky
Course: 8 time controls, length max 1.5km, 2 heats
Max. number of competitors
(Open/Para) from each
federation: 8

TempO F

Date: 24th May, from 16:00 to 17:00
Location: Jeseník, lázně
Terrain: hilly park with paved paths, excellent visibility
Map: 1:4000, E 2.5m, Jan Fátor
Course planner: Tomas Lestinsky
Course: 5 time controls, length max 1km
Max. number of competitors
(Open/Para) from each
federation: the top 15 from each heat

PreO Relay

Date: 25th May, from 10:00 to 14:00
Location: Jeseník, lázně
Terrain: hilly park with paved paths, excellent visibility
Map: 1:4000, E 2.5m, Jan Fátor
Course planner: Tomas Lestinsky
Course: 10 controls each leg + 1 TempO station, length max 2km
Max. number of competitors
(Open/Para) from each
federation: 2/2 relays

Model Pre-O

Date: 26th May, from 10:00 to 15:00
Location: Vápenná
Terrain: old limestone mine, bushy, reduced visibility, unpaved road, large meadows
Map: 1:4000, E 2.5m, Tomas Lestinsky
Course planner: Tomas Lestinsky
Course: 10 controls, 2 TempO, length max 1km
Max. number of competitors
(Open/Para) from each
federation: unlimited

PreO day 1

Date: 27th May, from 10:00 to 15:00
Location: Kobylá nad Vidnávkou
Terrain: open undulated meadow, excellent visibility, no paved paths, all tracks are grassy
Map: 1:4000, E 2m, Tomas Lestinsky
Course planner: Tomas Lestinsky
Course: 20 controls (+2) + 1 time control, length max 2.5km
Max. number of competitors (Open/Para) from each federation: 6/6

PreO day 2

Date: 28th May, from 10:00 to 15:00
Location: Vápenná
Terrain: old limestone mine, bushy, reduced visibility, unpaved road
Map: 1:4000, E 2.5m, Tomas Lestinsky
Course planner: Tomas Lestinsky
Course: 26 controls (+2) + 1 time control, length max 600m
Max. number of competitors (Open/Para) from each federation: 6/6

There will be available a sufficient amount of assistants for Para competitors on Tempo Q, Tempo F, PreO Relay, PreO 1 and PreO 2. On models there will be only limited amount of assistants.

Events for spectators

Saturday	21 st May	Regional event	
Wednesday	25 th May	Pre-O public race	Lázně Jeseník
Saturday	28 th May	Czech Cup (middle)	Stará Červená Voda
Sunday	29 th May	Czech Cup (long)	Stará Červená Voda

Entries: <http://oris.orientacnisporty.cz/>



EUROPEAN ORIENTEERING CHAMPIONSHIPS 2016
& EUROPEAN TRAIL ORIENTEERING CHAMPIONSHIPS 2016
21ST - 28TH MAY 2016