

EUROPEAN ORIENTEERING CHAMPIONSHIPS 2016
& EUROPEAN TRAIL ORIENTEERING CHAMPIONSHIPS 2016
21ST - 28TH MAY 2016
WWW.EOC2016.CZ



Bulletin 1

April 2014



*Welcome
to Jeseník
2016!*

Content

1. Welcome in the Czech Republic!
2. EOC schedule
3. ETOC schedule
4. Classes and participation restrictions for EOC
5. Classes and participation restrictions for ETOC
6. Travel opportunities
7. Embargoed areas and training possibilities
8. Accommodation
9. Contact
10. Organisers

1. Welcome in the Czech Republic!

Dear Orienteering Friends,

The Czech Orienteering Federation is delighted to be organising the European Orienteering Championships (EOC) and European Trail Orienteering Championships (ETOC) 2016.

The Czech Orienteering Federation has got a lot of experiences with successful arrangements of top foot orienteering and trail orienteering events in recent years, namely the World Orienteering Championships and the World Trail Orienteering Championships 2008 in Olomouc, the Junior World Orienteering Championships 2013 in Hradec Králové, the World Cup final in 2011 in Liberec or the European Youth Orienteering Championships 2011 in Jindřichův Hradec. We strongly believe the EOC and ETOC 2016 will follow the high standards set up by the previous top orienteering and trail orienteering events organised in the Czech Republic.

We are glad to invite you to new areas where no elite orienteering race has been run before. Jeseník is a lovely spa town in the heart of the Jeseník Mountains and surrounding terrains are beautiful and challenging, exactly as they should be for such events as the EOC and ETOC are.

We are looking forward to welcome you in the Czech Republic at the EOC and ETOC 2016 as well as at training camps before these competitions.

If you have any questions, feel free contact the organisers (see contacts further in the Bulletin). We will be very happy to help you with any of your inquiries.

See you in the Czech Republic!

2. EOC schedule

Saturday	21st May 2016	model, training
Sunday	22nd May 2016	sprint Q, sprint F
Monday	23rd May 2016	long Q
Tuesday	24th May 2016	long F
Wednesday	25th May 2016	free day
Thursday	26th May 2016	middle Q
Friday	27th May 2016	middle F
Saturday	28th May 2016	relay

3. ETOC schedule

Tuesday	24th May 2016	model
Wednesday	25th May 2016	TempO Q, TempO F
Thursday	26th May 2016	free day
Friday	27th May 2016	PreO day1
Saturday	28th may 2016	PreO day2

4. Classes and participation restrictions for EOC

- Categories are W21 and M21. There are no age restrictions.
- Competitors representing member Federations of the IOF, defined by the International Olympic Committee as belonging to the European continent, can compete in EOC.
- Competitors representing other member Federations of the IOF can participate in EOC but will not be eligible for European titles, medals or diplomas.
- There is no limit on the number of runners and officials in a team.
- In the individual competitions a Federation may enter a maximum of 6 runners in each class. The current European Champion for the competition shall be given a wild card to enter the qualification in the next EOC in addition to the ordinary entries from his/her Federation (in which case one starting group may have three competitors from that Federation).
- In each individual competition, the competitors placed number 17 and better in each qualification race heat may run in the A-final; the remaining competitors run in the B-final.
- Competitors who start, but are not placed, in the qualification race may start before the qualified runners in the B-final but shall appear in the result list as not placed.
- In the relay a Federation may enter 2 teams each consisting of 3 competitors, but only the better-placed team will count in the prize list. Incomplete teams and teams with runners from more than one Federation are not allowed.
- Each participating Federation shall appoint a team manager to act as a contact person between the team and the organizer. It is the team manager's duty to see that the team receives all necessary information. Competitors participate at their own risk. Insurance against accidents shall be the responsibility of their Federation or themselves, according to national regulations.
- There are no other peculiarities of the event.

Event distance	Max number from each federation M/W	Qualification race	Number of heats in qualification	Qualified from each heat/total in final
Sprint	6 (+ E Champion)	Yes	3	17/51
Long	6 (+ E Champion)	Yes	3	17/51
Middle	6 (+ E Champion)	Yes	3	17/51
Relay	2 team 3 legs	No	—	—

5. Classes and participation restrictions for ETOC

- In ETOC there are two classes. All competitors, regardless of sex, age or physical ability/disability are eligible to be entered for the ETOC Open class competition.
- Only competitors who have a permanent disability that significantly reduces their mobility are eligible to be entered for the European Championship Paralympic class competition.
- Competitors for the Paralympic class shall submit to the IOF, at least eight weeks before the competition, an eligibility form (available at www.orienteering.org) completed by a doctor.
- When approved, a certificate authenticating their Paralympic status will be issued.
- The eligibility certificate must be sent to the event organiser with the final entry form.
- There are no age restrictions.
- Competitors representing member Federations of the IOF, defined by the International Paralympic Committee as belonging to the European continent, can compete in ETOC.
- Competitors representing other member Federations of the IOF can participate in ETOC but will not be eligible for European titles, medals or diplomas.
- In the individual PreO event a Federation may enter a maximum of 6 persons in each class. In the TempO event a Federation may enter a maximum of 8 persons. The current European Champion may be entered in their respective classes in addition to the normal maximum.
- In the PreO team competition a Federation may enter 2 teams each consisting of 3 competitors with at least one competitor from the Paralympic class. Only the better-placed team will count in the prize list.
- There are no other peculiarities of the event.

6. Transport possibilities

Event center: Lázně Jeseník (Jeseník spa)				
Airport Katowice → Jeseník	180 km	3:00 h	by car	
		5:00 h	by train	
Airport Brno → Jeseník	180 km	2:20 h	by car	
		4:00 h	by train	
Airport Praha → Jeseník	280 km	4:00 h	by car	
		4:30 h	by train	
Airport Bratislava → Jeseník	320 km	4:10 h	by car	
		5:00 h	by train	
Airport Wien → Jeseník	360 km	4:40 h	by car	
		6:15 h	by train	

7. Embargoed areas and training possibilities

Embargoed areas (see map below)

1	Javorník - road 457 direction to Lutynia - state border CZ/PL - Złoty Stok - City of Bílá Voda - state border CZ/PL - Bílý Potok - Javorník
2	Jeseník - Lipová-lázně - Vápenná - Žulová - Černá Voda - Stará Červená Voda - Velké Kunětice - Supíkovice - Písečná - Jeseník
3	Horní Údolí - Dolní Údolí - northern and northeastern hillside of Příčná hora - Mariahilf - Heřmanovice - Horní Údolí
4	Bílý Potok - Vidly - Bělá - Domašov - Bělá pod Pradědem - Adolfovice - valley of Šumný potok (creek), valley of Bílý potok (creek), Bílý Potok
5	city of Jeseník
6	Lázně Jeseník (Jeseník spa)
7	Lipová-lázně and Horní Lipová
8	town of Javorník
9	town of Mikulovice
10	city of Šumperk

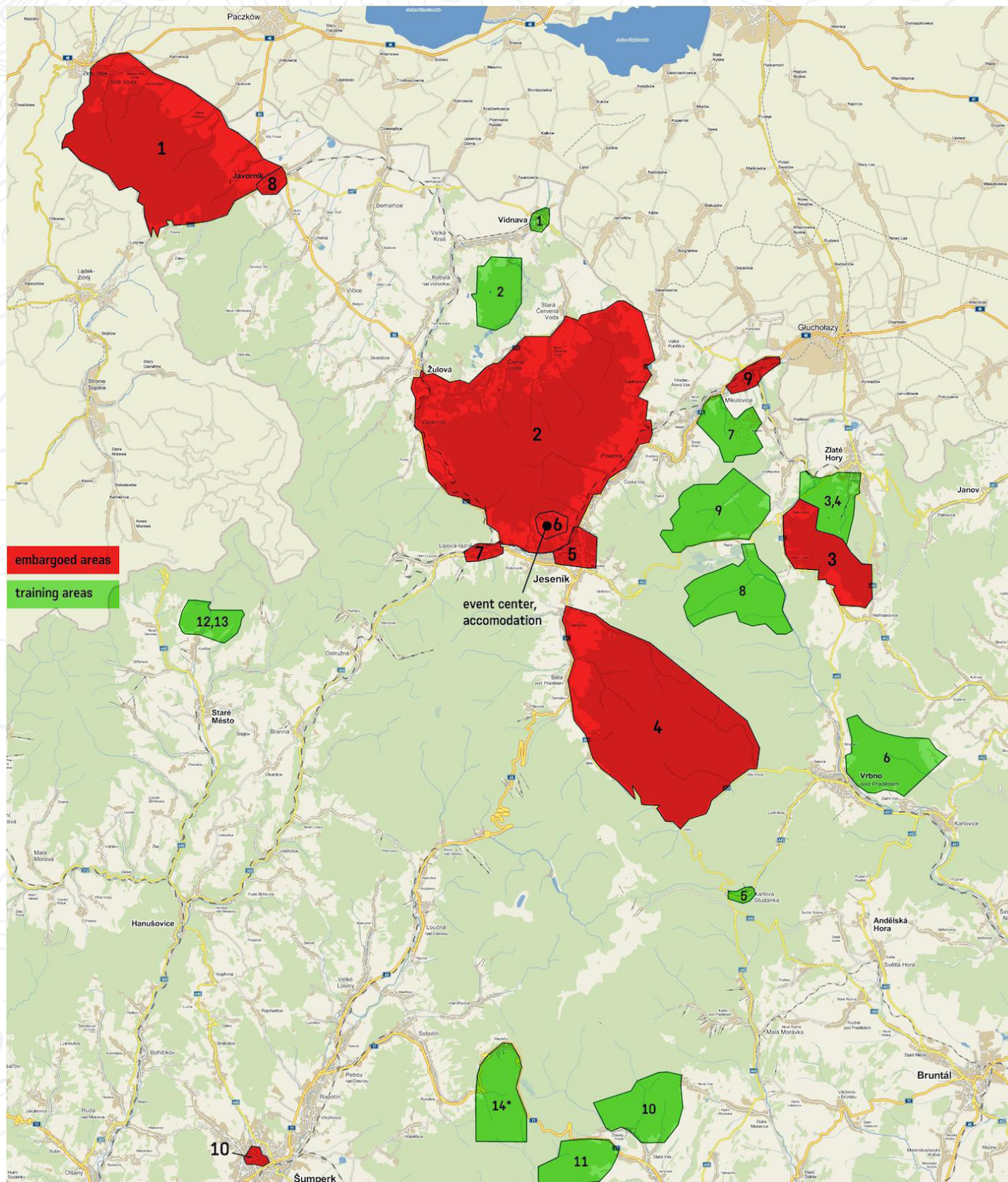
Training possibilities (see map below)

1	Vidnava s	1:4 000	2008
2	Vidnava e5	1:10 000	2008
3	Lysý vrch	1:10 000	2013
4	Snow Calamity	1:10 000	2013
5	Karlova Studánka	1:4 000	2013
6	Sokolí skály	1:15 000	2009
7	Strážisko	1:15 000	2013
8	Ruský hřbitov	1:15 000	2004
9	Chlapecké kameny	1:15 000	2013
10	U škaředé jedle	1:15 000	2012
11	Cinvíz	1:15 000	2010
12	Kunčická hora	1:10 000	2013
13	Kuní vrch	1:10 000	2013
14*	Czech long Championships	1:15 000	2015 *after 28. 9. 2015

Latest colour copies of maps of embargoed areas

Kaltenštejn 2011-4	1:10 000	2011
Kaltenštejn 10-5	1:10 000	2010
Gräfenberg	1:10 000	1996
Příčná hora	1:15 000	2007

Map: Embargoed and training areas



→ All information available on: info@eoc2016.cz

8. Accommodation

Organizers provide accommodation in event center in various classes.
Details will be published in bulletin #2.

9. Contact

www: www.eoc2016.cz
Address: Tyršova 12, Šumperk 787 01 Czech Republic
Telefon: +420-777564377
Email: info@eoc2016.cz

10. Organizers

Český svaz orientačních sportů
Jesenické sdružení orientačních sportů

Event Adviser:

IOF SEA EOC:	Konrad Becker (SUI)
IOF EA ETOC:	Lars Jakob Waaler (NOR)
National controller EOC:	Roman Zbranek
National controller ETOC:	Pavel Dudík

Organising committee:

Chairman	David Aleš	david.ales@eoc2016.cz
Vice-chairman	Petr Klimpl	petr.klimpl@eoc2016.cz
Event director	Tomáš Navrátil	tomas.navratil@eoc2016.cz
Trail responsible person	Tomáš Leštínský	tomas.lestinsky@eoc2016.cz
Manager	Petr Aleš	petr.ales@eoc2016.cz
OC secretary	Jan Fátor	info@eoc2016.cz
Accommodation and catering	Jana Kostková	jana.kostkova@eoc2016.cz
Arenas	Vítězslav Khýn	vitezslav.khyn@eoc2016.cz



*Welcome
to Jeseník
2016!*
