



August 2-9

# WMOC 2024

## TURKU FINLAND

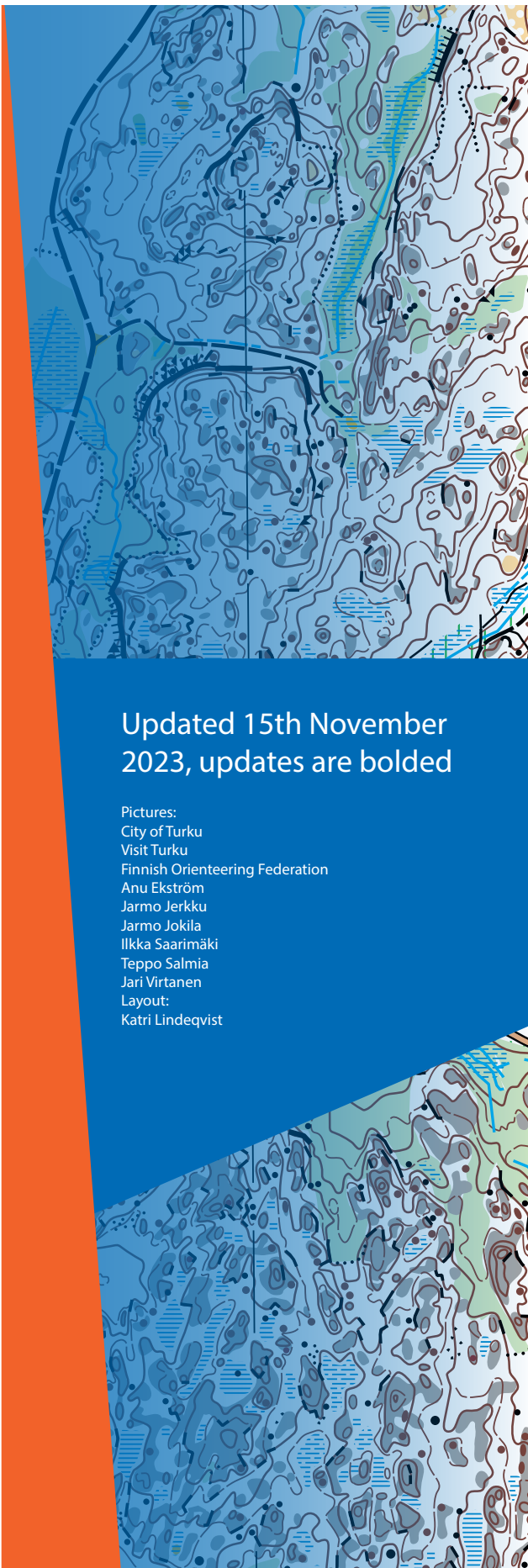
WORLD MASTERS ORIENTEERING CHAMPIONSHIPS

### BULLETIN 1



# CONTENTS

1. Organisers
2. Contact
3. IOF Advisers and Controllers
4. Editorial
5. Venue
6. Programme
7. Competitions
8. Classes and Winning times
9. Medals
10. Competition locations
11. Travel distances
12. Sprint Qualification
13. Sprint Final
14. Forest Qualification
15. Middle Final
16. Long Final
17. Punching system
18. Embargoed areas
19. Old maps
20. Antidoping
21. Clothing
22. Entries and payment
23. Entry fees
24. Changes and late entries
25. Cancellation policy
26. Training possibilities
27. Public Races
28. Child care
29. Accommodation
30. Transport
31. Parking
32. Visa
33. Insurance
34. Travel to Turku



Updated 15th November  
2023, updates are bolded

Pictures:  
City of Turku  
Visit Turku  
Finnish Orienteering Federation  
Anu Ekström  
Jarmo Jerkku  
Jarmo Jokila  
Ilkka Saarimäki  
Teppo Salmia  
Jari Virtanen  
Layout:  
Katri Lindeqvist

# 1 Organisers

Finnish Orienteering Federation

Organising clubs:

Liedon Parma

Mynämäen Suunnistajat -52

Paimion Rasti

Turun Suunnistajat

Host City of Turku

## 2 Contact

Event Secretary: Anu Ekström

Address: Ajurintie 7, 21420 Lieto, Finland

Office tel: +358 40 87 26 247

E-mail: [info@wmoc2024.fi](mailto:info@wmoc2024.fi)

Website: [wmoc2024.fi](http://wmoc2024.fi)

## 3 IOF Advisers and Controllers

IOF Senior Event Adviser: Unni Strand Karlsen (NOR)

IOF SEA Assistant: Henning Spelkavik (NOR)

National Controller: Juha Miettinen



# 4 Editorial

## *Welcome to Turku and Southwest Finland*

We are proud to organise the World Masters Orienteering Championships (WMOC) in the Turku region during August 2024. It is a great joy to host this significant event together with the Finnish Orienteering Federation and four of our local orienteering clubs.

I promise that we will do our best to make the 2024 Championships a memorable sporting event for all participants and spectators.

The WMOC has been organised since the 1980s, and the last time it took place in Finland was 2007. Back then, the competition was held in the majestic, unique nature of the Kuusamo area in Northern Finland.

This time, we welcome the competitors to Turku and the world's most beautiful archipelago. The outcroppings of Southwest Finland and the quarters of the City of Turku provide a wonderful backdrop for the World Masters Championships, and the varied programme will provide entertainment for the participants in their free time.


We expect at least 5,000 orienteers and fans of orienteering from dozens of different countries. Because Turku is quite accessible from abroad — and elsewhere in Finland — we anticipate hosting one of the largest World Masters Orienteering Championships on record.

We are looking forward to seeing you in Turku in August 2024!

Minna Arve  
*Mayor of Turku*



# 5 Venue



**Finland** is a Nordic country located near the Baltic Sea. It has some 5.5 million inhabitants and has been recognised as the happiest country in the world for several years running. Finland is also known for pure air, beautiful nature, and, of course, sauna.

The average temperature in August in Finland is optimal for masters: approximately 20 degrees with rather dry weather. Of course, the weather can change from sun to rain at a moment's notice :)

**Turku**, the oldest city of Finland, is known for its 'instagrammable' architecture, modern restaurants, and a lively riverside. The seaside City of Turku is the gateway to the Finnish Archipelago, an unparalleled natural wonder made up of 40,000 islands. Nowadays, there are about 200,000 people living in the City of Turku.

Turku is a host of many international events, such as the Paavo Nurmi Games in Athletics, the Paavo Nurmi Marathon, the Turku Challenge triathlon, the Turun Kortteliajot cycling race, and two open air rock concerts: Ruisrock and DBTL.

Between the races, participants can enjoy sightseeing, walk along the beautiful riverside of the River Aura, and enjoy the menus of many restaurants and cafés. For a relaxed atmosphere, choose one of the many restaurant ships found along the iconic riverside. Turku is bursting with museums, galleries, and beautiful parks that are worth visiting.

*For more information  
about Turku, please visit:  
[About Turku - Visitturku.fi](http://AboutTurku-Visitturku.fi)*





**The region of Turku** offers a wide variety of excellent terrain for masters. Terrains are highly runnable with only moderate hills. The coastal terrain offers an assortment of enjoyable exposed rock surface, detailed contours and rock features, and large open marshes. Both sprint events will take place in a compact area within walking distance of the City Centre.



## Event Centre

The WMOC2024 Event Centre will be located at the Kupittaa Sports Hall, 1.5 km southeast of Turku city centre, with good parking facilities close by. The same parking area will also be used for the model event and both sprint events.



## 6 Programme

	WMOC	Public races
Thu 1st August	Model event sprint, Event Centre Open	
Fri 2nd August	Model event sprint	
Sat 3rd August	Sprint Qualification, Opening Ceremony	Sprint
Sun 4th August	Sprint Final, Prize Ceremony	Sprint
Mon 5th August	Model event forest (M + L)	
Tue 6th August	Forest Qualification	Long
Wed 7th August	Middle Final, Prize Ceremony	Middle
Thu 8th August	Model event forest (M + L)	
Fri 9th August	Long Final, Prize and Closing Ceremony	Middle
Sat 10th August	Departure	

## 7 Competitions

The WMOC Sprint Distance competition consists of one Qualification race and a Final race. The WMOC Forest Distance competitions consist of one Forest Qualification race, a Middle Final race, and a Long Final race. Qualifiers for each Final will be determined in accordance with IOF Competition Rules. Details will be published in Bulletin 2 and on the WMOC 2024 website.

# 8 Classes and Winning times

According to the IOF Competitions rules:

Class	FQ	MF	LF
W35	50	30-35	70
W40	50	30-35	65
W45	45	25-30	60
W50	45	25-30	55
W55	40	25-30	50
W60	40	25-30	50
W65	40	25-30	50
W70	40	25-30	50
W75	40	25-30	50
W80	40	25-30	50
W85	40	25-30	50
W90	40	25-30	50
W95	40	25-30	50
W100	40	25-30	50
M35	50	30-35	70
M40	50	30-35	65
M45	45	25-30	60
M50	45	25-30	55
M55	40	25-30	50
M60	40	25-30	50
M65	40	25-30	50
M70	40	25-30	50
M75	40	25-30	50
M80	40	25-30	50
M85	40	25-30	50
M90	40	25-30	50
M95	40	25-30	50
M100	40	25-30	50

*SQ* Sprint Qualification  
*SF* Sprint Final  
*FQ* Forest Qualification  
*MF* Middle Final  
*LF* Long Final

For all classes of sprint races (SQ, SF), the winning time is 12-15 minutes.

Note that this is the first year that M/W winning times are equalised.

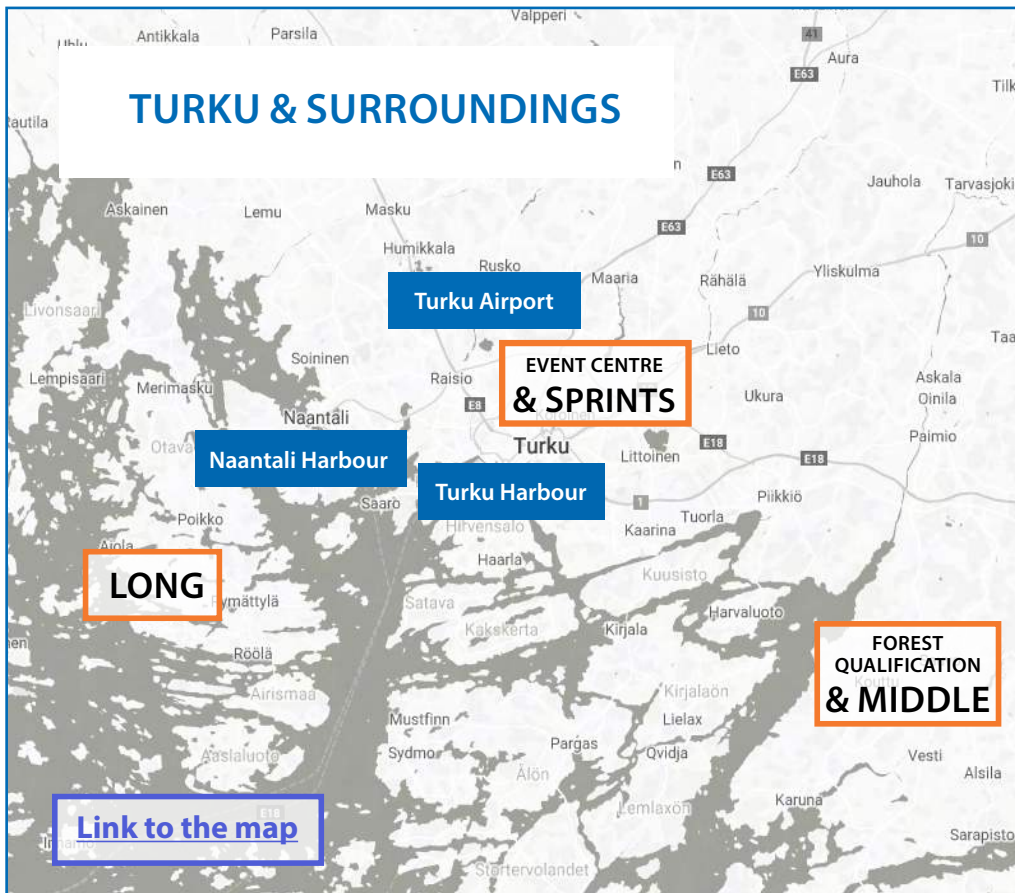
## 9 Medals

Medals will be awarded to the top three finishing competitors in each class (A-finals).





# 10 Competition locations



### ARRIVALS

**Turku Airport**

**Turku & Naantali harbours**  
Ferries daily from Stockholm, Kapellskär & Mariehamn

**Helsinki Airport**  
2 hours by car  
2,5 hours by bus/train

### SPRINT COMPETITIONS

1 km from the Event Centre Kupittaa

**FOREST QUALIFICATION & MIDDLE FINAL**  
45 km from the Event Centre Kupittaa (45 min)

**LONG FINAL**  
30 km from the Event Centre Kupittaa (40 min)

**MODEL EVENTS**  
Model Forest M & L, 20 km from the Event Centre Kupittaa, Parmaharju  
Model Sprint, 1 km from the Event Centre Kupittaa

**WALK to the SPRINTS!**  
1 km distance to the Event Centre & competitions from accommodation & parking.

## 11 Travel distances from Turku City Centre

Sprint Model	Sprint Qualification	Sprint Final	
1 km	1 km	1 km	
Forest Model	Forest Qualification	Middle Final	Long Final
20 km	45 km	45 km	30 km
Helsinki Airport	Turku Airport	Turku Harbour	Naantali
170 km	10 km	3 km	15 km

# 12 Sprint Qualification

The Sprint Qualification race will take place at the Paavo Nurmi Stadion and its surroundings. Half of the competition area consists of a sports park with moderate elevation differences, many trails, and surfaces including exposed rock grassy patches, and some forested areas. The other half consists of urban areas with private houses, public buildings, paved roads, stairs, some grassy areas, and also moderate elevation differences.

**Scale 1:3 000**

Contour interval 2 m

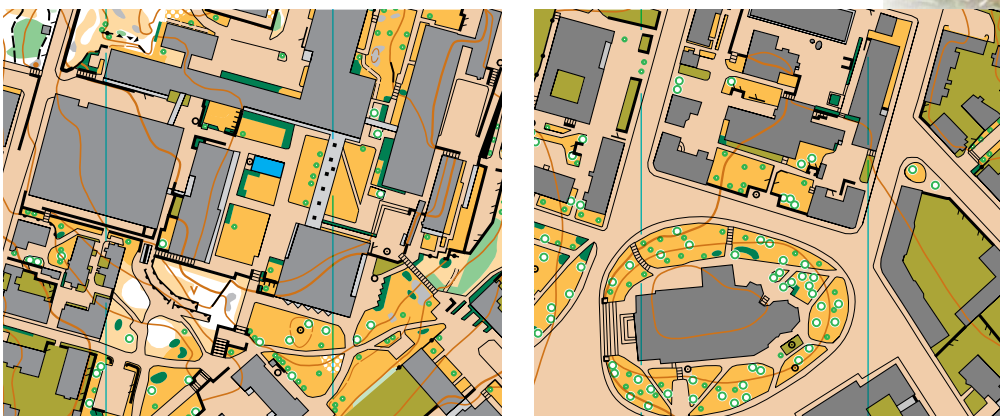


# 13 Sprint Final

The Sprint Final race will take place in the University area, with Turku Cathedral as the Arena. The competition area is urban and consists of university buildings, some private houses, paved and gravel roads, stairs, some grassy areas, and moderate elevation differences. Small, forested areas are also in the area.

**Scale 1:3 000**

Contour interval 2 m



All map samples are from old maps.



# 14 Forest Qualification

The Forest Qualification will take place in a small archipelago town called Sauvo. It will take approx. 45 minutes to drive to the Competition Centre from Turku. The bus stop and parking will be within walking distance from the Arena. There are moderate elevation differences near the Arena. Further away from Arena, rocks and cliffs are steeper but no more than 30 - 50 metres high. The terrain is fairly runnable. A national competition was held in the northern part of the terrain in 2012. The southern part of the terrain, near the Arena, has not been used for orienteering since the '80s.

Scale 1:10 000 and 1:7 500  
Contour interval 5 m



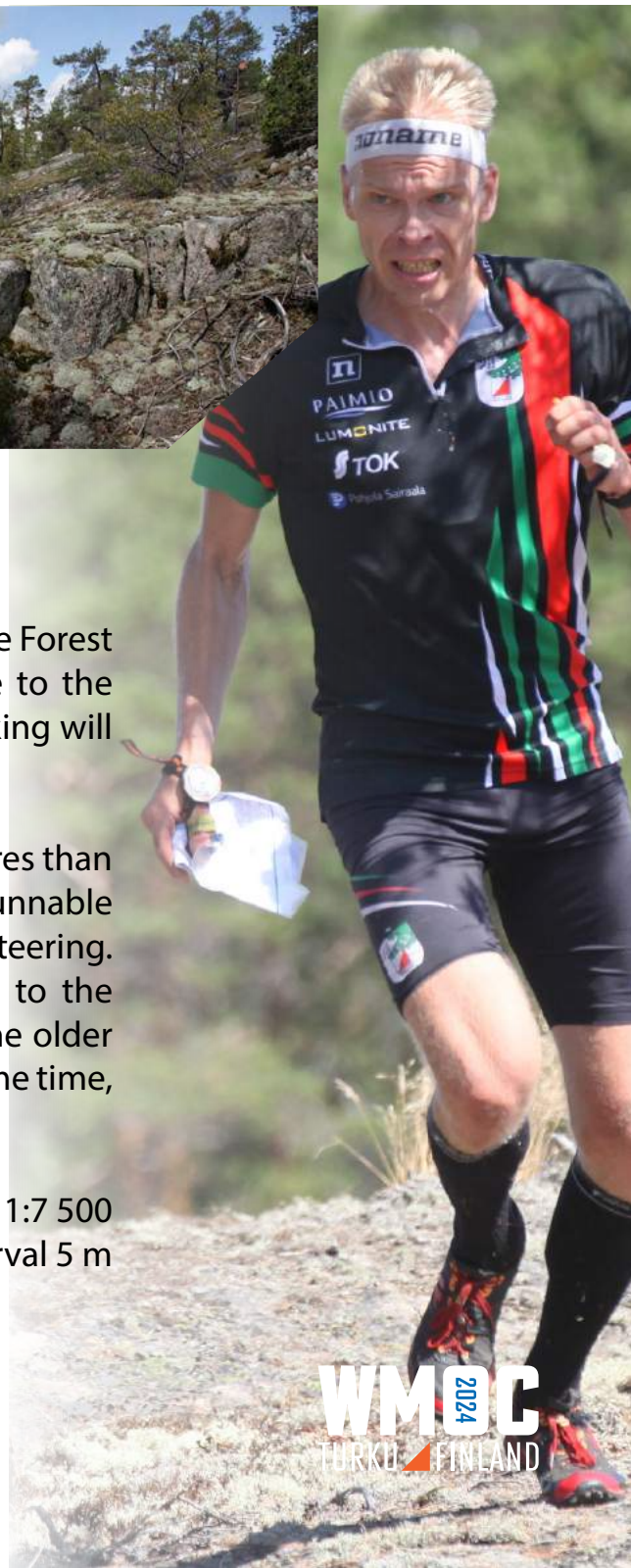
# 15 Middle Final

The Arena for the Middle Final will be the same as in the Forest Qualification. It will take approx. 45 minutes to drive to the Competition Centre from Turku. The bus stop and parking will be within walking distance from the Arena.

There will be even more contour details and rock features than in the Qualification terrain. At the same time, highly runnable terrain will offer the participants very enjoyable orienteering. There are not very many paths in this terrain. Close to the Arena, there are areas which are especially ideal for the older masters — fully demanding orienteering, but at the same time, it is very easy to move forward in the terrain.



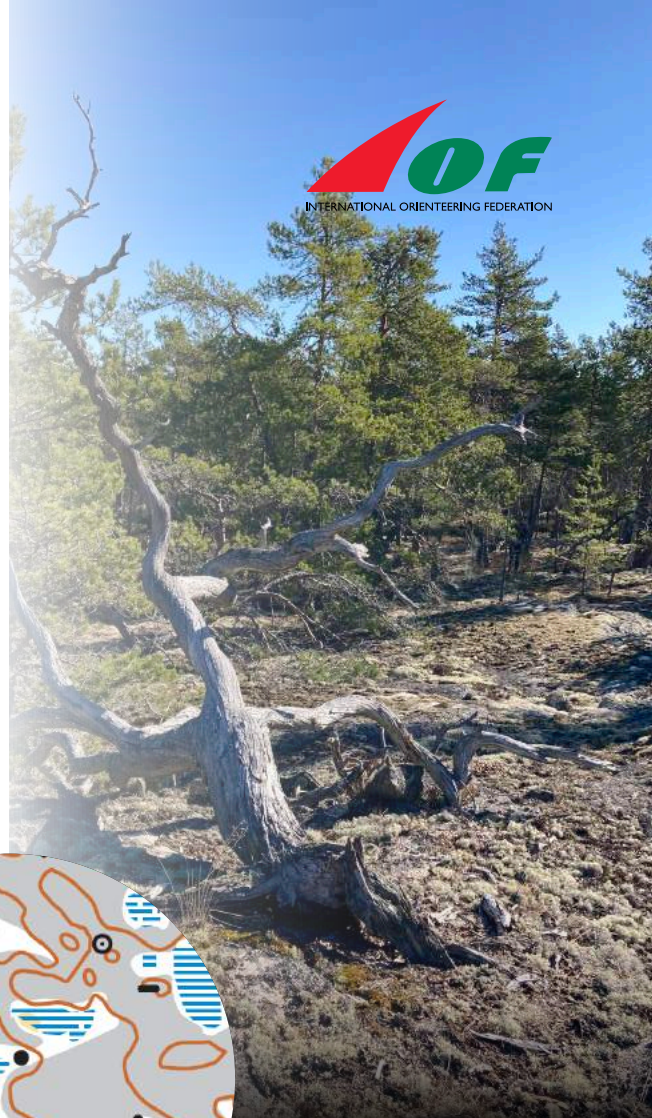
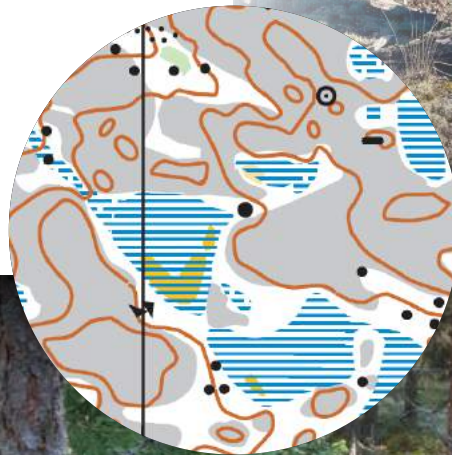
Scale 1:10 000 and 1:7 500  
Contour interval 5 m



# 16 Long Final

The Long Distance Final will take place by the Western archipelago highway about 40 minutes from Turku by car. The bus stop and parking will be within walking distance from the Arena Kurala. There will be detailed contours and rock features on the map with moderate elevation differences. The terrain is highly runnable and has not been used in competitions since 1985.

Scale 1:10 000 and 1:7 500  
Contour interval 5 m



## 17 Punching system

The EMIT card punching system will be used (no Touch Free EmitTag). EMIT cards can be hired from the organisers by choosing this option in the entry form. The hire charge for the entire week is 25 € if booked in advance. Without pre-registration, the hire charge is 10 € for one day or 35 € for the entire week.

A special limited edition of WMOC 2024 EMIT card will be on sale in January.

[Sale in EU](#)

[Sale in Norway and outside EU](#)



A Technical Model Event will take place in Event Centre Kupittaa. In the Technical Model Event you can test Emit punching.

## 18 Embargoed areas

Embargoed areas are shown at [IOF Eventor](#) and at [WMOC 2024 web page](#).

## 19 Old maps

Old maps of the competition areas are shown at [WMOC 2024 web page](#).

## 20 Antidoping

[IOF Anti-doping rules](#) apply.



## 21 Clothing

Spiked shoes are not allowed in any competition. Dobbs shoes are not allowed in the Sprint Qualification and Final. There are no other restrictions regarding clothing.

## 22 Entries and payment

Entries will be open from the 1st of August 2023 at Eventor or [wmoc2024.fi](http://wmoc2024.fi).

The default setting in Eventor is to enter both Sprint and Forest Competitions. It is also possible to enter only Sprint or only Forest Competition (by unticking the one you do not want to enter).

Possible restrictions, other than age, according to IOF decisions.

### Fair play (Rule 26.6.)

Any competitor who is so well acquainted with the terrain or the map, that the competitor would have a substantial advantage over other competitors, cannot enter the competition.

## 23 Entry fees

Deadline	Sprint only	Forest only	Both Sprint and Forest
31st of January 2024	120 €	130 €	160 €
30th of April 2024	140 €	150 €	180 €
30th of June 2024	170 €	180 €	220 €

All payments can be made via bank transfer or card payment.



## Details of WMOC 2024 account

Name of the account: WMOC 2024  
 IBAN: FI49 4309 1020 1384 57  
 BIC/SWIFT: ITELFIHH  
 Owner address: Liedon Parma, Ajurintie 7, 21420 Lieto, Finland  
 Bank: Central Bank of Savings Banks Finland Plc  
 Bank address: Teollisuuskatu 33, 00510 Helsinki, Finland

## 24 Changes and late entries

Changes made before 30th June 2024 are free of charge. Afterwards, the fee for a change is 10 €. After 30th June 2024, **late entries are not possible**.

## 25 Cancellation policy

### **Cancellation before 30th of April 2024**

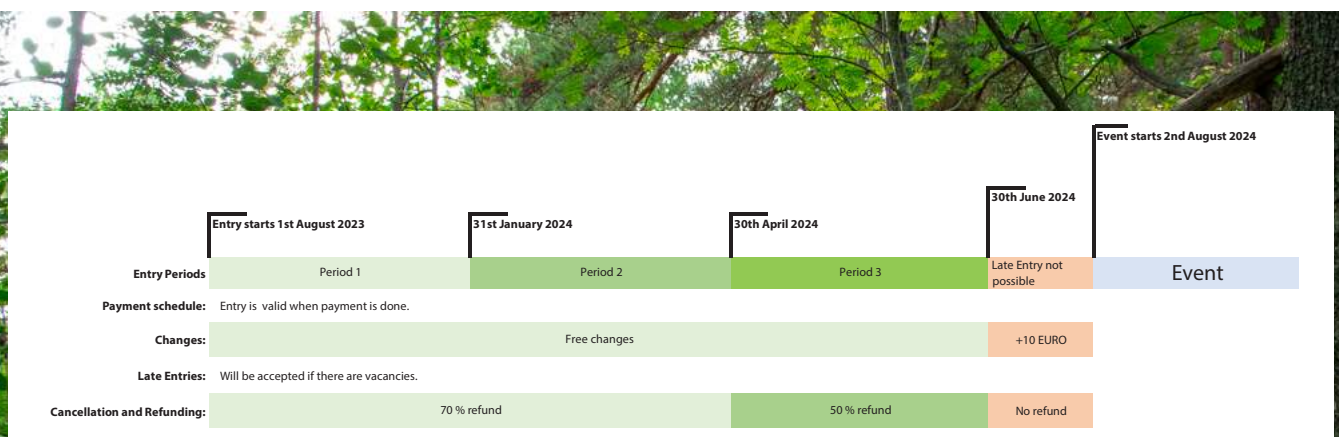
70% refund. A small handling fee will be kept for banking costs.

### **Cancellation before 30th of June 2024**

50% refund. A small handling fee will be kept for banking costs.

### **Cancellation afterwards**

No refund.



**The organiser reserves the right to cancel WMOC 2024 in the following circumstances:**

- *Force majeure.*
- *Inability to guarantee adequate security for competitors and organisers.*
- *On advice from the Finnish Government or its agents e.g., the outbreak of an infectious disease or major environmental restrictions.*
- *In case of cancellation of the event by the organisers, entry fees will be refunded minus 30 €.*

## 26 Training possibilities

**Open courses will be offered in the Evenings on Mon 29 July Mynärastit, on Tue 30 July Satarastit, on Wed 31 July Turku-Rastit and on Thu 1st August Peimarin Rastit. More information on the web page.**

Training competitions held in similar terrains before the WMOC 2024 will be mentioned at the event web page with links to the events.

Maps of relevant areas for self-training can be provided by the organisers. More information on the event web page.

## 27 Public Races

Bring your family with you to Finland! The Fin5, a 5-day competition will be organised in the WMOC areas taking place alongside or right after WMOC 2024 races. Entry for single days is also possible. More information will be on the event web page.

## 28 Child care

Child care will be organised. There will be a pre-registration. More information will be provided later.





## 29 Accommodation

The organisers have booked over 3,000 beds from Turku and surrounding areas, varying from 4-star hotels to hostels. Elämys DMC is our official travel partner of the event. For more information and booking, please visit: [elamysevents.fi](http://elamysevents.fi)

There are also plenty of possibilities for cottage accommodation in the coastal area of the Turku Archipelago. A well maintained camping area can also be found on the tip of the beautiful island of Ruissalo, Ruissalo Camping. [Ruissalo Camping - Visitturku.fi](http://Ruissalo Camping - Visitturku.fi)

Hard floor accommodation is offered in classrooms at Hostel Linnasmäki. Showers and toilets are in the same building. There are no lockers available. Price is 23 € /person /night. Price includes mattress, blanket, pillow, and breakfast. Bring your own bed linen & towel. Reservation (name, nationality, sex, dates, e-mail address, telephone number) at latest on 10.6.2024 to [info@wmoc2024.fi](mailto:info@wmoc2024.fi). Payment at check-in at Hostel Linnasmäki.

[Hostel Linnasmäki Location](#)

## 30 Transport

There will be no organised transport to the Sprint Qualification and Sprint Final. Both Sprint Arenas will be easily accessible from the hotels located in Turku Centre and by public transport from the surrounding cities.

The organisers will offer a shuttle bus transport to all forest events from the Centre of Turku. A more specific pick up point will be informed later.

Bus tickets can be bought by 30th of April 2024 at the latest at Eventor by choosing "add services" (red circle). After 30th of April tickets can be bought at the Event Centre Kupittaa only if available. Bus tickets will be delivered with the competitor material.

Name	Club	Class	Punching card number	
Anu Ekstrom			123456 	160 EUR 

[Customer details](#)

## Return ticket, week

Adult	45 €/week
Child ≤14 years	20 €/week

## Return ticket, day

Forest Model, Adult	8 €/day
Forest Model, Child ≤14 years	4 €/day
Forest Qualification, Middle Final, Long Final, Adult	15 €/day
Forest Qualification, Middle Final, Long Final, Child ≤14 years	7 €/day

# 31 Parking

Parking during the days of Sprints: Use parking places and parking halls around the city. More information will be provided in the Bulletin 2.

On the days of Forest competitions, including Forest Model Events (Sauvo, Rymättylä, Parmaharju): A paid parking for passenger cars, campers and buses will be available. Overnight parking is not permitted.

Parking tickets for Forest competitions can be bought at Eventor by choosing add services (red circle). Parking tickets will be delivered with the competitor material. Tour operators can ask for an invoice by sending an email to [info@wmoc2024.fi](mailto:info@wmoc2024.fi).



**WMOC**  
2024  
TURKU FINLAND

## Prices

The week ticket includes parking in all Forest events. The day ticket includes parking on a chosen day. There is no parking fee in the Forest Model Event.

Passenger car	40 €/week, 14 €/day (FQ, MF, LF)
Motorhome/camper	60 €/week, 20 €/day (FQ, MF, LF)
Bus	240 €/week, 80 €/day (FQ, MF, LF)

## 32 Visa

You do not need a visa if you come from the EU or the Schengen area. Other international travellers may be required to hold a Finnish visa prior to travel to Finland, depending on your country of residence. For more information, please visit <https://um.fi/entering-finland-and-travelling-abroad>. If you require further assistance, please send an email to: [info@wmoc2024.fi](mailto:info@wmoc2024.fi).

## 33 Insurance

Each competitor participates in the event at his/her own risk. We recommend you obtain personal health and travel insurance prior to travel.

## 34 Travel to Turku

*Turku is easily accessible by plane, ferry, car and train.*

**Turku airport**, which is only 10 km from Turku Centre, has daily flights from several destinations. Please check for updated connections with different operators.

**Helsinki Airport** offers flights from all major cities in Europe. Helsinki Airport is 170 km from Turku and there are hourly train connections from Helsinki to Turku.

**Ferries** arrive daily to Turku and Naantali from Stockholm, Åland, and Kapellskär (which is 90 km from Stockholm).

# Welcome

*We warmly welcome you  
to enjoy the orienteering events  
in Southwestern Finland!*

**WMOC**  
2024  
TURKU  FINLAND



## ***Come and enjoy***

*Beautiful coastal terrains*

*Challenging sprints*

*The world's largest archipelago*

*The oldest town in Finland and its charming riverbank*

*A wonderful holiday in Southwestern Finland*



August 2-9

# WMOC 2024

## TURKU FINLAND

WORLD MASTERS ORIENTEERING CHAMPIONSHIPS

+358 40 87 26 247  
info@wmoc2024.fi

[wmoc2024.fi](https://wmoc2024.fi)

