

# BULLETIN 1

European MTB Orienteering Championships 2017  
**EMTBOC'17**

European Youth MTB Orienteering Championships 2017  
**EYMTBOC'17**

European Junior MTB Orienteering Championships  
2017  
**EJMTBOC'17**

World Masters MTB Orienteering Championships 2017  
**WMMTBOC'17**

MTB Orienteering World Cup 2017 round 2  
**MTBO WCup'17 round 2**



## → CONTENT

• CONTENT .....	2
• 1. ORGANIZERS .....	3
• 2. EVENT CONTROLLING.....	3
• 3. INFORMATION .....	4
• 4. GENERAL LOCATION – EVENT CENTER.....	4
• 5. PROGRAM OVERVIEW.....	5
• 6. CLASSES AND PARTICIPATION RESTRICTIONS.....	5
• 7. ENTRIES.....	6
• 8. ENTRY FEES .....	8
• 9. TRANSPORT (EXTRA COST) .....	10
• 10. TIME KEEPING SYSTEM.....	11
• 11. MAPS .....	11
• 12. EMBARGOED AREAS .....	12
• 13. TERRAIN DESCRIPTION .....	12
• 14. RULES.....	13
• 15. ANTI-DOPING .....	14
• 16. WEATHER.....	14
• 17. HEALTH CARE .....	14
• 18. VISAS.....	14
• 19. TRAINING OPPORTUNITIES .....	15
• 20. MEDIA SERVICES .....	15
• 21. LIVE COVERAGE.....	15
• 22. BICYCLE WASHING .....	15
• APPENDIX 1 : OLD MAPS.....	16



## → 1. ORGANIZERS



**IOF**  
International Orienteering  
Federation

[www.orienteeering.org](http://www.orienteeering.org)



**FFCO**  
French Orienteering  
Federation

[www.ffcorientation.fr](http://www.ffcorientation.fr)



**ASCO Orléans**  
French orienteering club

[www.asco-orleans.com](http://www.asco-orleans.com)



**Club du Plateau de Saclay**  
French orienteering club

[www.cops91.fr](http://www.cops91.fr)

<b>President:</b>	Franck REINEN
<b>Event director:</b>	Hélène EDIAR
<b>Technical director:</b>	Michel EDIAR
<b>Finance director:</b>	Brigitte FISCHER
<b>Map maker:</b>	Claude FLAMENT
<b>Protocol:</b>	Michel CHARIAU

For all information, please contact:  
contact@mtbo17.fr  
Site web: [www.mtbo2017.fr](http://www.mtbo2017.fr)

## → 2. EVENT CONTROLLING

**IOF advisor:** Tiago FERNANDES  
**National advisor:** Philippe POGU



### → 3. INFORMATION



Fédération française de course d'orientation  
15 passage de Mauxins  
75019 PARIS  
FRANCE  
+33 (0)1 47 97 11 91

### → 4. GENERAL LOCATION – EVENT CENTER

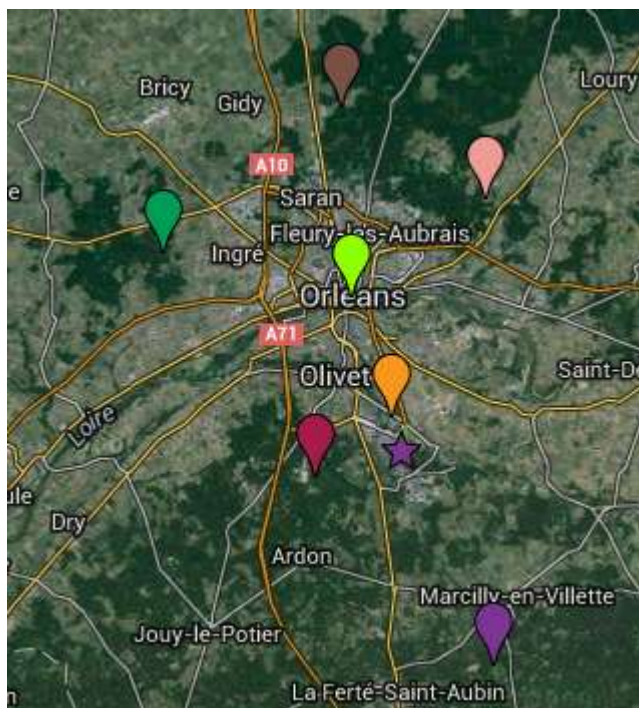
#### EVENT CENTER

Campus  
8 avenue du parc floral  
45000 ORLEANS

Distance from the Paris Orly airport to event center (Campus): 130 km

Distance from the Paris Roissy Charles de Gaulle airport to event center (Campus): 170 km

Distance from the Beauvais airport to event center (Campus): 230 km



## → 5. PROGRAM OVERVIEW

Date	Location	EMTBOC	EYMTBOC/EJMTBOC	WMMTBOC	Wcup
28/07/2017	Orléans	Event office (opening hours)	Event office (opening hours)	Event office (opening hours)	Event office (opening hours)
29/07/2017	Ardon	Model event	Model event	Model event	Model event
30/07/2017	Orléans	Sprint	Sprint	Sprint	Sprint
31/07/2017	Menestreau en Villette	Mixed sprint relay	Unofficial mixed sprint relay	Unofficial mixed sprint relay	-
01/08/2017	Ormes	MD	MD	MD	MD
02/08/2017	Orléans	Rest day	Rest day	Rest day	Rest day
03/08/2017	Cercotte	LD	LD	LD	LD
04/08/2017	Saint Jean de Braye	Relay	Relay	Unofficial relay	Relay

The locations are given for information.

## → 6. CLASSES AND PARTICIPATION RESTRICTIONS

### CLASSES

World Cup & EMTBOC: W/M 21

EYMTBOC: W/M 17

EJMTBOC: W/M 20

WMMTBOC: W/M 40, 45, 50, 55, 60, 65, 70, 75; Two adjacent classes in the same decade shall be merged if either or both have fewer than 10 entries. For example, if there are fewer than 10 entries in the W50 and/or W55.

### COMPETITION RULES

In this specific event:

- Riding off the track, trail or path is forbidden even with carrying the MTB
- Only the 839 symbol (ridable area) is allowed to ride off the track
- In France one drives on the RIGHT side of road.

Therefore riders must ride on the RIGHT side on all roads and tracks.

Overtaking slower riders should be done by the LEFT.

### PARTICIPATION RESTRICTION

#### MTBO World Cup & EMTBOC:

Each federation may enter a team of 12 competitors - up to 6 women and 6 men in each MTBO World Cup & EMTBOC event, and an unlimited number of team officials.

For each individual event format the current World Champion and European Champion will be given a wild card in addition to the entries from his/her Federation.

In the Relay each Federation may enter 2 women's teams and 2 men's teams, each consisting of 3 team members.





In Mixed Sprint Relay each federation may enter one relay team including one male and one female team member (women: legs 1 and 3, men: legs 2 and 4).

#### **EYMTBOC:**

There is one class for women and one for men. Only competitors who are entitled to compete in the classes W17 or M17 may participate. Each Federation may enter a team of up to 12 competitors - up to 6 women and 6 men, and an unlimited number of team officials. In each competition every Federation may enter up to 6 women and 6 men.

In the Relay, each Federation may enter two women's team and two men's team, each consisting of 3 team members.

In Unofficial Mixed Sprint Relay each federation may enter one relay team including one male and one female team member (women: legs 1 and 3, men: legs 2 and 4).

#### **EJMTBOC:**

All competitors represent a Federation.

In each competition every Federation may enter a team of up to 12 competitors — up to 6 women and 6 men — and a number of team officials.

In the Relay, each Federation may enter two women's teams and two men's teams, each consisting of 3 team members. Incomplete teams and teams with cyclists from more than one Federation are not allowed.

In Unofficial Mixed Sprint Relay each federation may enter one relay team including one male and one female team member (women: legs 1 and 3, men: legs 2 and 4).

#### **WMMTBOC:**

In the Unofficial Mixed Sprint Relay, by Country, teams including one male and one female team member (women: legs 1 and 3, men: legs 2 and 4) in Class 80 and 100.

In the Unofficial Relay, by Country, teams in M/W 120 and M/W 160.

Note:

M/W120: 3 Men or 3 Women where the sum of the classes does not reach 160 (examples: 40+40+40 / 40+50+60 / 50+50+50)

M/W160: 3 Men or 3 Women where the sum of the classes not less than 160 (examples: 50+50+60 / 50+60+60 / 40+60+60).

## 7. ENTRIES

### **General info**

Entries for Athlete's, Team Officials, VIP and Media, Extra Service orders and Accreditation will be managed in IOF Eventor. The Entry forms will be found on the Event page of the « Event in IOF Eventor ».

All entries for Athlete's and Team Officials are done by the National Team Manager.

VIP and Media do their own Entries.

All people that will Enter an IOF Event need an IOF Eventor Account. The account can be created on the main page of IOF Eventor by the person himself. <http://eventor.orienteering.org/>



## Important entry dates

Entry periods	Entry information	Deadlines
<b>Period 1</b> by 28th February 2017	<b>Preliminary entries</b> Team size entry information <ul style="list-style-type: none"> <li>National team manager name</li> <li>Number of competitors in each competition</li> <li>Number of team officials</li> <li>Number of relay teams</li> </ul> Services <ul style="list-style-type: none"> <li>Category of accommodation</li> </ul>	
<b>Period 2</b> 2017-02-28 to 2017-04-29	<b>Final entries</b> Team size entry information <ul style="list-style-type: none"> <li>National team manager name</li> <li>Number of competitors in each competition</li> <li>Number of team officials</li> <li>Number of relay teams</li> </ul> Services <ul style="list-style-type: none"> <li>Category of accommodation</li> </ul>	-3 month before Event start date = 2017-04-29
<b>Period 3</b> 2017-04-29 to 2017-07-19	<b>Name entries</b> Team size entry information <ul style="list-style-type: none"> <li>Changes Team members name entry</li> <li>Give the names of the individuals (Athletes and Team officials)</li> </ul> Services <ul style="list-style-type: none"> <li>Accommodation</li> <li>Hire SI card</li> <li>Transportation package</li> </ul>	Team members entry deadline = -10 days
<b>Period 4</b> 2017-07-19 to 2017-07-29	Team members name entry <ul style="list-style-type: none"> <li>Changed names</li> </ul>	Team members entry final deadline = -1 day
Start of Event date:	2017-07-29	
First competition date:	2017-07-29	

**Full payment for entry fees by 29th April 2017.**



## → 8. ENTRY FEES

### WORLD CUP & EMTBOC

<b>Accreditation fees (all participants: competitors and team officials, and others )</b>	80€ / person
<b>Model event</b>	15€ / person
<b>Mixed Sprint Relay</b>	90€ / team
<b>Sprint distance</b>	45€ / person
<b>Middle Distance</b>	50€ / person
<b>Long Distance</b>	60€ / person
<b>Relay</b>	135€ / team
<b>Party (dinner)</b>	30€ / person

### For EYMTBOC & EJMTBOC

<b>Accreditation fees (all participants: competitors and team officials, and others )</b>	60€ / person
<b>Model event</b>	15€ / person
<b>Unofficial Mixed Sprint Relay</b>	70€ / team
<b>Sprint distance</b>	35€ / person
<b>Middle Distance</b>	40€ / person
<b>Long Distance</b>	50€ / person
<b>Relay</b>	100€ / team
<b>Party (dinner)</b>	30€ / person





## For WMMBTOC

	By 1 <sup>st</sup> March 2017	By 1 <sup>st</sup> June 2017
<b>Accreditation fees (all participants: competitors and team officials, and others )</b>	60€ / person	70€ / person
<b>Model event</b>	15€ / person	20€ / person
<b>Mixed Sprint Relay</b>	90€ / team	100€ / team
<b>Sprint distance</b>	25€ / person	30€ / person
<b>Middle Distance</b>	35€ / person	40€ / person
<b>Long Distance</b>	40€ / person	45€ / person
<b>Relay</b>	110€ / team	120€ / team
<b>Party (dinner)</b>	30€ / person	35€ / person



## ➔ 9. TRANSPORT (EXTRA COST)

There is possibility of obtain a vehicle with trailer for MTBO and driver for the teams which ask it.  
An estimate will be address to all team which ask for a transport.

Write an email to [contact@mtbo17.fr](mailto:contact@mtbo17.fr) and tell him how much people, how much bike and from which airport.

Transportation to and from Paris Orly airport or Paris Roissy Charles de Gaulle can also be ordered from the organizers for a fee. Please inform the organizers in due time of any assistance you require with transportation.



## → 10. TIME KEEPING SYSTEM

The punching system used in all competitions will be SPORTident. SIAC (SI active card) will be rented to all competitors for the whole Event as part of starting fee. Although all competitors will be equipped with SIAC, standard contact punching system will be used at all control points.

System Air plus will be active only for contact-less finish time keeping.

Everybody should provide the number of their SI cards with the entry.

SI cards can be rented from Organizers for 30€ / for the event (50€ deposit).

## → 11. MAPS

### NEWS AND UPDATED MTB ORIENTEERING MAPS

**Scales:** 1:10 000, 1:15 000, 1:5000

**Vertical contour intervals:** 2.5 m

**Terrain type:** various kinds of roads, campaign, forest, urban area

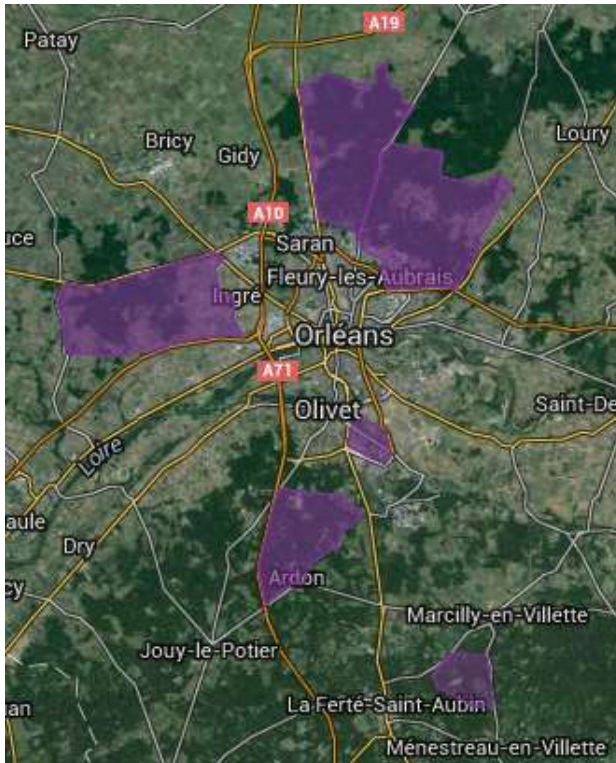
All events will be organized in accordance with the IOF International Specification for MTB Orienteering Maps (2010).

### MAP DETAILS

<b>Long distance</b>	1/15 000° - Eq. 2.5 m
<b>Middle distance</b>	1/10 000° - Eq. 2.5 m
<b>Mixed sprint relay</b>	1/5 000° - Eq. 2.5 m
<b>sprint</b>	1/5000 – Eq. 2.5m
<b>Relay</b>	1/15 000 – Eq. 2.5m



## → 12. EMBARGOED AREAS



See in appendix old maps of these areas.

The areas are out of bounds for all potential participants and team members, including competitors, team leaders, coaches, doctors, escorts, and any other person who through their knowledge of the terrain may influence the result of the competitions. For all other terrains the access is forbidden.

## → 13. TERRAIN DESCRIPTION

Orléans country is at 100 m altitude.

- Sprint and mixed sprint relay competitions will be taking place in forest and urban area
- Middle and Long Distance competitions will be taking place in forest area with dense road network.
- Relay competitions will be taking place in forest area with dense road network and plain in front of a castle to start, relay and finish.

No height difference.





All the competitions area is open to public traffic. The courses cross several public roads. There will be marshal's at the most critical places to help safe crossing and minimize disruption. Riders should follow the instruction of the marshal's. Still, it is the riders' responsibility to observe traffic rules and avoid unsafe practices.

## → 14. RULES

IOF MTBO competition rules 2016 valid from 1/1/2016: <http://orienteering.org/wp-content/uploads/2010/12/Competition-Rules-for-IOF-MTB-Orienteering-Events-2016.pdf>

EMTBOC competition rules valid from 1/1/2016: <http://orienteering.org/wp-content/uploads/2010/12/2016-EMTBOC-Rules.pdf>

International specification for MTBO Orienteering Maps 2010

Special rules for MTBO World Cup 2017 (not yet available)



## → 15. ANTI-DOPING

Doping is strictly forbidden. The IOF Anti-Doping Rules apply to this IOF World Cup MTBO. The organizers of World Cup MTBO are dedicated to supporting the anti-doping authorities in their work. Doping controls may be carried out any time during the competition period. As some sites for the doping controls may be a few minutes' drive away, we suggest that athletes are prepared at all events to take along some dry clothes to change into after their race.

Doping tests are always carried out in accordance with the procedures described in the WADA International Standard of testing.

Athletes who are selected for the doping tests must bring an official identification (with photo) to the doping test area. Accreditation cards with photo can also be used for this purpose. The athlete should also bring along their therapeutic use exemption (TUE) if applicable. In general, it is advisable that the athletes bring along their ID to all the competitions and events."

Please consult: <http://orienteering.org/anti-doping/>

## → 16. WEATHER

The expected average temperature in August is 20°C with relatively sunny weather, ideal conditions for competitions.

## → 17. HEALTH CARE

The Organizer will provide first aid at the competition centre and at the arenas of each event. The Organizer will not bear costs connected to health insurance of participants. We recommend each individual to arrange their own personal health insurance. Participants take part at their own risk.

### THE NEAREST HOSPITAL

Hôpital La Source  
14 avenue de l'Hôpital  
45067 Orléans  
Tel: 02 38 51 44 44

## → 18. VISAS

### ENTRY PERMITS TO FRANCE

France is a full Schengen member state. The following IOF full member countries require visa to France: Belarus, China, Chinese Taipei, Colombia, Kazakhstan, DPR Korea, Moldova, Mongolia, Russia, South Africa, Turkey, and Ukraine.

Visas have to be applied for at your nearest France embassy. The organizers will assist participants as required to obtain visas. Please make sure that you allow for sufficient time (at least 3 months) for invitation letters and visa processing.





Please note that visa regulations are subject to change. Please double check your specific visa requirements.

## → 19. TRAINING OPPORTUNITIES

We offer two training maps without control points around Orléans  
For any information, contact: +33 (0)6 62 52 18 22, [president@mtbo17.fr](mailto:president@mtbo17.fr)

## → 20. MEDIA SERVICES

For any information, please contact: [media@mtbo17.fr](mailto:media@mtbo17.fr)

## → 21. LIVE COVERAGE

Detailed information will be given in Bulletin 3 and Bulletin 4.

## → 22. BICYCLE WASHING

Bicycle washing facilities will be available, detailed information will be given in Bulletin 3 and Bulletin 4.



