



Bulletin 2

Junior World Orienteering Championships 2015

4-10 July - Rauland, Norway



TELEMARK

-  Mountain area, 700-1100m altitude
-  Challenging terrains, top quality competitions
-  Discover the beauty of Telemark and the Norwegian mountains



Welcome!

The Norwegian Orienteering Federation (NOF) in collaboration with technical organizers Porsgrunn OL and IL Dyre Vaa, invites all national orienteering federations to join the Junior World Orienteering Championships 2015, to be held in Norway for the first time!

We are happy to invite you all to the beautiful Norwegian mountains, and we will do our best to prepare high quality events in a friendly, familiar and fair atmosphere. We will offer exciting activities for both athletes and spectators, and a worthy promotion of orienteering, thus contributing to the further development of our wonderful sport.

Dag Ausen

Event director

Table of contents

Welcome to Telemark and Rauland	3
Welcome to Rauland and Vinje municipality	4
Welcome to Høydalsmo and Tokke municipality	5
Organisers	6
Programme	7
Location	8
Embargoed areas	9
Terrain description	11
Competition courses	12
Training and competitions towards JWOC 2015	13
Entries	14
Accommodation and Board	15
Payments	16
Visas	16
Weather/Climate	16
Health services (first aid)	16
JWOC Tour	17
Media	17
Social & cultural	18
Information and address	19
Sponsors and partners	19

Welcome to Telemark and Rauland!

It is with great pleasure I welcome the entire orienteering world to the Junior World Orienteering Championships and the Sørlandsgaloppen race in Telemark and Rauland in the summer of 2015.

In this spectacular landscape the world's best young orienteers will gather to compete for the world championship. At the same time, as a public event, the Sørlandsgaloppen will be held in the same terrain. This is a summer race of long tradition, celebrating its 50th anniversary in Telemark in 2015.

The JWOC2015 and the SG2015 are not just about sports. They also provide an excellent opportunity for generating activity in the local community and region, and they allow us to share with you the stunning scenery of Norway, Telemark and Rauland. With several thousand people from all over the world convening on our region over a period of eight days, it is bound to create benefits for the local community. Telemark County Council is therefore happy to sponsor these events.

Porsgrunn O-lag and IL Dyre Vaa are two well run and experienced event organisers. To be awarded and accept the major responsibility of organising an international championship are examples of the can-do attitude that this region welcomes. Sport has a significant volunteering element to it, and without the many volunteers and enthusiasts involved most people would never get a chance to get active and become involved in sports.

Welcome to JWOC2015 and the Sørlandsgaloppen 2015 race in Rauland in Telemark!

Best sporting wishes from
Terje Riis-Johansen
County Mayor



Telemark – a region of contrasts

Telemark offers a wide range of outdoor adventures, an active labour market, an exciting arts scene and friendly locals. These are assets that the County Council wants to, treasure, develop further, and share with the world. Planning, facilitating and developing attractive activities and services are important, as are supporting and encouraging even more creativity.

Telemark County is often described as Norway in a nutshell, with its dazzling coastline and magnificent mountain plains. From the Skagerak coast the region stretches to the highlands of the Hardangervidda Plateau, taking in wide valleys, narrow creeks, steep mountainsides and numerous lakes along the way. The coastal region includes the Langesundfjord and its branches as well as an extensive outlying archipelago, especially in the area surrounding Kragerø. The contrasts and diversity are significant.

Telemark is a variety of attractions, experiences, nature and culture. The landscape is always shifting. The coast of Telemark is all about the joys of water and boating. Its beautiful coastal villages and towns are home to a lively mixture of people from many places. Mid-Telemark is surrounded by gentle hills and calm lakes connected to the Telemark canal – the old transport route from the coast to the upper regions of the county. This particular region is well known for commerce, culture and adventure.

Sitting like a roof on top of Telemark is the vast and majestic Hardangervidda Plateau. Your trip to the mountains may start or end up in Tinn or Vinje. Mount Gaustatoppen reaches towards the sky, offering spectacular views of this mythical region. Western Telemark represents much of the county's cultural identity, and here you are met by breathtaking scenery and a culture heritage with roots hundreds of years back in time.

The culture is varied. Telemark means folk music in Bø, rock in Langesund, poetry in Kragerø, traditional dance music in Seljord and blues in Notodden. And then there is the food. Local producers from the entire county have been reviving old recipes. The cuisine of Telemark offers gourmet experiences you cannot find anywhere else.

Discover Telemark at www.visittelemark.com

Welcome to Rauland and Vinje municipality

It is with great pleasure that I welcome everyone to Rauland in Vinje in connection with JWOC 2015.

Vinje is the municipality with the largest area in Telemark, and one of the largest in Norway. The landscape includes mountain terrain with reindeer and grouse, large forests with moose, deer, birds and small game, and lakes and rivers with beaver, brown trout and arctic char. Only about 3740 people live here, but they are very proud of their village and very pleased to host JWOC 2015.

About 10 000 years ago, this beautiful and varied nature saw the first settlements in these mountain valleys. Here societies developed which in spite of limited material resources were, and still are, unusually rich in culture. The villages Vinje and Rauland are known as strong traditional areas for folk music, folk literature and traditional crafts, and have fostered some of the greatest writers and musicians in the country.

In recent times our natural resources have led to 86% of the municipality being placed under protection and restrictions. Because a large part of Hardangervidda National Park is situated in Vinje, it has been designated a national park municipality. In addition, it has the largest population of wild reindeer in Norway.

Although traditional agriculture has declined here as it has in other mountainous areas of Norway, you can still see sheep grazing in the mountains, and the municipality is the only one in Telemark where goat rearing has a strong position. This is one of the reasons a goat adorns our municipal coat of arms; other reasons might be the qualities the goat represents: frugality, independence, and a headstrong nature!

Though fewer people make their living from agriculture now than before, our nature and culture are deciding factors in Vinje's position as a major and attractive tourist destination. Around the popular winter sports destinations in Rauland and Vågsli, there are thousands of new, comfortable cabins, and the number is still increasing. Especially during the holidays the guests outnumber the inhabitants in the municipality, which explains our extensive selection of goods and services.

Everyone who comes to Rauland for JWOC will encounter a modern community with a varied business life, and people who are committed to taking care of nature and their cultural identity. We hope you will enjoy our traditional hospitality, and we will do our very best to support JWOC 2015.

I look forward to meeting you, and wish you good luck in the preparations for the competitions!

Best regards,
Arne Vinje
Mayor of Vinje

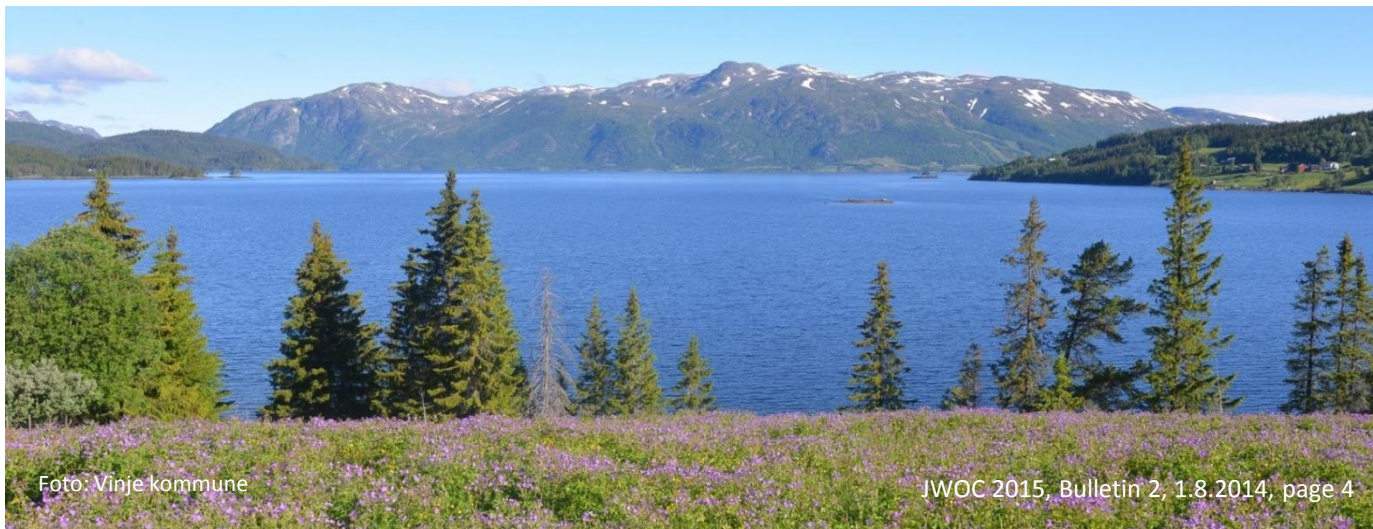




Foto: Tokke kommune

Welcome to Høydalsmo and Tokke municipality

We appreciate that Tokke have been given the opportunity to contribute to Junior World Orienteering Championship 2015.

Tokke municipality is proud of Høydalsmo as an arena of ski jumping and cross country and now as a co-hosting for this orienteering championship. Tokke municipality is situated in Vest-Telemark, the western part of Telemark county. The municipality is found at the north west end of the Telemark Canal, between Oslo and Stavanger, has an area of 980 km² (square meters) and has 2280 inhabitants.



Good luck with the preparations and above all best of luck to all the athletes!

Hilde Alice Vågslid, Mayor of Tokke

Imagine that you can sail the waterway from the coast to the foot of the mountainous Hardangervidda in the middle of Telemark! The Telemark Canal winds its way between the mountains and at the end of the fjord you find Dalen - lying in the warm valley between high cliffs and surrounded by wonderful nature. Dalen is the community center of Tokke. The area around can tempt you with a rich choice of cultural activities in vibrant rural communities. One of them is Høydalsmo - a small community with very active residents who put many hours in to volunteer work. This has given us many big events in sports during the years and now they contribute to a new event - Junior World Orienteering Championship 2015.



We welcome you to us and encourage you to see a bit of what we have to offer.
www.visitdalen.com

Organisers

Norwegian Orienteering Federation (NOF)

IL Dyre Vaa

Porsgrunn OL



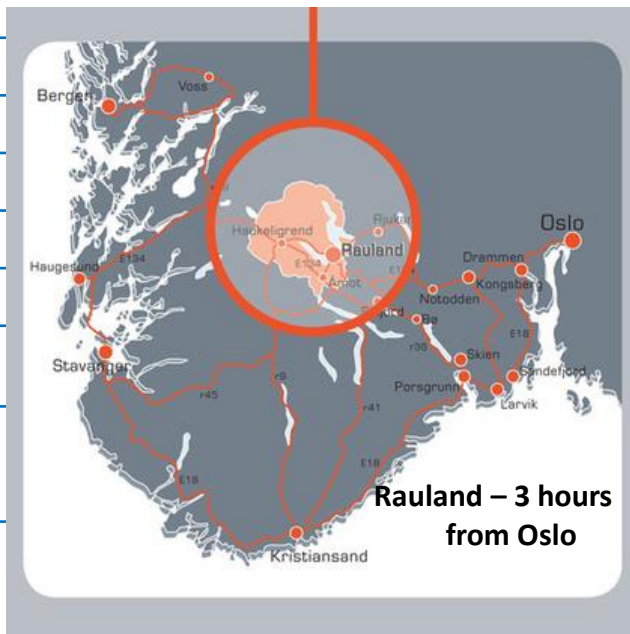
Organizing committee

Event director	Dag Ausen
Maps and courses	Thore Kornmo
Arenas and IT	Oscar Espeland
Accommodation	Nina Skeie
Finance	Hilde Vassend
Ceremonies	Marit Berg / Astrid Aamand
JWOC Tour	Jan Gatevold

Event controllers

Senior Event Adviser	Lars Forsberg (SE)
Lars.Forsberg@stockholmsidrotten.se	
National Controller	Ivar Maalen
ivar.maalen@nmbu.no	

The course is set for Rauland in 2015!



Maps and courses

Cartography	Morten Berglia (long) Leif Roger Hultgren (relay) Helge Gisholt (sprint/middle)
Digital "basemap" preparation	Terje Mathisen
Course planners	
Sprint	Jarle Ausland Anne Margrete H Nordberg
Middle	Thore Kornmo Per Christian Hagen
Long	Anders Nordberg Nils Albert Aamand
Relay	Dagfinn Torpe Asbjørn Byggland

Programme

Date	Location	JWOC	JWOC Tour
July 3 (Friday)		Arrival/ Accreditation/ Model event	
July 4 (Saturday)	Rauland Høydalsmo (JWOC Tour)	Accreditation Model event – Sprint/Middle Opening ceremony	Day 1
July 5 (Sunday)	Åmot	Sprint distance	JWOC Open
July 6 (Monday)	Rauland	Middle distance - Qualification	Day 2
July 7 (Tuesday)	Rauland	Middle distance – Final JWOC dinner at Raulandshallen	Day 3
July 8 (Wednesday)	Rauland	Model event – Long/Relay	
July 9 (Thursday)	Rauland	Long distance	Day 4
July 10 (Friday)	Rauland	Relay Closing ceremony	Day 5
July 11 (Saturday)		Departure	

Competition Rules

The Competition Rules for IOF Foot Orienteering Events (version valid from 1st January 2014) shall be applied to participation in the Junior World Orienteering Championships 2015. Please refer to the Competitions Rules on the IOF website www.orienteering.org

Classes and Participation Restriction

Classes: W 20, M 20

All competitors must be born in or after 1995 and must be full passport-holding citizens of the country they are representing.

Online production

There will be big-screen productions at all arenas with live access through internet. Online internet result service and live tracking will also be available on web.

Anti-doping Code

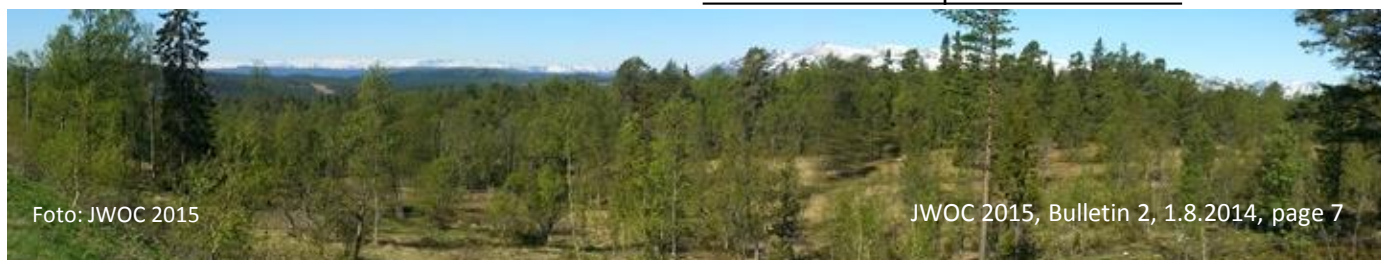
Doping is forbidden: „Think positive – test negative“. All competitors shall follow the IOF Anti-Doping Code.

Punching and Time-keeping System

Emit punching system will be used. All competitors will be equipped with Emit punching cards and EmiTags from the organizer. An electronic start gate will be used for the Sprint race.

Clothing

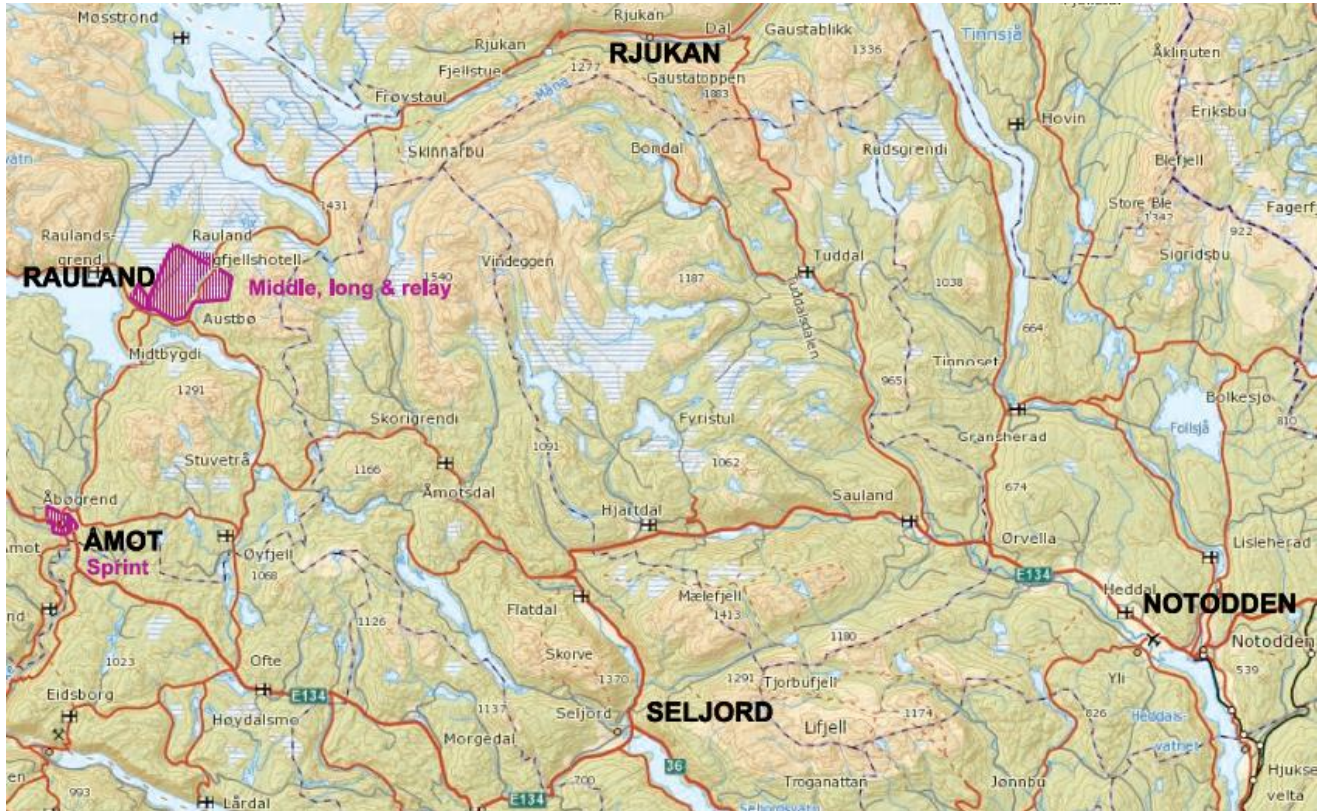
The regulations set by the Norwegian Orienteering Federation are valid. Clothing for the long, middle and relay races should be long trousers and short sleeves. No restrictions for the sprint distance. It is forbidden to use shoes with metal spikes and studs in the sprint competition as well as for the sprint model event.



Location

Venue and travel

JWOC 2015 will take place in Rauland, Telemark, located in the mountain area in southern Norway. The distance from the airports around Oslo is 3-4 hours.



Event centre and accommodation

The Event Centre will be at Rauland Høgfjellshotell, located in beautiful environments and not far from the JWOC arenas. Teams will be accommodated in apartments and cabins around the hotel and at Vierli Tourist center close by. Media representatives and IOF officials will be accommodated at the hotel. Panoramic views of Raulandsfjell and Hardangervidda can be expected.

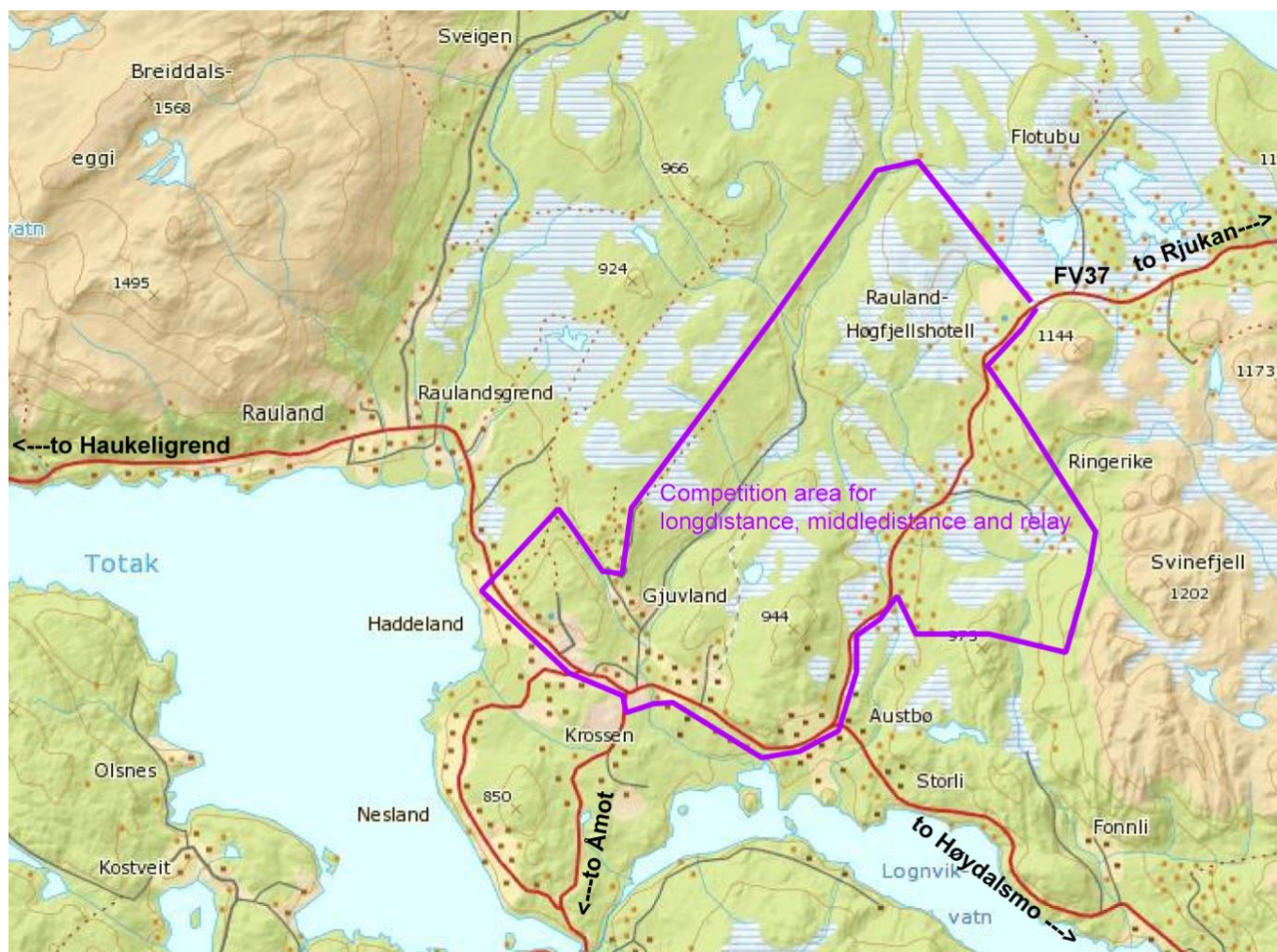
Various types of accommodation are available for spectators in the vicinity of the Event Centre and competition areas; - hotels, pensions, youth hostels, bed and breakfasts and privately owned apartments/cabins for rental. There will also be designated areas for camping.

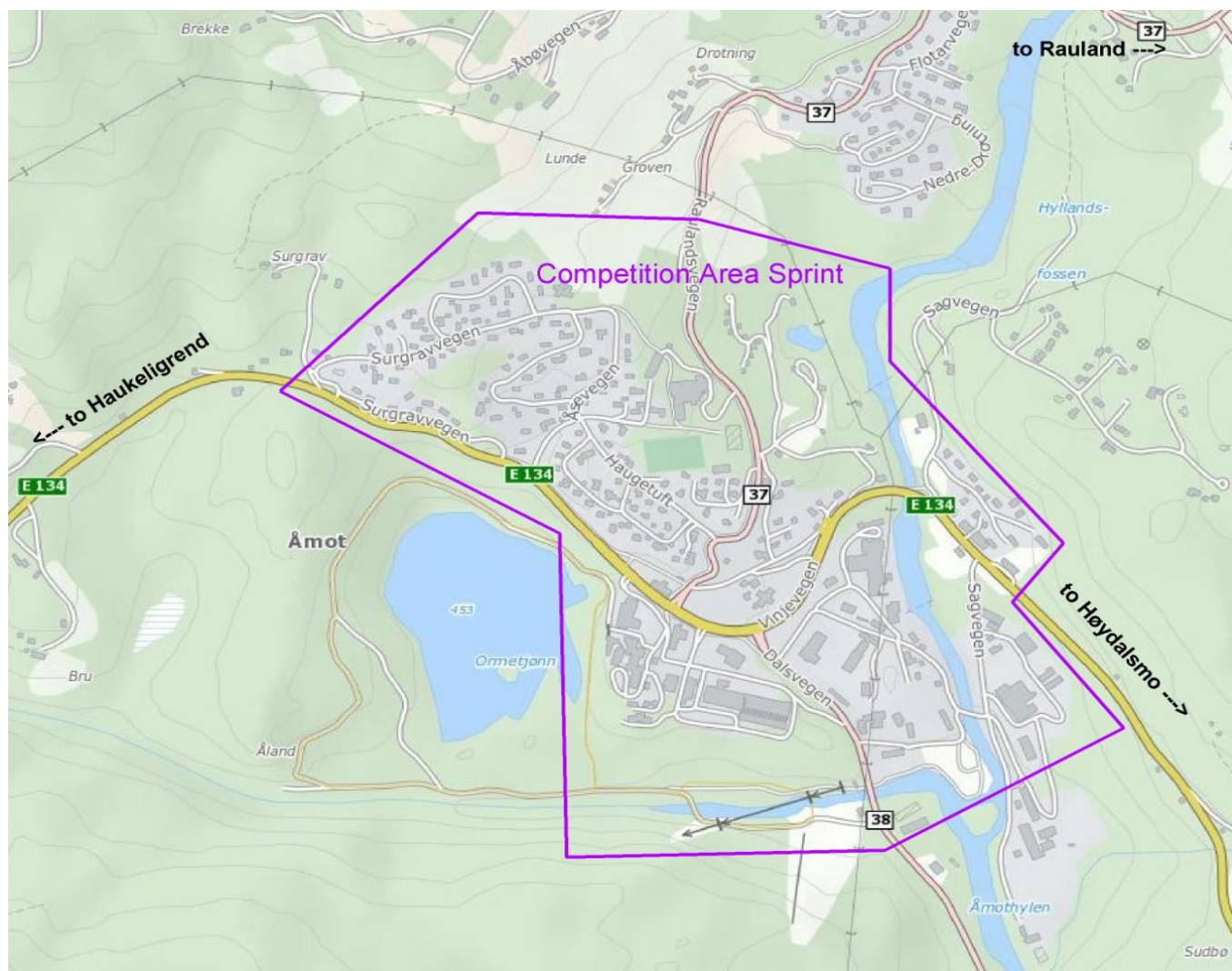


Foto: JWOC 2015

Embargoed areas

With reference to the IOF Competition Rules, the area indicated on the accompanying map are embargoed for the middle distance, long distance and relay. For the sprint distance, residential areas in Åmot are restricted, see map on next page. Potential team members, leaders and others, whose knowledge of the terrain could influence results of the JWOC competition, are prohibited from entering these areas. However, public roads passing through the areas may be used. The restrictions are also valid for ski tracks in the area during winter time. See detailed restriction at the web-page. Some areas are already opened for training, and more will be opened during the summer 2014. See page 13 and web for details. Old maps in the area are available at the web (non-printable versions). Printed versions are offered for sale.





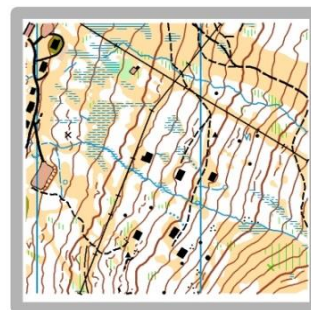
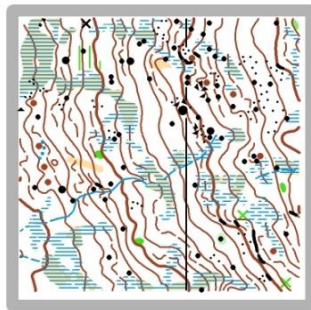
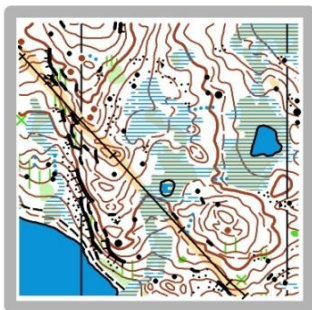
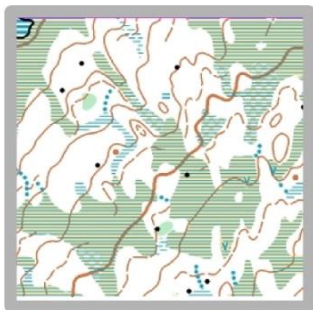
For the sprint distance, residential areas in Åmot are restricted. Public roads passing through the areas may be used.



Terrain description

Mountain forest 700-1100 m above sea level. Mainly open pine and birch forest with a lot of small and bigger marshes. Lower areas and hillsides also with spruce. In general very good runnability and visibility. Some smaller areas with reduced runnability and visibility due to undergrowth, thicker forest and rocks. Varying technical challenges from areas with smooth contours and few details to areas with complex contours and many map details. Some old man-made features like reminders of old, small mountain farms. A few smaller areas with a lot of newer mountain cabins and gravel roads. Part of the terrain has cross-country ski tracks and alpine ski slopes.

Sprint		Long Distance	
Terrain form	Moderately hilly with some steep slopes.	Terrain form	Moderately hilly area at an altitude of 800-900 m. Variation between areas with smooth contours to complex detailed areas and some steep slopes.
Vegetation	Urban area with partly private and public ground. Public areas with grass and also small areas with easy runnable forest.	Vegetation	Open pine and birch forest with open and semi-open marches. Smaller areas with reduced runnability due to undergrowth and rocks.
Runnability	Good	Runnability	Mostly very good, but there are rocky ground in some areas reducing the runnability . Precipitation prior to the championship will affect the runnability of the marches.
Visibility	Excellent	Visibility	Excellent
Paths and roads	Mostly residential area.	Paths and roads	Only a few paths run through the terrain.
Special features	Shoes with metal spikes and studs are not allowed.	Special features	
Middle Distance		Relay	
Terrain form	Hillsides with smooth contours, but also areas with more complex contours.	Terrain form	The course will mostly go through quite flat terrain, but there will also be hillsides of varying steepness in parts of the course.
Vegetation	Mostly pine and birch forest with open and semi-open marches, but also areas with spruce. Smaller areas with reduced runnability due to undergrowth.	Vegetation	Mostly pine and birch forest with open and semi-open marches. Smaller areas with reduced runnability due to undergrowth.
Runnability	Very good runnability , but precipitation prior to the championship will affect the runnability of the marches.	Runnability	Very good runnability , but precipitation prior to the championship will affect the runnability of the marches.
Visibility	Mostly good, but visibility will vary along the course.	Visibility	Excellent
Paths and roads	A few paths and private forest roads go through the competition area.	Paths and roads	Only a few paths run through the terrain.
Special features	Very distinct anthills are shown on maps by brown crosses.	Special features	



"A wonderful terrain! You won't forget this!"

Anders Nordberg, JWOC 2015 ambassador
Triple NOC winner 2005 and WOC medalist.

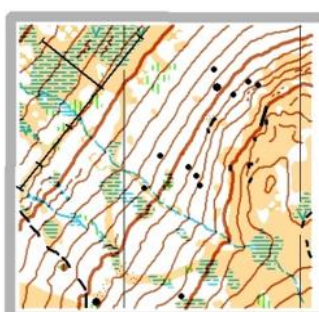
Competition courses

Competition	Class	Approx. winning time	Approx. length *
Sprint	Women	14 min	3,5 km
	Men	14 min	4,0 km
Middle qualification	Women	23 min	3,3 km
	Men	22 min	3,8 km
Middle final	Women	25 min	3,5 km
	Men	25 min	4,3 km
Long	Women	55 min	7,9 km
	Men	70 min	11,5 km
Relay	Women	105 min	4,5-5,0 km
	Men	105 min	5,0-6,0 km

*The sprint course lengths are the shortest feasible route as specified in IOF Foot Orienteering Competition Rules.

Competition maps

Competition	Scale	Contours
Sprint	1 : 4.000	2 m
Middle qualification	1 : 10.000	5 m
Middle final	1 : 10.000	5 m
Long	1 : 15.000	5 m
Relay	1 : 10.000	5 m



Training and competitions towards JWOC 2015

Several training courses are offered in relevant terrain in and close to Rauland during the summer 2014, see map and www.jwoc2015.org for details. Teams and individuals are welcome to visit the area during the summer 2014 and spring 2015. Snow conditions should be expected between November and April. Official training courses for 2014 are offered from 15 June to 25 September.

Official training camps

Training camps will be organized in JWOC-relevant terrains. The first official training period will be in August 2014 and the second period one week in front of the competitions in 2015.

Camp Norway 4-7 August 2014

The official training camp for 2014 will be organized by the Norwegian Orienteering Association as Camp Norway from 4-7th August 2014. See separate information and invitation at www.jwoc2015.org or at www.orientering.no. The trainings offered at Camp Norway will be available after this (in addition to the training courses available from 15 June) if the dates do not suit you or your team.

Accommodation

Vierli tourist center (cottages): www.vierli.no

Raulandsakademiet (youth hostel) :

www.raulandsakademiet.no

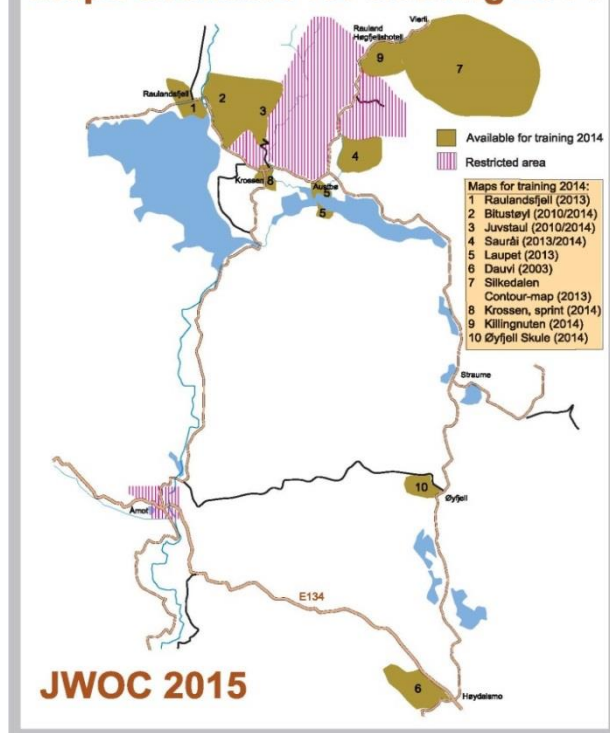
Rauland høg fjellshotell (apartments):

www.rauland.no

Contact person maps and training

Nils Albert Aamand, IL Dyre Vaa, +47-474 14 489,
training@jwoc2015.org

Maps available for training 2014



Competitions in the area

11-13th July 2014 is the traditional mountain race "Fjelløpet i Vinje" held from Vierli in Rauland. Friday afternoon there will be a middle distance warm-up competition in Øyfjell by Høydalsmo IL. Saturday a traditional mountain orienteering competition from Vierli take place and Sunday a long distance at the map *Killingnuten* will be held. All competitions at complete new maps. Great mountain terrain of 700-1200 meters. Invitation and registration at <http://eventor.orientering.no>.



Entries

Deadlines

The **deadline for preliminary entries is 27 April 2015**. All entries should be confirmed by full payment no later than **23 May 2015**. For fees and payment details, see below and on page 16.

The official entry form may be downloaded from the JWOC 2015 website (www.jwoc2015.org). Usage of the official entry forms is mandatory.

At the latest on the deadline for preliminary entries, the following information must be included:

- Number of competitors in each class (maximum 6 women and 6 men)
- Number of relay teams in each class (maximum 2 female and 2 male teams)
- Number of team officials (maximum 4)
- Team leader's name and contact details
- Dates of arrival and departure
- Means of transport used
- Request for organized transport from Oslo Gardermoen airport/Oslo Central station if needed
- Accommodation requirements (for details refer to the accommodation chapter at page 16 in this bulletin)

The final entries with the names of competitors and officials must be sent to the organizers on official entry form no later than **24 June 2015**.

Entry fee

Entry		Fee (1 € approx. 8,2 NOK)
Accreditation		NOK 600
Individual competitions:	Sprint	NOK 400
	Middle (qual + final)	NOK 500
	Long	NOK 400
Relay (per team)		NOK 1.000
Late entry	Additional fee	NOK 100
Transportation services (local)	Additional fee	NOK 200

The accreditation fee includes participation in all Official Ceremonies including JWOC dinner in Raulandshallen and obligatory bus transport to all competitions. A local shuttle bus service is offered at specified times during the week. The transportation fee includes buss transport from the official accommodation/event center to and home from model events, transport home from all competitions and transport to and from all official Ceremonies and Meetings.

Athletes pay accreditation fee, entry fee for each competition taking part in and fee for transportation service if needed. Team officials pay the accreditation fee and the transportation service if needed

Organized transport from Oslo

The organizers offer transport from Oslo Gardermoen airport (OSL) and Oslo Central station at arrival and departure. Two departures from OSL will be offered during Friday 4 July 2015. This bus transport should be ordered together with the booking of accommodation and board. Form A should be used (available at www.jwoc2015.org).

Transport	Fee (1 € approx. 8,2 NOK)
Bus transport Gardermoen/Oslo – Rauland - Gardermoen/Oslo (Friday 3 July / 11 July)	NOK 400 per person each way

Accommodation and Board

Accommodation offerings are given below. All accommodation and board should be booked no later than **27 April 2015**. Payment should be made no later than **23 May 2015**. Payment details on the next page. Adjustments may be done, but no later than **4 June 2015**.

Accommodation alternatives

Two locations are offered, one at Rauland Høgfjellshotel, the JWOC event centre, and one at Vierli Tourist Centre. The distance between them is around 2 km.

Five bed apartments are offered at Rauland hotel. High standard apartments directly connected to the hotel with various facilities. Two bed rooms, one with a double bed and one with a single bed above a double bed. Rauland hotel can only be booked together with board. www.visitrauland.com/Aktoer/Rauland-Hoegfjellshotell.

Good standard cabins of various sizes are offered at Vierli Tourist Centre. In the table below 6(+3) means that the cabin has 6 beds, and that 3 of the beds is extra wide so that it is possible for two persons to share it. However, the bed width is not full double-bed size, so the recommended number of person per cabin is 6. Similarly for the other cabin types. Vierli can be booked without board. For more details, see www.rauland.org/Aktoer/Vierli-Turistsenter/Vierli-Cabins.

Board alternatives

In general healthy food suitable for active athletes will be offered. Common JWOC dinner in Raulandshallen Tuesday 8 July is included in the accreditation fee. Breakfast every day is offered both at Rauland hotel and at Vierli. Packed lunch is offered, combined with the breakfast. The packed lunch is pre-made, fixed size at the hotel and self-made at Vierli. Rauland hotel also offer hotel buffet lunch the two days without JWOC competitions.

Offer	Location / standard	Accommodation Cost, 3 July – 11 July
A-R1	Rauland Høgfjellshotel, 5 bed apartment	NOK 8000 per apartment, irrespectively of number of occupants (maximum 5 persons per apartment)
A-V1	Vierli Tourist Centre, 4 (+2) persons cabin	NOK 4800 per cabin, irrespectively of number of occupants
A-V2	Vierli Tourist Centre, 6 (+3) persons cabin	NOK 7200 per cabin, irrespectively of number of occupants
A-V3	Vierli Tourist Centre, 8 (+4) persons cabin	NOK 9600 per cabin, irrespectively of number of occupants

Offer	Location	Board Cost, 3 July – 11 July
B-R1	Rauland Høgfjellshotel	FULL BOARD: Buffet breakfast 8 days, packed lunch 8 days, buffet lunch Saturday 4 July and Wednesday 8 July, dinner buffet 7 days, NOK 3000 per person
B-R2	Rauland Høgfjellshotel	NO BREAKFAST: Buffet lunch Saturday 4 July and Wednesday 8 July, dinner buffet 7 days (no breakfast or packed lunch), NOK 1800 per person
B-V1	Vierli Tourist Centre	FULL BOARD: Breakfast in cafeteria 8 days, packed lunch 8 days, dinner in cafeteria 7 days, NOK 2080 per person
B-V2	Vierli Tourist Centre	ONLY BREAKFAST in cafeteria and packed lunch 8 days (no dinner), NOK 1000 per person
B-V3	Vierli Tourist Centre	ONLY DINNER in cafeteria 7 days (no breakfast or packed lunch), NOK 1150 per person
B-V4	Vierli Tourist Centre	ACCOMMODATION ONLY (no food)

Additional accommodation

Accommodation and meals one to six extra days immediately before the JWOC 2015 period can be booked at the similar prices. Please indicate the extended period on the Accommodation Entry form.

Payments

Full payments for accommodation and entries must be made by bank transfer in NOK no later than **23 May 2015**.

Please note that the payer is responsible for all bank fees and charges. Entries will not be deemed valid until full payment is received by the organizer.

Payment details

Name of Account:	JWOC 2015
Owners address:	Høgsethvegen 22, N-3914 Porsgrunn, Norway
Bank:	SpareBank 1 SMN
Bank address:	PO Box 4796, 7467 Trondheim, Norway
IBAN:	NO9326704483650
SWIFT:	SPTRNO22
Detail of payment:	[Country] – JWOC [entry fee/accommodation/bus] (please specify the amounts)

Visas

Instructions for visa applications are available online with the Norwegian Directorate of Immigration at www.udi.no/en. Select “Want to apply” which will guide you to an online application system. Most European and American citizens can travel to Norway without a visa. Please visit the website and check whether or not you will need a visa well in advance of the competition. If an official invitation letter from the JWOC organizers is needed, please make an official request for this to the email address info@jwoc2015.org.

Weather/Climate

The weather in the Norwegian mountains can vary quite a lot in the summer. You should be prepared for temperatures ranging from +5°C with strong wind and rain to +25°C with sun and calm wind.

Health Services (first aid)

First-aid services will be provided at the assembly areas of the competitions.

JWOC Tour: Sørlandsgaloppen 2015 – a true 50 years anniversary!

Attractive spectators events to JWOC 2015

The very first SG-competitions in 1965 took place in Høydalsmo and Rauland. SG 2015 will be spectators event in parallel with the JWOC events.

The same competition areas and maps will be used as for JWOC. Not only the challenging and varied terrain, but also the atmosphere of top events with future world stars, should make it worthwhile to come and take part. The programme and locations of stages will be arranged and scheduled so that JWOC Tour competitors will be able to spectate at all the JWOC events.

Don't miss the opportunity to be onside when youngsters from all over the world fight for medals, and at the same time compete in a wonderful terrain you never will forget!

More information and entry at: <http://porsgrunnol.no/jwoctour2015>

Media

We welcome all media representatives to JWOC 2015. Media representatives can receive information using the e-mail address: press@jwoc2015.org. A Press Centre will be open at the Event Centre throughout the whole event, where a copy machine, internet and phone connections will be available. We are ready to arrange accommodation for journalists in Rauland according to their wishes.

Entry form for media representatives will be available on www.jwoc2015.org in advance.

Media contact: Hans Christian Meen, telephone at +47 924 30 779.



Sørlandsgaloppen 2015 - a true 50 years anniversary!



Social & cultural

Rauland offers undisturbed nature, varied hiking trails, great fishing and much more. Art and handcraft from Telemark is famous, and Rauland has it all. Rjukan, the city which is world famous for the "heavy water sabotages", and now is on UNESCO's tentative list is only 45 minutes away.

Rauland has a rich cultural life with concert and other events all year around. The two great sculpture selections - the Dyre Vaa and Skinnarland collections are well worth a visit.

In the center of Rauland you will find everything you need, a bank, grocery stores, flowers, sporting equipment, hairdresser, post office, souvenir shop, clothing- gift and furnishing shop, library, restaurant, sports hall, swimming pool, gas and service station, doctor, dentist, a coffee shop and art exhibit, several museums and of course the Tourist Office.

We welcome you to a wonderful visit to the mountain village at the foot of Hardangervidda!



Information and address

JWOC 2015
v/Dag Ausen
Hubrovegen 34
3940 Porsgrunn
Norway

email: info@jwoc2015.org
web: www.jwoc2015.org
cell: +47-930 59 316



Sponsors and partners



RAULAND
HØGFJELLSHOTELL



TELEMARK
FYLKESKOMMUNE



Vinje
kommune



Tokke
kommune



NORSK
ORIENTERING

