



BULLETIN 2

OPEN GRODNO CUP – 2016

World Ranking Event (sprint)
of the International Orienteering Federation

Open International Match of Youth Orienteering Teams

14-17 April 2016

Belarusian Orienteering Federation, Grodno Regional Orienteering Federation, Grodno City Executive Committee and Orienteering Club “Kronan” are pleased to welcome you for traditional 3-day Orienteering Event “OPEN GRODNO CUP – 2016” and IOF World Ranking Event (WRE) in Grodno, Belarus. This event has been organized each year since 1977.

MAP OF THE REGION



Grodno is situated in the west of Belarus. It is 265 km west direction from Minsk and 280 km north direction from Brest, 30 km from Lithuania border and 20 km from Poland border.

ORGANIZERS

Event Organizers are Belarusian Orienteering Federation, Grodno Regional Orienteering Federation, Grodno City Executive Committee and Orienteering Club "Kronan".



Event director:
Edvard Arodz
+37529 588 99 11,
ed_91161@mail.ru



Main Referee:
Dmitry Krapivko
+37529 566 44 79,
freid-7@tut.by



Event General Secretary:
Viktar Shumel
+37529 787 92 93,
555viktor@mail.ru



Event director's assistant in technical issues:
Anatoliy Sytko



Registration:
Marya Radkevich
+37533 621 73 53,
maskaradm@gmail.com



IOF advisor:
Lech Trzypil
lechtrzpil@wp.pl



BOF advisor:
Andrei Yakauleu
+37529 613 81 52,
orienteer@tut.by

CONTACTS

Post address: 118-85 O.Solomovoj Str., 230027, Grodno, Belarus.

Organizational issues (Russian, Polish):
Edvard Arodz +37529 588 99 11

Organizational issues (English):
Dmitry Krapivko +37529 566 44 79

Applications:
Marya Radkevich +37533 621 73 53

e-mail: kronan@tut.by
Event website: kronanorient.grodno.net

CLASSES

Competition will be held in the following classes:

M/W 10, 12, 14, 16, 18, 21E(elite), 21S(short), 35, 40, 45, 50, 55, 60, 65.

MTBO(16-17.04): MTBO-M/W 16, 21E, 21S.

The distance is marked for classes M/W10.

IOF WRE (sprint) is on 17.04.2016 for classes M/W21E.

Organizers reserve the right to combine classes in case of a small number of participants in a class (less than 5).

Number of sportsmen in team is not limited.

PROGRAM

14.04.2016 17:00-20:00 - Arrival of participants

15.04.2016 **Day 1**

10:00-13:00 - Registration in the arena of competition

13:30 - Opening ceremony

14:00 - Start at extended middle distance

16.04.2016 **Day 2**

08:00-08:45 - Registration in the arena of competition

09:00 - Start of sprint

11:00 - Start of sprint MTBO

15:00 - Start at extended middle distance

17:00 - Start at middle distance MTBO

17.04.2016 **Day 3**

10:00 - Start of sprint (WRE)

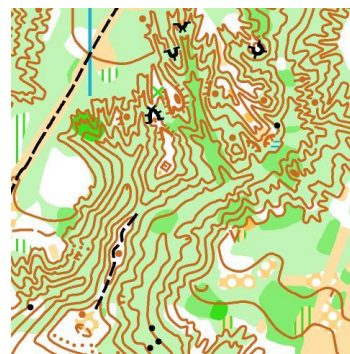
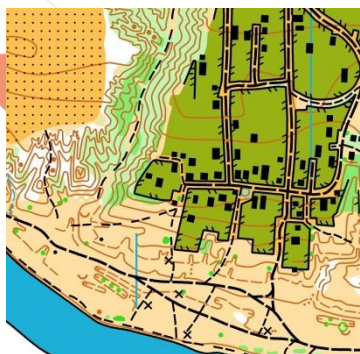
12:00 - Start of sprint MTBO

13:00 - Prize giving ceremony

MAPS

Extended middle distance 15.04.2016 (Friday)

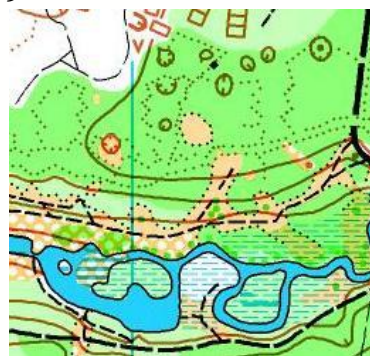
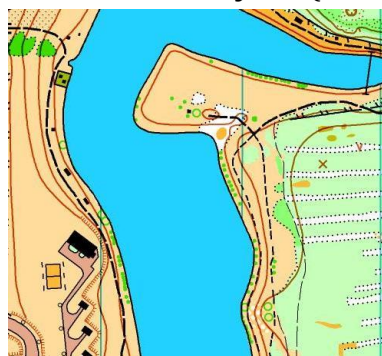
«Prigodichy» (new map)



Author: Aleksandr Efimenko, 2015

Sprint 16.04.2016 (Saturday)

« reservoir Verhneye » (new map)



Author: Yevgeny Dolinin, 2014-2015

Extended middle distance 16.04.2016 (Saturday)

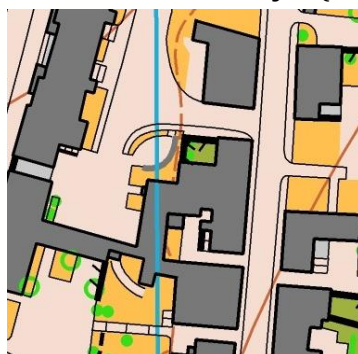
«Korobchicy» (new map)



Author: Aleksandr Efimenko, 2015

Sprint 17.04.2016 (Sunday)

«Bernardine monastery» (new map)



Author: Dmitry Krapivko, 2015-2016





REGISTRATION AND ENTRY FEES

For application for the competition please complete the entry form available online at kronanorient.grodno.net or a [direct link](#).

Changes after 11.04.2015 will be accepted only in the same class for a fee of 10000 BYR per each change.

During the registration a medical health certificate signed by a doctor must be provided. Adult participants can write a receipt about their personal responsibility for their life and health instead of the medical health certificate (the form is available on the website of the competition and while getting the starter pack).

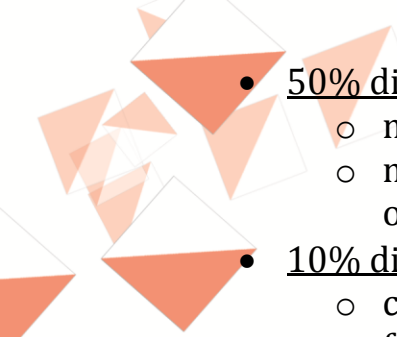
Entry fees:

	Number of starts	 MW 12-16 MW 65	 MW 18, 21E,21S, 35-60	 MTBO- MW 16	 MTBO- MW 21E, 21S
Entires until 31.03.2016	1	100 000	150 000	100 000	150 000
	2	130 000	200 000	130 000	200 000
	3	160 000	250 000	160 000	250 000
	4	200 000	300 000		
Entires during 01-11.04.2016	+ 50%				
Entires during 12-17.04.2016 if vacancies are available	+ 100%				
SI-card rent	x	20 000	20 000	20 000	20 000

All entry fees are in Belarusian rubles – BYR.

There is a system of discounts at the competition:

- 100% discount of the entry fee for:
 - honorary members of the Belarusian Orienteering Federation;
 - personally for Vladimir Kondratiev, Maxim Borisenko, Anastasiya Kevra, Mihail Synkov, Dmitriy Vashkievich, Daniil Yanshin, Pavel Krasko, Andrey Murashko, Vladimir Vasilenka, Anatoliy Bukovets, Sofya Karelina, Olga Tomasheva, Angelina Katkova, Valeriya Gavrilova, Alexandra Vankievich, Anastasiya Atamanovich, Bozhena Levchik, Ludmila Pirogova, Lidiya Makarevich;

- 
- 50% discount of the entry fee for:
 - members of Orienteering Club “Kronan”;
 - members of Belarusian team participating in the International match of youth orienteering teams;
 - 10% discount of the entry fee for:
 - children’s teams of 15 people or more;
 - families of three or more people.

It is necessary to mention the request for discount in the entry form.

The amount of the entry fee will be written next to the surname of each participant in the list.

All athletes from classes MW21E will participate on the Day 3 in the World Ranking Event (sprint). They need to create a user account in [IOF Eventor](#) before taking part in the event, and to make an entry for this start through [IOF Eventor](#).

Payment in cash during the competition is permitted only for foreign participants. Amount of fee is determined for them by the date of application.
Entry fee is not refundable for participants who registered but did not arrive.

PUNCHING SYSTEM

Sportident system will be used. All types of SI-card are allowed. SI-cards are available for rent from organizers.



ACCOMODATION

Organizer can book accommodation for you (if applied before 10.04.2016):

- "Kupalinka" recreation facility – (on the map) (website)
Double room 132 000 BYR/person/night
Quadruple room 122 000 BYR/person/night
Payment for accommodation on arrival.
- Hotel "Sport" – (on the map) (website)
Double room 200 000 BYR/person/night
Triple Room 141 5000 BYR/person/night
Room for five people 110 800 BYR/person/night
Payment for accommodation on arrival.
- Sports hall at school – (on the map)
20 000 BYR/ person for all time.
Payment for accommodation during the registration at the event center.
- Campsite – (on the map) на арене 2-го дня соревнований
Secured area, drinking water, a shower, a toilet, electricity, a common fireplace are available. Braisers and cookers are allowed.
20 000 BYR/person for all time.
Payment for accommodation during the registration at the event center.

You can accommodate on your own :

- "Fisherman's house" recreation facility – (on the map) (website)
- Grodno Hotels: belarushotels.by, hotel.by, booking.com.

TRANSPORT

Sportsmen may use private or public transport. Special transportation will be offered by organizers by a preliminary application only for:

15.04.2016r. to the middle distance arena and back,

16.04.2016r. to the sprint and distance arena and back.

Ticket price is 20 000 BYR/day per person.

MEALS

Food costs are borne by participants.

When ordering until 01.04.2016 organization of 3 meals a day in the dining room of "Kupalinka" recreation base is possible. Cost is 100 000 BYR/day per person.

Soft drinks will be offered to participants who come to finish in each of four starts.

On the second day of the competition (16.04) there will be a buffet.

Other addresses: [cafes](#), [canteens](#), [shops](#).

VISAS

<http://www.belarus.by/en/travel/travel-visas>

<http://belarustourism.by/>

All foreign participants can get free visas to Belarus on the invitation of the organizers of the competitions provided that the application for visa has been made at latest 01.04.2016. Contact by e-mail: kronan@tut.by

RESULTS

In the personal rate places are distributed according to the total time from each of four stages of the competition.

Results among teams are defined on the biggest sum of points in 4 events – total points of 10 best participants from the team in any group (except MTBO), according to the table of points.

In case of equal sum of points preference is given to a team having more first places (then second, third, etc.).

Score table

Place	1	2	...	6	7	8	...	15	16	17	...	38	39	...
Points MW 21E	100	95	...	75	72	69	...	48	46	44	...	2	1	1
Points MW 21S	60	55	...	35	32	29	...	8	6	4	...	1	1	1
Points MW 12-18	80	75	...	55	52	49	...	28	26	24	...	1	1	1
Points MW 35-65	70	65	...	45	42	39	...	18	16	14	...	1	1	1

SPONSORS

Nirāsan

INVELUM
invelum.by

FANCY
маткие игрушки

ABC

AGRO
INSPE