



EUROPEAN TRAIL ORIENTEERING CHAMPIONSHIPS

8 – 12 MAY, 2024
TURKU, FINLAND



BULLETIN 2

June 2023



Table of Contents

Welcome by the Event Director.....	3
Venue.....	4
Organizing Team.....	5
Event Advisers.....	5
Event Programme.....	5
Participation.....	6
Classes and Competition rules.....	6
Entries.....	7
Escorts.....	7
Maps.....	8
Preliminary course information.....	8
Event Centre.....	9
Accommodation.....	9
Ceremonies.....	10
Transport arrangements.....	10
Embargoed areas.....	11
Training possibilities.....	15
Terrains and previous maps.....	16
Visas.....	19
Contacts.....	19



Welcome by the Event Director

Welcome to the European Trail Orienteering Championships 2024!

The Finnish Orienteering federation and orienteering club Turun Metsänkävijät is pleased to invite you to ETOC 2024 that will be held in Southern Finland, in Turku area.

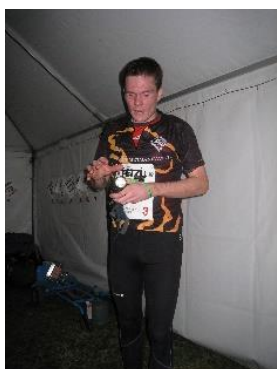
Our biggest goal is to offer top Trail-O athletes the best level competitions you can ever imagine. In achieving this, we rely on our extremely experienced organization team, top-level maps and the most enjoyable and demanding terrains.

In Easter 2018 Turun Metsänkävijät arranged FinTrailO in quite demanding weather with snow and ice, but despite of that, the feedback we received from our arrangements was very good. Of course, our challenge in organizing a top level ETOC competition is now much bigger, but we certainly are ready for that.

Turku area is quite easy to reach by different transport links and it is easy to find accommodation in Turku.

Hopefully there is peace on earth (and there is no pandemic complicating the organization of the competition) and you can totally concentrate on such kind of nice things, like ETOC 2024.

You are warmly welcome to Turku, Finland, and to European Trail-O Championships 2024!



Mikko Knuuti, Turun Metsänkävijät
Event Director

Venue

ETOC 2024 will be held in south-western Finland. Event Center is located in Turku, the oldest city and former capital of Finland. The year of the city's founding is 1229, when Pope Gregorius IX mentions the city called Aboa (the Latin name of Turku) for the first time in his bull.

Heart of the city specially in the summer time is the banks of river Aura with lots of restaurants and restaurant boats offering the best Finnish delicacies and refreshments. You will also meet Mr. Paavo Nurmi there, a nine-time Olympic champion in distance running.

Turku is not just a seaside city. It's the gateway to the Finnish archipelago, an unparalleled natural wonder made up of 40 000 islands and counting. A small glimpse of this can be seen on the tourist cruises that last a few hours that depart from the Aura river. Getting to know the archipelago better takes some time, but it's worth it. In summer, there are many different activities, accommodation and fresh local food available.



Distances:

Helsinki airport – Turku	170 km
Helsinki harbor – Turku	168 km
Tampere airport – Turku	163 km
Naantali harbor – Turku	16 km



Organizing Team

Event Director	Mikko Knuuti
Event secretary / Office	Tapani Koskenoja
Courses	Ari Uotila (PreO2) Ville Hiirsalmi (TempO) Juha Hiirsalmi (PreO1, Relay)
Maps	Juha Hiirsalmi
Technical expert	Tuomo Markelin
Results manager	Hannu Arki
Media relations	Kari Vainio

Event Advisers

Senior Event Adviser	Andrius Jovaisa (LTU)
National Controller	Ari Tertsunen

Event Programme

Tuesday	7.5.2024	Opening Ceremony, Banquet	Turku Market Square
Wednesday	8.5.2024	Model	Katariinanlaakso
Thursday	9.5.2024	PreO1	Kuninkoja
Friday	10.5.2024	PreO2	Suopelto
Saturday	11.5.2024	Relay	Kuparivuori
Sunday	12.5.2024	TempO qualification TempO final	Impivaara Urheilupuisto
Monday	13.5.2024	Departure	



Participation

Competitors representing member federations of the IOF, defined by the International Paralympic Committee as belonging to the European continent, can compete in ETOC. Competitors representing other member federations of the IOF can participate in ETOC but will not be eligible for European titles, medals or diplomas.

Classes and Competition rules

In the individual PreO competitions and in the TrailO Relay there is an O (Open) class and a P (Physically Challenged) class. In the TempO competition there is a single Open class.

In the individual PreO event a Federation may enter a maximum of 6 persons in each class. In the TempO event a Federation may enter a maximum of 8 persons.

In addition to the above the following may be entered by their Federations:

- The current European Champion may be entered in their respective classes in addition to the normal maximum.
- **2 juniors (aged 20 years or younger at the end of the calendar year) in each class and format.**

In the TrailO Relay a Federation may enter 2 teams in each class each consisting of 3 competitors. Only the better-placed team will count in the prize list.

The Competition Rules for IOF Trail Orienteering Events and the ETOC Rules valid in 2024 shall apply to the European Trail Orienteering Championships 2024. The rules are available for download on the IOF website <https://orienteering.sport/>



Entries

The entries will be open in December 2023. All entries have to be made through IOF Eventor.

The team size deadline is March 8th 2024. The team names deadline is April 26th 2024. Late entries will be surcharged as stated in the IOF rules (7.4). Entries will not be valid until the entry fee has been paid. The payment must be made by April 8th 2024. The payment details:

Turun Metsänkävijät, Läntinen Pitkäkatu 12, FIN-20100 TURKU
Nordea Bank Oyj, IBAN: FI69 1590 3000 1511 32, BIC: NDEAFIHH.
Enter Federation name in the Note for the Beneficiary.

Entry fees	PreO	130 Eur
	TempO	90 Eur
	Relay (per team)	160 Eur
Accreditation fees	Athlete	100 Eur
	Team Official	80 Eur
	Accompanying person, Escort	20 Eur
Banquet		30 Eur

Escorts

The competitors that need an escort shall bring an escort with them. The organizers will provide help in steeper hills.

With an escort accreditation (which is mandatory) only, a person cannot act as a team official or attend Team Official Meetings.

Maps

The maps of ETOC 2024 follow the International Standards for Sprint Orienteering ISSprOM2019, version valid on 1.1.2024. All maps are prepared in scale 1:4 000 and enlarged to 1:3 000, contour interval 2 m.

All maps made by Juha Hiirsalmi. Open source lidar data from National Land Survey of Finland and urban survey material from the cities of Turku and Naantali processed by Eero-Antti Lonka.

Preliminary course information

EVENT	Length	Controls	Timed controls	Road surface	Climb
Model	1,1 km	6+7	2 x 5 task (TempO) 1 x 3 task (PreO TC)	Smooth gravel Asphalt	5 m
PreO1	0,9 km	32	2 x 3 task	Smooth gravel	20 m
PreO2	1,2 km	32	2 x 3 task	Smooth gravel	25 m
Relay	0,8 km	3 x 16	7 x 5 task	Smooth gravel	20 m
TempO Qual.	1,0 km	-	6 x 5 task	Smooth gravel	30 m
TempO Final	1,2 km	-	9 x 5 task	Smooth gravel	20 m

Event Centre

The Event Centre is Turun Metsänkävijät Club house.
Located in Läntinen Pitkäkatu 12, Turku.
Team Official Meetings and other possible meetings will be organized there.



Accommodation

There is lots of accommodation capacity in Turku. Prices for four nights starting from 160 € (single room) and 200 € (double room). Most of the hotels and also several hostels have accessible rooms available.

<https://www.visitturku.fi/>

<https://kissmyturku.com/>



Ceremonies

The Opening Ceremony and medal ceremonies will be held at center of Turku close by Event Center.

Pre-event dinner (banquet) is organized on Tuesday evening after the Opening Ceremony. We would like to offer everybody chance for socializing too and it's better to have this event before competitions than on Sunday evening when most have already left the venue. Price includes dinner and activities (bowling

Transport arrangements

All event arenas can easily be reached by public transportation (www.foli.fi/en). Only few hundred meters from nearest bus stop. Instructions on how to get a week's bus pass are given in Bulletin 3. There are parking areas available close to all event arenas. The organizer does not arrange any transportation.

Distances to Event Center:

Turku Airport, 9 km

Helsinki Airport, 170 km

Turku port, 4 km

Naantali port, 15 km

Turku Railway Station, 650 m

Turku Bus Station, 350 m

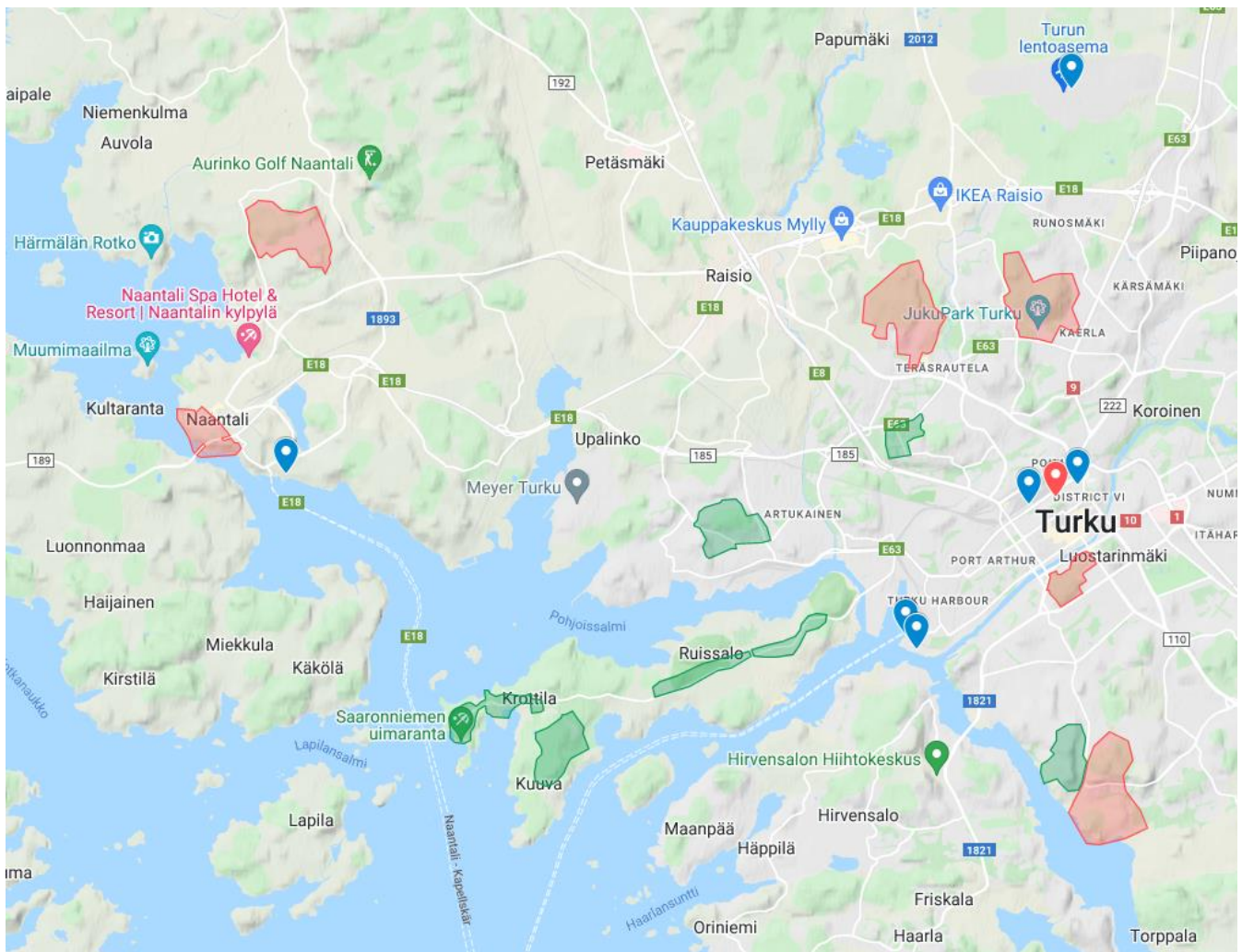
Distances from Event Center to Event Arenas varies between 2 km to 15 km.

Embargoed areas

From 29 May 2022, all potential ETOC 2024 participants, coaches, and team officials, as well all those people who could supply ETOC team members with information about the terrain, are prohibited to enter the embargoed areas. The detailed embargoed areas can be seen in [the map register of the Finnish Orienteering Federation](#) (“Harjoituskiellot”=Embargoed areas).

1) General map of embargoes and other locations

(RED=EMBARGO, GREEN=TRAINING MAP)

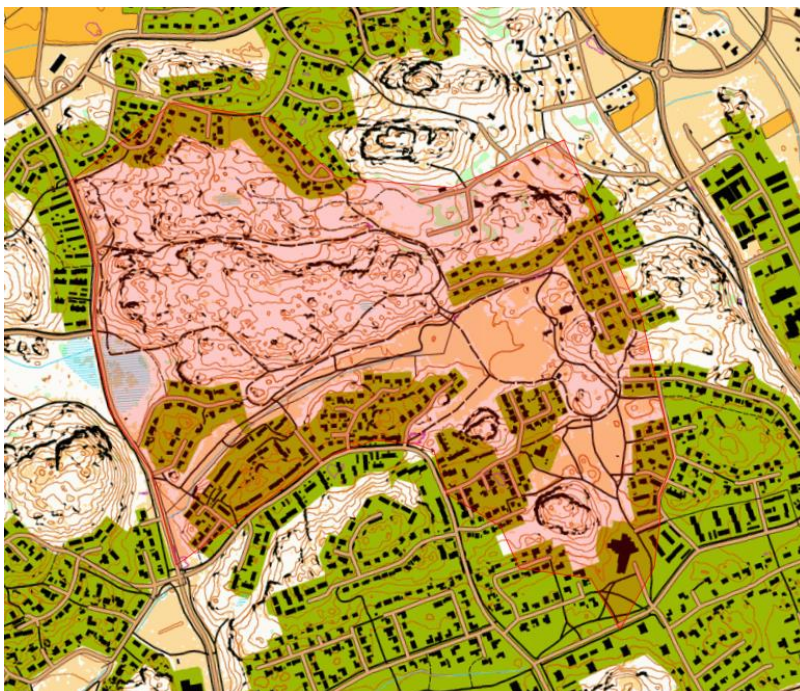


[LINK TO ABOVE MAP](#)

2) Kuparivuori, Naantali



3) Suovuori, Naantali



4) Impivaara, Turku



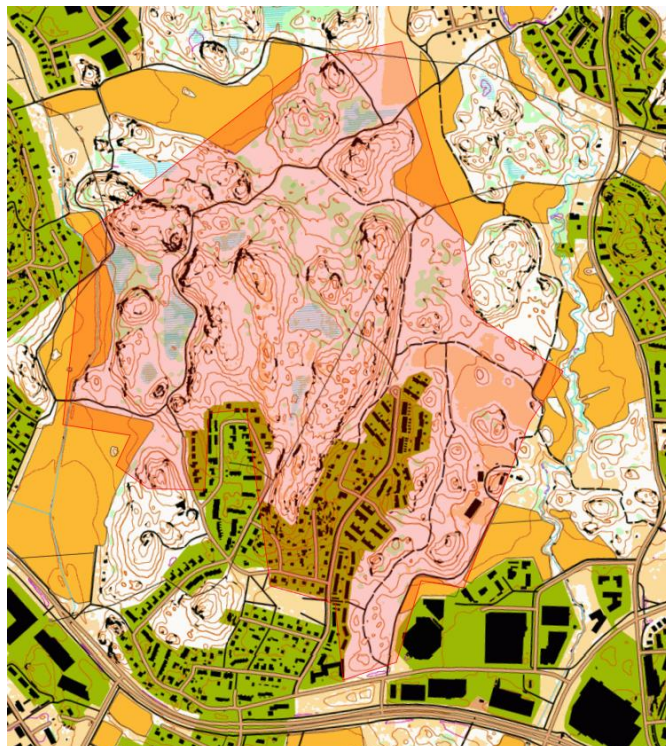
5) Katariinanlaakso, Turku



6) Paavo Nurmi Stadion, Turku



7) Kuninkoja, Turku





Training possibilities

Training opportunities will be available, please refer to the national event calendar for 2023 and 2024. For example FinTrailO 2018 & 2020 and Nordic Match 2022 maps are available for training. Set of maps of all three events in pdf-format with price 50 €/team. Orders etoc2024@tume.fi

Also specially organized training events are possible on request 2023 autumn.

Available training maps/areas shown in "[General map of embargoes and other locations](#)"

Set of pdf-files of foot-o maps of competition areas are available with price 30 €/team. Orders etoc2024@tume.fi

Terrains and previous maps

RELAY, Kuparivuori, Naantali



Never used for trail orienteering competition. [LINK TO OLD MAP](#)

PreO2, Suovuori, Naantali



Never used for trail orienteering. [LINK TO OLD MAP](#)

TempO Qualification, Impivaara, Turku



Never used for trail orienteering. [LINK TO OLD MAP](#)

Model, Katariinanlaakso, Turku



Never used for trail orienteering. [LINK TO OLD MAP](#)

TempO Final, Paavo Nurmi Stadion



Never used for trail orienteering. [LINK TO OLD MAP](#)

PreO1, Kuninkoja, Turku



Never used for trail orienteering competition. [LINK TO OLD MAP](#)

Visas

The Schengen states have jointly agreed which countries' citizens are required to present a visa. Each Schengen state decides which passports and travel documents it accepts from different countries' citizens.

Check if you need a visa to visit Finland and what travel documents are accepted in Finland: <https://um.fi/visa-requirement-and-travel-documents-accepted-by-finland>

Even if you do not need a visa to visit Finland, you need a valid passport or some other travel document accepted by Finland. It must be valid for at least ninety days after your intended date of departure from the Schengen area.

Contacts

Email: etoc2024@tume.fi

Website: www.tume.fi/etoc2024

Facebook: <https://www.facebook.com/etoc2024>

Twitter: www.twitter.com/etoc2024

Instagram: www.instagram.com/etoc2024

Organisers



TURUN METSÄNKÄVIJÄT RY



Suomen Suunnistusliitto