



**ORIENTEERING
2016**

**Miskolc
Hungary**

**FISU World University
Championship**



World University Championship

30 July - 4 August 2016, Miskolc



BULLETIN



1. Miskolc

"The city where nature and man created several miracles"

Miskolc is the fourth-largest city in Hungary by population and is the administrative, economic, educational and scientific centre of the region of Northern Hungary as well as the administrative seat of Borsod-Abaúj-Zemplén County. It has around 170.000 inhabitants.

The thousands of years of history, culture and natural potential of the city reveal a number of unique values, which find their way into the everyday lives of those who live in or visit Miskolc. Miskolc has charted a new course of development over the past few years: welcoming investors and visitors with its dynamically developing economy, new sectors of industry, renewing city centre and rich cultural and tourist opportunities.

The former industrial town, which has the longest main street in Europe, is situated at the foot of the picturesque Bükk Mountains, where the mountains of historic Hungary become gently rolling hills and give way to the rivers Sajó and Hernád, which connect the Great Plains to the highlands. Thus Miskolc is situated on the border between the plains and the mountains.

Miskolc is endowed with a wonderful natural environment. The border of the Bükk National Park runs through the city. This park is uniquely rich in stalactite and travertine caves and plateaus; its fauna and flora are colourful and diverse. The health-giving Cave Bath of Miskolc-Tapolca is famous all over the world. In beautiful Lillafüred, Hotel Palota and its mirror, Lake Hámor and a romantic waterfall await their guests.

The city of Miskolc lies 180 kilometres east of Budapest. The two cities are connected with a motorway that runs directly from Budapest International Airport. Debrecen International Airport is situated 90 kms from Miskolc and there is a direct motorway link to Miskolc.

2. University of Miskolc

The campus of the University of Miskolc is a city within the city of Miskolc, and is unique in Hungary in this respect. The constantly renewing and dynamically developing institution not only strengthens the regional role and influence of Miskolc, but directly contributes to the economic and social revitalization of the city and the region.

The university continues to enrich values through its educational and research work worthy of its 270-year history. The modernization and development of university infrastructure continues in a separate part of Miskolc, creating a modern environment for the 14.000 students and 2.000 lecturers of one of the region's most significant universities.

The high quality of education at our university is demonstrated not only by the number of professional awards received, but also by the continuously increasing number of students that choose the University of Miskolc when pursuing a higher education.

The development plan of the University of Miskolc, current until 2020, covers the fields of university structure, innovation and service. The most important tasks are drafted in the spirit of the slogan "Knowledge builds universities, universities build the future".

3. Organisers

On behalf of the International University Sports Federation (fisu.net), the 20th World University Orienteering Championships 2016 will be organised by:

- Hungarian University Sports Federation
- University of Miskolc
- Hungarian Orienteering Federation
- Miskolc Municipality
- Miskolc University Sports Club
- Diósgyőr Orienteering Club

4. Programme

Date	Morning	Afternoon/Evening
Wed 27 th July		Training
Thu 28 th July	Training	Training
Fri 29 th July	Training	Training
Sat 30 th July	Training	WUOC Opening Ceremony
Sun 31 th July		WUOC Sprint , WUOC Tour Sprint
Mon 1 st August	WUOC Long	WUOC Tour Long
Tue 2 nd August	WUOC Tour Middle	WUOC Sprint Relay
Wed 3 rd August	WUOC Middle	WUOC Tour Extended Middle
Thu 4 th August	WUOC Relay, Closing Ceremony	WUOC Banquet
Fri 5 th August	Departure	

5. Competition Rules

The event will follow the actual FISU Regulations For World University Championships and the Competition Rules for IOF Foot Orienteering Events (1st January 2016).

6. Participants

Participant of WUOC 2016

- have to be students who are currently officially registered as proceeding towards a degree or diploma at the University or similar institute whose status is recognized by the appropriate national academic authority or their country, or former students who have obtained their academic degree or diploma in the year 2015;
- must be at least 17 and less than 28 years of age on January 1st, 2016 (date of birth must be between January 1st, 1988 and December 31st, 1998);
- must have a full passport-holding citizenship of the country they represent.

Each country may enter a team consisting of up to 12 competitors (6 woman and 6 men) and 4 team officials.

Maximum number of competitors per country in disciplines:

Sprint	4 men and 4 women
Long Distance	4 men and 4 women
Mixed Sprint Relay	1 team (order of runners: woman - man - man - woman)
Middle Distance	4 men and 4 women
Relay	2 men's team (3 leg) and 2 woman's team (3 leg)

7. Entry Fees

- Participation fee: 70 EUR/person/night
- FISU registration fee: 20 EUR/person for FISU Member Associations
- FISU registration fee: 40 EUR/person for Non-Member Associations

The CIC delegate during the accreditation will issue a pro-forma invoice to be signed by the Head of Delegation.

The total amount of the FISU registration fees for the year 2016 due by a NUSF will be invoiced at the end of the year.

8. Entry Procedure

- General Entries: deadline is 30th January, 2016
- Quantitative Entries: deadline is 30th April, 2016
- Individual Entries: deadline is 30th June, 2016

Additional information will be published on the website wuoc2016.hu and in separate Bulletins.

9. Entry Permits to Hungary

From December 21, 2007 Hungary is a member of the Schengen Area, and applies the Schengen legislation in full. Significant changes subsequent to Hungary's Schengen-membership are that

- visas and residence permits issued by one of the Schengen States are valid also for Hungary,
- visas issued by Hungarian representations abroad and residence permits issued by Hungarian national authorities are also valid for the entire Schengen Area.

Please note that the latest amendment of the Article 5 (1) (a) of the Schengen Borders Code (entered into force on 19 July 2013) introduces new criteria for travel documents of third-country nationals entitling to cross the borders:

- the validity of the travel document shall last until at least three months after the intended date of departure from the territory of the Member States. In a justified case of emergency, this obligation may be waived;
- the travel document shall have been issued within the previous 10 years.

Please check the list of countries, which citizens may travel to Hungary without visa: konzulizsolgalat.kormany.hu/en and Visa Waiver Agreements (konzulizsolgalat.kormany.hu/visa-waiver-agreements)

Visas have to be applied for at your nearest Hungarian Embassy. Please note that conditions of entry to Hungary can change and all WUOC 2016 participants are advised to keep abreast of the current situation by consulting their local Hungarian Embassy.

10. Embargoed areas

With reference to the Competition Rules for IOF Foot Orienteering Events, the listed areas are out of bounds for all potential WUOC 2016 team members (competitors, team leaders, coaches, doctors, escorts, etc.) and other persons who, through their knowledge of the terrain or the events, may influence the result of the competitions being held during WUOC 2016.

Spelt out in detail this means:

- no organised orienteering activities may take place in these areas.
- no training sessions, i.e. running/races, testing routes may take place in these areas.
- no-one with potential connection to a team (athletes or others) may visit the embargoed areas.

Offences must be reported to Száva ZSIGMOND at the WUOC 2016 Office - e-mail: office@wuoc2016.hu

Copies of the most recent versions of the orienteering maps of the embargoed areas are published on the website of [WUOC 2016](http://WUOC2016).

Embargoed areas of WUOC 2016 and previous O-maps:

Nr.	Area	Previous O-maps (only latest editions)
1.	Lillafüred (spint)	Bükk (2009) – 1:15.000
2.	Csanyik (long distance)	Csanyik (1994) – 1:15.000 Miskolc-Zoo (2009) – 1:4.000 Miskolc-Csanyik (2009) – 1:4.000
3.	Downtown 1., 2. (sprint relay)	Belváros (2009-2012) – 1:4.000
4.	Jávorkút (middle distance, relay, reserve area for forest race)	Bükk (2009) – 1:15.000 Bánkút-Borovnyák (2009) – 1:15.000 Bükk-fennsík (2002) – 1:15.000 Jávorkút (1996) – 1:15.000
5.	Hospital (sprint reserve)	no existing previous O-map

11. Map details

WUOC Competition map	Scale	Contour interval
Sprint	1:4.000	2,5 m
Long Distance	1:15.000	5 m
Sprint Mixed Relay	1:4.000	2,5 m
Middle Distance and Relay	1:10.000	5 m

Maps are drawn according to the International Specification for Orienteering Maps (ISOM2000) and the International Specification for Sprint Orienteering Maps (ISSOM2007).

12. Peculiarities

The special symbol of the lime burning place - represented with a round earth wall (see below) - has a country-specific marking in the control descriptions: a letter V in a circle (see below).



lime burning place



lime burning place control description

13. Terrain Descriptions

WUOC 2016 Sprint	
Land form	Located between 250-320 m asl. Two generally flat areas connected by a steep hillside with hanging gardens
Vegetation	Parks, urban areas
Runnability	Excellent, apart from the climbing
Visibility	Excellent
Paths and roads	100% urban area

WUOC 2016 Long	
Land form	Located 200-400 ms a.s.l. Rather big land forms. Moderately steep to steep hills up to 100 ms height. Some areas with erosion features. Some stones, rocky areas.
Vegetation	Mostly forested (mainly beech forest) area. Some green parts, which are mainly OK for un through. Undergrowth in places. Dry underfoot.
Runnability	Ranging from very good to difficult.
Visibility	Ranging from very good to limited.
Paths and roads	Developed network of paths and forest roads.

WUOC 2016 Sprint Mixed Relay	
Land form	Flat urban area between 125-135 ms asl.
Vegetation	Urban area with a few small parks.
Runnability	Excellent.
Visibility	Excellent.
Paths and roads	100% urban area.

WUOC 2016 Middle and Relay	
Land form	Located 600-875 ms a.s.l. Moderately steep to steep hills up to 60 ms height. Some negative land forms. Many point features (lime burning places, charcoal burning places, pits, knolls). Many stones, rocky areas.
Vegetation	80-90% forested (mixed beech and pine forest), 10-20% open area with scattered vegetation. Some undergrowth in places. Dry underfoot.
Runnability	Ranging from very good to very difficult.
Visibility	Ranging from very good to very limited.
Paths and roads	Developed network of paths and forest roads.

14. Punching and Time-keeping System

SPORTident punching will be used on all events.

15. Clothing

There are no regulations applying to runners concerning the type of clothing they choose to wear but organisers recommend to use long trousers for the forest events.

It is forbidden to use shoes with spikes in the Sprint and Sprint Mixed Relay competitions.

16. Training Opportunities and Training Maps

For all training in Bükk National Park, permission has to be obtained from the authorities. Organising a training without this permission is not allowed. All contact with authorities must be made through Ms. Száva Zsigmond at least 3 weeks before the planned trainings. E-mail: office@wuoc2016.hu

Due to the hunting season, the training areas of WUOC 2016 are closed for orienteers in the early part of autumn. Therefore no orienteering activities can be carried out in any of the training areas between September 1st - October 19th 2015.

Maps can be purchased offset-printed and laser-printed. It is also possible to order the maps through e-mail in JPEG/GIF format. The map files can therefore be used for course planning, and maps with courses can then be printed. Maps can also be bought in OCAD 9/10 format, but an amount has to be paid after each training session held on the map.

The following areas, also indicated on the embargoed areas map, have been designated as official training areas for teams participating in WUOC 2016. The maps are surveyed and partially drawn between 2009 and 2015 by the WUOC map-makers.

Nr.	Area/Relevant	Previous O-map (latest edition)
1.	Olasz-kapu (middle / relay)	2012
2.	Huta-bérc (middle / relay)	2012
3.	Bánkút (middle / relay)	2012
4.	Létrás (middle / relay)	2009
5.	Hollóstető (middle / relay)	2009
6.	Lófő-tisztás (middle / long)	2014
7.	Nagy-kőmázsa (long)	2014
8.	Csókás (middle / long)	2015 – available after 25 October
9.	Válint-kereszt (middle / long)	2015 – available after 25 October
10.	Downtown East	2012
11.	Tapolca (sprints)	2014
12.	Miskolci Egyetem (sprints)	2016 – available after 23 April 2016

In all the training forests, a number of areas have been designated as out of bounds. It is very important that these areas are respected and kept clear of all training. The areas are marked on the maps.

All controls set out in the training areas must be labelled with the name of the group and the dates when the controls are put out and will be removed.

Prices:

Offset-printed/Laser printed maps, per copy	3 EUR
Offset-printed/Laser printed maps with controls, per copy	5 EUR
Map files in JPEG format, per map	100 EUR

All enquiries about training opportunities should be addressed to:

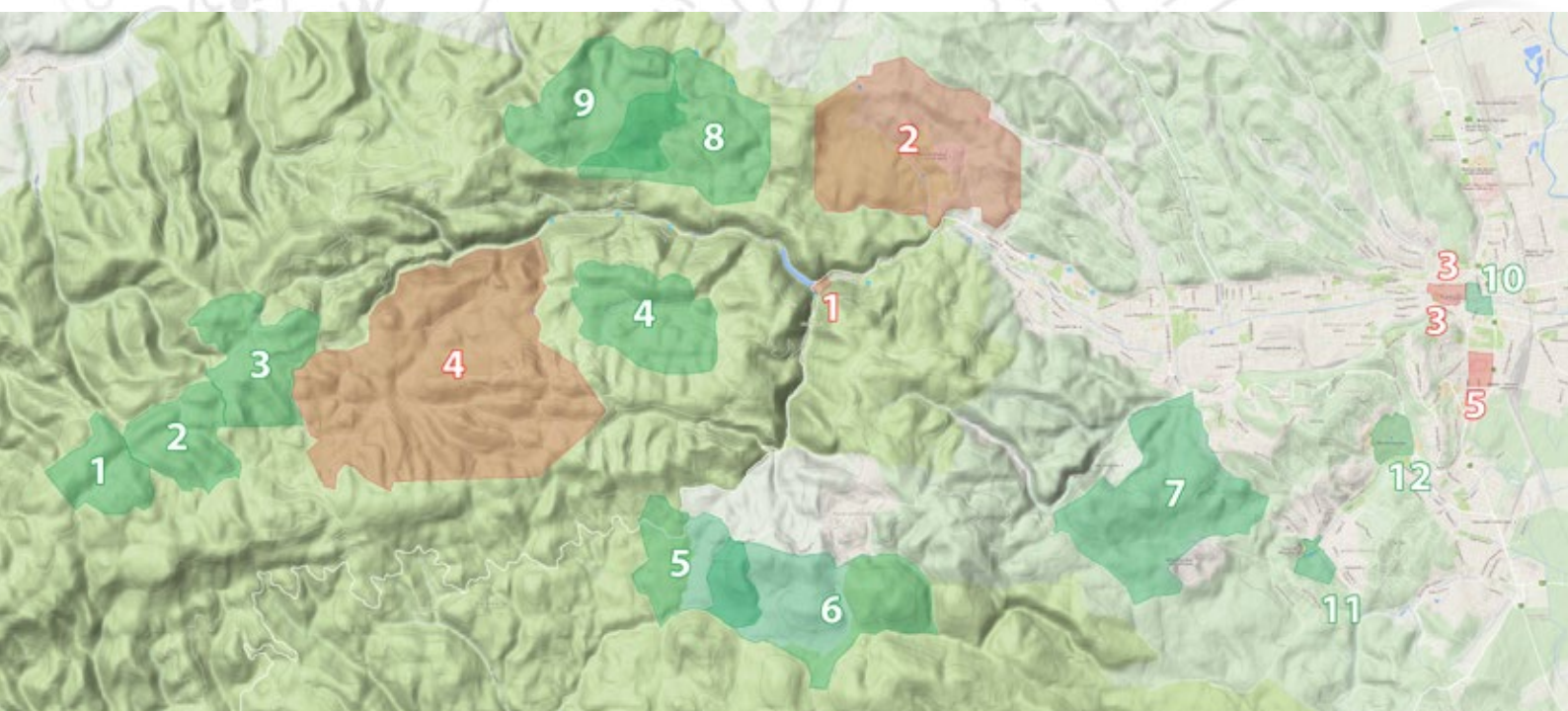
Ms. Száva ZSIGMOND - e-mail: office@wuoc2016.hu

Please also have an eye on the website wuoc2016.hu for updated information about the training arrangements, facilities and maps.

Recommended O-events for WUOC 2016:

5 September 2015	Less Nándor Memorial
6 September 2015	Borsod County Team Championship (sprint)
6 September 2015	Borsod County Sprint Championships
23 October 2015	Bükkfennsík Cup
24 October 2015	Hungarian Team Championships
25 October 2015	Hungarian Team Score Championships
23 April 2015	Hungarian University Championships in sprint
23 April 2015	Hungarian University Championships in relay
24 April 2015	Hungarian University Championships in long distance
June 2016	Borsod County Championships sprint, middle and long

Overview map:



17. Event Centre

For WUOC 2016 our aim is to create an Olympic village atmosphere in the University Campus in Miskolc. With fast and direct bus services, the centre of Miskolc - 5 kms away - can be reached in a short time.

The official Event Centre of WUOC 2016 will be in the Uni-Hotel, in the Campus of the University of Miskolc. The Campus provides high standard accommodation, good enough and large enough to accommodate all the WUOC 2016 participants during the World University Championships in a "WUOC Village" manner. The Campus is equipped with a complete set of meeting rooms and sports facilities which include gyms, swimming pool, athletics track, physiotherapy rooms and others.

The team officials' meetings will be held at the Event Centre.

18. Accommodation and Boarding

The accommodation and boarding for all WUOC 2016 participants will be situated at the Event Centre.

Athletes and officials will be accommodated in the Uni-Hotel (www.uni-hotel.hu/en), which is in the University area and was renovated and refurbished in 2007. Participants will be accommodated in twin double bed rooms (2 separate double bed rooms with common bathroom with shower) and in double rooms.

Full board is offered at the university restaurants for WUOC 2016 participants. On some days, due to the tight time schedule, lunch, including hot dishes, will be served at the finish arenas of the races.



19. Transportation

Organisers will arrange for all transportation during the WUOC.

Transport of participants, who will not arrive by own cars, will be organised on request from the airports (Budapest, Debrecen), railway and bus station (Miskolc).

20. Local Weather Conditions

During the WUOC	Average	Maximum	Minimum
Temperature	20	26,5	13,6
Precipitation	60 mm	Yearly average: 554 mm	
Sunshine	254 hrs	Yearly average: 1766 hrs	

Source: Hungarian Meteorological Service

21. Media

All media representatives are welcome to come and cover all the WUOC 2016 events. Media services and facilities will be provided at the event centre at Miskolc. Media representatives and any extra representatives of the Federations are requested to register by contacting the Event organisation at office@wuoc2016.hu

22. Public Event – WUOC Tour - Hungária Cup 2016

A five-day public orienteering event will be organised during the WUOC 2016. The same competition areas and maps will be used as for WUOC 2016. The programme of WUOC Tour - Hungária Cup 2016 will enable participants to witness each and every WUOC medal decision.

Programme:

- Saturday, 30th July - Middle Distance
- Sunday, 31st July – Sprint, just after the WUOC Sprint, competition area will be the same
- Monday, 1st August – Long Distance, just after the WUOC Long Distance competition, competition area will be the same
- Tuesday, 2nd August – Middle Distance, very detailed middle distance, just 15 minutes drive from the EC. Sprint relay in downtown in the afternoon.
- Wednesday, 3rd August – Middle Distance with chasing start, just after the WUOC Middle Distance competition, competition area will be the same
- (Thursday, 4th August – extra opportunity to run the WUOC relay courses after the WUOC relay – results don't count for WUOC Tour - Hungária Cup 2016 overall)

22. Additional Information

You can find more information on the WUOC 2016 website: wuoc2016.hu or by e-mail office@wuoc2016.hu

Bulletins to follow:

- Bulletin No. 2. – November 2015
- Bulletin No. 3. – April 2016
- Final Bulletin - July 2016



Partners



MISKOLCI
EGYETEM



Contact

WUOC 2016 Organising Committee

3515 Miskolc-Egyetemváros,
Körcsarnok

e-mail: office@wouc2016.hu

Web: wouc2016.hu



Welcome to Miskolc and WUOC 2016!