

## BULLETIN N°1

The Midi-Pyrénées regional orienteering association is pleased to welcome you to O'France 2016. Day 3 is a world ranking event.

Event information is available via the O'France 2016 website : <http://www.o-france.fr/2016-foot/>

Page 1 / 5

### « ORGANISATION »

Organiser: Ligue Midi-Pyrénées regional orienteering association

Event directors: Jean-Louis BLEIN and Isabelle CHAMPTIAUX

Event centre: L'Hospitalet du Larzac

	Day 1	Day 2	Day 3 (WRE)	Day 4	Day 5
Course planner	Isabelle Champtiaux	Philippe Bailly	Sébastien Mena	André Sylla	Ludovic Ruiz
Controller	Eric Mermin	Jean-Claude Pereira	Philippe Pogu	Jean-Claude Pereira	Philippe Pogu Daniel Podrêas (trainee)
FFCO advisor	Denis Genevès	Denis Genevès	Denis Genevès	Denis Genevès	Denis Genevès
Event referee	Johann Lasouche	Johann Lasouche	Serge Blasco Hors WRE	Serge Blasco	Serge Blasco
IOF event advisor			Philippe Pogu		

### « PROGRAMME »

O' France 2016			
Date		Location	Format
09/07/16	Registration	L'Hospitalet du Larzac	
10/07/16	Prologue	La Couvertorade	Sprint
11/07/16	Day 1	Le Figayrol (Cornus)	Long distance
12/07/16	Day 2	Le Figayrol (Cornus)	Long distance
13/07/16	Day 3	Le Figayrol (Cornus)	Middle distance - WRE
14/07/16	Rest day	-	-
15/07/16	Day 4	Le Guilhaumard	Long distance
16/07/16	Day 5	Le Guilhaumard	Middle distance



LIGUE MIDI-PYRÉNÉES  
DE COURSE D'ORIENTATION



Courses and age classes: as per FFCO event rules 2016 and as per IOF rules for Day 3 H21E and D21E (WRE).



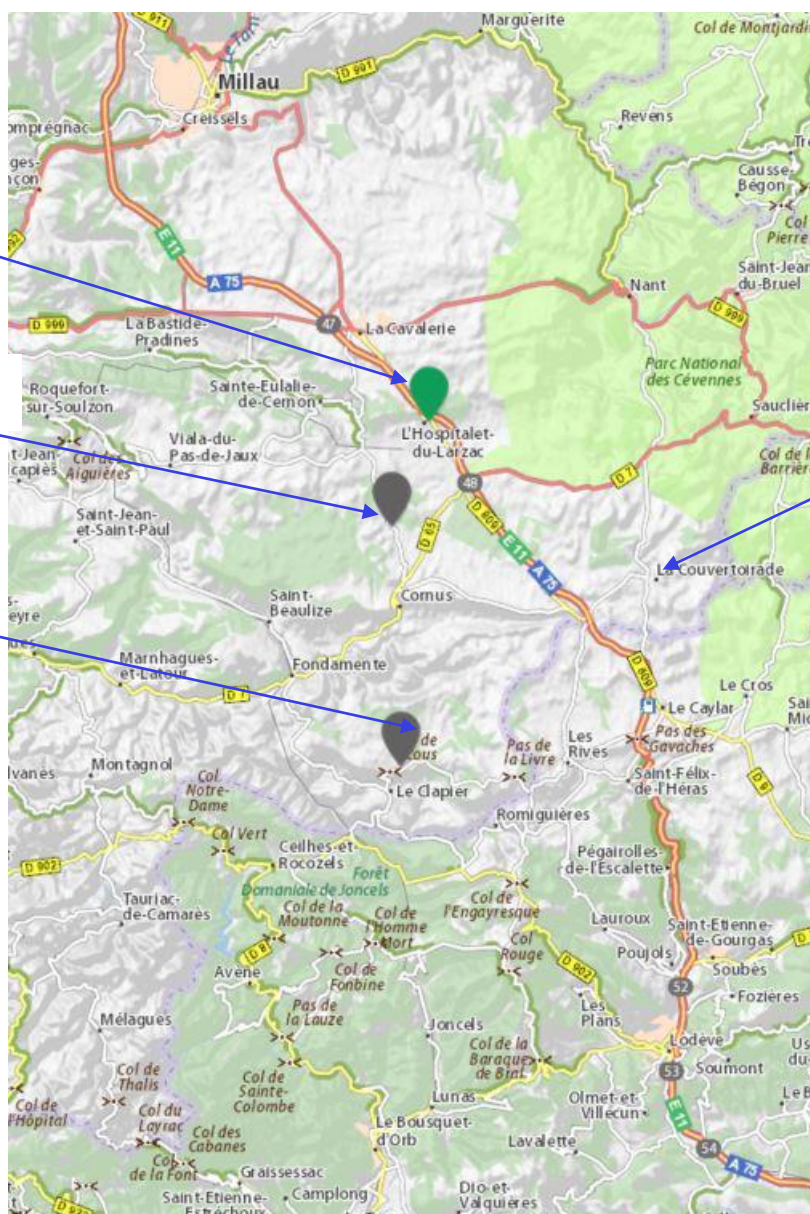
## « ACCESS »

Event center

E1, E2, E3

E4, E5

Prologue



By road: A75 motorway, exit 48

By train: nearest railway stations Millau (35 min away) or Montpellier (1h15 away)

By plane: nearest airports Montpellier (110 km), Nîmes (160 km), Toulouse (200 km), Carcassonne (200 km)

The organisers will not provide transport for competitors

## « TECHNICAL INFORMATION »

Maps:

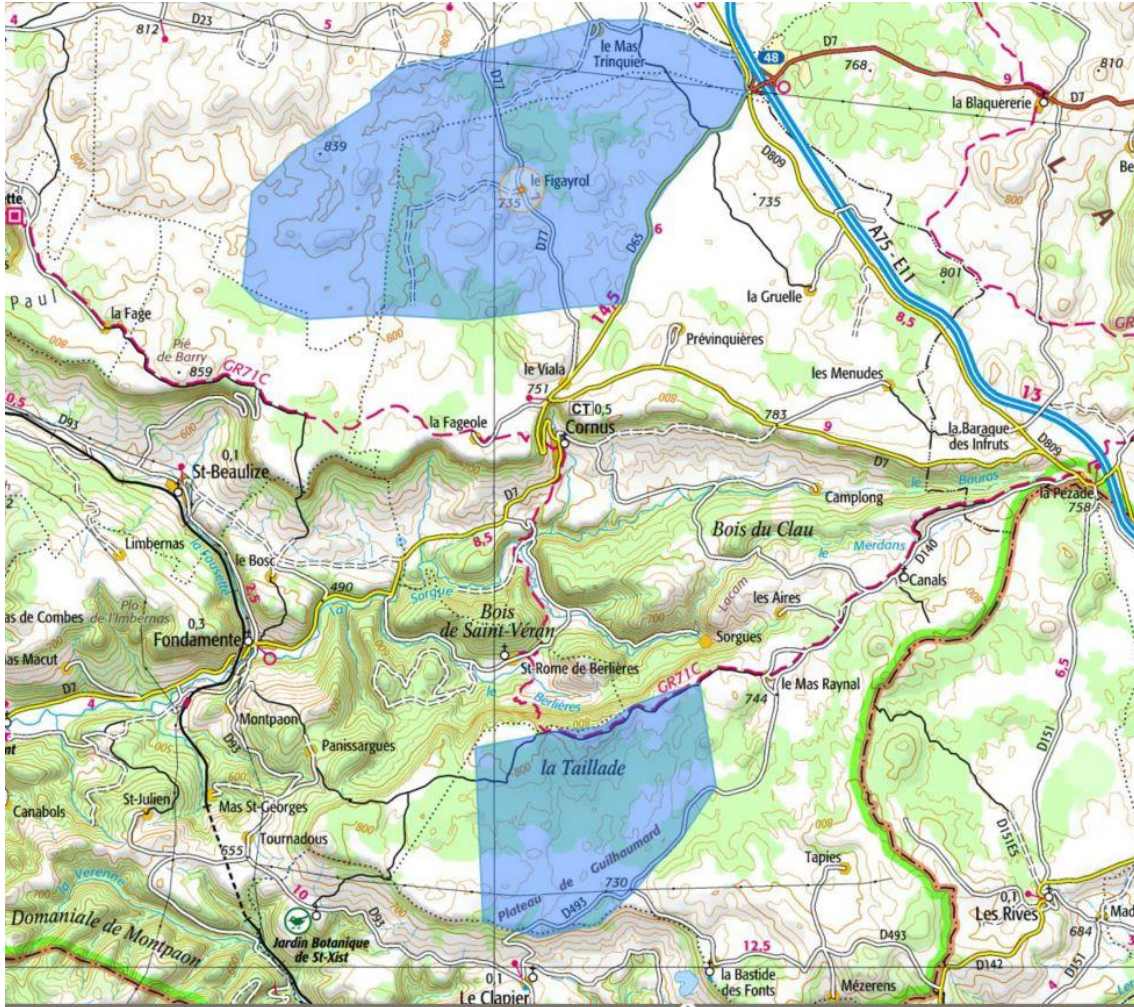
Le Figayrol – scale 1:10000 – Cartographer I. I. ROSCA DIONISIE

Le Guilhaumard – scale 1:7500 - Cartographer Arcanis (Anghel, Cortita, Rosca) ; Mise à jour I. I. ROSCA DIONISIE



**Terrain:**

Limestone plateau with detailed rock and contour features, boxwood vegetation and wooded areas.

**Embargoed areas****WRE format**

Middle distance. Estimated winning time 35 minutes for D21E and H21E

**Weather and climate**

Weather forecast: <http://www.meteofrance.com/previsions-meteo-france/cornus/12540>

Climate: plateau situated at between 600 and 900 metres altitude, a mixture of mountain and mediterranean climate. Temperatures can be very high in summer.

**Training**

A network of controls on a training area will be available throughout the week beginning 9th July 2016. Maps will be on sale at the event centre.

**« ACCOMODATION »**

Consult the O'France website <http://www.o-france.fr/2016-foot/information/accommodation/>

## « ENTRIES »

Last deadline : 31/05/2016

## Entry fees

Entry fees				
	Up to 31/01/2016	Up to 31/03/2016	Up to 30/05/2016	After 30/05/16
	Reduced fee	Reduced fee	Standard entry fee	Late entry fee
Born 2002 or later (aged 14 and under)	10 €	12 €	14 €	28 €
Born between 1998 and 2001 (aged 15 to 18)	12 €	14 €	16 €	32 €
Born before 1998 (aged 19 and over)	16 €	18 €	20 €	40 €

Prologue entry fee				
	Up to 31/01/2016	Up to 31/03/2016	Up to 30/05/2016	After 30/05/16
	Reduced fee	Reduced fee	Standard entry fee	Late entry fee
Born 2002 or later (aged 14 and under)	3 €	4 €	6 €	12 €
Born between 1998 and 2001 (aged 15 to 18)	4 €	6 €	8 €	16 €
Born before 1998 (aged 19 and over)	6 €	8 €	10 €	20 €

Entries: via Orienteeringonline.net

The various age classes are listed on the site, including novice classes

Prologue: <http://www.orienteingonline.net/CompetitionBasicInfo.aspx?CompetitionID=2367>O'France: <http://www.orienteingonline.net/CompetitionBasicInfo.aspx?CompetitionID=2265>

Day 3 – WRE: When entering via the Orienteering Online website, elite competitors must give their IOF number for day 3. If you don't have an IOF number, please first register with the IOF website in order to obtain one.

## « FORMALITIES »



For information on visa applications please visit the government website for foreign visitors  
<http://www.diplomatie.gouv.fr/fr/venir-en-france/formalites-d-entree-en-france>

Page 5 / 5

« **CONTACT** »

O'FRANCE 2016 : [contact2016-foot@o-france.fr](mailto:contact2016-foot@o-france.fr)

