

EUROPEAN JUNIOR AND YOUTH MTB ORIENTEERING CHAMPIONSHIPS 2022

EUROPEAN MTB ORIENTEERING CHAMPIONSHIPS 2022

MTB ORIENTEERING WORLD CUP ROUND 1

Ignalina, Lithuania
18-22 May 2022

BULLETIN 2



Welcome!

Lithuanian Orienteering Federation is excited to welcome the participants of the European Junior, Youth and Elite MTB Orienteering Championships and MTB Orienteering World Cup on the 18-22nd May 2022 in Ignalina.

1. Organization

ORGANISERS

Lithuanian Orienteering Federation
Ignalina District Municipality
MTBO Renginiai

European MTBO Championships and MTBO World Cup are organised under the authority of the International Orienteering Federation (IOF)

ORGANISING TEAM

Event Director:	Roma Puišienė
Competitions director:	Jurgis Rubaževičius
Event Support:	Vilius Aleliūnas
Event Office:	Giedrė Rubaževičienė
Maps & Courses:	Martins Lasmanis Ramunė Arlauskienė

EVENT ADVISORS

IOF Senior Event Adviser:	Milan Meier (CZE)
National controllers:	Vitalijus Paulauskas (LTU)

CONTACTS

Phone:	+370 670 99997
Email:	info@mtbo.lt
Website:	www.emtboc2022.lt
Facebook:	www.facebook.com/emtboc

2. Event Programme

Date	
Wednesday, May 18	Team Arrivals, Model event
Thursday, May 19	MIDDLE distance for EJYMTBOC, Opening ceremony
Friday, May 20	SPRINT (all categories)
Saturday, May 21	LONG distance (all categories)
Sunday, May 22	RELAY for EJYMTBOC, MIXED RELAY for EMTBOC Closing ceremony and Departure

Programme is preliminary.

3. Rules and regulations

Competition Rules For International Orienteering Federation (IOF) Mountain Bike Orienteering (MTBO) Events (Rules for the World Cup in MTB Orienteering) apply.

Off-track riding is allowed.

All controls will be situated on paths, tracks or paved areas.

SPORTident Si-Air contactless long-range punching system will be used. The competitors may use their own cards (**SIAC only!**).

4. Venue

European MTB Orienteering Championships 2022 will take place in Ignalina, a town surrounded by lakes and lovely landscape in Eastern part of Lithuania.

It's a small town with only around 5000 people living there, nevertheless, it is a key tourist destination of the Aukštaitija National Park all year round. However it is most popular during summer season, as a lot a lot of tourists come to visit Aukštaitija national park for canoeing, hiking and biking activities. In winter, due to it's favourable geographical location and recently built Winter Sports Centre, Ignalina becomes top destination for all kind of winter activities - cross-country, downhill skiing, biathlon and many more.

Ignalina is also well known due to Ignalina nuclear power plant that was build in a newly founded town (Visaginas) in 30km distance. With 4 reactors in action, it was designed as world's most powerful nuclear power station at that time. Chernobyl and Lithuania's independence resulted in closure of the station and dismantling of all 3 reactors that were built.

Ignalina is beloved by the tourists for its ability to satisfy the desires of its visitors to experience the nature and entrainment without sacrificing authenticity.



From Vilnius Airport - 126 km, 1:45 hours drive
 From Kaunas Airport - 157 km, 2:10 hours drive
 From Riga Airport - 265 km, 3:25 hours drive



IGNALINA



5. Event center (EC)

Winter Sports centre Lithuania

address: Sporto str. 3, Ignalina

website: <http://lzsc.lt/>

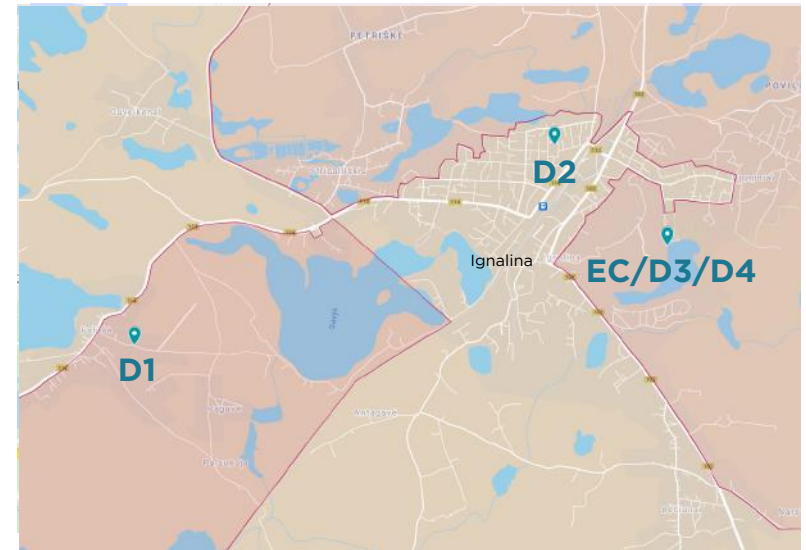


The Event Center will be site for the Event Office and Team leaders' meetings as well as main bike storage area. Long distance and Relay arenas will be located next to the Event Center

There is no accommodation capacity at the EC, however there are number of accommodation options nearby. More information in Accommodation section below.

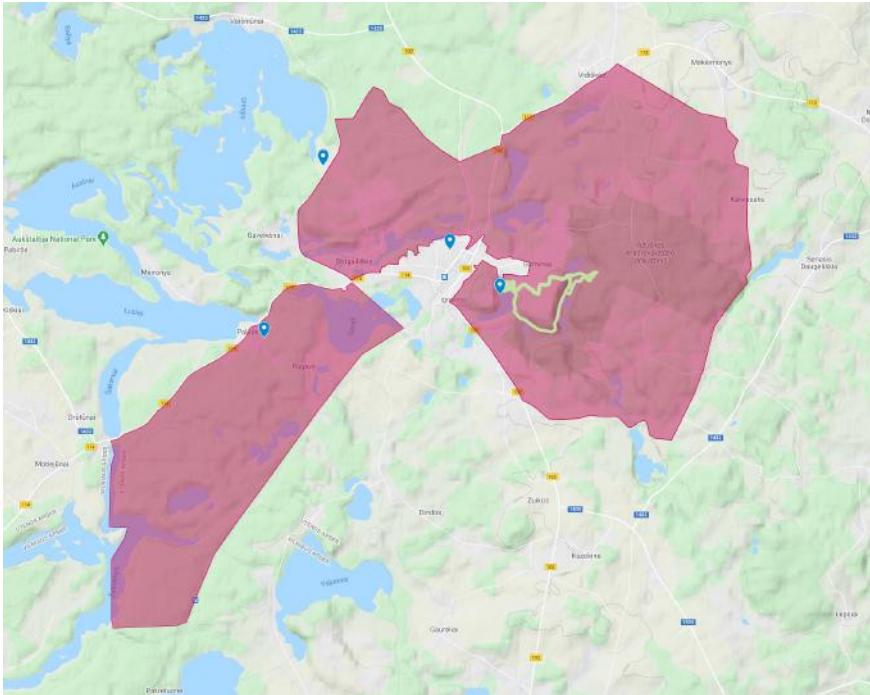
Distances to the Event Center:

- 6,7 km from the EJYMTBOC middle-distance arena (D1),
- 1,7 km from sprint distance arena and the town centre (D2),
- 0,0 km from the long distance and relay arena (D3/D4).



6. Embargoed Areas

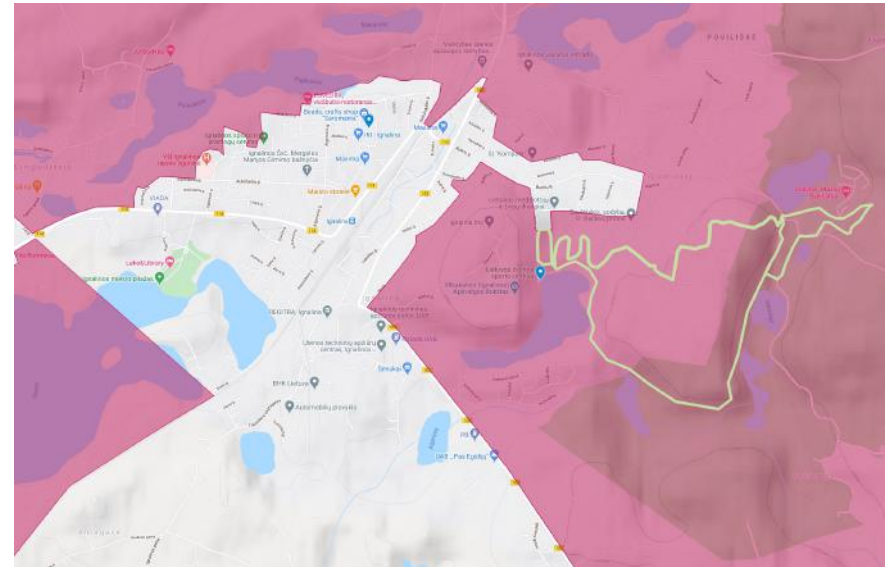
Below is an overview of the embargoed areas. Detailed maps of all embargoed areas can be found on the organizer's website www.emtboc2022.lt.



The areas marked on the map are embargoed for all orienteering activities, unless specifically permitted by the organiser. The embargoed areas are out of bounds for all potential participants and team members, including competitors, team leaders, coaches, doctors, escorts, and any other person with potential connection to a team (athletes or others). This means that all potential

participants and team members are not allowed to visit these areas with or without a map at all, regardless of whether it is an orienteering activity or a training session, a walk with the dog or a leisurely Sunday stroll.

The full embargo is also valid for the area marked in red in the city of Ignalina (see enlarged map below). So potential participants and team members (detailed definition see above) are not allowed to enter city center prior to May 18, 2022.



Biathlon loop, marked by the green line on the map can be visited on foot, skis or rollers without an orienteering map, but any orienteering or MTBO activity is restricted and it is strictly forbidden to ride a bike there.

7. Maps and Terrain description

Palūšė (Middle)

Map:	Scale 1:10 000, contours 2.5 m, Size - A3
Terrain form:	Mostly flat
Vegetation:	Coniferous and deciduous forest with dominating pine wood
Speed:	Mostly good and fast with some sandy roads which are typical in dry weather conditions
Visibility:	Good, but limited in dense areas
Paths and roads:	Average density forest roads and paths



[FULL MAP](#)

Ignalina (Sprint)

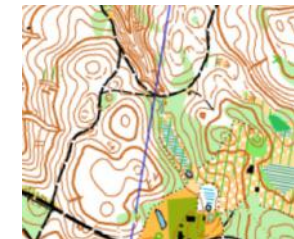
Map:	Scale 1:5 000, contours 2.5 m, Size - A4+
Terrain form:	Mostly gently sloping
Vegetation:	A mixture of park terrain, urban areas and forested areas (dominating pine wood)
Speed:	Most tracks are easy rideable
Visibility:	Mostly good
Paths and roads:	Urban areas and forested areas with a dense network of paths



[FULL MAP](#)

Ažušilė (Long)

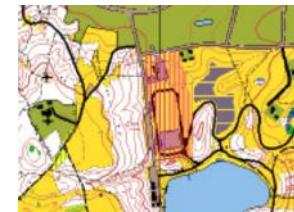
Map:	Scale 1:15 000, contours 5 m, Size - A3
Terrain form:	Hilly with few steep slopes.
Vegetation:	Coniferous and deciduous forest.
Speed:	Mostly good and fast on forest roads, but limited on single tracks
Visibility:	From good to very limited in dense areas
Paths and roads:	Average density network of paths and forest roads and areas with few paths and roads.



[FULL MAP](#)

Ignalina (Relay)

Map:	Scale 1:10 000, contours 5 m, Size - A4+
Terrain form:	Mostly flat with few steep slopes. Urban areas and forested areas
Vegetation:	Dominating deciduous forest
Speed:	Mostly good and fast
Visibility:	From good to very limited in dense areas
Paths and roads:	High density network of paths and roads on urban part of the map, and average density of forest roads and tracks



[FULL MAP](#)

8. Classes and Participation Restrictions

Classes

EMTBOC, World Cup - W21, M21

EYMTBOC - W17, M17

EJMTBOC - W20, M20

European MTB Orienteering Championships

World Cup

There is one class for women (W21) and one for men (M21). There are no age restrictions.

For the individual competitions each federation may enter a maximum of 6 riders in each class. The current European Champions and World Champions for each competition format shall be given a wild card in addition to the entries from her/his Federation.

For the Relay each Federation may enter 4 teams, each consisting of 3 riders. Only the best-performed team will qualify for the prize list. Incomplete relay teams may compete in the Relay but must start at least 15 minutes later than the official teams. Under no circumstances may persons other than entered competitors participate in the competition.

European Youth MTB Orienteering Championships

There is one class for women (W17) and one for men (M17) Only competitors who are born in 2005 or later are entitled to compete in these classes.

For the individual competitions each federation may enter a maximum of 6 riders in each class. The organising

Federation may have two additional competitors as official EYMTBOC competitors in the individual competitions.

For the Relay each Federation may enter a maximum of 2 teams, each consisting of 3 riders in each class.

European Junior MTB Orienteering Championships

There is one class for women (W20) and one for men (M20). Only competitors who are born in 2002 or later are entitled to compete in these classes.

For the individual competitions each federation may enter a maximum of 6 riders in each class. The organising Federation may have two additional competitors as official EJMTBOC competitors in the individual competitions.

For the Relay each Federation may enter a maximum of 2 teams, each consisting of 3 riders in each class.

Competitors representing member federations of the IOF, defined by the International Olympic Committee as belonging to the European continent can compete in the EMTBOC and EJYMTBOC. Competitors representing other member federations of the IOF can participate in the EMTBOC and EJYMTBOC but they will not be eligible for European titles, medals or diplomas.

PUBLIC RACES

Open competitions might be offered. More information in Bulletin 3.

9. Entries

All competitors may only be entered by their federation.

Entries are made in IOF Eventor, please see
<https://eventor.orienteering.org/Events/Show/6738>
<https://eventor.orienteering.org/Events/Show/6739>

Deadlines

TEAM SIZE DEADLINE: 17 March 2022, giving:

- country
- number of competitors for each class
- number of relay teams
- number of team officials
- team manager's name, address and telephone number
- Confirmation of payment of Accommodation, Meals and Transport Fees.

CONFIRMATION OF FULL PAYMENT OF ENTRY FEES

by **6 April 2022**

COMPETITION ENTRY DEADLINE: 7 May 2022, giving:

- each competitor's family name and first name, year of birth, gender and class,
- information on whether the athlete borrows an Si-AC card or uses his own, Own Si-AC card number,
- family name and first name of each team official(s),

After the team size deadline, additional entries may be made with a surcharge of 20% and withdrawals receive an 80% refund.

After the team names deadline, additional entries incur a surcharge of 50%, withdrawals receive a 50% refund, and name changes incur a 10 EUR fee.

Very late entries may be refused.

Fees and payments

Fees are in € and per person (except Relay)	EMTBOC	EJYMTBOC	Team officials
Sprint distance	54	30	-
Middle distance	-	30	-
Long distance	54	30	-
Relay (per team)	120	90	-
Accreditation/registration (each participant and official)	90	65	75

Please make your payment to:

IBAN:	LT63 7300 0101 4302 3967
Account holder:	VŠĮ „MTBO renginiai“
Company ID:	303981383
Address:	Vivulskio 7, Vilnius, Lithuania
SWIFT/BIC:	HABALT22
Bank:	SWEDBANK AB VILNIUS

Charges and bank fees are to be paid by the sender/payer. Late payments are subject to the same surcharge as late entries. Competitors or teams may be excluded if their entry fee is not paid till Competition Entry Deadline

10. Accommodation and Catering

There is a limited accommodation spaces within the city of Ignalina, therefore organizers have an agreement with most of them and will assist in finding the best option for your team and arranging the required services. We do strongly recommend booking accommodation as early as possible.

Option A - HOTEL

There are several small hotels in the area, with typically double occupancy rooms. Most of them have restaurants, so breakfast/half or full board is available. Average price per person/per night 30 EUR.

Option B - HOMESTEAD

There are many local agricultural tourism homesteads run by individual owners located in the area. Usually located at the lakeside they provide more space and extra features (kitchen, BBQ, sauna, etc.), but not all of them provide catering services. Average price per person/night is 15 EUR.

BOOKING DEADLINES

Please fill the accommodation booking [form](#) indicating your accommodation and catering preferences and we will contact you with available options and details.

Deadline for a booking is **January 31, 2022**.

After this deadline participants will have the only option - booking directly with accommodation providers.

Deadline for payment of accommodation price is **February 15, 2022**.

CATERING

Breakfast is offered by the most offered accommodations or restaurants/hotels nearby. Price will depend on the hotels/agritourism homesteads and will be quoted during the booking.

Some of the offered hotels have restaurants, that can serve also guests from other accommodations - we do have preliminary agreements, so various dinner options can be agreed if required.

Hot meal freshly served from the mobile kitchen will be available every day at Race Arenas **only on pre-order basis**.

Menu options and meals could be adjusted to your wishes, so please indicate your catering preference and requirements in the accommodation booking form.

BOOKING FORM

Click on link below or scan the QR code with your smartphone to access the form:

<https://tinyurl.com/hdwzt7fe>



11. Travel information

TRANSPORT TO / FROM IGNALINA

Ignalina is in a driving distance from Vilnius, Kaunas or Riga international airports, so the most convenient way is to rent a car in one of these airports.

If you don't have rental car, transport from Vilnius airport or from Vilnius railway station to Ignalina is possible by Coach or by Train (see "Useful Links" below). Railway station and Coach terminal are located close to the city centre.

Event center is located approx. 1,7 km from city centre, accessible by private car, taxi, bike or on foot.

Event office can assist in organizing transfer service from/to Vilnius, Kaunas or Riga airports to Ignalina.

TRANSPORT TO/FROM THE EVENTS

All events are accessible by bike:

- EC -> Middle competition arena: 6,7 km
- EC -> Sprint competition arena: 1,7 km
- EC -> Long competition and relay arena: 0,0 km

- City -> Middle competition arena: 5,3 km
- City -> Sprint competition arena: 0 km
- City -> Long competition and relay arena: 1,7 km

VISAS

Lithuania is a full Schengen member state. The following IOF full member countries that require a visa entering Lithuania are: Belarus, China, Colombia, Kazakhstan, Moldova, Mongolia, Russia, South Africa and Turkey.

Application for the visas should be submitted at the nearest Lithuanian embassy. The organizers will assist participants in the process of obtaining visas.

Please make sure that you allow for sufficient time (at least 3 months) for invitation letters and visa processing.

Please note that visa regulations are subject to change. Please double-check your specific visa requirements.

COVID-19 RELATED INFORMATION

Please check the most recent immunization and testing requirements for entry to the Republic of Lithuania from your country as well as requirements of your flight operator.

Please contact organisers if you need carry COVID-19 testing for the re-entry of your country - we will be happy to assist in finding you the best option.

reopen.europa.eu

[National public health center - Ministry of Health](#)

12. Opportunities for training

Prior to the EMTBOC and EJYMTBOC

The official training camp will be organized in Vilnius, in early spring 2022, in the areas closely resembling the terrains of the EMTBOC and EJYMTBOC championships

Official training

Controls (with no SI boxes) will be placed in the training area from 12am to 4pm on Wednesday, May 18 (SI boxes will be set from 2 pm). Maps will be available at the event office at cost of 5 EUR / map. No registration is needed.

Model event

Model event will be organized on Wednesday, May 18 between 2pm and 4pm, using the controls of the training. 2pm is the start of the Model Event with free start times.

13. Other Information

LOCAL WEATHER CONDITIONS

The end of May in Lithuania is usually pleasant and warm with temperatures ranging from +17°C to +25°C . However rainy days are not unusual.

MEDIA

We welcome all media representatives to the European MTBO Championships 2022. For media accreditation and more information please contact us on info@mtbo.lt

14. Useful Links

Orienteering Federation Lithuania - orienteering.lt

Official Lithuanian O-maps database - dbsportas.lt/en/
(click the Maps checkbox on layers menu in the right)

Interactive Lithuanian O-Maps database - trails.lt

Ignalina county website - ignalina.lt

Ignalina tourist information - ignalina.info

Aukštaitijos National Park website - aparkai.lt

Lithuania visitor info - welovelithuania.com

Vilnius airport website - vilnius-airport.lt

Kaunas airport website - kaunas-airport.lt

Riga airport website - riga-airport.com

Lithuania Railway tickets- traukiniobilietas.lt

Intercity coach tickets- autobusubilietai.lt



IGNALINA