

-middle distance-

The 10th Japan Orienteering Championships 2021

-long distance-

The 48th Japan Orienteering Championships 2021

IOF World Ranking Event / M21E & W21E

October 23/24, 2021

Note: There are Non-World Ranking Event classes in this competition. The information of those classes is published in the bulletin for Japanese. If you need the information in English, please email us.

Venue/Event Center	BLANCHE TAKAYAMA Ski Resort
Address	Daimon Takayama, Nagawa-machi, Nagano-Pref, 386-0601, Japan
Google map	https://goo.gl/maps/3DrwCp59JHJXhhtw5
Event Organizer	Japan Orienteering Association
IOF Event Adviser	Norihisa FUJII
Event Director	Saho KUME
Event Secretary	Yu TANAKA
Technical Director	Yutaro MIYANISHI
Course Planner (middle)	Ryosuke NISHISHITA
Course Planner (long)	Go INAMORI

1. General Information

■ Access to the event venue

By car

30 minutes from Okaya IC (Nagano Expressway)

50 minutes from Suwa-Minami IC (Chuo Expressway)

55 minutes from Saku-Minami IC (Chubu Oudan Expressway)

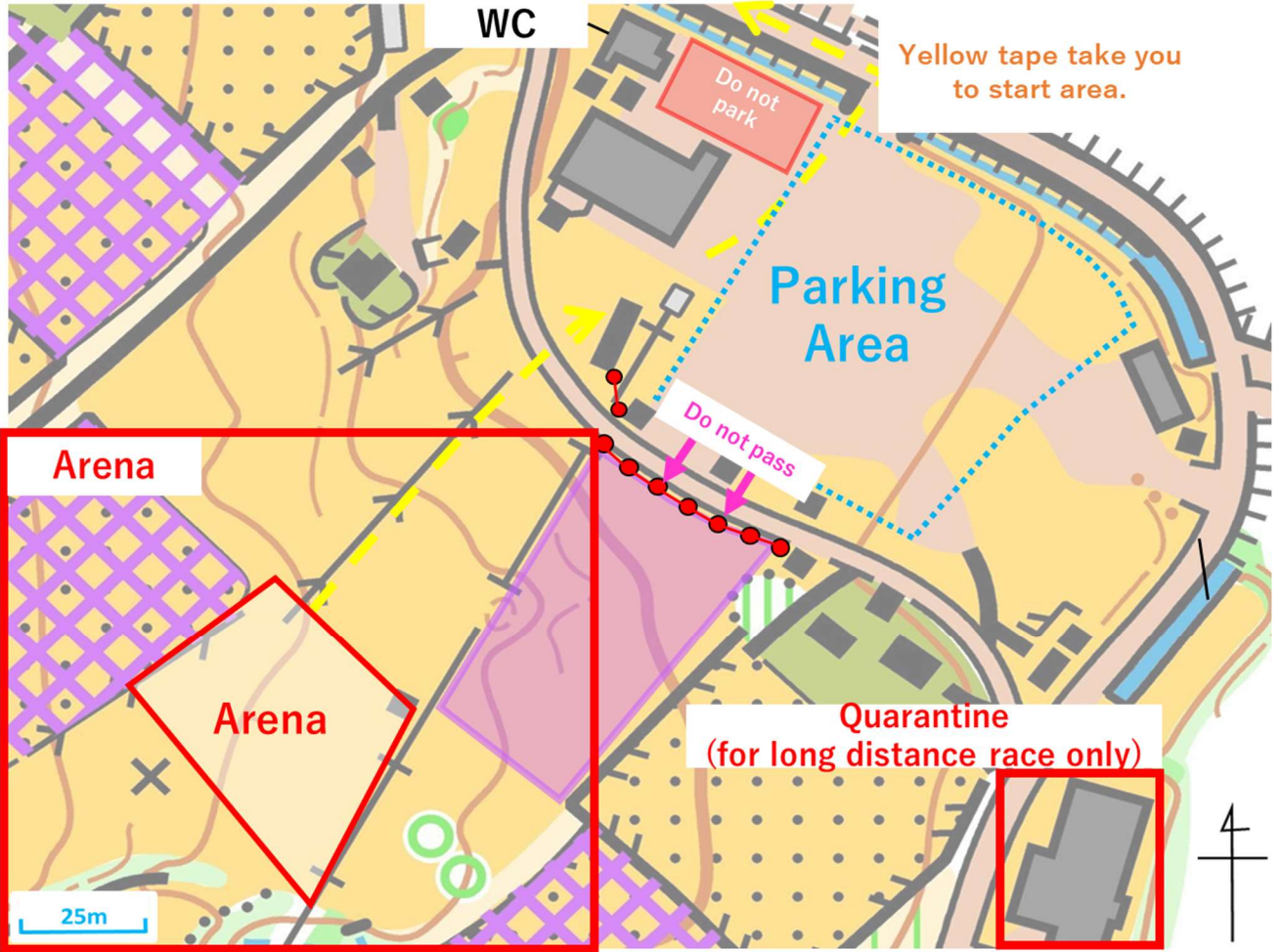
Note: Visits by car is strongly recommended.

By train

The nearest station is Chino station (Chuo Line, JR-EAST)

The organizer plan to provide a bus from Chino Station to the venue. The information will be published in the bulletin for Japanese by the end of July. If you need the information in English, please email us.

■ Arena



2. Competition Information

■ Rules

Japan Orienteering Association rules and IOF rules apply on WRE class.

Start lists are based on Japan Ranking Event ranking instead of WRE ranking.

■ General information

	Oct. 23	Oct. 24
Race	Middle Distance	Long Distance
Event Center Opens	8:00	7:00
Quarantine deadline	-	10:00
First Strat	10:54	9:34
Prize Ceremony	13:50~	13:20~
Finish close	15:00	15:00

■ Quarantine (long distance race only)

After 10:00 a.m., competitors in the championship class are not allowed to enter any area other than the quarantine and start. Competitors running after 10:00 a.m. must go to the waiting area by themselves and register for entry. No one is allowed to return to the venue, luggage storage area, or parking lot after 10:00. If your start time is before 9:59, you may go directly to the start area without entering the quarantine.

You may bring your luggage to the quarantine. It is possible to leave your luggage at the quarantine and go out for the race. However, re-entry to the waiting area after the start is permitted only after the start closing time. Please come back to the quarantine after the closing time of the start to pick up your left luggage.

The use of any communication devices is prohibited from the time you enter the quarantine until the start of the race.

There are a clear station and a check station at the quarantine. There are toilets, male and female changing rooms, and a space for eating and drinking in the waiting area.

■ Race information

	Oct. 23 Middle distance	Oct. 24 Long distance
Start interval	2 minutes	2 minutes

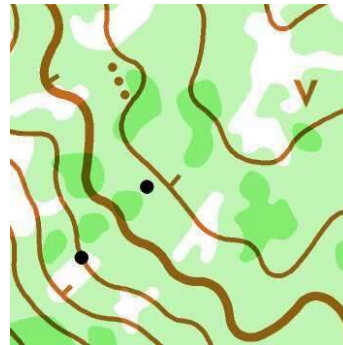
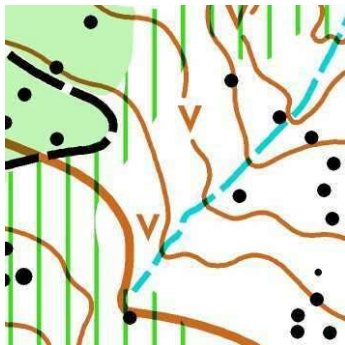
Scale	1:10000	1:15000
Contour interval	5m	
Specification	ISOM2017-2	
Map	no relevant old map available	
Special Symbol	○ : Charcoal kiln ruins × : Conspicuous sign † : Cemetery	
Punching system	SPORTident system (SI-card)	

For the long distance race, the course is printed on the reverse side, and the last control on the first map corresponds to the start of the second map.

■ Terrain information

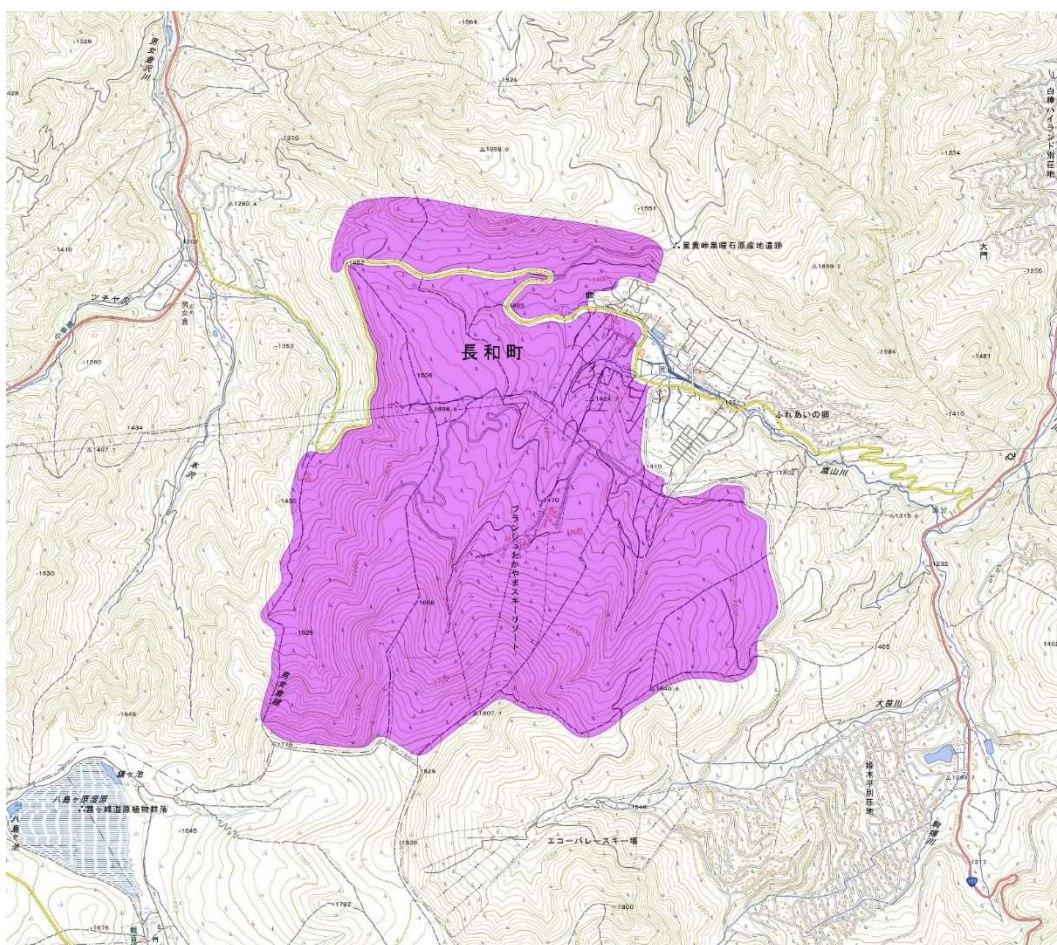
This terrain is located at an altitude of about 1350 to 1750 meters above sea level and consists of the Blanche Takayama Ski Resort and the surrounding mountain forest. Forest (A) (405) has very good visibility. Main competition area has few roads and paths, but in some areas, there are many roads for forestry work. Across the roadway, the terrain is higher on the south side in the south and higher on the north side in the north. The slope is generally gentle, but steep at the west end of the terrain. There are few complex terrains. Holes and rocks are scattered. Few marshes, rivers and ponds.

■ Sample maps



■ Embargoed area

According to the IOF Competition rules (§ 26.5), embargoed areas are forbidden for all competitors.



■ **Class (World Ranking Event)**

W21E and M21E are the classes for World Ranking Event.

	Oct. 23 Middle Distance			Oct. 24 Long Distance		
Class	Length	Climb	Winning time	Length	Climb	Winning time
W21E	4.4km	135m	35 minutes	9.7km	425m	80 minutes
M21E	5.5km	195m	35 minutes	14.4km	630m	95 minutes

Maximum running time is 90 minutes for the middle distance race and 180 minutes for the long distance race.

Walking time to starts are 20 min for the middle distance race and 25 min for the long distance race. Yellow tape take you to the start area.

■ **Climate and Hazards**

Average value over the past 30 years are as follows.

The observation point: Tateshina (Elevation: 715m)

average temperature (°C)	10.1
--------------------------	------

maximum temperature (°C)	16.3
minimum temperature (°C)	5.0

Ticks have been found in the terrain. It is recommended to wear long sleeves and long pants. We also recommend the use of insect repellents containing DEET.

■ **Clothing and shoes**

There are no regulations regarding clothing and shoes. However, we recommend to wear long sleeves and long pants.

Only GPS (GNSS) equipment without image display is allowed to be used.

■ **Control descriptions**

Control descriptions are in accordance with the IOF standard. The control descriptions will be available in the start corridor. The control descriptions are also printed on the competition maps. Maximum size 200x60mm for the middle distance race and 235x60mm for the long distance.

■ **Complaints and Protests**

A complaint must be made in writing as soon as possible and given to the Event Office. There is no fee for a complaint. Complaints concerning results must be made no later than 60 minutes after finish closing.

A protest may be made against the organizer's decision about a complaint. Any protest must be made in writing to the Event Office no later than 15 minutes after the organizer has informed the complainant of the decision about the complaint. There is no fee for a protest.

■ **Jury**

Oct. 23	Oct. 24
Middle distance	Long distance

3. Other information

■ **Visa**

Please ask your nearest Japanese Embassy for further details or visit following URL for latest information.

http://www.mofa.go.jp/j_info/visit/visa/

■ **Accommodation**

There are many wonderful dormitories and hotels in Nagawa-machi. Please check following URL.

http://www.c-trail.com/navi_stay/

Note: Sorry for the lack of English information. If you click on the image of each accommodation, you can get information from their websites.

■ **Transportation**

If you need support about transportation, please ask our contact.

e-mail: ajoc@orienteering.or.jp

■ **Web site/SNS**

Web site: <http://www.orienteering.or.jp/joc/2021/>

Twitter: <https://twitter.com/orienteeringJOC>

Instagram: <https://www.instagram.com/orienteeringjoc/>

■ **Contact Details**

Person: Saho Kume

e-mail: ajoc@orienteering.or.jp

Tel (Just only emergency) : 090-3100-9510

Contact person about VISA: Kimiya OCHIAI (ochiai.kimiya@gmail.com)