



Bulletin #2

World MTB Orienteering Championships Junior World MTB Orienteering Championships



Falun Sweden
July 15-20 2022



Invitation

Dear friends,

On behalf of the Swedish Orienteering Federation we invite all IOF federations to take part in the World Mountain Bike Orienteering Championships and Junior World Mountain Bike Orienteering Championships 2022 in Falun and Säter in the beautiful region of Dalarna, Sweden.

We want to give the participants challenging competitions in varying terrain types. The event centre is situated at the sports complex Lugnet in Falun, which is Sweden's national cross-country skiing and ski jumping centre. 60 different sports can be practised there and it has become a major centre for mountain biking in recent years.

The middle distance and relay races will be held in Säter in a mostly open pine forest with a network of fast cyclable trails. The sprint race in Falun offers fast route choices through a varied urban, park and wooded area. The long distance and mass start races, also in Falun, will be in challenging hilly terrain with lots of route choices on tracks of very varying character.

I wish you all welcome to Sweden and good luck!



Jannike Wåhlberg, Event Director WMTBOC 2022 Falun

Contact information

Organizers

IOF

www.orienteering.sport

SOFT - Svenska Oriente-
ringsförbundet

www.svenskorientering.se

OK Kåre, Falun

okkare.se

Säterbygdens OK, Säter

www.saterbygden.se

Event Director

Jannike Wåhlberg

info@wmtboc2022.se

+46 70 – 688 86 34

IOF Senior Event Adviser

Vera Parizkova, CZE

Competition Director

Sprint, Mass start, Long
distances

Jannike Wåhlberg

Competition Director

Middle, Relay distances

Per Sandberg

per.sandberg@wmtboc2022.se

+46 70 6404673

Information

info@wmtboc2022.se

wmtboc2022.se

Technical Director

Steven Hale

steven.hale@wmtboc2022.se

+46 76 8444030

Venues

Event Centre and athletes village Falun. Distance to the races in Mora by, Säter is 40 km. The races in Falun will all be within 5 km of the Event Centre.

The Event Centre will be located at Lugnet in Falun.

Lugnet is one of Europe's most complete sports facilities and is located in the eastern part of Falun.

In the early 1970s, Lugnet's sports part started to be built and the area and the facility have since been purposefully developed. In the early 1970s, Lugnet's sports part started to be built and the area and the facility have since been purposefully

developed. Lugnet has hosted the World Ski Championships 1954, 1974, 1993 and 2015. Lugnet has also hosted the O-ringen, EOC 2012 and, among other events, the Swedish Championships in MTB orienteering.



General map of the region

A complete facility

At Lugnet there is the national arena for cross-country skiing and ski jumping, ice stadium (ice rink and artificial frozen bandy court), swimming pool, the large sports hall (four floors 20x40 meters), athletics stadium, mountain bike arena, swimming pool, outdoor pool, gym, tennis arena, martial arts hall, floorball hall and athletics hall. At present, 60 of the Swedish Sports Confederation's 70 special federations can conduct their activities in the area. Falu municipality owns most of the facilities, but some are also run privately.

In the Lugnet area there is also a funicular, sports lab, Dalarna University, Lugnetgymnasiet, Scandic hotel, camping and various outdoor activities. Lugnet is an extremely complete facility where it is close to everything.

The Event Centre will be open between Tuesday 12th and Thursday 21st July 2022.

For more information on Lugnets Sports Arena and facilities, please visit:

<https://www.lugnet.se/lugnet/om-lugnet.html>

Competition Venues

Mora by, Säter is a small village located 40 km from the Event centre in the community of Säter. Two events will be held – middle distance and relay.

The terrain is sandy with pine trees, many tracks, heights and depressions. The Swedish MTBO Championships were held here in 2016 and also quite a few national events over the years.



Falun. In conjunction with the Event Centre three events will be held – long distance, sprint and mass start. The venues will be held close to the city of Falun.

The terrain is hilly with mainly pine trees, many tracks, also used for skiing in the winter-time. On the slower paths it is often rocks and roots. Big orienteering events have been held in the area and also high value MTB events.



Program

WMTBOC women's and men's classes are also included in the World Cup, U23 World Cup and Team World Cup as follows:

	Middle 15th July	Relay 16th July	Long 17th July	Sprint 19th July	Mass start 20th July
World Cup	x		x	x	x
U23 World Cup	x			x	x
Team World Cup		x			

WMTBOC

There is one class for women and one for men, without age restrictions.

In the Mass start, Middle distance, Long distance and the Sprint every Federation may enter up to 6 women and 6 men and, in addition, the current World Champions for the distance may be entered by their Federation.

In the Mass start, Middle distance and Sprint each Federation may enter up to a further 2 women and 2 men who qualify for the Women U23 and Men U23 classes respectively. No U23 classes are offered in the Long distance.

In the Relay, each Federation may enter up to two women's teams and two men's teams, each consisting of 3 team members.

JWMTBOC

There is one class for women and one for men. Only competitors who are entitled to compete in the classes W20 or M20 may participate.

In each competition every Federation may enter up to 6 women and 6 men.

In the Relay, each Federation may enter two women's teams and two men's teams, each consisting of 3 team members.

The Long distance and Sprint also count in the Young Guns World Series M20 and W20 (Junior) classes.

U23 World Cup

Women and men born 1999 or later are entitled to compete in the Women U23 and Men U23 classes respectively. They compete simultaneously in the WMTBOC Women's and Men's classes and are treated in all respects as competitors in those classes except that their results and scores are also listed separately in Women U23 and Men U23 lists.

Preliminary program

Date	Time	Events
12/7 Tuesday		Arrival and training in Falun and Säter
13/7 Wednesday	11:00	Arrival and training in Falun and Säter Model events in Falun and Säter
14/7 Thursday	11.00 19:00	Model events in Falun and Säter Teamleaders meeting, Event centre
15/7 Friday	10.00 19.00 20.00	Middle distance, Säter Teamleaders meeting, Event centre Prize-giving ceremony, Event centre
16/7 Saturday	10.00 19.00 20:00	Relay, Säter Teamleaders meeting, Event centre Prize-giving ceremony, Event centre
17/7 Sunday	9.00 20.00	Long distance, Falun Prize-giving ceremony, Event centre
18/7 Monday	11.00 19.00	Model event sprint, Falun Teamleaders meeting, Event centre
19/7 Tuesday	10.00 19.00 20.00	Sprint, Falun Teamleaders meeting, Event centre Prize-giving ceremony, Event centre
20/7 Wednesday	10.00 18.00 18.00	Mass start, Falun Prize-giving ceremony, Event centre Closing ceremony and banquet, Falun
21/7 Thursday		Departure of the teams

Digital entries

All entries via IOF Eventor

World MTBO Championships:

<https://eventor.orienteering.org/Events/Show/6736>

Junior MTBO Championships:

<https://eventor.orienteering.org/Events/Show/6737>

Competitors may only be entered by their Federations.

Entries open on 1st March 2022.

Deadlines

Late entries and withdrawals

Late entries/withdrawals will be accepted as follows:

After 14th May 2022

- Entries will be accepted with surcharge of 20%.
- Withdrawals will receive a refund of 80%

After 4th July 2022

- Entries will be accepted with surcharge of 50%.
- Withdrawals will receive a refund of 50%

A charge will be made for a name change after 4th July of 100 SEK per name.

After 14th July 2022 at 12.00 (noon) no entries will be accepted.

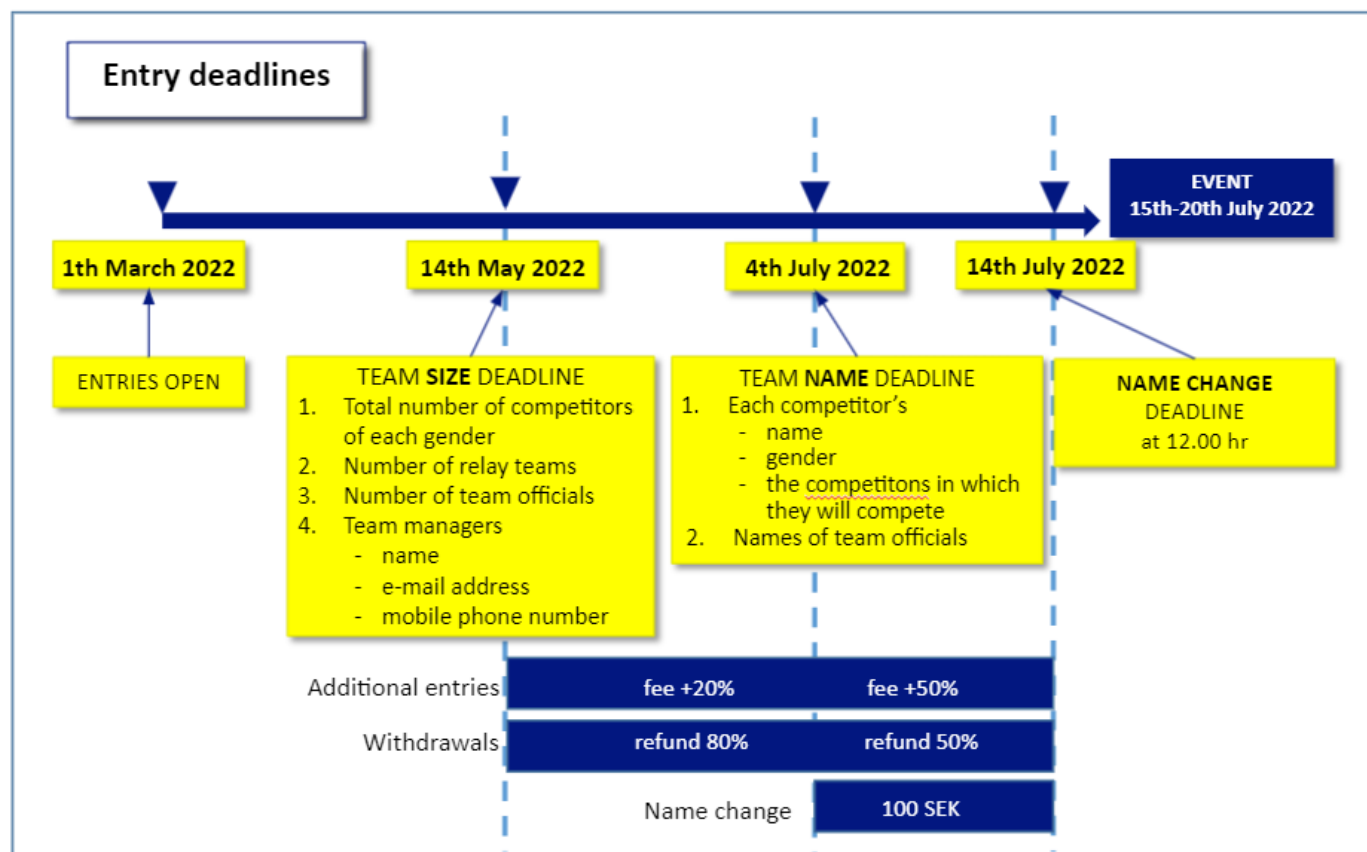


Figure.

Entry Fees and payments

Entry fees	WMTBOC	JWMTBOC	Team leaders
Accreditation (per person)	650 SEK *)	450 SEK *)	650 SEK
Mass	650 SEK	450 SEK	
Sprint	650 SEK	450 SEK	
Middle	650 SEK	450 SEK	
Long	650 SEK	450 SEK	
Relay (per team)	1 900 SEK	1 300 SEK	

*) Includes Model Events and final banquet

Fees for additional entries and name changes, see figure page 7.
Press / media free of charge.

Payment details

Payee: Säterbygdens orienteringsklubb, Livens väg 1, S-781 60 Gustafs, Sweden.
VAT-no: 882601-3388
BIC: HANDSE55
IBAN: SE81 6000 0000 0007 3998 7348
Bank: Handelsbanken. Box 191, 781 22 Borlänge, Sweden

All charges and bank fees are to be paid by the payer

Note!

Full payment of all entries including accreditation fees must be made by 3rd June 2022 at the latest.
An additional fee for late payment is 10%.

For additional entries or name change payment must be in time before race day. No payment, no start.

Refund for withdrawals, see figure on page 7.

Accommodation and Food

Hotel

Scandic hotel Lugnet

- 950 SEK / single room and night incl. breakfast
- 1050 SEK/ twin room and night incl. breakfast
- 1250 SEK / triple room and night incl. breakfast

For booking, contact falun@scandichotels.com or +4623 669 22 00

Booking code: World MTB orienteering championships



Cottages

First camp Lugnet

Cottages for 2 people up to 5 people

Prices are stated during October 2021

Email interest to niclas.johansson@visitdalarna.se



Other accommodation

For other accommodation go to www.visitdalarna.se

Bike Storage

Bicycles can be stored in hotel rooms and in cabins. There are also a number of lockable cabinets at arena Lugnet.

Food

There are plenty of restaurants on and near the accommodation facilities. In the competition arenas, there will be simpler restaurants.

Transport

The closest international airports are Stockholm Arlanda (ARN), 230 km / 2,5 hours drive to Falun, and Skavsta (Nyköping) (NYO), 270 km / 3,5 hours drive to Falun. Stockholm-Arlanda is the main airport in Sweden.

<https://www.swedavia.com/arlanda/>

<https://www.skavsta.se/en/>

There are direct train services from Stockholm Central Station and Arlanda to both Falun and Säter. The closest train station is Falun Central, 2,5 km to Event Centre. <https://www.dinstation.se/faluns-station/>

Starting from Stockholm-Arlanda airport, you may have to change train once but some trains are direct trains. Bikes can be taken on trains, packed in a bicycle bag (maximum 140x85x30 cm, 25 kg). For more information, time tables, tickets and prices see: www.sj.se

The distance to Säter is 40 km from the Event Centre.

For special transport requests, please contact the organisers info@wmtboc2022.se by 14th May 2022.



Entry Permits to Sweden

Visa Requirements and Travel Documents Accepted by Sweden

The Schengen states have agreed which countries' citizens are required to present a visa. Each Schengen state decides which passports and travel documents it accepts from different countries' citizens.

Even if you do not need a visa to visit Sweden, you need a valid passport or some other travel document accepted by Sweden. It must be valid for at least ninety days after your intended date of departure from the Schengen area. In addition, the passport or other travel document must have been issued no later than ten years ago.

If you are not required to have a visa, you can stay in Sweden or in the territory of another Schengen state for ninety days in any 180-day period.

For more information on visa requirements and travel documents accepted by Sweden please visit: <https://www.migrationsverket.se/English/Private-individuals/Visiting-Sweden/Visit-Sweden-for-less-than-90-days---apply-for-a-visa.html>

Visas must be applied for at your nearest Swedish Embassy. For a list of Swedish missions abroad, please visit:

<https://www.swedenabroad.se/en/>

Opportunities for Training

We can offer training packages during August 2021, September 2021, October 2021, May 2022, June 2022 and July 2022.

Contact Rasmus Nordgren rasmus.nordgren.rn@gmail.com who will help you with your training requirements.

The following training areas are available:

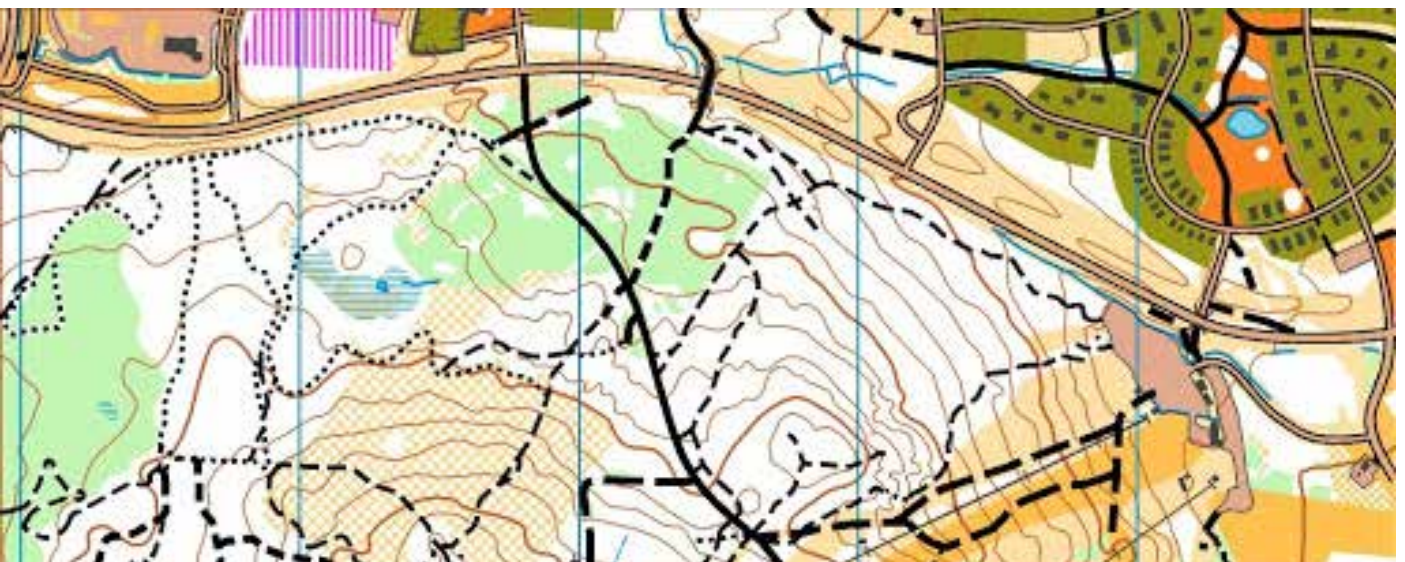
Stångtjärn

ISMTBOM, surveyed 2019, updated and extended 2020 by Steven Hale. Mapped area 35km². Relevant terrain for long distance and mass start. 5km from the Event Centre.



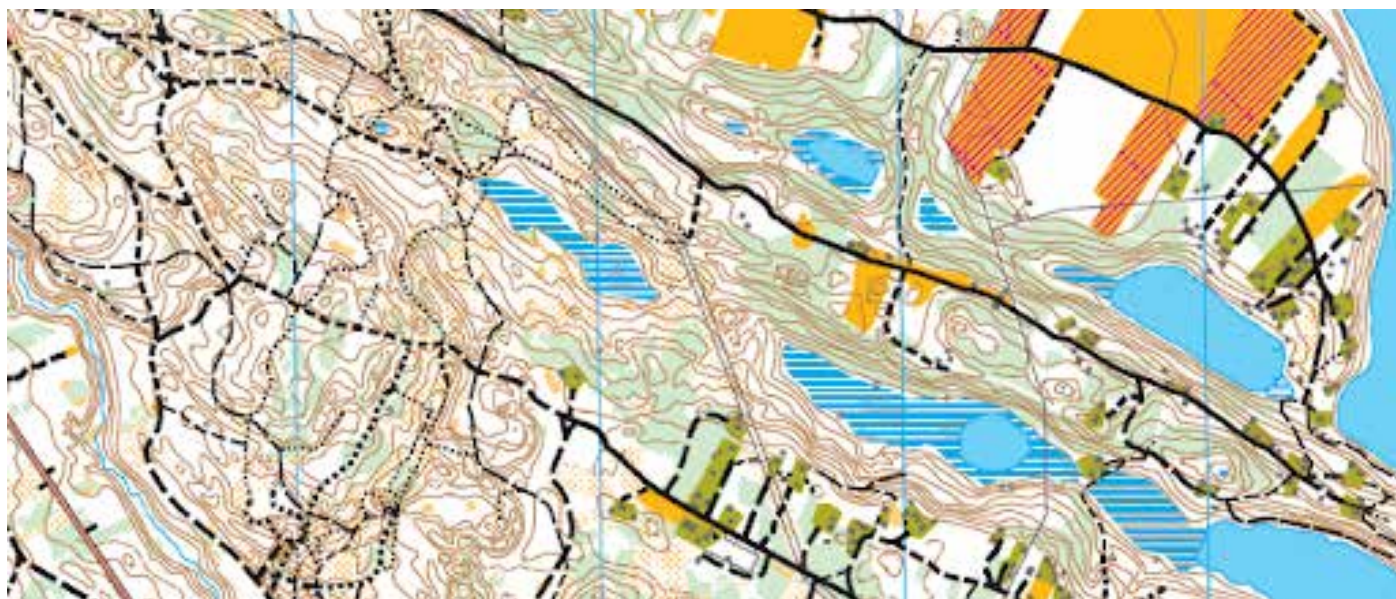
Källviken

ISMTBOM, surveyed 2020/2021 by Steven Hale. Mapped area 11km². Relevant terrain for long distance and sprint. 5km from the Event Centre.



Bäsna

ISMTBOM, updated 2018 by Anders Thomasson. Mapped area 13km². Relevant terrain for middle distance and relay. 40km from the Event Centre.



If you wish to combine a training camp with races in Sweden the following national events are available:

2021

- 6th August, Swedish Championships, sprint, Örnsköldsvik.
<https://eventor.orientering.se/Events/Show/33585>
- 7th August, Swedish Championships, long, Örnsköldsvik.
<https://eventor.orientering.se/Events/Show/33586>
- 8th August, Swedish Championships middle, Örnsköldsvik.
<https://eventor.orientering.se/Events/Show/33587>
- 28th August, Swedish Cup, sprint, Gävle.
<https://eventor.orientering.se/Events/Show/34032>
- 29th August, Swedish Cup, middle, Gävle.
<https://eventor.orientering.se/Events/Show/34033>
- 25th September Swedish Cup, sprint, Surahammar.
<https://eventor.orientering.se/Events/Show/34186>
- 26th September Swedish Cup, extended middle, Surahammar.
<https://eventor.orientering.se/Events/Show/34188>

More races (district and local level) can be found at
<https://eventor.orientering.se/Events>

2022

Race fixtures for 2022 will be published autumn 2021, see <https://eventor.orientering.se/Events>

Punching system

Punching system is SportIdent.

Winning times

Winning times will be as specified in the IOF MTB Orienteering Rules for WMTBOC and the IOF MTB Orienteering Rules for JWMTBOC which are applicable for 2022.

See <https://orienteering.sport/mtbo/competition-rules/>

Map Details/ Map Samples and Terrain Descriptions

All maps will be drawn according to the International Specification for Mountain Bike Orienteering Maps (latest version).

Middle

Mapper: Oskar Sandberg

Scale: 1:10 000 and 1:7 500

Contour interval: 5m

Terrain description: The area consists of a pine forest with big depressions. The terrain is generally moderately hilly with some steeper slopes. The area contains a dense network of mostly good rideable paths and forest roads. Some paths may be slow due to the sandy surface, partly old sandpit area. Good visibility.



1:10 000 (Old map)

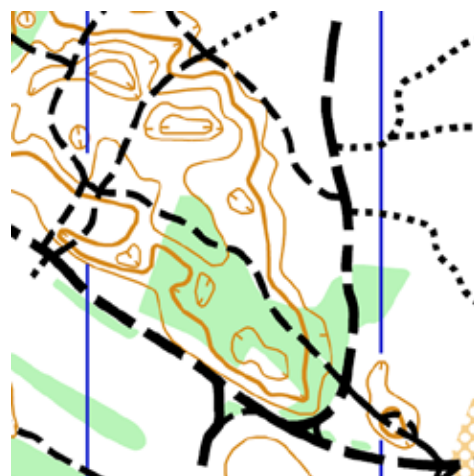
Relay

Mapper: Oskar Sandberg

Scale: 1:10 000

Contour interval: 5m

Terrain description: A rather flat area with some moderately hilly slopes and valleys. Pine forest with a dense network of good rideable paths, tracks and forest roads. Some areas with a very dense path network occur. Mainly good visibility, but some parts with younger forest where the visibility is lower.



1:10 000 (Old map)

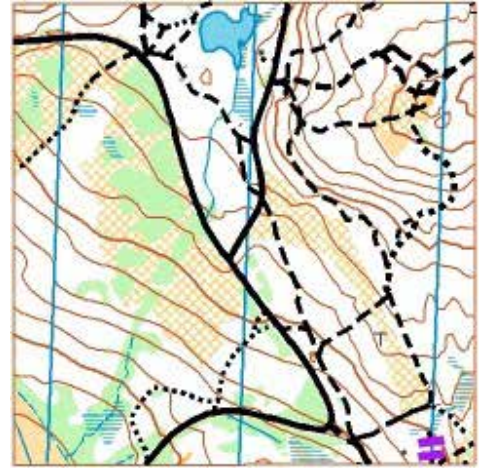
Long

Mapper: Steven Hale

Scale: 1:15000

Contour interval: 5m

Terrain description: Moderate to very hilly mainly pine forest with an extensive network of paths, tracks and forest roads. Some areas with a very dense path network occur. Paths and tracks are of a wide variety of speeds. On the slower paths it is often rocks and roots which reduce the speed.



1:15 000 (Old map)

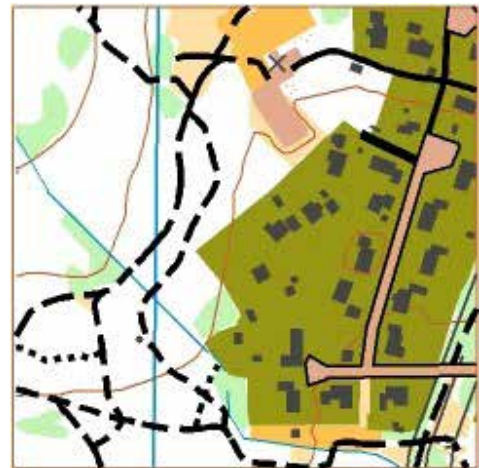
Sprint

Mapper: Steven Hale

Scale: 1:5 000

Contour interval: 5m

Terrain description: A rather flat area with urban, forest and parkland terrain. Generally fast cycling but some short sections of technical cycling can occur.



1:7 500 (Old map)

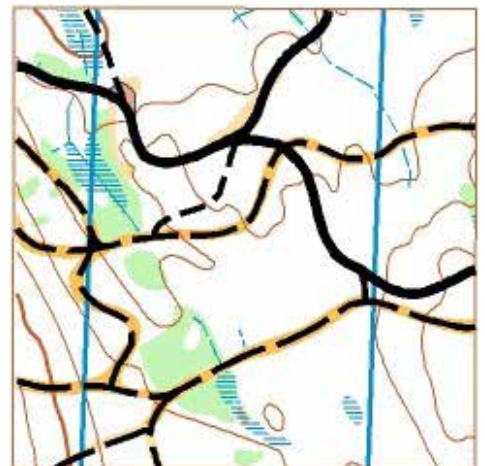
Mass Start

Mapper: Steven Hale

Scale: 1:10 000 and 1:5 000

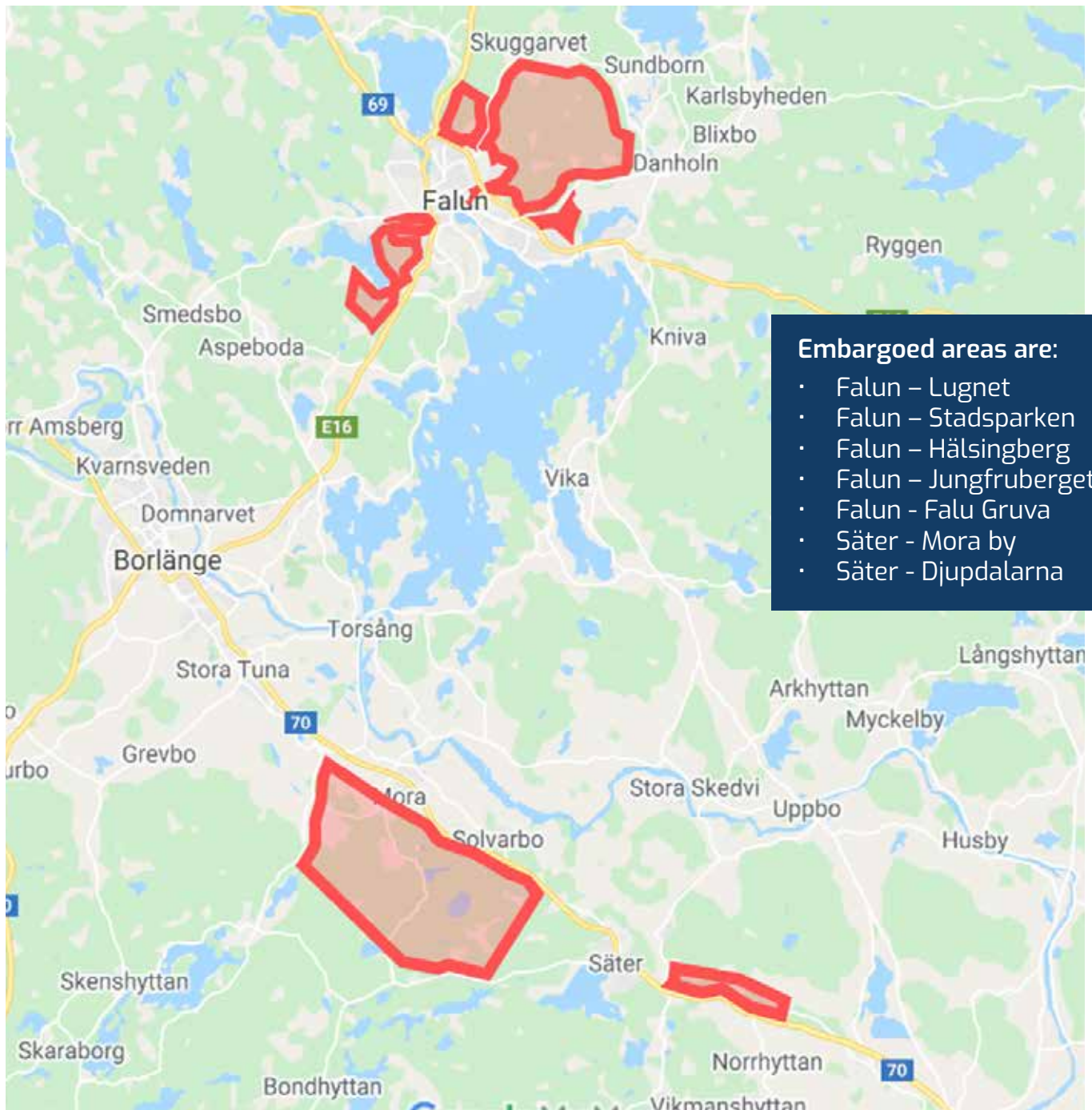
Contour interval: 5m

Terrain description: Moderate to very hilly mainly pine forest with an extensive network of paths, tracks and forest roads. Some areas with a very dense path network occur. Paths and tracks are of a wide variety of speeds.



1:10 000 (Old map)

Embargoed areas



Link to maps - embargoed areas: https://bit.ly/wmtboc2022_embargoed

Any attempt to survey or train in the competition terrain is forbidden, unless explicitly permitted by the organizer. The embargoed areas are out of bounds for all potential participants and team members, including competitors, team leaders, coaches, doctors, and any other person who through their knowledge of the terrain may influence the result of the competitions.

Exceptions to this are:

- Passage through the embargoed areas is allowed on tarmacked public roads.
- Embargoed area Lugnet, Falun – cross-country skiing and roller skiing without an orienteering map is allowed
- Embargoed area Falu Gruvan (copper mine) – access to this tourist site is allowed on foot and without an orienteering map.

Any permission for other access into embargoed areas must be requested, before access, from the organizers. This includes also if there are any MTB events taking place in the embargoed areas and potential competitors wish to participate. The embargo includes the use of drones in or about the terrain.

Previous maps

• Säter	Mora by,	2018	1:15 000	https://bit.ly/sater_mora_by
• Säter	Djupdalarna E	2018	1:10 000	https://bit.ly/sater_djupdalarna_e
• Säter	Djupdalarna W	2018	1:10 000	https://bit.ly/sater_djupdalarna_w
• Falun	Gruvrisberget		1:10 000	https://bit.ly/falun_gruvrisberget
• Falun	Hälsingberg		1:10 000	https://bit.ly/falun_halsingberg
• Falun	Gruvan	2018	1:7 500	https://bit.ly/falun_gruvan
• Falun	Lugnet S	2018	1:10 000	https://bit.ly/falun_lugnet_s
• Falun	Lugnet NE	2018	1:15 000	https://bit.ly/falun_lugnet_ne
• Falun	Lugnet NW	2018	1:10 000	https://bit.ly/falun_lugnet_nw

Local Weather Conditions

July	Average	Minimum	Maximum
Temperature	19	16	27
Rainfall	3 mm per day		
Sunshine	8 hrs per day		

Antidoping

Doping is strictly forbidden, and the organizers of the WMTBOC2022 are dedicated to supporting the anti-doping authorities in their work. Doping controls may be carried out at any time during the competition period. Doping tests are carried out in accordance with the procedures described in the WADA International Standard for Testing.

Media Services

Media services and facilities are provided at the Event Center. All media representatives are welcome to cover all the WMTBOC2022 events and Public races.

All media accreditations should be made by e-mail at media@wmtboc2022.se by 23rd June 2022 at the latest.

Media representatives and team officials are encouraged to bring their own computers. WIFI services will be offered at the Event center.

Summary of Deadlines and Important Dates

1th March 2022	Entries open
14th May 2022	Team SIZE deadline
15th May 2022	Bulletin 3
3rd June 2022	Payment WMTBOC2022
11th July 2022	Bulletin 4
4th July 2022	Team NAME deadline
14th July 2022 at 12.00	Changes deadline
8th July 2022	Entry Spectator races

Spectator races

Date	Time	Events (Link to Swedish Eventor)	
15/7 Friday	15.00	Middle distance, Säter	
16/7 Saturday	15.00	Middle distance, Säter	World Masters Series
17/7 Sunday	16:00	Middle distance, Falun	Young Guns World Series
19/7 Tuesday	14:00	Sprint, Falun	World Masters Series, Young Guns World Series
20/7 Wednesday	15.00	Mass start, Falun	

Rules

All competitors represent a Federation. Each Federation may enter a team of an unlimited number of competitors and team officials. A competitor must have a valid IOF Athlete License. Competitors participate at their own risk. Third party insurance and personal injury insurance is compulsory and shall be the responsibility of their federation or themselves, according to national regulations. All events are organized in accordance with the valid Competition Rules for IOF MTBO Orienteering Events. See:

<https://orienteering.sport/mtbo/competition-rules/>

Riding is not allowed off tracks. All controls will be situated on paths and roads.

Entries (spectator races)

Swedish Eventor. <https://eventor.orientering.se>

If you don't have a profile you can make one.
Log in and make your entries!
Last day entry for age classes 8th July 2022.
Entry for Open classes until race day, also on site.

Fees per day (spectator races)

Adults 225 SEK
Youth 150 SEK
Open, adults 175 SEK
Open, youth 150 SEK

Payments, see Swedish Eventor.
<https://eventor.orientering.se>

Classes

Classes	Age interval	Day 1	Day 2	Day 3	Day 4	Day 5
W10 M10	10 year and younger	X	X	X	X	X
W12 M12	12 year and younger	X	X	X	X	X
W14 M14	14 year and younger	X	X	X	X	X
W16 M16	16 year and younger	X	X	-	-	X
W17-20 M17-20	20 year and younger	X	X	-	-	X
W17 M17	17 year and younger (Young Guns Youth)	-	-	X	X	-
W20 M20	20 year and younger (Young Guns Junior)	-	-	X	X	-
W21 M21	21 year and older or younger	X	X	X	X	X
W35 M35	35 year and older	X	X	X	X	X
W40 M40	40 year and older	X	X	X	X	X
W45 M45	45 year and older	X	X	X	X	X
W50 M50	50 year and older	X	X	X	X	X
W55 M55	55 year and older	X	X	X	X	X
W60 M60	60 year and older	X	X	X	X	X
W65 M65	65 year and older	X	X	X	X	X
W70 M70	70 year and older	X	X	X	X	X
W75 M75	75 year and older	X	X	X	X	X
Open Short	All ages	X	X	X	X	X
Open Middle	All ages	X	X	X	X	X
Open Long	All ages	X	X	X	X	X

More information

Webpage: wmtboc2022.se

Facebook: facebook.com/wmtboc2022/

Instagram: <https://www.instagram.com/wmtboc2022/>

Youtube channel: <https://www.youtube.com/channel/UCDSlodRLFMjX3ivBxAHfDOg>

O-Ringen 25th – 30th of July

Just after WMTBOC it is possible to join the Swedish O-Ringen in Uppsala, which includes five days of MTBO.

See more on: <https://www.oringen.se>



We are looking forward hosting the World MTBO Championships and Junior World MTBO Championships 2022

See you in Falun/Säter Sweden!

Document history

Date	Version	Comments	Changed by
2021-07-17	1.0	First version	Anki Svärdby-Bergman
2021-08-05	1.1	Corrected deadline for payment, page 9	Anki Svärdby-Bergman
2022-01-20	1.2	Spectator races, Payment method/deadline, Punching system.	Anki Svärdby-Bergman
2022-02-26	1.3	New info for Classes U23	Anki Svärdby-Bergman