

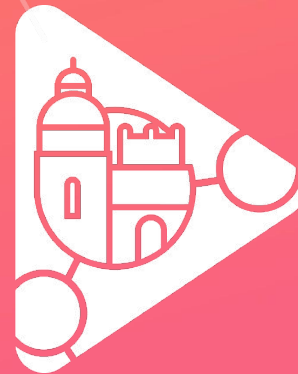


TOM Covid-19 bulletin

5 August 2021

European Youth
Orienteering Championships

VILNIUS 2021





ORIENTEERING.LT
LIETUVOS ORIENTAVIMOSI SPORTO FEDERACIJA



CONTACT INFORMATION

For Covid-related correspondence and emergencies write to covid@eyoc2021.lt

COVID-19 - responsible person (confirmation, PCR tests, precautions etc.)

Gytis Nakvosas E-mail: nakvosas.gytis@gmail.com Phone No.: +37064334947

COVID-19 - doctor

Vesta Aleliūnienė E-mail: vestaambrazaite@gmail.com Phone No: +37065426520

European Youth
Orienteering Championships
VILNIUS 2021





ORIENTEERING.LT
LIETUVOS ORIENTAVIMOSI SPORTO FEDERACIJA



- **no spectators at the Competition arenas**
- **two testing sites + event centres (for accreditation)**
- **no testing for persons infected with Covid-19 in the last 180 days (must submit a medical certificate)**
- **wearing a mask obligatory everywhere, except when eating, drinking and exercising**
- **social activities outside event centre cancelled**

European Youth
Orienteering Championships
VILNIUS 2021



ENTERING LITHUANIA

Entrance test: PCR, no later than 72 h; Antigen, no later than 48 h before arrival. Excl. persons with immunity/fully vaccinated

EU citizens can use EU Covid digital certificate

Exemption from self isolation. Participants and team members enter Lithuania as 'high-performing athletes and/or sports instructors', athletes and team officials get an exception from the requirement of self-isolation after entering Lithuania.

NB! Do not forget to mark your exemption when filling out Travellers' Questionnaire ([link](#))

- ☐ Do you need sick leave for a period of isolation? (only for Lithuanian citizens / residents)
- ☐ I got acquainted with the [rules of isolation](#). NOTE: "If you have indicated that you have visited countries on return from which self-isolation does not apply, you will not be required to self-isolate after you will fill in all required fields and submit this Questionnaire"
- ☐ I certify that the information provided is correct
- ☒ I am covered by exemption from self-isolation under Sub-paragraph 1¹.1 of the Isolation Rules and certify that I have supporting documents and will be able to provide them to the officials conducting the inspections (select one of the exceptions below).
- ☐ I have a certificate / laboratory testing result form confirming a negative PCR test for a COVID-19 disease taken no more than 72 hours ago or a negative antigen test taken no more than 48 hours ago.
- ☐ I got acquainted with the [decision of the chief epidemiologist](#)

Submit

[General information regarding Coronavirus precautions in Lithuania](#)

[Information for arriving foreigners incl. entry requirements \(National Public Health Center\)](#)



ENTERING LITHUANIA (rules valid 2-8 August)

Green countries:

Bulgaria, Germany, Hungary, Latvia, Poland, Liechtenstein, Romania, Slovakia, Slovenia

QR (questionnaire) + entrance test (negative result)

Yellow countries:

Austria, Croatia, Czech Republic, Estonia, Finland, Greece (Thassos only), Iceland, Norway, Portugal (Madeira only), Sweden

QR + entrance test + 2nd test in 3-5 days after arrival

Red and grey: rest of the world

QR + entrance test + 10 days isolation / 7 days isolation + negative PR test result

NB! Children up to 16 years old are not required to show a negative test to enter Lithuania!

Check for updates here: [\(link\)](#)

ENTERING THE EYOC 2021 BUBBLE

To arrive to Lithuania: PCR/Ag Test (72/48 hours)

Accreditation: PCR test, 48 hours

Event centre check-in: Antigen test

Documents to submit to the Organizers:

- Exception from Quarantine (Word doc)
- Arrival information (Extra services, online form)

Not all teams have submitted their Arrival information!

Please fill ASAP!

Only then we can allocate terms for Team testing!



ON-SITE TESTING (ANTIGEN)

The On-site Covid-19 Antigen testing will be carried out in collaboration with our partner kraujolaboratorija.lt, which will provide a mobile laboratory on 18-19 August **(Wednesday-Thursday)**.

There will be two testing locations:

- at Urbihop hotel, Ažuolyno g. 7, Vilnius, 54.70662, 25.23493
- at Green hotel, Pilaitės pr. 20, Vilnius, 54.69898, 25.21140
- PCR test - 70 eur per person, test results will be available not later than 24 hours.
- Antigen test - 25 eur per person, test result will be available not later than 30 minutes.
- Express PCR test - 110 eur per person, test results will be available not later than 6 hours.

In case of a positive Antigen test, Organisers cover the expense of a subsequent PCR test.

Testing times

18 August/Wed

19 August/Thu

10:00-20:00 (EEST)

7:00-19:00 (EEST)

We will contact each Team with term and location as soon as we receive Arrival data from all Teams.

POSITIVE TEST

Infected person:

- Strict quarantine. State of the patient will be followed by Covid doctor, Nat. Public Health Centre (NVSC) specialist.
- Care possible only with no physical contact.
- Can leave Lithuania only after having recovered from illness.

Affected persons:

- Contact tracing. Possible isolation of people with close contact. **Each case will be surveyed by the local public health service specialist.**
- Isolated persons are not allowed to visit any commonly visited rooms (such as canteens, etc.)
- Highly recommended for the Teams to have an Official who has undergone full vaccination / is immune to Covid-19 in case care of a sick Team member is needed.
- Organisers will provide accommodation (without covering the costs)
- The duration of a quarantine is 14 days. It can be shortened to 10 days, after submitting a test on the 7th day.
- Foreign citizens with a contact may leave Lithuania before the end of the isolation. Lithuanian health authorities must be informed. Check information [here](#).
- Isolation, quarantine, medical and testing costs have to be covered by an individual or a Team itself. Please take these costs into account when planning your trip.

RULES IN THE BUBBLE AND DURING COMPETITION

- Maintain social distance
- Mask wearing - **mandatory inside and outside**
E.g. in Arenas, race quarantine, pre-start, event office, dining, busses to the races.
- Disposable face masks will be provided at the Competition arena for runners after finish.
- Wash hands frequently. Substances will be made available.
- Prize giving ceremonies: no handshakes, hugs. Athletes can remove masks for the photo-ops.
- Avoid any unnecessary contact (spectators, family member etc.) on any occasion.
- Act responsibly when outside the Bubble (e.g. in your free time): avoid excessive contact, visits, shopping etc.

RULES DURING COMPETITION (for media)

- Only pre-registered media with accreditation can enter
- Wearing mask is obligatory!

RULES DURING COMPETITION (for VIP / Partners/ IOF Family)

- Only pre-registered VIP/Partners with accreditation can enter.
- Accreditation will be done by the first entering of the competition arena.
- Upon entering the Arena, a person must provide a Covid certificate (LT, EU)
- Wearing mask is obligatory!
- No handshakes, close contact, social distancing

QUESTIONS AND ANSWER SESSION

- Questions received in advance
 - Live questions

Q+A session

Question in advance

? We have a full team entered into EYOC. In case someone tests positive BEFORE starting the trip (leave-out PCR). Of course that person who tested positive and their contacts are not coming. Will there be any refund for the entry fee? Will we be able to change the person at the last minute (enter the other one, in case their PCR is negative and they have permission to enter Lithuania)?

- According to 'Changes to entries' in Bulletin 2, page 12. No refunds after 15 August.

? If some person tests positive in an antigen test during accreditation - is the additional PCR test obligatory? Can a person just go back home? (we travel by cars, so it will be possible to arrange it and probably the cost is lower than 70 EUR).

- A person with positive Ag test must be tested with PCR to make sure he/she is not infected. The Organizers will cover the expenses for subsequent PCR test. Otherwise, an infected person must be quarantined and cannot be taken to his/her home country.

? If a person passes antigen - and tests positive. Then he passes PCR - positive again. Should this person be quarantined in Lithuania? Or can we arrange this person's travel back home using the car? If it is obligatory to stay in Lithuania and a positive person is a youth younger than 18 years old - does it mean some adult should go to quarantine too?

- Such a person must be quarantined. It is not allowed to leave the country with Covid infection. There is no requirement for an adult to be quarantined with someone who is younger than 18. We strongly suggest Teams have a person with immunity who will help the youngster with care and supplies.

? If one team member tests positive for antigen - will only this person go to PCR test - or the whole team?

- Only the affected persons must undergo a subsequent PCR test.

Q+A session

Live questions

Q. FFP2 masks required or advised ?

A. (Not required but strongly advised. Surgical mask at least and NO cloth masks)

Q. when do we need to announce if we need prc tests after the event for travelling home?

A. See the Bulletin: August 10.

Q. PCR test 48h before competition or before accreditation ?

A. 48h before the first event day which is 19/8 (Model event). So PCR test must be from 17 or 18/8

Q. We will arrive tuesday 17 evening with EU green pass and antigen test: are they enough for the first night in the accommodation? We will have the response of PCR test in the morning on 18...

A. Yes, this will be enough to check in to the accommodation

Q. If our team has PCR tests at the event centre on 18 August, will we also need Antigen tests and will they be at the same time?

A. Yes both are needed and can be done at the same time