



Ministry of Youth and Sports



02

BULLETIN

21 - 27 January 2022

Chepelare – BULGARIA

WCUP | ESOC | WMSOC

ORGANIZERS

BULGARIAN ORIENTEERING FEDERATION and Orienteering club "NSA-SIVEN" in cooperation with Municipality of Chepelare

Event Director	:	Valentin Garkov
Organizing Manager	:	Todor Pedev
Event Secretary	:	Krasimir Danailov
Course Setter	:	Georgi Hadzhimitev

CONTACTS

E-mail	:	esoc_wmsoc_2021@abv.bg
Website	:	https://esoc-wmsoc2022.bg/
Phone	:	+359 898776334

EVENT CONTROLLERS

IOF Senior Event Adviser	:	Per Frost
National Controller	:	Petar Doganov



Dear ski orienteering friends,

It is a high responsibility and pleasure for our country and the Bulgarian Orienteering Federation to organize the European Ski Orienteering Championship here and the accompanying WMSOC in Bulgaria. This household is associated with traditions in organizing events in ski orienteering of the highest rank

and it is no coincidence that the areas are in the heart of our beautiful Rhodope Mountains. Here is the birthplace of skiorienteering and the best biathlete from the recent past Ekaterina Dafovska, the only one in Bulgaria Winner of a gold medal at the Winter Olympics.

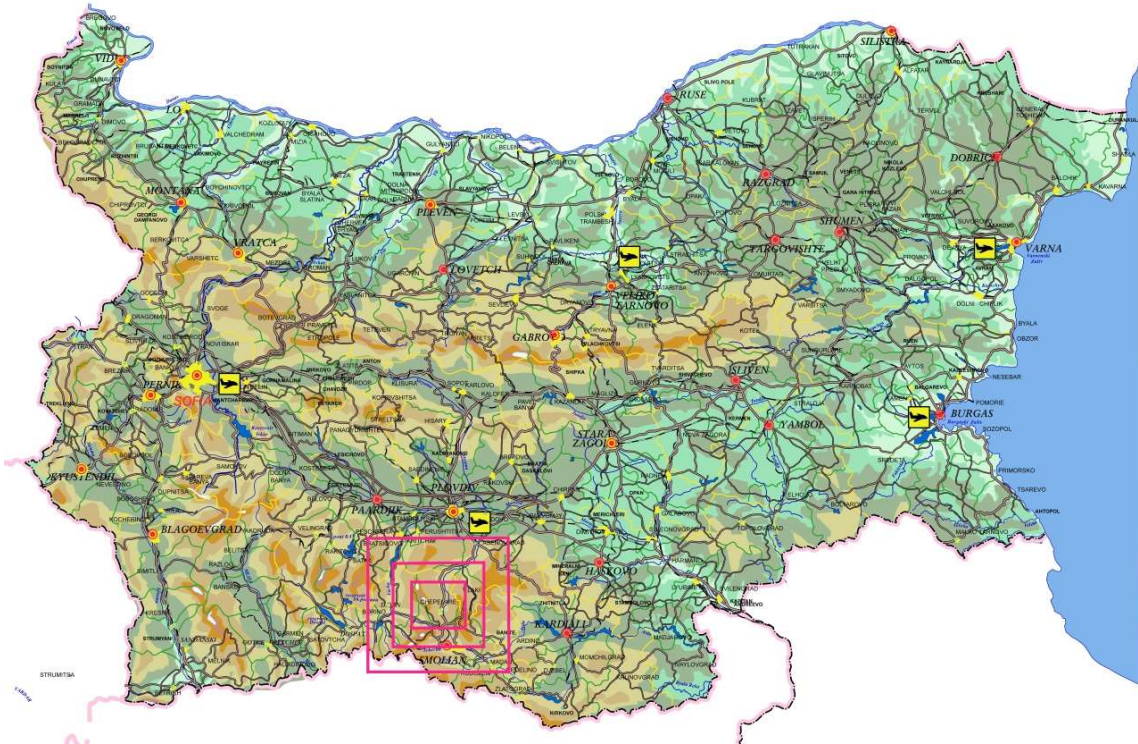
I hope and believe that the championships will meet the high requirements of all ski orienteers and that we have good weather conditions contributing to the competitions. I would like to wish successful starts for all athletes, good luck for the organizers and pleasant competitions for the spectators. I also hope that, in addition to the manifestation of the highest sportsmanship and achievements, new acquaintances and friendships, fun and satisfaction from the practice of our favorite sport will happen!

On behalf of the Bulgarian Orienteering Federation, I warmly welcome all athletes, coaches and spectators.

Chairman of the BFO

Kostadin Novakov

➤ ABOUT THE REGION



Chepelare is the principal town in Chepelare Municipality, part of Smolyan Province in Southern Bulgaria. It is situated in the central part of the Rhodopes, on the banks of Chepelare River. Chepelare is a popular winter resort with one of the longest ski runs in Southeastern Europe. It is located near Pamporovo, one of the biggest Bulgarian ski resorts.

The town is known for the only ski and snowboard factory in the Balkan Peninsula. The factory cooperates with the ski brand Atomic Skis. Chepelare is also the birthplace of biathlete Ekaterina Dafovska, Bulgaria's only Winter Olympics gold medal winner. The local Sports School provides good conditions for young winter athletes. Chepelare is located 70 km from Plovdiv and 210 km from Sofia. Coordinates: 41°43'33"N 24°41'4"E

➤ **VENUE**

Event Centre – Hotel “Borika” – Chepelare



Competition Area – Haidushki Polyani – 25 km from the Event centre



➤ **ENTRIES**

- All teams are required to send information about the number of participants (athletes, leaders, coaches) by **10.12.2021**.
- Please submit a list of names and gender of the intended participants (registration by name) by **31.12.2021**.
- Online entry via IOF Eventor.

➤ **CLASSES AND PARTICIPATION RESTRICTIONS**

ESOC: W/M 21E

The participation restrictions will be according to ESOC rules.

For every competition, each federation may enter:

- Individual events: Maximum of 6 men and 6 women per country
- Mixed sprint relay: Maximum of 3 teams
- Relay: Maximum of 2 male teams and 2 female teams

The current European champion of the distance shall be given a wild card for the red group in addition to the ordinary entries from his/her federation.

Only competitors representing member federations of the IOF defined by the International Olympic Committee as belonging to the European continent can compete in ESOC.

World Cup: W/M 21E, U23

A federation may enter a team of unlimited number of competitors and officials. However, in each individual competition, every federation may enter up to 6 men and 6 women. In the relay, each federation may enter 2 teams in each class consisting of 3 athletes. Only the best team will be counted.

In class U23, each federation can represent two (2) competitors, respectively men and women. More details will be given in Bulletin 3.

WMSOC: (M/W 35, 40, 45, 50, 55, 60, 65, 70, 75, 80, 85, M90)

Open for everybody and the class depends on the age.

- **Long distance:** Single race event with random start order.
- **Middle distance:** Single race event with random start order.
- **Sprint distance:** Single race event with random start order.

Medals are awarded in long distance, middle distance, and sprint distance events (three sets of medals).

➤ **EVENT RULES**

The competition will be conducted according to the IOF rules for ski orienteering events.

➤ **EVENT PROGRAM – PRELIMINARY**

	ESOC/WCUP	WMSOC
January 20 Thursday	Arrival	
January 21 Friday	Arrival/Model Event	Arrival/Model Event
January 22 Saturday	Sprint (am)	Model Event (pm)
January 23 Sunday	Sprint relay – only ESOC (am)	Sprint (pm)
January 24 Monday	Middle – mass start (am)	Middle (pm)
January 25 Tuesday	Rest day/Practice/VIP race	Rest day/ Practice/VIP race
January 26 Wednesday	Long (am)	Long (am)
January 27 Thursday	Relay (am) Banquet	Banquet
January 28 Friday	Departure	Departure

➤ **ENTRIES AND ACCREDITATION FEES**

Fee type (additional transportation is included in the entry fee)	Fee in EUR per competitor
Accreditation fee for athletes	Before 05 January 2022 – 40 EUR After 06 January 2022 – 50 EUR
Accreditation fee for team officials	Before 05 January 2022 – 50 EUR After 06 January 2022 – 60 EUR
Entry fee per individual competition	Before 05 January 2022 – 45 EUR After 06 January 2022 – 55 EUR
Entry fee – Relay (per team)	Before 05 January 2022 – 120 EUR After 06 January 2022 – 160 EUR
Entry fee – Sprint relay (per team)	Before 05 January 2022 – 80 EUR After 06 January 2022 – 90 EUR
Entry fee – WMSOC	Before 01 November 2021 – 120 EUR Before 01 December 2021 – 150 EUR After 01 January 2022 – 180 EUR
Banquet	Before 05 January 2022 – 30 EUR After 06 January 2022 – 40 EUR

➤ **MAPS AND TERRAIN**

All maps are A4 size (21 x 30 cm) with a 5 m contours interval.

Map scale:

Sprint & Sprint relay	1:5000
Long	1:15000
Middle	1:10000
Relay	1:10000

➤ **PRELIMINARY COURSE INFORMATION**

APPROXIMATE COURSE LENGTH, WINNING TIMES

Winning times for each class will be according to IOF rules – November 2020:

WCup women	WCup men	
85-95	85-95	Long distance
50-60	50-60	Middle distance mass start
10-15	10-15	Sprint
6-8	6-8	Sprint relay for each leg
30-35	30-35	Relay for each leg

WMSOC – The courses shall be set to give the following winning times in minutes:

Middle distance winning times should be 30-40 minutes.

Sprint distance winning times should be about 20 minutes.

Long distance:

W35	60	M35	60
W40	60	M40	60
W45	60	M45	60
W50	60	M50	60
W55	60	M55	60
W60	60	M60	60
W65	50	M65	50
W70	45	M70	45
W75	45	M75	45
W80	45	M80	45
W85	45	M85	45

➤ **OPPORTUNITIES FOR TRAINING**

There will be opportunities to participate in organized trainings (races). More details will be given in Bulletin 3.

➤ **PUNCHING SYSTEM**

SPORT Ident AIR+ punching system will be used (SIAC).

➤ **INSURANCE**

The organizers will not be held responsible for the possible human and material damage. All participants should have an insurance and be insured for accident, illness or liability in tort.

➤ **VISAS**

You do not need visa, if you come from an EU or Schengen area country. Other international travelers may be required to hold a Bulgarian visa prior to travel to Bulgaria, depending on your country of residence.

➤ **TRANSPORT**

Sofia to Chepelare – 30 EUR per person (minimum 4 people).

Chepelare to Sofia – 30 EUR per person (minimum 4 people).

Event centre to Competition area to Event centre – 10 EUR per day per person.

Parking – 30 EUR for the whole championships or 10 EUR per day

Deadline for application and payment is **15.12.2021**

Payment received between 16.12.2021 and 15.01.2022 will incur an additional **20%**.

➤ **ACCOMMODATION**

Borika is a 4-star hotel in Chepelare that offers a spa area, an indoor pool, and a restaurant. All rooms at Hotel "Borika" have a balcony overlooking the mountains. The Borika Hotel's spa area includes a sauna, hot tub, and steam bath. Massages are also available. The restaurant features a fireplace and a summer terrace, and serves Bulgarian dishes and regional specialties. There is also a breakfast room and a lobby bar. The elegant rooms feature a flat-screen cable TV, a minibar, and a bathroom with a bath, bathrobes, free toiletries, and a hairdryer. Guests can use a ski storage room and barbecue facilities, and benefit from free Wi-Fi in public areas. Free private parking is available on site.

<https://www.kayak.com/Chepelare-Hotels-Hotel-Borika.700721.ksp>

Accommodation Level	Type (Hotel, Hostel, etc.)	Place	Price
A Single rooms	4-star Hotel	Borika	70 EUR – full board per night per person
B Double rooms and studios	4-star Hotel	Borika	45 EUR – full board per night per person
C1 2 bedrooms with 4 beds	Complex of cottages near the event centre offers self-catering, with a private garden and free Wi-Fi. Free private parking is possible on site.		100 EUR per cottage per night (only bed)
C2 3 bedrooms with 6 beds	Complex of cottages near the event centre offers self-catering, with a private garden and free Wi-Fi. Free private parking is possible on site.		120 EUR per cottage per night (only bed)

The deadline for booking accommodation and 50% deposit is on **30.11.2021**.

➤ **WEATHER INFORMATION**

<https://www.sinoptik.bg/chepelare-bulgaria-100732627/10-days>

➤ **IMPORTANT DEADLINES**

Team size deadline – online via IOF Eventor – **10.12.2021**

Team names deadline – online via IOF Eventor – **31.12.2021**

Entry fees payment deadline for Masters:

- Early – 01.11.2021 – 120 EUR
- Normal – 01.12.2021 – 150 EUR
- Late – 01.1.2022 – 180 EUR

➤ **PAYMENT DETAILS**

Postbank.bg

IBAN: BG79BPBI81701045162201

BIC: BPBIBGSF

Subject: HCA СиВен

➤ **MEDIA INFORMATION**

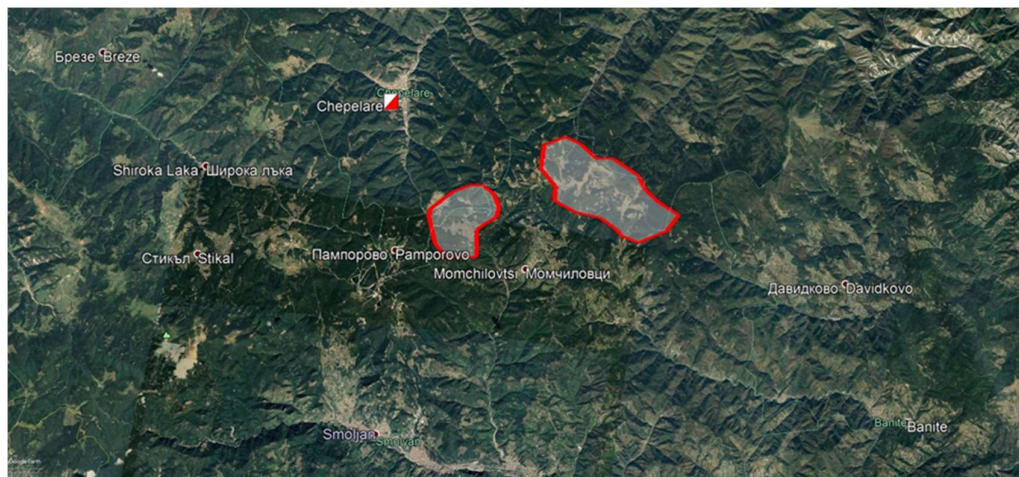
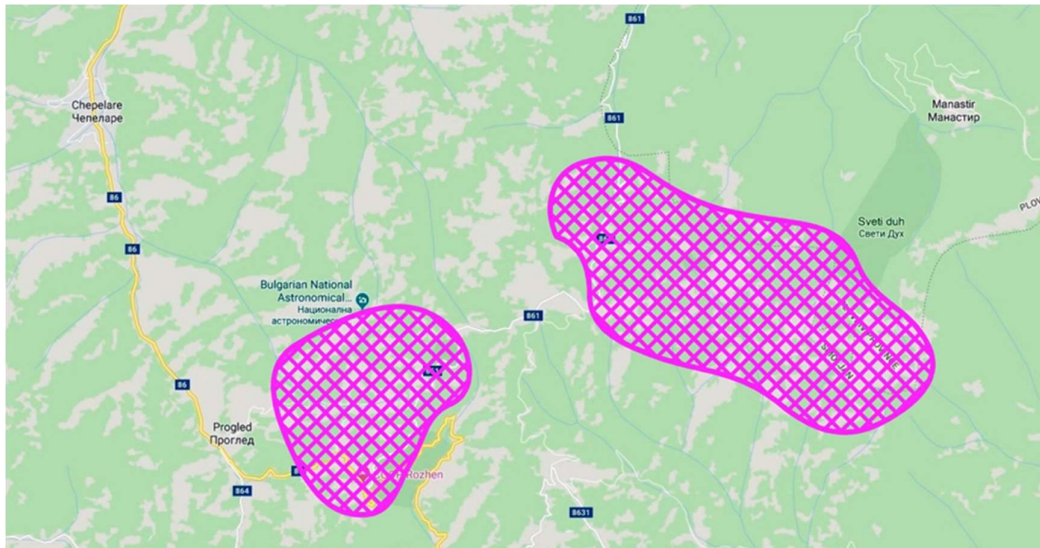
Media centre will be located in Event Centre and Finish area.

Contact person: **Ilian Todorov**

E-mail: iliant@abv.bg

Phone: +359 887568353

➤ OVERVIEW OF THE EMBARGOED AREA



➤ PREVIOUS MAPS OF THE EMBARGOED AREAS

