

WORLD MASTERS
ORIENTEERING CHAMPIONSHIPS 2021
VELENCE, HUNGARY

BULLETIN 2



TABLE OF CONTENTS

1. Welcome	2
2. Organisers, advisers, jury, contact information	7
3. Event programme	9
4. Venue information	10
5. Overview map	13
6. Event centre, event office, accreditation	14
7. Ceremonies and social activities	18
8. Transport and accomodation	19
9. General technical information	20
10. Technical model event, 6th August	38
11. Sprint model event, 6th August	39
12. Sprint qualification race, 7th August	41
13. Sprint final race, 8th August	46
14. Forest qualification and middle final model event, 9th August	52
15. Forest qualification race, 10th August	54
16. Middle final race, 11th August	59
17. Long final model event, 12th August	63
18. Long final race, 13th August	65
19. Public event - WMOC Tour	70
20. Summary of entries	71

1. WELCOME

Welcome back!

Welcome to World Masters Orienteering Championships in Hungary after long and unexpected break in international competition calendar. We expect 4000-4500 participants at WMOC if event is in Europe, this time we have 3 times less participants, but this is not a problem.

The most important message is that we are back, and we have our Championships in 2021.

I would like to thank Hungarian organisers who have shown flexibility and has taken every opportunity to conduct the competition.

On the behalf of International Orienteering Federation, I wish you success in the competitions and after the competitions do not forget to enjoy life in Hungary.

Leho HALDNA - IOF President



Dear Orienteering Friends,

On behalf of the Hungarian Orienteering Federation, I warmly welcome you from all over the world. We still have the memories of your reflections and appreciation received after WMOC 2011 in Pécs, and now ten years later the event is coming back to Hungary. It is a great honour for Hungarian Orienteering to have the opportunity to host the Championships again, and it is an optimistic feeling for every orienteer that - after tough times and so many challenges for all of us and a cancelled WMOC last year - we are here to compete again and proceed with our beloved sport.



The young and dedicated organising team is ready for the challenge, I wish them all good luck! And I say thanks to those who have offered their resources and services as supporters, officials, and volunteers. Without their help this event would really be impossible. The preparation of maps and courses is complete, the venues are awaiting you. The coronation city of Székesfehérvár and the extraordinary terrains of unusual rock formations and abandoned quarries will bring you all the excitement orienteering can offer in this wonderful region. Have a very nice week in Hungary, enjoy the races, relax as much as you can and discover the hospitality of our country!

Balázs KOVÁCS - HOF President

Dear Guests!

It is with great pleasure and happiness that I have the opportunity to welcome all competitors of the World Masters Orienteering Championships 2021!

It is an honour that the best and most experienced athletes of the discipline are about to test their strength, agility and navigation capabilities here at us, on Meleg-hegy and near Ingókő-Pákozd, thanks to the dedicated organisation from Tabáni Spartacus SKE.

The event will be hosted at a region boasting one of the most diverse and unique collections of natural treasure - the Heart of Pannonia. I hope you will be able to discover as much of this wonderful area of Hungary as possible. I suggest that whilst as orienteers, you would find your correct bearing, as a tourist, you would do well to get lost, as only then can you really experience the true welcoming nature of the locals, and the ambiance and beauty of our towns from Székesfehérvár to Csákvár and all the way to the Lake Velence area.

I wish you a great competition, unforgettable experiences and recreation, and last but not least, good health to all the competitors, officials, volunteers and accompanying guests!

Zoltán TESSELY - Member of the Hungarian Parliament



Dear Athletes, Competitors,

A healthy mind in a healthy body! It may be trivial, but it is undoubtedly true that in a healthy body we have a better chance of a good life!

The orienteers I greet on these pages have decided to try to combine physical and mental exercise in a healthy way. They don't regret the extra energy, and even enjoy the challenges and efforts of the sport! Those who run competitively probably already know that the sport wants a whole person.

It is especially gratifying that after the invitation of the International Orienteering Federation, the leaders of the Hungarian Orienteering Association decided that the World Masters Orienteering Championships will be hosted in Székesfehérvár and the Velence Hills in 2021.

The landscapes of our country are beautiful, and perhaps, as a resident of Sukoró, I can say without bias, that Lake Venice and its area are most outstanding of all! Nature, culture, tradition, rest and relaxation are all significant attractions and meaningful pastimes for those who want something a little different ...

Fejér County - and the area of Lake Velence in it - is a special value and according to the possibilities of Fejér County Local Government, it does its best to preserve, present, and enrich the material and natural values of our county!

Congratulations to the athletes who challenge themselves here. I wish you good luck and successful racing!

Krisztián MOLNÁR - President of the Council of Fejér County



Dear Guests!

It is to my great pleasure and pride that Székesfehérvár and its surroundings can once again host a prestigious sports event, the 2021 World Masters Orienteering Championships. There is a lot to be said about our city: in addition to being one of the strongest bastions of the Hungarian economy and the historical capital of our nation as former coronation town, it is also regarded as a citadel and a determining centre of Hungarian sport life.

The modern facilities - created by large-scale investments implemented in recent years - including the MOL Arena Sóstó, the Palotaváros Leisure Park, the Bregyó Regional Athletic Centre (which plays host to the WMOC Sprint Qualification race) and a multitude of outdoor fitness parks, foster the high-quality organisation of international and domestic championships, excellent results, competitive and recreational sport, as well as a healthy, sporty lifestyle for all ages. Just like in orienteering, a nice milieu and the harmony of the built and natural environment play a special role in the life of Székesfehérvár. With the continuous expansion of our green areas, our afforestation programme and, above all, the rescue of the Sóstó Nature Reserve, we have taken important steps in order to protect and enrich our natural values for generations to come.



Organising the World Masters Orienteering Championships with about one and a half thousand participants is a big task, especially considering that Hungary, in response to the unexpected request of the International Orienteering Federation, undertook it with an extremely short deadline, of which I am particularly proud. I would like to express my gratitude to the organisers and to all the contributors and supporters who take part in this work and promote the good reputation of Székesfehérvár on an international level.

I sincerely wish you, who have come to visit us à propos the World Championships, to have fun here, to enjoy the fight at the competitions and to take the time to get to know the beauties and values of the city and its surroundings.

I wish you good luck, successful racing and beautiful experiences on behalf of our community and myself.

András CSER-PALKOVICS - Mayor of the City of Székesfehérvár

Dear Guests!

It is a great pleasure and honour that such a prestigious event as the World Masters Orienteering Championships will be held here in Fejér County, around Lake Velence and in the Vértes Mountains. I believe that this competition is a serious opportunity to promote Hungary and this wonderful area, since the Vértes Mountains have everything to offer for someone who loves nature, culture and doing sports.

It is a special pleasure and honour that the capital of the Vértes Mountains, Csákvár will host two of the WMOC races. It is a great pride for us, as we have the opportunity to show that in addition to its fascinating natural endowments, our city also has a rich and long-standing history. Csákvár had been inhabited as early as 2,000 years ago, and according to the artifacts that were found, it had been a thriving settlement in modern times as well. While depopulated after the Turkish rule in the 16th century, it later began to flourish again thanks to hard-working craftsmen. Our town owes a lot to the Esterházy family - also significant in the history of our nation - who were one of the richest landowners in the country. Although the bloody 20th century did not spare our settlement either and many among our ancestors died heroically during the World Wars, we survived and recovered. From the 2000s onwards, Csákvár has once again been in its heyday: visible developments have begun, and both cultural and touristic life have been thriving thanks to infrastructural investments. A vibrant civil and sports life and a highly supportive community - this is what characterises us, the inhabitants of Csákvár.

I thank the organisers for honouring us with their trust and making Csákvár an important stop of the 2021 World Masters Orienteering Championships.

I wish everyone a successful event, a clean competition and the best of luck! We look forward to seeing you again!

Szabolcs ILLÉS - Mayor of the City of Csákvár





2. ORGANISERS, ADVISERS, JURY, CONTACT INFORMATION

PATRONS

Zoltán TESSELY - Member of the Hungarian Parliament

Krisztián MOLNÁR - President of the Council of Fejér County

András CSER-PALKOVICS - Mayor of the City of Székesfehérvár

Szabolcs ILLÉS - Mayor of the City of Csákvár

Balázs KOVÁCS - President of the Hungarian Orienteering Federation

ORGANISING CLUB AND FEDERATION

Tabáni Spartacus Sport és Környezetvédő Egyesület, is organising WMOC on behalf of the Hungarian Orienteering Federation. This is the biggest and most successful orienteering club of Hungary with more than 200 members. They have organised many national competitions, including the Spring and Autumn Spartacus Cups (previously called 7th November Cup) having big international starting fields and traditions going back to the 1950s.

ORGANISING COMMITTEE

Event Director	Ádám LENGYEL
Deputy Event Director (Public Relations)	Béla SCHNEIDER
Deputy Event Director (Permissions, Logistics)	István BUJDOSÓ
Deputy Event Director (Maps, General)	Zsófia SÁRKÖZY
Head of Event Office	Ildikó HENTES
Technical Director	Viktor MORANDINI
IT Director	Sándor AMBRUS
Event Director of the spectator races	Péter DIVIN
Human resources	Eszter LISZKA
Starts	Attila HORVÁTH
Finish	Gábor KLEMENT & Zoltán GYALOG
Marketing	Nóra WEICHINGER & Dániel PEREGI
Model Events	Mihály ORMAY
Environment	Dorottya HAJNAL & Angyalka KÖTÉL
Website	Bálint ZAI
Control set-up	Zoltán DÉNES & Viktor MORANDINI
Parking	József NAGY
Speaker	Zoltán SZLÁVIK & Gábor ÁCS

MAPPING

Chief mapper
Székesfehérvár (SQ, SF, Sprint model)
Pákozd (MF, MF model)

Csákvár (FQ, LF, LF model)

Ábel SÜLYOK
Gábor FORRAI, Miklós FORRAI
Tibor ERDÉLYI, Gábor FORRAI,
Miklós FORRAI, Ábel SÜLYOK
Áron BAKÓ, Zoltán DÉNES,
Gábor FORRAI, Miklós FORRAI,
János SÖTÉR, Ábel SÜLYOK

COURSE PLANNERS

Sprint Qualification
Sprint Final
Forest Qualification
Middle Final
Long Final

Krisztián LISZKA
Miklós FORRAI, Gábor FORRAI
József TÁLAS, Soma TÁLAS
Áron BAKÓ, Zsófia SÁRKÖZY
Dávid PEREGI, Mihály ORMAY

EVENT ADVISERS

IOF Senior Event Adviser (SEA)
National Controllers

Course controller, Sprint Qualification
Course controllers, Sprint Final
Course controller, Forest Qualification
Course controller, Middle Final
Course controller, Long Final

Jari KYMÄLÄINEN (FIN)
Áron LESS (HUN)
Zoltán MIHÁCZI (HUN)
Zoltán MIHÁCZI
Péter MOLNÁR, András SZABÓ
Zoltán GYULAI
Zoltán MIHÁCZI
János SPIEGL

IOF REPRESENTATIVES

IOF Council representative
IOF FootO Commission representative

László ZENTAI (HUN)
Unni STRAND KARLSEN (NOR)

JURY

Helge LANG PEDERSEN (DEN), Jozef POLLÁK (SVK), Unni STRAND KARLSEN (NOR)

CONTACT INFORMATION

Head of Event Office: Ildikó HENTES

E-mail: info@wmoc2021.hu

Phone / Viber: +36 70 334 57 00

Facebook Messenger: <https://www.facebook.com/wmoc2021>

IOF Eventor: <https://eventor.orienteering.org/Events/Show/7098>

3. EVENT PROGRAMME

Date	Time	Programme	Location
Thursday, 5th August	14:00-21:00	Event Centre is open, accreditation	Velence
Friday, 6th August	09:00-21:00	Event Centre is open, accreditation	Velence
	14:00-19:00	Technical Model Event	Velence
	09:00-19:00	Sprint Model Event	Székesfehérvár Strand
Saturday, 7th August	10:00-13:00	WMOC Sprint Qualification	Székesfehérvár North
	13:00-14:00	WMOC Tour - Day 1	Székesfehérvár North
	18:00-20:00	Event Centre is open	Velence
Sunday, 8th August	10:00-13:00	WMOC Sprint Final	Székesfehérvár Downtown
	13:00	Opening Ceremony	Székesfehérvár Downtown
	13:30	Prize-giving Ceremony, Sprint	Székesfehérvár Downtown
	13:00-14:00	WMOC Tour - Day 2	Székesfehérvár Downtown
	18:00-20:00	Event Centre is open	Velence
Monday, 9th August	09:00-19:00	Rest day Model Event - Forest Qualification, Middle Final	Pákozd, Ingó-kő
	16:00-20:00	Event Centre is open, accreditation	Velence
Tuesday, 10th August	10:00-14:00	WMOC Forest Qualification	Csákvár
	13:00-15:00	WMOC Tour - Day 3	Csákvár
	18:00-20:00	Event Centre is open	Velence
Wednesday, 11th August	10:00-13:30	WMOC Middle Final	Székesfehérvár, Kégl-kastély
	13:30 13:00-	Prize-giving Ceremony, Middle	Székesfehérvár, Kégl-kastély
	15:00 18:00-	WMOC Tour - Day 4	Székesfehérvár, Kégl-kastély
	20:00	Event Centre is open	Velence
Thursday, 12th August	09:00-19:00	Rest day Model Event - Long Final	Gánt
	18:00-20:00	Event Centre is open	Velence
Friday, 13th August	09:30-13:30	WMOC Long Final	Csákvár
	13:30	Prize-giving Ceremony, Long	Csákvár
	14:00	Closing Ceremony	Csákvár
	13:00-15:00	WMOC Tour - Day 5	Csákvár
	18:00-20:00	Event Centre is open	Velence
Saturday, 14th August	08:00-11:00	Event Centre is open	Velence

4. VENUE INFORMATION

HUNGARY

Hungary is a Central European country, spanning 93,030 square kilometres in the Carpathian Basin. The population is just under 10 million. Hungary joined the European Union in 2004 and has been part of the Schengen Area since 2007. The official language is Hungarian, the currency is the Hungarian forint, but euros are also accepted in many places. Payment by card is possible in most shops. Hungary is an OECD high-income economy and has the world's 54th largest economy by nominal GDP, and the 53rd largest by PPP. It ranks 45th on the Human Development Index, mainly due to its social security system, universal health care, and tuition-free secondary education.

Hungary's rich cultural history includes significant contributions to arts, music, literature, sports, science and technology. It is the thirteenth-most popular tourist destination in Europe. In 2017 15.8 million international tourists visited attractions such as the largest thermal water cave system in the world, the second largest thermal lake, the largest lake in Central Europe and the largest natural grasslands in Europe.

SZÉKESFEHÉRVÁR

The city of Székesfehérvár with 97,000 inhabitants is Hungary's ninth largest city. It is located only 60 km / 45 minutes away from Budapest. Székesfehérvár held a central role in the Middle Ages as a royal residence and as the capital of the Kingdom of Hungary and the first kings of Hungary were crowned and buried here. Castle building remains a living tradition: the Bory Castle on the outskirts of the city was hand built in the 20th century and welcomes visitors. Székesfehérvár is a central hub of Hungarian sport with iconic clubs like Videoton (football) and Alba Volán (ice hockey).

VELENCE

Velence is a small town and a holiday resort with 5,500 inhabitants, lies at the northeast tip of Lake Velence and at the foot of the Velence Hills. Obviously, its main attraction is the lake itself: it is Hungary's third biggest natural lake and covers an area of 26 km². It is one of Europe's warmest lakes with an August water temperature of 26 °C (due to its average depth of only 1.5m). Budapest is only half an hour's drive away.

CLIMATE

August is a warm month in Central Hungary, it brings some of the sunniest days with an average of 13 hours of sunshine. During the WMOC week, temperatures during the day climb to around 27°C and often as high as 30°C, while at nights fall to 15°C. It is a bit cooler in the forest. Average August rainfall is 71.1mm (15 mm during the WMOC week). Expect to see some light to moderate rain and a chance of thunderstorms in the afternoons. August is quite calm with an average wind speed below 10 km/h. Humidity is also low during August.

Weather forecasts for [Székesfehérvár](#) (SQ & SF), [Csákvár](#) (FQ & LF) and [Pákozd](#) (MF) can be checked on <https://www.yr.no>

HYGIENE

Tap water in Hungary is drinkable unless otherwise specified. Outbreaks of gastric infections caused by food poisoning are rare. Food items that are sold in the shopping outlets at the arena will, in general, be wrapped to prevent contamination. Hand washing before meals and after toilet visits is strongly recommended. Hand sanitisers will be available throughout the arena. You may wish to bring a small disinfectant dispenser or disinfectant towels to the arena.

TOURISM

We have collected a number of interesting attractions for you around Székesfehérvár and Velenice. They are available through the following map: https://www.google.com/maps/d/edit?mid=10FYa2ifgObOeOwwWv_rFpHal5mawetDA&usp=sharing

CURRENCY / PAYMENT

Hungary's official currency is the forint (HUF) and 1 EUR is worth around 350 HUF. Payment by credit card is possible at most shopping outlets and restaurants, but may not be possible in smaller shops. Cash payment in EUR may be possible in some bigger shopping outlets, at the Event Centre and in the shops selling orienteering equipment.

FOOD

Typical Hungarian food is heavy on dairy, cheese and meat, similar to that of neighbouring Czech, Polish, and Slovak cuisines. Hungarian food is often quite hot (spicy)! Chicken, pork and beef are common, while turkey, duck, lamb, fish and game are also eaten but not as frequently (mostly on special occasions). Hungarian wines are famous and wine-tasting should not be missed! If you want to know more about Hungarian cuisine, please visit: https://en.wikipedia.org/wiki/Hungarian_cuisine.

Budapest is the country's food capital with international cuisine and fine dining, but you can find many good restaurants with terraces to sit, eat and drink almost anywhere in the countryside. A typical meal costs EUR 8 and upwards, while you can get a pizza, kebab or other fast food for EUR 3 to 5. International cuisine is available in cities and towns, while smaller villages are more likely to offer Hungarian food.

VISA

You don't need a visa when entering Hungary if you are a citizen of a European Union country. Other international travellers may be required to hold a Hungarian visa prior to travel to Hungary, depending on your citizenship. For visa waiver agreements, please visit the homepage of the Ministry of Foreign Affairs of Hungary at <https://konzuliszolgalat.kormany.hu/visa-waiver-agreements>

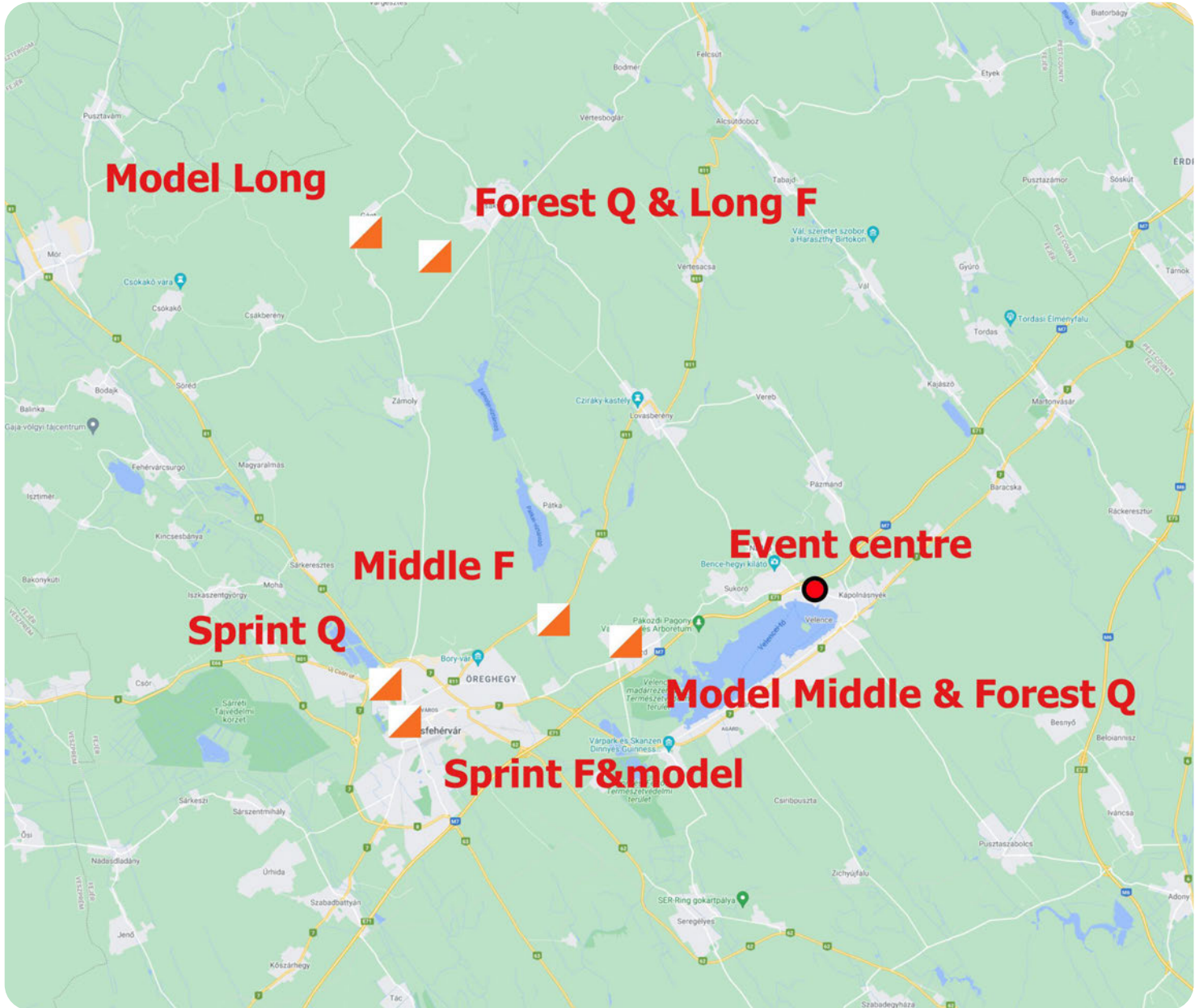
We decided not to publish any COVID-19 related info about entering Hungary in this Bulletin 2 as it may change until the event. Please consult the WMOC 2021 webpage for the actual situation at <https://wmoc2021.hu/en/covid-19/covid-19-updates/>

HEALTH CARE / HOSPITALS. INJURY AND ILLNESS OUTSIDE OF COMPETITIONS

Emergency healthcare is free in Hungary. However, private health insurance is strongly recommended to ensure appropriate care throughout your stay in Hungary, as well as repatriation if needed. Competitors from EU countries are advised to bring an EHIC card. In case of acute illness or injury outside competitions, consultation with a healthcare professional is provided after calling 112 depending on the severity and acuteness of the condition. In general, admission to or evaluation at a hospital requires previous phone contact by using 112. Try contacting the Event Office if this doesn't work.

	Adress	Phone Number	GPS
PHARMACIES			
Velence Pharmacy	2481 Velence, Balatoni u. 65.	+36-22-589-524	47.22368, 18.65970
Vörösmarty Pharmacy Kápolnásnyék	2475 Kápolnásnyék, Fő u. 18.	+36-22-574-050	47.23891, 18.67399
Újtelepi Pharmacy	2481 Velence, Iskola u. 2.	+36-22-472-074	47.22380, 18.66934
Benu Pharmacy	8000 Székesfehérvár, Hunyadi u. 34.	+36-22-507-677	47.19064, 18.43594
PatikaPlus Pharmacy (Alba Plaza)	8000 Székesfehérvár, Palotai út 1.	+36-22-501-194	47.19016, 18.40661
PatikaPlus Pharmacy (Fehér Palota)	8000 Székesfehérvár, Palotai út 6.	+36-22-501-670	47.19032, 18.40513
MEDICAL SERVICE			
Velence central medical center	2481 Velence, Balatoni út 65.	+36 22-311-104	47.22231, 18.65617
Velence clinic		+36-22-589-515	
HOSPITAL			
Szent György Hospital	8000 Székesfehérvár, Seregélyesi út 3	+36-22-535-500	47.19276, 18.43473
Szent György Hospital outpatient treatment	8000 Székesfehérvár, Hunyadi u. 2	+36-22-535-540	47.19175, 18.43849

5. OVERVIEW MAP



Link to interactive map: <https://www.google.com/maps/d/viewer?mid=1bfbS7W2WU5i17iUqnrXK2vy9UWElHRuD&usp=sharing>

6. EVENT CENTRE, EVENT OFFICE, ACCREDITATION

The Event Centre is located in the Entz Ferenc Agricultural Secondary School in Velence. The school has big halls and a square for accreditation, etc. and a huge parking area also for buses inside the complex. It also serves as the organisers' headquarters. There is plenty of space for meetings and exhibitions. The Event Centre is only 2 mins by car from the nearest exit of the Budapest - Székesfehérvár - Balaton motorway (M7). Lake Velence with an open-air bath and a huge campsite is just a 10-minute walk away. Most Event Centre services are accessible online throughout the event to insure COVID-19 compliant operations.

The address for the Event Centre is 2481 Velence, Ország út 19.

GPS coordinates: 47.24258, 18.64774

HOW TO GET TO THE EVENT CENTRE USING PUBLIC TRANSPORT

From Budapest Airport

At the airport take bus 100E to Kálvin tér. There, change to metro line M4 and go to Kelenföld vasútállomás. Here, take the train (S30, Z30, G30, G43...) in the direction of Székesfehérvár and get off at Velence.

From Székesfehérvár

By train: from Székesfehérvár vasútállomás (railway station) take the train (S30, Z30, G30, G43) in the direction of Budapest, Déli pályaudvar and get off at Velence.

By bus: from Székesfehérvár autóbusz-állomás (bus station) take bus (707, 747, 748, 749, 757) and get off at Velence, Templom köz, then walk 400 metres to the Event Centre.

From Velence railway station

From Velence, vasúti megállóhely (railway station) bus stop take bus (707, 757) towards Sukoró-Pákozd-Székesfehérvár and get off at Velence, Templom köz then walk 400 metres to the Event Centre or walk 2.2km directly.

Note: You may want to get off at Kápolnásnyék railway station instead of Velence (the railway stop closer to Budapest and 3.7 km from the Event Centre) and change to bus no. 748 or 749 towards Velence-Sukoró-Pákozd-Székesfehérvár and get off at Velence Templom köz, then walk 400 metres to the Event Centre. This is because buses operate approx. every hour, and 748/749 might be quicker than 707/757. We recommend menetrendek.hu for checking timetables.

WMOC Event Centre Velence, Ország út 19.



EVENT OFFICE

The Event Office is the information centre for WMOC 2021.

At the Event Office, you can collect your accreditation package with

- Your start number bib(s) and safety pins
- Your SI-card if rented
- Pre-ordered O-shirt
- Maps for the model events (except for the Long Final model event)
- Pre-ordered parking ticket

ACCREDITATION

You can pick up your accreditation package at the Event Office in the Event Centre in Velence by showing some kind of ID / permission from the person whose bag you are picking up. On the day of the Sprint Qualification and Forest Qualification races, you can also collect your accreditation package at the Arena Event Office. You cannot pick up your accreditation package in the arenas on the Final days, nor at the model events.

Accreditation packages for tour operators can be collected for the whole group. The bags for the group will be packed separately ready for pickup. If you are not a tour operator and you want to pick up the accreditation packages for other competitors, please bring some kind of ID / permission for that person.

At the Event Office, you will also be able to

- Get information about public transport
- Buy WMOC 2021 merchandise
- Enter for WMOC Tour races

In the first days of the WMOC, the Event Office will be open for face-to-face contact in the Event Centre. On race days, the Event Office will be open for face-to-face contact in the arenas. Also during the opening hours, the Event Office can be contacted by phone at this number: +36 70 334 57 00

The Event Office can also be contacted through e-mail at info@wmoc2021.hu, but immediate answers may not always be possible.

EVENT OFFICE OPENING HOURS

Thursday, 5th August	14:00-21:00	Velence (accreditation also)
Friday, 6th August	09:00-21:00	Velence (accreditation also)
Saturday, 7th August	09:00-14:00 18:00-20:00	Arena Székesfehérvár Stadium (accreditation also) Velence
Sunday, 8th August	09:00-14:30 18:00-20:00	Arena Székesfehérvár Downtown Velence
Monday, 9th August	16:00-20:00	Velence (accreditation also)
Tuesday, 10th August	09:00-15:00 18:00-20:00	Arena Csákvár (accreditation also) Velence
Wednesday, 11th August	09:00-15:00 18:00-20:00	Arena Székesfehérvár, Kégl-kastély Velence
Thursday, 12th August	18:00-20:00	Velence
Friday, 13th August	08:30-15:30 18:00-20:00	Arena Csákvár Velence
Saturday, 14th August	08:00-11:00	Velence

CHANGES AND LATE ENTRIES

Normal entry for WMOC classes closed on 12th July 2021. Late entries are possible after 12th July 2021, but only where there are vacancies in the start list. New entries (for a EUR 30 surcharge) and changes can only be made by email, through info@wmoc2021.hu.

Name changes or SI-number changes after 13th July 2021 cost EUR 10.

It is also possible to enter for the WMOC Tour (on race days as well), either at the Event Office or at the finish arenas.

PAYMENT

You will only be able to pick up your accreditation package if your full payment has been received by the organisers. Outstanding debts can be paid on the spot in EUR.

CANCELLATION

Unfortunately we are not able to refund your payment after the last entry deadline of 12th July 2021. But if you are unable to participate we would still be pleased to know. Please notify us on info@wmoc2021.hu.

WMOC 2021 MERCHANDISE

Name	Price	Remark
O-Shirt	45 €	Available in limited number
T-Shirt	15 €	Available in 5 colours
Mask	3 €	White
Baseball cap	7 €	One size
Headband	8 €	Available in 2 colours, limited number
Compass & SI holder	4 €	Available in limited number
Glass drinking bottle	4 €	Available in 3 colours
Picnic Blanket	30 €	Limited quantities

1 EUR = 350 HUF. Payment is only possible in cash!

PRESS AND MEDIA

Basic press facilities are available on request in the Event Centre in Velençe and in the competition arenas. You should provide your own internet! For further information and press accreditation, please contact the Event Office at info@wmoc2021.hu by 3rd August 2021.

7. CEREMONIES AND SOCIAL ACTIVITIES

OPENING CEREMONY - SUNDAY 8TH AUGUST 13:00-13:30

The Opening Ceremony of WMOC 2021 will take place at the Sprint Final arena in Székesfehérvár Downtown (GPS: 47.18970, 18.40798). Participants (competitors, organisers and guests) are asked to gather at the stage in the arena at 12:50. The national flags will be carried in the parade, and a short programme with music and speeches will follow.

PRIZE-GIVING CEREMONIES

Prize-giving ceremonies will be held at the respective arenas after each of the three Finals days. IOF gold, silver and bronze medals will be awarded to the three best-placed competitors in each age group for men and women in the A-Finals. Before the start of the prize-giving ceremony, all medal winners will be invited to approach the ceremony podium. The time for this will be announced by the speaker.

For each age group the three best men and women respectively will be escorted to the podium as one group in order for all 6 medallists to receive their medals at the same time.

BANQUET

No banquet will be held.

CLOSING CEREMONY

The closing ceremony will be held after the Long Final race in the arena at Csákvár. The IOF flag will be handed over to the 2022 WMOC organisers from Italy.

8. TRANSPORT AND ACCOMODATION

TRANSPORT PROVIDED BY WMOC ORGANISERS

Transport provided by the WMOC organisers will be communicated individually for those, who requested this service until 31st July 2021. Note that we are not able to accept any further requests!

PARKING PERMIT

If you have booked a parking permit, you will find it in your accreditation package. Please check that it is there. If you arrive at a forest parking area with no parking permit, you will have to pay a higher parking fee (EUR 30 for cars or EUR 100 EUR for buses) or you may even be rejected if the parking is fully booked. Please note that the parking permit only gives permission to use the designated parking spaces during the races. We do not have permission to allow mobile homes to use the parking areas before or after the races - you can use the camping site in Székesfehérvár (GPS: 47.20393, 18.40021).

SENIOR TRANSPORT SERVICE - for M/W 85, 90 & 95 in the Forest Qualification and Long Final races

As a courtesy to our oldest competitors, the organisers are providing free transport for M/W 85, 90 & 95 competitors from the Forest Qualification and Long Final parking areas to the arena and from the arena to the start. Details about pick-up are given in the day-by-day information below.

LAST MINUTE ACCOMMODATION BOOKING?

Problems with your accommodation? Contact us in the Event Office and we will see what we can do to help you.

9. GENERAL TECHNICAL INFORMATION

COMPETITION RULES

The competitions will be conducted according to the IOF Competition Rules as of 1st January 2021 and the 2021 version of the WMOC Manual. Copies of these can be downloaded from <https://orienteering.sport/orienteering/competition-rules/> and <https://orienteering.sport/orienteering/internal/event-organising/organising-wmoc/>

TRAINING

Maps of areas similar to WMOC areas for self-training can be provided by the organisers - contact info@wmoc2021.hu. The organiser will not provide controls, etc. before WMOC 2021.

EMBARGOED AREAS

Embargoed areas are shown in IOF Eventor: <https://eventor.orienteering.org/Events/Show/7098> There is a hard embargo for forest terrains (basically no entry allowed) and a soft embargo on the Sprint terrains. This means that staying in the Székesfehérvár embargoed areas is possible until 2 hours before the start of the respective race, but you must not orienteer (reconnoitre) in the embargoed area or to test route choices running or walking with a map. Access to the embargoed areas, unless following instructions from the organisers, will lead to disqualification. Also, competitors are not allowed to re-enter the Sprint Qualification or Finals areas after they have finished their race and before the last WMOC competitor has finished her / his race.

The embargo for the Forest Qualification area will remain until the end of the Long Final race. Still, it's possible to visit the Long Final model event area as defined by the model event map on Thursday, 12th August.

PREVIOUS MAPS OF COMPETITION AREAS

Old maps of the competition areas: <https://wmoc2021.hu/en/competition/embargoedareas/>

MODEL EVENTS

The model events will show examples of the terrain types, the map quality, the control features and the positioning and descriptions of the controls. Further information about the model events is in the day-by-day information.

ELECTRONIC PUNCHING SYSTEM

The SPORTident punching and timing system will be used. Touch free mode (Air+) will be activated in addition to classic SPORTident punching. Both regular SI-cards and SIAC cards can be used. Without pre-registration the hire charge is EUR 5 for one day or EUR 20 for the whole week for a SIAC card; EUR 2 for one day or EUR 10 for the whole week for a regular SI-card. EUR 70 will be charged for any lost or missing card.

The SI card number that you provided in your entry has been entered into the IT-system and appears on your start bib. If for any reason you will be using a different SI-card, you must notify the organisers of the new SI-card number by emailing it to info@wmoc2021.hu not later than 25th July 2021. Change of SI-card after 25th July can only be done in the Event Office for a fee of EUR 10.

SI-card numbers will be checked against competitor names as part of the start procedure.

In the unlikely situation of SIAC failing to register in touch free mode, the competitor must make a manual punch by placing the SIAC chip into the SPORTident station. In the unlikely situation of an SI station failing to respond with direct punch (neither a feedback beep nor a light feedback signal), the competitor must punch manually on the map using the pin-punch on the control stand.

If you have pin-punched any controls on your map, you must hand your map in at the Problems Desk before leaving the Finish area and record which control is pin-punched.

As most competitors will be using touch free SIAC cards, most controls will only be equipped with one SPORTident stations. Please pay attention that the feedback signal you hear and see is the feedback of your own SI card punch.

Note that at the recent European Orienteering Championships in Switzerland, where each participant ran with their own SIAC cards, quite a few SIACs failed to work. The lifetime of the SIAC battery is influenced by how it is used. In normal use it will work for up to four years and about 100 clearing cycles. A SIAC battery test station will be available at the WMOC 2021 technical model event as well as during the Start procedure at each race.

More information on how / where to change SIAC batteries is available at: <https://www.sportident.com/siacservice/index.php?lang=en&point=>

FORGOTTEN OR WRONG SI-CARD?

If you happen to arrive at the start without your SI-card or with a wrong SI-card, you can borrow an SI-card (not SI Air+) from the start staff. Rental payment will be paid later. Expect to have a slightly longer checkout procedure in the Finish if this happens.

CLOTHING

Competitors can make their own choice of clothing and footwear, except that shoes with spikes or metal dobbs are not allowed (nor are they practical) for the Sprint races. In rainy weather, slopes may become slippery and tracks may become muddy; trail running shoes or orienteering shoes are recommended for the forest competitions. Shorts and running shirts are recommended for Sprint races. Regular orienteering clothing including full leg protection is recommended for the forest races as there are thorny bushes in the terrain.

RESPONSIBILITY / INSURANCE

Liability waiver

You compete at your own risk. The organisers can accept no liability for injuries or sickness occurring either during the competition or during transport to and from the competition.

COVID-19 (as of 19th July 2021)

As the situation may develop between the time of publishing this bulletin and WMOC 2021, a separate COVID bulletin will be published on 3rd August 2021 on the event website and in IOF Eventor.

The WMOC 2021 organisers are committed to the health and safety of the competitors, but at the same time, would like to assure that you enjoy your time spent in Hungary with minimal restrictions.

COVID-testing before departure can be arranged through the Event Office with an external supplier. Booking needs to be done 3 days in advance.

SAFETY AND RESPONSIBILITY

The organisers ask that competitors use common sense in ensuring their own safety at all times. All competitors who take part in the WMOC 2021 and WMOC Tour (including model events) must consider any risks and take their own safety precautions. They will be totally responsible for any injuries which might occur to them during the races as well as for any accidents on the way to and from any event during the WMOC week.

ALL PARTICIPANTS ARE RECOMMENDED TO TAKE OUT AN ACCIDENT INSURANCE POLICY (INCLUDING COVID-19 RISKS) THAT, IN THE EVENT OF AN ACCIDENT, WILL COVER ALL ADDITIONAL FEES FOR RETRIEVAL, RESCUE AND TRANSPORT TO THE HOSPITAL.

FAIR PLAY

The organisers encourage all competitors to act with fairness. , competitors must not speak to each other during the races (IOF Competition Rules 26.1 and 26.2).

USE OF EQUIPMENT WITH GPS

IOF Competition Rule 21.4 applies: Competitors must not use or carry telecommunication (voice or text) equipment between entering the pre-start area and reaching the finish in a race, unless the equipment is approved by the organiser.

GPS-enabled devices (watches etc.) can be carried provided that:

- they have no map display
- they have no telecommunication ability
- they are not used for navigation purposes.

ANTI DOPING

IOF Anti-doping rules apply, <https://orienteering.sport/iof/anti-doping/>

ENVIRONMENT PROTECTION, SUSTAINABILITY

Protecting the environment and sustainability have been extremely important to the organisers of WMOC 2021. Due to the unstable COVID-19 situation we needed to limit some of our plans, but it's still a priority to minimise the event's waste production.

We kindly ask the participants to:

- use the correct recycling bins for selective waste collection
- do not distribute flyers. We provide a board in the Event Centre, where everyone can put their flyers. Please use that instead of putting more pressure on the environment!
- share your car with other competitors, as this will lower our total CO2 emission and will get us closer to become carbon neutral.
- save water
- don't release non-natural chemicals into the nature

CHILD CARE

We can look after your children while you are out running. Children must be 3 years or older and nappy free. Please notify the Event Office (info@wmoc2021.hu) by 25th July at latest if child care is needed.

BAGGAGE STORAGE

It is possible to leave your belongings in a supervised baggage area next to the Event Office in all arenas. The baggage storage area will have the same opening hours as the Event Office. You do not need to book luggage storage in advance.

START NUMBER BIBS

All competitors will receive two number bibs in their accreditation package. In the Sprint competitions, one has to be worn so that the number is visible on the chest and the other has to be worn similarly on the back. In the forest competitions one has to be visible on the chest as for Sprint and the second bib can be kept as a backup in case the first one is lost. Safety pins will be handed out with the bibs.



NAME CLUB COUNTRY

SI: 8889993

TOUR GROUP

START: 2	START: 1	START: 2	START: 1	START: 1
M65- LF	M65- MF	M65-1 11:41 FD	M65- SF	M65-2 11:00 SD

Please complete the information on the back side of one of your start bibs with health data and emergency contact. This information could be helpful to the medical team in an emergency situation.

Lost bibs can be replaced at the Event Office for a charge of EUR 5. Start details for the Sprint Qualification and Forest Qualification races are printed on your start bib. You are requested to enter the details for the three final races (start number and your start time), when they become available.

The ten last starters in each A-class Final will get an additional start bib (numbered 1-10) for the Final in question. The original bib must still be worn and be visible below the new one. These start numbers can be collected by self-service at the start, near the entry to the start proper.

START LISTS

Start lists will be published in IOF Eventor and on the WMOC 2021 webpage as soon as they are available. Start lists will be displayed in the arenas and at the Starts in all races. Start lists will also be displayed in the Event Centre. The start lists will also be shown on the TV screens in the arenas until the first results are displayed.

Start lists for the Sprint Qualification and the Forest Qualification races

The start draws, and heat allocation are based on IOF Competition Rule 12.22. For the qualification races, the competitors of each class are allocated to parallel heats by random draw. The heats of one class shall be as equal in size as is mathematically possible and no heat shall have more than 80 competitors. There shall be as few heats as possible; if there are 80 competitors or fewer, there is only one heat for that class. Competitors from the same Federation and placegetters from recent WMOCs shall be equally distributed among the heats. (IOF Competition Rule 12.22.) The heats are indicated by numbers after the age class, e.g. M65-2 is the second heat for M65 runners. The number of runners in each heat is as equal as possible, up to a maximum of 80. Start lists for the Sprint Qualification and the Forest Qualification races are available from IOF Eventor: <https://eventor.orienteering.org/Events/Show/7098> the WMOC 2021 website www.wmoc2021.hu

How to qualify for the Sprint Final and the Middle Final

The qualification system is explained in the IOF FootO Competition Rule 12.23. Qualification is based on your position in the relevant qualification race. The highest placed competitors from each qualification heat qualify for the A-final of the class. The next best competitors from each qualification heat qualify for the B-final and so on.

If there are between 20 and 160 entrants in a class, then they will be split as equally as possible between an A-final and a B-final, with the A-final having at least half the total number of entrants.

If there are fewer than 20 entrants, all compete in the A-final.

If two or more competitors tie for a place in a final, all of them qualify for that final.

Competitors who start but are not placed, or who do not start in the qualification race, may start before the qualified runners in the lowest ranked final of their class, but will appear in the result list as not placed.

Sprint Final: you must complete the Sprint Qualification race successfully to run competitively in the Sprint Final.

Middle Final: you must complete the Forest Qualification race successfully to run competitively in the Middle Final. If you are disqualified or fail to complete your course in the Forest Qualification race, you will participate in the lowest Middle Final of your class. You will be listed as having non-competitive status in the Middle Final results. However, your Middle Final result will be treated as competitive in determining the Long Final start lists. So it is still possible to gain a Long A-Final start place even if you are not placed in the Forest Qualification race.

Start lists for the Sprint Final and the Middle Final

Start lists will be available via IOF Eventor and the WMOC 2021 website. We strive to have these available by 19:00 the day before the respective races.

How to qualify for the Long Final

The qualification system is explained at length in the IOF FootO Competition Rule 12.24:

The Long distance finals have the same composition as the Middle distance finals, except that some competitors are promoted to a higher final and some are relegated to a lower final according to their result in the Middle distance final.

Purely for the determination of promotion and relegation in this rule, any competitors who successfully completed the lowest ranked Middle distance final are regarded as having been placed, even if they were not placed in the qualification race and hence appeared in the Middle distance result list as not placed.

If there is a single Middle distance A-final in a class, there shall just be a single Long distance A-final with the same composition.

If there are only two Middle distance finals (A and B) in a class, the bottom 10% (rounded down) of the A-final are relegated to the B-final. The number in the A-final is brought back up to the number in the Middle distance A-final by promoting the next best-placed competitors from the B-final.

If there is a tie of two or more competitors in the Middle distance final and they are in the last qualifying place for promotion, they are all promoted. Where there is a tie in the last qualifying place for relegation, all are relegated.

The top 4 from each qualification heat are guaranteed personal places in the Long distance A-final, if they start in the Middle distance final, but regardless of their performance in that race. Any who fail to qualify for the A-final according to the criteria above are added to the A-final as extra starters. If any failed to start in the Middle distance final, the guaranteed place is simply lost.

It is not necessary to have been placed in the Middle distance final in order to be placed in the Long distance final.

In each Long distance final, the start order is in groups in reverse order of the Middle distance final in which the competitors ran. For example, where there are two Middle distance finals, in the Long A Final those promoted from the Middle B Final start earlier and those who ran the Middle A final start later. Within those groups the order is the reverse of their positions in those finals, i.e. the fastest starts last. Any who were not placed in a Middle distance final start within their group in random order before those who were placed.

Start lists for the Long Final

Start lists will be available via IOF Eventor and the WMOC 2021 website by 12:00 on Thursday 12th August.

MAPS

All maps are printed on Pretex waterproof paper and will not be in plastic bags. Maps are drawn according to ISOM 2017-2 and ISSprOM 2019.

For competitors in classes M/W 35 up to M/W 55 inclusive, the scale of all the Sprint maps is 1:4,000, contour interval 2.5 metres; the scale of all the forest maps is 1:10,000, contour interval 5 metres.

For competitors in classes M/W 60 and older, the scale of all the sprint maps is 1:3,000, contour interval 2.5 metres; the scale of all the forest maps is 1:7,500, contour interval 5 metres.

MARKED ROUTES, AREAS OUT OF BOUNDS AND MARKING OF OBSTACLES

Marked routes and areas out of bounds in the terrains are marked with red-and-white tapes. Hazards (like wires on the ground) that can be passed are sometimes marked with an orange tape in order to draw the competitor's attention to the obstacle.

WARM-UP MAPS

Warm-up maps will be available at the exit of the arena for all races, except for start 2 for the Sprint Final (where there is no warm-up map available). Warm-up maps have the same scales as the competition maps, but generally show different terrain types, than the actual race map. There are no controls on the warm-up maps. Warm-up maps also show the way to the start.

CONTROL DESCRIPTIONS

IOF Control descriptions (version 2018) are printed on the front side of all competition maps. Loose copies of the control descriptions (not water resistant) will be available in the start lanes as part of the start procedure. Competitors have 1 minute to choose and prepare their control descriptions but no tape or other equipment is provided. The maximum size of loose control descriptions is 26 controls - 180 x 60 mm. Each grid square has a 6 mm side. Courses with fewer controls will have proportionally shorter sheets.

Special symbol

Tank pit (only one control site in the Forest Qualification race). See a detailed description about the object there. Note that this is NOT demonstrated in the model event (as there is no such object on the model event map)!



CONTROL SETUP

Each control site is equipped with

- one control flag
- one or two electronic punching units (SPORTident stations) in Air+ mode. There will be more than one punching units in high traffic controls, e.g. the last controls
- one pin punching device for use if SPORTident fails

The control code is shown on the side of the control stand and the top of the SPORTident units. The code numbers range between 31 and 160. There are many controls out in the terrain, please check your control codes carefully!

Examples of the control stands will be available in the technical model event in Velence.



Sprint controls



Forest controls

START PROCEDURE

You are responsible for following the correct marked route to your start area. The competition area is out of bounds until your start time. All the starts will be silent; it is your responsibility to be there on time. If you don't have a bib number or an SI-card, you will not be allowed to start. If you lose or forget your bib number and/or SI-card, you can get a replacement in the Arena Event Office.

CLEAR AND CHECK

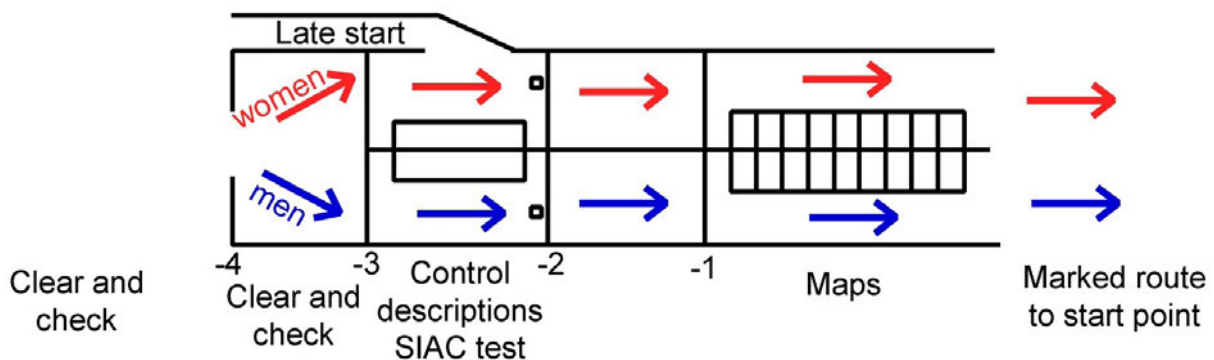
Every SI-card must be cleared and checked before each race. Stations to clear SI-cards will be in the pre-start areas, near the entrance to the -4 min start box and in the -4 start box. Insert your SI-card into the "clear" unit and wait a few seconds until the unit beeps and flashes, verifying that previous data has been erased.

After clearing your SI-card, place the SI-card into a "check" unit, where the "check" unit will beep and flash immediately, confirming that the SI-card is ready to be used.

If you have a SIAC, an additional SIAC test will be available in box 2. To test your SIAC, place it near the SIAC test station until it flashes red and your SIAC emits a beeping noise. Start staff will be present to assist you throughout the process.

START BOXES

In the start area, competitors will pass through four consecutive start boxes and remain one minute in each one.



Box 1

When the clock in front of the first start box (-4) displays your start time, you enter the first box. This will be 4 minutes before you start. At this point your bib number, SI-card number and start time will be checked. If you have not already cleared your SI-card, you can also do it in this box, before checking it using the check box.

Box 2

In the second box, you can collect a loose control description for your course, but no tape or other equipment will be provided for environmental reasons. Please note that it is your responsibility to take the right loose control description! The SIAC test is also located in Box 2.

Box 3

The third box is for additional checks and control.

Box 4

In box 4 you walk to the map folder which displays class and check that the class on the map is correct on the front of the map. 5 seconds before the start, a clock will start beeping. The last beep is the start beep and is longer than the others. Your race starts at the start beep. It is your responsibility to take the correct map, please take only one.

From box 4 there is a marked route to the start point. The start point is marked with a control flag in the terrain and a start triangle on the map. The marked route from box 4 to the start point must be followed. The route from box 4 to the start point is also marked on the map and control description, ISOM 2017-2 - 702 Map issue point - is used on the map.

LATE START

If you get to the Start after your proper start time you must report to the **late start lane**, where an official will tell you where to go. It is still your responsibility to clear and check your SI-card. At the control description and competition map pick up, you will be assisted by an official. You will be told when you can start which will either be immediately or at the next available half-interval (IOF Competition Rule 22.9.). Your start time will be recorded by punching a dedicated start SI-unit.

The results of competitors who start late will be based on their original start time with no time compensation. Only if their lateness is due to the fault of the organiser will your actual (punched) start time be used (IOF Competition Rule 22.10.).

If you are late, whether it is your fault or the organiser's, **do not discuss this with the start officials**, as they can make no decisions about this. Instead, if you think the organiser is responsible, make a complaint after finishing the race at the Problems Desk before leaving the Finish area.

SAFETY MEASURES DURING THE RACE

A large number of competitors will be in the terrain at the same time, especially during the Sprint races. Please be careful when running around corners and through doors in order not to hurt yourself, other competitors, pedestrians or cyclists.

Please take special care when running around restaurant terraces in the Sprint Final race - they are marked with symbol 714 - temporary closed area (area overprinted with 50% purple).

There are plenty of rabbit burrows (holes) in the Middle distance terrain, which are not marked in any way. Watch out to prevent a sprained ankle!

LAST CONTROL AND RUN-IN

The last control is the same for all competitions, except for the Sprint Final, and is a red cow - see below (marked on the map as a black x). In the Sprint Final race, the last control is the side of an outdoor artwork (see below). From the last control, you must follow the marked route to the finish line.



FINISH PROCEDURE

At the Finish

All Finish units also work in Air+ mode, so touch-free punching of the Finish units is also possible. Those having a traditional SI-card, have to manually punch one of the four Finish units. You must report to the Finish area, even if you do not complete your course. Your bib number must be clearly visible when you pass the Finish line.

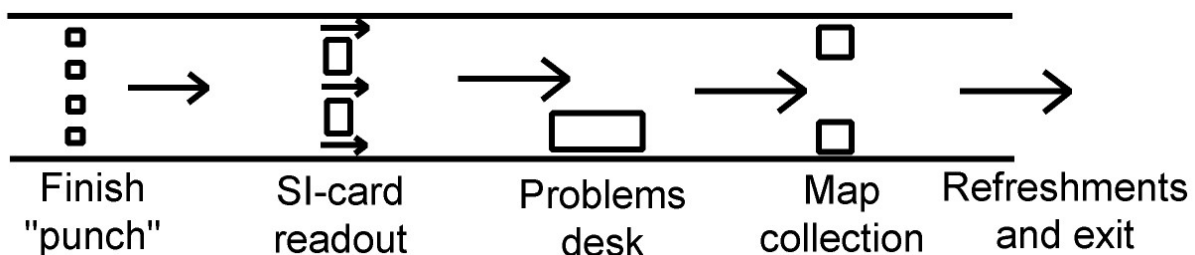
After the Finish line

The schematic flow diagram below shows how the Finish system works. After the Finish line you will be directed to a readout station to read out your SI-card. The system will verify if you have visited all controls on your course in the correct order. Individual split times will be given to each competitor after readout. You must download your SI-card, even if you have not completed your course. If you do not download, you will be considered "missing in the forest" which may cause a search in the forest for you.

If you are using a rented SI-card and this is your last race, you must return your SI-card to the staff.

You should report to the Problems desk if the readout displays an unexpected problem with your punches. You should also contact the Problem desk if you started late and believe that it is the organiser's fault.

You must hand in your competition map before leaving the Finish area (until the last WMOC start).



MAP RECLAIM

New competition maps will be handed out after the last WMOC start of each race at the Arena Event Office. Used competition maps can also be retrieved, but this is not recommended because of possible COVID-19 infection. Used competition maps will be collected in two big boxes (one for men and one for women) without sorting.

MAXIMUM RUNNING TIME

- Maximum running time for both Sprint races: 60 minutes
- Maximum running time for the Forest Qualification race: 180 minutes
- Maximum running time for the Middle Final race: 120 minutes
- Maximum running time for the Long Final race: 240 minutes

REFRESHMENTS

In the event of hot weather, remember to increase your fluid intake before, during and after the race to optimise your performance and prevent heatstroke.

Drinking water will be available at most of the starts (see day-by-day information) and in the Finish area in all races. The number of water stations on the courses is also shown in the day-by-day information. The water stations in the forest will be supervised by officials. Locations will be shown using the standard drink cup on the map or at specific control sites as indicated by the cup symbol in column H of the control description.

The water provided is pure and drinkable. We'll try to keep it cold.

ARENA CATERING

Arena catering will be available at all arenas except for the Sprint Final race, where different vendors operate in and around Alba Plaza. Arena catering opens on all competition days at 8.30 and closes at the end of the competition and will offer soft and alcoholic drinks and a selection of warm and cold dishes which will vary between days. All finish areas offer free drinking water. Fruit and snacks will also be sold.

PAYMENT

Arena catering will accept payment by the following methods: Hungarian cash money (HUF), euros (biggest note accepted is 50 EUR), Visa and Mastercard.

DIETARY RESTRICTIONS

There will be a vegan option available for every day and a smaller selection of products for participants with lactose or gluten intolerance. Participants with other dietary restrictions are welcome to contact arena catering personnel and they will do their best to assist you.

ORIENTEERING SHOPS

Sports and Orienteering shops will be present at the Event Centre on 5th and 6th August and at all arenas.

CLOTHES TRANSPORT FROM START TO ARENA

There is no transport of clothes from the Start area to the arena. This may be reconsidered if the weather is extreme, and additional information will be given through the arena speaker.

LOST AND FOUND

Items found in the arenas should be handed in at the Lost and Found counter by the Event Office.

SHOWERS

There are no showers in the arenas. There will be possibilities for basic washing in the forest arenas. Environment friendly soaps will be available.

COMMENTARY AND LIVE COVERAGE

Race commentary will be provided by Zoltán Szlávik (HUN) and Gábor ÁCS (HUN). Commentary will be in English with some information given in Hungarian.

Live results will be updated throughout the races in the arenas on www.wmoc2021.hu and <https://liveresultat.orientering.se/>. News, photos and video will be published via the WMOC Facebook page and the event website. Please note that you may encounter photographers anywhere in the competition areas - maybe even a video drone.

RESULT SERVICE

Individual split times will be given to each competitor at the readout. Live provisional results will be on display (TV screen) at each finish arena. You can also view results on your own devices - such as smart phones, tablets or laptops - via <https://liveresultat.orientering.se/>.

The official results will be displayed as soon as possible after the races on IOF Eventor and through the event website. Split times (Winsplits) and RouteGadget will also be made available.

DISQUALIFICATION

You will be disqualified if you miss one or more controls or do not visit the controls in the correct order. Competitors who fail to respect signs and other instructions from the organiser may also be disqualified.

In the Sprint races, entering forbidden areas or crossing forbidden obstacles will lead to disqualification.

Please note IOF Competition Rule 20.5.:

A competitor with a control punch missing or unidentifiable shall be disqualified unless it can be established with certainty that the punch missing or unidentifiable is not the competitor's fault. In this exceptional circumstance, other evidence may be used to prove that the competitor visited the control, such as evidence from control officials or cameras or read-out from the control unit. In all other circumstances, such evidence is not acceptable and the competitor must be disqualified.

In the case of traditional (non-contactless) SPORTident, this rule means that:

- If a competitor punches too fast and fails to receive the feedback signals, the card will not contain the punch and the competitor must be disqualified, even though the control unit may have recorded the competitor's card number as an error punch.
- It is permitted for the organiser to read the backup from any control. A competitor can require the organiser to read the backup from a control, subject to a payment of 20 EUR (or 7,000 HUF). If the control is found to contain a complete (non-error) punch; the competitor shall be recorded as having punched that control correctly and the fee will be returned; otherwise the fee shall be retained by the organiser.

Please note that a contactless punch performed by an SI Air+ (SIAC) card is NOT recorded in the memory of the control station, thus there is no point in reading it out in case of a missing punch.

COMPLAINTS AND PROTESTS

In accordance with IOF Competition Rules 27 and 28, complaints and protests must be made in writing (in English), using the appropriate complaint / protest forms, which are available at the Problems Desk.

Complaints should be handed in at the Problems Desk in the arena within 30 minutes of finishing. If the complaint is of personal nature, e.g. if you feel that you have been disqualified unfairly, the complaint should be made at the Problem Desk immediately. The organiser will consider your complaint as quickly as possible and let you know the outcome. There is no fee for a complaint.

If you are not satisfied with the organiser's decision, then, within the next 15 minutes, you can make a protest. Protests should be made at the Event Office in the arena, using the same form as the original complaint. A Protest fee of 50 EUR (or 17,000 HUF) shall be paid to the IOF Senior Event Adviser in cash when making a Protest. The fee will be returned if the Protest is accepted by the jury, otherwise the fee shall be sent to the IOF. If a protest is signed by more than one competitor, each one has to pay the protest fee.

Protests will be handled by the IOF Senior Event Adviser, who will convene the jury. After due consideration, the jury will communicate its decision to the protestor. The protest fee will be returned if the protest is accepted.

FIRST AID DURING THE RACES

There will be First Aid facilities in all arenas on competition days. The first aid teams will consist of trained first aid providers from the Hungarian Ambulance as well as volunteer doctors and nurses.

A first aid station is available in the terrain at all three forest competitions and is marked by a red cross on the map. The station is manned by qualified first aid providers who can summon additional assistance as needed.

In the event of an accident, illness or injury in the terrain or in the arena, fellow competitors are requested to aid the injured individual and to help summon assistance if necessary.

First aid is not provided during the model events.

INFORMATION ABOUT POSSIBLE HAZARDS

Ticks. Tick-borne infections that occur in Hungary are as follows:

- Borreliosis / Lyme Disease: https://en.wikipedia.org/wiki/Lyme_disease
- Tick-borne encephalitis (TBE): https://en.wikipedia.org/wiki/Tick-borne_encephalitis

If you encounter any ticks on your body, remove them as soon as possible. If you are concerned about a tick bite or about possible infection, please consult a doctor.

Immunisation against TBE is not considered necessary for WMOC 2021.

Lightning may occur during thunderstorms. Try to stay off the hilltops and don't seek shelter under an isolated tree. Note also, that lightning mostly occurs in the afternoons.

In the event of hot weather, remember to increase your fluid intake before, during and after the race to optimise your performance and prevent heatstroke. It is recommended to bring a tent or an umbrella to provide some protection.

GENERAL DATA PROTECTION REGULATION (GDPR) STATEMENT - PERSONAL DATA STORAGE

Individuals entering the WMOC will do so by submitting personal data to IOF Eventor, an IOF-hosted platform. From here, the local organisers will collect the data that are necessary for that individual's participation in the championships including, but not restricted to, name, age, address, country, and e-mail address. During the event, newsfeeds, start times and results will be published on the internet and may contain individual runners' name, age class, and home country.

The local organisers will not share the participants' personal data with a third party, will store the data safely on the appropriate media, and will delete files containing personal data as soon as feasible after WMOC is finished.

By submitting an entry for and participating in or attending WMOC and its related activities, the participant / attendant acknowledges the right of the organisers to store said data until the WMOC is finished. For information on data storage by the IOF, please refer to <https://orienteering.sport/iof/governance-and-organisation/data-protection-at-the-iof-gdpr/>

PHOTOGRAPHY AND FILMING

Professional photography and video production will be taking place at WMOC and these images may be used on future promotional materials for WMOC or other events organised by the IOF. By attending or participating in WMOC and related activities, the participants acknowledge that the event or part of it may be filmed by audio, visual, audio-visual or electronic means or photographed, including photographs of individuals or groups of participants. The participant agrees to permit the WMOC organisers, or any third party licensed by the IOF or WMOC, to use and distribute such footage and photographs, which may feature images of you, in all or any media (including social media) whether now known or hereafter to be invented throughout the world in perpetuity for the purposes of advertising, publicity, reporting and otherwise in relation to the exploitation of such recordings and photographs. Please inform the photographer if you do not wish to be included in any individual or group photographs.

DAY-BY-DAY INFORMATION

10. TECHNICAL MODEL EVENT, 6TH AUGUST

The technical model event is at the Event Centre in Velence.

Time: 14:00 - 19:00, Friday 6th August

The technical model event will show how the Start and Finish will be set up in all races. 4 controls with full competition equipment are also placed in the school park, so punching (also with SIAC) can also be tested. A small map is available on site for this technical model event. Note that the terrain is not relevant for either of the competitions.

If you have turned on your SIAC in the start (by punching the “check” box), don’t forget to switch it off in the finish. Otherwise you risk that your SIAC battery may get drained for the competitions!

GETTING THERE AND PARKING

GPS: 47.24258, 18.64774

Parking is possible at the Event Centre.

Service: WC, drinking water and a snack shop selling various refreshments, coffee, cakes and ice cream is available at the Event Centre.

11. SPRINT MODEL EVENT, 6TH AUGUST

Venue: the venue for the Sprint Model Event is conveniently placed between the Sprint Qualification and Sprint Final areas in Székesfehérvár.

Time: 10:00 – 19:00, Friday 6th August

Map: Székesfehérvár Strand, 1:4,000 and 1:3,000. Contour interval: 2.5 metres.

GETTING THERE AND PARKING

There will be no signs leading to the parking area or the arena. Parking can be chosen freely outside the embargoed areas, but please note that there is a parking fee in most parts of Székesfehérvár on Friday. The parking area used for the Sprint Final race is free of charge, but please check if you really park at a “free” place!

GPS for the main parking area: 47.18926, 18.40594

GPS for the finish sign on the map: 47.19204, 18.40420

No transport is provided by the organisers to the Sprint model event area, since it's accessible by public transport. Please ask the Event Office for details.

Tour group bus information: Tour group buses can drop off people at the main parking area (47.18926, 18.40594) and also can park here.

TERRAIN

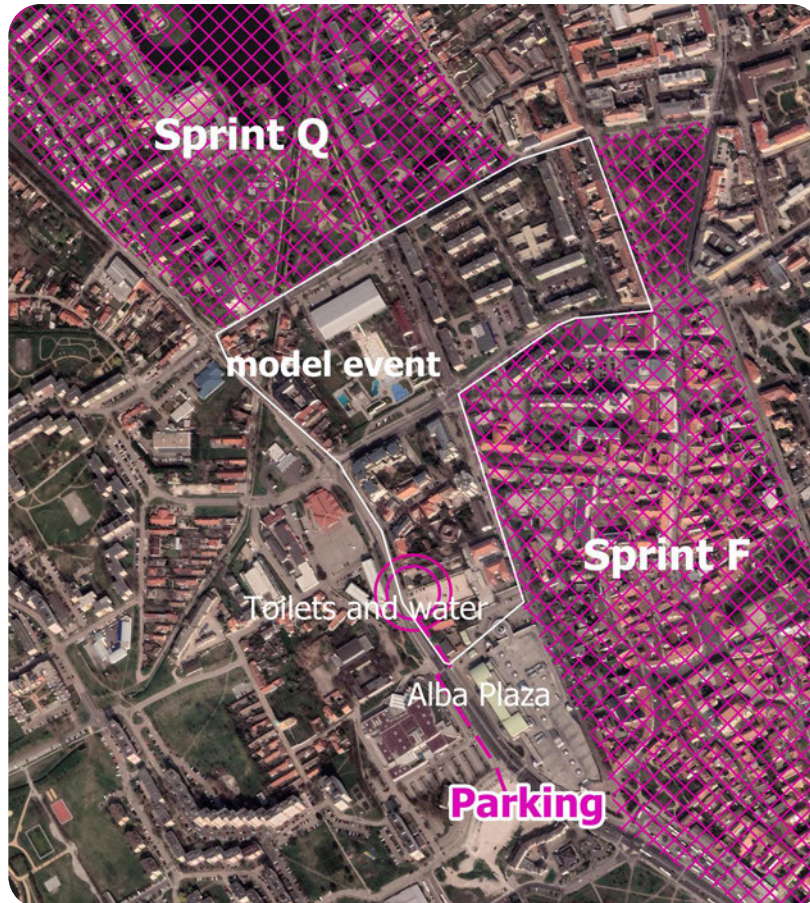
The Sprint model area is situated between the Sprint Qualification and Sprint Final terrains. A big road going from east to west separates the southern part - which is relevant for the Sprint Final from the northern part - relevant for the Sprint Qualification. The northern part consists of residential areas with a couple of schools and a park, while the southern part has office buildings with courtyards.

Special care has been taken to present various different mapping and course features. Note that if there is any doubt, areas which are mapped as private (with olive green) are marked with a red-and-white tape in the terrain to show that they must not be crossed. This is also the case in both Sprint races.

COURSE DETAILS

16 controls are placed in the area. They can be visited in any order and without time control. The controls don't have SPORTident equipment. The model event represents both Sprint race areas, map and control placements.

OVERVIEW MAP



COMPETITION AREA - OUT OF BOUNDS

Please respect the out of bounds areas marked on the model event map. Entering the competition area for the Sprint races with a map (other than that of the Sprint model event) may lead to disqualification from the Sprint races.

Service: There are no shops at the model finish area, however there are numerous shops close by. The nearby Alba Plaza shopping mall (to the south of the model event finish area) also has several food shops. Water and toilets are available at the model event finish area, but first aid facilities are not available.

12. SPRINT QUALIFICATION RACE, 7TH AUGUST

Venue: Székesfehérvár, Bregyóközi Szabadidő központ. GPS: 47.20418,18.39811.
Entrance is only possible from the northwest!

GETTING THERE AND PARKING

Go to the part of the big ring road around Székesfehérvár. which is north-west of the city where a Lidl supermarket is situated. Signs start at 47.20473, 18.38685, which is one of the big roundabouts. Follow the signs exiting the roundabout to the southeast - the parking area is 800 metres away.

Please note that there can be major traffic jams on the M7 motorway, and Saturday mornings can be especially problematic with people travelling to Lake Balaton!

GPS parking entrance: 47.20352, 18.39349

The distance from the parking area to the arena is 150-300 metres.

No transport is provided by the organisers to the Sprint Qualification finish area, as it's accessible by public transport. Please ask the Event Office for details.

Please note, that the embargoed area needs to be vacated by 8:00! For those staying in Best Western Plus Lakeside Hotel, we insist walking out towards the west to Szeder Street and approach the arena on the western edge of the embargoed area (1.5 km on foot, no markings are provided). A campsite is also located inside the embargoed area.

TOUR GROUP BUS INFORMATION

Tour group buses should follow signs to the parking area. They can unload passengers at the entrance to the parking area (350 metres from the arena).

OVERVIEW MAP - SPRINT QUALIFICATION PARKING



OVERVIEW MAP - SPRINT QUALIFICATION ARENA



START

Distance from Arena to start 1: 720 m. Follow black-and-yellow ribbons.

Distance from Arena to start 2: 300 m. Follow blue-and-white ribbons.

There are no toilets and refreshments at the start as the arena is close enough.

The first start is at 10:00 and the last start at around 12:30. Public event first start is at 13:00.

TERRAIN - SZÉKESFEHÉRVÁR NORTH

The area consists of a huge urban park with numerous flowerbeds and a big lake, surrounded by blocks of flats, schools, etc. The part close to the Finish has various sports fields and some tricky out-of-bounds areas (private properties, flower beds, etc.) and fences. Visibility and runnability are both excellent.

Some roads have light traffic which will be regulated during the competition. The terrain is almost completely flat. Besides the lake, there are a few uncrossable canals in the terrain. **All water features in the Sprint Qualification terrain are uncrossable!** These shall only be crossed on the marked bridges. Utility pipelines are also crossing the canal, these are not marked on the map and are forbidden to use as crossing points. Pipelines which may be mistaken for bridges are closed with red-and-white tape.

Out-of-bounds areas which are not obvious on the ground, are marked by red-and-white tape, which is also demonstrated at the Sprint Model Event.

You will encounter some artificial impassable fences (ISSprOM 518) in the park next to the arena. Race marshals will supervise the area - crossing the red-and white tapes will lead to disqualification.



SPECIAL FEATURES, SPRINT QUALIFICATION RACE



Different types of bridges



Uncrossable canal



Uncrossable fence. Some fences may only be 1,3 metres high, but are still uncrossable.



Tubes across the canals are not mapped and shall not be used for crossing!

Black cross (x) - playground objects, fitness park objects, football goalpost

Black circle (o) - high electric pole

CLUB TENTS

Club tents are welcome in the designated areas besides the arena. The seats of the grandstand of the athletics stadium can be used also. There is a shaded area at the top of the grandstand. In case of heavy rain, it will be possible to use the indoor running facility under the grandstand. Entrance is at the northern corner of the building.

COURSE DETAILS

All maps are size A4+ (height: 305 mm, width 210 mm), except for the M60-1 and M60-2 classes, which use A3+ size maps (height 420 mm, width 305 mm).

The length is given as the shortest possible running distance. The climbing in every course is less than 10 metres.

SPRINT QUALIFICATION			
Class	Start #	Length	Controls
M35-1	1	4260 m	25
M40-1	1	4060 m	26
M45-1	1	3800 m	25
M50-1	1	3270 m	24
M50-2	1	3200 m	23
M55-1	1	3190 m	18
M55-2	1	3220 m	19
M60-1	1	3200 m	20
M60-2	1	3200 m	19
M65-1	1	3000 m	14
M65-2	1	2910 m	15
M70-1	2	2270 m	14
M70-2	2	2300 m	13
M75-1	2	1770 m	13
M75-2	2	1820 m	12
M80-1	2	1700 m	10
M85-1	2	1370 m	11
M90-1	2	900 m	7
M95-1	2	900 m	7
W35-1	1	3690 m	25
W40-1	1	3000 m	14
W45-1	1	2950 m	15
W50-1	1	2920 m	16
W55-1	1	2420 m	16
W60-1	1	2400 m	17
W65-1	1	2370 m	15
W70-1	2	1810 m	11
W75-1	2	1760 m	10
W80-1	2	1370 m	11
W85-1	2	900 m	7
W90-1	2	900 m	7
W95-1	2	900 m	7

13. SPRINT FINAL RACE, 8TH AUGUST

Venue: Székesfehérvár, Palotai kapu tér, just in front of the Alba Plaza shopping mall.
GPS: 47.18970, 18.40798

GETTING THERE AND PARKING

Go to the part of the big ring road around Székesfehérvár. which is north-west of the city where a Lidl supermarket is situated. Signs start at 47.20473, 18.38684, which is one of the big roundabouts. Follow the signs exiting the roundabout to the southeast and follow this road all the way to the parking area on your right, 2.3 km from the roundabout.

Please note that there can be major traffic jams on the M7 motorway!

GPS parking entrance: 47.18980, 18.40587

Note that this is a public parking area, not guarded by the organisers and only minimal guidance will be given during parking! If the public parking area fills up, there is plenty of space available further west in 50-300 metres from the entrance to the parking area.

The distance from the parking area to the arena is 100-300 metres and is not marked! Walk east towards the big Alba Plaza building. The main road can be crossed through an overpass with some stairs. A flag on top of the overpass will also help the approaching competitors.

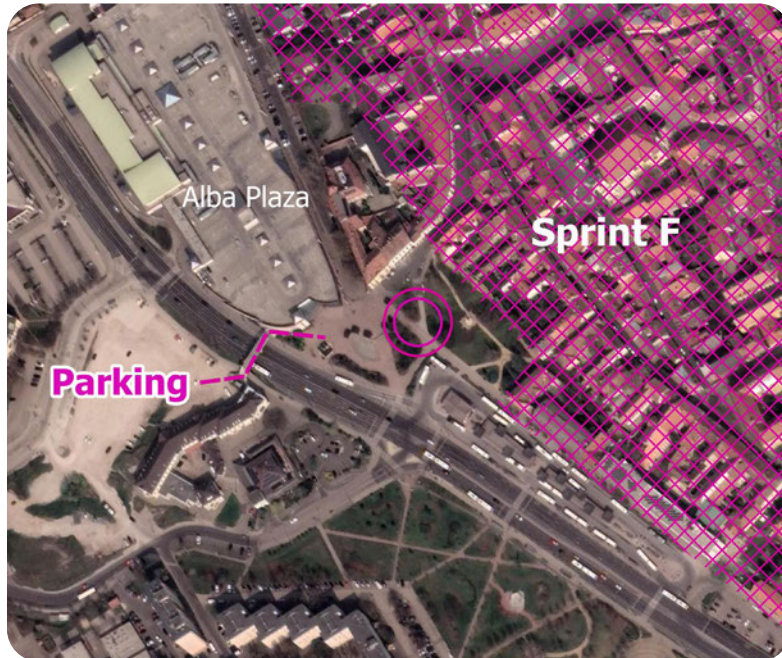
No transport is provided by the organisers to the Sprint Final arena, as it's accessible by public transport (in fact it's right beside the bus station). Please ask the Event Office for details.

Please note, that the embargoed area needs to be vacated by 8:00! Notably, Hotel Magyar Király is inside the Sprint Final embargoed area. Please find the shortest way out of the embargoed area and then go around to the arena.

TOUR GROUP BUS INFORMATION

Tour group buses may unload their passengers at the local bus station, right besides the arena. Tour group buses can park at the regular parking area.

OVERVIEW MAP - SPRINT FINAL PARKING



OVERVIEW MAP - SPRINT FINAL ARENA



START

Distance from Arena to start 1: 1600 m. Follow black-and yellow ribbons.

Distance from Arena to start 2: 170 m. Follow blue-and-white ribbons. No warm-up map is available!

There are no toilets and refreshments at start 2, as the arena is close enough.

The first start is at 10:00 and the last start at around 12:30. Public event first start is at 13:00.

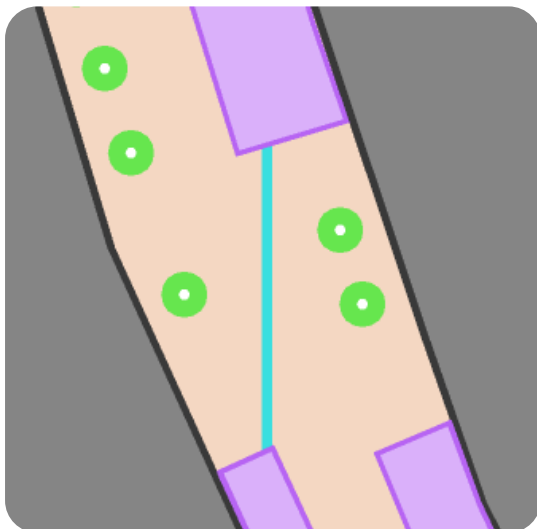
TERRAIN - SZÉKESFEHÉRVÁR DOWNTOWN

The downtown area of the old Hungarian coronation city has 5% park and 95% urban terrain. It is a typical old town area with both narrow and wider passages, little parks and some residential areas. Some of the courtyards will be open only for the WMOC Sprint Final. Building patterns are irregular and the area has very little elevation difference. Roads inside the area are closed, but minor traffic and pedestrians are expected in the complex downtown area. Visibility and runnability are both excellent.

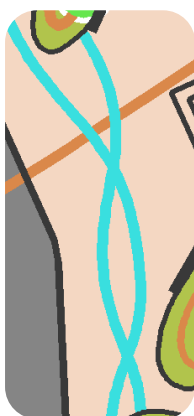
Impassable features are generally very obvious, but red-and-white tape is used to outline those out-of-bounds areas which are not clear on the ground. Race marshals will supervise the area - crossing the red-and white tapes will lead to disqualification.

SPECIAL FEATURES, SPRINT FINAL RACE

There is a spectator control 50 metres east of the last control, which is used by most A-final courses.



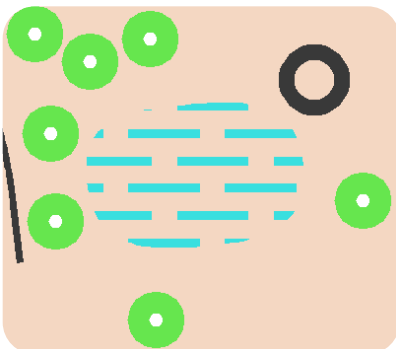
Restaurant terraces in the Sprint Final race are marked as temporary closed area (ISSprOM 714, area overprinted with 50% purple). It is forbidden to cross these, also please take special care when running around them, guests or waiters may come out anywhere.



Artificial creek (crossable)



Some construction work is being carried out in the city. The construction sites are marked on the map with the out-of-bounds area symbol (ISSprOM 709, purple hatches) and in most places also with a purple boundary line (where the boundary is clear).



Street fountains are marked with the indistinct marsh symbol (310)

Black circle (o) - high pole

Black cross (x) - various man-made objects: playground objects, football goalpost, etc.

CLUB TENTS

As space is very limited, club tents can NOT be pitched in the arena. A big marquee tent can be used to get in the shade. Also there is shade available under the trees.

Please note, that we are in the middle of a big city so don't leave your valuables unattended - use the luggage storage facility at the Arena Event Office!

COURSE DETAILS

All maps are size A4+ (height: 305 mm, width 210 mm).

The course length is given as the shortest possible running distance.

SPRINT FINAL				
Class	Start #	Length	Climb	Controls
M35-A	1	3890 m	40 m	22
M35-B	1	3170 m	30 m	19
M40-A	1	3720 m	40 m	21
M40-B	1	3010 m	25 m	19
M45-A	1	3520 m	35 m	21
M45-B	1	2970 m	25 m	19
M50-A	1	3250 m	35 m	20
M50-B	1	2790 m	25 m	20
M55-A	1	2970 m	30 m	19
M55-B	1	2590 m	20 m	19
M60-A	1	2840 m	25 m	18
M60-B	1	2440 m	15 m	16
M65-A	1	2750 m	25 m	19
M65-B	1	2070 m	15 m	14
M70-A	2	2330 m	15 m	16
M70-B	2	1980 m	15 m	16
M75-A	2	2040 m	15 m	14
M75-B	2	1780 m	15 m	14
M80-A	2	1700 m	10 m	13
M80-B	2	1370 m	10 m	13
M85-A	2	1490 m	10 m	11
M90-A	2	1220 m	10 m	10
M95-A	2	1090 m	5 m	9
W35-A	1	3250 m	35 m	20
W35-B	1	2790 m	25 m	20
W40-A	1	3100 m	30 m	22
W40-B	1	2610 m	20 m	19
W45-A	1	2970 m	30 m	19

W45-B	1	2590 m	20 m	19
W50-A	1	2840 m	25 m	18
W50-B	1	2440 m	15 m	16
W55-A	1	2750 m	25 m	19
W55-B	1	2070 m	15 m	14
W60-A	1	2520 m	20 m	15
W60-B	1	2000 m	15 m	12
W65-A	1	2370 m	20 m	15
W65-B	1	1860 m	15 m	13
W70-A	2	2030 m	15 m	16
W70-B	2	1600 m	10 m	13
W75-A	2	1700 m	10 m	13
W75-B	2	1370 m	10 m	13
W80-A	2	1490 m	10 m	11
W85-A	2	1090 m	5 m	9
W90-A	2	1090 m	5 m	9
W95-A	2	1090 m	5 m	9

14. FOREST QUALIFICATION AND MIDDLE FINAL MODEL EVENT, 9TH AUGUST

Venue: the venue for the Forest Qualification and Middle Final Model Event is the northeastern part of the Middle Final terrain in Pákozd. Don't forget to visit the wobbling stone at the top of the terrain, which can also be found in the WMOC 2021 event logo!

Time: 09:00 - 19:00, Monday 9th August

Map: Pákozd, Ingó-kő, 1:10,000 and 1:7,500. Contour interval: 5 metres.

GETTING THERE AND PARKING

Signs leading to the parking area will start in the middle of Pákozd at 47.21722, 18.54303 on road no. 8116. The parking area is 1 km north of this point. There will be officials regulating parking, so that buses can easily turn around.

GPS for the parking area: 47.222423, 18.535941

TOUR GROUP BUS INFORMATION

Tour group buses can drop off people at the parking area.

TERRAIN

The model area borders the Middle Final competition area to the west. The western part of the terrain is highly relevant for the Middle Final race, while the eastern part is relevant for the Forest Qualification race. The ground is hard and is dominated by open lands with some bushes. A small portion of forest is available which is relevant for both the Forest Qualification and the Middle Final races. Runnability is very good in the open areas and between good and significantly reduced in the forest. There is very little undergrowth and the terrain is moderately hilly. There is a relatively dense network of tracks and roads in the area. There are very few water features in the area and the ground is dry. There are some rock formations mostly in the open areas, but this is not really relevant for the Middle Final race, as this competition area doesn't have a lot of stones.

COURSE DETAILS

20 controls are placed in the area. They can be visited in any order and without time control. The controls don't have SPORTident equipment. The model event represents the race areas, map and control placements for both the Forest Qualification and the Middle Final races.

Please note that the closest control to the model event finish area is 1200 metres away with 50 m climbing!

OVERVIEW MAP



COMPETITION AREA - OUT OF BOUNDS

Please respect the out of bounds areas marked on the model event map. Entering the competition area for the Middle Final race may lead to disqualification from the forest races.

Service: There are no shops at the model finish area. First aid facilities are not available either. You can find water and toilets in the parking area.

15. FOREST QUALIFICATION RACE, 10TH AUGUST

Venue: Csákvár, close to the airstrip. GPS: 47.36866, 18.42428

GETTING THERE AND PARKING

From Székesfehérvár, follow road no. 8123 towards Zámoly and then further north. Signs will start at the big roundabout north of Zámoly (GPS: 47.34545, 18.40201). At the roundabout, turn east onto road no. 8126 and look for the exit towards the north at 47.36462, 18.43580.

From Budapest / Csákvár, signs will start at the northeast end of Csákvár on road 8126 at 47.39910, 18.47644. From here, follow road no. 8126. towards the parking exit towards the north at 47.36462, 18.43580.

The parking area is 400-600 m from road no. 8126 on a wide road, and the arena is a further 500-800 m from the parking area, with 30-40 m climb.

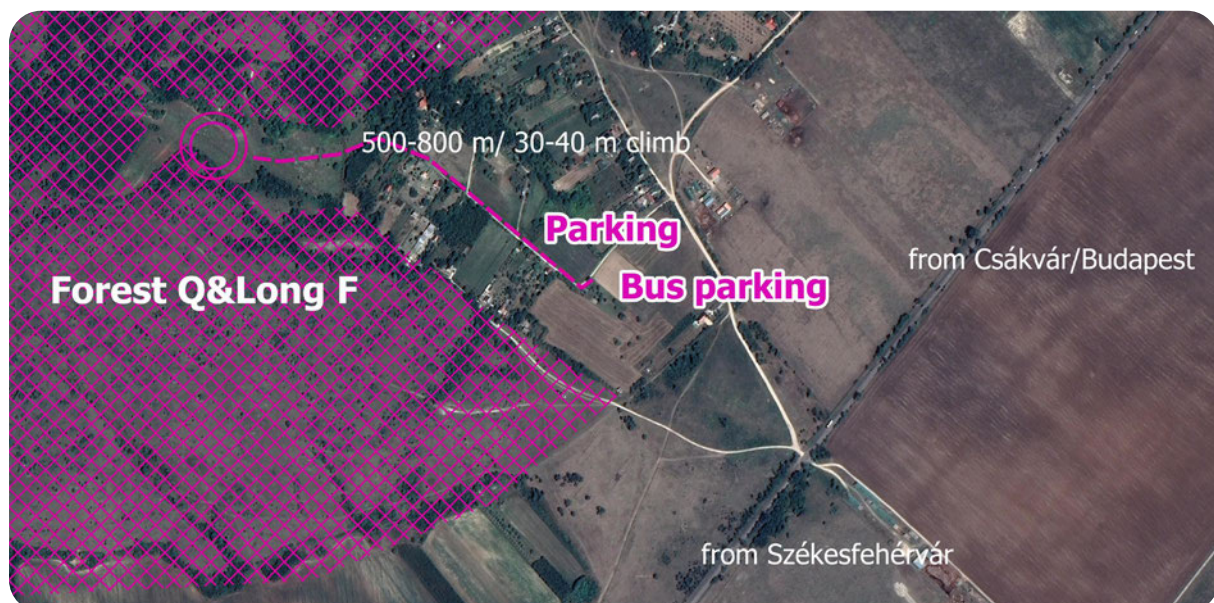
TOUR GROUP BUS INFORMATION

Tour group buses can unload their passengers in the bus parking area at 47.36839, 18.43301. The arena is a 750 m walk with 35 m climb from here.

SHUTTLE BETWEEN THE PARKING AREA AND THE ARENA

A jeep will operate for 85+ year old competitors continuously between the bus parking area and the arena. Look for the WMOC 2021 transport sign. This same shuttle can be used also to go to the start.

OVERVIEW MAP - FOREST QUALIFICATION PARKING



OVERVIEW MAP - FOREST QUALIFICATION ARENA

Arena Forest Qualification



START

Distance from Arena to start (all classes): 850 m / 10 m climb. Follow blue-and-white ribbons. The way to the start goes close by the parking areas. The start is 250 m from the edge of the parking area.

Entrance to Start 2 is on the right hand side, while entrance to Start 1 is on the left hand side. The Start flag is the same for both starts.

There are toilets and refreshments available at the Start.

The first start is at 10:00 and the last start at around 12:30. Public event first start is at 13:00.

TERRAIN - CSÁKVÁR

The terrain is located in the south-eastern foot of the Vértes mountain range between 160-260 m above sea level. The range is built up of dolomite rock, it is full of erosion features, like gullies and steep valleys. One of the consequences of the structure of the bedrock is the firm ground, so there are no marshes. The vegetation of the terrain is diverse. From the large, open and semi-open plateaus with irregular thickets and bushes to the steep-walled, forested valleys. The bushes on the plateaus are usually smoke bushes and the ground there is usually rocky, however runnability and the visibility are excellent. The dominant tree in the forested areas is oak. There are multiple visible marks of human activity, such as hunting objects and remnants of old military objects (buildings, pits and trenches). Track density is medium.

There are large boulders on the sides of the valleys, up to 5 meters high. Abandoned mines in the western part of the terrain are bounded by high cliffs. The top of these will be taped by red-and-white tapes to avoid accidents. Steeper slopes with smaller cliffs and rocks pose a slipping hazard even in dry weather. Be careful in these areas.

SPECIAL FEATURES, FOREST QUALIFICATION RACE



Foxhole (ISOM 113 - brown dots)



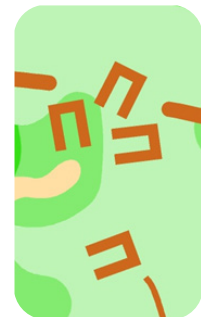
Pillar (ISOM 530 - black circle)



Mobile hunting towers may be found in the terrain, but as they are mobile, we decided not to draw them on the map.



Tank pit (special symbol)



Black cross (x) -various hunting objects

Competitors may encounter white ribbons in the terrain. This is used to assist novice competitors in the WMOC Tour competition between some controls. It's not marked on the WMOC competitors' maps though.

CLUB TENTS

Club tents are welcome in designated areas in the arena. Please note that there is not much shade available, so bringing a tent may be a viable option.

COURSE DETAILS

Map size:

A - 430 mm width, 270 mm height, 1:10 000 scale

B - 305 mm width, 270 mm height, 1:10 000 scale

C - 305 mm width, 215 mm height, 1:10 000 scale

D - 410 mm width, 290 mm height, 1:7 500 scale

E - 270 mm width, 305 mm height, 1:7 500 scale

F - 305 mm width, 215 mm height, 1:7 500 scale

FOREST QUALIFICATION						
Class	Start #	Length	Climb	Controls	Water controls	Map size
M35-1	1	8630 m	300 m	20	3	A
M40-1	1	8360 m	260 m	16	3	A
M45-1	1	7520 m	245 m	15	3	A
M50-1	1	7290 m	240 m	16	3	A
M50-2	1	7280 m	240 m	16	3	A
M55-1	1	6700 m	210 m	13	3	A
M55-2	1	6710 m	230 m	13	3	A
M60-1	1	5590 m	190 m	14	2	D
M60-2	1	5630 m	195 m	14	2	D
M65-1	1	5310 m	180 m	13	3	D
M65-2	1	5380 m	180 m	13	3	D
M70-1	2	4950 m	185 m	13	3	D
M70-2	2	4890 m	185 m	12	2	D
M75-1	2	4290 m	165 m	11	2	E
M75-2	2	4170 m	160 m	12	2	E
M80-1	2	3350 m	110 m	12	1	F
M85-1	2	2640 m	90 m	9	1	F
M90-1	2	1730 m	55 m	6	1	F
M95-1	2	1350 m	35 m	7	1	F
W35-1	1	6020 m	220 m	14	2	A
W40-1	1	5690 m	215 m	13	2	B
W45-1	1	4700 m	170 m	12	2	B
W50-1	1	4310 m	150 m	10	2	B
W55-1	1	4100 m	150 m	13	3	B
W60-1	1	3840 m	125 m	14	1	E

W65-1	1	3730 m	125 m	11	2	E
W70-1	2	3190 m	85 m	11	1	F
W75-1	2	2640 m	70 m	9	1	F
W80-1	2	1810 m	50 m	8	1	F
W85-1	2	1350 m	35 m	7	1	F
W90-1	2	870 m	25 m	5	0	F
W95-1	2	870 m	25 m	5	0	F

ASSISTANCE FOR CHILDREN PARTICIPATING IN THE PUBLIC RACE

WMOC participants are allowed to follow their children around their course in the WMOC Tour.

16. MIDDLE FINAL RACE, 11TH AUGUST

Venue: Székesfehérvár-Csala, Kégl-kastély. GPS: 47.22384, 18.49783

GETTING THERE AND PARKING

From Budapest, on the M7 motorway, take exit 57 towards Székesfehérvár kelet. Continue towards Székesfehérvár on road no. 7. Signs will start at the edge of the city at 47.19831, 18.48301. Take the first road to the right from here and continue north at the edge of the city until you reach road no. 811. Then turn right onto road no. 811 and continue for 2 km to the centre of Csala, where you take a minor road to the right (GPS: 47.22925, 18.48081).

From Székesfehérvár, head out towards northeast on road no. 811. towards Bicske / Lovasberény. Signs will start at the northeast edge of Székesfehérvár, at 47.21941, 18.45943. Continue for a further 2 km to the centre of Csala, where you take a minor road to the right (GPS: 47.22925, 18.48081).

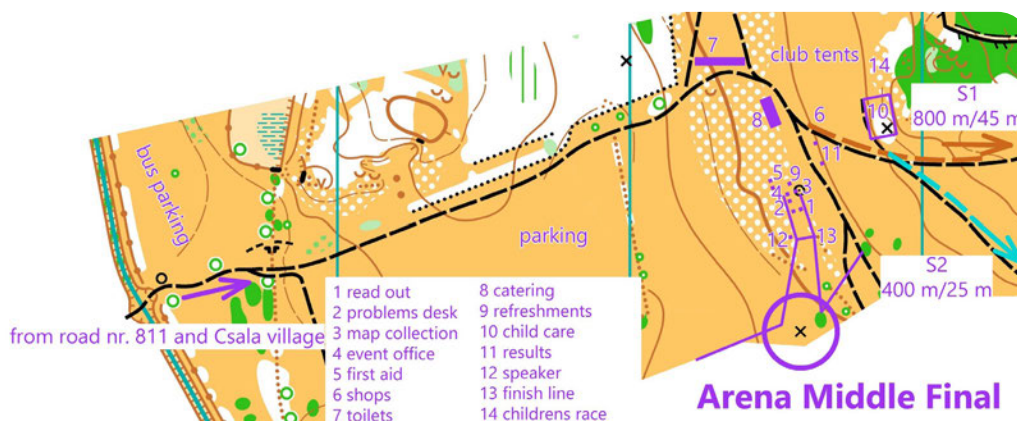
From Bicske / Lovasberény on road no. 811, signs will start at the western edge of Lovasberény (GPS: 47.31172, 18.54415). Follow road no. 811 for a further 11 km to the centre of Csala where you take a minor road to the left (GPS: 47.22925, 18.48081).

The parking area is 1.4 km from the centre of Csala on paved, then on a dirt road. A pontoon bridge also needs to be crossed close to the parking area. The arena is a further 150-600 m away from the parking area, with minimal climb.

TOUR GROUP BUS INFORMATION

Tour group buses (which do multiple turns) can unload their passengers at the end of the paved road in Csala (GPS: 47.22501, 18.48383), from which the arena is a 1300 m walk. Tour group buses can park at the regular bus parking area, 500 m from the arena.

OVERVIEW MAP - MIDDLE FINAL ARENA AND PARKING



Note that it may get very hot in the arena in the open areas!

START

Distance from Arena to start 1: 800 m / 45 m climb. Follow black-and-yellow ribbons.

Distance from Arena to start 2: 400 m / 25 m climb. Follow blue-and-white ribbons.

There are no toilets at the starts as the arena is close enough. Water will be available.

The first start is at 10:00 and the last start at around 12:30. Public event first start is at 13:00.

TERRAIN - SZÉKESFEHÉRVÁR, KÉGL-KASTÉLY

This is a moderately hilly area between 150-240 m asl with many erosion features (spurs and small re-entrants) and man-made pits. Most of the area is on a slope, where getting the elevation right will be essential. It consists mostly of open areas with irregular thickets and bushes with some green forest in the valleys between the open areas. There are some gullies and steep earth banks on the side of the valleys. Thickets in the open areas are mostly thorn and passing through dark green is virtually impossible. Some courses will also visit forested areas (oak) with limited runnability and visibility, but all types of vegetation are passable there. There is some ground vegetation in the forested areas, but only a little in the open areas. There are only a few granite boulders and cliffs in the terrain and open areas have a hard granite surface. Firm ground, no marshes. Runnability is excellent in most places but limited in the green / forested areas. Varying visibility, even in the open areas. Low track density.

Those on the longer courses may run close to private areas (symbol no. 520, olive green) which are bordered by hedges and not fences. Their edge is clearly visible in the terrain. These are out-of-bounds for the runners - entering them may lead to disqualification. Anyway, no advantage is gained by running through these areas.

There are plenty of rabbit burrows (holes) in the terrain, which are not marked. Watch out to prevent a sprained ankle!

SPECIAL FEATURES, MIDDLE FINAL RACE

Special man-made object - black cross (x): various hunting objects. An example is above.



CLUB TENTS

Club tents may be set up in the designated areas in the arena. Please note that there is virtually no shade available, so bringing a tent is the recommended option.

COURSE DETAILS

Map size:

A - 305 mm width, 215 mm height, 1:10 000 scale

B - 380 mm width, 215 mm height, 1:7 500 scale

C - 350 mm width, 215 mm height, 1:7 500 scale

D - 305 mm width, 215 mm height, 1:7 500 scale

E - 305 mm width, 215 mm height, 1:7 500 scale

MIDDLE FINAL						
Class	Start #	Length	Climb	Controls	Water controls	Map size
M35-A	1	6380 m	210 m	20	3	A
M35-B	1	4970 m	135 m	19	2	A
M40-A	1	6150 m	200 m	19	3	A
M40-B	1	4780 m	135 m	16	3	A
M45-A	1	5070 m	180 m	15	1	A
M45-B	1	4170 m	80 m	12	2	A
M50-A	1	5200 m	180 m	18	2	A
M50-B	1	4050 m	125 m	14	1	A
M55-A	1	4620 m	105 m	13	2	A
M55-B	1	3630 m	80 m	14	1	A
M60-A	2	4250 m	115 m	15	2	B
M60-B	2	3310 m	75 m	13	2	C
M65-A	2	4320 m	135 m	15	2	B
M65-B	2	3360 m	70 m	14	1	C
M70-A	2	3720 m	75 m	13	2	C
M70-B	2	3050 m	60 m	10	3	C
M75-A	2	3170 m	65 m	12	2	C
M75-B	2	2620 m	55 m	10	1	D
M80-A	2	2690 m	65 m	10	3	C
M80-B	2	2300 m	35 m	8	2	D
M85-A	2	2140 m	30 m	9	1	D
M90-A	2	1390 m	15 m	7	0	E
M95-A	2	980 m	10 m	6	0	E
W35-A	1	4990 m	130 m	18	2	A
W35-B	1	4170 m	80 m	12	2	A

W40-A	1	4850 m	145 m	18	2	A
W40-B	1	4050 m	125 m	14	1	A
W45-A	1	4020 m	105 m	14	1	A
W45-B	1	3230 m	75 m	12	2	A
W50-A	1	3740 m	105 m	14	2	A
W50-B	1	2920 m	65 m	11	2	A
W55-A	2	3600 m	85 m	13	2	A
W55-B	2	2840 m	65 m	10	2	A
W60-A	2	3320 m	70 m	12	2	C
W60-B	2	2770 m	65 m	11	1	C
W65-A	2	3380 m	75 m	13	2	C
W65-B	2	2620 m	55 m	10	1	D
W70-A	2	2840 m	60 m	12	1	C
W70-B	2	2360 m	40 m	10	2	D
W75-A	2	2300 m	35 m	9	1	D
W75-B	2	1760 m	30 m	9	0	E
W80-A	2	1800 m	20 m	8	0	E
W85-A	2	1360 m	20 m	6	0	E
W90-A	2	980 m	10 m	6	0	E
W95-A	2	980 m	10 m	6	0	E

ASSISTANCE FOR CHILDREN PARTICIPATING IN THE PUBLIC RACE

WMOC participants are allowed to follow their children around their course in the WMOC Tour.

17. LONG FINAL MODEL EVENT, 12TH AUGUST

Venue: the venue for the Long Final Model Event is the western part of the Forest Qualification terrain (only visited by the longest courses) and is on the southwest border of the Long Final terrain.

Time: 09:00 - 19:00, Thursday 12th August

Map: Gánt, Gém-hegy model, 1:10,000 and 1:7,500. Contour interval: 5 metres.

MAP DISTRIBUTION

As the Long Final model event will take place in the same area used by the Forest Qualification 2 days before, model event maps will only be available after the Forest Qualification race is over, as follows:

- in the Velece Event Office on 10th and 11th August
- in the Pákozd Arena Event Office during the Middle Final race on 11th August
- in the Long Final model event parking area on 12th August

Please only take as many model event maps as you will use on 12th August!

GETTING THERE AND PARKING

From Székesfehérvár, follow road no. 8123 towards Zámoly and then further north. Signs will start at the big roundabout north of Zámoly (GPS: 47.34545, 18.40201). At the roundabout, continue north on road no. 8123 until you reach Gánt village.

From Budapest / Csákvár, signs will start at the northeast end of Csákvár on road 8126 at 47.39910, 18.47644. From here, follow road no. 8126. towards the big roundabout north of Zámoly (GPS: 47.34545, 18.40201). At the roundabout, continue north on road no. 8123 until you reach Gánt village.

Parking is at the side of the minor road. GPS for the parking area: 47.38375, 18.38341

The start / finish area for the model event is 150 metres away from the parking area.

TOUR GROUP BUS INFORMATION

Tour group buses can park at the same place as others.

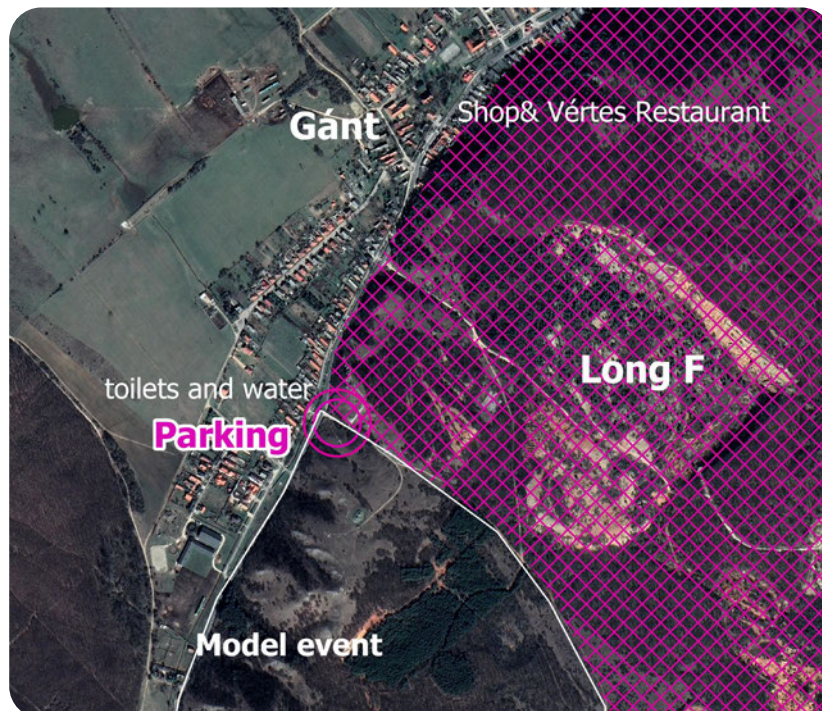
TERRAIN

The Long Final model area is part of the Forest Qualification area and borders the Long Final competition area to the southwest. The terrain is highly relevant for the Long Final race. The ground is hard and is dominated by oak with some open areas and bushes. The terrain is moderately to very hilly, with the steeper parts more relevant to the longer courses in the Long Final race. Runnability is good in the open areas, while somewhat reduced in the forest. There is some undergrowth. There is an average network of tracks and roads in the area. There are very few water features in the area. There are some rock formations mostly in the forested areas, but there will be more stones in the Long Final competition area.

COURSE DETAILS

16 controls are placed in the area. They can be visited in any order and without time control. The controls don't have SPORTident equipment. The model event represents the Long Final area, map and control placement.

OVERVIEW MAP



COMPETITION AREA - OUT OF BOUNDS

Please respect the out of bounds areas marked on the model event map. Entering the competition area for the Long Final race may lead to disqualification.

Service: There are no shops at the model finish area. A small shop and a restaurant is open 700 metres away in the centre of Gánt. First aid facilities are not available either. You can find water and toilets at the finish area.

18. LONG FINAL RACE, 13TH AUGUST

Venue: Csákvár, close to the airstrip. GPS: 47.36866, 18.42428. Same place as for the Forest Qualification race 3 days earlier.

GETTING THERE AND PARKING:

From Székesfehérvár, follow road no. 8123 towards Zámoly and then further north. Signs will start at the big roundabout north of Zámoly (GPS: 47.34545, 18.40201). At the roundabout, turn east onto road no. 8126 and look for the exit towards the north at 47.36462, 18.43580.

From Budapest / Csákvár, signs will start at the northeast end of Csákvár on road 8126 at 47.39910, 18.47644. From here, follow road no. 8126. towards the parking exit towards the north at 47.36462, 18.43580.

The parking area is 400-600 m from road no. 8126 on a wide road, and the arena is a further 500-800 m from the parking area, with 30-40 m climb.

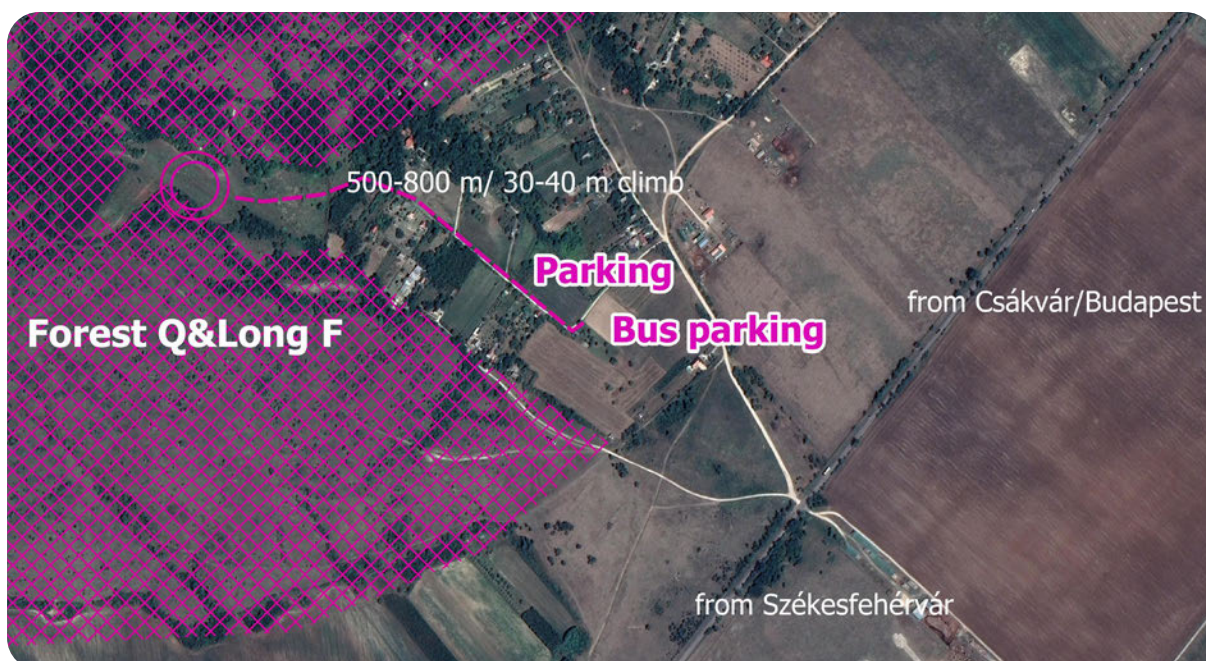
TOUR GROUP BUS INFORMATION

Tour group buses can unload their passengers in the bus parking area at 47.36839, 18.43301. The arena is a 750 m walk with 35 m climb from here.

SHUTTLE BETWEEN THE PARKING AREA AND THE ARENA

A jeep will operate between the bus parking area and the arena, for 85+ year old competitors, continuously. Look for the WMOC 2021 transport sign.

OVERVIEW MAP - LONG FINAL PARKING



OVERVIEW MAP - LONG FINAL ARENA



START

Distance from Arena to start 1: 2100 m / 40 m climb. Follow black-and-yellow ribbons.

Distance from Arena to start 2: 600 m / 20 m climb. Follow blue-and-white ribbons. Continuous shuttle service will be available for 85+ competitors. The shuttle will start continuously from the last control.

There are toilets and water available at start 1, while only water is available at start 2.

The first start is at 9:30 and the last start at around 12:00. Public event first start is at 13:00.

TERRAIN - CSÁKVÁR

The competition area is located on the southern part of the Vértes hills, the bedrock of which is dolomite formed from former marine sediment. This can typically be found on the side of the valleys and appears in the form of cliffs (1-3 metres high) and smaller blocks of stone on the surface. Although the cliffs are relatively small, in combination with steep slopes they pose a slipping hazard even in dry weather. Be careful in these areas.

There are no large stone fields which slow down the running.

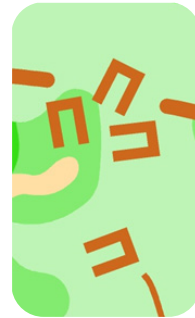
The area at 185-316 metres above sea level has wide ridges with some steep slopes and is cut by valleys, the sides of which - in some places very densely - are laced by smaller side valleys. Pits and small artificial depressions are common, usually located in groups.

Abandoned mines in the southwestern part of the terrain are bounded by steep cliffs. The top of these will be taped by red-and-white tapes to avoid accidents.

The vegetation consists predominantly of deciduous trees and shrubs. The density of the forest varies, but in general the runnability is good. There is often no vegetation on the ridges and in the southern hillsides, where runnability is excellent. Strong undergrowth is rarely found except in smaller patches. A medium-density road network is used for hunting and hiking. The area is extremely dry with no watercourses.

Hunting objects (hunting towers, feeding places) occur in large numbers.

SPECIAL FEATURES, LONG FINAL RACE



Tank pit (special symbol)



Foxhole
(ISOM 113 - brown dots)



Various hunting objects - mapped with a black cross (x)



Competitors may encounter white ribbons in the terrain. This is used to assist novice competitors in the WMOC Tour competition between some controls. It's not marked on the WMOC competitors' maps though.

CLUB TENTS

Club tents are welcome in designated areas in the arena. Please note that there is not much shade available, so bringing a tent may be a viable option.

COURSE DETAILS

Map size:

A - 395 mm width, 330 mm height, 1:10 000 scale

B - 430 mm width, 305 mm height, 1:10 000 scale

C - 295 mm width, 305 mm height, 1:10 000 scale

D - 305 mm width, 415 mm height, 1:7 500 scale

E - 335 mm width, 290 mm height, 1:7 500 scale

F - 345 mm width, 215 mm height, 1:7 500 scale

G - 305 mm width, 215 mm height, 1:7 500 scale

LONG FINAL						
Class	Start #	Length	Climb	Controls	Water controls	Map size
M35-A	1	11600 m	515m	16	3	A
M35-B	1	9430 m	380m	14	2	A
M40-A	1	10100 m	465m	17	3	A
M40-B	1	8540 m	360m	11	3	A
M45-A	1	9530 m	380m	16	2	A
M45-B	1	7270 m	250m	10	2	B
M50-A	1	8390 m	335m	14	2	B
M50-B	1	7150 m	290m	13	3	C
M55-A	1	7510 m	280m	11	2	B
M55-B	1	5930 m	205m	12	2	C
M60-A	1	6600 m	225 m	13	2	D
M60-B	1	5760 m	200 m	12	2	D
M65-A	1	6520 m	200 m	10	2	D
M65-B	1	4780 m	140 m	10	2	D
M70-A	2	5760 m	200 m	12	2	D
M70-B	2	4770 m	150 m	8	2	E
M75-A	2	4930 m	170 m	11	2	E
M75-B	2	3760 m	115 m	7	2	F
M80-A	2	3680 m	110 m	9	2	E
M80-B	2	3260 m	90 m	9	2	F
M85-A	2	2860 m	75 m	10	2	G

M90-A	2	1790 m	40 m	8	1	G
M95-A	2	1540 m	40 m	8	1	G
W35-A	1	7190 m	235 m	14	2	C
W35-B	1	6000 m	200 m	12	2	C
W40-A	1	6470 m	230 m	15	3	C
W40-B	1	4770 m	195 m	12	1	C
W45-A	1	5790 m	195 m	12	1	C
W45-B	1	4400 m	160 m	12	2	C
W50-A	1	5340 m	170 m	12	2	C
W50-B	1	4120 m	155 m	8	2	C
W55-A	1	5100 m	200 m	11	2	C
W55-B	1	3780 m	120 m	9	2	C
W60-A	2	4700 m	120 m	12	2	F
W60-B	2	3740 m	110 m	7	2	F
W65-A	2	4400 m	115 m	9	2	F
W65-B	2	3450 m	100 m	7	2	F
W70-A	2	3920 m	95 m	10	2	F
W70-B	2	2920 m	80 m	10	2	F
W75-A	2	2980 m	85 m	9	2	F
W75-B	2	2420 m	75 m	9	1	G
W80-A	2	2230 m	55 m	9	1	G
W85-A	2	1530 m	35 m	8	1	G
W90-A	2	970 m	30 m	5	0	G
W95-A	2	970 m	30 m	5	0	G

Note that you may find some refreshment points on controls that are not part of your course. These are not be visible on your map (and are not included in the table above)!

19. PUBLIC EVENT – WMOC TOUR

A five-day public orienteering event is organised during WMOC 2021. The WMOC Tour uses the same Start and Finish areas as the WMOC 2021 – the exceptions are day 3 and 5, where the shortest (children’s) courses use slightly different Finish areas.

The first starts for the WMOC Tour are after the last start of the WMOC 2021, so the programme enables participants to witness all the action from WMOC.

Programme:










- Day 1: Saturday, 7th August, 13:00 – Sprint – Székesfehérvár North
- Day 2: Sunday, 8th August, 13:00 – Sprint – Székesfehérvár Downtown
- Day 3: Tuesday, 10th August, 13:00 – Long Distance – Csákvár
- Day 4: Wednesday, 11th August, 13:00 – Middle Distance – Székesfehérvár, Kégl-kastély
- Day 5: Friday, 13th August, 13:00 – Long Distance – Csákvár

Bulletin 2 for the WMOC Tour will be published on 1st August 2021.

More information at <https://wmoc2021.hu/en/public-event/>

20. SUMMARY OF ENTRIES

Summary of entries received by 12th July 2021:

	Flag	Women	Men	Total
Austria		14	47	61
Belarus		2	1	3
Belgium		2	8	10
Brazil		0	1	1
Bulgaria		0	6	6
Canada		1	1	2
Croatia		2	1	3
Czech Republic		39	74	113
Denmark		16	27	43
Estonia		35	27	62
Finland		47	140	187
France		0	3	3
Germany		18	23	41
Great Britain		4	11	15
Hungary		129	221	350
Ireland		1	0	1
Israel		2	4	6
Italy		6	7	13
Kazakhstan		1	0	1
Korea, Republic of		0	1	1
Latvia		8	11	19
Lithuania		12	20	32
Moldova, Republic of		0	2	2
Netherlands		0	2	2
Norway		40	82	122
Poland		3	17	20
Portugal		1	8	9
Romania		4	23	27
Russian Federation		5	16	21
Serbia		2	2	4
Slovakia		12	21	33
Slovenia		2	4	6
Spain		8	17	25
Sweden		64	102	166
Switzerland		14	39	53
Turkey		0	3	3
Ukraine		3	11	14
United States		1	4	5
		498	987	1485

Discover Japan's Varied Terrain, Hot Spas and Delicacies

World Masters Games

Orienteering Competition

May 20-28, 2022
Kansai, Japan

The World Masters Games (WGM) are an international multi-sport athletic competition held every four years by the International Masters Games Association (IMGA). It is the world's largest lifelong sports competition.

In 2022 (Postponed from 2021), the Games will be held in Japan, the first hosting country in Asia. This auspicious 10th edition will be held in the western part of Japan — the Kansai region.

Orienteering has now become a WGM competition!

The competitions will be conducted according to the IOF Competition Rules 2021 and the 2021 **WMOC** Manual.

All orienteers aged 35 or over on December 31, 2022 are eligible to compete. The following age categories will be offered: Men's / Women's: 35, 40, 45, 50, 55, 60, 65, 70, 75, 80, 85, 90

Kobe, a charming port city surrounded by mountains and sea, has incorporated Western culture and fused as a unique Kobe culture, since the opening of Kobe Port 150 years ago.

Visitors can enjoy the nature of Mt. Rokko, Arima-onsen (one of the Japan's oldest hot springs), busy waterfront areas, and Japanese sake breweries supported by its high-quality clean water. World famous Kobe beef and Kobe sweets are also waiting for your arrival!

Hyogo

Tokyo

The Tajima region, where forest terrains are located, is famous for its natural beauty, such as mountains, rivers, waterfalls and the Sea of Japan. After finishing races, you can heal your body at hot springs and enjoy local cuisine using seafood, Tajima beef, rice and vegetables cultivated in an eco-friendly way.

Registrations can only be done via the WGM2021 website:
<https://wmg2021.jp/en/games/entry.html>
Registrations for orienteering will commence on late August, 2021 (TBS) and close on April 10, 2022.

Contacts



<https://wmg2021-orienteering.jp/en/>



info@wmg2021-orienteering.jp



WORLD MASTERS ORIENTEERING CHAMPIONSHIPS



8th -16th July 2022



Foresta Umbra - ph Vanda Biffani



Peschici - ph Vanda Biffani



ph Giuseppe Tricarico De Bonis

- 8th July accreditation
- 9th July Model event sprint
- 10th July Sprint Qualification - Peschici
- 11th July Sprint Final - Vieste
- 12th July Rest Day, model event forest
- 13th July Forest Qualification - Foresta Umbra
- 14th July Middle Final - Foresta Umbra
- 15th July Rest Day, model event long
- 16th July Long Final - Foresta Umbra

FERROVIE DEL GARGANO OFFICAL PARTNER WMOOC 2022 FOR:



- ▶ Bus/train transportation from main airports (Bari, Roma, etc) to event center/terminal WMOOC 2022 in Vieste
- ▶ Transportation service from Event centre WMOOC 2022 Bus Terminal Vieste to hotels/accommodation in Gargano
- ▶ On request transfer with own bus (minimum 40 pax)
- ▶ Info desk Ferrovie del Gargano / WMOOC 2022 at Bari's airport
- ▶ Service and assistance flights/trains tickets



Direct contact Ferrovie del Gargano
WMOOC 2022 at following mail:
fdg.viaggi@fergargano.it
T. +39 342 6293818

www.wmocitaly.eu

first deadline 01th October 2021



Székesfehérvár



HONVÉDELMI SPORTSZÖVETSÉG

