



Slovak Championship

WRE

Deer antler Cup
Cow horn Cup

Bulletin 1

Organizer Slovak Orienteering Association (SZOŠ)

Technical support

[ŠK Sandberg Bratislava](#)

[Obecný úrad Kamenec pod Vtáčnikom](#) (municipal authority)

Dates and classification

25th September 2021 – Slovak O-Championship - Middle Distance - World Ranking Event – open individual middle distance day competition with specified order of control points

26th September 2021 – Slovak O-Championship – Relay – open relay day competition with specified order of control points for 3-member teams

Event center Public camping site in Gepňárova dolina (valley), Kamenec pod Vtáčnikom,
[N48° 38.994' E 18° 34.719'](#)
Bus stop: Kamenec p. Vtáčnikom,, sídlisko Stávky, 3km

Terrain Rugged hilly terrain, mostly clear forest with very good visibility. Lots of rock features: towers, cliffs, boulders and boulder fields, also several more complex rock formations. Terrain runnability varies from very good to difficult (especially in troublesome boulder fields). Certain areas contain landslide earth landforms (valleys, knolls, depressions, terraces) that complement rock formations.
We recommend taping.
[Pictures from the competition area](#)

Classes 25th September – Slovak O-Championship - Middle Distance, WRE
M-14, M-16, M-18, M-20, M21-, M35-, M40-, M45-, M50-, M55-, M60-, M65-, M70-
W-14, W-16, W-18, W-20, W21-, W35-, W40-, W45-, W50-, W55-, W60-, W65-, W70-

25th September – Public race

MWR, M-10, W-10, M-12, W-12

K3 difficult course of length about 3 km, no restrictions on age or gender

N simple short course for beginners

26th September – Slovak O-Championship – Relay

M-14, M-18, M19-, M105-, M135-, M165-

W-14, W-18, W19-, W105-, W135-, W165-

MW-14 are 2-member club relays

26th September – Public race

M-10 and W-10 (2-member club relays)

OPEN (3-member relay with no restrictions)

On both days, children can participate in a child-picture-orienteeing course in the event center (free of charge, no prior registration needed, arbitrary individual starting time).

If a class does not have enough participants, it might be merged with another.

Estimated winning times

According to Rules.

The course for M-20 will be longer: estimated winning time 30 minutes.

Entries

Deadline **17th September 2021**. All entries via [IS SZOŠ](#), EN version available.

Late entries only up to the number of available maps (5 per class).

WRE: IOF ID of each participant in WRE categories (M/W 21-) has to be specified in the note in the entry form. IOF ID might be found in [IOF Eventor](#), if not, registration in IOF Eventor is necessary.

IOF ID provision in the entry form is mandatory for participation in WRE race.

Relay entries: all relay team members are supposed to register as individuals and include in the remark the name of their relay team and the leg they will run separated by a hyphen (e.g. SKS7-2). The number of relay teams per club is the number of unique relay team names; the names of missing members of an incomplete relay team are expected to be added at the on-site registration in the event center.

Withdrawals: If withdrawn between 18th and 24th September, 50% of the entry fee is refunded. No fee refunds for later withdrawals.

Entry fees

Slovak O-Championship - Middle Distance, WRE

MWR, M/W -10, -12, -14, -16, -18, N	9 €
M21-, W21- (WRE)	12 €
other classes	11 €

Slovak O-Championship – Relay

M/W-10, -14	16 € / team
M/W-18	24 € / team
other classes	27 € / team

2 € per day for renting a SI card. The loss of a rented card is charged 30 €.

Entries after deadline have fee increased to 150 %, on-site additional entries to 200 % (these surcharges do not apply to MWR and N).

All other fees should be paid together with the entry fee.

Payments

Entry fees, together with all other fees (food, accommodation etc.) should be paid to the account

IBAN: **SK90 8330 0000 0020 0178 4563**

BIC/SWIFT: **FIOZSKBAXXX**

before the entry deadline. Please include the name of the paying subject in the "Remittance Information" field.

Start oo

<u>25th September</u>	<u>Middle distance</u>	<u>13:00</u>
Classes MWR, M/W-10 and N have free starting order		
<u>26th September</u>	<u>Relay</u>	<u>9:30</u>

Catering

On Saturday and Sunday, there will be a buffet in the event center.

It is necessary to order meals beforehand via [IS SZOŠ](#) (3 €, deer goulash).

The entry form offers an option to order breakfast on Sunday for those accommodated in the gym of the elementary school in Kamenec (2 €, bread, sausages, tea). The breakfast will only be prepared if there are at least 20 orders.

Accommodation

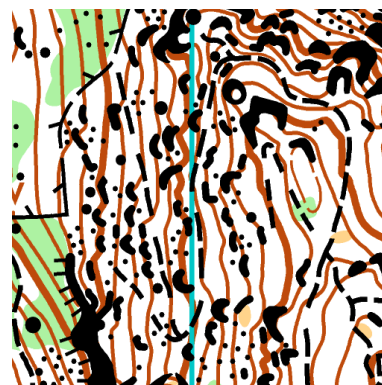
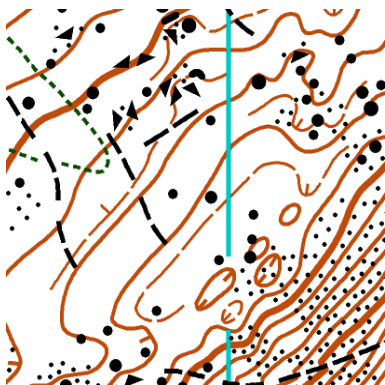
The gym in the elementary school in Kamenec pod Vtáčnikom (on Saturday night); 3 €/person; order via [IS SZOŠ](#). Accommodation with beds is not provided by the organizer. It is possible to set up a club tent in the event center and stay overnight from Saturday to Sunday.



Map 25th September Končitá 1: 10 000, e5 m; Končitá 1: 7500, e5 m (M/W 40+)
26th September Hrádok 1: 10 000 e5 m; Hrádok 1: 7500, e5 m (M/W 135+)

Specification: ISOM 2017-2

Mapmakers: Roman Slobodyanyuk, Marian Cotirta, Martin Jonáš



Forbidden area

From the day of publication of this invitation, the [forest south-east of Kamenec pod Vtáčnikom](#) comprises a forbidden area. Marked trails (as determined by [KST](#)) are the only exception.

Punching SportIdent, contactless system AIR+ will be used

Prizes Winners of the classes W21- and M21- in Slovak Middle Distance Championships will be awarded the [perpetual trophies Jelení paroh and Kravský roh](#), respectively.

Protests In writing to the main referee; deposit 10 €.

Information Web: <http://sandberg.orienteering.sk/paroh>
E-mail: sandberg.orienteering@gmail.com,
Phone: Rado Jonáš +421 902 488 202

Officials	event director	25.9. Barbora Vorlíčková	R3
		26.9. Rado Jonáš	R1, IOF SEA
	main referee	Štefan Šurgan	R1
	course setter	Martin Jonáš	R2
	secretary	Marta Jonášová (registration) Martina Brňáková (start lists, results)	

IOF Adviser Rado Jonáš, IOF SEA

Rules The races will be run in accordance with the official Slovak rules (Pravidlá OB SZOŠ, Súťažný poriadok and Vykonávacie predpisy for 2021) and IOF Rules for WRE.

VISA Check Slovak [Ministry of Foreign affairs](#) site, it is practically necessary to be vaccinated against COVID-19 disease.

Points of interest

Rock formations Makovište, Končitá, Hrádok (a rock-climbing area), Veľká skala.

[Thermal park Chalmová](#)

A farm producing cow and sheep dairy products is located nearby.

COVID-19 The competition will be organized according to all COVID-19 measures applicable to the Prievidza district at the time of competition. More information will be included in the instructions.



Warnings

Competitors accept the hazards associated with participating in the event, and that they take part at their own risk, are responsible for their own safety, and have no claim against the Organizer in case of injury during the event, or caused by it later on.

Marketing and sales activities in the event centre only with the permission of the director.

By taking part in the event, every participant consents to storing his personal data (name, class, club) in the information system of the Slovak Orienteering Association and publishing them on the event websites (in entry and start lists and in the results).

Unless you ask the photographer for a specific exclusion, by taking part in the Event, you consent to be photographed, and waive any and all rights of publicity or privacy and grant the Organiser permission to utilise your image in documentation and marketing materials.

Barbora Vorlíčková, Rado Jonáš
event director

Štefan Šurgan
main referee

Rado Jonáš
IOF adviser

This invitation was approved by Slovak Orienteering Association on June 28, 2021.

