

-middle distance-

## **The 10<sup>th</sup> Japan Orienteering Championships 2021**

-long distance-

## **The 48<sup>th</sup> Japan Orienteering Championships 2021**

**IOF World Ranking Event / M21E & W21E**

**October 23/24, 2021**

※日本語版募集要項は7月下旬公開予定です。

Venue: BLANCHE TAKAYAMA Ski Resort

Address : Daimon Takayama, Nagawa-machi, Nagano-Pref, 386-0601, Japan

Google map: <https://goo.gl/maps/3DrwCp59JHJXhhtw5>

Event Organizer Japan Orienteering Association

IOF Event Adviser Norihisa FUJII

Event Director Saho KUME

Event Secretary Yu TANAKA

Technical Director Yutaro MIYANISHI

Course Planner (middle) Ryosuke NISHISHITA

Course Planner (long) Go INAMORI

## **1. General Information**

### **■ Access to the event venue**

#### **By car**

30 minutes from Okaya IC (Nagano Expressway)

50 minutes from Suwa-Minami IC (Chuo Expressway)

55 minutes from Saku-Minami IC (Chubu Oudan Expressway)

Note: Visits by car is strongly recommended.

#### **By train**

The nearest station is Chino station (Chuo Line, JR-EAST)

The organizer plan to provide a bus from Chino Station to the venue. The information will be published in the bulletin for Japanese by the end of July. If you need the information in English, please email us.

### **■ Contact address**

e-mail: [ajoc@orienteering.or.jp](mailto:ajoc@orienteering.or.jp)

Contact person about VISA: Kimiya OCHIAI ([ochiai.kimiya@gmail.com](mailto:ochiai.kimiya@gmail.com))

## 2. Competition Information

### ■ General information

	Oct. 23	Oct. 24
<b>Race</b>	Middle Distance	Long Distance
<b>First Strat</b>	10:00	9:00
<b>Finish close</b>	15:00	15:00

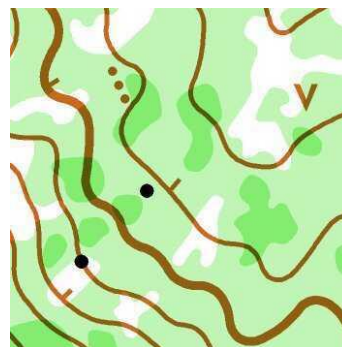
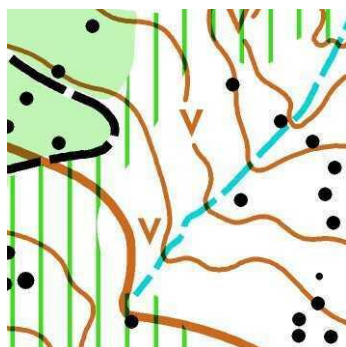
### ■ Race information

	Oct. 23 Middle distance	Oct. 24 Long distance
<b>Start interval</b>	2 minutes	2 minutes
<b>Scale</b>	1:10000	1:15000
<b>Contour interval</b>	5m	
<b>Specification</b>	ISO2017-2	
<b>Map</b>	no relevant old map available	
<b>Punching system</b>	SPORTident system (SI-card)	

### ■ Terrain information

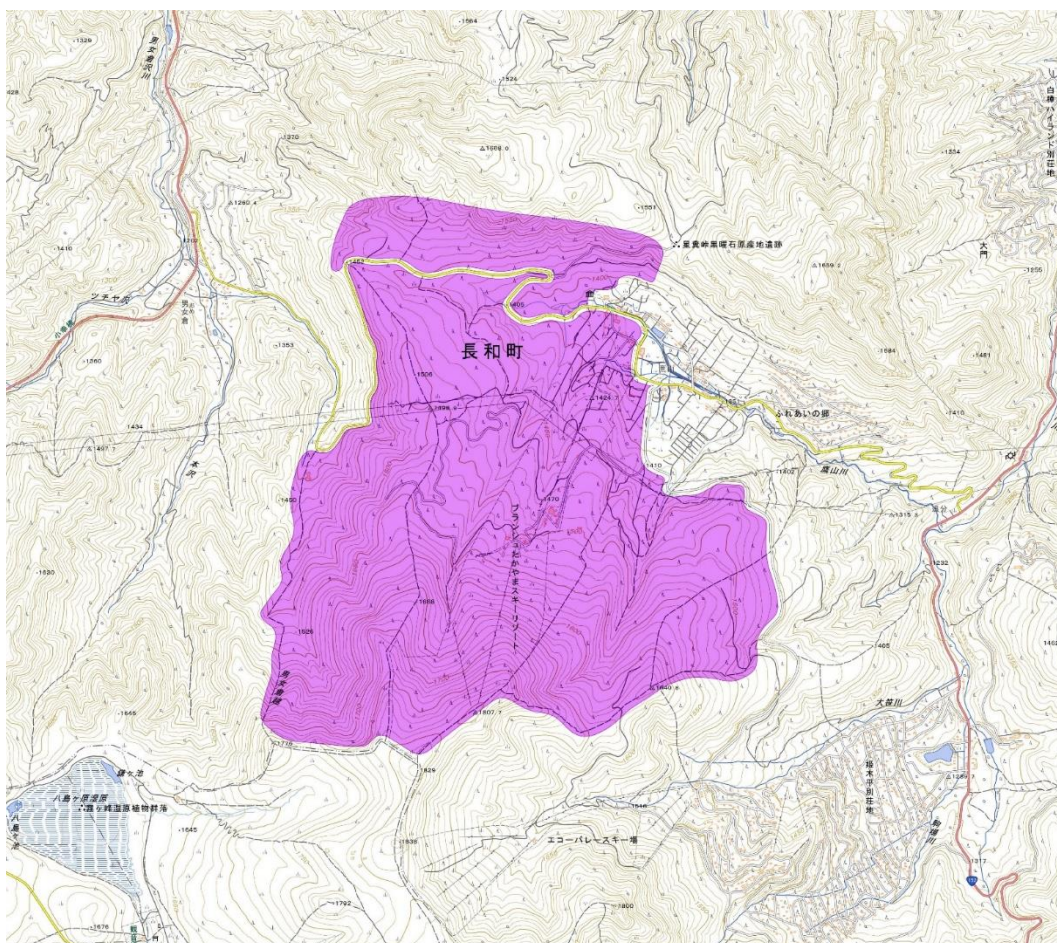
This terrain is located at an altitude of about 1350 to 1750 meters above sea level and consists of the Blanche Takayama Ski Resort and the surrounding mountain forest. Forest (A) (405) has very good visibility. Main competition area has few roads and paths, but in some areas, there are many roads for forestry work. Across the roadway, the terrain is higher on the south side in the south and higher on the north side in the north. The slope is generally gentle, but steep at the west end of the terrain. There are few complex terrains. Holes and rocks are scattered. Few marshes, rivers and ponds.

### ■ Sample maps



## ■ Embargoed area

According to the IOF Competition rules (§ 26.5), embargoed areas are forbidden for all competitors.



## ■ Class (World Ranking Event)

**W21E and M21E are the classes for World Ranking Event.**

	Oct. 23 Middle Distance		Oct. 24 Long Distance	
Class	Length	Winning time	Length	Winning time
W21E	4km	35 minutes	8km	80 minutes
M21E	5km	35 minutes	12km	95 minutes

Note 1: There will be a restriction on the entry of foreign competitors in this race.

**The organizer will check the world ranking and inform you whether you can entry or not.**

Competitors must have an IOF ID. Visit IOF eventor to obtain or search for your IOF ID, and enter your IOF ID when you register.

Note 2: There is Non-World Ranking Event class. The information will be published in the bulletin for Japanese by the end of July. If you need the information in English, please email us.

## ■ Entry fees

	Class	Regular	University students	18 and younger
<b>Oct. 23</b> <b>Middle distance</b>	W21E	5500 JPY	3500 JPY	2500 JPY
<b>Oct. 24</b> <b>Long distance</b>	/M21E	7500 JPY	4500 JPY	3000 JPY

Note: Not including SI-card rental fee. If you use rental SI-card, rental fee 200 JPY is added to the entry fee per each day.

## ■ Clothing and shoes

There are no regulations regarding clothing and shoes.

Only GPS (GNSS) equipment without image display is allowed to be used.

## ■ Climate and Hazards

Average value over the past 30 years are as follows.

The observation point: Tateshina (Elevation: 715m)

average temperature (°C)	10.1
maximum temperature (°C)	16.3
minimum temperature (°C)	5.0

No special hazards or creatures have been found in the terrain.

## ■ Training Opportunity

We plan to offer opportunities to practice in Nagano Prefecture in September.

### 3. Entry procedure

**Entry closing date: Sunday, October 3, 2021**

**Payment closing date: Monday, October 4, 2021**

**Entries can be made through web entry system.**

#### ■ Web entry system

Please visit following URL <https://japan-o-entry.com/event/view/767> and fill the entry form.

Note1: Using this entry system, you can pay the entry fee by credit card

Note2: This entry system is written by Only Japanese. If you need instructions on how to use it, please visit following URL.

[https://japan-o-entry.com/public\\_file/guide\\_for\\_foreign\\_customer.pdf](https://japan-o-entry.com/public_file/guide_for_foreign_customer.pdf)

#### ■ Payment

Payment can be made by the **web entry system**. You can pay the entry fee by credit card.

### 4. Other information

#### ■ Visa

Please ask your nearest Japanese Embassy for further details or visit following URL for latest information.

[http://www.mofa.go.jp/j\\_info/visit/visa/](http://www.mofa.go.jp/j_info/visit/visa/)

#### ■ Accommodation

There are many wonderful dormitories and hotels in Nagawa-machi. Please check following URL.

[http://www.c-trail.com/navi\\_stay/](http://www.c-trail.com/navi_stay/)

Note: Sorry for the lack of English information. If you click on the image of each accommodation, you can get information from their websites.

#### ■ Transportation

If you need support about transportation, please ask our contact.

e-mail: [ajoc@orienteering.or.jp](mailto:ajoc@orienteering.or.jp)

#### ■ Web site/SNS

Web site: <http://www.orienteering.or.jp/joc/2021/>

Twitter: <https://twitter.com/orienteeringJOC>

Instagram: <https://www.instagram.com/orienteeringjoc/>