



**AUSTRALIAN ORIENTEERING CHAMPIONSHIPS
TASMANIA, AUSTRALIA. SEPTEMBER 25 - OCTOBER 3, 2021**




WORLD RANKING EVENTS - BULLETIN 1

Introduction

You are invited to participate in the Australian Orienteering Championships carnival, including three World Ranking Events (Sprint, Middle and Long), to be held in Tasmania, Australia from September 25 to October 3, 2021.

Organiser: Orienteering Tasmania Inc.
Event Director: Warwick Moore
Technical Director: Roger Harlow
Contact details: Event Director Phone: (61) 487 999 904
 Email: warwick.moore@aoc2021.tasorienteeing.asn.au
Web page: www.aoc2021.tasorienteeing.asn.au
Venue: Northeastern Tasmania, including Launceston, St Helens, Bicheno and Avoca.

Event Programme (including IOF World Ranking Events)

DAY	DATE	EVENT	VENUE AND MAP	CONTROLLER	PLANNER
Sat	25/9/21	Australian Sprint Championships  WORLD RANKING EVENT	Launceston University of Tasmania, Newnham	Paul Pacqué	Kim Nankervis
Sun	26/9/21	Australian Middle Distance Championships  WORLD RANKING EVENT	St Helens Hunt Tin Mine	Lindsay Pender	Christine Brown
Mon	27/9/21	Australian Relay Championships	St Helens Golden Fleece	David Marshall	Randall Hope
Tues	28/9/21	Australian Schools Sprint Championships Turbo Chook Day 1	Bicheno Waubadebar	Jo Bissett	Donelda Niles
Wed	29/9/21	Australian Schools Long Distance Championships Turbo Chook Day 2	St Helens Mt Pearson	Mike Calder	Jeff Dunn
Thur	30/9/21	Australian Schools Relay Championships Turbo Chook Day 3	St Helens Mt Pearson	Darryl Smith	Bernard Walker
Fri	1/10/21	Model Event Rest Day	St Helens Bosses Rocks	Wayne Griggs	Helena Griggs
Sat	2/10/21	Australian Long Distance Championships  WORLD RANKING EVENT	St Helens Bells Marsh	Clare Hawthorne	Greg Hawthorne
Sun	3/10/21	Tasmanian Middle Distance Championships	Avoca The Rajah's Rock	Dion McKenzie	Gary Carroll

Explanatory note:

IOF Senior Event Advisor: Cathy McComb

There are three World Ranking Events – The Australian Sprint Championships (September 25), The Australian Middle Distance Championships (September 26) and the Australian Long Distance Championships (October 3).

The Australian Relay Championships will be held as part of the programme, as will the Australian Schools Championships, Sprint, Long and Relays. For adult competitors there will be a three day competition on the days of the schools championship events and at the same venue.

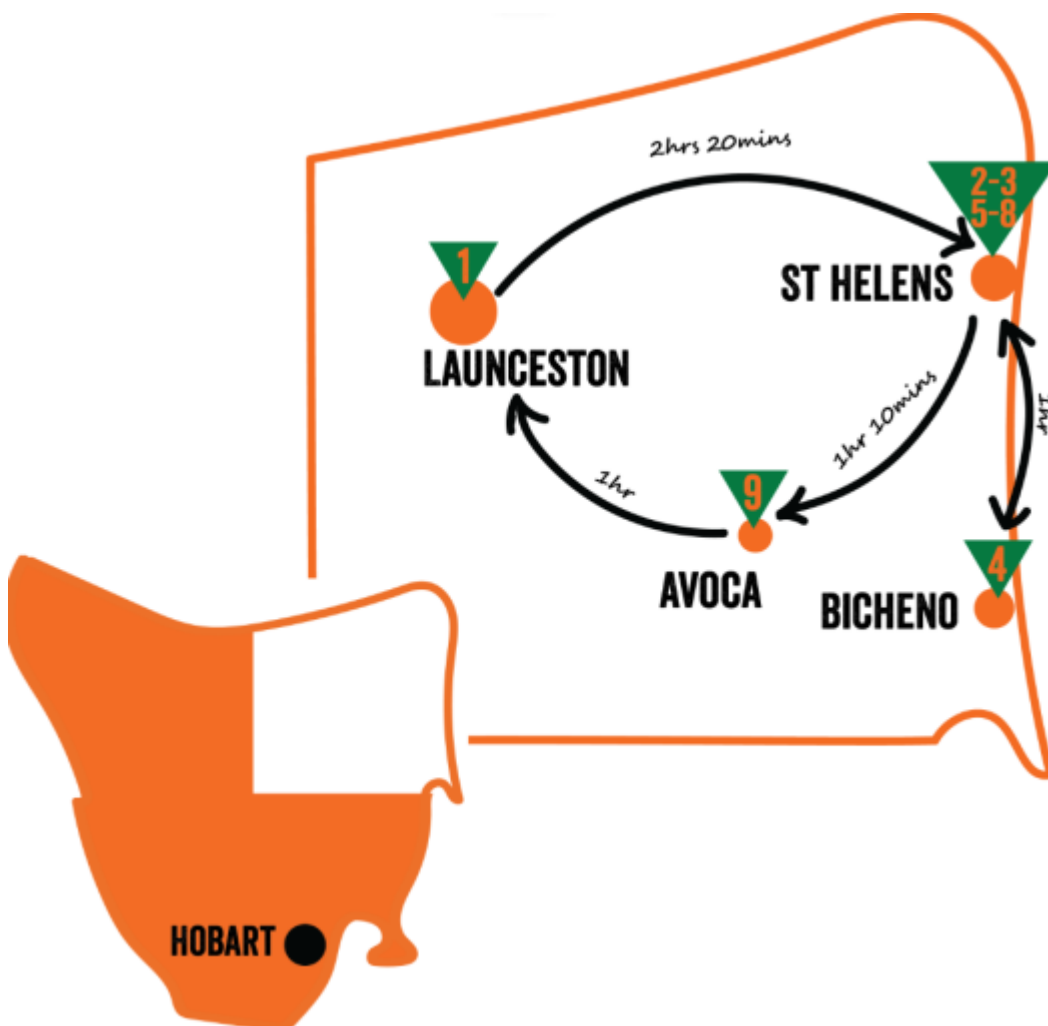
The final event is the Tasmanian (State) Middle Distance Championships which will be held at Avoca.

Restrictions

For Health and Safety reasons, any competitor who is experiencing the symptoms of Covid-19 will not be permitted to participate.

There will be no Enter on the Day classes.

Competition venues are identified on this map of northeast Tasmania.



Embargoed areas

In the lead up to the Carnival the following areas are embargoed from 4 December 2019 until 6 October 2021 (except to attend the AOC2021 events themselves). These embargoes are in accordance with the Rules. This means these areas may not be used for training purposes (including scouting the areas). Anyone breaking any embargo will be disqualified from competing at the relevant event. If you need to visit any of the embargoed areas for any reason please Contact Us.

Australian Sprint: The University of Tasmania, Launceston Campus.

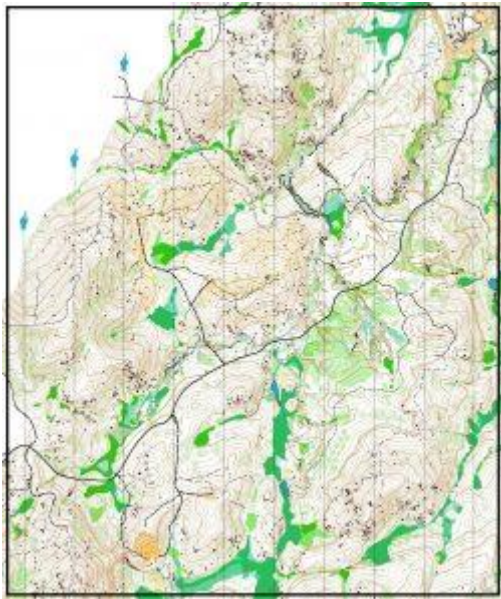
No reconnoitring or training including training with an existing orienteering map of the campus is permitted. Other activities including other sports events within the campus are permitted. The relevant old map is known as University of Tasmania – Launceston.

Australian Middle: NEW Area! Ericksons Road, Goshen Tasmania, from a point 41°18'S, 148° 7'E south to the junction with Argonaut Road at 41°19'S, 148° 7'E and terrain extending 2 km either side of that length of road. All training and walking around the area (i.e. scouting the area) is forbidden.

Schools Sprint: Bicheno Township, Tasmania, from Murray Street in the west including all the streets and foreshore to the north and east, and extending south to Weily Avenue. The Whalers Lookout and Lookout Rock State Reserves are included. No reconnoitring or training including training with the existing orienteering map of the town is permitted. Other activities including the normal activities of commerce in the town are permitted. The relevant old map is known as Waubadebar – Bicheno.

Schools Long & Relay: The Mount Pearson State Reserve, Tasmania, including all the terrain covered by the old map known as Mt Pearson. All training and hiking around the area (i.e. scouting the area) is forbidden.

Australian Relay: Argonaut Road, St Helens, Tasmania, 3 km to north and 3 km to south of the road, from a point 41°19'S, 148° 8'E (quarry access road) in the west to 41°18'S, 148° 9'E (moonscape) in the east. No reconnoitring or training including training with one of the existing Golden Fleece map of the area is permitted.



This is the section of the Golden Fleece map embargoed for the Australian Relay.

Australian Long: NEW Area! Bells Marsh Forest Reserve, Tasmania, from the gate off Hodges Road to the west and along Bells Marsh Track to Ansons Bay Road in the east, all the terrain south to the Georges River and east to the private land at Priory. All training and hiking around the area (i.e. scouting the area) is forbidden.

Tasmanian Middle: Castle Cary Regional Reserve Avoca, Tasmania. All the terrain described by the existing map Rajah Rock as well as its extension west towards Storeys Creek Road. No reconnoitring or training including training with the existing orienteering map of the area is permitted.

World Ranking Events

Australian Sprint Championship

This event will be held at the University of Tasmania campus at Newnham, Launceston.

Terrain: University campus with areas of parkland, ornamental gardens and detailed buildings.

Map Scale: 1:4000

Contour interval: 2.5m

Winning time: 12 – 15 minutes

Australian Middle Distance Championship

This event will be held on a new map located west of St Helens.

Terrain: The terrain has a mix of tin mining and undulating spur gully with some granite detail. The eucalypt forest is generally open but recovery from a bushfire several years ago has started to impact visibility and runnability in some areas. Marsh areas are generally runnable and the tea tree along the creek is passable but thicker pockets may be encountered. Three dangerous pits exist on the map marked by a black pit symbol and flagged by hazard tape in the terrain.

Clothing: Full body clothing is advised.

Map Scale: 1:10000

Contour interval: 2.5m

Winning time: 35 minutes

Australian Long Distance Championship

This event will be held on a new map located northwest of St Helens.

Terrain: Undulating to steep gully spur with moderate granite cover. Generally open eucalypt forest with thicker tea tree pockets along creeks and some gullies, where it is mapped as Vegetation: fight. There is a small area of tin-mining terrain on the map.

Clothing: Full body clothing is advised.

Map Scale: 1:10000

Contour interval: 5m

Winning time: 90 minutes

Other Events

Competitors in world ranking events are welcome to enter the Australian Relay championships, the Turbo Chook 3 Day event (held in conjunction with the Australian Schools Championships), the Model Event and the Tasmanian Middle Distance Championship at Avoca.

Punching System

The SPORTident and SPORTident Air+ systems will be used for all events however competitors must punch in the traditional manner at the finish.

Training Opportunities

Training maps for World Ranking Events will be available from 1 September 2021.

Australian Sprint Championship (WRE): Inveresk, 1:4,000, 2.5m contours, Windsor Park Precinct 1:5000 2.5m contours. Trevallyn Recreation Area 1:10,000, 5m contours.

Australian Middle and Australian Long Championships (WREs): Maps in the St Helens area: Littlechild Creek, Livelys Bog, 1:10,000 or 1:15,000 maps, 5m contours.

Maps will be available at the Event Centres or upon request from Roger Harlow for all registered runners and officials. Please contact Roger on 0417 684 463 or email rogerharlow@gmail.com.

Event Classes

Classes offered in the World Ranking Events are those specified in the IOF Competition Rules.

Entries

Entries are only available on the Australian **Eventor** online entry system at the following location:

<https://eventor.orienteering.asn.au/Events?startDate=2021-09-20&endDate=2021-10-10&organisations=8>

Entries Close on May 31 (for Early Bird entries) and on August 22 for standard entries. Check the event web site for the Entry Fees (in Australian Dollars) and Refund Policy at the following location:

<https://aoc2021.tasorienteering.asn.au/entry-fees-policies/>

Eventor will not allow you to enter without first paying the entry fees, so entry fees must be paid at the time of entry.

Weather and Climate

The weather in Tasmania in September and October is generally mild. The average mean overnight minimum for the region is 7degrees C and the daily maximum is 18 C. However, warmer and colder days are possible. The average number of rain days for September is 12 and the mean monthly rain 60mm.

Travel to and within Tasmania

Tasmania can be reached by air on direct flights from Melbourne, Canberra, Sydney, Brisbane and on limited flights from Auckland (NZ).

Alternatively, you can come by ferry on the **Spirit of Tasmania**. See our website for special deals on the Spirit. <https://aoc2021.tasorienteering.asn.au/travel-planning/>

There is no suitable public transport to the event areas so competitors will need to hire a vehicle. Due to Covid-19 hire cars are in short supply so book early. We have an arrangement with AutoRent Hertz car hire. They will give orienteers a 10% discount on car hire if you quote the code word available on our website. <https://aoc2021.tasorienteering.asn.au/>

Travel to Australia - Visas

Information on travelling to Australia has been complicated by the current Covid-19 pandemic. Citizens of some countries require a visa. Information about applying for a visa can be found at the following web site.

<https://covid19.homeaffairs.gov.au/i-want-apply-visa#toc-0>

Accommodation

There are various alternatives available for accommodation in both Launceston and St Helens, ranging from camping to cabins, to hotel rooms. The events will be held during the Tasmanian school holiday period when accommodation is usually heavily booked. We advise you to book accommodation well in advance.

For advice see the event web site: <https://aoc2021.tasorienteeing.asn.au/travel-planning/>

We recommend the St Helens Big4 Holiday Park.

Food

St Helens and Launceston have a variety of eateries including take away venues and restaurants. All event arenas are near towns where food is available. At the time of writing we hope to provide catering at event arenas offering food suitable for orienteers. This will depend on Covid-19 restrictions in force at the time of the championships.

Sponsors



The Australian Orienteering Championships and Australian Schools Orienteering Championships, 2021 is supported by the Tasmanian Government through Events Tasmania.

SUPPORTED BY



Tasmanian
Government

The Australian Orienteering Championships and Australian Schools Orienteering Championships are supported by the Tasmanian Government through the Division of Sport and Recreation's National Championship grant programme.

