

Федерация спортивного ориентирования
Республики Казахстан

QARQARALY-2021

INTERNATIONAL ORIENTEERING TOURNAMENT

July 27- August 2, 2021

Bulletin 1



Welcome to Karkaralinsk!

Karkaraly National Natural Park was organized in 1998 in the Karaganda region. The area of the park is 90.3 thousand hectares and covers the mountain ranges of Karkaraly and Kent. Here are the famous mountain lake Shaitankol, rocks Stone Gate, grotto Tent, caves of primitive man and much more. 45 species of animals, 122 species of birds, 15 species of fish, 244 species of plants is protected by the Park.

The landscape of the reserve is composed of low mountain ranges, dissected lakes and rivers. Once upon a time there were high mountains here, which were destroyed under the influence of time and wind, forming many smaller hills and ridges. Here are striking alternation of rocky ridges and valleys. But granite plates seem to be superimposed on each other with stone mattresses of outlandish shape. Water keys along the mountain gorges run down and start small rivers. Especially picturesque pits in granite rocks filled with water. The small town of Karkaraly is famous for wooden buildings, narrow streets, and its inhabitants for their benevolence and hospitality. Several types of tourist routes are offered for guests.

ORGANIZERS

Committee for Sports and Physical Culture of the Ministry of Culture and Sports of the Republic of Kazakhstan

Orienteering Federation of the Republic of Kazakhstan

Department of Physical Culture and Sports of the Karaganda region

Orienteering Federation of the Karaganda region

Event Director: Vasily Korenkov (KZ); e-mail: korenkov.vasillii@mail.ru

Technical Director: Tatiana Kubrak (KZ); e-mail: tatjana-o.kz@mail.ru

IT Manager: Zhanbolat Dowit (KZ); e-mail: zhanbo1994@mail.ru

Maps: Alexander Novikov (RUS), Sergey Efimov (RUS)

Course setting team: Alexander Novikov (RUS), Sergey Efimov (RUS)

Office: Riana Konnykh (KZ); +7 (701) 745 54 20; e-mail: rika.orient@gmail.com

IOF EVENT ADVISER

Dmitry Popov (RUS)

VENUES

QARQARALY-2021 International Orienteering Tournament will take place on the territory of the Karkaraly State national park, Karaganda region. Karkaraly area chronicle of at least two thousand years of the history of nomadic civilizations, firmly imprinted on the ground and stones. Karkaraly are the oldest and the youngest.

The nearest settlement of the region - Karkaraly (7 km) is a unique city with its architectural features and rich history. The city itself is a center of attraction for numerous tourists with many cultural monuments. It is located 220 kilometers southeast of Karaganda, at an altitude of 815 meters above sea level. The distance from Nur-Sultan is 391 km (about 5 hours by car), from Almaty -1 217 km.

VISA & COVID-19 RESTRICTIONS

May require a visa to enter to Kazakhstan territory for citizens of other States. Full information about entry rules and visa requirements see [here](#).

Visas for a stay in Kazakhstan up to 30 days are not needed for citizens of the following countries: Australia, Azerbaijan, Argentina, Armenia, Belarus, Belgium, Bulgaria, Bosnia and Herzegovina, Brazil, Great Britain and Northern Ireland, Hungary, Vietnam, Germany, Hong Kong, Greece, Georgia, Denmark, Israel, Spain, India, Indonesia, Jordan, Iran, Italy, Cyprus, China, Korea, Kyrgyzstan, Cuba, Lithuania,

Malaysia, Macedonia, Moldova, Monaco, Mongolia, Netherlands, Norway, UAE, Pakistan, Poland, Portugal, Russia, Romania, Serbia, Singapore, Slovakia, Slovenia, USA, Tajikistan, Turkmenistan, Turkey, Uzbekistan, Ukraine, Philippines, Finland, France, Croatia, Switzerland, Sweden, Estonia, Japan.

The procedure for crossing the state border has been simplified due to vaccination.

TRANSPORT

Karaganda Sary-Arka International Airport (KGF) is connected with Moscow, Novosibirsk (Russia), Ras Al Khaimah (UAE), Almaty, Semey, Shymkent (KZ). You can get by bus or taxi from Karaganda to Karkaralinsk.

Nur-Sultan International Airport (NQZ) is connected with Moscow, Novosibirsk, Omsk, Yekaterinburg, Rostov-on-Don (Russia), Dubai (UAE), Istanbul (Turkey), Frankfurt (Germany), Minsk (Belarus), Kiev (Ukraine). From Nur-Sultan to Karaganda you can get by train, bus, taxi. Further to Karkaralinsk by bus or taxi. You can use low-cost taxi or rent a car or van during the Event.

EVENT CENTER

More about in Bulletin 2.

ACCOMMODATION

There are options for living in different levels and conditions. Accommodation in hotels (economy, business, suite), in houses from the log (economy, business, suite), with and without meals, in tents with and without meals. We hope that everyone will choose a convenient option for themselves.

The organizers recommend: bases and holiday homes Jasdauren, Berloga, Tas-bulak, Shakhtar, Cascade, Zhol Jacques, camping. You can find out more at the Event Office. Request space to book in advance! More about in Bulletin 2.

EVENT PROGRAMME

July 27	Tuesday	Event Center is open, Arrival
July 28	Wednesday	10:00 Middle distance 16:00 Opening Ceremony
July 29	Thursday	10:00 Long distance
July 30	Friday	10:00 Middle distance 16:00 open starts - "Labyrinth," excursions 18:30 Team officials meeting for WRE
July 31	Saturday	10:00 Middle distance (WRE) 16:00 open starts - "Labyrinth," excursions
August 1	Sunday	10:00 Sprint distance 15:00 Prize Giving and Closing Ceremony QARQARALY-2021 16:00 cultural program, excursions
August 2	Monday	Departure

The programme can be corrected.

COMPETITION RULES, CLASSES AND ENTRY REGULATIONS

WRE

- The Competition Rules for IOF Foot Orienteering Events will be applied.
- There is one class for women (Women) and one class for men (Men), there are no age restrictions. (Rules 5.2, 5.3, 5.4)
- All competitors represent a Federation (Rule 6.5)
- A competitor may represent only one Federation during any one calendar year (Rule 6.1)

- Competitors who are representing a Federation shall have full passport-holding citizenship of the country of that Federation (Rule 6.2)

OTHER

- The Competition Rules according with Orienteering Federation of the Republic of Kazakhstan Rules will be applied
- There are classes for women and men: MW 10, 12, 14, 16, 18, 20, 21, 35, 40, 45, 50, 55, 60, 65, 70+, Beginners
- All competitions are individual
- The winner in each class is determined by the sum of the best 4 points of all five races. Points score formula is winner time/athlete time*100.

A separate Prize Giving Ceremony is also held for the WRE start on July 31 for Women and Men.

ENTRY

For WRE-race: Should make separate entry with IOF-Eventor before July 22, 00:00
For all other races: Should make entry with Orgeo.ru before July 22, 00:00
Late entry (via request to Event Office after July 22) cost 200 percent of normal price.
Each athlete must have accident insurance (original), which is submitted to the Event Office.

In connection with quarantine, a preliminary application should be submitted before May 25, 2021. All contestants must carry a vaccination passport or PCR-COVID-test during the competition period.

ENTRY FEE

Per person for one race (at the exchange rate in tenge):

- MW 10, 12, 14, Beginners - 3 euros
- MW 16, 18, 60, 65, 70, 75 - 4 euros
- MW 20, 21, 45, 50, 55 - 5 euros
- Men, Women extra pay for WRE-race - 3 euros
- model event map – 2 euro

Entry fee can be paid in the Event Center.

PUNCHING SYSTEM

SPORTident punching system will be used. You can use personal SI-chip of any series. Also it's possible to rent SI-chip from the organizers. It cost 0.40 euros per each race (at the exchange rate in tenge). In case of lose the rented SI-chip, the team leader or coach or the athlete himself reimburses it's cost.

CLIMATE

At the midday +25+28°, at the midnight 10+18°, mostly sunny.

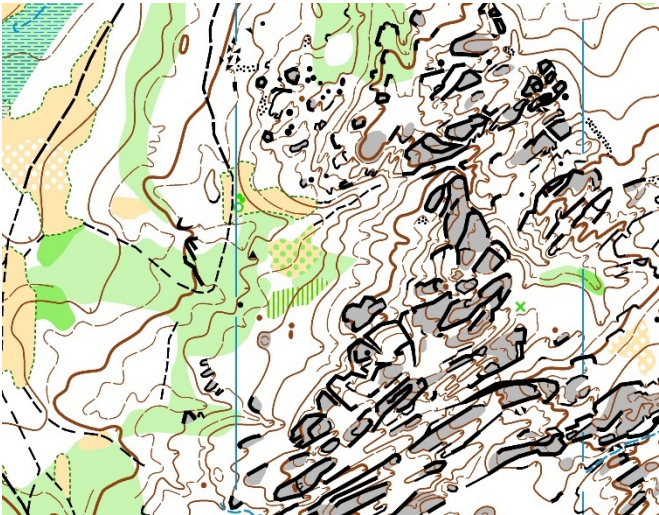
TERRAIN AND MAPS

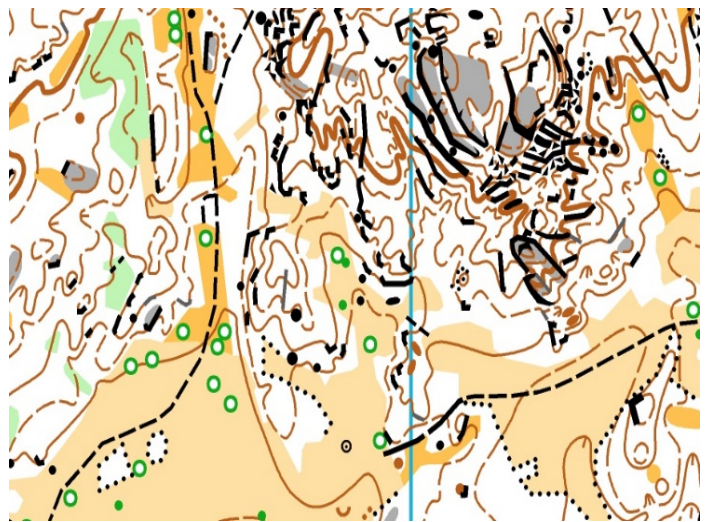
Mixed forest with a predominance of conifers. Forest cover is 95%. The relief is hilly with rocks and stones of various heights and shapes. The maximum hill climb up to 60 meters. Granite slabs are superimposed on each other with stone mattresses.

Maps ISOM-2017, scale 1:2500, 1:5000, 1:7500, 1:10000, contour interval 2,5 m и 5 m will be used. All maps made 2017-2019, renewed 2021.

COURSES

Class	Sprint	Middle distance	Long distance
	Winner (min)	Winner (min)	Winner (min)
Men	12-15	40-45	90-100
Women	12-15	40-45	70-90
M20E	12-15	30-35	70
W20E	12-15	30-35	55
M10	8-10	25	25
W10	8-10	25	25
M12	8-10	25	25
W12	8-10	25	25
M14	10-12	30	40
W14	10-12	30	40
M16	12-15	30	45
W16	12-15	30	45
M18	12-15	30-35	70
W18	12-15	30-35	55
M20A	12-15	30-35	70
W20A	12-15	30-35	55
M21A	12-15	30-35	70
W21A	12-15	30-35	55
M21B	12-15	30-35	70
W21B	12-15	30-35	50
M35	12-15	30-35	60
W35	12-15	30-35	55
M40	12-15	30-35	70
W40	12-15	30-35	55
M45	12-15	30-35	70
W45	12-15	30-35	55
M50	12-15	30-35	60
W50	12-15	30-35	50
M55	12-15	30-35	60
W55	12-15	30-35	35
M60	10-12	30-35	45
W60	10-12	30-35	35
M65	10-12	30-35	40
W65	10-12	30-35	35
M70	10-12	30-35	40
W70	10-12	30-35	35







WELCOME!