

ESOC ■ WCUP ■ WMSOC



01

BULLETIN

21-27 January 2022
Chepelare – BULGARIA



WCUP | ESOC | WMSOC

1. ORGANISERS

BULGARIAN ORIENTEERING FEDERATION / OC “NSA-SIVEN” in co-operation with
Municipality of Chepelare

Event director	Valentin Garkov
Organizing manager	Todor Pedev
Event secretary	Krasimir Danailov
Course setter	Georgi Hadzhimitev

Contact:

E-mail: esoc_wmsoc_2021@abv.bg

Web page: <https://esoc-wmsoc2022.bg/>

Phone: +359 898776334

2. EVENT CONTROLLERS

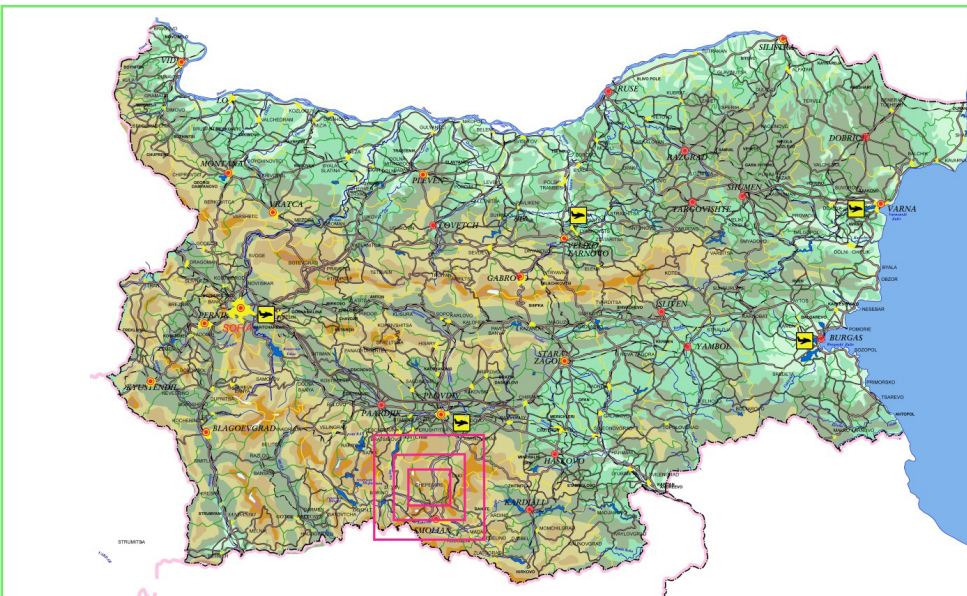
IOF Senior Event Adviser	Per Frost
National Controller	Petar Doganov

3. VENUE

BULGARIA



CHEPELARE - the green heart of Bulgaria



Chepelare is the principal town in Chepelare Municipality, part of Smolyan Province in Southern Bulgaria. It is situated in the central part of the Rhodopes, on the banks of Chepelare River. Chepelare is a popular winter resort with one of the longest ski runs in Southeastern Europe. It is located near Pamporovo, one of the biggest Bulgarian ski resorts.

The town is known for the only ski and snowboard factory in the Balkan Peninsula. The factory cooperates with the ski brand Atomic Skis. Chepelare is also the birthplace of biathlete Ekaterina Dafovska, Bulgaria's only Winter Olympics gold medal winner. The local Sports School provides good conditions for young winter athletes. Chepelare is located 70 km from Plovdiv and 210 km from Sofia.

Coordinates: 41°43'33"N 24°41'4"E

4. PRELIMINARY PROGRAM

DATE	ESOC / WCUP	WMSOC
20.01. Thursday	ARRIVAL	
21.01. Friday	ARRIVAL / MODEL EVENT	ARRIVAL / MODEL EVENT
22.01. Saturday	SPRINT (am)	MODEL EVENT (pm)
23.01. Sunday	SPRINT RELAY – only ESOC (am)	SPRINT (pm)
24.01. Monday	MIDDLE – mass start (am)	MIDDLE (pm)
25.01. Tuesday	Rest day / Practice / VIP race	Rest day / Practice / VIP race
26.01. Wednesday	LONG (am)	LONG (am)
27.01. Thursday	RELAY (am) BANQUET	BANQUET
28.01. Friday	DEPARTURE	DEPARTURE

5. CLASSES AND PARTICIPATION RESTRICTIONS

WCUP (M/W 21)

A federation may enter a maximum of 6 runners in each class in the individual events, and 2 teams in each class in the relay event. Only the best placed team will be counted.

NEW – WCUP U23. A federation may enter 2 men and women!

ESOC (M/W 21):

In each individual competition each federation may enter up to 6 men and 6 women

- Mixed sprint relay: max 3 teams
- Relay: max 2 male teams and 2 female teams

The current European champion of the distance shall be given a wild card for the red group in addition to the ordinary entries from his/her federation. Only competitors representing member federations of the IOF, defined by the International Olympic Committee as belonging to the European continent, can compete in ESOC. Competitors representing other member federations of the IOF are able to participate in ESOC but will not be eligible for European titles, medals or diplomas.

WMSOC (M/W 35, 40, 45, 50, 55, 60, 65, 70, 75, 80, 85, M90):

Open for everybody, the class depends on age.

Long distance: Single race event with random start order.

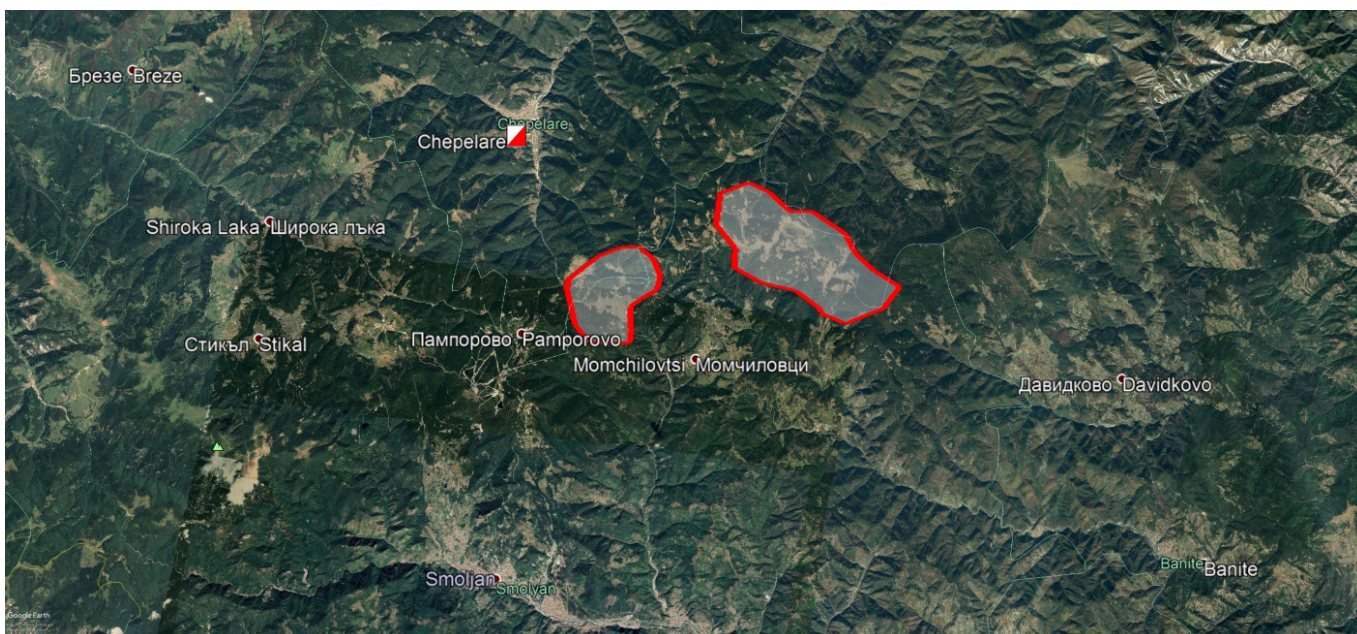
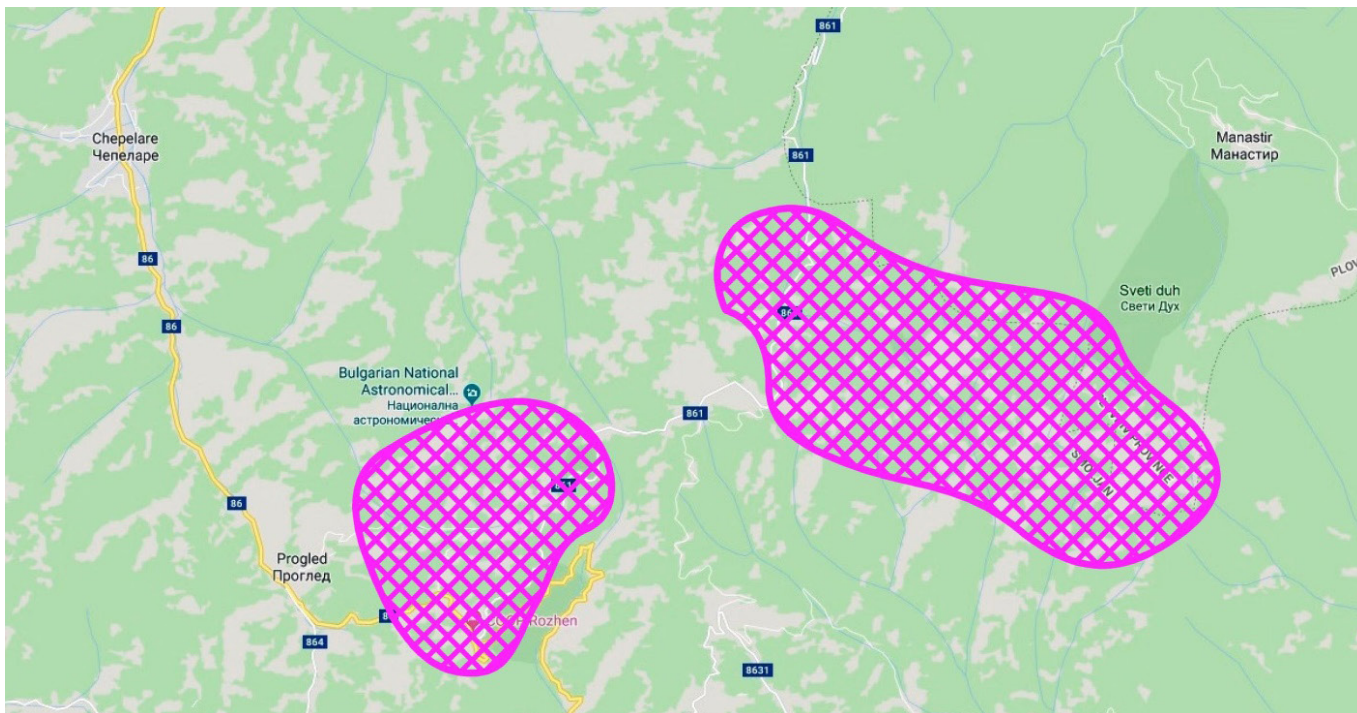
Middle distance: Single race event with random start order.

Sprint distance: Single race event with random start order.

6. OPPORTUNITIES FOR TRAINING

There will be an opportunity to participate in organized trainings (races)!

7. EMBARGOED AREAS



8. PREVIOUS MAPS OF THE AREAS

(Terrains have never been used for ski orienteering.)

