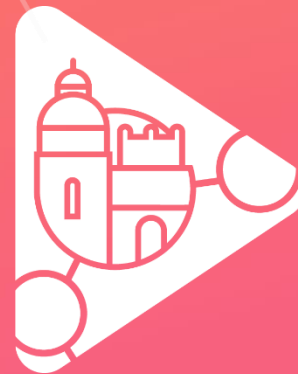




# Bulletin 1

**European Youth**  
**Orienteering Championships**

VILNIUS 2021





**ORIENTEERING.LT**  
LIETUVOS ORIENTAVIMOSI SPORTO FEDERACIJA



## WELCOME

Dear participants, athletes and coaches of the European Youth Orienteering Championship Vilnius 2021.

I am glad that Vilnius will become the capital of the European Youth Orienteering Championship in the summer of next year. The challenges brought about by the pandemic, which the whole world continues to fight, are also opportunities that we can create – all we need is a little bit of creativity, ideas and enthusiasm.

Vilnius is an extremely green city surrounded by beautiful nature. The Neris river flowing through the city formed a carved relief at the end of the ice age, which, I hope, will be an interesting challenge for you during the championship. We have recently installed a 100 km-long trail around Vilnius so that citizens and guests of the city can explore not only the magnificent Baroque Old Town, but also the surroundings of Vilnius on foot, jogging or cycling, thus not only being healthier but also happier to discover the wonderful and inspiring landscape of Vilnius. It is a good time to spend more time in the fresh air, and even more fun to discover new sports as well. To experience all the best impressions!

Good luck in your practice and see you in Vilnius in August!

**Remigijus Šimašius**  
Mayor of Vilnius



**European Youth**  
Orienteering Championships  
VILNIUS2021





ORIENTEERING.LT  
LIETUVOS ORIENTAVIMOSI SPORTO FEDERACIJA



## ORGANISERS:

International Orienteering Federation  
Lithuanian Orienteering Federation

## ORGANISING COMMITTEE:

Event director – Vilius Aleliūnas, [vilius@eyoc2021.lt](mailto:vilius@eyoc2021.lt)  
Technical director – Gintautas Valauskas, [gintautas@eyoc2021.lt](mailto:gintautas@eyoc2021.lt)  
Event Secretary – Vesta Aleliūnienė, [office@eyoc2021.lt](mailto:office@eyoc2021.lt)

## EVENT CONTROLLERS:

IOF Event Adviser – Bo Hem Simonsen  
National Controller – Vitalijus Paulauskas

## CONTACTS:

Lithuanian Orienteering Federation - Žemaitės g. 6, Vilnius, LT-03117  
Phone: +37062024554  
Website: [www.eyoc2021.lt](http://www.eyoc2021.lt)  
Email: [info@eyoc2021.lt](mailto:info@eyoc2021.lt)

## MEDIA:

Tautvydas Vencevičius, [media@eyoc2021.lt](mailto:media@eyoc2021.lt)

## EVENT DATES

Thursday, 19 June – Sunday, 22 August, 2021

European Youth  
Orienteering Championships  
VILNIUS2021



## EVENT VENUE

Vilnius, Lithuania

## DESCRIPTION OF CLIMATE

The climate in Lithuania can be described as humid continental climate found in most Central and Eastern European countries, with mildly warm summers and mild winters. Usual summer daytime temperatures reach 20-25°C, with occasional heatwaves exceeding 30°C. Weather during the summer days can be changeable, with spells of warm and sunny weather being replaced by pouring rain and heavy thunderstorms that occur at the afternoon. July is the warmest month, with an average temperature of 18°C, and the most rainy one.

## EVENT CENTRE

Urbihop Hotel, Ažuolyno g. 7, Vilnius, LT-07196.

Team accreditation and team officials' meetings will be held at the Event Centre.



## GENERAL MAP AND DISTANCES

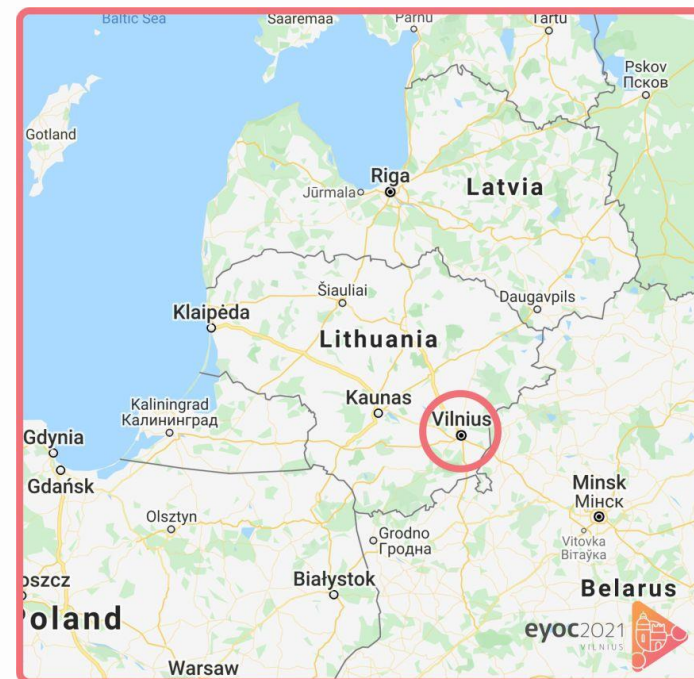
Vilnius International Airport  
11 km to Event Centre

Kaunas International Airport  
95 km to Event Centre

Riga International Airport  
300 km to Event Centre

Vilnius Central Couch Station  
7.5 km to Event Centre

Vilnius Central Railway Station  
7.5 km to Event Centre



## PRELIMINARY PROGRAMME

### DATE

August 19, 2021	Team arrivals, accreditation, Model event Long & Sprint, technical model
August 20, 2021	Long distance, Opening ceremony, Friendship party
August 21, 2021	Relay
August 22, 2021	Sprint, Closing ceremony, team departures



## CLASSES AND RESTRICTIONS

**W16** - for female athletes who are no more than 16 years old on 31 December of the year of the competition (born in 2005 or later).

**W18** - for female athletes who are no more than 18 years old on 31 of December of the year of the competition (born in 2003 or 2004).

**M16** - for athletes who are no more than 16 years old on 31 December of the year of the competition (born in 2005 or later).

**M18** - for athletes who are no more than 18 years old on 31 December of the year of the competition (born in 2003 or 2004).

Each country may enter a maximum number of 4 competitors in each class and one relay team per class. All participants must be full passport holding citizens of the country they are representing.

Maximum number of officials per team is not limited.

## COMPETITION RULES

The Competition Rules for IOF Foot Orienteering Events (version valid from 1st January 2020) shall be applied to participation in the European Youth Orienteering Championships 2020, with special attention to Appendix 8.

Competitors representing member Federations of the IOF, defined by the International Olympic Committee as belonging to the European continent, can compete in EYOC. Competitors representing other member Federations of the IOF can participate in EYOC but will not be eligible for European titles, medals or diplomas. The Competition Rules for IOF Foot Orienteering Events (version valid from 1st January 2020) shall be applied to participation in the European Youth Orienteering Championships 2020, with special attention to Appendix 8.

Competitors representing member Federations of the IOF, defined by the International Olympic Committee as belonging to the European continent, can compete in EYOC. Competitors representing other member Federations of the IOF can participate in EYOC but will not be eligible for European titles, medals or diplomas.





## TERRAIN

### LONG

The terrain is moderately to heavily hilly (height difference between the lowest and the highest points amounts to 110 m). Southern part of the terrain consists of steep slopes facing the river Neris with numerous re-entrants and erosion gulleys, northern part is a moraine type terrain abundant with depressions, small hills and medium-sized slopes. There are a few small boulders scattered across the area.

Marshes are scarce and are mostly found along the streams in the river slope, some of them are overgrown with nettles. The area along the streamlet in the western part are affected by beavers, with small dams, ponds and burrowed trees.

The forest has a reduced runnability with portions of dense bushy areas overgrown with hazel and nettles. Moderate network of roads, tracks and rides. Some rides and paths are grass grown and less noticeable.

### RELAY

Competition terrain – Raudondvaris forest. Moderate and large (up to 25 m) slope forms dominate the terrain, with several areas with smaller landforms. Coniferous forest of reduced runnability with various undergrowth, including nettles in some areas. Some open clearings are present in the central part of the forest. Moderate network of forest roads, tracks and rides.

Northeastern side of the competition terrain encompasses ‘Europa Park’ open-air art museum with an intricate network of tracks and many differently sized sculptures and installations, the smallest of which are not mapped.

### SPRINT

The Old Town of Vilnius – one of the few remaining medieval towns in Northern/Eastern Europe - is characterized by asymmetrical street layout with residential and commercial buildings with numerous backyards and narrow passages.

The running surface is mostly paved in tarmac, tiles or cobblestones. There are many passages through or in between the buildings. Small parks and gardens with lawns and scattered trees appear throughout the urbanized areas. The Old Town is situated on a gradually steepening slope which amounts to a altitude difference of 35 meters. The north-eastern part of the competition area is dominated by a public park that is flat, containing numerous footpaths, lawns and scattered trees.



## MAPS

LONG - scale 1:10 000, e=5m, mapmakers – Egidijus Kukenys, Audrius Smilgius

RELAY - scale 1:10 000, e=2,5m, mapmaker – Saulius Kireilis

SPRINT - scale 1:4 000, e=2,5m, mapmaker – Gediminas Trimakas, Edvardas Baleišis

## COURSES

### LONG

Class	Approx. winng time	Approx. lenght
W16	35-40 min	5 km
M16	40-45min	6 km
W18	40-45min	6 km
M18	45-50 min	7 km

### RELAY

Class	Approx. winng time	Approx. lenght
W16	75 min	3.0-3.2 km
M16	90 min	4.3-4.5 km
W18	90 min	4.3-4.5 km
M18	105 min	5.0-5.2 km

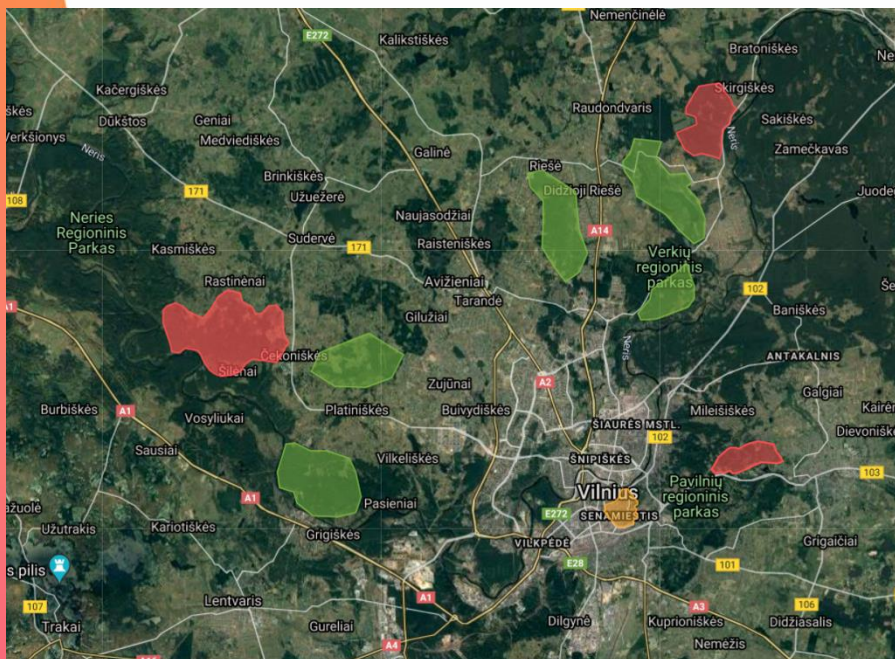
### SPRINT

Class	Approx. winng time	Approx. lenght
W16	10-12 min	2 km
M16	10-12 min	2.3 km
W18	10-12 min	2.8 km
M18	10-12 min	3 km





## EMBORGED AREAS



Embargoed areas for Long Distance and Relay competitions (indicated with **red colour**): competitors, team officials, and other persons, who may influence the results of the competition through their knowledge of the terrain, are not allowed to enter these embargoed areas.

Embargoed area for Sprint Distance (indicated with **orange colour**) are permitted for access for competitors, team officials and other persons but may not be used for orienteering trainings or route choice testing. It is prohibited to operate with a map, to navigate or to test route choices while running or walking in the embargoed area. No orienteering trainings of any kind may take place in the embargoed area until after EYOC 2021. Tightened regulations (full embargo) will be in effect on the competition day, described in detail in Bulletin 3.

**Green line** across the embargoed area marks the road that can be used in order to cross the forbidden area.

Training maps are indicated with **green colour**.



## PUNCHING SYSTEM

SportIdent Air+ punching system will be used in all races. The organiser will provide AIR+ SI cards on request – please indicate upon registering. Rental fee of 10 €/card applies for the duration of the whole EYOC.

## ENTRIES

Preliminary entry – until 1 July 2021. Preliminary entry includes countries' estimated number of competitors in each class and officials.

Payment deadline - until 1 August 2021. After the preliminary entry deadline, all entered Federations will receive an invoice. Information about payment will be further described in Bulletin 2.

Team names deadline – until 9 August 2021. All entries should be submitted in Eventor:  
[www.eventor.orienteering.org](http://www.eventor.orienteering.org)

## ENTRY FEES

Friendship through sport! Single type of accommodation, single fee for each competitor.

Entry package is 170 €/participant

Accommodation details: 1-4 bed hotel rooms with own bathroom.

The latest date to book the official accommodation is 15 July.

Accommodation will be provided in three 3\* hotels that are all within 2-3 km distance:

Urbihop hotel – <http://www.urbihop.lt>

Green hotel – <http://www.greenhotels.lt/lt/pilaite/>

Karolina hotel – <http://www.karolina.lt/>



### **Entry fee includes:**

- Start fee for all three EYOC competitions
- Full board from dinner on 19 August to breakfast on 22 August
- Model events
- Local transport
- Accommodation between 19 - 22 August (3 nights)
- Friendship party

### **According to IOF Competition Rule 7.4.**

1 May to 15 June: surcharge of 20% on new entries, withdrawals receive an 80% refund.  
16 June to 20 June: surcharge of 50% on new entries, withdrawals receive a 50% refund.  
Name changes in this period cost 10 €.

## **TRANSPORTATION**

Organizers provide full transportation during official program of EYOC for accredited athletes and officials (free of charge). Teams are obliged to use organizer's transport for Sprint and Long competitions. However, use own transportation for the Relay and Model events is allowed. Organizers do not provide transportation outside the framework of the official programme, but teams can contact the organizers for additional requests.

## **VISA**

Please check the following link with a list of countries whose citizens require a visa to enter Lithuania/Schengen

Zone: <https://www.renkuosilietuva.lt/en/visas/>



## HEALTH INSURANCE

The Event Organiser will not bear any responsibility related to the cost of medical services for the participants. Each Federation is responsible for the health insurance of all their delegates.

## ANTI-DOPING

Doping is strictly forbidden. IOF Anti-doping rules apply, see – <https://orienteering.sport/iof/anti-doping/>

## PUBLIC EVENT

There will be an officially organized public event (TAKAS 2021) during EYOC 2021 on the same terrains. Website for the event and more information will be available in Bulletin 2.

## TRAINING

- 1st official training camp - May 2021
- 2nd official training camp - July 2021

More info about training possibilities can be find in [www.eyoc2021.lt](http://www.eyoc2021.lt) under 'Trainings'.

**Competition dates can be subject to change due to travel or event restrictions related to COVID-19 outbreak.**





# TAKAS 2021 VILNIUS

## EYOC PUBLIC EVENT

## PROGRAMME

2021 August 20 - middle distance

2021 August 21 - prolonged middle distance

2021 August 22 - city race

## ENTRIES

<https://dbsportas.lt/en/varz>

Entries will be open from 1st February, 2021.

## INFORMATION

[www.oktakas.lt](http://www.oktakas.lt)

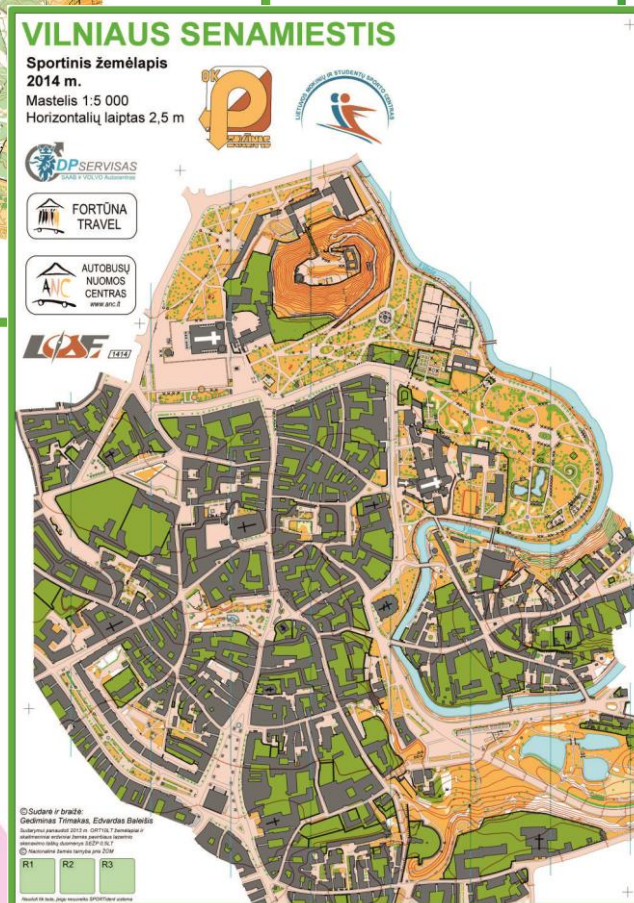
[info@oktakas.lt](mailto:info@oktakas.lt)



LONG

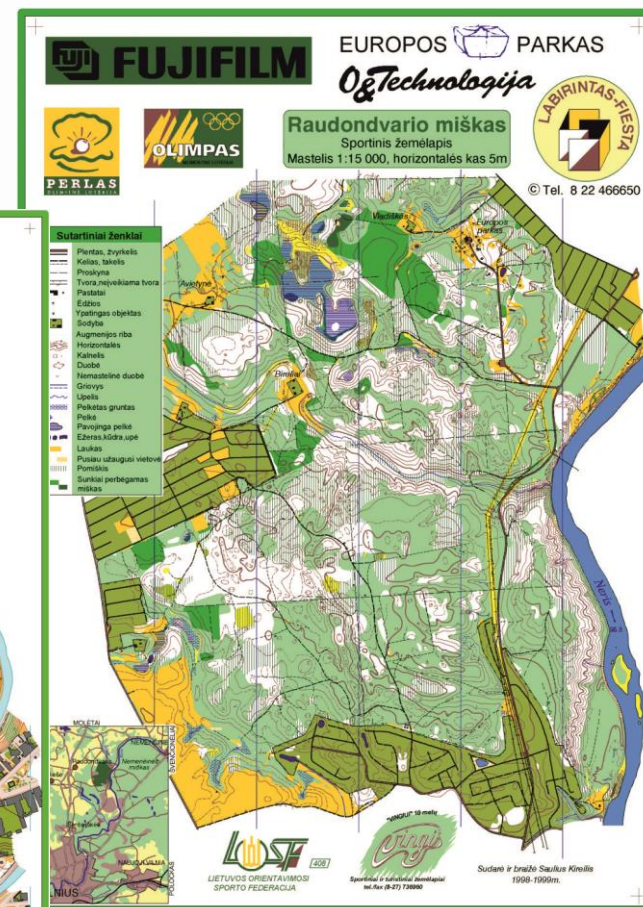


SPRINT



PREVIOUS MAPS

RELAY



European Youth  
Orienteering Championships  
VILNIUS2021

