



European Junior
and Youth
ORIENTEERING
Championships

BULLETIN 2

23-26 October 2020
Salgótarján
HUNGARY



ORGANISERS

Hungarian Orienteering Federation
Salgótarjáni Dornyay SE
Balassagyarmati Balassi Bálint KSE
Nógrád County
City of Salgótarján



ORGANISING COMMITTEE

Event Director

Tibor Sramkó
sramko.tibor@upcmail.hu



Technical Director

Gábor Kovács
gabor01kovacs@t-online.hu

Event Secretary

Róbert Goldmann
grobi@vivaldi.net



EVENT CONTROLLERS

IOF Event Adviser
IOF Assistant Event Adviser
National Controller

Jan Fiala (CZE)
Roman Zbranek (CZE)
Máté Bereczki (HUN)



CONTACTS

eyoc2020.hu
eyoc2020@gmail.com



EVENT DATES

Friday, 23rd October 2020 – Monday, 26th October 2020



EVENT VENUE

The European Junior and Youth Orienteering Championships 2020 will be held in Salgótarján.

Salgótarján is the capital of Nógrád County, in Northern Hungary. It's located at the foot of the Karancs mountain, in the Cserhát hills, 250 meters above sea level, 120 km north-east from Budapest, and 10 km south of the border with Slovakia. Salgótarján is surrounded by beautiful forests and hills topped with castle ruins. The town already existed in the Middle Ages, but information on it is scarce possibly because it was a small settlement. The word *salgó* means "shining" in Old Hungarian, while *Tarján* was the name of one of the Hungarian tribes conquering the area.

Real development came in the mid-19th century, when a coal mine was opened nearby. The job opportunities provided by the mine and the developing industry began to attract people. The village grew quickly and was granted town status in 1922. Today visitors can see the remains of the mining industry by visiting the Mine Museum. In 1950, Salgótarján became the capital of Nógrád county. In the next twenty years, several villages were annexed to the growing city. The coal mines closed years ago. The population is around 34.000 today.

EVENT CENTRE

Salgótarján Sportcentrum, 3100 Salgótarján, Losonci út

48.111730, 19.809037

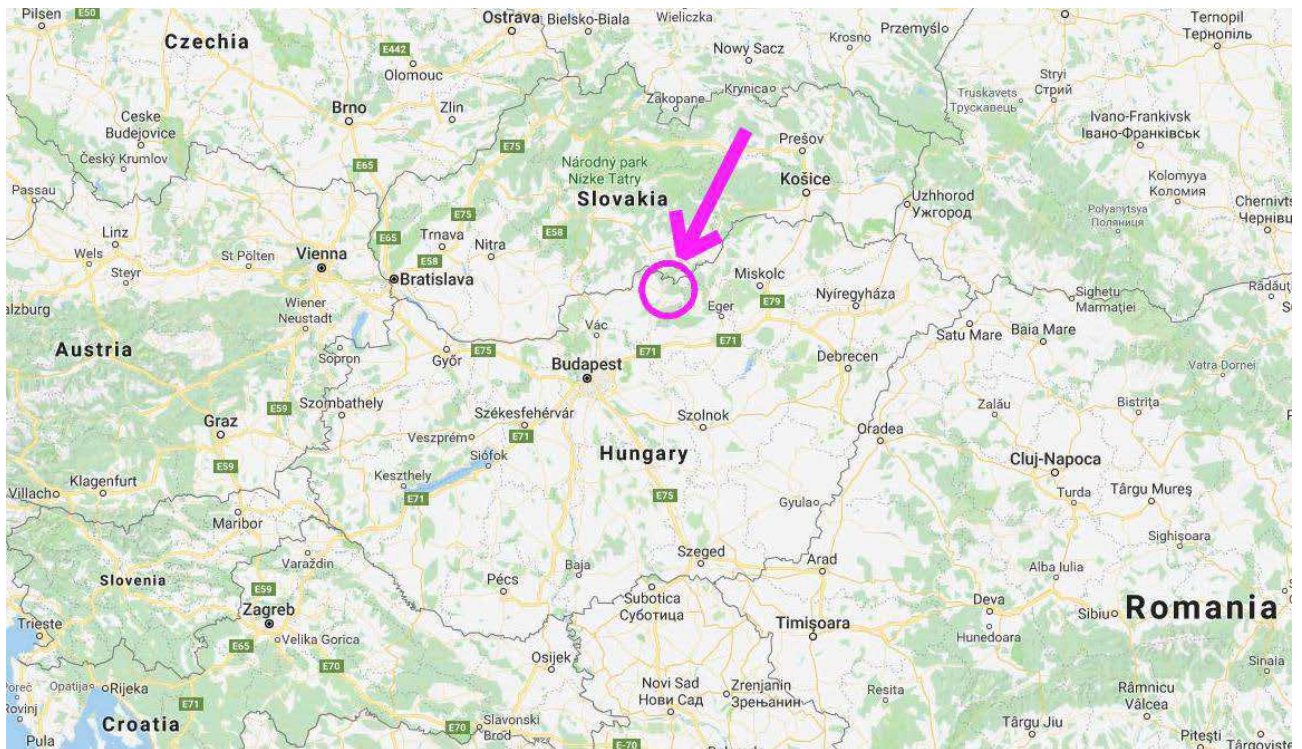
phone: +36 20 392 9812

e-mail: eyoc2020@gmail.com

Accreditation of the teams will be held in the Event Centre.



DISTANCES & GENERAL MAP



Nearest international airports to Salgótarján:

110 km from Budapest, Hungary
180 km from Košice, Slovakia
230 km from Debrecen, Hungary
290 km from Bratislava, Slovakia
320 km from Cracow, Poland
370 km from Vienna, Austria

CLIMATE

At the end of October in the northern part of Hungary it is moderately cold, with the maximal temperature sometimes up to over 20°C and the minimum is usually around 0°C. In an average October there are 7 rainy days, with an average monthly rainfall amount of 37 mm in Salgótarján. Snowfall is rare.



PROGRAMME

22.10.2020 Thursday	14.00-22.00	Arrival, registration
23.10.2020 Friday	10.00-14.00	Arrival, registration
	10.00-16.00	Forest model event
	14.00	Nominal entries to start groups for Long Distance
	14.00-16.00	Sprint and technical model
	19.00-19.30	Team Officials' Meeting (online)
	18.00-20.00	Dinner at the accommodation
24.10.2020 Saturday	6.30-9.00	Breakfast at the accommodation
	10.00-14.00	Long Distance competition (first start at 10.00)
	15.00	Nominal entries to start groups for Sprint
	12.00-14.00	Cold lunch at the arena
	15.00	Opening Ceremony & Prize-giving Ceremony Long
	19.00-19.30	Team Officials' Meeting (online)
	18.00-20.00	Dinner at the accommodation
25.10.2020 Sunday	7.00-9.00	Breakfast at the accommodation
	10.30-12.00	Lunch at the accommodation
	13.00-15.00	Sprint competition (first start at 13.00)
	15.00	Prize-giving Ceremony Sprint
	17.00	Nominal entries and running order for Relay
	19.00-19.30	Team Officials' Meeting (online)
	18.00-20.00	Dinner at the accommodation
26.10.2020 Monday	5.30-8.00	Breakfast at the accommodation
	9.00-13.00	Relay competition (first start at 9.00)
	11.00-12.30	Cold lunch at the arena
	11.30	Prize-giving Ceremony Relay & Closing Ceremony
	13.00	Departure

COMPETITION RULES

The Competition Rules for IOF Foot Orienteering Events (version valid from 1st February 2020) shall be applied to participation in the European Youth Orienteering Championships 2020.

Special Rules for the European Junior and Youth Orienteering Championships 2020 in Salgótarján, Hungary, which is available on IOF Eventor:

<https://eventor.orienteering.org/Events/Show/6799> (see Documents and Links).

Competitors representing member Federations of the IOF, defined by the International Olympic Committee as belonging to the European continent, can compete in EYOC. Competitors representing other member Federations of the IOF can participate in EYOC but will not be eligible for European titles, medals or diplomas.

CLASSES AND RESTRICTIONS

W16	women born 2004 or later
W18	women born 2002 or later
W20	women born 2000 or later
M16	men born 2004 or later
M18	men born 2002 or later
M20	men born 2000 or later

Each country may enter a maximum number of 4 competitors in each class and one relay team/class. All participants must be full passport holding citizens of the country they are representing.

Maximum number of officials per team is not limited.



TERRAINS

LONG



Medium to big hillsides and valleys between 250-480 m asl with a lot of point features (stones, pits, etc.). Some areas with intricate land forms: valleys, re-entrants and spurs. Beech and oak forest, with only a few open areas. Some dense areas with thickets. Runnability and visibility varies between very good and moderate. Medium density of roads and paths. Typical objects of old mining may occur.

Previous map from 2006 and 2009 is part of this bulletin.



SPRINT



Hilly urban terrain between 250-330 m asl: mainly built-up urban areas and parks. Hillsides with varying steepness and terraces. Excellent runnability and visibility. Dense network of roads and paths. Artificial stone walls between the blocks of flats.

Previous map from 2010 is part of this bulletin.



RELAY



Medium hillsides and valleys between 380-500 m asl with a lot of point features (mainly mining objects). Some areas with intricate land forms. Beech and pine forest, mostly with good runnability and visibility. Some open areas and some dense areas with thickets. Dense network of roads and paths.

Previous map from 2010 is part of this bulletin.



MAPS



Long: scale 1:10 000, e=5m, according to ISOM2017-2 – new map



Sprint: scale 1:4 000, e=2.5m, according to ISSprOM 2019 – new map



Relay: scale 1:10 000, e=5m, according to ISOM2017-2 – new map

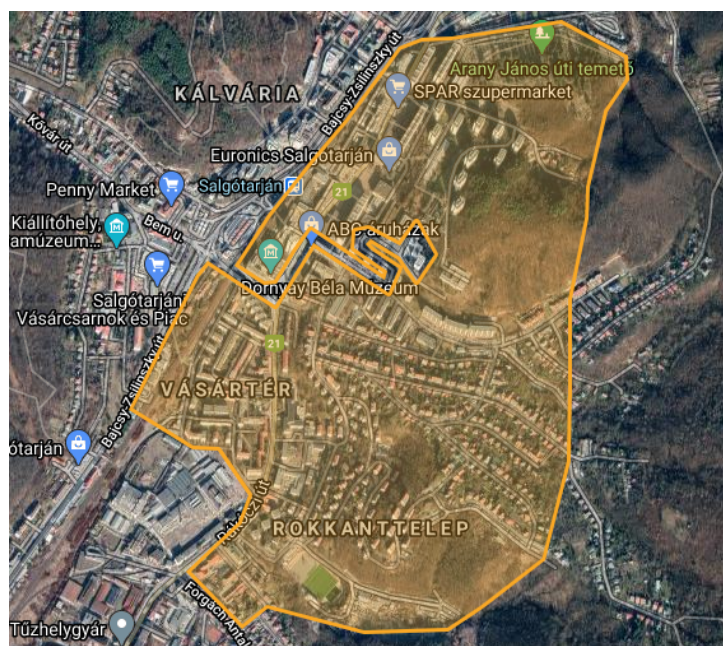
Mapmakers: Nándor Vancsik, Zoltán Dénes

EMBARGOED AREAS




Embargoed area for Long Distance and Relay:



Embargoed area for Sprint:



COURSE DATA

	class		estimated winning time	length (km)	climb (m)	controls	refreshments
 LONG	W16		40 mins	5,5	250	15	2
	W18		45 mins	6,5	350	16	2
	W20		55 mins	7,5	400	17	2
	M16		45 mins	6,5	350	14	2
	M18		50 mins	7,5	400	16	2
	M20		60 mins	9,0	500	19	2
 SPRINT	W16		10 mins	2,1*	30		
	W18		11 mins	2,4*	50		
	W20		12 mins	2,6*	50		
	M16		10 mins	2,3*	35		
	M18		12 mins	3,0*	60		
	M20		12 mins	3,0*	60		
 RELAY	W16	1-2	75 mins	3,1	150	15	1
		3		3,3	190	17	1
	W18	1-2	90 mins	3,8	230	16	1
		3		4,2	260	20	1
	W20	1-2	90 mins	4,0	220	17	1
		3		4,4	250	21	1
	M16	1-2	90 mins	4,0	220	16	1
		3		4,3	235	19	1
	M18	1-2	105 mins	4,8	220	20	1
		3		5,5	300	24	1
	M20	1-2	105 mins	5,0	230	21	1
		3		5,7	320	25	1
	Mix	1-2	75 mins	2,9	130	12	1
		3		3,4	160	14	1

*: IOF Competition Rule 16.3: The course lengths shall be given as the length of the straight line from the start via the controls to the finish deviating for, and only for, physically impassable obstructions (high fences, lakes, impassable cliffs etc.), prohibited areas and marked routes.

PUNCHING SYSTEM

SportIdent Air+ punching system will be used in all races. The use of SIAC cards is mandatory. We recommend that the competitors use their own SIAC cards. The organiser will provide SIAC cards on request – please indicate upon making the entries. Hire costs 10 €/card for the whole EJOOC.

ENTRIES

Preliminary entry deadline:

10th September 2020. Preliminary entry includes countries' estimated number of competitors in each class and total number of team officials.

Payment deadline:

15th September 2020. After the preliminary entry deadline, all entered Federations will receive an invoice with the payment details.

Team names deadline:

13th October 2020.

Payment surcharge:

According to IOF Competition Rule 7.4.

11th September to 13th October: surcharge 20% on new entries and withdrawals receive an 80% refund.

14th October to 20th October: surcharge of 50% on new entries, withdrawals receive a 50% refund. Name changes in this period cost 10 €.

As per IOF Competition Rule 7.9., (If the event (or part of the event) has to be cancelled due to reasons outside of the organiser's control e.g. weather conditions, destruction of terrain, the organiser may retain a minimum proportion of the entry fee in order to cover committed costs.), the organiser will retain 20% of the entry fees from all those entered on 10th September 24:00, if EJYOC 2020 will be cancelled due to COVID-19. Between 14th -20th October, the refund is 50%.

All entries should be submitted through IOF Eventor:

<https://eventor.orienteering.org/Events/Show/6799>

Entries are open from 8th August 2020.

	24th February 10h September	15th September	13th October	20th October	23rd October	26th October
Team Size Entry Periods	Team Size	+20% (80% refund)		+50% (50% ref.)		EVENT
Team Names Entry Periods		Team Names		+10 €		
Payment Schedule		Payment				Pay/Refund changes

ENTRY PACKAGES

- A** 210 €/participant (competitor or team official) in accommodation A
B 180 €/participant (competitor or team official) in accommodation B
C 150 €/participant (competitor or team official) in accommodation C

Extra night with full board for a day (ordered until 10th September)

- A** 50€ / participant/ night
B 35€ / participant/ night
C 20€ / participant/ night
+20% surcharge 11th September to 13th October
+50% surcharge 14th October to 20th October

ACCOMMODATION DETAILS

- A** 1-4 bed hotel rooms with own bathroom
(limited number of places available – first come, first served)
B 4 bed student dormitory rooms with shared bathrooms
C hard floor in gym with own sleeping equipment and shared bathrooms

More details will be published after the Team Size Deadline (10th September)

FOOD

Food service during official programme (except lunch) will be provided at the accommodation places. Lunch will be packed cold lunch provided at the arenas.

We can provide vegetarian food during EJYOC on request. With any special request, please contact eyoc2020@gmail.com

Entry fee includes:

- Start fee for all three EJYOC competitions
- Model events
- Accommodation between 23rd-26th October (3 nights)
- Full board from dinner on 23rd October until lunch on 26th October

Entry fee DOES NOT include:

- Cost of local transport
- Cost of extra nights and extra meals
- Hiring of SIAC (SI Air+) cards

Note:

If a team wants to stay in an accommodation not provided by the organiser (and outside the embargoed areas), they must order and pay for the entry package "C".

TRANSPORT

Teams are recommended to use their own transport throughout the competition, including getting to the start areas. Organisers provide transportation during the official programme of EJYOC only on special request. For costs and details, please contact eyoc2020@gmail.com

VISA

Please check the following link with a list of citizens of countries, who need visa to enter Hungary: <https://konzuliszolgalat.kormany.hu/en>

COVID-19

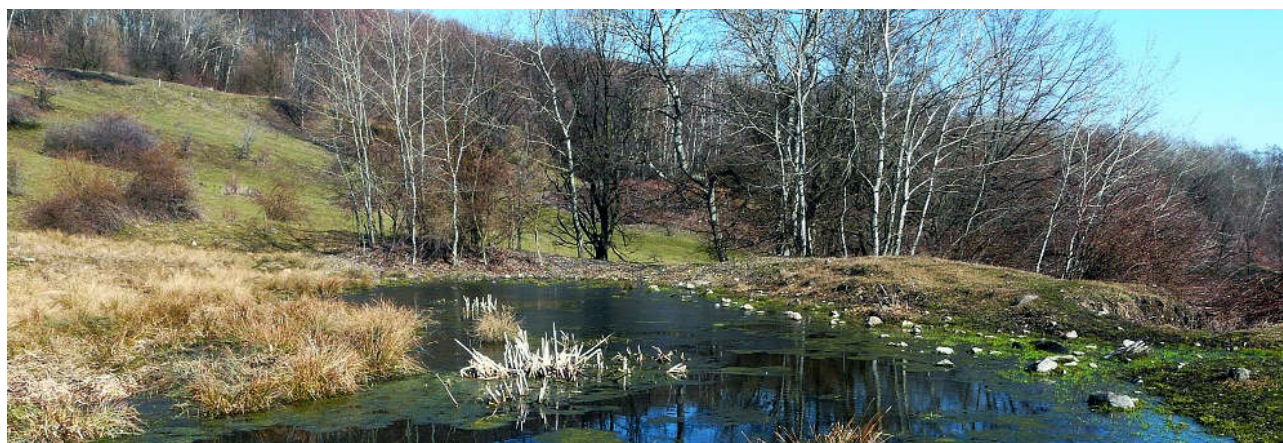
As of today (5th September), the entry condition for those attending a sport event is an **invitation letter** from the local organiser with exact names and ID card data for all participants, team officials and competition officials plus **one negative COVID-19 PCR test not older than 72 hours** (in English or Hungarian language). Those entering with such a negative test will not need to be quarantined in Hungary after entering. According to the current government decree – which is valid until 1st October, for now – spectators can also enter Hungary with one negative COVID-19 PCR test not older than 72 hours. They need a "participation ticket" issued by the organiser and can not stay for more than 72 hours in the country.

To minimise the risk of infection, some previous plans had to be modified, where a lot of people are expected to stay at the same place in the same time. These include:

- Cancellation of the Friendship Party
- No quarantine will be used during the competitions. Special attention will be on fair play for the participants. GPS tracking will either be cancelled or be restricted to the last few (20-25) starters.
- Team Officials' Meetings will be held online, thus competitors can also watch in real time. The presentations will be also available 30 minutes in advance. Questions will only be possible in writing.

As this is a completely new situation, the organiser is open for further suggestions at eyoc2020@gmail.com

A full list of restrictions compared to normal competitions will be available in Bulletin 3.



EMBARGOED AND TRAINING AREAS

Visit our **Google map** to see all embargoed and training areas.

<https://www.google.com/maps/d/edit?mid=1mEeR0YuOwNMGIvaCQJkbMUxgarv9po3H&usp=sharing>



The embargoed area for Sprint – indicated with orange colour – are permitted for access for competitors, team officials and other persons but may not be used for orienteering trainings or route choice testing. It is prohibited to stay there with a map, to orienteer (reconnoitre) through the embargoed area or to test route choices running or walking. No organised orienteering of any kind may take place in these embargoed area until after EJOYC 2020. New regulations (full embargo) will be in effect on the competition day, described in detail in Bulletin 3.

The embargoed area for the Long Distance and the Relay competitions – indicated with red colour: Competitors, team officials, and other persons, who, through knowledge of the terrain may influence the results of the competition, are not allowed to enter these embargoed areas.

Green line through the embargoed area:

It is allowed to cross the forbidden area using this road.



PUBLIC EVENT

In case of appropriate circumstances and sufficient number of participants, a public event (Multinavigátor Salgó Cup) will be organised on the weekend of EJOYC2020 with two middle distance competitions during the weekend.

Invitation of the public event is here:

<https://eventor.orienteering.org/Documents/Event/3877/3/Invitation-of-the-public-event>

Programme	24.10.2020. Saturday	14:30	E1 – mass start middle distance race free order in classes A, B and Br (B short)
	25.10.2020. Sunday	10:00	E2 – 35-minute sprint race

Venues, embargoed areas Both races will be held in the 20 km vicinity of Salgótarján, partly on the embargoed terrains of the EJOYC2020. The exact locations will be given in the Bulletin of the public event, which will be published on 16th October 2020.

HEALTH INSURANCE

The Event Organiser will not bear any responsibility related to the cost of medical services for the participants. Each Federation is responsible for the health insurance of all their delegates.

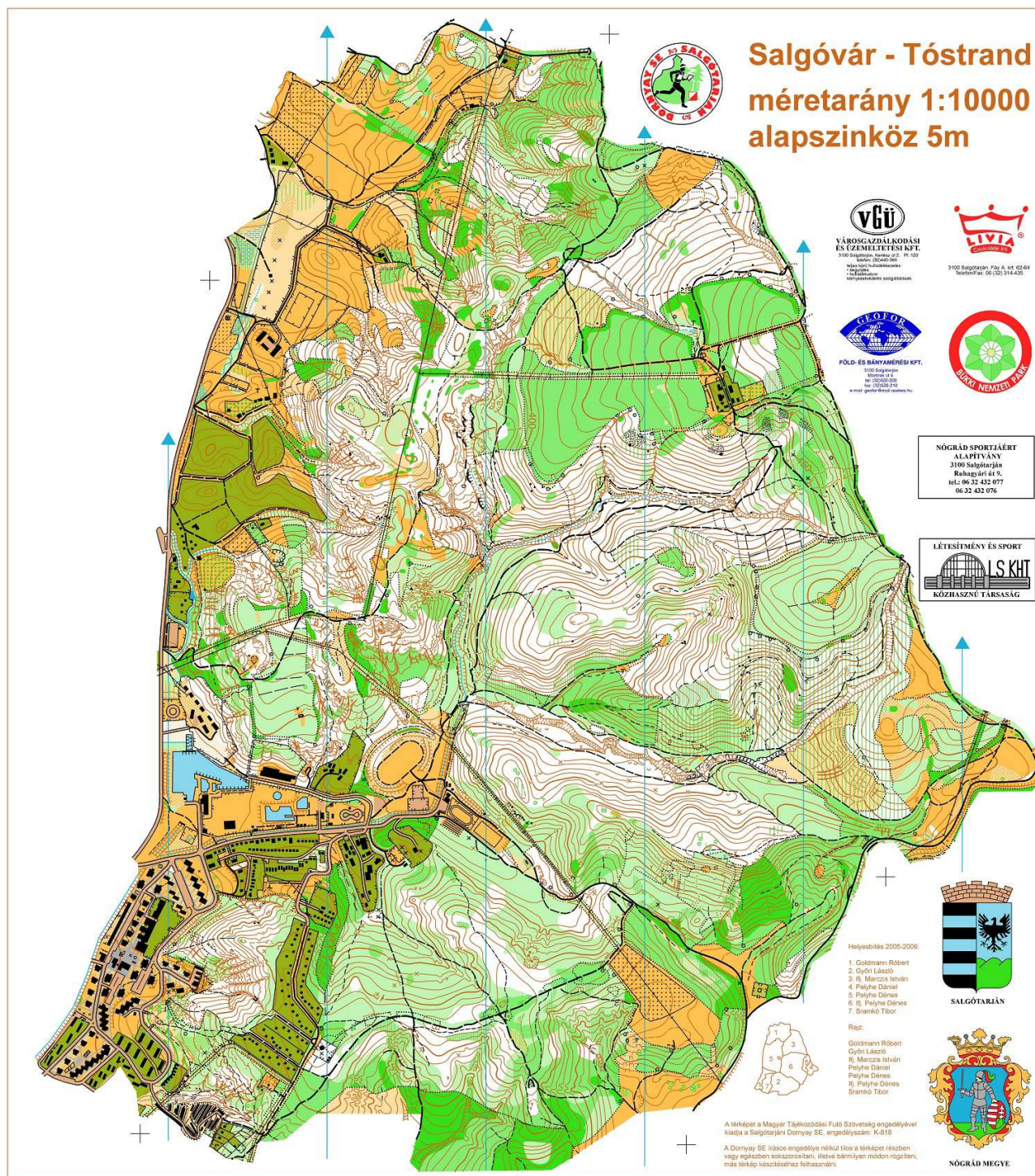
NEXT BULLETIN

Bulletin 3 will be published on 22nd October 2020.

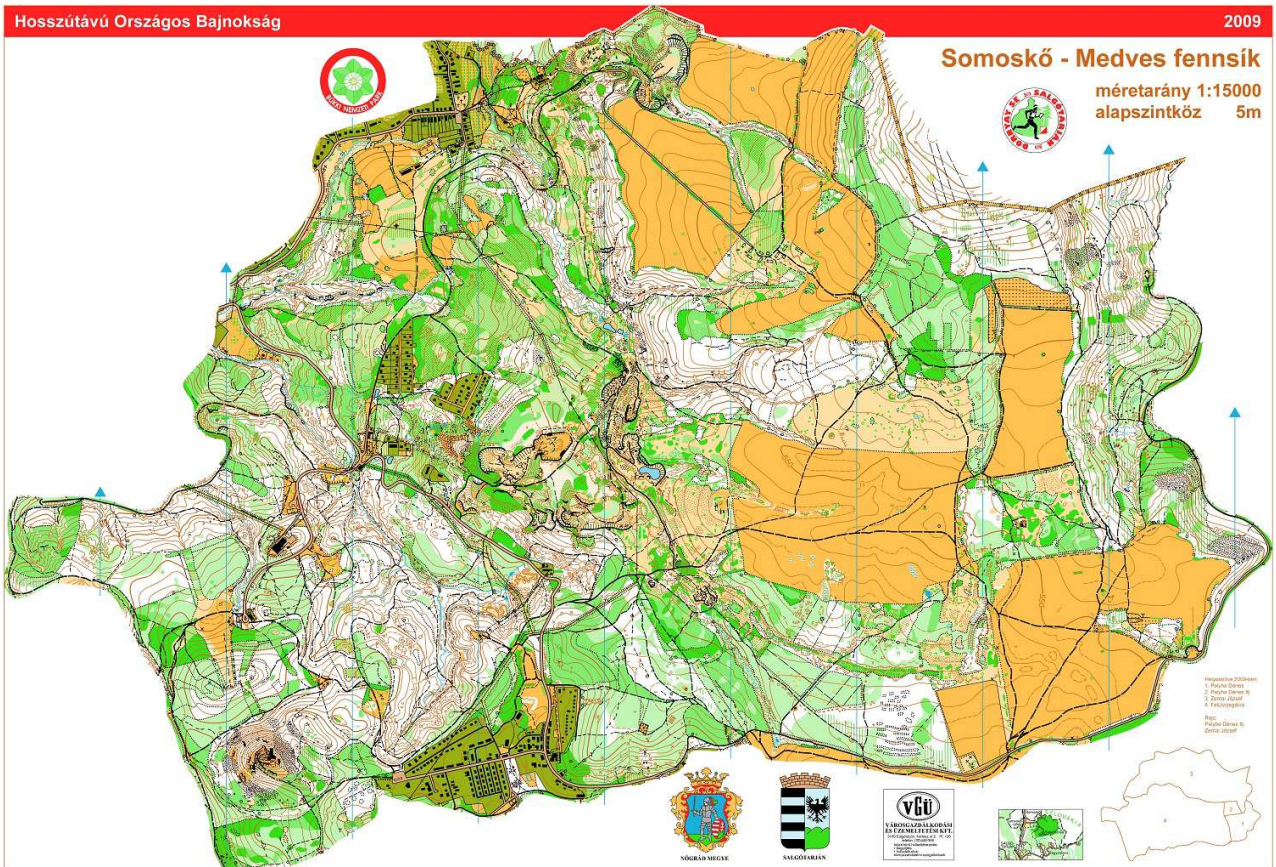
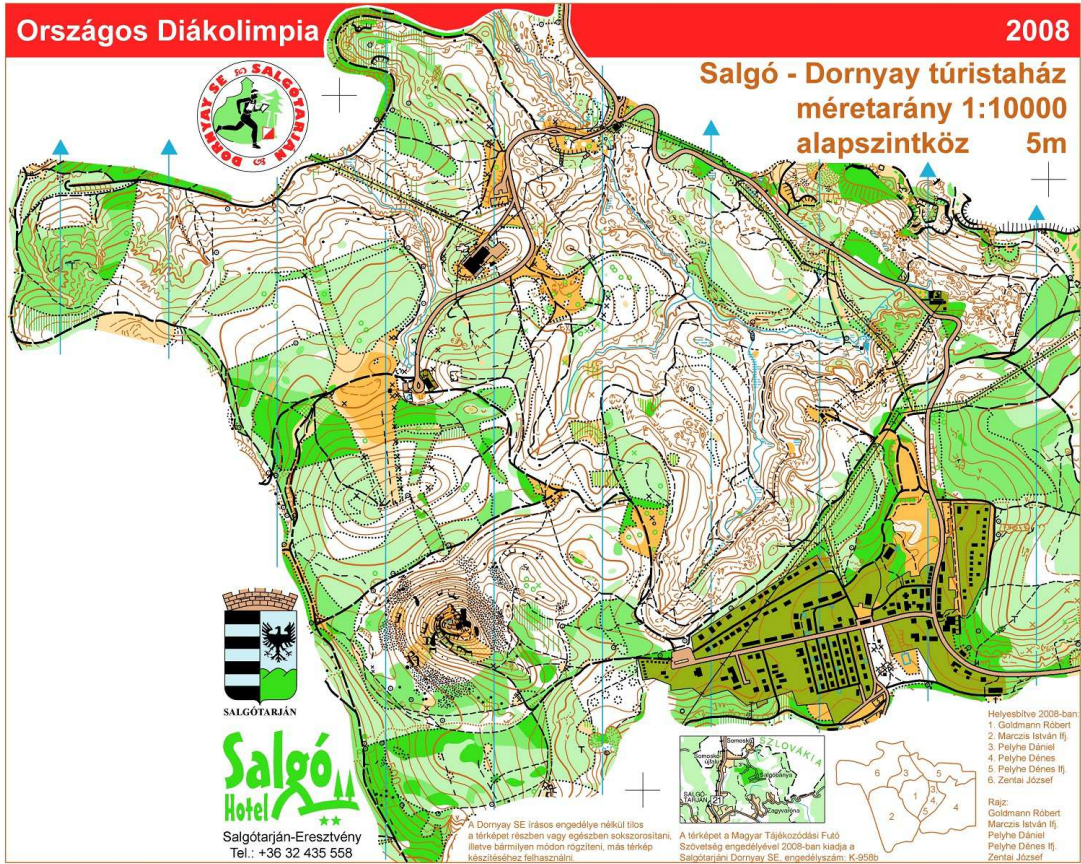


PREVIOUS MAPS OF EMBARGOED AREAS

Long Distance and Relay: Beszermény-Eresztvény

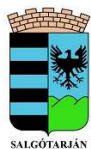


Long Distance and Relay: Beszermény-Eresztvény



Sprint OB 2010

**Salgótarján - Fő tér
méretarány 1:4000
alapszintköz 2,5 m**



SALGÓTARJÁN



Nógrád megye



BUKVI NEMZETI PARK



VÁROSGAZDÁLKODÁSI
ÉS ÜZEMELTETÉSI KFT.
3100 Salgótarján, Kertész ut. 2. Pf. 120
Székhely (Céginformáció)
Nógrád megye
Központi irodák
Központi irodák

NEMZETI CIVIL ALAPPROGRAM
1054 Budapest, Akadémia u. 3.
tel.: +36-1-475-5700

Helyesbítés 2010:
Vancsik Nándor
Rajz:
Gódmann Róbert
Vancsik Nándor

A térképet a Magyar Tájképző és Földrajzi Szövetség engedélyével kiadja a Salgótarjáni Dornyay SE 2010-ben, engedélyszám: K-1087

A Dornyay SE írásos engedélye nélkül tilos a térképet részben vagy egészben sokszorozni, illetve bármilyen módon rögzíteni, más térkép készítéséhez felhasználni.