



**EYOC 2020**  
Salgótarján HUNGARY

European Junior  
and Youth  
**ORIENTEERING**  
Championships

**BULLETIN 1.9**

23 - 26 October 2020  
Salgótarján  
**HUNGARY**



## ORGANISERS

Hungarian Orienteering Federation  
Salgótarjáni Dornyay SE  
Balassagyarmati Balassi Bálint KSE  
Nógrád County  
City of Salgótarján



## ORGANISING COMMITTEE

Event Director	Tibor Sramkó tibor.sramko@eyoc2020.hu
Technical Director	Gábor Kovács gabor.kovacs@eyoc2020.hu
Event Secretary	Róbert Goldmann robert.goldmann@eyoc2020.hu

## EVENT CONTROLLERS

IOF Senior Event Adviser	Jan Fiala (CZE)
IOF SEA Assistant	Roman Zbranek (CZE)
National Controller	Máté Bereczki

## CONTACTS

[eyoc2020.hu](http://eyoc2020.hu)  
[info@eyoc2020.hu](mailto:info@eyoc2020.hu)

## EVENT DATES

Friday, 23rd October 2020 – Monday, 26th October 2020

**In case of appropriate circumstances, the EJYOC2020 will be organised on the dates October 23-26, 2020.**

## EVENT VENUE

The European Junior and Youth Orienteering Championships 2020 will be held in Salgótarján.

Salgótarján is the capital of Nógrád County, in Northern Hungary. It's located at the foot of the Karancs mountain, in the Cserhát hills, 250 meters above sea level, 120 km north-east from Budapest, and 10 km south of the border with Slovakia. Salgótarján is surrounded by beautiful forests and hills topped with castle ruins. The town already existed in the Middle Ages, but information on it is scarce possibly because it was a small settlement. The word *salgó* means “shining” in Old Hungarian, while *Tarján* was the name of one of the Hungarian tribes conquering the area.

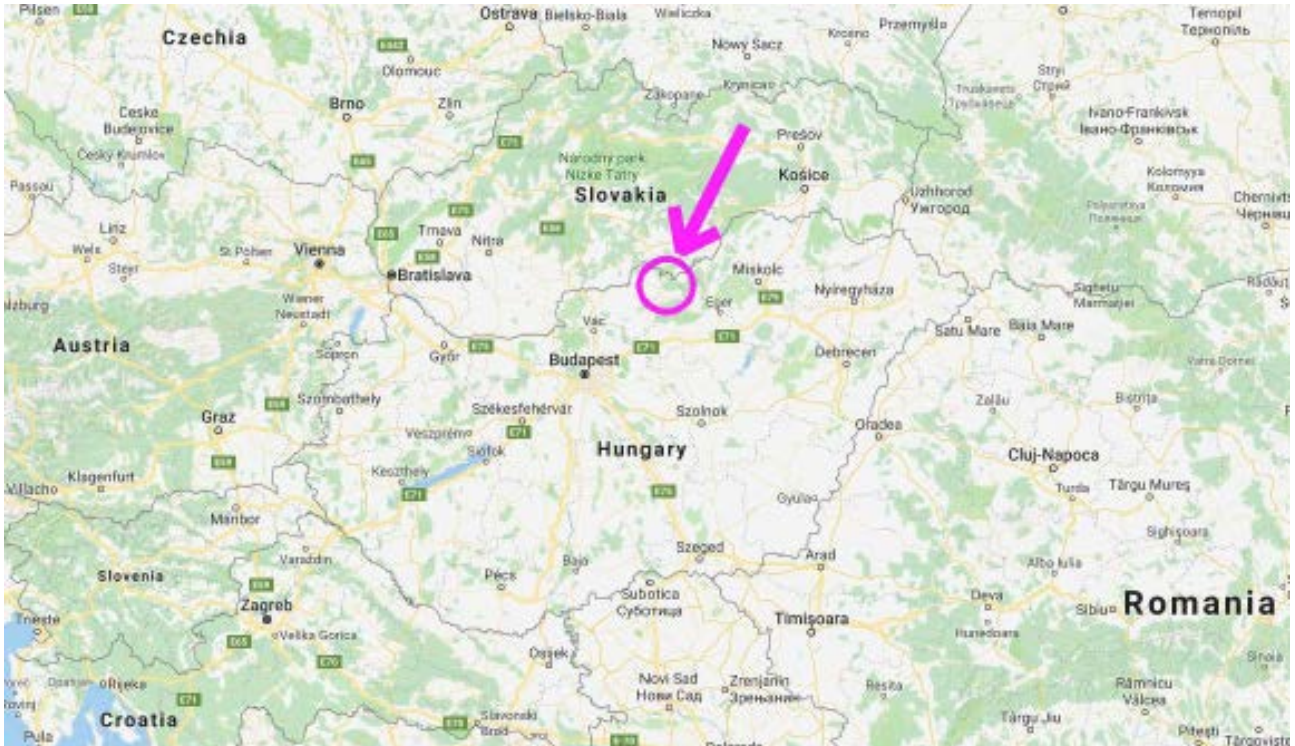
Real development came in the mid-19th century, when a coal mine was opened nearby. The job opportunities provided by the mine and the developing industry began to attract people. The village grew quickly and was granted town status in 1922. Today visitors can see the remains of the mining industry by visiting the Mine Museum. In 1950, Salgótarján became the capital of Nógrád county. In the next twenty years several villages were annexed to the growing city. The coal mines closed years ago. The population is around 34.000 today.

## EVENT CENTRE

Salgótarján Sportcentrum, 3100 Salgótarján, Losonci út  
Accreditation of the teams will be held in the Event Centre.



## DISTANCES & GENERAL MAP



Nearest international airports to Salgótarján:

- 110 km from Budapest, Hungary
- 180 km from Košice, Slovakia
- 230 km from Debrecen, Hungary
- 290 km from Bratislava, Slovakia
- 320 km from Kraków, Poland
- 370 km from Wien, Austria

## CLIMATE

At the end of October in the northern part of Hungary it is moderately cold, with the maximal temperature sometimes up to over 20°C and the minimum is usually around 0°C. In an average October there are 7 rainy days, with an average monthly rainfall amount of 37 mm in Salgótarján. Snowfall is rare.

## PROGRAMME

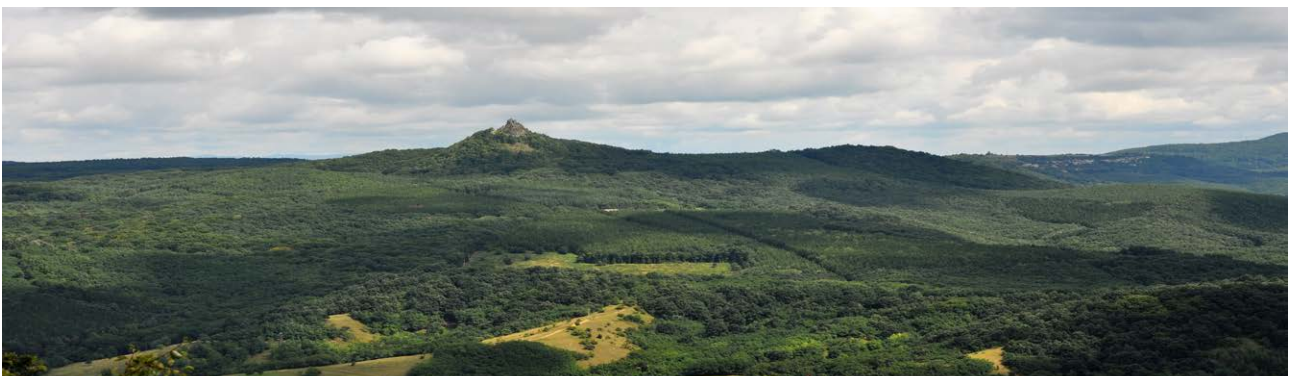
FRIDAY	23rd October	Team arrivals, accreditation, model event, technical model event
SATURDAY	24th October	<b>Long Distance</b> (first start planned: 10:00) Opening Ceremony
SUNDAY	25th October	<b>Sprint</b> (first start planned: 14:00)
MONDAY	26th October	<b>Relay</b> (first start planned: 09:00) Closing Ceremony

## COMPETITION RULES

The Competition Rules for IOF Foot Orienteering Events (version valid from 1st January 2020) shall be applied to participation in the European Youth Orienteering Championships 2020, with special attention to Appendix 8.

Special Rules for the European Junior Orienteering Championships shall be applied to that event, which are supposed to be available from 20th August on the IOF and the event website.

Competitors representing member Federations of the IOF, defined by the International Olympic Committee as belonging to the European continent, can compete in EJOOC. Competitors representing other member Federations of the IOF can participate in EJOOC but will not be eligible for European titles, medals or diplomas.



## CLASSES AND RESTRICTIONS

W16 women born 2004 or later

W18 women born 2002 or later

W20 women born 2000 or later

M16 men born 2004 or later

M18 men born 2002 or later

M20 men born 2000 or later

Each country may enter a maximum number of 4 competitors in each class and one relay team/class. All participants must be full passport holding citizens of the country they are representing.

Maximum number of officials per team is not limited.



## TERRAINS



### LONG

Medium to big hillsides and valleys between 250-480 m asl with a lot of point features (stones, pits, etc.). Some areas with intricate land forms. Some rocky areas in small parts of the terrain. Beech and oak forest, some open areas. Some dense areas with thickets. Runnability and visibility varies between very good and moderate. Medium density of roads and paths. Typical objects of old mining may occur.



### SPRINT

Hilly urban terrain between 250-330 m asl: mainly built up urban areas and parks. Hillsides with varying steepness and terraces. Excellent runnability and visibility. Dense network of roads and paths. Artificial stone walls between the blocks of flats.



### RELAY

Medium hillsides and valleys between 380-500 m asl with a lot of point features (mainly mining objects). Some areas with intricate land forms. Beech and pine forest, mostly with good runnability and visibility. Some open areas and some dense areas with thickets. Dense network of roads and paths.



## MAPS



**Long:** scale 1:10 000, e=5m, according to ISOM2017-2 – new map



**Sprint:** scale 1:4 000, e=2.5m, according to ISSprOM 2019 – new map



**Relay:** scale 1:10 000, e=5m, according to ISOM2017-2 – new map

Mapmakers: Nándor Vancsik, Zoltán Dénes

## PRELIMINARY COURSE DATA



**LONG**

Class	Approx. winning time	Approx. length
W16	35-40 min	5,0 km
W18	40-45 min	6,0 km
W20	50-55 min	7,5 km
M16	40-45 min	6,0 km
M18	45-50 min	7,0 km
M20	60-65 min	9,0 km



**SPRINT**

Class	Approx. winning time	Approx. length
W16	10-12 min	2,0 km
W18	10-12 min	2,3 km
W20	12-15 min	2,8 km
M16	10-12 min	2,8 km
M18	10-12 min	3,0 km
M20	12-15 min	3,5 km



**RELAY**

Class	Approx. winning time	Approx. length
W16	75 min	3,0-3,2 km
W18	90 min	4,3-4,5 km
W20	90 min	4,3-4,5 km
M16	90 min	4,3-4,5 km
M18	105 min	5,0-5,2 km
M20	105 min	5,0-5,2 km

## PUNCHING SYSTEM

SportIdent Air+ punching system will be used in all races. The organiser will provide AIR+ SI cards on request – please indicate upon entering.

Hire costs 10 €/card for the whole EJYOC.



## ENTRIES

### Preliminary entry deadline:

25th August 2020. Preliminary entry includes countries' estimated number of competitors in each class and total number of team officials.

### Payment deadline:

11th September 2020. After the preliminary entry deadline, all entered Federations will receive an invoice.

Information about payment will be further described in Bulletin 2.

### Team names deadline:

13th October 2020.

### Payment surcharge:

#### According to IOF Competition Rule 7.4.

26th August to 13th October: surcharge 20% on new entries and withdrawals receive an 80% refund.

14th October to 20th October: surcharge of 50% on new entries, withdrawals receive a 50% refund. Name changes in this period cost 10 €.

All entries should be submitted through [IOF Eventor](#).

Entries will re-open on 8th August 2020.

	24th February	25th August	11th September	13th October	20th October	23rd October	26th October
Team Size Entry Periods		Team Size	+20% (80% refund)	+50% (50% ref.)			EVENT
Team Names Entry Periods			Team Names	+10 €			
Payment Schedule			Payment				Pay/Refund changes

## ENTRY PACKAGES

- A** 210 €/participant (competitor or team official) in accommodation A
- B** 180 €/participant (competitor or team official) in accommodation B
- C** 150 €/participant (competitor or team official) in accommodation C

## ACCOMODATION DETAILS

- A** 1-4 bed hotel rooms with own bathroom  
(limited number of places available – first come, first served)
- B** 4-8 bed hostel rooms with shared bathrooms
- C** hard floor in gym with own sleeping equipment and shared bathrooms

### Entry fee includes:

- Start fee for all three EJYOC competitions
- Model events
- Accommodation between 23rd - 26th October (3 nights)
- Full board from dinner from 23rd October until lunch on 26th October

### Entry fee DOES NOT include:

- Cost of local transport
- Hiring of SI Air+ cards

### Note:

If a team wants to stay in an accommodation not provided by the organiser (and outside the embargoed areas), they must order and pay for the entry package "C".

## TRANSPORT

Teams are recommended to use their own transport throughout the competition, including getting to the start areas. Organisers provide transportation during the official programme of EYOC on request. For costs and details, please contact **info@eyoc2020.hu** after 1st August 2020.

## VISA

Please check the following link with a list of citizens of countries, who need visa to enter Hungary: <https://konzulizsolgalat.kormany.hu/en>

## COVID-19

The coronavirus situation in Hungary is relatively good at the moment. As of 29th July, Hungary had 4465 people infected, the number of active cases is 530 (source: <http://abouthungary.hu/>). Entering the country from other countries is based upon certain requirements; the countries are divided into 3 groups – as for most EU countries – green, yellow and red, the groups are reviewed weekly. The actual situation is here: <http://hovautazhatok.hu/> It's important, that Hungarian law specifically permits entry to the country, if you are taking part in an international sport event, nobody will be quarantined in Hungary. The requirement for entry is 1 (yellow) or 2 (red) negative PCR tests at the moment. Open travel from green countries.

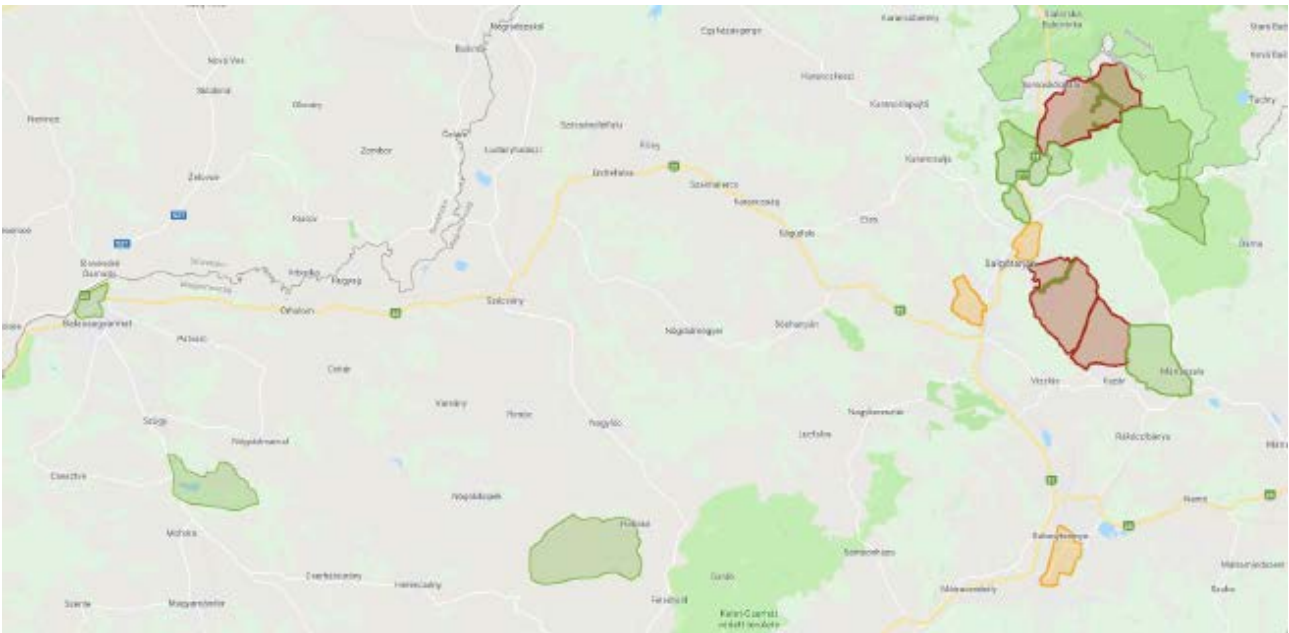
To minimise the risk of infection, some previous plans had to be modified, where a lot of people are expected to stay at the same place in the same time. These include:

- Cancellation of the Friendship Party
- No quarantine will be used during the competitions. Special attention will be on fair play for the participants. GPS tracking will either be cancelled or be restricted to the last few (20-25) starters.
- Team Officials' Meetings will be held online, thus competitors can also watch in real time. The presentations will be also available 30 minutes in advance. Questions will only be possible in writing.

As this is a completely new situation, the organiser is open for further suggestions at **info@eyoc2020.hu** A full list of restrictions compared to normal competitions will be available in Bulletin 3.

## EMBARGOED AND TRAINING AREAS

Visit our [Google map](#) to see all embargoed and training areas.



**The embargoed areas for Sprint** – indicated with orange colour – are permitted for access for competitors, team officials and other persons but may not be used for orienteering trainings or routechoice testing. It is prohibited to stay there with a map, to orienteer (reconnoitre) through the embargoed area or to test route choices running or walking. No organised orienteering of any kind may take place in these embargoed area until after EJOYC 2020. New regulations (full embargo) will be in effect on the competition day, described in detail in Bulletin 3.

**The embargoed areas for the Long Distance and the Relay competitions** – indicated with red colour: Competitors, team officials, and other persons, who, through knowledge of the terrain may influence the results of the competition, are not allowed to enter these embargoed areas.

**Green line through the embargoed area:**

It is allowed to cross the forbidden area using this road.

## TRAININGS

### Training camps:

The organisers will organise two official training camps with a fixed programme in the following periods:

1st training camp: 13th-16th November 2019

2nd training camp: 26th-28th August 2020

The 2nd training camp will be held in case of appropriate circumstances and the sufficient number of participants. [More details are here](#). The programme of the 2nd training camp will be completed the 2-days TIPO Cup on 29th and 30th August (30km from Salgótarján) on partly relevant terrain.

SPORTident punching and timing and big control flags will be used. The organisers also offers accommodation. Further information will be available on the official website ([eyoc2020.hu](http://eyoc2020.hu)) continuously.

Trainings and training camps organised individually must be announced at least two months in advance because the organiser must obtain permissions from the authorities. Please contact [training@eyoc2020.hu](mailto:training@eyoc2020.hu).

It is not possible to organise any training camps in the forest during September, because of the local hunting season. There are a lot of different training maps and terrains within 50 km of the Event Centre in Salgótarján – see the embargoed and training areas [Google Maps](#) link at the start of this section.

### Prices for individual training maps:

Laser printed maps: 4 €/piece

OCAD file: 150 €/map/team for 2019-2020

You can order setting SI controls and timekeeping. It costs 100-200 €/training according to the number of participants.

You can ask for help in organising accommodation and boarding.

Please contact [training@eyoc2020.hu](mailto:training@eyoc2020.hu).

## **PUBLIC EVENT**

In case of appropriate circumstances and sufficient number of participants, a public event (Multinavigátor Salgó Cup) will be organised on the weekend of EJYOC2020 with two middle distance competitions during the weekend. [Invitation of the public event is here](#). More information will be available in Bulletin 2.

## **HEALTH INSURANCE**

The Event Organiser will not bear any responsibility related to the cost of medical services for the participants. Each Federation is responsible for the health insurance of all their delegates.

## **NEXT BULLETINS**

Bulletin 2 will be published until 31st August 2020

Bulletin 3 will be published on 22nd October 2020



Long Distance and Relay: Somlya

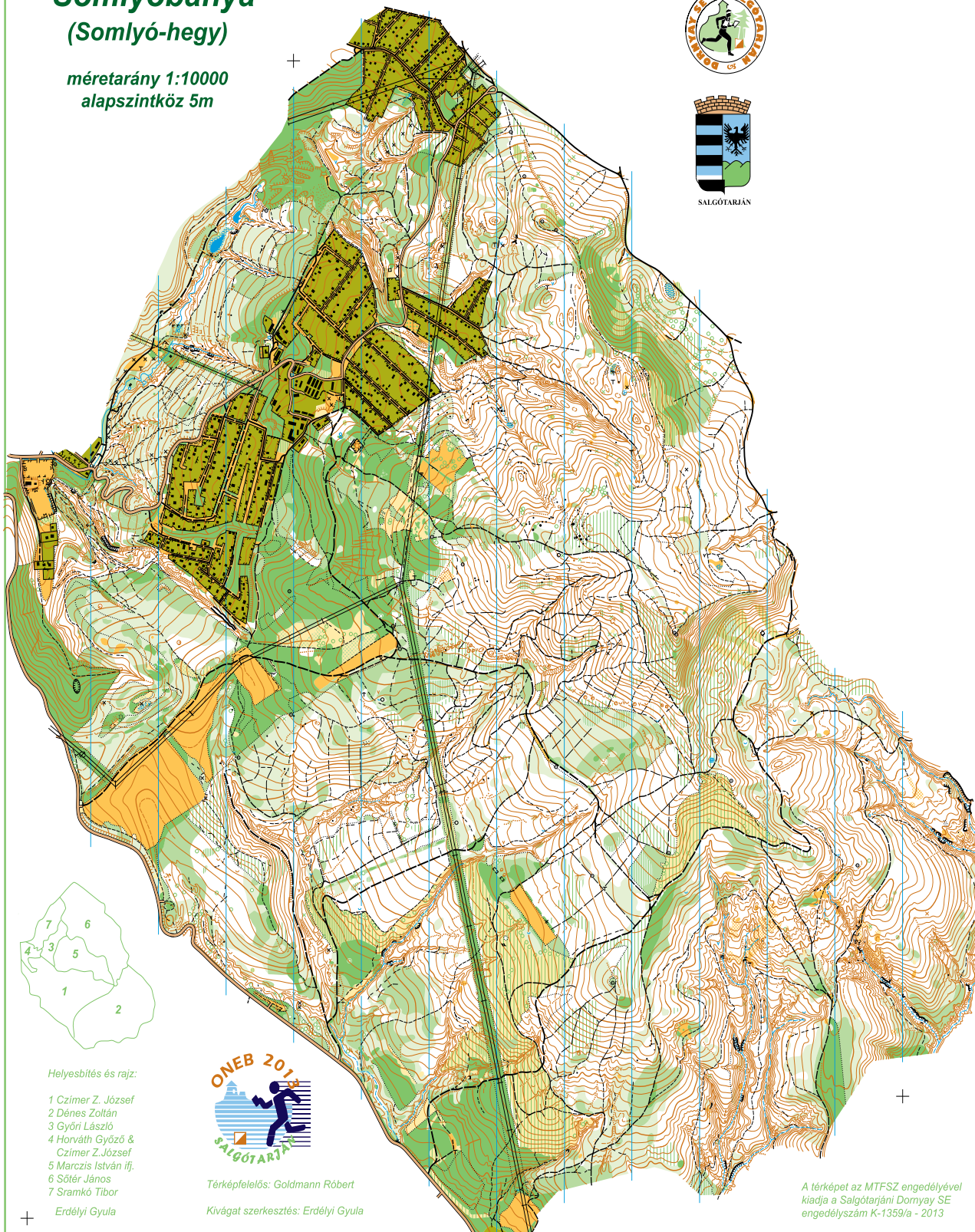
**ORSZÁGOS NORMÁLTÁVÚ BAJNOKSÁG 2013**

**Somlyóbánya  
(Somlyó-hegy)**

méretarány 1:10000  
alapszintköz 5m



SALGÓTÁRJÁN



Helyesbítés és rajz:

- 1 Czimer Z. József
- 2 Dénes Zoltán
- 3 Györi László
- 4 Horváth Győző & Czimer Z. József
- 5 Marczis István ifj.
- 6 Sötér János
- 7 Stramkó Tibor

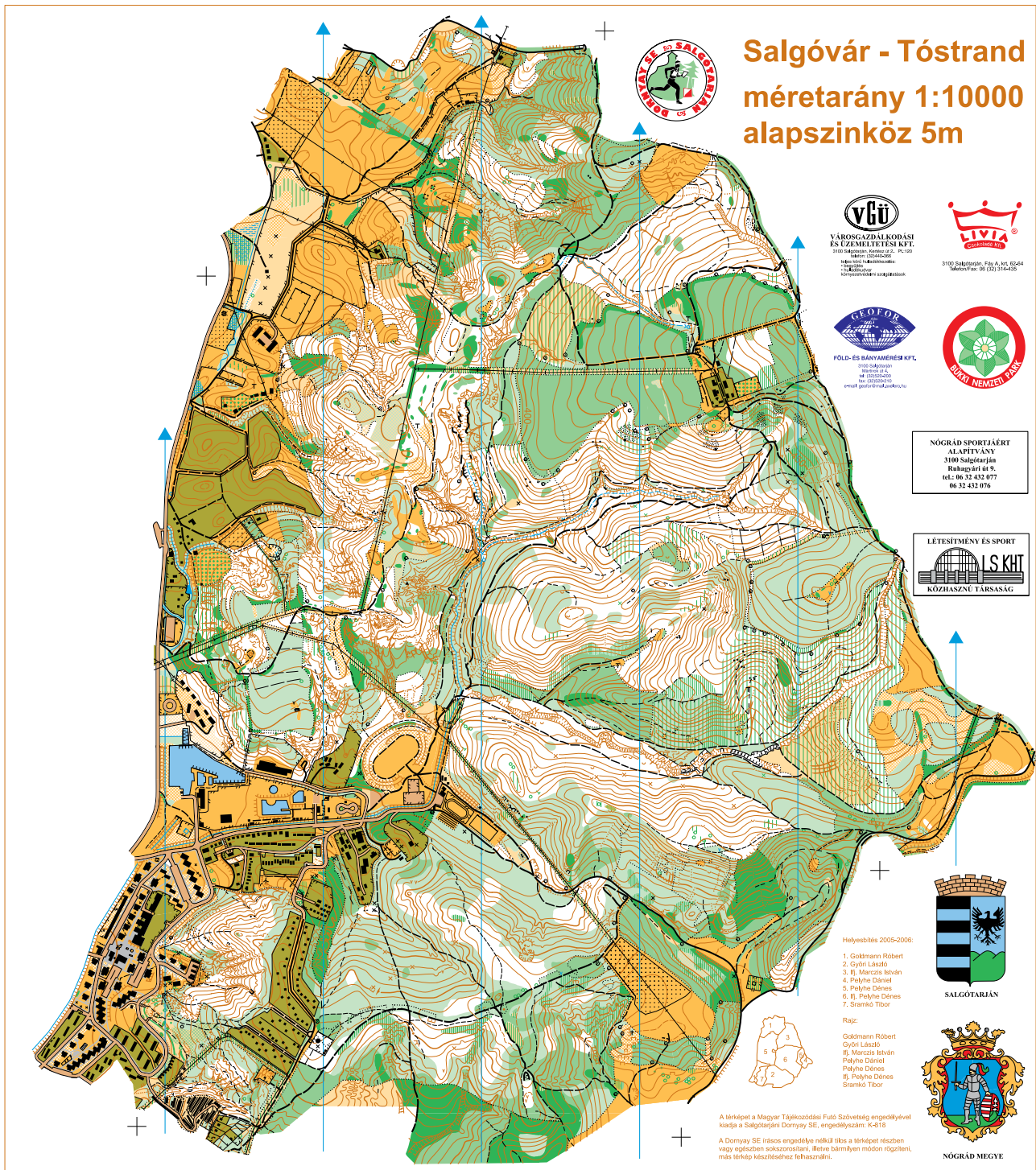
Erdélyi Gyula



Térképfelelős: Goldmann Róbert

Kivágot szerkesztés: Erdélyi Gyula

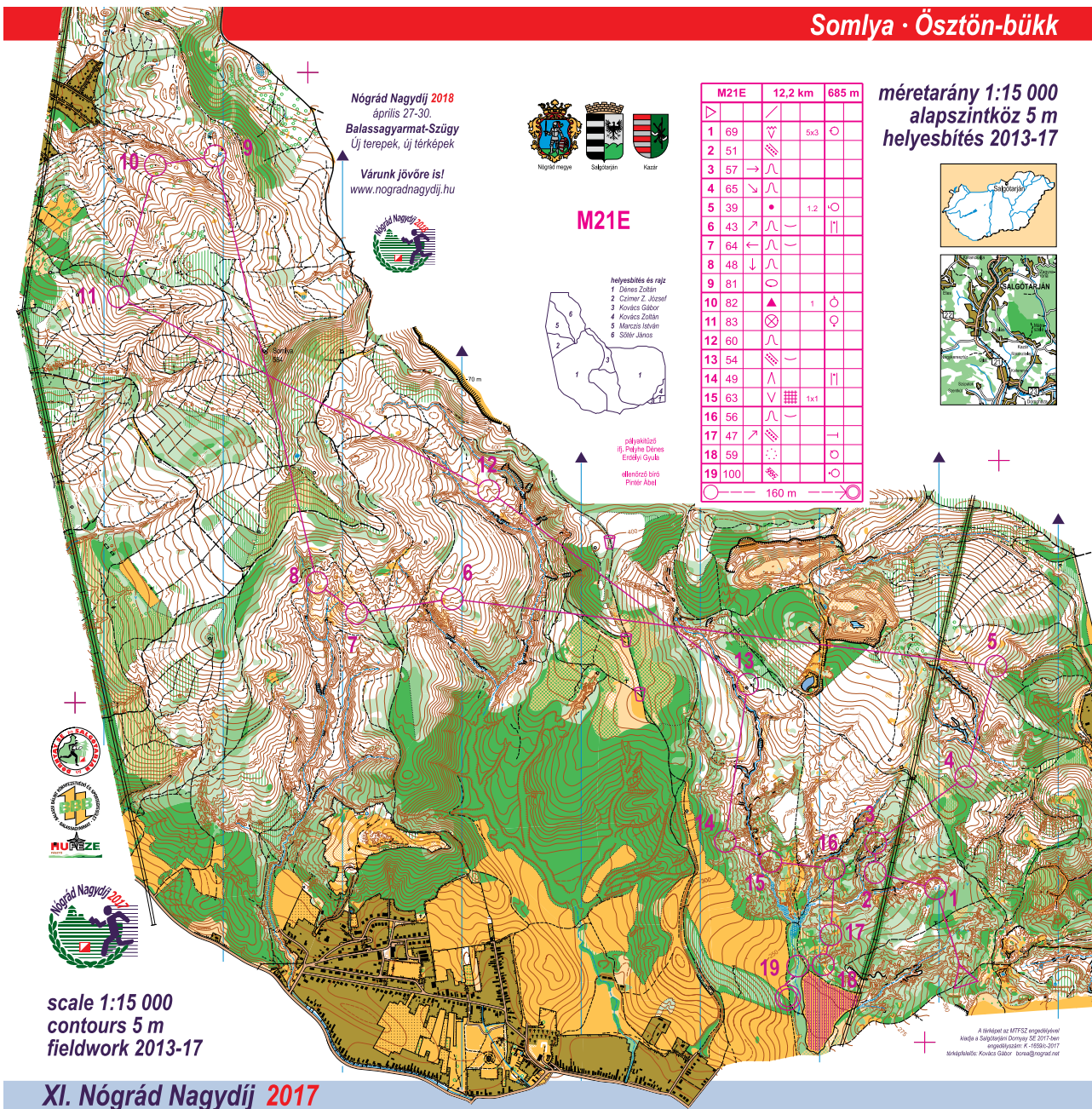
A térképet az MTF SZ engedélyével  
kiadja a Salgótarjáni Dornyay SE  
engedélyszám K-1359/a - 2013







Somlya · Ösztön-bükk



# Nagybátony - Bányaváros

méretarány 1: 4000  
alapszintköz 1 m  
helyesbítés 2014



Nógrád megye

Salgótarján

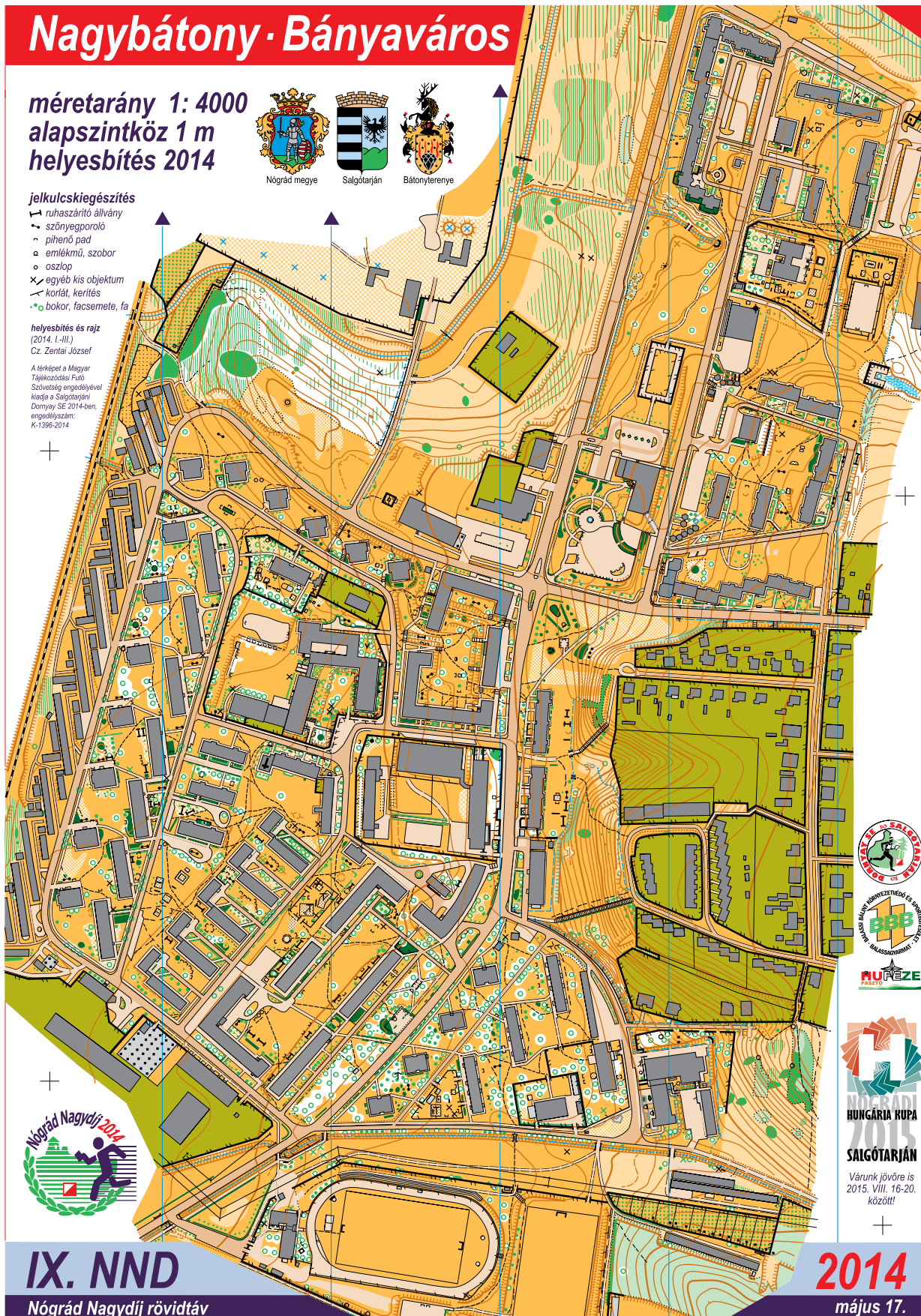
Bányatereny

**jelöltskiegészítés**

- ▲ ruhaszártó állvány
- ▲ szőnyegporoló
- ▲ pihenő pad
- emlékmű, szobor
- oszlop
- ✕ egyéb kis objektum
- ▲ kortár, kerítés
- bokor, facsemete, fa

**helyesbítés és rajz**  
(2014. I.-III.)  
Cz. Zentai József

A térképet a Magyar  
Tájékozódási Futó  
Szövetség engedélyével  
készítette a Salgótarjáni  
Dominy SE 2014-ben,  
engedélyszám:  
K-1396-2014



**IX. NND**

Nógrád Nagydíj rövidtáv

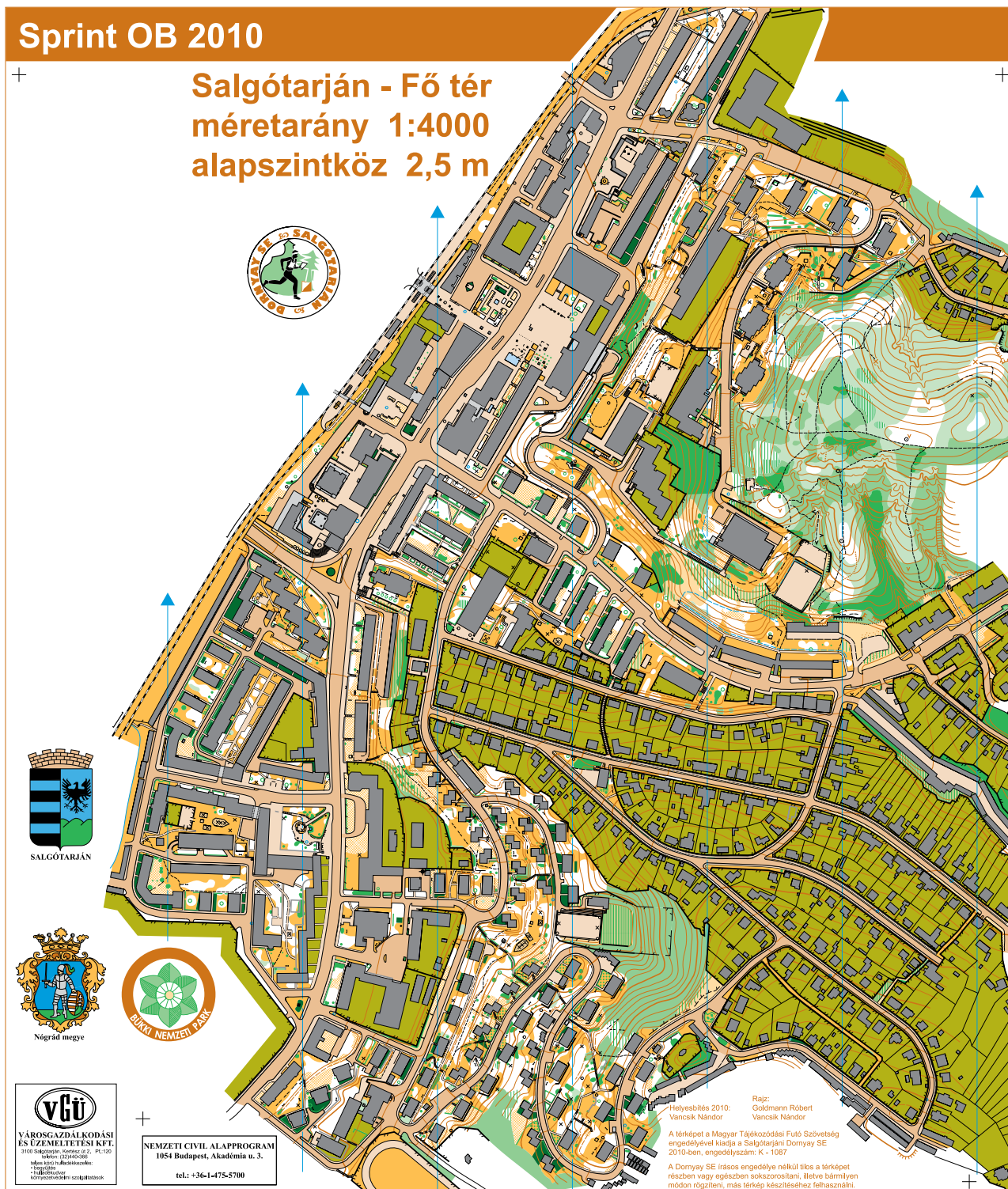
**2014**

május 17.



**SALGÓTARJÁN**

Várunk jövőre is  
2015. VIII. 16-20.  
között!



**Sprint: Salgótarján-Zagyvapálfalva**  
 no previous orienteering map