



World Masters Orienteering Championships 2021 Kansai, Japan BULLETIN 1

Welcome to Japan

Everyone who loves orienteering around the world, we welcome all of you who participate in the World Masters Orienteering Championships in Japan during the early summer of 2021.

Japan is an island country surrounded by the sea. However, there are many mountains and hills, and the land is rich in green nature. By running through with a map and a compass, you can enjoy and get to know the nature of Japan.

There are mountains and seas in Hyogo Prefecture, the venue for the Championships. Sprint races will be held on a hill at the foot of Mt. Rokko overlooking the sea and at an artificial island. On the other hand, Tajima, where forest races are held, is a hilly area rich in nature and undulating.

Japan is a long-lived country in the world. We look forward to seeing orienteering friends competing with each other from 30 years of age to older people.

Please enjoy and compete together in the early summer of 2021.

Tetsuro Yamanishi

Chairperson, Japan Orienteering Association



< Organisers >

International Orienteering Federation (IOF)

Japan Orienteering Association (JOA)

Organising Committee of the World Masters Games 2021 Kansai

< Contacts and information >

World Masters Orienteering Championships 2021

Event Manager: Toshio Onoye

Phone: +81 3 5843 1907

Email: info@wmoc2021.jp

Website: <https://wmoc2021.jp/>

. World Masters Games 2021 Kansai

Phone: +81 6 6258-6574

Email: information@wmg2021.jp

Website: <https://www.wmg2021.jp/>

< Event Advisors >

IOF Senior Event Adviser: Tony Thornley (Great Britain)

IOF SEA Assistant: Takashi Sugiyama (USA)

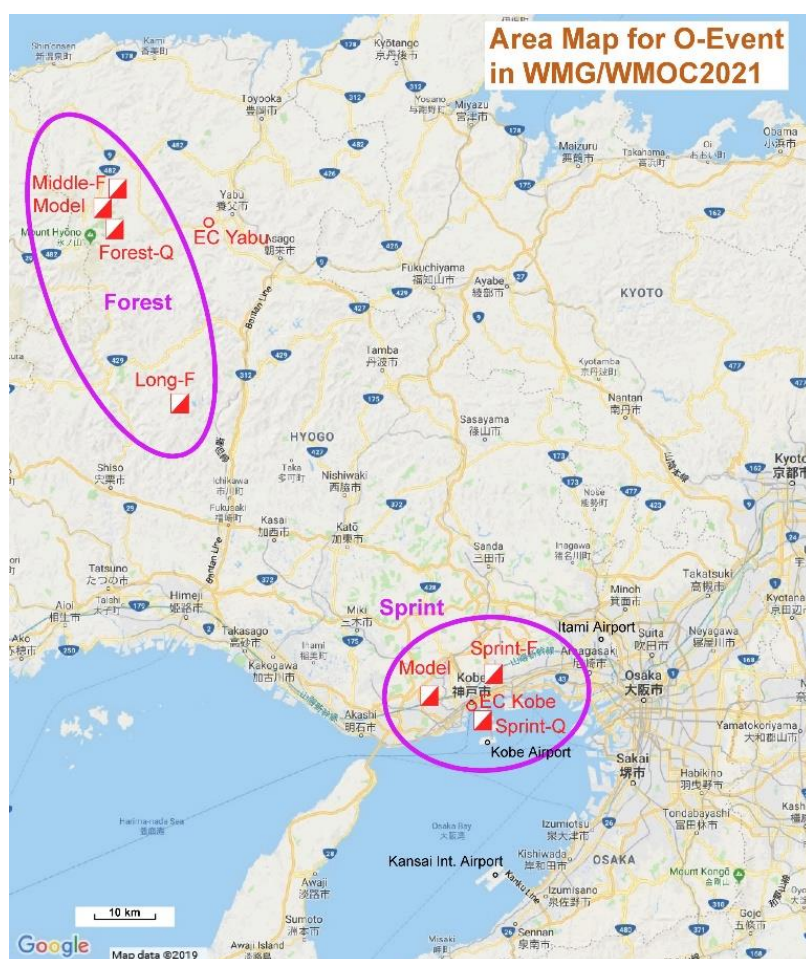
< Controllers >

National Controller: Toru Tanaka (Japan)

National Controller Assistant: Atsushi Onoda (Japan)

.Technical Delegate for the WMG2021 Orienteering competition: Toshio Onoye

< Event Location >



KANSAI JAPAN

The Kansai region is located in the centre of Japanese islands, and is surrounded by the Pacific Ocean, the Seto Inland Sea, and the Sea of Japan.

KOBE

Kobe, a city surrounded by mountains and the sea, has fused Japanese and Western culture into a unique Kobe culture, since the opening of Kobe Port 150 years ago. Special features include Mt. Rokko, Arima-onsen which is one of the Japan's oldest hot springs, a waterfront, and Japanese sake breweries supported by high-quality water. Also, gourmet foods such as Kobe beef and Kobe sweets are waiting for your arrival.

TAJIMA

The Tajima region, where the forest events of WMOC2021 are located, is an area full of natural features such as mountains, rivers, waterfalls and the Sea of Japan. After your race, you can rejuvenate yourself at the hot spring and enjoy local food using seafood, Tajima beef, rice and vegetables cultivated in an environmentally friendly way.

< Event Centre >

The Event Centres will be in Kobe city for the Sprint competition and Yabu city for the forest competition. EC Kobe is easily accessible by public transport and EC Yabu is accessible by shuttle bus and car.

EC Kobe : May20-24, "Duo Kobe", Kobe City,

<https://goo.gl/maps/fa89oLKbx2R2>

EC Yabu : May23-29, Michinoeki (roadside station) "Yoka Tajima-no-kura", Yabu City

<https://goo.gl/maps/7c7M7LYCH252>

< Programme and Key Dates >

Date	Activity	Notes
1 Feb 2020	Registration opens	https://www.wmg2021.jp
28 Feb 2021	WMG registration closes	After this date some WMG activities may not be available.
10 Apr 2021	WMOC entry closes	After WMG entries close, entry for WMOC is available at the same site: https://www.wmg2021.jp . Entry after 10 April will be possible, for an additional fee, if there are vacancies.
20 May 2021	WMOC Event Centre open	
21 May 2021	Sprint model events	
22 May 2021	Sprint Qualification Opening ceremony	
23 May 2021	Sprint Final and medal ceremony	
24 May 2021	Rest day: move to forest area	
25 May 2021	Model event* – Forest Qualification and Middle Distance Final	
26 May 2021	Forest Qualification	
27 May 2021	Middle Distance Final and medal ceremony	
28 May 2021	Model event* – Long Distance Final	
29 May 2021	Long Distance Final and medal ceremony Closing ceremony	

* Forest model event terrain is open from 25 to 28 May. However, the shuttle bus will run only on 25 and 28 May 2021.

< Competitions >

The WMOC Sprint competition consists of a Qualification race and a Final race. The WMOC Forest competitions consist of a Qualification race, a Middle Distance Final race and a Long Distance Final race. Qualifiers for each Final will be determined in accordance with IOF Competition Rules.

Details will be published in Bulletin 2 and on <https://wmoc2021.jp/>

Winning times according to IOF Competition Rules:

Class	SQ and SF	FQ	MF	LF	Class	SQ and SF	FQ	MF	LF	Year of Birth
M35	12-15	50	30-35	70	W35	12-15	40	30-35	55	-1986
M40	12-15	50	30-35	65	W40	12-15	40	30-35	50	-1981
M45	12-15	45	25-30	60	W45	12-15	35	25-30	45	-1976
M50	12-15	45	25-30	55	W50	12-15	35	25-30	45	-1971
M55	12-15	40	25-30	50	W55	12-15	35	25-30	45	-1966
M60	12-15	40	25-30	50	W60	12-15	35	25-30	45	-1961
M65	12-15	40	25-30	50	W65	12-15	35	25-30	45	-1956
M70	12-15	40	25-30	50	W70	12-15	35	25-30	45	-1951
M75	12-15	40	25-30	50	W75	12-15	35	25-30	45	-1946
M80	12-15	40	25-30	50	W80	12-15	35	25-30	45	-1941
M85	12-15	40	25-30	50	W85	12-15	35	25-30	45	-1936
M90	12-15	40	25-30	50	W90	12-15	35	25-30	45	-1931

Legend:

SQ = Sprint Qualification, winning time in minutes

SF = Sprint Final, winning time in minutes

FQ = Forest Qualification, winning time in minutes

MF = Middle Final, winning time in minutes

LF = Long Final, winning time in minutes

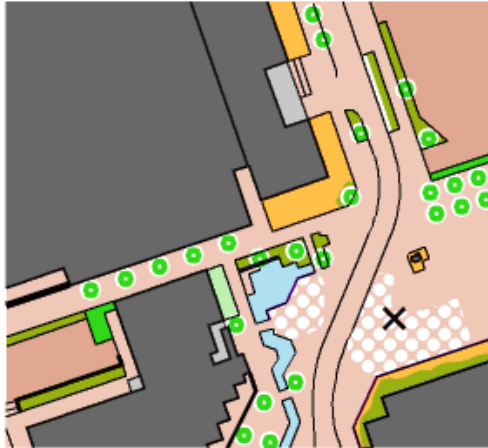
Year of birth = In order to participate, the athlete must be born in the year indicated or

earlier.

Classes for older orienteers will be offered if there are entrants to these classes.

Medals: Will be awarded to the competitors finishing in the top three in each A class final.

< Sprint Qualification > Port Island, Kobe city



Map: ISSprOM 2019 standard, scale 1:4000 or 1:3000, contour interval 2 m. Mapped 2021



Port Island, where the Sprint Qualification Race will be held, was completed in 1981 as the world's largest artificial island at that time. The island includes a wharf port facility, international exchange facilities, commercial and business facilities, educational facilities and residential apartments. Terrain consists of office blocks and an adjacent urban park. The area is flat because of the landfill, but there are some multilevel structures and a pedestrian bridge that crosses the main road.

< Sprint Final > Kobe University Rokkodai Campus, Kobe city



Map: ISSprOM 2019 standard, scale 1:4000 or 1:3000, contour interval 2 m. Remapped 2021



The Sprint Final Race will be held on the campus of Kobe University at the foot of Mt. Rokko. The campus is divided into an area with historical buildings and gardens with scattered trees and bronze statues, and a steep area where there are many buildings in a confined space. As the University is located on the edge of the mountains, there are many slopes and steps. Unlike the qualification area, route choices will need to take height differences into account.

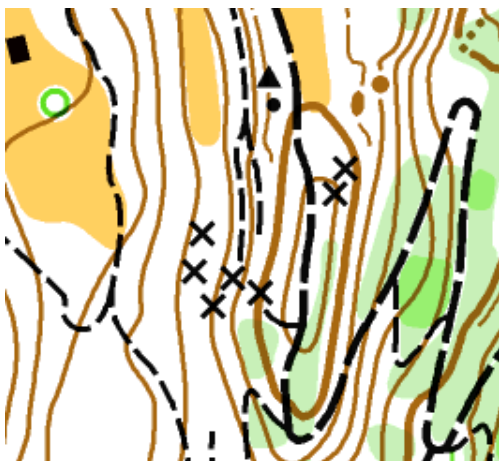
< Forest Qualification > Sugigasawa Kogen, Yabu city



Map: ISOM 2017 standard, scale 1:7500 or 1:10000, contour interval 5 m. Mapped 2021

The forest qualification races will take place on the extensive Sugigasawa Kogen (plateau). This is situated between 750 and 850 metres above sea level. It consists of coniferous and broad-leaved forests, grasslands with some marsh, and extensive cultivated land. In the surrounding area, there are some steep slopes and coniferous forests. The flatter parts of the forest have good visibility and runnability with gentle undulations. However there are fewer features than in the steeper areas. The grassland of "susuki" (Japanese pampas grass) is cut early in the spring and becomes runnable rough open land. In the cultivated land, which is out of bounds to orienteers, the famous radish, "Todoroki-daikon", is grown.

< Middle Distance Final > Uwano Kogen, Kami town

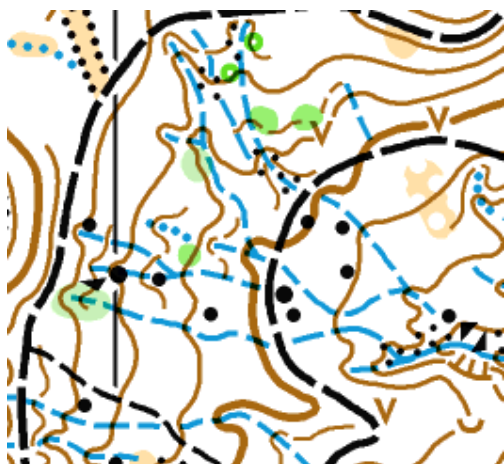


Map: ISOM 2017 standard, scale 1:7500 or 1:10000, contour interval 5 m. Remapped 2021

The Middle Distance Final will be held on the slopes of the Uwano Kogen which lies between 500m and 700m above sea level. The venue, the Uwano Highland Educational Centre, is busy with students throughout the year as it is surrounded by a rich natural learning environment.

The terrain consists of broad-leaved natural forest and coniferous trees with a network of trails and forest roads. Visibility and runnability are mostly good, but in parts visibility is reduced once leaves appear on the trees. In the terrain, there is a Museum for Wood Culture, large grass fields, field athletic facilities and a campsite.

< Long Distance Final > Mineyama Kogen, Kamikawa town



Map: ISOM 2017 standard, scale 1:7500 or 1:10000, contour interval 5 m. Remapped 2021



The Mineyama Kogen is a large plateau in the shape of a basin that is located 900m above sea level and is surrounded by mountains around 1000-1100m.

In the broad-leaved forest zone of oak, there is fine detail including small water courses with marshes and scattered rocky areas. Runnability and visibility are good in most places as much undergrowth and low lying trees have been cleared by deer. A ski area opened in 2017 in the south part of the terrain.

< Embargoed areas and old maps >

Embargoed areas are shown on the website: <https://eventor.orienteering.org/Events/Show/6112>

Old maps of the competition areas are shown on: <https://wmoc2021.jp/en/old-maps>

< Punching System >

The SPORTident punching system will be used. Touch free mode (Air+) will be activated in addition to classic SPORTident punching. Both SI-card and SIAC cards can be used. These SI cards can be rented from the organisers. The rental fee for the entire week is JPY 2,000 for classic SI-Card and JPY 2,500 for SIAC, if booked in advance. Without pre-registration, the rental fee per day is JPY 700 for Si-Card and JPY 800 for SIAC, or JPY 3,000 and JPY 3,500 respectively for the entire week.

< Public Races >

Public races will be offered during WMOC. Further details will be provided in Bulletin 2 and on the website.

< Athlete Registration, Entries and Payment >

Registration, including entries for all WMG2021 and WMOC events, can be done only via the WMG2021 website <https://www.wmg2021.jp/>

All athletes who are going to participate in an IOF Major Event must have an IOF ID. The IOF ID is created by the athlete themselves in the IOF Eventor system. Please see the IOF website for details on how to register for an IOF ID (<https://eventor.orienteering.org/athletes>).

Registration for WMG2021 will commence on 1st February 2020 and close on 28 February 2021.

Entry for orienteering is possible until 10 April 2021. However, some services of WMG2021 may not be available for entries after 28 February 2021.

Entries become valid only after payment of the entry fee.

Payment of entry fees is based on Japanese yen (JPY). As of December 2019, 100.00 JPY is 0.83 EUR.

< Entry fees >

For competitors from overseas

		Fee (JPY)	Notes
WMG competitor fee*		24,000	Compulsory, includes transport pass
Additional fee for orienteering competitors	Sprint	3,000	Compulsory if entering the sprint races
	Forest	3,000	Compulsory if entering the forest races
Standard SI card hire		2,000	Optional – you can use your own SI card. Fees are for the whole week if booked in advance.
Touch free SI card hire (Air+)		2,500	
Late entry after 10 April 2021		3,000	Additional charge
Changes to entry after 10 April		1,000	Handling charge
Parking permit		0	Only available for forest races

* Entrants are allowed to participate in up to five disciplines including orienteering of the WMG competition.

For non-competitors from overseas

		Fee (JPY)	Notes
WMG non-competitor fee**		14,000	Compulsory, including transport pass
Parking permit		0	Only available for forest races

** No WMG fee for children under 12 years old.

Both WMG fees (for competitors and non-competitors) include transportation costs for the competition and transport passes for sightseeing within the Kansai area.

For competitors resident

		Fee (JPY)	Notes
WMG competitor fee*		15,000	Compulsory
Additional fee for orienteering competitors	Sprint	3,000	Compulsory if entering the sprint races
	Forest	3,000	Compulsory if entering the forest races
Standard SI card hire		2,000	Optional – you can use your own SI card. Fees are for the whole week if booked in advance.
Touch free SI card hire (Air+)		2,500	
Late entry after 10 April 2021		3,000	Additional charge
Changes to entry after 10 April		1,000	Handling charge
Parking permit		0	Only available for forest races

* Entrants are allowed to participate in up to five disciplines including orienteering of the WMG competition.

For non-competitors resident

		Fee (JPY)	Notes
WMG non-competitor fee**		5,000	Compulsory
Parking permit		0	Only available for forest races

** No WMG fee for children under 12 years old.

< Changes and late entries >

Changes until 10 April 2021 are free of charge. Afterwards the fee for a change is JPY 1,000.

After 10 April 2021, late entries are possible if vacancies still exist. The extra fee is JPY 3,000.

< Cancellation >

Before 28 February 2021: WMG2021 will refund the balance after a handling charge (5% of paid entry fee) has been deducted.

After 1 March 2021: No refund

< Clothing >

Competitors can make their own choice of clothing and footwear. However, spiked shoes are not allowed for the Sprint Qualification and Sprint Final.

< Antidoping >

IOF Anti-doping rules apply, <https://orienteering.sport/iof/anti-doping/>

< Training Opportunities >

4-6 May 2020 Pre-WMG 3-days event (Sprint at Kobe, Middle distance at Hachi Kogen and Hachikita Kogen)

15-16 May 2021 Pre-event at Fuji, Shizuoka

17-20 May 2021 Training course at Yatsugatake, Yamanashi

Details of these events will be found at WMG2021/WMOC website, <https://wmoc2021.jp/>. Entry is separate from WMG/WMOC2021.

Further training opportunities will be also posted on the websites.

< Accommodation >

Kobe and surrounding area offer a wide variety of accommodation types, including high grade 5-star hotels, budget hotels, B&B, Japanese inn and guest houses.

For the forest events, the host areas Yabu city, Kami town and Kamikawa town offer accommodation. In addition, accommodation in Toyooka city and neighbouring towns is also available. They have a wide range of accommodation including luxury hotels, B & B, Japanese inns, guest houses, cottages, campsites and hard floors with “tatami” mats. In this area you can enjoy traditional Japanese hospitality such as hot springs and local natural foods.

In the Forest area, there is a free shuttle bus which runs from the Yabu Event Centre to JR Yabu Station, competition area, and sub-bases in Yabu City and Kami town. In addition, there will be pick-up and drop-off services from the accommodations in Yabu City and Kami town to the bases of each municipality.

For further information, follow the accommodation link on <https://wmg2021.jp/> or <https://wmoc2021.jp/>

< Food >

Japanese food is varied, including vegetables, meat, and seafood. You can enjoy various cooking methods such as Japanese, Western, and Chinese. There are many dishes that use a lot of vegetables, so it is said to be good for your health.

“Washoku” was designated as a UNESCO Intangible Cultural Heritage in 2013.

< Visas >

For information for visa requirement to visit Japan, please check with the website of the Ministry of Foreign Affairs of Japan: https://www.mofa.go.jp/j_info/visit/visa/

< Transport and Parking >

For the Sprint Qualification and Final there will be no organised transport.

Competitors are advised to use Kobe public transport to get there. Both Sprint Qualification and Final venues are easily and conveniently accessible by public transport.

There will be no designated parking areas for Sprint competitions. Competitors with cars can use public parking areas on Port Island, but there is no public parking around Kobe University.

From Kobe to Tajima, where the forest competitions will be held, you can use a dedicated direct bus for free.

For forest competitions area, there will be shuttle buses connecting the event centre, the competition venues and the main accommodation centres. These shuttle buses are also free.

A limited number of parking places will be offered for forest races. These can be booked when registering.

For further information, please visit the website <https://wmoc2021.jp/> or contact info@wmoc2021.jp.

< Insurance >

Athletes participate in the WMOC at their own risk. Travel insurance is recommended.

< Child care and luggage store >

We can take care of your children and luggage while you are out running. Children must be 3 years or older and nappy free. Enter your requirements at info@wmoc2021.jp.

< Travel to Kobe >

Kansai International Airport is known as the gateway to Japan from overseas and is connected by direct flights from 30 countries. Kobe, located on the north side of Osaka Bay, is very accessible, with a limousine bus about 60 minutes from Kansai International Airport, and also from Tokyo, 2 hours 40 minutes by Shinkansen.

< Climate >

In Japan, the rainy season lasts for about a month from the beginning of June in many regions. The event is held in the pleasant season before that.

Average temperature and rainfall for the last ten days in May over the 8 years is 21.3 degrees Celsius (highest 25.2 / lowest 18.1) and 53.2 mm in Kobe. Those in Toyooka in Tajima are 19.3 degrees Celsius (highest 25.7 / lowest 14.4) and 55.1 mm, respectively.