

ESOC ▣ WCUP ▣ WMSOC



6-12.02.2021

Bulgaria

Chepelare

01

BULLETIN

6-12 February 2021

Chepelare – BULGARIA



WCUP | ESOC | WMSOC

1. ORGANISERS

BULGARIAN ORIENTEERING FEDERATION / OC “NSA-SiVen”
in co-operation with Municipality of Chepelare

Event director	Valentin Garkov
Organizing manager	Todor Pedev
Event secretary	Ilian Todorov
Course setter	Georgi Hadzhimitev

Contact:

E-mail: esoc_wmsoc_2021@abv.bg

Web page: www.esoc-wmsoc2021.bg

Phone: +359 887568353

2. EVENT CONTROLLERS

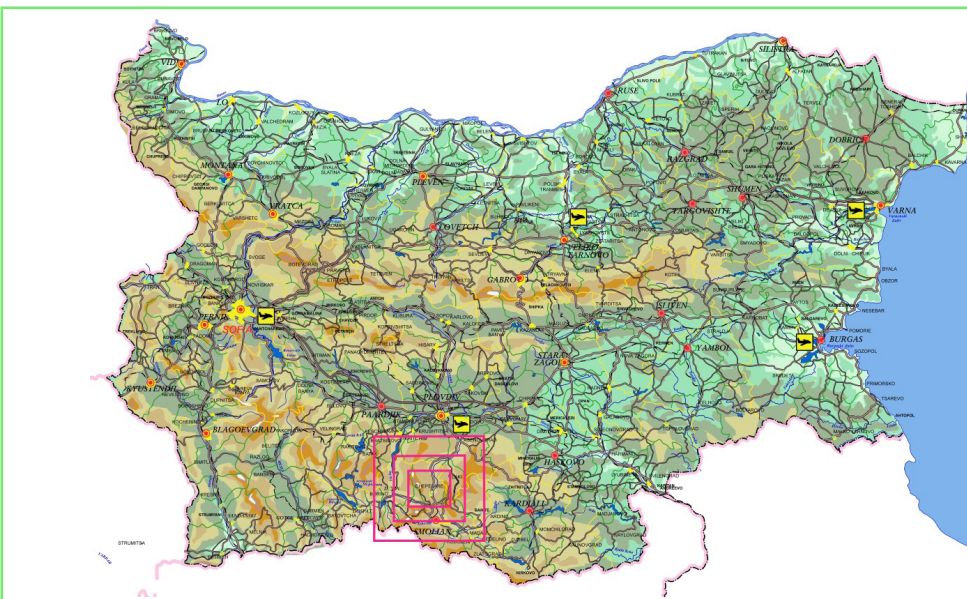
IOF Senior Event Adviser	Per Frost
National Controller	Petar Doganov

3. VENUE

BULGARIA



CHEPELARE



Chepelare is the principal town in Chepelare Municipality, part of Smolyan Province in Southern Bulgaria. It is situated in the central part of the Rhodopes, on the banks of Chepelare River. Chepelare is a popular winter resort with one of the longest ski runs in Southeastern Europe. It is located near Pamporovo, one of the biggest Bulgarian ski resorts.

The town is known for the only ski and snowboard factory in the Balkan Peninsula. The factory cooperates with the ski brand Atomic Skis. Chepelare is also the birthplace of biathlete Ekaterina Dafovska, Bulgaria's only Winter Olympics gold medal winner. The local Sports School provides good conditions for young winter athletes. Chepelare is located 70 km from Plovdiv and 210 km from Sofia.

Coordinates: 41°43'33"N 24°41'4"E

4. PRELIMINARY PROGRAM

DATE	ESOC / WCUP	WMSOC
05.02. Friday	ARRIVAL	
06.02. Saturday	ARRIVAL / MODEL EVENT	ARRIVAL / MODEL EVENT
07.02. Sunday	SPRINT (am)	MODEL EVENT (pm)
08.02. Monday	SPRINT RELAY – only ESOC (am)	SPRINT (pm)
09.02. Tuesday	MIDDLE – mass start (am)	MIDDLE (pm)
10.02. Wednesday	Rest day / Practice / VIP race	Rest day / Practice / VIP race
11.02. Thursday	LONG (am)	LONG (am)
12.02. Friday	RELAY (am) BANQUET	BANQUET
13.02. Saturday	DEPARTURE	DEPARTURE

5. CLASSES AND PARTICIPATION RESTRICTIONS

WCUP (M/W 21)

A federation may enter a maximum of 6 runners in each class in the individual events, and 2 teams in each class in the relay event. Only the best placed team will be counted.

ESOC (M/W 21):

In each individual competition each federation may enter up to 6 men and 6 women

- Mixed sprint relay: max 3 teams
- Relay: max 2 male teams and 2 female teams

The current European champion of the distance shall be given a wild card for the red group in addition to the ordinary entries from his/her federation.

Only competitors representing member federations of the IOF, defined by the International Olympic Committee as belonging to the European continent, can compete in ESOC. Competitors representing other member federations of the IOF are able to participate in ESOC but will not be eligible for European titles, medals or diplomas.

WMSOC (M/W 35, 40, 45, 50, 55, 60, 65, 70, 75, 80, 85, M90):

Open for everybody, the class depends on age.

Long distance: Single race event with random start order.

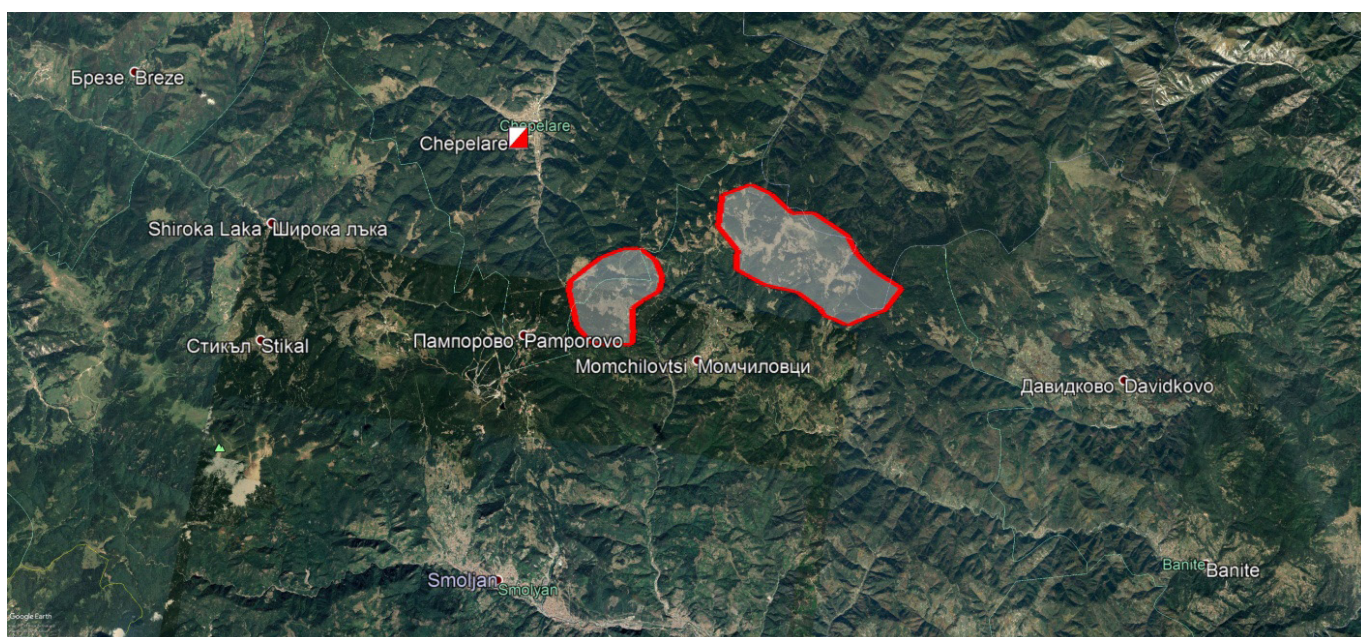
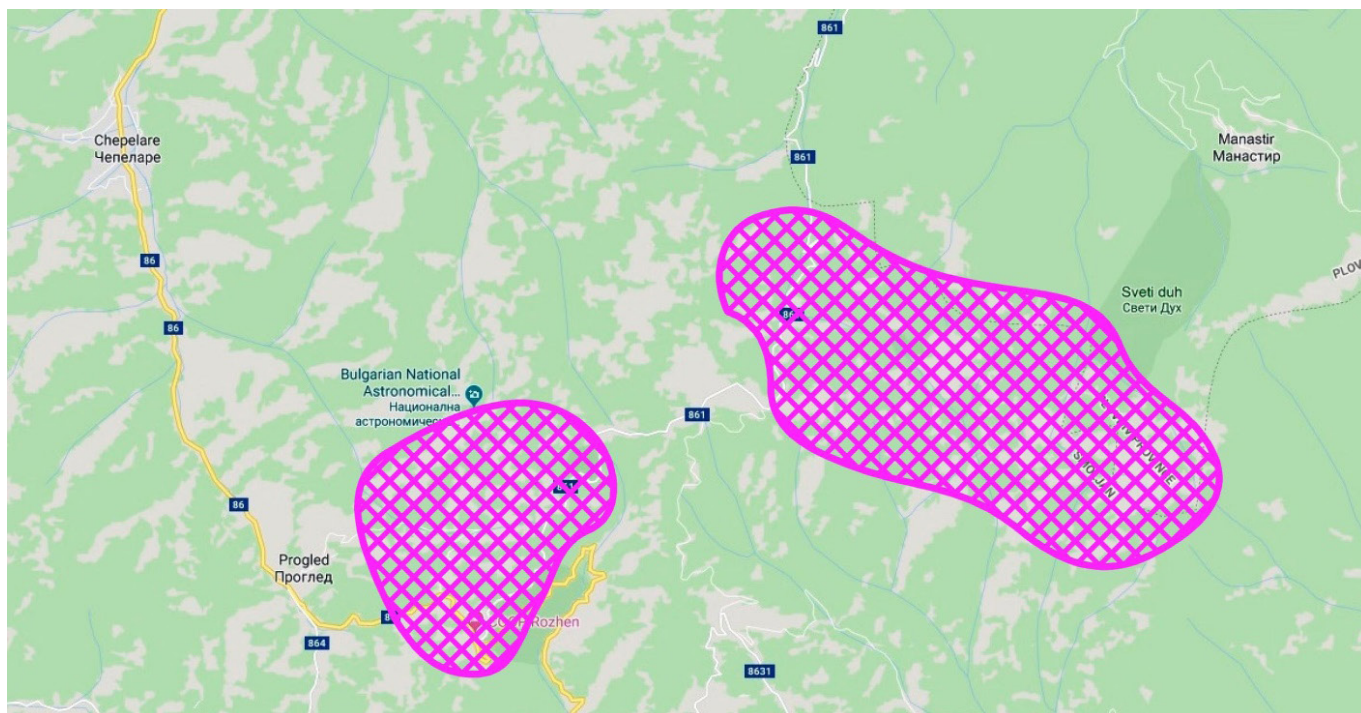
Middle distance: Single race event with random start order.

Sprint distance: Single race event with random start order.

6. OPPORTUNITIES FOR TRAINING

There will be an opportunity to participate in organized trainings (races) in the beginning of February!

7. EMBARGOED AREAS



8. PREVIOUS MAPS OF THE AREAS

(Terrains have never been used for ski orienteering. The maps will be ready in August-September 2020.)

