

BukowaCup

11-13 October 2019

BULLETIN No. 2

**Competition of the Central Calendar (coefficient of Z=1.10)
World Ranking Event In Trail-0**



PATRONAT MEDIALNY



Bukowa Cup VI – 11-13 October 2019 – Szczecin
bno.szczecin.pl

ORGANIZATOR

Klub Orientacji Sportowej BnO Szczecin
Somosierry Street 32c
71-181 Szczecin

CO-ORGANIZERS

Szczecin City Hall
Office of the Marshal of the West Pomeranian Voivodeship
Polish Association of Sports Orientation
West Pomeranian Regional Sports Orientation Union
Student Sports Club Sprint Pełczyce
International Orienteering Federation
Primary School No. 47 in Szczecin
School Complex No. 2 in Szczecin

PARTNERS

Etcetera Advertising Szczecin
Health Expert
Agrotourism Farm "Mała Wenecja"
Fotopoligraf.pl - wedding and studio photography
Decathlon Szczecin
Szczecin Floating Garden
Szczecin is cheering
Gryfino Forest District
Biernat. Refrigeration. Air conditioning. Ventilation
Honey Fujarskich
Lech Free

RANGE AND FORM OF THE COMPETITION

Foot-O: Individual competition, total classification after three stages,
CTZ ranking competitions with a coefficient of $Z = 1.10$,
Trail-O: Individual competitions, separate classification for TempO and PreO, both are
IOF World Ranking Events

ORGANIZING COMMITTEE

Bukowa Cup VI – 11-13 October 2019 – Szczecin
bno.szczecin.pl

Event Director: Bartłomiej Mazan

Main Referee: Hubert Kula

Start Referee: Krzysztof Polec

Finish Referee: Artur Haptar

Speaker: Sławomir Cygler

Map makers:

E1 : Hubert Świerczyński

E2: Wojciech Dwojak, Jacek Morawski

E3: Bartłomiej Mazan, Hubert Świerczyński

PreO and TempO: Wojciech Dwojak

Operator of SportIdent: Joanna Kotkowiak, Hubert Świerczyński

Course Setters:

E1: Mateusz Kula

E2: Bartłomiej Mazan

E3: Bartłomiej Mazan

PreO and TempO: Bartłomiej Mazan, Aleksandra Mazan

IOF Event Adviser (TrailO): John Kewley (GBR)

DATE AND PLACE OF COMPETITION

11.10.2019 (Friday)

CHANGE OF PLACE AND COORDINATES

E1 – Night Sprint – Osiedle Dąbie GPS N53°23.911' E14°40.210'

School Complex No. 2 Szczecin Portowa 21 street

12.10.2019 (Saturday)

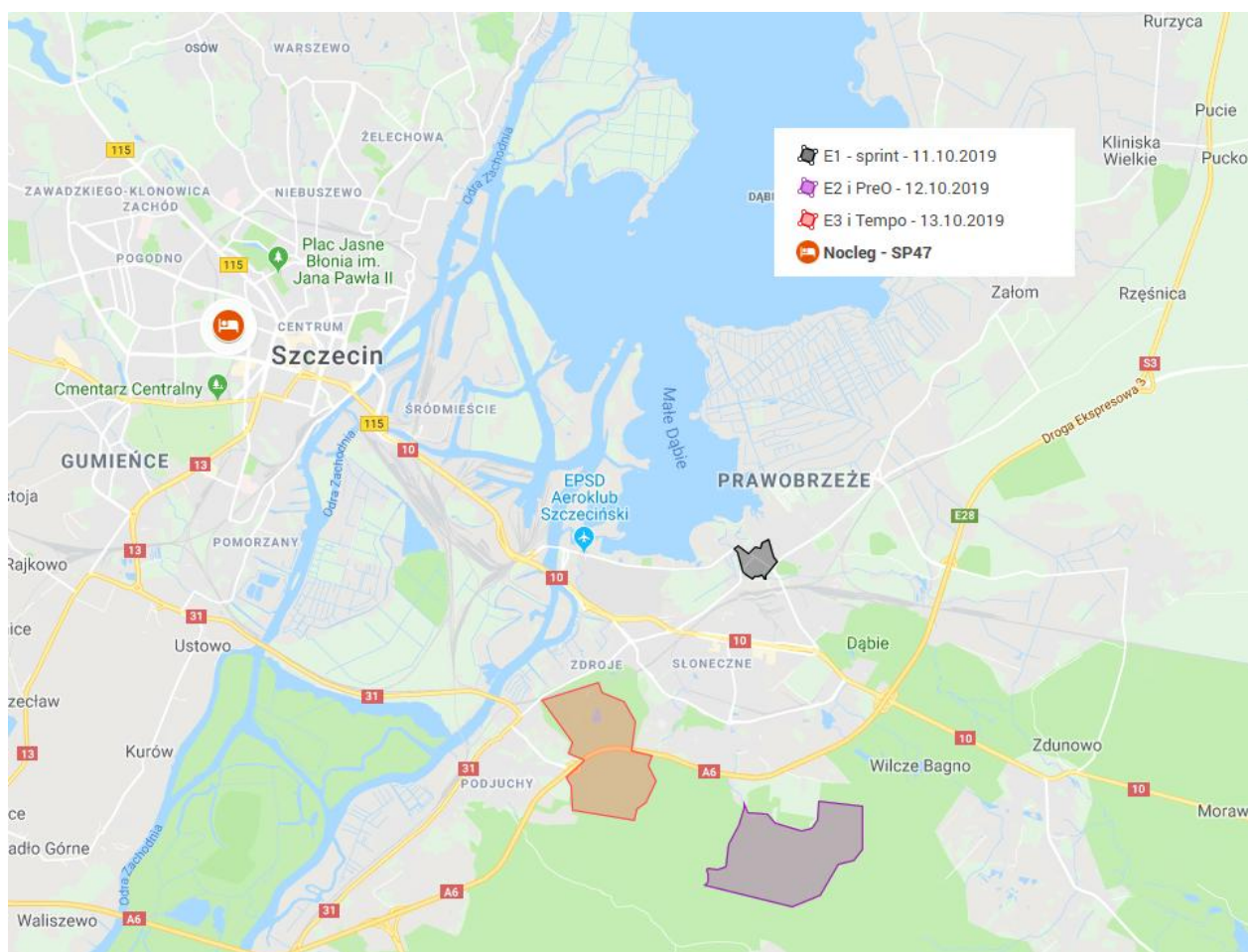
E2 – Shortened long and PreO – Puszcza Bukowa GPS N53°21.335' E14°39.896'

A glade near garden plots at the end of Chłopska / Rodzynekowa street

13.10.2019 (Sunday)

E3 – Middle and TempO – Jezioro Szmaragdowe GPS N53°22.412' E14°37.072'

Former Grota Restaurant at the end of Grabowa Street



PROGRAM ZAWODÓW

11. October (Friday):

5:00 p.m. – opening of the Event Center

7:00 p.m. – E1 sprint

12. October (Saturday):

8:00 a.m. – opening of the Event Center

10:00 a.m. – PreO

12:00 a.m. – E2 long **CHANGE TIME**

13. October (Sunday):

8:00 a.m. – opening of the Event Center

9:00 a.m. – E3 middle

9:30 a.m. – TempO

12:45 p.m. – prize giving Ceremony In Event Center (E3)

CLOTHES

Sprint – no restriction for clothing, shoes must be without spikes

Forest Run – clothing covering the whole body except the head, neck and hands

RACE NUMBERS

All competitors must wear their race number on their front. Race numbers will be available in registration bag.

RULES

Competition will be held under the provisions of Polish Orienteering Association except the TrailO Elite competitions which are under IOF rules.

PUNCHING SYSTEMS

During the FootO competitions, a contactless system for confirming SportIdent AIR + checkpoints will be used.

The PreO competition will use the normal SportIdent system, competitors will confirm the points with chips. Near the decision points there will be carousels with Sport Ident stations.

CONTROL POINTS PROTECTIONS

The control points of the second (E2) and third (E3) competition days were secured against interference by third parties through the sprinkling of confetti and the white-orange marker with the checkpoint code.



MEDICAL CARE

The organizer provides medical care.

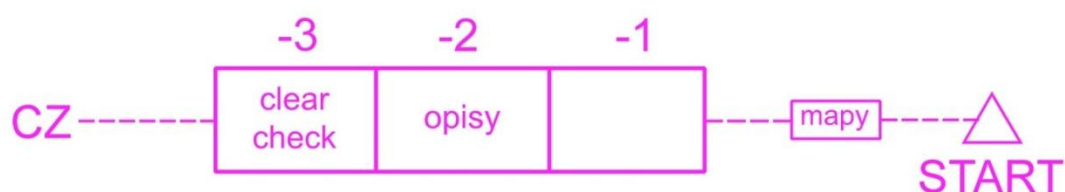
Emergency number: 112

Event Director: 668 009 601

RETIRING FROM THE RACE

Competitors who are forced to stop their race without finishing must inform the Organizers.

FOOTO START PROCEDURE



(Opisy = Control Descriptions; mapy = map)

GPS TRACKING

During the competition there will be GPS tracking for selected competitors.

On the third day the list of competitors who will run with GPS will be determined on the basis of the results after two stages.

List of people with GPS for day 1 and 2.

GPS receivers will be issued to competitors in the first starting box.

M21: Georicke, Fleiss, Galicz, Ptacek, Dobra

M40: Mol, Fiedorowicz, Uhlemann, Kosicki, Gliszczyński

M45: Schmiedeberg, Zschackel, Mikhaylov, Smilgius, Kramski

M50: Wrzesiński, Feldman, Urbaniak, Ptacek, Sterner

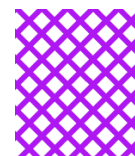
K21: Fell, Wieleba, Durzyńska, Śliwczyńska, Miśkiewicz

K45: Pilarczyk-Pupiec, Zschackel, Gorczyca, Bugaj, Daniluk

Link to follow the competitors: <http://trackcourse.com/index.php?mnu=83>

FORBIDDEN AREA

In the area of the competition on the third day there is the Szmaragdowe Lake, which is surrounded by vertical 110-15m vertical drops. The area has been marked with the 709.0 Out-of-Bounds Area symbol.



ACCOMMODATION

Primary School No. 47

Jagiellońska Street 59, Szczecin

in days 11.10 (evening) - 13.10 (morning)

The cost of accommodation - 15 zł / person / night

The organizer does not provide hardware to sleep.

The school and its belongings should be left until Sunday (13.10) by 9:00

LUNCH

Due to low interest in lunches on Sunday, we had to cancel the order. During E2 and E3 a well-stocked buffet will be set up in the competition center.

AWARDS

The organizer provides diplomas, medals and gifts for places 1-3. In categories up to KM-14 for places 1-6.

T-SHIRT

In the Competition Center you will be able to buy an official Bukowa Cup t-shirt - cost PLN 110 / item



Bukowa Cup VI – 11-13 October 2019 – Szczecin
bno.szczecin.pl

COURSE PARAMETERS

Category	First Day		Second Day			Third Day		
	Length [km]	CP	Length [km]	Climb [m]	CP	Length [km]	Climb [m]	CP
K10N	0.9	6	2.7	75	6	2.0	70	5
K10	0.9	10	2.0	90	6	1.8	70	8
K12	1.5	14	2.7	125	9	2.7	100	12
K14	2.1	18	3.1	135	11	3.0	110	14
K16	2.3	19	5.0	150	15	3.5	150	14
K21	3.3	28	7.9	300	27	5.0	210	18
K35	2.9	24	4.4	200	14	3.6	150	15
K40	2.8	22	4.4	200	14	3.6	150	15
K45	2.8	22	4.4	200	14	3.6	150	15
K50	2.2	17	3.5	125	9	2.8	120	14
K55	1.6	17	3.5	125	9	2.8	120	14
K75	1.3	12	2.8	115	10	1.8	65	8
M10N	0.9	6	2.7	75	6	2.0	70	5
M10	1.2	12	2.4	110	8	1.8	70	8
M12	1.2	14	2.8	115	9	2.9	100	12
M14	2.0	17	4.0	180	14	3.6	110	17
M16	3.0	23	6.7	250	21	3.9	140	17
M18	3.0	23	6.7	250	21	3.9	140	17
M20	3.6	28	10.4	480	34	6.2	240	27
M21	3.6	28	10.4	480	34	6.2	240	27
M35	3.4	26	7.9	275	23	4.4	165	19
M40	3.0	26	7.1	275	24	4.0	160	17
M45	3.0	26	6.4	250	22	3.8	150	16
M50	2.6	24	5.4	220	19	3.5	150	16
M55	2.6	24	4.5	210	17	3.1	140	17
M60	2.3	18	4.0	200	12	2.8	140	17
M65	2.0	17	3.4	160	14	2.6	135	14
M70	1.4	15	3.1	150	12	2.2	100	11
M75	1.3	15	3.1	150	12	2.2	75	11
M80	0.9	10	2.3	100	6	1.8	60	8
Krótki	1.0	12	2.1	125	8	1.8	60	8
Średnia	1.9	18	4.2	165	15	2.6	100	14
Długa	3.4	27	6.2	210	19	4.4	140	19
Rodzinna	0.9	13	1.4	75	6	2.0	70	5

FIRST DAY (11.10.2019 r.) – SPRINT

Event Center

CHANGE OF PLACE AND COORDINATES

Osiedle Dąbie GPS N53°23.911' E14°40.210'

School Complex No. 2 Szczecin Portowa 21 street

Map

„Osiedle Dąbie” (nr 2019-069-2652-ZPM)

Scale: 1 : 4 000, e-2m, format A4

Author: Hubert Świerczyński

Updated: September 2019

Course setter: Mateusz Kula

Time limit: 90 minutes



Description of the area

The layout of the old town with the buildings of typical 80's blocks. Flat area with open car traffic

Competitors are subject to traffic regulations

An example of a control point on the night - a pole or trestle, reflection with no lantern



Parking

There will be no organized parking in the Competition Centre.
Parking available in the Lidl store. Participants park in the store at their own risk.
Distance from the Competition Centre - 350 m.

Start

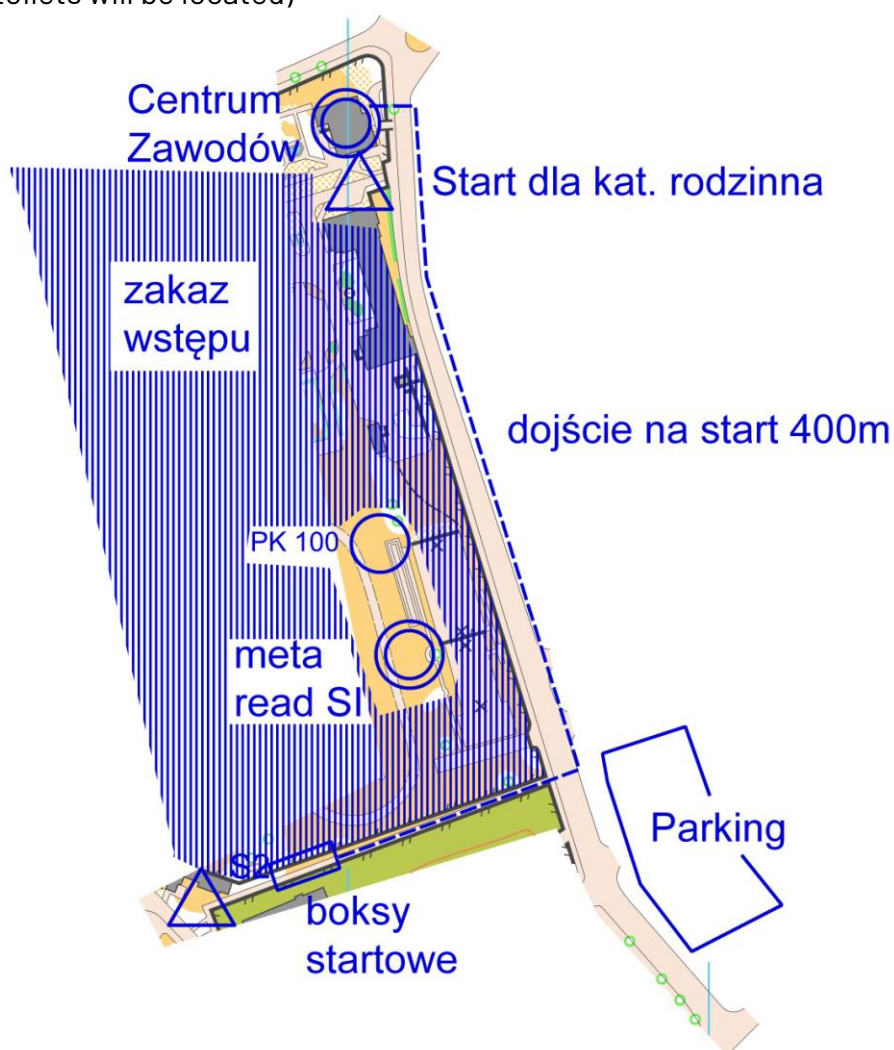
Start at 7:00 p.m.
Distance from the Competition Centre to the start - 400m.
The route to the start is marked with white and red tape.

Finish

In the Event Centre

Warm-up zone

Competitors can warm up on the pavement on the way to the start. It is forbidden to enter the school premises outside the marked place (entrance to the building where the office and toilets will be located)



SECOND DAY (12.10.2019 r.) – classic

Event Center

The Forest Glade at Chłopska Street in Szczecin

GPS N53°21.335' E14°39.896'

Map

„Wielka Niedźwiedzianka” (nr 2019-71-2654-ZPM)

Scale: 1 : 10 000, e-5m, format A4

Author: Wojciech Dwojak, Jacek Morawski

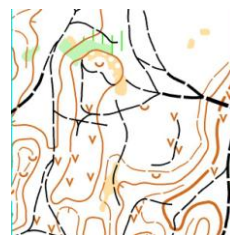
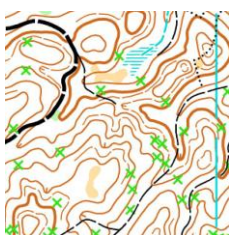
Updated: August 2019

Course setter: Bartłomiej Mazan

Time limit: 180 minutes

Description of the area

Typical moraine, passability from very good to difficult with a well-developed road network.



Start

Start at 12:00 a.m. **ATTENTION. CHANGE OF THE HOUR**

Distance from the Competition Center to the start - 1200 m, 20m elevation gain

At the start, bags for players' things will be available, which will be transported to CZ.

Access to the start is marked with red tapes.

Finish

In the Event Center

Buffet

A well-stocked buffet will be located in the Competition Center.

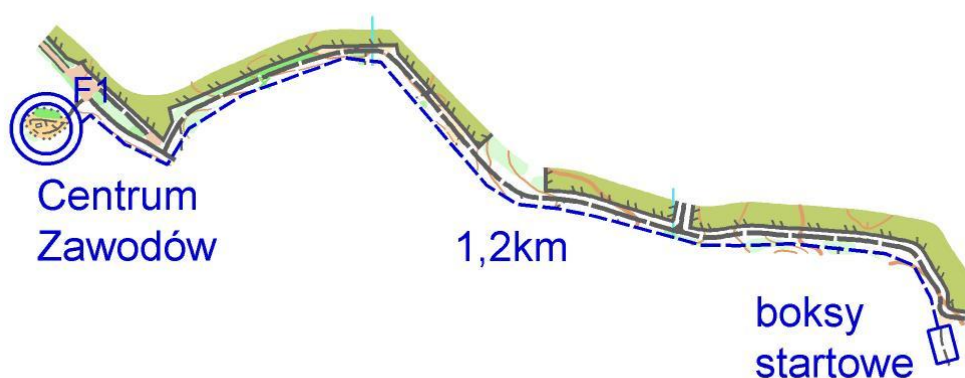
Washing

In the Competition Center you will be able to wash yourself in a bowl of cold water.

Parking

In the Competition Center, parking is only available for disabled competitors in the (Para) category for approx. 20 cars. Non-disabled players are asked to park in the housing estate as per the diagram below.

Recommended parking in the estate - free and paid



SECOND DAY (12.10.2019 r.) – PreO

Event Center

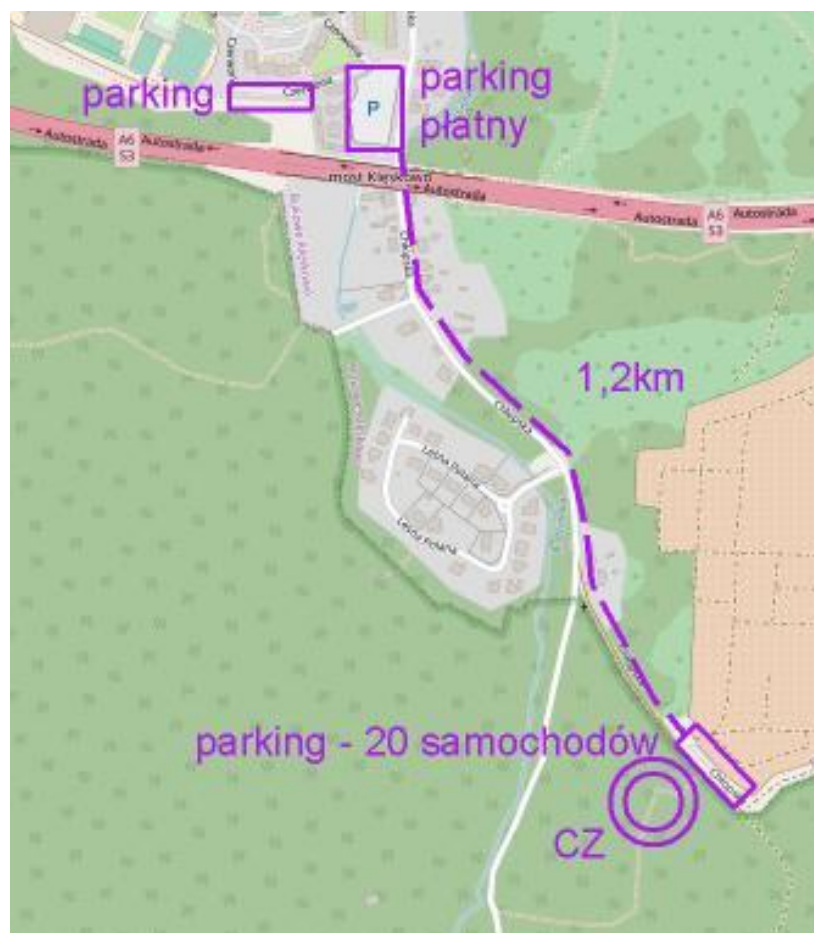
The Forest Glade at Chłopska Street in Szczecin

GPS N53°21.335' E14°39.896'

Parking

In the Competition Center, parking is only available for disabled competitors in the (Para) category for approx. 20 cars. Other participants are asked to park in the housing estate as per the diagram below.

Recommended parking in the estate – free and paid



Map and terrain

"Droga Górska 2" ISSOM 2007

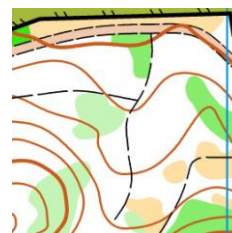
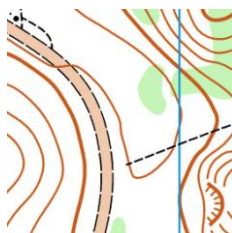
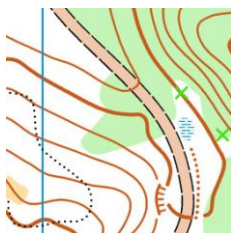
Scale 1:4000, e=2m, format A4

Author: Wojciech Dwojak

Updated: September 2019.

Course setters: Aleksandra and Bartłomiej Mazan

A typical moraine, with very good to very difficult passages with a well-developed road network. The route will run along a paved road on which you can easily move on wheelchairs.



Categories

Elite OPEN

Elite PARA

A-class

Routes parameters

Elite:

Route length: 1km / 46 meters elevation

Points: 29 + 2 time stations with 3 tasks after the course

Time limit for OPEN: 117 minutes

Time limit for PARA: 130 minutes

A-class:

Route length: 1km / 46 meters elevation

Number of points: 15 + 2 time stations with 3 tasks after the course

Time limit: 90 minutes

Finish

The finish in the forest, then 2 time stations. The distance from 2 time stations to the Competition Center is about 1000 meters.

Confirmation of points: SportIdent, in case of failure, please raise your own safety pin in the reserve boxes on the map.

Start: 100 m from the Competition Centre

Zero tolerance

In order to determine the exact answer we have set a "zero tolerance" to 4 meters. This means that in the field, in the event of a ZERO response, the nearest kite will be at least 4 meters from the correct place.

Board of Appeal / Jury

- Tomas Lestinsky (CZE)

- Charles Bromley Gardner (GBR)
- Jacek Wieszaczewski (POL)



THIRD DAY (13.10.2019 r.) – middle

Event Center

Former Grota Restaurant at Grabowa Street in Szczecin

GPS N53° 22.412' E14° 37.072'

Map

„Armatnie Wzgórze 2” (nr 2019-070-2653-ZPM)

Scale: 1 : 10 000, e-5m, format A4

Author: Bartłomiej Mazan, Hubert Świerczyński

Aktualność: wrzesień 2019

Course setter: Bartłomiej Mazan

Time limit: 120 minutes



Description of the area

A typical moraine, mostly well passable with a poorly developed road network.

Parking

Parking1 – Event Center – 1,1km

Parking2 – Event Center – 1,4km

Start

Start at 9:00 a.m.

Distance from the Event Center to the start – 1700 m, 70m elevation

At the start, bags for players' things will be available, which will be transported to CZ.

Access to the Middle start is marked with blue tapes.

Finish

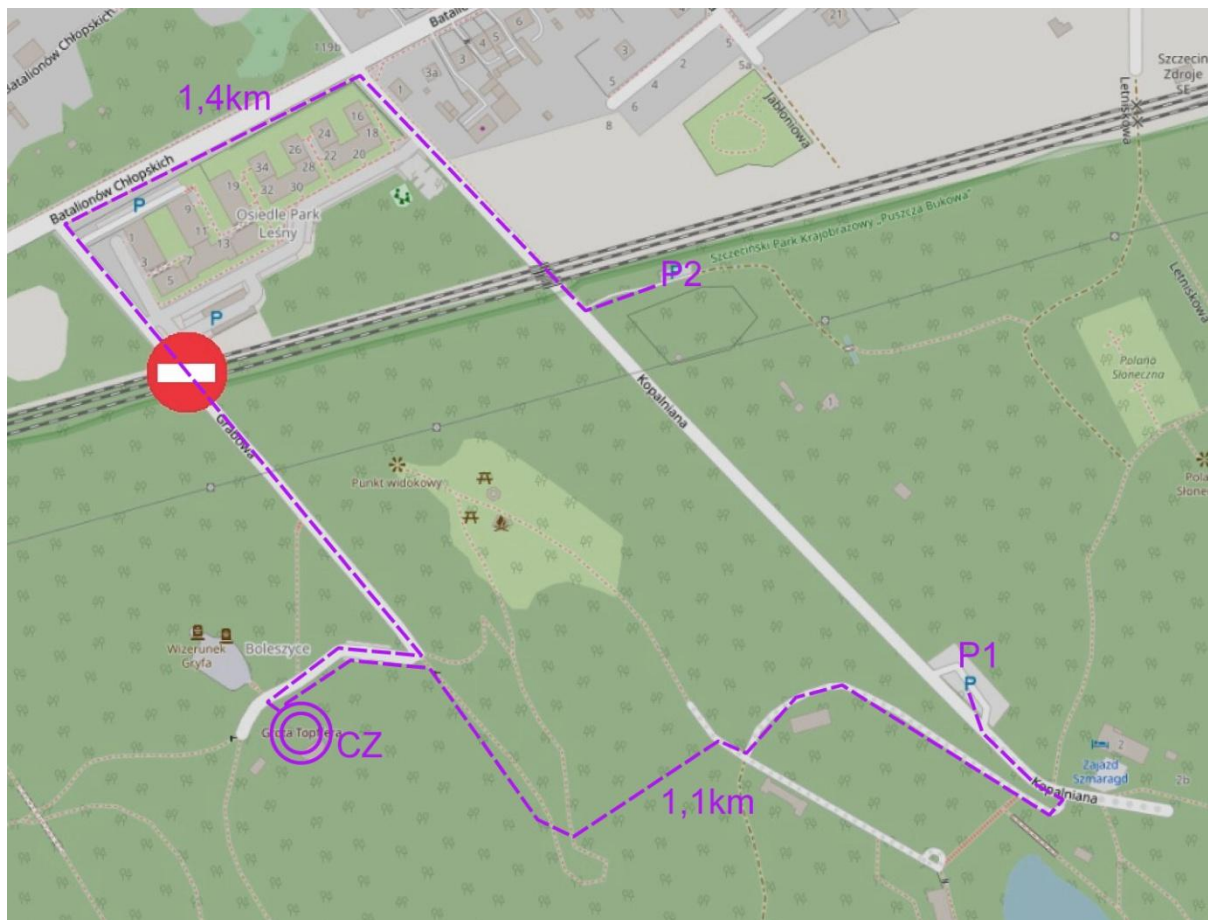
In the Event Center

Buffet

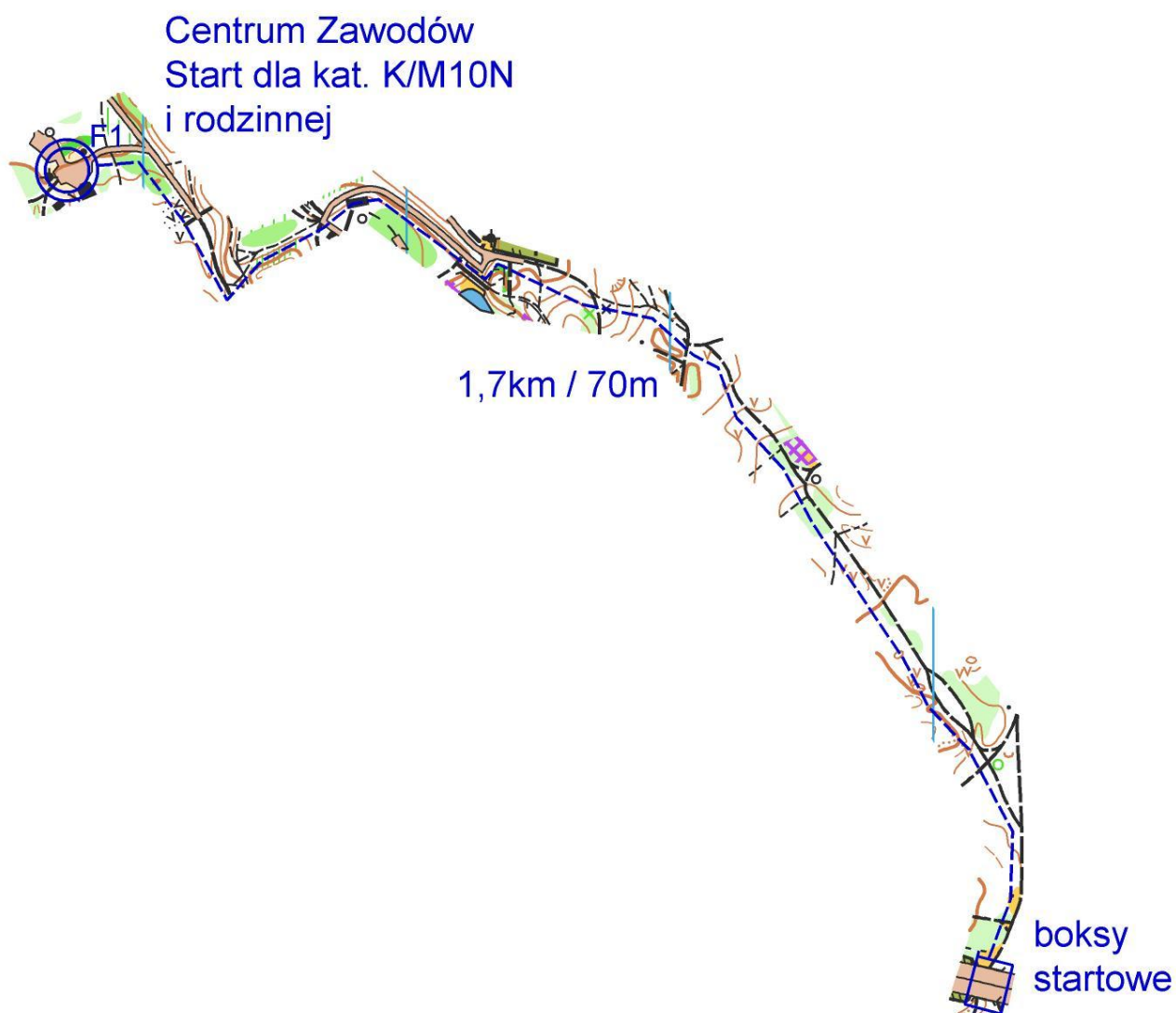
A well-stocked buffet will be located in the Competition Center.

Washing

In the Competition Center you will be able to wash yourself in a bowl of cold water.



Bukowa Cup VI – 11-13 October 2019 – Szczecin
bno.szczecin.pl



THIRD DAY (13.10.2019 r.) – TempO

Event Center

Former Grotta Restaurant at Grabowa Street in Szczecin

GPS N53° 22.412' E14° 37.072'

Map and terrain

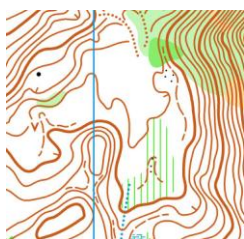
„Kopalnia Kredy”

Scale 1 : 4 000, e=2m, ISSOM 2007, format A4

Timeless: summer 2019

Author: Wojciech Dwojak

The area of the former chalk mine, an area with very steep slopes with rich micro-relief. Difficulties difficult, wetland in places. We recommend starting with an assistant for wheelchair competitors.



Parking

Available for disabled people at the Competition Center. Other players as per the diagram above.

Categories

Elite without division into OPEN and PARA

A-class

Competition format

7 stations with 6 points and 5 questions for the Elite - maximum response time at one station 150 seconds, warning about the ending time after 130 seconds

7 stations with 6 points and 3 questions without the possibility of answering Zero for A-class - maximum response time at one station 90 seconds, warning about the ending time after 70 seconds

Penalty for wrong answer: 30 seconds for both categories

You can choose between bound or loose maps.

The route is calculated from the exit from CZ to return to CZ: approximately 1.1 km

Volunteers will be available to help people in a wheelchair in the steep access road to the station.

Start organization

Competitors start in their start minutes. Please, stop at the place marked with "Stop" sign.

Zero tolerance

In order to determine the exact answer we have set a "zero tolerance" to 4 meters. This means that in the field, in the event of a ZERO response, the nearest kite will be at least 4 meters from the correct place.

Jury

- Tomas Lestinsky
- Charles Bromley Gardner
- Jacek Wieszaczewski

