

The 4th Asian Orienteering Championships & Asian 4 Days 2016



CHIA-YI, TAIWAN

27 July – 1 August, 2016

Bulletin 1

A WARM WELCOME TO TAIWAN

The 4th Asian Orienteering Championships (AsOC 2016) will be held in collaboration with the Asian 4 Days orienteering competitions in Taiwan.

Chinese Taipei Orienteering Association is pleased to welcome Asian and world elite orienteers to take part in Asian highest level orienteering event in Taiwan.

Competitors in the Asian 4 Days also have the opportunities to run on the [AsOC 2016 terrain and maps](#).

We are sure AsOC 2016 will give you an enjoyable and unforgettable experience.

Welcome to AsOC 2016 and welcome to Taiwan!

ORGANISER

[Chinese Taipei Orienteering Association](#)

AsOC 2016 ORGANISING COMMITTEE

Cimmons Kao	President of CTOA
Tina Chen	Secretary General of CTOA
Clement Chan	IOF Senior Event Advisor (HKG)
Chun-Ming (Jimmy) Chen	Event Director
Yau-Lung Jen	National controller 1
Chang-Chan Yang	National controller 2

CONTACT

Website: www.ctoa.tw

Address: Room 906, No. 20, Zhulun St., Zhongshan Dist.,
Taipei City 104, Taiwan (R.O.C.)

Tel: +886 2 87711444

Email: orienteeringtw@yahoo.com.tw

EVENT CENTRE AND VENUE

The event centre is located at Chung-Cheng University (CCU, GPS: WGS84LL 120.470371, 23.559403) in Chai-Yi County with meeting rooms, stadium, gymnasium and swimming pool nearby.

The university campus is also used for model event and demonstration of technical model. The distances from event centre to the competition venues are about 30 minutes to 1 hour respectively by bus.

The events will be organized at Chia-Yi Park, Chia-Yi University, Tsou-Ma-Lai Farm, and Shinhua National Forest Arboretum.

CLASSES AND PARTICIPATION RESTRICTIONS FOR AsOC 2016

There are the following competition classes:

1. M20E, W20E, M21E and W21E
2. M/W 12, 14, 16, 18, 20, 21, 35, 40, 45, 50, 55, 60, 65, 70.

Competitors representing member Federations of the IOF, defined by the International Olympic Committee as belonging to the Asian continent, can compete in AsOC.

Competitors representing other member Federations of the IOF can participate in AsOC but will not be eligible for Asian titles, medals or diplomas.

In the individual competitions, Federations may enter up to 10 women and up to 10 men.

In the relay competition, a federation may enter maximum of 2 teams in each gender category, but only the better-placed team will be counted in the prize list.

In the Sprint Relay, each Federation may enter 2 teams consisting of 4 team members of whom at least two must be women, but only the better-placed team will be counted in the prize list.

The organiser reserves the right to combine classes with less than 4 entrants.

IOF MEMBER FEDERATIONS IN ASIA

CHN=China, HKG=Hong Kong, INA=Indonesia, IND=India, IRI=Iran, JPN=Japan,
KAZ=Kazakhstan, KGZ=Kyrgyzstan, KOR=Korea, MAS=Malaysia, MGL=Mongolia, NEP=Nepal,
PAK=Pakistan, PRK=DPR Korea, THA=Thailand, TPE=Chinese Taipei

COMPETITION RULES

The 2015 edition of Competition Rules for IOF Foot Orienteering Events and its Appendix 8 (The Asian Orienteering Championships) will be applied to the AsOC 2016.

THE TERRAIN AND PRELIMINARY COURSE INFORMATION

Events	Map	Terrain	Map scale	Contour interval	Winning time (minutes)		
					M/W 10, 12	M/W 14,60, 65,70	M/W 16,18,20,21, 35,40,45,50,55
Sprint	Chia-Yi Park	Park	1:4000	2m	8-10	10-12	12-15
Middle	Shinhua National Forest Arboretum	Forest	1:7500	5m	12-15	15-20	20-25
Sprint Relay	Chia-Yi University	Campus	1:5000	2m	30-40 (per leg)		
Relay	Tsou-Ma-Lai Farm	Farm and forest	1:7500	5m	12-15 (per leg)		
Model sprint	Chung-Cheng University	Campus	1:4000	2m	12-15 (per leg)		
Model middle		Forest	1:7500	5m	12-15 (per leg)		

Map scale for middle and relay still need to be discussed and approved by IOF.

EVENT ENTRIES FOR AsOC 2016 AND Asian 4 Days

Deadline for preliminary entries for AsOC athletes and team officials: **February 29, 2016**

Deadline for final entries for AsOC 2016 athletes and team officials: **May 31, 2016**

Deadline for final entries for Asian 4 Days : **May 31, 2016**

Entries will not be valid until receipt of the payment of the entry and accreditation fees.

EVENT ENTRY FEES FOR AsOC 2016

Accreditation and fees for team members	Per person
Accreditation fee for athletes	NT\$300
Accreditation fee for team officials	NT\$500
Entry fee for Sprint	NT\$600
Entry fee for Middle	NT\$600
Entry fee for Sprint Relay	NT\$600
Entry fee for Relay	NT\$600
Transport package	NT\$2,000
Banquet	NT\$800
The accreditation includes: ID card, model event maps, souvenir, start and result list. Only AsOC 2016 officials and athletes with ID cards can use CCU sport facilities during its opening hours.	

EVENT ENTRY FEE FOR Asian 4 Days

Fees for participants	Per person
M/W 21, 35,40,45,50,55 (Sprint 1+Sprint 2)	NT\$1000
M/W 21, 35,40,45,50,55-(Middle 1+Middle 2)	NT\$1000
M/W 10, 12, 14, 16, 18, 20, 60, 65, 70- (Sprint 1+ Sprint 2)	NT\$800
M/W 10, 12, 14, 16, 18, 20, 60, 65, 70- (Middle 1+Middle 2)	NT\$800
Transport package	NT\$2000
Banquet	NT\$800
Model event map can be purchased at the event centre office during its opening hours.	

ENTRY INTO THE TAIWAN (ROC VISA)

Foreign passport holders require a valid visa or landing visa to enter the Republic of China (Taiwan), however, many countries are visa exempt. Please contact the ROC (Taiwan) embassy in your country [and/or browse the website of the National Immigration Agency of Taiwan, ROC \(www.immigration.gov.tw\)](#) for further information on the requirement.

OPPORTUNITIES FOR TRAINING

An Official 3-day training camp will be organised around the end of Feb 2016 at World Games 2009 terrains in Kaohsiung city. Training camp details will be announced on CTOA website at the end of 2015. Teams or individuals who would like to participate in the training camp are [needed](#) to contact CTOA for further arrangement. Teams are also welcome to participate in any national events in Taiwan which will be announced on the official website of Chinese Taipei Orienteering (CTOA) at the end of 2015.

AsOC 2016 PROGRAMME

Date	Time	Events
Wed., July 27	0800-1700	Arrival
	1400-1500	Model event & technical model
	1900-2000	Team official meeting (sprint)
Thur., July 28	1000-1200	Sprint
	1630-1730	Opening ceremony & prize giving (sprint)
	1900-2000	Team official meeting (middle)
Fri., July 29	1000-1400	Middle
	1900-2000	Prize giving (middle)
Sat., July 30	0800-1600	Rest day and sightseeing
	1900-2000	Team official meeting (relay)
Sun., July 31	1000-1200	Relay
	1830-1900	Prize giving (relay)
	1900-2000	Team official meeting (sprint relay)
Mon., August 1	1000-1200	Sprint relay
	1700-1800	Prize giving (sprint relay)
	1900-	Closing ceremony and banquet
Tue., August 2	0800-	Departure

Asian 4 Days 2016 PROGRAMME

Date	Time	Events
Wed., July 27	0800-1700	Arrival
	1400-1500	Model event & technical model
Thur., July 28	1000-1200	Sprint 1
	1630-1730	Opening ceremony
Fri., July 29	1000-1400	Middle 1
	1900-2000	Prize giving (middle)
Sat., July 30	0800-1600	Rest day and sightseeing
Sun., July 31	1000-1200	Middle 2
	1830-1900	Prize giving (middle1+middle2)
Mon., August 1	1000-1200	Sprint 2
	1700-1800	Prize giving (sprint1+sprint2)
	1900-	Closing ceremony and banquet
Tue., August 2	0800-	Departure

TIME KEEPING AND PUNCHING SYSTEM

The SPORTident (SI) punching system will be used. SI-card version 9 will be provided for all national teams. [SPORTident equipment will be demonstrated at the Model Events for the competitors of Asian 4 days.](#)

ACCOMMODATION, TRANSPORTATION AND CATERING

Competitors and team officials are expected to arrive on Wednesday 27th July and take part in the model event and technical model at CCU. The official hotel, Fu-Ya (GPS: 120.469293, 23.558268), is 3 minutes away from the event centre by walking. Please note that July and August are busy season for travelling and sightseeing in Taiwan. Early return of accommodation booking form is recommended. Teams or competitors who live other than the official hotel need to arrange their own transportation for model event, technical model, meetings and ceremonies.

AsOC 2016 office will accept requests for accommodation according to the categories below.

Categories	Cost
A. Room with two single beds	NT\$1,800 per room including 2 breakfasts
B. Room with two queen size beds (For family or friends who don't mine to share bed. Maximum for 4 people.)	NT\$2,600 per room including 4 breakfasts

A free shuttle bus will be arranged every 45-60 minutes on Wednesday 27th July, from 9am to 5pm, from Chai-Yi High Speed Rail station to official Fu Ya hotel. A service desk with volunteers at the station lobby will arrange the seats for arrival teams and competitors. Teams or competitors who miss the shuttle bus can take taxi which will cost about 600 NT

dollars to Fu Ya hotel or Chung-Cheng University.

Transport package for AsOC 2016 is offered at a cost of **NT\$2,000**. This includes transportation to/from competition areas, closing ceremony/banquet and the trip from Fu Ya hotel to Chia-Yi High Speed Rail on the departure day, Tuesday 2nd August morning. The transportation package must be reserved together with entry form.

Participants can arrange their own catering especially for food restrictions such as vegetarian. AsOC 2016 can offer lunch box (normally with bread, drink and fruit) and buffet dinner (for no food restriction) at the event centre during competition dates.

The prices will be **NT\$100** for one lunch box and **NT\$150** for one buffet dinner.

The meals also need to be reserved together with entry form.

A banquet will be arranged in collaboration with the AsOC 2016 closing ceremony at 5 stars Nice Prince Hotel 7F, Fusion Restaurant, Chai-Yi city. The banquet **price** is **NT\$1,000**/person including transportation to be paid together **with the payment of accommodation and catering charges**.

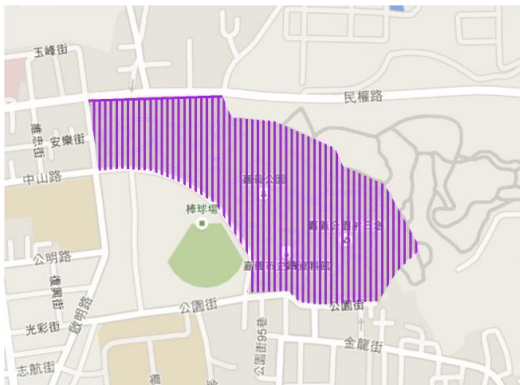
SIGHTSEEING

One day trip to give foreign competitor experiencing the local culture and sightseeing will be organized on the resting day on Saturday 30th July.

The charges and travel details will be announced on Bulletin 2.

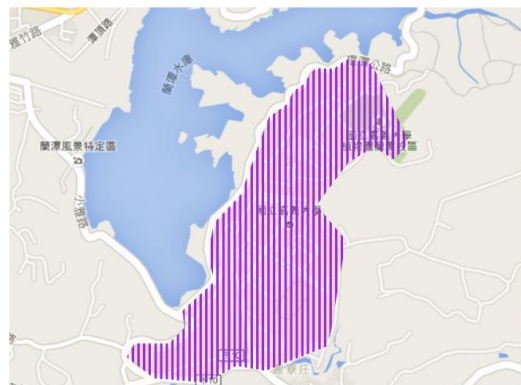
EMBARGOED AREAS

This embargo applies to all potential AsOC 2016 team members (runners, team leaders, coaches, doctors, etc.)



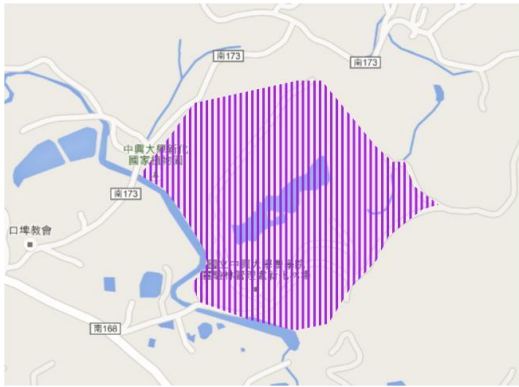
Chia-Yi Park

(GPS: 120.470371, 23559403)



Chia-Yi University

(GPS: 120.483525, 23.463673)



Shinhua National Forest Arboretum
(GPS: 120.352949, 23.026777)



Tsou-Ma-Lai Farm
(GPS: 120.429494, 23.137034)

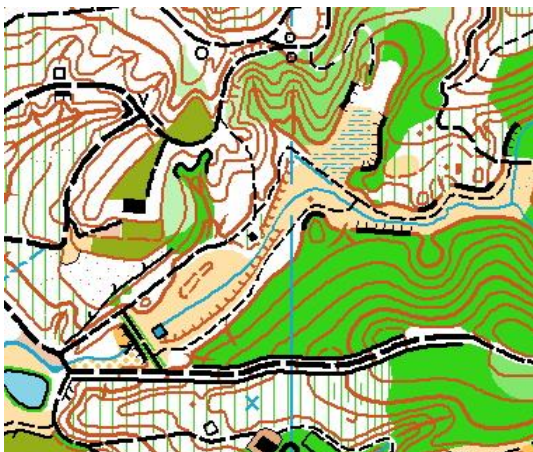
OLD MAP SAMPLES



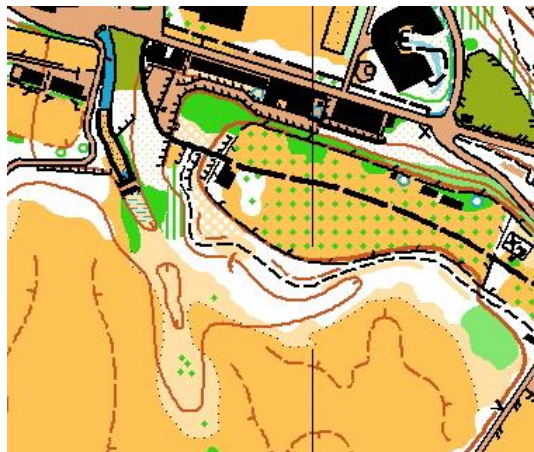
Chia-Yi Park (ISSOM)



Chia-Yi University (ISOM)



Shinhua National Forest Arboretum
(ISOM)



Tsou-Ma-Lai Farm (ISOM)

CLIMATE IN SUMMER

In July and August the temperature ranges from 26⁰ C to 36⁰ C, humidity averages at 75% and an average of 76mm of rain falls.

INSURANCE

It is a requirement for AsOC 2016 competitors and officials to have medical health insurance during their staying period in Taiwan.

FURTHER INFORMATION

Further information will be circulated to the Asian federations and announced on IOF website [in bulletin 2 and bulletin 3 to be published around January 2016 and June 2016 respectively.](#)