

Fin5 TrailO

Bulletin 4 - Event Information

Welcome

Kuopion Suunnistajat is organizing Fin5 orienteering week in July 2019. Fin5 is annual orienteering week from 2000 up to 4000 competitors. This time there will be five foot competition in six days. For the first time ever compete in TrailO is also possible. In TrailO five competitions will be run in four middle days of the week. Even better you can participate for both because there is no overlap on schedule. You are welcome to come and have fun with world class TrailO-competitors.

There are **changes** to compared to previous information (Bulletin 1). WRE TempO is not held in downtown Nilsia, but on Halssi instead. Order of the competitions: WRE TempO is before WRE PreO. Competition day remains the same. Also entries to competitions (2 = PreO, 3 = TempO). To be sure your entries use "More information for the organizer"-field at registration form.

Venue

The Fin5 orienteering week is held in Tahko area. About 60 km by car from nearest city Kuopio.

<https://www.google.com/maps/dir//63.2920148,28.039184/@63.2318843,27.5233572,9.25z/data=!4m2!4m1!3e0>

Organizers

The event will be organized with Fin5 organization team, powered by Kuopion Suunnistajat and extended with well known TrailO names:

Hanna Väättäinen

Event Director

Juha Hiirsalmi

Course Setter 1. Competition, Turun Metsänkävijät

Pekka Seppä

Course Setter 2. Competition (WRE), Suunta-Sepot

Petteri Hakala

Course Setter 3. Competition (WRE), Rasti-Nokia

Pinja Mäkinen

Course Setter 4. Competition, Koovee

Hannu Niemi

Course Setter 5. Competition, Epilän Esa

Sami Hyvönen

*IOF Event Adviser (WRE Competitions) / National Controller,
Nurmeksen Sepot*

Markku Hyvönen

National Controller (WRE Competitions), Nurmeksen Sepot

Contacts

Sami Hyvönen sami.m.hyvonen@gmail.com

Event Programme

Date	Event/Type	First Start	To Start	Place
Mon, July 15	PreO	16:00	0.1km; 2m	Huuhkaja, Lapinlahti nearby (10km) Rautavaara airfield
Tue, July 16	TempO (WRE) PreO (WRE)	10:00	0.9km; 2m 0.2km; 4m*	Halssi, Nilsä; *From TempO finish to PreO start.
Wed, July 17	TempO	16:15	0.1km; 12m	Piazza, Tahko Village
Thu, July 18	PreO Awards Ceremony	16:00	0.5 km; 24m	Panorama 180, Tahkovuori

Event Center and Accommodation

Event Center is Piazza in Tahko Village, located about 10 km from the nearest town Nilsä and 50 km from Kuopio Airport.

Please follow accommodation instructions of Fin5 Orienteering Week from website: <https://2019.fin5.fi/majoitus/>

Training Possibilities (WRE) and Models

There is no organized training possibilities. There are Models at the first two competition sites:

1. Huuhkaja
2. Halssi

Rules

The Competition Rules for IOF Trail Orienteering Events (2019) as well as instructions given by the organizers apply. Copy of the rules is available for download on the IOF website: <http://orienteering.org/trail-orienteering/rules/>.

Jury

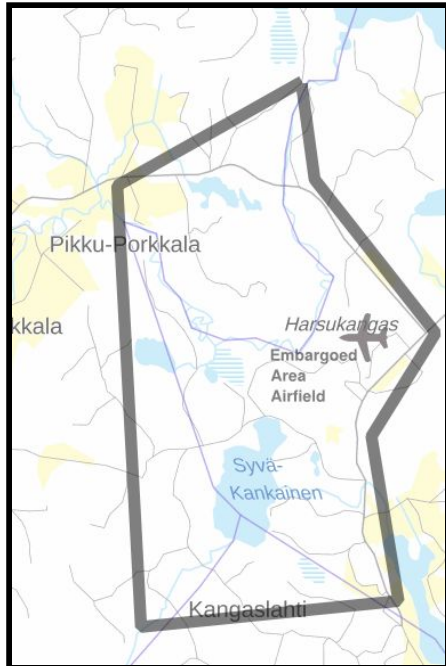
Competition Jury for whole week:

- John Kewley MDOC, GBR;
- Martin Fredholm OK Linné, SWE
- Geir Myhr Øien Ringsaker OK, NOR

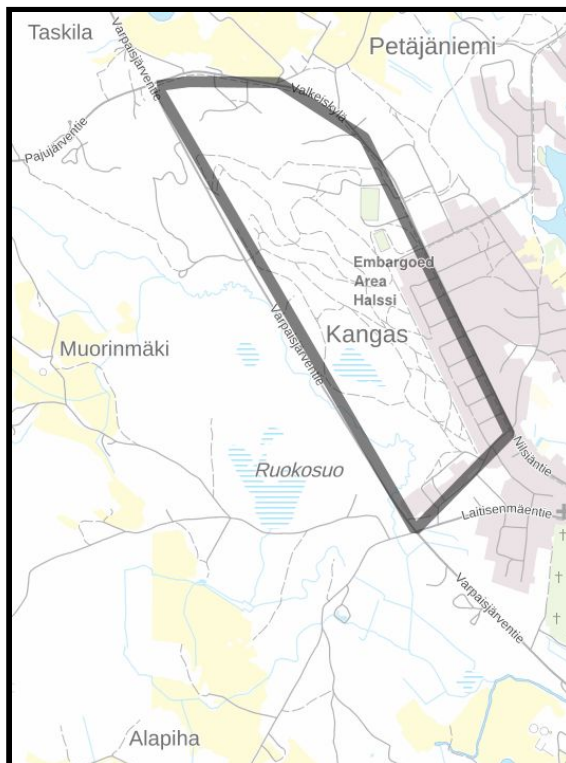
Info

Entries and payments are handled via Fin5 info at Fin5 Event Center and Fin5 competition sites. There is an info person at TrailO competition centers until the last start.

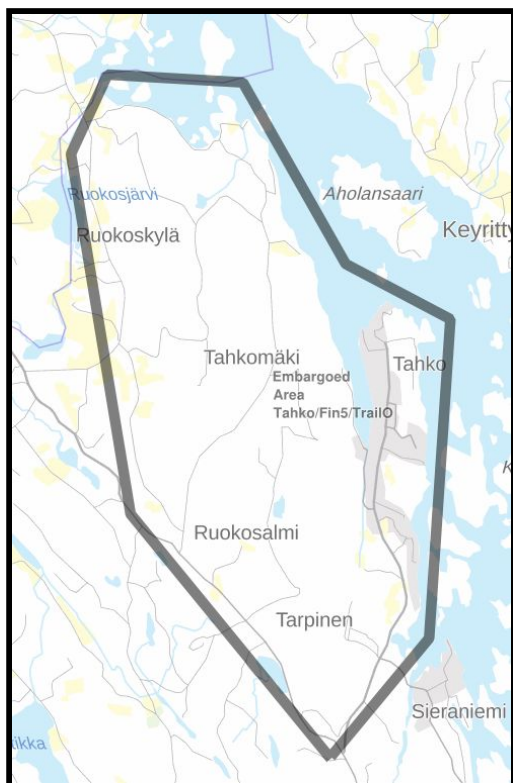
Embargoed Areas



The first competition is “nearby” Rautavaara airfield. Area is also used during Fin5 Orienteering Week and is not allowed for any other activity. Start and finish is on Huuhkaja, about 10 km from airfield to north west.



WRE TempO and PreO embargoed area is Kangas (aka. Halssi).



The fourth part is in Tahko Village. Embargoed area for Tahko Village is allowed to use during the week outside of orienteering activity. Fin5 sprint competition is in the same area earlier on the same day.

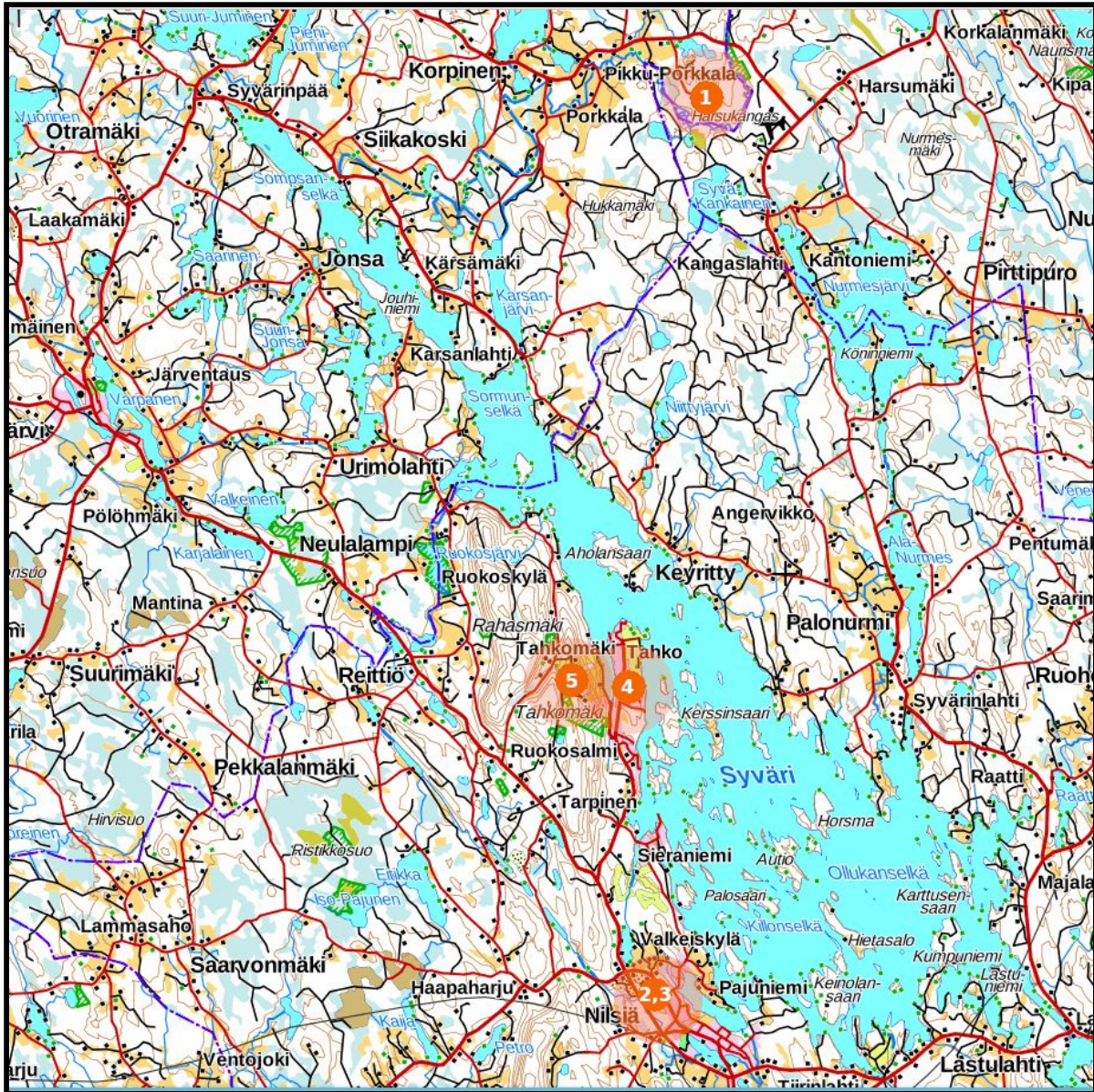
Map below has light green an area where moving without good cause is forbidden during 7.00 – 15:00 on 17.7.2019. Cause can be moving directly from accommodation to competition center (purple area) or back. From parking to competition center the west coast must be used (outside of wheelchairs because there is a steep bridge). In any circumstances remember the Fair Play.

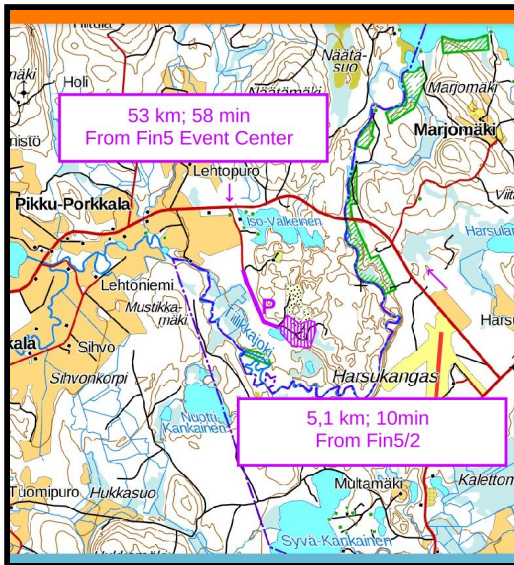
The fifth part is in Tahko. Embargoed area is somewhat used during orienteering week. However some of the area remains forbidden because of WOC 2023 or 25.



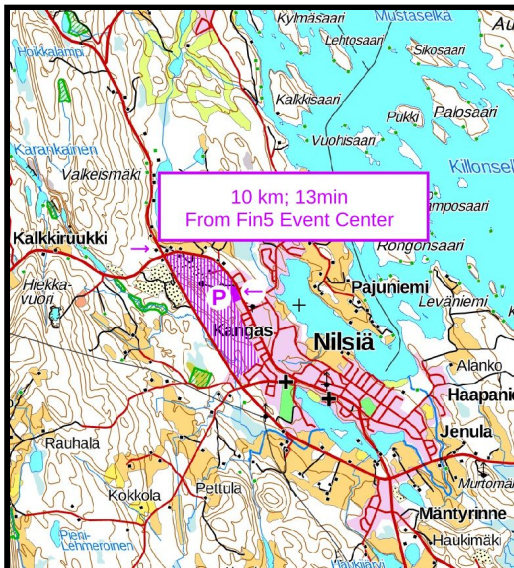
Event Centers

Overall map.





1. Competition
Huuhkajantie 18, Lapinlahti
(63°25'57.0"N 28°05'03.2"E). Guidance to parking is from intersection of Rautavaarantie (582) and Huuhkajantie. Out door. Nearest WC is on Rautavaara airfield (Fin5 %) about 5 km away.



- 2.
3. Competitions
Halssi's Stadium, Nilsia
(63°12'54.7"N 28°03'21.4"E). Guidance to parking is from intersection of Varpaisjärventie (577) and Nilsiantie (5762). In door possibilities. WC is in competition center.

4. Competition
Sääskiniementie 560, 73310 Tahkovuori
(63°17'27.0"N 28°02'16.4"E). Guidance to parking is the same as Fin5 orienteering week parking. For Para-parking please let parking officers know you're coming before so their can guide you to closer parking area. Ask more about it from info.

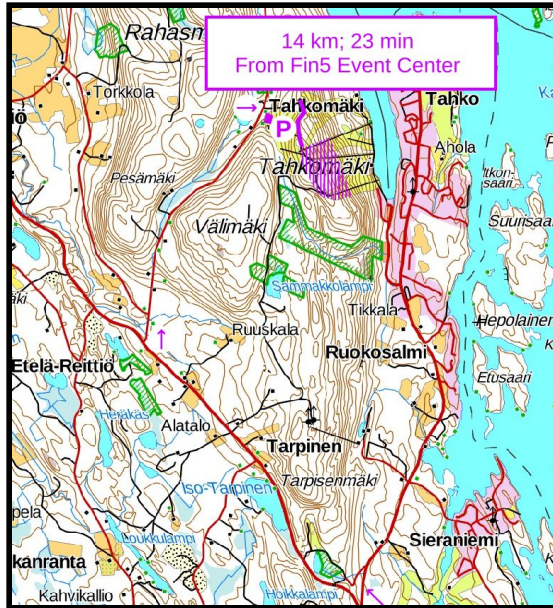


5. Competition

Tahkomäentie 333, 73310 Nilsjä

(63°17'44.8"N 28°00'47.4"E). Guidance to parking is from intersection of

Varpaisjärventie (577) and Tahkomäentie.



There is a restaurant in competition center.

WC in competition center is not easily accessible by wheelchair.

Terrain And Courses

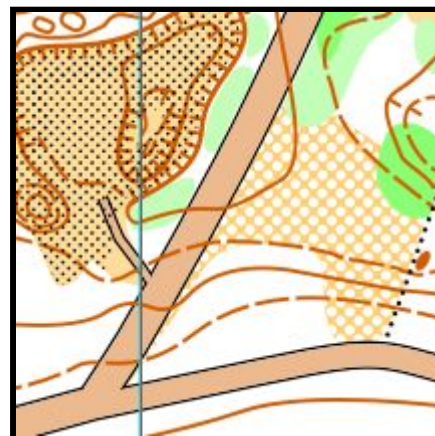
None of terrains is ever used to TrailO before. All maps are ISSOM and in scale 1:4000.

Date	Event/Type	First Start	To Start	Course	Controls	Max. Time	One-ways
Mon, July 15	PreO	16:00	0.1km; 2m	0.6 km; 15m	1x3, E 20 1x1, A 15	79 (85) min 64 (70) min	
Tue, July 16	TempO (WRE) PreO (WRE)	10:00	0.9km; 2m 0.2km; 4m	0.9km; 15m 1.1km; 5m	7x5 1x4, E 20 1x1, A 20	150 s 90 min	1
Wed, July 17	TempO	16:15	0.1km; 12m	2.2km; 12m	5x5	150 s	
Thu, July 18	PreO	16:00	0.5 km; 24m	0.8 km; 10m	E 22, 1x3 A 22, 1x1	90 min	1

We use voluntary competitors as marshals in some competitions. Start of marshals will be about 45 min before the first start.

1. **Huuhkaja** at Lapinlahti. Good visibility and moderate height differences. Pine tree forest with gravel pit. Path is mostly on graveled road. Contour interval 2m.

There is a separate A-course for first-timers.

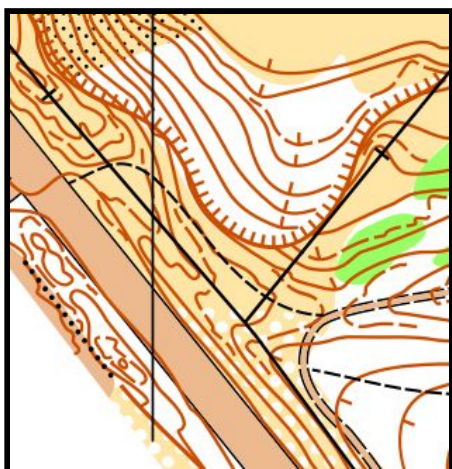


2. **Halssi** at Nilsjä, WRE TempO. Good visibility and great height differences. Assistance for wheelchairs may be needed. Pine tree forest with large depressions and gravel pits. Path is mostly on wide ski tracks and trails. Contour interval 2m.

Participants for TempO only are guided from PreO start to competition center.



3. **Halssi** at Nilsjä, WRE PreO. Good visibility and great height differences. Assistance for wheelchairs may be needed. Pine tree forest with large depressions and gravel pits. Path is mostly on wide ski tracks and trails. Contour interval 2m.



Participants for WRE Preo without Tempo should bypass Tempo start before first start time at 10:00. There will be guided course to the PreO start at 9:55.

PreO is immediately after Tempo. Queue start. Course has an One-way to up hill.

4. **Piazza** at Tahko Village. Urban environment. Path is mostly on paved or graveled road. Contour interval 2,5 m.
For fair play we wish everyone is west side of Sääskiniementie before starts.



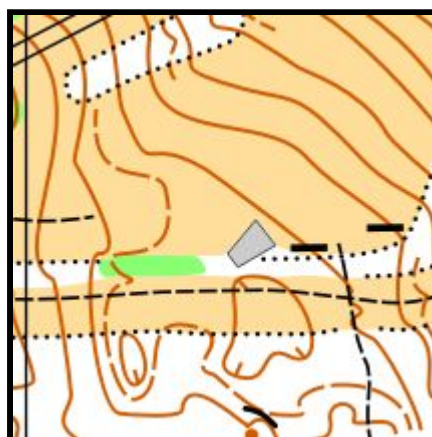
Symbol **420 Prominent vegetation feature** is 1 m to 1.5m a birch stump.



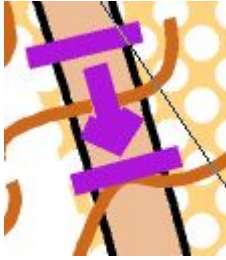
5. **Panorama 180** at Tahko. Great views and great height differences. Assistance for wheelchairs may be needed. Mixed forest with ski slopes. Path is on graveled maintenance road of ski slopes. Contour interval 2,5 m.

Up there is limited amount of parking so we wish that you match rides to fit in. More parking is downhill 600 m from competition center. Hill is steep.

Course has an One-way to down hill.



One-ways



There are 2 competitions that are using one-ways. One-ways are marked with starting and end lines and arrow to direction that move is allowed. Competitor is not allowed to move back on a one-way. One-ways are marked in the Control description as well.

Zero Controls

We ensure that no flag is closer than 4m to any Zero controls.

Time Controls

On time controls are no Zero-answers. There are six flags on time controls. There is only one task on each map. Maximum time per task is 30 seconds. Penalty from wrong answer is 60 seconds.

A time control procedure is as follows:

1. You are kindly asked to move to the time control: "Next!"
2. You come and sit in a chair.
3. You have to choose between two map set: Loose or Bounded. Loose means maps are separated from each other. (It usually faster.) Bounded means maps are linked to each other. (Good choice for beginners.)
4. You gain maps you choose, check from right side that your maps are in the right order: all the numbers can be seen. (Bounded maps are always in the order.) If they are not (rare but still) give them back to the marshal.
5. You have to choose between two answering methods: Point or Speak. Point means that you point a solution (not the flag), from solution table in front of you. Speak means you pronounce the name of the flags when you answer. Flags are always named from left to right as following: Alpha (Alfa), Bravo, Charlie, Delta, Echo, Foxtrot. Speak it faster if you know the names. Pointing is not slow but it's rare. Even beginners often choose Speak over Point.
6. Marshall introduces flags to you by pointing a flag and pronounce the name of it.
7. Marshall gives you rights to start with start command: "Time starts now!". And time starts.
8. First page is the cover. Remove it and first task appears.
9. Answer and move to the second task. You cannot change answer that is given. (Even start to given, Fox... is Foxtrot already)
10. Answer and move to the third task. If marshal ask you to repeat your last answer: "Repeat", you should repeat your answer.
11. Answer and time stops.
12. Give maps back to the marshal.
13. Check your answers for unintentional mistakes like hearing or writing. You cannot do it later.

TempO station are exactly like time controls with following exceptions:

1. There are Zero-controls.
2. There are five tasks.
3. Penalty from wrong answer is 30 seconds.

Punching

We use Otags punching system on every competition. WRE PreO we have manual punching for primary but you can use Otags for helping organizers. With Otags you **must** punch in order.

Use Otags as follows:

1. At Start you are given a Otags card.
2. Ensure that you select course right: E - for Elite, A - for public.
3. Punch a registration punch when marshall allows you to do so.
4. When you start, make a start punch. Any tag will do here.
5. On course, punch in order by selected answer.
6. When you finish, make a finish punch. Any tag will do here.
7. Return punching card to a finish marshal.

On time control/tempo stations Otags is used to registerate you to a station. Otags is not used punching / answering.

See Otags Test Run Video from Youtube to learn more:

<https://www.youtube.com/watch?v=gX2VLpZqtgA>

Results

Daily results are calculated in original way. In PreO points and time with penalty of 60 seconds is used. In TempO time with penalty of 30 second is used.

Total result is calculated in the following way:

1. Daily results are time with penalty of 60 seconds from wrong answer in preo and 30 seconds from wrong answer in time control or TempO **minus winners time. Meaning that winners result is 0 seconds.**
2. Four best daily results are taken into count. Total result is sum of daily results.
3. You must have at least four results to participate in total competition.

Classes

For whole week there is two classes available:

1. Competitive Elite (Open) class: E
2. Public (Open) class: A

Tempo and PreO in 16.7. in Elite class are WRE (world ranking event).

Entries

Please follow a registration guide: <https://2019.fin5.fi/trailo/registration-for-trailo/?lang=en> or
in finnish: <https://2019.fin5.fi/trailo-ilmoittautuminen/>

Entry fee for Elite class, until 30.6.: 90 €/week or 22 €/competition.

Late entry fee for Elite class: 110€/week or 25 €/competition.

Week: <https://2019.fin5.fi/tuote/trailo-week-foreign-orienteurs/>

Daily: <https://2019.fin5.fi/tuote/trailo-daily-registration-for-competition-class/>

Fee for public class is the same as other public class competitions. You can entry to public competition on site at Fin5 Info at competition or event center.

Daily: <https://2019.fin5.fi/tuote/trailo-daily-registration-for-open-public-class/>

Entries received by 1.7.

Class	Competition 1.	Competition 2.	Competition 3.	Competition 4.	Competition 5.	Total
Elit	64	65	56	55	58	69
Public	8	6	4	4	9	10
	72	71	60	59	67	79

Weather

You can check local weather of Tahko from:

<https://ilmatieteenlaitos.fi/saa/kuopio/tahko?day=4>

Cautions

At forest (at least on Huuhkaja) have been insects: mosquitoes, blackflies and small flies. Prepare yourself for those.

ATTENTION!

Competition 4 (TempO) maps have defect. Semi-open areas are not printed (symbols 402 ja 404).

Effects stations 1, 3 and 4.

Open land with scattered trees (402) has been printed as open area (401) and symbol Rough open land with scattered trees (404) has been printed as forest (405).

Missing Open land with scattered trees (stations 1, 3 and 4) are either outside the sector of flags or behind the flagged area or behind the sight obstruction.

Missing Rough open land with scattered trees (station 4) is inside the flagged area, but it stands out from the surrounding area thanks to the high grass and the small bushes.

	401		404
	402		405