



WELCOME TO JWOC 2020

The Turkish Orienteering Federation and the Metropolitan Municipality of Kocaeli would like to welcome everyone to the Junior World Orienteering Championships 2020.



Hacer Akyuz

President of Turkish
Orienteering Federation

I would like to state, how much we'll enjoy by showing you Turkish hospitality. We are taking the pride of organising the championship in unique forests in Gebze, Kocaeli which is 49 kilometres from İstanbul and has a history dating back to the 7th century BC. Gebze's industry is one of the strongest centres in Turkey. I believe that Gebze Technical University (GTU), one of the very qualified, prestigious university worldwide, is going to be a perfect event center.

In Turkey orienteering has been carried out as a sport under the control of the armed forces since the 1970's. In between 2002 and 2004 Orienteering Vice Presidency was within Mountaineering Federation following Scouting Federation. Since 2006, Turkey Orienteering Federation has been in progress independently. Meanwhile, we are taking part in organising many national and international events, in addition to major IOF events such as SEEOC, ESOC, MCO and WCup events. Turkey is a record holder of making the most participation to WOD.

For the very first JWOC in Turkey; we, with Kocaeli governorship, mayorship and GTU's precious support, are very honoured to welcome world's best orienteers and their families in Gebze, Kocaeli with its history, nature, hand – woven silk carpets and Turkish cotton candy. Have fun!

HOST CITY AND EVENT CENTER

Throughout history, Kocaeli has been a gateway connecting Europe with the Middle East and Asia. It was the capital of the ancient Kingdom of Bithynia and a crucial trade centre for the Eastern Roman Empire.

Today, along the commercially active Black Sea and the Marmara Sea shorelines, Kocaeli boasts 34 ports and industrial facility docks, making it a logistics heaven and a gateway to global markets. The province is a hub for both national and intercontinental routes. It is adjacent to Istanbul, one of the world's largest metropolitan centres and close to two international airports; Istanbul Sabiha Gökçen (SAW) and Istanbul Havalimanı (IST), 20 and 97 km. from the city centre respectively.



Kocaeli is home to more than 1,600,000 people and is one of Turkey's most densely populated cities. This is also the home port for the Turkish Navy, demonstrating the continuing historic and strategic importance of the province in military terms.

Gebze will be hosting town in Kocaeli.

Gebze is a district in Kocaeli Province, Turkey. It is situated 65 km (30 mi) southeast of Istanbul, on the Gulf of Izmit, the eastern arm of the Sea of

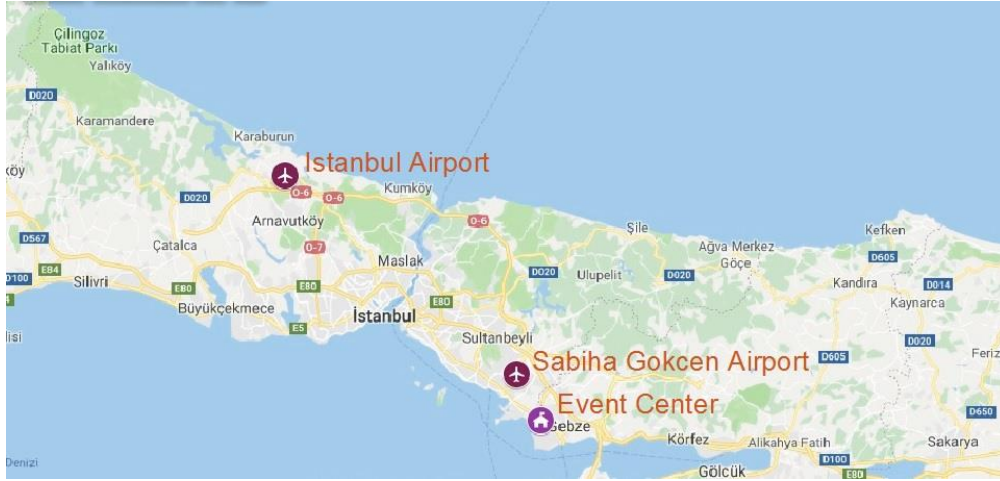
Marmara. Gebze is the second largest district in Kocaeli after İzmit, the provincial centrum in terms of population.



The district of Gebze is located in the westernmost portion of Kocaeli Province, with neighbors Tuzla to the west; Pendik, northwest; Şile, north; and Körfez, to the east. The district includes 6 municipalities (Gebze, Darıca, Çayırova, Dilovası, Şekerpınar, and Tavşancıl) and 22 villages (Ahatlı, Balçık, Cumaköy, Çerkeşli, Demirciler, Denizli, Duraklı, Elbizli, Eskihisar, Hatipler, Kadıllı, Kargalı, Köşeler, Mollafenari, Muallimköy, Mudarlı, Ovacık, Pelitli, Tavşanlı, Tepecik, Tepemanayır (Tepepanayır), and Yağcılar).

Event Center is Gebze Technical University (GTU). GTU has around 5.000 student during education period in Gebze. Distance from the Event Centre to the city centre Gebze is 4-5 km.





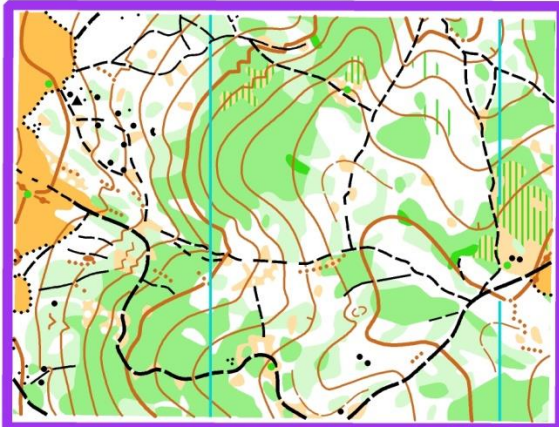
PROGRAMME

DATE	JWOC	KCUP (Public races)
26 June 2020 Friday	Arrival, Accreditation Model Event (middle,long,relay)	Registration
27 June 2020 Saturday	Opening Ceremony & Model Event (sprint)	Registration
28 June 2020 Sunday	Sprint & Medal Ceremony	Sprint
29 June 2020 Monday	Middle Qualification	Middle
30 June 2020 Tuesday	Middle Final & Medal Ceremony	Middle
01 July 2020 Wednesday	Rest Day	Long
02 July 2020 Thursday	Long & Medal Ceremony	-
03 July 2020 Friday	Relay & Medal Ceremony & Closing Ceremony	-
04 July 2020 Saturday	Departure Home	-

CLASSES

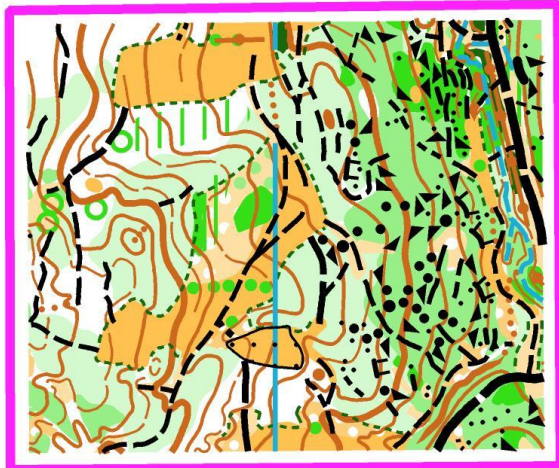
W20, M20. All competitors must be born in or after 2000 and must be full passport holding citizens of the country they are representing.

TERRAIN



Long & Relay

Altitude between 270-325 m.a.s.l. Oak trees and scrubs are the main vegetation with few thorny areas. Rich path network. Several open areas in the forest. Few slopes. Suitable for running. Stony and rocky areas are few.



Middle Qualification, Final

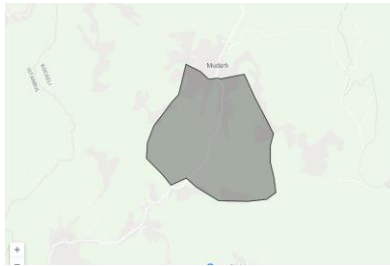
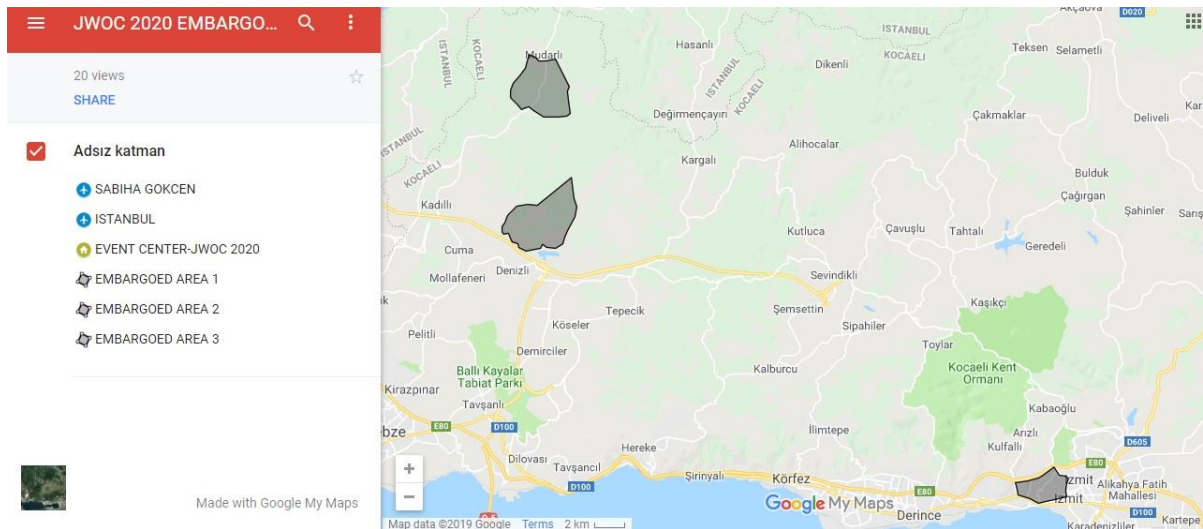
Altitude between 160-250 m.a.s.l. Vegetation is complex with thorns. Few open areas in the forest. Majority of the open areas covered by grass. Ditches are few. Rocky fields are the major features in some parts. Path network is not so rich.



Sprint

Altitude between 20-100 m.a.s.l. Narrow streets and many stairs/steps. Concrete and asphalt pavements. Some streets are forbidden for motor traffic. Human density is high. Runnable. Several walls by the streets.

EMBARGOED AREAS



You may reach dynamic google map via

https://drive.google.com/open?id=1uVxLLHvf_93aThOeYi2-SIQONkOzEPGF&usp=sharing

COURSES

Winning times and approximate lengths of courses			
Competition	Class	Winning Time	Approx. Length
Sprint	Women	12-15 min	3.0 - 3.1 km
	Men	12-15 min	3.5 - 3.6 km
Long	Women	55 min	6.8 km
	Men	70 min	10.5 km
Middle Qualification	Women	20-25 min	3.5 - 3.6 km
	Men	20-25 min	3.8 - 4.0 km
Middle Final	Women	20-25 min	4.0 km
	Men	20-25 min	4.8 km
Relay	Women	90-105 min/team	4.8 - 5.0 km
	Men	90-105 min/team	5.8 - 6.0 km

Map scales and contour intervals		
Competition	Scale	Contour Interval
Sprint	1:4,000	2.5 m
Long	1:15,000	5 m
Middle Qualification	1:10,000	5 m
Middle Final	1:10,000	5 m
Relay	1:10,000	5 m

PUNCHING SYSTEM

Sport Ident punching system will be used in all competitions.

ONLINE PRODUCTION

There will be GPS tracking, online results and live speaker at all events.

CLOTHING

There are no special regulations applying to runners concerning the type of clothing they choose to wear. But the organisers recommend use of long trousers for the Long distance, Middle distance and Relay races.

It is forbidden to use shoes with spikes in the Sprint competition and in Sprint training areas.

MAXIMUM NUMBERS PER TEAM

Each Federation may enter a team of up to 12 competitors. 6 women, 6 men and 4 team officials, max total 16 people.

ENTRIES

All entries must be made through IOF Eventor at <https://eventor.orienteering.org/Events/Show/5834>

The entry form will be available from 26 March 2020. Entries are done by the National team manager.

The deadline for Team Size Entry is April 26, 2020 (-2 months)

The deadline for Team Names Entry is June 16, 2020 (-10 days)

Every athlete and team leader needs to set up a profile passport size photo.

Each nation must provide a contact person and address that JWOC can communicate with.

ACCREDITATION FEE

Accreditation fee for both athletes and officials/coaches, 75€.

The accreditation fee includes:

- transport to/from Opening /Closing Ceremony,
- transport to/from model events,
- transport to quarantine areas,
- transport back to the Event Center from the arena of 5 races,
- new competition maps for the competitors and the team officials,
- participation in social activities,
- participation in the banquet which is not part of the official programme.

ENTRY FEE

Long Distance	50€
Sprint Distance	50€
Middle Distance Q+F	60€
Relay (per team)	120€

TRANSPORT

Gebze is easy to reach by car and rail being located 65 km south west of Istanbul connected by direct highway and railway. The nearest international airport is Sabiha Gokcen.

All competitions and model events will be operated by JWOC shuttle buses. This service is already included in the accreditation fee.

Transport between official accommodation and arenas, ceremonies and the excursions will be provided for all competitors and officials and is covered by the accreditation fee. Teams are allowed to organize their own transport to and from the arenas but no discount on the accreditation fee will be given.

Transport from/to the international airports will be provided on demand for extra fee shown below.

All competitors are required to use the official transport from the official accommodation and/or event center to the start areas

Istanbul Airport to/from Izmit (97 km) One Way	250 €
Sabiha Gokcen Airport to Izmit (20 km) One Way	100 €

ACCOMMODATION

The Organizing Committee offers several options for accommodation. Teams can choose hotels from 5 stars to student dormitory. Staying in a tent is also an option. The organization also offers transportation from the airport to Kocaeli.

ELITE HOTEL 5*			
TYPE	ROOM TYPE	FULL PENSION (Except Lunch) (A)	B & BREAKFAST (B)
A1-A/B	SINGLE	57 €	52 €
A2-A/B	DOUBLE	44 €	39 €
A3-A/B	TRIPLE	36 €	31 €
	Holiday Inn*		
B1-A/B	SINGLE	57 €	52 €
B2-A/B	DOUBLE	44 €	39 €
B3-A/B	TRIPLE	36 €	31 €
Student Dormitory			
D1	Person/day in Double Room with own toilet/showers No Breakfast, Dinner		15 €
Own Tent at Student Dormitory			
E1	Person/day general toilet/showers at the facility No Breakfast, Dinner		7 €

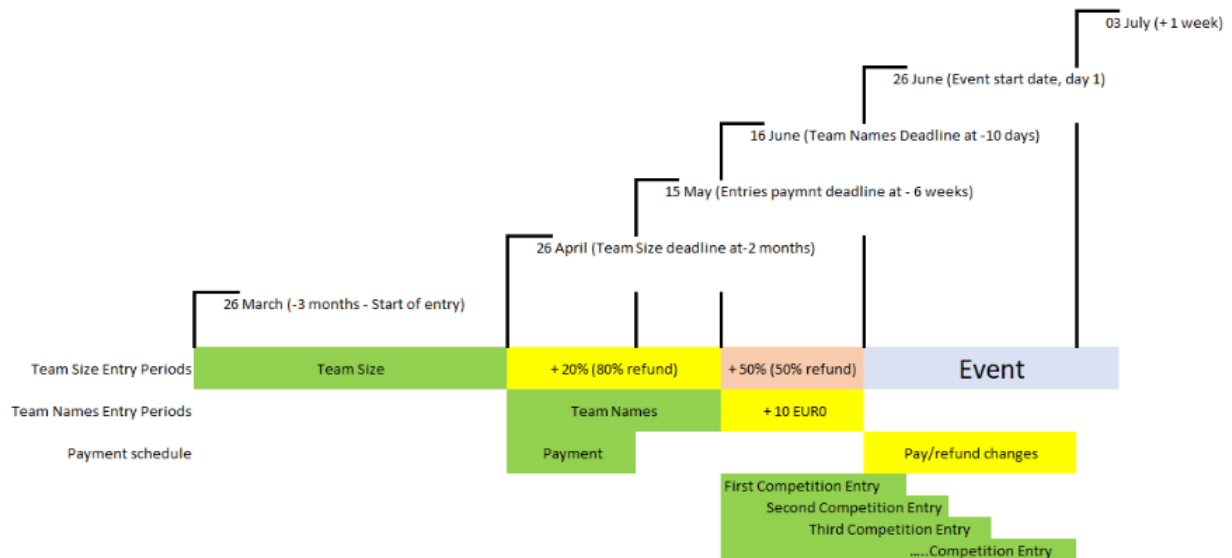
MEALS	
Lunch Box for all types Person/day	7 €
Breakfast for D1, E1 Person/day	7 €
Dinner for D1, E1 Person/day	10 €

PAYMENTS

All fees should be paid by bank transfer. Please note that the payer is responsible for all bank fees and charges both in their own country and in Turkey.

Entries will not be deemed valid until full payment is received by TOF.

For additions to the size of the team, accommodation bookings or transport between 26 April and 16 June, there will be a surcharge of 20% of the cost,



For cancellation of participants, accommodation bookings or transport between 26 April and 16 June, 80% of the amount paid will be refunded,

For additions to the size of the team, accommodation bookings or transport between 16 June and 26 June, there will be a surcharge of 50% of the cost,

For cancellation of participants, accommodation bookings or transport between 16 June and 26 June, 50% of the amount paid will be refunded,

Name changes made in the period 16 June to 26 June will cost 10€

PAYMENT DETAILS

Recipient:

Owner's name: Turkey Orienteering Federation

Owner's address: Güvenciler Mah. Güneş Sok. No:1/2 Çankaya/ANKARA

Bank name: Türk Ekonomi Bankası (TEB)

IBAN number: TR89 0003 2000 0000 0067 4849 05

TRAINING OPPORTUNITIES

The first official training camp will be organised from 26th August – 1st September 2019 with Zafer Cup.

Details in JWOC 2020 website www.jwoc2020.org and IOF Eventor <https://eventor.orienteering.org/Documents/Event/2919/1/1-st-Official-Training-Camp-2020>

The second official training camp will be organised btw 14-18 October 2019 following national championship on 19-20 October 2019 by TOF.

The third official training camp will be organised between 13-17 April 2020, Detailed/latest info about training facilities are on the event web site, <http://www.jwoc2020.org>.

MEDIA

We welcome all media representatives to JWOC 2020. Information can be received by contacting to info@jwoc2020.org.

In all arenas, work stations (tables and chairs) and internet connections as well as photo shooting areas in the terrain and the finish are provided.

The entry form for media representatives will be available on www.jwoc2020.org in advance.

CLIMATE AND WEATHER

Kocaeli's climate is classified as warm and temperate. The least amount of rainfall occurs in July.

The temperatures are highest on average in July, at around 23.6 °C.

VISAS

The following link of The Ministry of Foreign Affairs contains necessary info related with visa to enter Turkey and also the manner of receiving it.

<http://www.mfa.gov.tr/sub.en.mfa?cc4e437c-6769-4d79-9017-10b63c651224>

If an official invitation letter from JWOC organizer is needed, please make an official request to the following e-mail address, info@jwoc2020.org.

PUBLIC RACES (KCUP)

KCUP is a social part of JWOC 2020 and open for everyone. KCUP Races start immediately after JWOC Races and Medal Ceremonies. Each map of Kcup courses is 10€.

Kcup Classes are M/W: 12, 14, 16, 18-20, 21B, 21A, 21E, 35, 40, 45, 50, 55, 60, 65, 70+. In the case of a small number of entries per category, the organizer reserves the right to combine categories!

The Sportident electronic timing and punching system will be used. If you have your own SI card you may use it, otherwise you have to hire one when getting your number bib for 5€/day or 15€ for 4 days. You must return the hired card back to the organizer after your last stage. If you loose it then you have to pay an additional 50€.

Transport from/to Event Center to start/finish areas are to be provided on demand by the organizer. One way transport cost is 5€.

All SI card models can be used except for SI5. Air+ touch free system is not activated in SI stations, therefore you should punch directly.

Remember that you cannot borrow or lend your SI card from/to another competitor who has run another stage with that card during the week.

Overall results will be according to the rankings of 4 stages. The winners in all categories are getting medals. Times of prize giving ceremonies is to be announced by the organization

EVENT ORGANISATION

IOF Senior Event Advisor (SEA): Janos Manarin

IOF Event Advisor (Asistant): Simone Grassi

National Controller: Alen GAVAR

Event Director: Gokhan UNAL

Whatsapp: **+90 506 419 55 97** Email: ugokhan.jwoc2020@gmail.com

Administrative Affairs Coordinator: Ali Gunal Erdem

Technical Affairs Coordinator: Cihat Acar

Social Affairs Coordinator: Pervin Avsar

Course Director: Georgi Hadzhimitev

Event Secretary: Oguz Yildiz, **E mail:** info@jwoc2020.org

Web Site: <http://www.jwoc2020.org>



- SEE YOU IN GEBZE / KOCAELİ -