

# Fin5 TrailO

## Bulletin 2

### Welcome

Kuopion Suunnistajat is organizing Fin5 orienteering week in July 2019. Fin5 is annual orienteering week from 2000 up to 4000 competitors. This time there will be five foot competition in six days. For the first time ever compete in TrailO is also possible. In TrailO five competitions will be run in four middle days of the week. Even better you can participate for both because there is no overlap on schedule. You are welcome to come and have fun with world class TrailO-competitors.

There are **changes** to compared to previous information (Bulletin 1). WRE TempO is not held in downtown Nilsä, but on Halssi instead. Order of the competitions: WRE TempO is before WRE PreO. Competition day remains the same. Also entries to competitions (2 = PreO, 3 = TempO). To be sure your entries use "More information for the organizer"-field at registration form.

### Venue

The Fin5 orienteering week is held in Tahko area. About 60 km by car from nearest city Kuopio.

<https://www.google.com/maps/dir//63.2920148,28.039184/@63.2318843,27.5233572,9.25z/data=!4m2!4m1!3e0>

### Organizers

The event will be organized with Fin5 organization team, powered by Kuopion Suunnistajat and extended with well known TrailO names:

**Hanna Väättäinen**

*Event Director*

**Juha Hiirsalmi**

*Course Setter 1. Competition, Turun Metsänkävijät*

**Pekka Seppä**

*Course Setter 2. Competition (WRE), Suunta-Sepot*

**Petteri Hakala**

*Course Setter 3. Competition (WRE), Rasti-Nokia*

**Pinja Mäkinen**

*Course Setter 4. Competition, Koovee*

**Hannu Niemi**

*Course Setter 5. Competition, Epilän Esa*

**Sami Hyvönen**

*IOF Event Adviser (WRE Competitions) / National Controller,  
Nurmeksen Sepot*

**Markku Hyvönen**

*National Controller (WRE Competitions), Nurmeksen Sepot*

### Contacts

Sami Hyvönen    sami.m.hyvonen@gmail.com

## Event Programme

Date	Event/Type	Estimated First Start	To Estimated Start	Estimated Course	Place
Mon, July 15	PreO	16:00	0.1km; 2m	0.6 km; 15m	Huuhkaja, Lapinlahti nearby (10km) Rautavaara airfield
Tue, July 16	TempO (WRE) PreO (WRE)	10:00	0.9km; 2m 0.2km; 4m*	0.9km; 15m 1.5km; 15m	Halssi, Nilsia ( <b>Changed!</b> ) Halssi, Nilsia ( <b>Changed!</b> )
Wed, July 17	TempO	16:15	0.1km; 12m	2.2km; 12m	Piazza, Tahko Village
Thu, July 18	PreO Awards Ceremony	16:00	0.5 km; 24m	0.6 km; 5m	Panorama 180, Tahkovuori

\* To PreO start from Tempo finish.

## Event Center and Accommodation

Event Center is Piazza in Tahko Village, located about 10 km from nearest town Nilsia and 50 km from Kuopio Airport.

Please follow accommodation instructions of Fin5 Orienteering Week from website: <https://2019.fin5.fi/majoitus/>

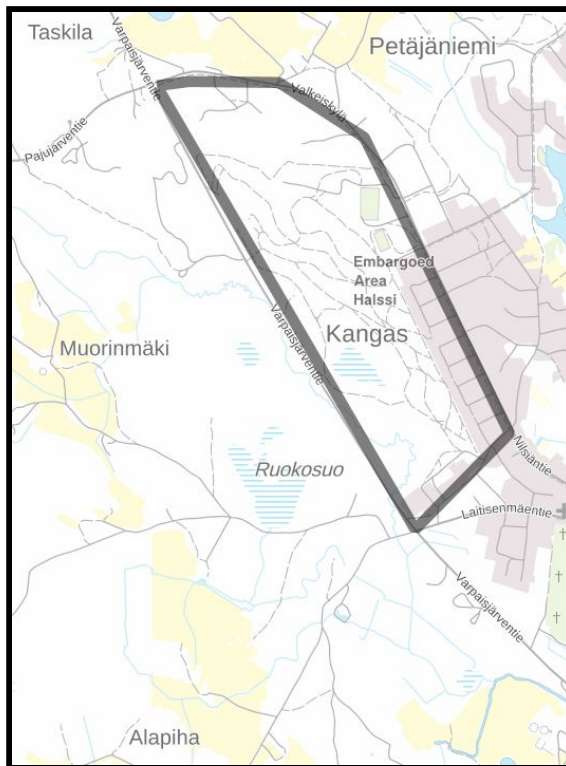
## Training Possibilities (WRE)

There is no organized training possibilities. For maps ask further information from Sami Hyvönen by email [sami.m.hyvonen@gmail.com](mailto:sami.m.hyvonen@gmail.com).

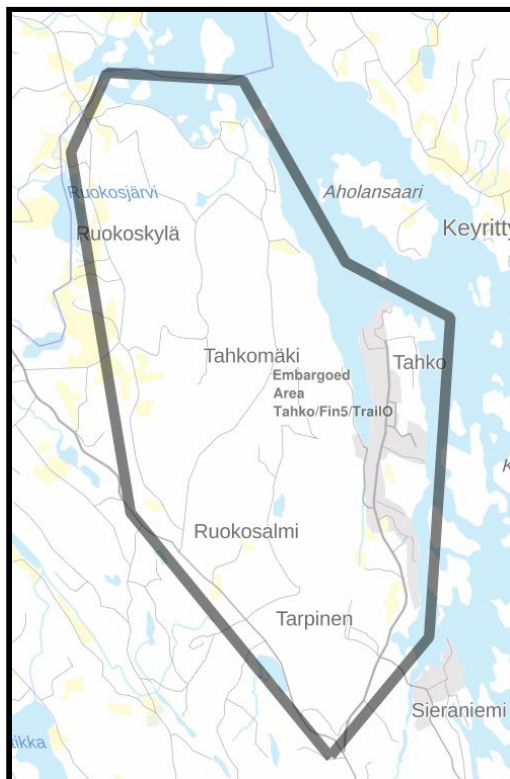
## Embargoed Areas



The first competition is “nearby” Rautavaara airfield. Area is also used during Fin5 Orienteering Week and is not allowed for any other activity. Start and finish is on Huuhkaja, about 10 km from airfield to north west.



WRE Tempo and PreO embargoed area is Kangas (aka. Halssi).



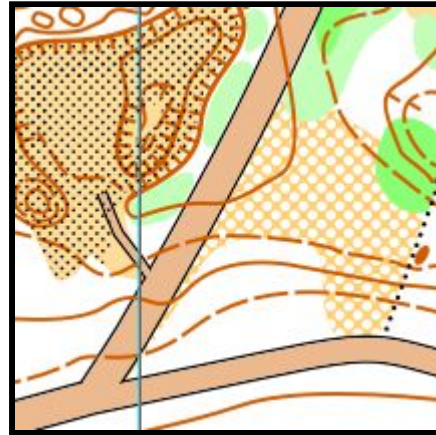
The fourth part is in Tahko Village. Embargoed area for Tahko Village is allowed to use during the week outside of orienteering activity. Fin5 sprint competition is in the same area earlier on the same day.

The fifth part is in Tahko. Embargoed area is somewhat used during orienteering week. However some of the area remains forbidden because of WOC 2023 or 25.

## Terrain

None of terrains is ever used to TrailO before. All maps are ISSOM and in scale 1:4000.

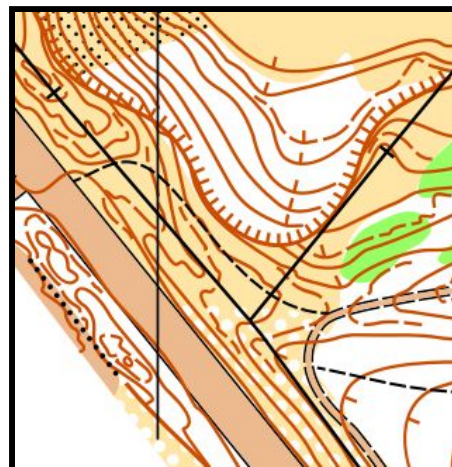
1. **Huuhkaja** at Lapinlahti. Good visibility and moderate height differences. Pine tree forest with gravel pit. Path is mostly on graveled road. Contour interval 2m.



2. **Halssi** at Nilsia, WRE Tempo. Good visibility and great height differences. Assistance for wheelchairs may needed. Pine tree forest with large depressions and gravel pits. Path is mostly on wide ski tracks and trails. Contour interval 2m.



3. **Halssi** at Nilsia, WRE PreO. Good visibility and great height differences. Assistance for wheelchairs may needed. Pine tree forest with large depressions and gravel pits. Path is mostly on wide ski tracks and trails. Contour interval 2m.



4. **Piazza** at Tahko Village. Urban environment. Path is mostly on paved or graveled road. Contour interval 2,5m.

For fair play we wish everyone is west side of Sääskiniementie before starts.

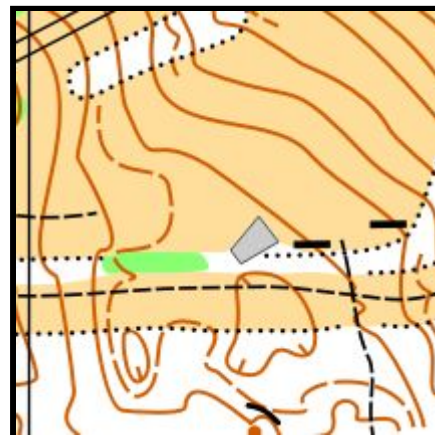


Symbol **420 Prominent vegetation feature** is 1 m to 1.5m a birch stump.



5. **Panorama 180** at Tahko. Great views and great height differences. Assistance for wheelchairs may needed. Mixed forest with ski slopes. Path is on graveled maintenance road of ski slopes. Contour interval 2m.

Up there is limited amount of parking so we wish that you match rides to fit in. More parking is downhill 600 m from competition center. Hill is steep.



### Zero Controls

We ensure that no flag is closer than 4m to any Zero controls.

### Classes

For whole week there is two classes available:

1. Competitive Elite (Open) class: E
2. Public (Open) class: A

Tempo and PreO in 16.7. in Elite class are WRE (world ranking event).

### Entries

Please follow a registration guide: <https://2019.fin5.fi/trailo/registration-for-trailo/?lang=en> or

in finnish: <https://2019.fin5.fi/trailo-ilmoittautuminen/>

Entry fee for Elite class, until 30.6.: 90 €/week or 22 €/competition.

Late entry fee for Elite class: 110€/week or 25 €/competition.

Week: <https://2019.fin5.fi/tuote/trailo-week-foreign-orientees/>

Daily: <https://2019.fin5.fi/tuote/trailo-daily-registration-for-competition-class/>

Fee for public class is the same as other public class competitions.

Daily: <https://2019.fin5.fi/tuote/trailo-daily-registration-for-open-public-class/>

### **Peculiarities**

We are developing new electronic punching system for TrailO called Otags. For sure we are going to use Otags in every other competition than WRE ones. We are requested to use it on WRE competition too. For now manual punching is used on WRE Competitions.

Total results are calculated from the best four results over the week. Result for a day is difference to winner in seconds. PreO results are converted to seconds in "relay style" rule: a 60 seconds penalty for a wrong answer. TempO results are used by as there are.

Every competition is also a solo-competition, even most of the event information is common for all competitions. So a course setter of another competition during the week are allowed to participate in every other competition out of their own. Their are also allowed to participate in the total competition.

### **VISA**

According to the current regulations, citizens of some countries must obtain a visa in order to enter Finland. Please check the following website for more information from Entering Finland:

<https://um.fi/entering-finland-and-travelling-abroad>

Request for visas should be submitted at your nearest Finnish Embassy. Please contact as soon as possible if you need invitation for visa application.