



**IOF WORLD
MTB ORIENTEERING
CHAMPIONSHIPS
&
JUNIOR WORLD
MTB ORIENTEERING
CHAMPIONSHIPS**

Kuortane
June 10 - 18, 2021

**BULLETIN
1**



CONTENTS

1.	Organizers	3
2.	Venues	3
3.	Preliminary Programme	5
4.	Participation and Classes	6
5.	Accommodation	6
6.	Opportunities for Training	8
7.	Embargoed Areas	8
8.	Rules	11
9.	Bulletins	11



1. ORGANIZERS

Kuortane Olympic Training Center

Opistotie 1
63100 Kuortane
Finland
Tel. +358-516 6111
E-mail: wmtboc2021@kuortane.com
Website: www.wmtboc2021.com, www.kuortane.com

Event Director

Ms Maarit Laitinen
E-mail: maarit.laitinen@kuortane.com
Tel. +358-6-516 6268

Competition Director

Mr Timo Laurila
E-mail: timo.laurila@outlook.com
Tel. +358-500 567 688

IOF Event Advisor

Mr Maxim Kapitonov (RUS)

National advisor

Mr Tuomo Marttinen

2. VENUES

Event Center/Athletes' Village

Kuortane Olympic Training Center
Opistotie 1, 63101 Kuortane
www.kuortane.com

The Championships' Event Center/Athletes' Village is located at Kuortane Sport Institute/Olympic Training Center, the same venue, where the 21st World University Orienteering Championship was successfully arranged in 2018. The Center offers high standard accommodation and catering services as well as meeting and sports facilities for all participants.



The Athletes' Village will be open from Thursday 10th till Friday 18th of June 2021.

For more information on Kuortane Sports Institute and its services and facilities, please visit: www.kuortane.com. Our Reception will also help you, if you need further information on available services.

Contact information:

Kuortane Olympic Training Center/Kuortane Sports Institute

Opistotie 1 (P.O. Box 49)

63100 Kuortane

tel. +358-6-516 6111

e-mail: reception@kuortane.com

www.kuortane.com

Competition Venues

Kuortane is a small, lively municipality in Southern Ostrobothnia with an area of 485 km² and a population of about 3.500. Kuortane is set in a peaceful countryside environment on an idyllic lakeside. Kuortane is proven to be one of the safest surroundings in Finland (survey in 2015). The village is best known for the Sports Institute and the Sports High School.

Alajärvi is a town and municipality located in the South Ostrobothnia region. The town has a population of 9,752 and it covers an area of 1,056.74 km².

Seinäjoki is the centre of South Ostrobothnia and one of the fastest growing urban areas in Finland. Seinäjoki's population is 63.000 and it covers an area of 1.469,19 km². Formed by nine municipalities, the urban area of Seinäjoki has a population of 150,000.

Seinäjoki offers high-quality education from comprehensive school to university level as well as good employment opportunities and, as Finland's sixth largest market area, very competitive and attractive commercial services.

Seinäjoki is well known for its unique administrative and cultural centre, The Aalto Centre, designed by the architect and academic Alvar Aalto, as well as for its summer events e.g. Provinssirock, Solar Sound, Tangomarkkinat, and Vauhtiajot.



Kuortane



Alajärvi



Seinäjoki

General map of the region



3. PRELIMINARY PROGRAMME

Date	
Thursday 10 th June	Arrivals/Model Events
Friday 11 th June	Arrivals/Model Events/Opening Ceremony
Saturday 12 th June	Mass start in Kuortane
Sunday 13 th June	Sprint in Seinäjoki
Monday 14 th June	Middle distance in Alajärvi
Tuesday 15 th June	Day off
Wednesday 16 th June	Long distance in Kuortane
Thursday 17 th June	Relay in Seinäjoki/Closing Ceremony
Friday 18 th June	Departures

The programme is subject to change; the final programme will be published in Bulletin no. 2.

All the competitions will take place within about 30 minutes' drive by car from the Event Centre.

4. PARTICIPATION & CLASSES

Competitors participate at their own risk. Third party insurance and personal injury insurance is mandatory and shall be the responsibility of their federation or themselves, according to national regulations.

World MTBO Championships

- There is one class for women and one for men. There are no age restrictions.
- All competitors represent a Federation. Each Federation may enter a team of an unlimited number of competitors and a number of team officials. The organizer can set a limit on the maximum number of officials per team, in accordance with the available facilities. This maximum number shall be the same for each team and shall be at least 5.
- In the mass start, middle distance and the sprint every federation may enter up to 6 women and 6 men and, in addition, the current World Champions for the distance may be entered by their federation(s) provided they are members of the federation's team.
- In the relay, each federation may enter 2 women's teams and 2 men's teams, each consisting of 3 team members. Incomplete teams and teams with cyclists from more than one federation are not allowed. Under no circumstances may persons other than entered competitors participate in the competition.
- For the long distance, the number of competitors who may enter is limited. The qualification rules are published as Special Rules decided by IOF Council and published at the latest by 31st January in the year of the competition.
- A competitor must have a valid IOF Athlete License.

Junior MTBO Championships

- There is one class for women and one for men. Only competitors who are IOF MTBO entitled to compete in the classes W20 or M20 may participate.
- All competitors represent a Federation. Each Federation may enter a team of an unlimited number of competitors and a number of team officials. The organiser can set a limit on the maximum number of officials per team, in accordance with the available facilities. This maximum number shall be the same for each team and shall be at least 5.
- In each competition every federation may enter up to 6 women and 6 men.
- In the relay, each federation may enter 2 women's teams and 2 men's teams, each consisting of 3 team members. Incomplete teams and teams with cyclists from more than one Federation are not allowed. Under no circumstances may persons other than entered competitors participate in the competition.

5. ACCOMMODATION

Kuortane Olympic Training Center offers different levels of accommodation for single individuals as well as groups and teams. All of our apartments are located in the immediate vicinity of the training facilities on a scenery lake side at Lake Kuortane.

4 stars Sports Hotel

All the apartments are comfortably furnished, and they have a sauna, bathroom, fully equipped kitchen or kitchen corner, air conditioning, washing machine, drying cupboard, television, DVD player and Broadband Internet Access. Some of the apartments also have a glazed balcony.

There are four different sizes of the apartments:

1. Studio for four persons; two beds, sofa bed (34 m²)
2. 1-bedroom unit for four persons; two beds, two sofa beds (46,5 m²)
3. 2-bedroom unit for six persons; four beds, two sofa beds (58,5 m²)
4. 3-bedroom unit for eight persons; four beds, one double bed, two sofa beds (76 m²)



Resorts and dormitory apartments and rooms

Other accommodation alternatives are apartments, single, double and dormitory rooms. These rooms have their own bathrooms or they are shared with another room. Some of the rooms also have their own kitchen and sauna.



We also offer more modest level accommodation for e.g. youth groups with shared bathrooms and showers.



For more information on accommodation, please visit: <https://www.kuortane.com/accommodation>

Accommodation reservations: Ms Riina Salo, e-mail: riina.salo@kuortane.com

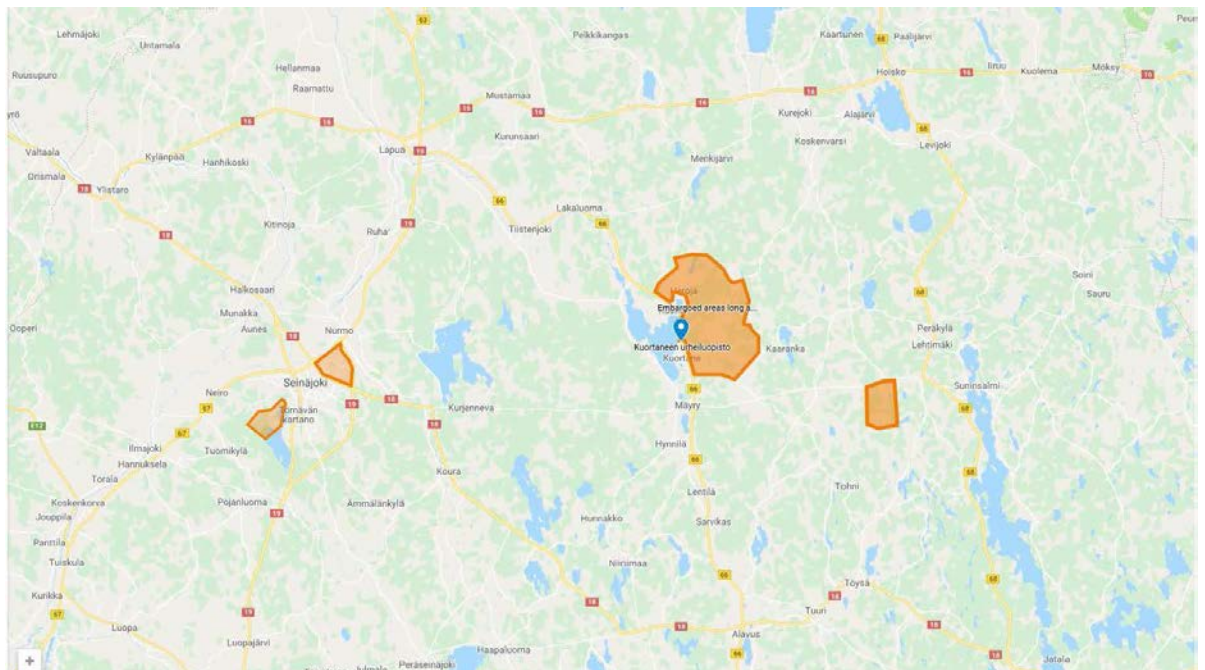
6. OPPORTUNITIES FOR TRAINING

13 – 14 July 2019	Cycli XCO and XCM (without map)	Seinäjoki
9 – 13 September 2020	World Masters MTB Orienteering Championships 2020	Asikkala
10 – 12 September 2020	MTB Orienteering World Cup Round 3	Asikkala

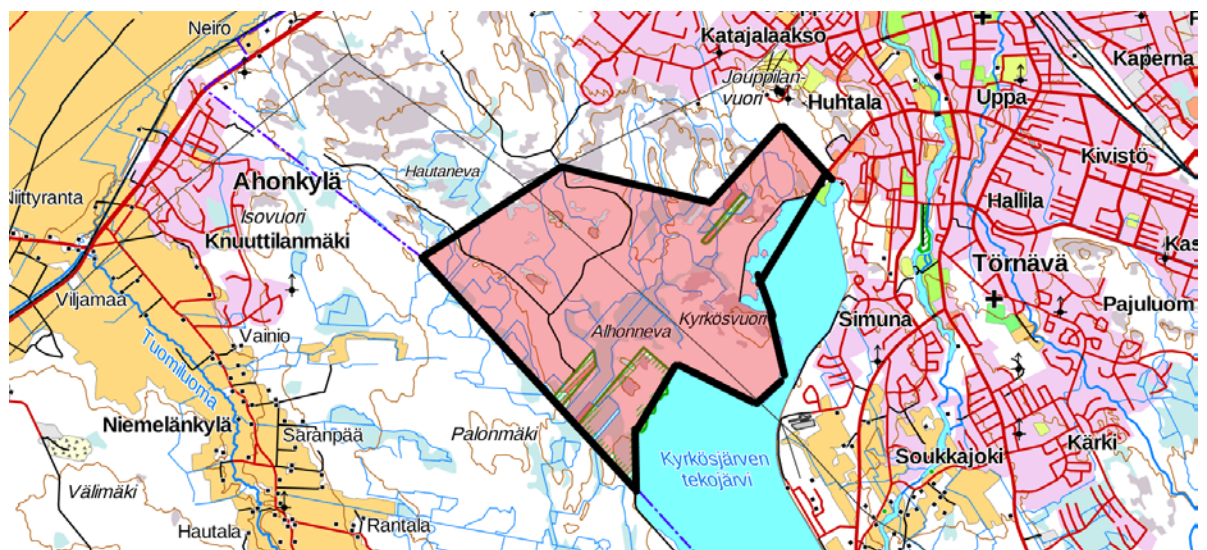
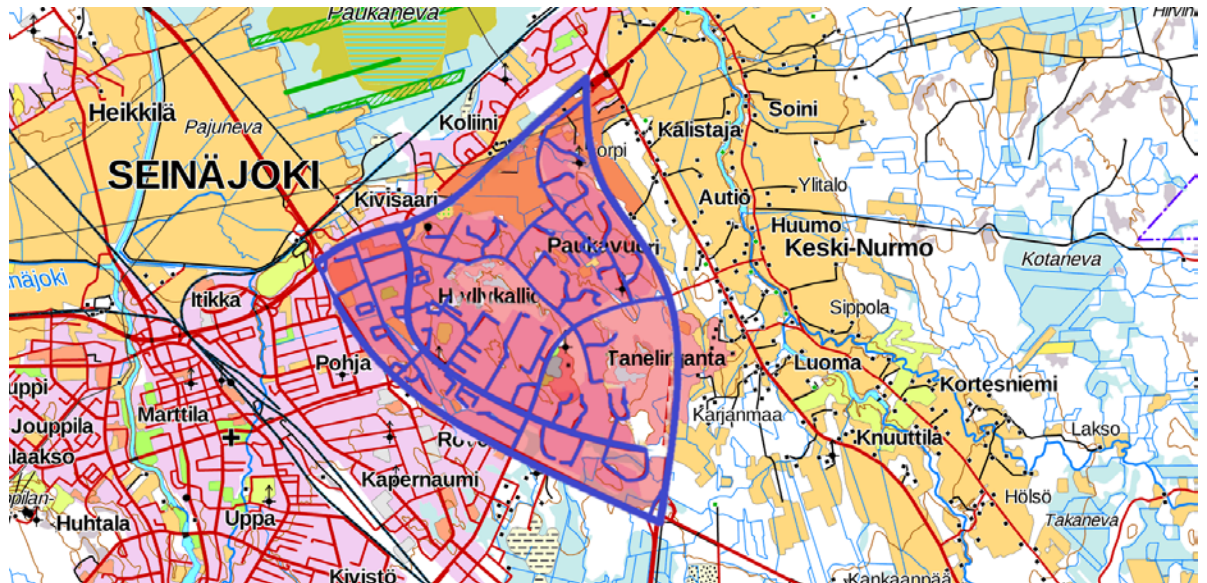
7. EMBARGOED AREAS

The embargo remains in place until the end of the WMTBOC and JWMTBOC in June 2021. The areas marked on the map are embargoed for all orienteering activities, unless specifically permitted by the organizers. The embargoed areas are out of bounds for all potential participants and team members, including competitors, team coaches, manager or anyone associated the team/individual.

Obviously, any orienteering or MTBO activity is forbidden and it is strictly forbidden to ride a bike. Any permission for access into embargoed areas must be requested from the organizers, if needed and before access. This includes also if there are any MTB events taking place in the embargoed areas and potential competitors wish to participate. The embargo includes the use of drones in or about the terrain.



Maps of Embargoed Areas/Seinäjoki

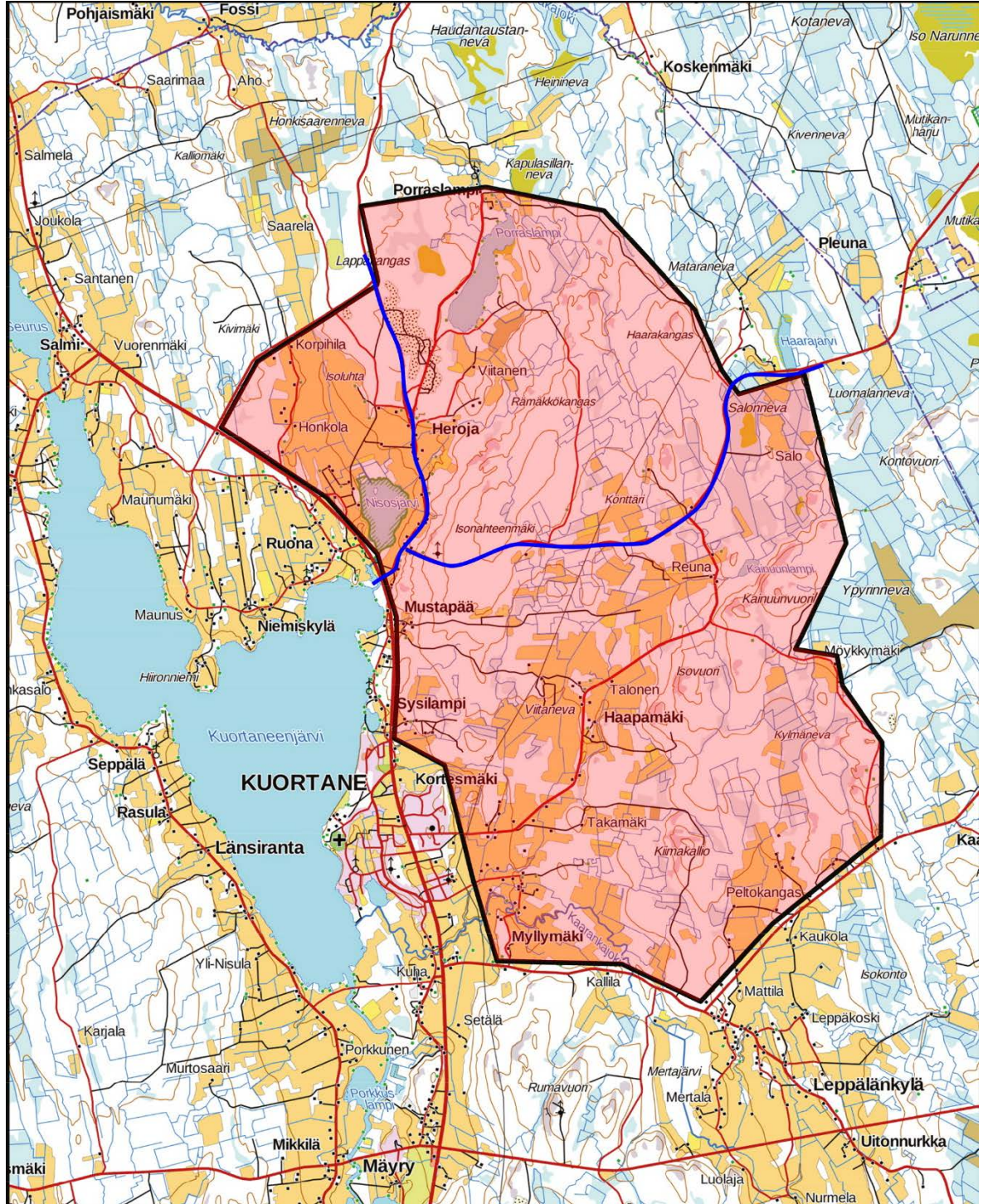


World Mountain Bike Orienteering Championships 2021 Embargoed areas according to IOF MTB Orienteering rules 2017, Appendix 8.

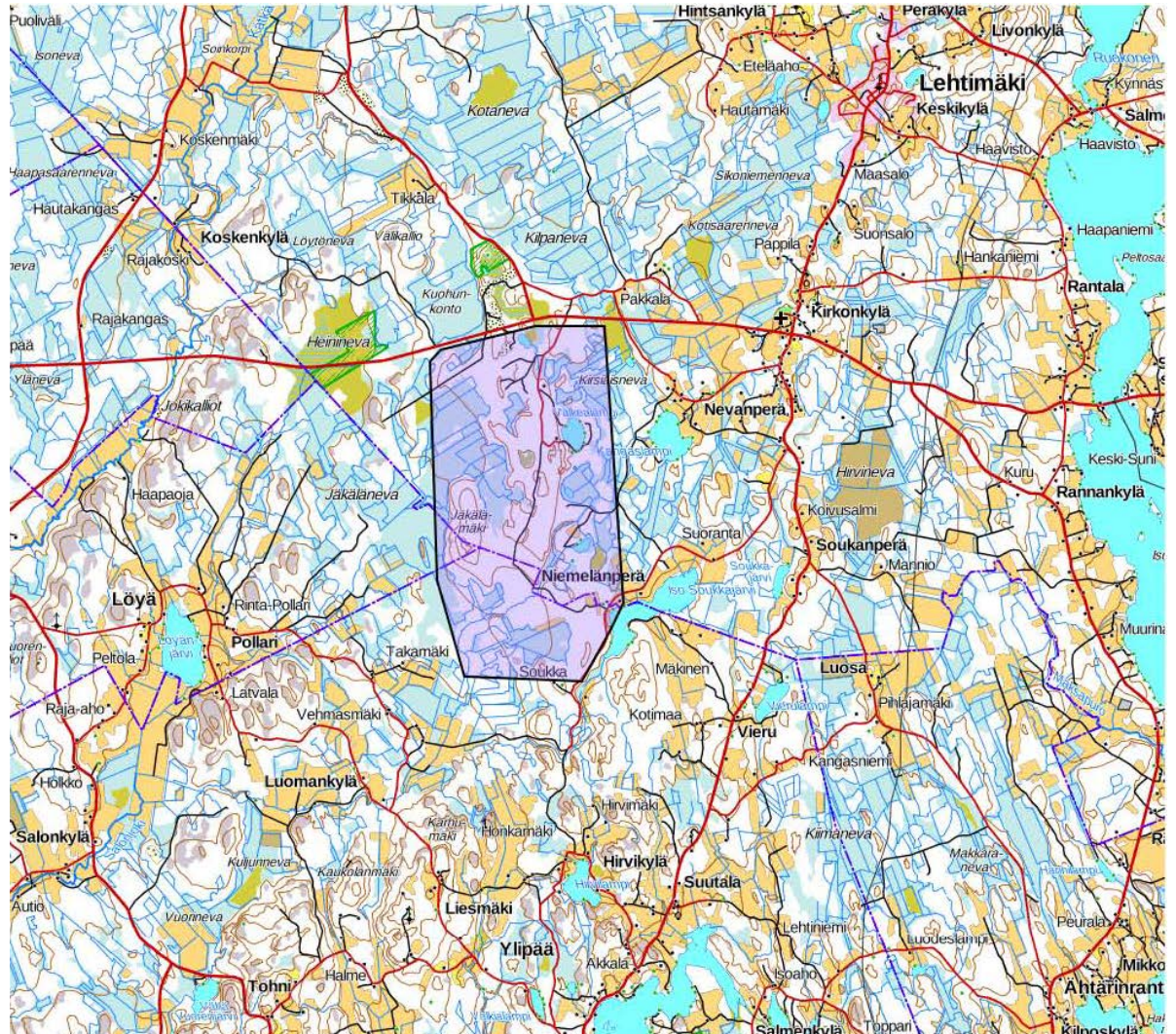
The embargo is placed from 12th June 2019 to 17th June 2021.

1. Any activity in embargo area is forbidden.
2. The roads marked in blue colour are open to travel through/along.
3. The use of drones to film in or above an embargo is strictly forbidden.
4. Cycli XCO 13th July 2019 (<https://www.rideep.fi/kilpailut/cycli-xco-2019/>) and Cycli XCM 14th July 2019 (<https://www.rideep.fi/kilpailut/cycli-xcm-2019/>) are held partly in embargoed areas. Athletes may participate in these events but must remain solely on the race track and event arena and only enter the embargoed area on race days.
5. Any permission for access into embargoed areas must be requested from the organizer's, if needed and before access.

Maps of Embargoed Areas/Kuortane



Map of Embargoed Area/Alajärvi



8. RULES All events will be organized in accordance with the valid Competition Rules of IOF MTB Orienteering Events, please visit: <https://orienteering.sport/mtbo/competition-rules/>. The Competition rules are normally updated once a year.

9. BULLETINS Next Bulletins will be published as follows:

No.	Time
2	May 2020
3	April 2021
4	June 2021