

Bulletin 02

World Masters Ski Orienteering Championships



English



WINTER INNS' WORLD BRUCK MASTERS GAMES 2020

10. - 19. 01. 2020

www.innsbruck2020.com



**INNS'
BRUCK**

Seefeld

Tirol



INTERNATIONAL
MASTERS
GAMES
ASSOCIATION

RECOGNISED
BY THE IOC



Bulletin 2

Winter World Master Games 2020 World Masters Ski Orienteering Championships 2020

1 Preamble:

For the first time the World Masters Ski Orienteering Championships will be held together with the Winter World Masters Games 2020 (WWMG).

The Winter World Masters Games 2020 will be the biggest winter - multi sports event for 30+ year olds. 3000+ athletes are estimated to take part in one of 12 different sports. Amateur athletes get the unique chance, to compete together and rub shoulders with ex-professionals. The WWMG promote friendship between athletes through fair competition, social activities and cultural programs.

2 Organizers

[Orienteering Innsbruck Imst](#)

Event director: Hans Georg Gratzner
Competition secretary: Adrian Wickert
IOF Event Advisor: Viktor Kirianov
National Controller: Wolfgang Pötsch

Address: Hans Georg Gratzner
Arzlerstraße 48a
A-6020 Innsbruck
Tel: +43 664 5634001

Website www.innsbruck2020.com/
Mail adrian.wickert@gmx.at

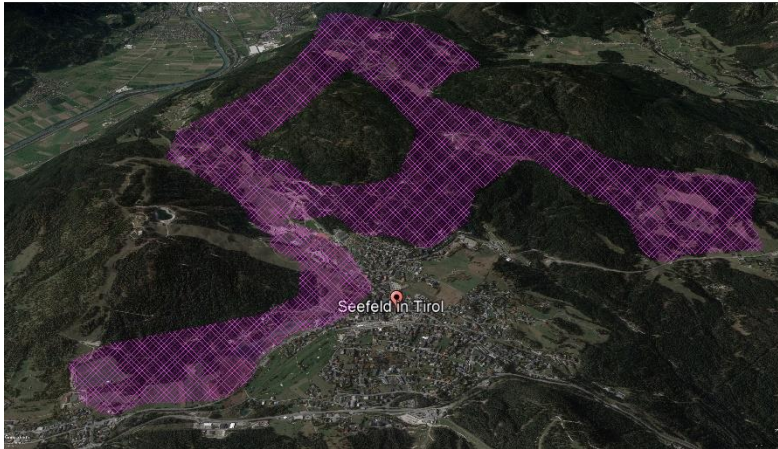
3 Venue

The Competition Center is planned at the Casino Arena in Seefeld.
(Möserer Straße 632 6100 Seefeld/Tyrol Austria)

The distance from Innsbruck International Airport to Seefeld is approximately 30km by car or Train. The nearest railway station is in Seefeld.

4 Embargoed Area

The Seefeld Plateau between 15th August 2019 and 20th January 2020
Exception Summer Roller Track at the casino Arena until 30th of October



Because of the possibility to also compete in Cross Country or Biathlon Events. There is an exception for the embargoed area. From 11th January on the official race courses for the Cross Country and Biathlon events are open for participants of WMSOC. The detailed map will be published in Bulletin 4

5 Dates and types of the competition

The Competition will be held between the 14th and 19th January.
The Exact Dates will be published in June
Competitions:

- Model Event
- Sprint
- Middle
- Long

6 Classes and Participation restrictions

- | | | |
|---------|-----------|------------|
| • M/W30 | 1990-1986 | only WMMG |
| • M/W35 | 1985-1981 | WMMG/WMSOC |
| • M/W40 | 1980-1976 | WMMG/WMSOC |
| • M/W45 | 1975-1971 | WMMG/WMSOC |
| • M/W50 | 1970-1966 | WMMG/WMSOC |
| • M/W55 | 1965-1961 | WMMG/WMSOC |
| • M/W60 | 1960-1956 | WMMG/WMSOC |
| • M/W65 | 1955-1951 | WMMG/WMSOC |
| • M/W70 | 1950-1946 | WMMG/WMSOC |
| • M/W75 | 1945-1941 | WMMG/WMSOC |
| • M/W80 | 1940-1936 | WMMG/WMSOC |
| • M/W85 | 1935-1931 | WMMG/WMSOC |
| • M/W90 | 1930-1926 | WMMG/WMSOC |

7 Entry fees/Deadline

Entry fee 180€ per person
Entry deadline 01.11.2019
Late Entry deadline 15.12.2019
Late Entry fee 210€ per person

The registration fee includes the following benefits:

- Participation in the WWMG 2020
- Participation in the WMSOC 2020
- Participation in the official opening ceremony
- Free use of public transport in and around Innsbruck
- Starter package with attractive goodies
- Supporting program
- Official certificate of participation (digital)
- Award ceremony and medals for the first 3 of each class
- Results on the Internet
- Participation in the closing ceremony

8 Timing

Sport Ident Air+ will be used.
SIAC Cards can be rented for 10€ for all competitions.
A deposit of 100€ will be charged for every rent chip.

9 Registration/Payment

Registration is Possible via [Eventor](#)

Please instruct your bank to forward the payment orders to:

Bank HYPO TYROL BANK

Beneficiary DI Gratzner Hans Georg, Arzlerstrasse 48a, A-6020 Innsbruck

BIC HYPTAT22

IBAN AT47 5700 0300 5536 9051

Note the bank transfer must be free of charge for the organizers

The payment has to be on our account at latest two weeks after the entry otherwise the entry will be redrawn.

It is also possible to register for another sport at the WMMG. First you should register via Eventor for the ski o competitions. After we receive your payment on our bank account you could register to another sport via [Multisportcheck](#). Please enter your IOF ID instead of the registration ID.

10 Terrain Type / Opportunities for Training

Typical alpine valley with forest, marches and open fields. The terrain is situated between 1200m and 1400m.



- On 11th and 12th January a National Ski O Event will be held in Kaltenbrunn near Garmisch-Partenkirchen (GER)
About 30km away from Seefeld
Information: <http://www.ski-orienteeing.de/>
- Also, on the 11th of January the "Kaiser Max Lauf" a Visma Ski Classics Event will be held in Seefeld
Information <http://kaisermaximilianlauf.com>
- There are similar terrains with Ski Orienteering Maps in Imst and Wipptal valley.
For more information please contact office@kompass-innsbruck.at

11 Visas

You can find a list of countries which need a Visa for Austria here:
http://www.bmi.gv.at/cms/BMI_Fremdenpolizei/visumspflichten/start.aspx

12 How to get to Seefeld

By plane: Innsbruck Airport or Munich Airport
By train: local trains from Munich and Innsbruck
By car: From Innsbruck via Zirl/Telfs or from Munich via Garmisch-Partenkirchen

13 Accommodation

A lot of different types of accommodations are offered by the local tourist board.
For further questions according to the accommodation, feel free to contact our partner Eurotours
office@eurotours.at
<https://www.eurotours.at/en/>