



METROPOLITAN
Sport Club
Bucharest



to participate at The Great Orienteering Event:

CARPATHIAN O - TROPHY

NATIONAL Team Orienteering Championship

NATIONAL Urban Sprint Ch. St. 4 & Cornu Cup & OK Silva Cup

COMARNIC City Cup – III Edition

2 World Ranking Events

CORNU, on 2019, May 31,

COMARNIC, *Gurguiața Side*, on 2019, June 1st-2nd

BULLETIN 3



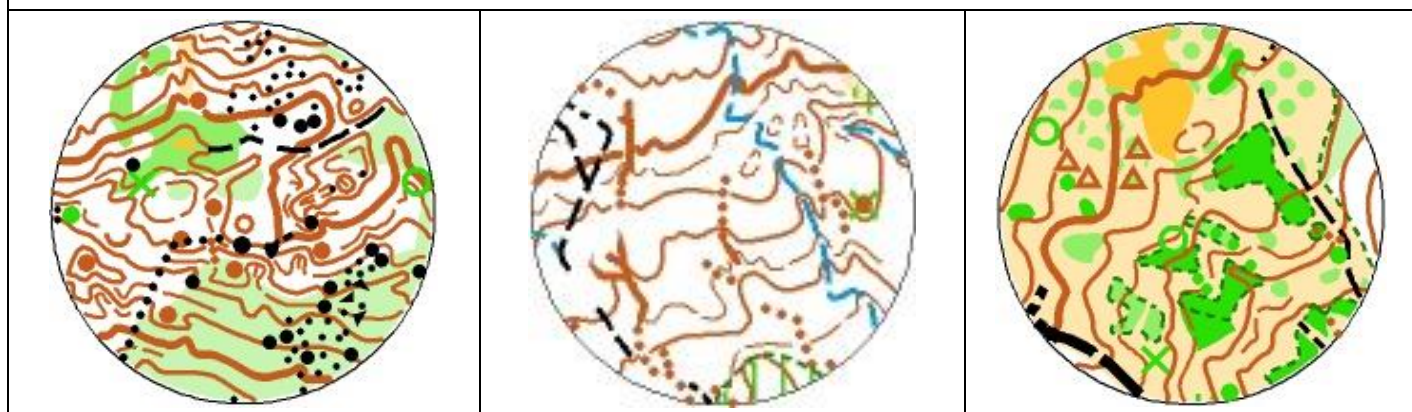
XLAB SOLUTIONS

Pursuing the Excellence

GHM TEAM

TRUE ATTITUDE
@decorporate®

New samples from the competition area maps - LD and MD stages



*They keep
ready
to reward
your
efforts*



THE CONTROL OF THE RACES

After the control of the races, made by the control team („The Two Exacting”), a reduction of the lengths of the races and of the number of the controls was demanded, in order to respect the regulations for the winning times.

We reproduce below the new technical data, modified in relation to the Bulletin 2.

Also, there are detailed the technical data for the Urban Sprint stage.

TECHNICAL DATA - (there are changes in relation to the Bulletin 2)

Categoria	ECN SU	LD	MD
W12	-	2310 m / 10 PC	1990 m / 13 PC
W14	(D) 1700 m /14 PC	2870 m / 14 PC	2080 m / 13 PC
W16	-	4090 m / 18 PC	2760 m / 14 PC
W18	(B) 2000 m /15 PC	5440 m / 19 PC	3480 m / 17 PC
W20	-	5440 m / 19 PC	3480 m / 17 PC
W21E	(B) 2000 m /15 PC	7080 m / 23 PC	3870 m / 19 PC
W35	(B) 2000 m /15 PC	5440 m / 19 PC	3480 m / 17 PC
W40	-	4770 m / 17 PC	3220 m / 15 PC
W45	(D) 1700 m /14 PC	4770 m / 17 PC	3220 m / 15 PC
W50	-	4090 m / 18 PC	2760 m / 14 PC
W55	(D) 1700 m /14 PC	3140 m / 10 PC	2080 m / 10 PC
W60	-	2090 m / 11 PC	1740 m / 10 PC
W65	(D) 1700 m /14 PC	2090 m / 11 PC	1740 m / 10 PC
W75	-	2090 m / 11 PC	1430 m / 8 PC
M12	-	2310 m / 10 PC	1990 m / 13 PC
M14	(C) 2000 m /13 PC	2870 m / 14 PC	2080 m / 13 PC
M16	-	4770 m / 17 PC	3220 m / 15 PC
M18	(A) 2300 m /16 PC	7080 m / 23 PC	3870 m / 19 PC
M20	-	7080 m / 23 PC	3870 m / 19 PC
M21E	(A) 2300 m /16 PC	8950 m / 28 PC	4480 m / 22 PC
M35	(A) 2300 m /16 PC	7080 m / 23 PC	3870 m / 19 PC
M40	-	5440 m / 19 PC	3480 m / 17 PC
M45	(C) 2000 m /13 PC	5440 m / 19 PC	3480 m / 17 PC
M50	-	4770 m / 17 PC	3220 m / 15 PC
M55	(C) 2000 m /13 PC	4770 m / 17 PC	3220 m / 15 PC
M60	-	4090 m / 18 PC	2760 m / 14 PC
M65	(C) 2000 m /13 PC	3140 m / 10 PC	2080 m / 10 PC
M70	-	2090 m / 11 PC	1740 m / 10 PC
M80	-	1730 m / 9 PC	1430 m / 8 PC
Op. Th.	(B) 2000 m /15 PC	3140 m / 10 PC	2080 m / 10 PC
Open	(C) 2000 m /13 PC	2240 m / 11 PC	1890 m / 13 PC
Op. Fam.	(D) 1700 m /14 PC	2240 m / 11 PC	1890 m / 13 PC
Op. W _{≤15}	-	1920 m / 9 PC	1760 m / 11 PC
Op. M _{≤15}	-	2240 m /10 PC	1920 m / 11 PC
Op. W _{≤19}	-	1920 m / 9 PC	1760 m / 11 PC
Op. M _{≤19}	-	2370 m / 12 PC	1990 m / 13 PC

THE ACCESS to THE EVENT CENTER, PARKING and START – FINISH

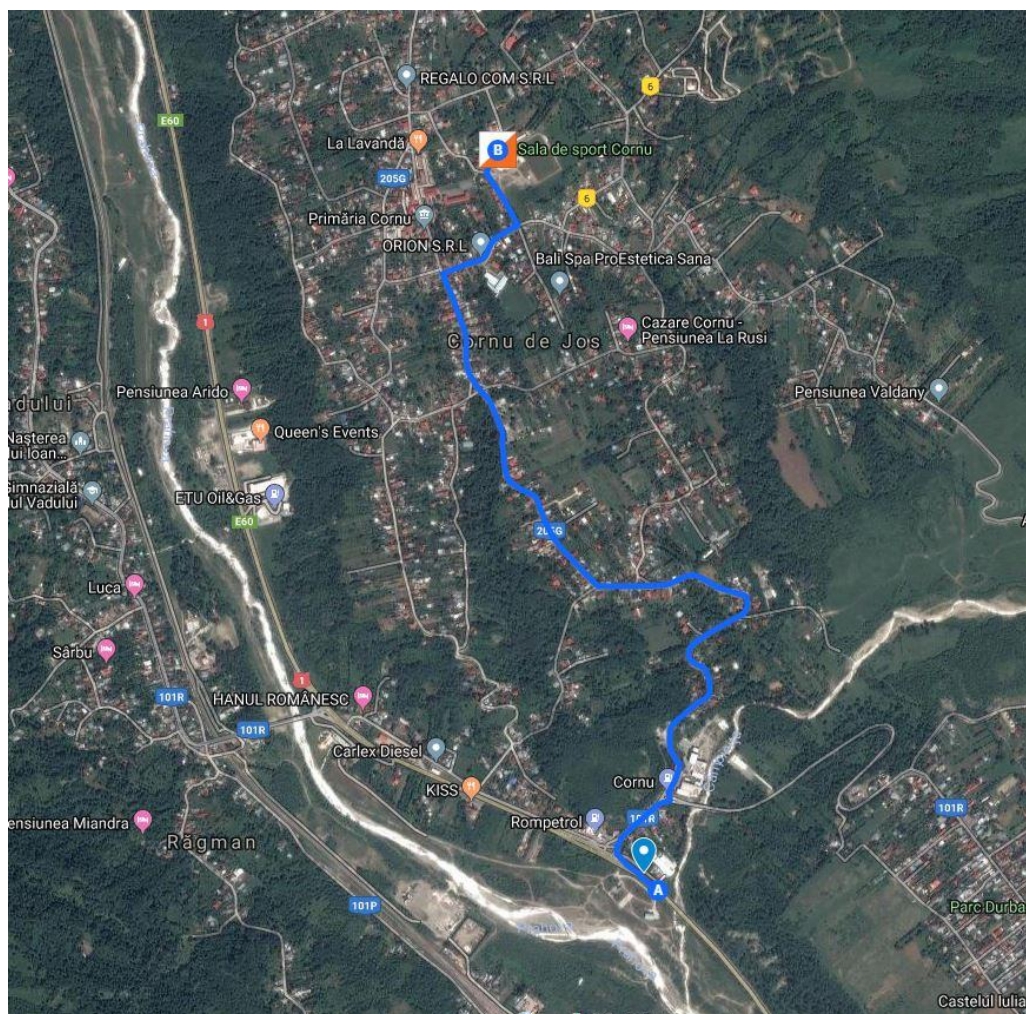
Pay attention please, to the modified driving time from the road DN1 to the Event Center for LD and MD.

URBAN SPRINT Stage, May, 31

The Event Center is located at the Sport Hall from Cornu.

The access to the Event Center, respectively at the Parking, will be on an 3.1 km asphalted road (5 min, by car, without traffic) wich will be marked beginenng at the jonction for Cornu from National Road 1 (DN 1), in accordance with the enclosed map. The road junction on DN1 it is at **80 km from Otopeni International Airport.**

The Start corridor will be marked beginenng from the Event Center, where it will be **the quarantine area.** The Finish will be in the near of Event Center.



The access road from DN1 to the Event Center and Parking
(45.15797, 25.70548), for Urban Sprint Stage, on May, 31.
3,1 km (5 min, by car, without traffic)

LD and MD Stages, June, 1st and 2nd

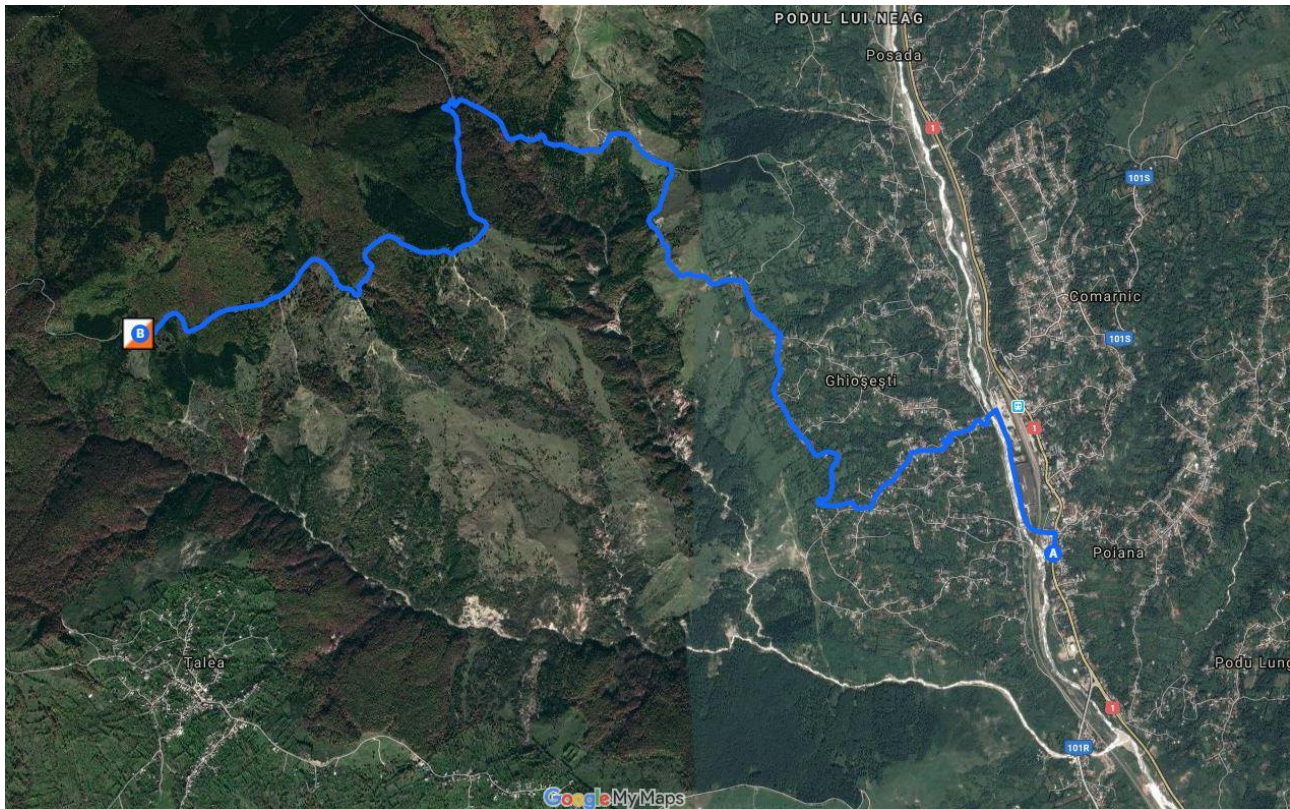
Event Center is located on the forest road from Gurguiața Side.

The access to the Event Center, respectively at the Parking, will be on a marked road beginning from the National Road 1 (DN 1), in accordance with the enclosed map. From DN1 to the Event Center there are a 12 km distance, from that the first 6 km are on an asphalted road. To cover this distance by car, it takes about **35 - 45 min.**

The road bifurcation on DN1 it is at **90 km from Otopeni International Airport.**

The Start corridors will be marked beginning from the Event Center for the both stages. **The Finish** will be in the near of Event Center.

Warm Up Map and **Model Event (ME) Area** comprises the area between the Event Center and the Start point. On the map you will see the Event Center, the Start point, the Start corridor and the controls placed on specific landmarks.



The access road from DN1 to the Event Center and Parking (45.24659, 25.55921), for LD and MD stages, on June, 1st and 2nd.
12 km (**35 - 45 min**, by car)

Accommodation: Hotels in Comarnic, Cornu, Breaza, Campina, Sinaia;

Lunch: You can take the lunch at Event Center, on June, 1st and 2nd. The locals offer to you, surcharge, ***traditional domestic dishes.***

RUNNERS PARTICIPATE ON THEIR OWN RESPONSIBILITY