



METROPOLITAN
Sport Club
Bucharest



to participate at The Great Orienteering Event:

CARPATHIAN O - TROPHY

NATIONAL Team Orienteering Championship

NATIONAL Urban Sprint Ch. St. 4 & Cornu Cup & OK Silva Cup

COMARNIC City Cup – III Edition

2 World Ranking Events

CORNU, on 2019, May 31,

COMARNIC, *Gurguiața Side*, on 2019, June 1st-2nd

BULLETIN 2

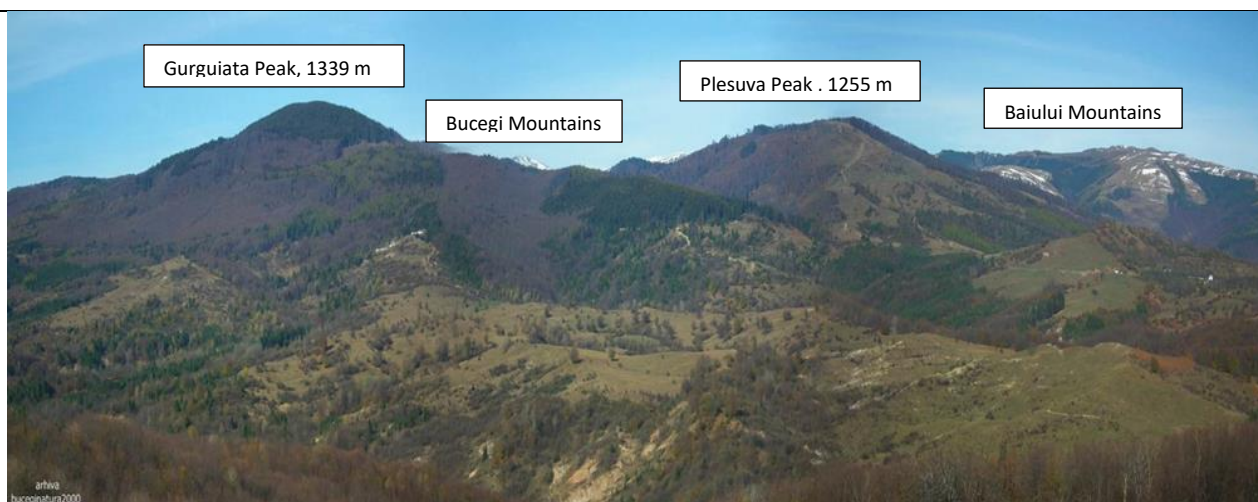


XLAB SOLUTIONS

Pursuing the Excellence

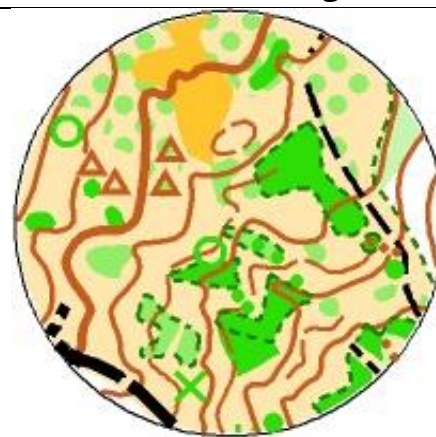
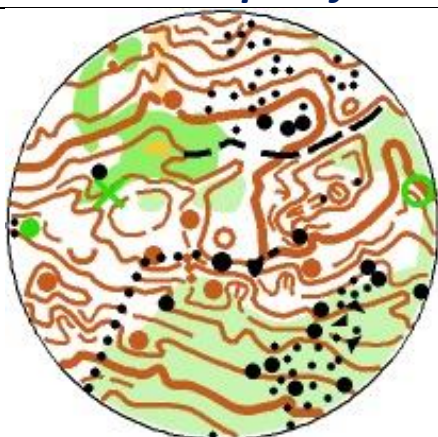
GHM TEAM

TRUE ATTITUDE
@decorporate®



View towards the competition area, from Ghiosesti hill

New samples from the competition area maps - LD and MD stages



We recall the words of Istvan Foldi (mapping 2018 – 2019):



„The area is enviable. Mountainous terrain with a strong look of hills shaped by landslides, specific to the hills from the South of the Carpathians of Curvature. Physically and technically demanding terrain covered by diverse vegetation; from beautiful mixed forest with good visibility and runnability to large areas of mountainous open and semi open pastures and parts of thick vegetation. The area consists of undulating slopes, offering good route choice possibilities, exchanging with very detailed and technically challenging landslide micro relief, sometimes with rocky walls cliffs or boulders. Moderately developed track network, large sections with no paths.”

Didi Rosca(update mapping 2019)

It is to be expected a high orienteering technical level and the diversity of the area as specific orienteering. Each section will delight you differently. Those who are passionate about orienteering will have a remarkable experience.



Daniel Stroescu (U.Sprint course planner):

Our hosts will make available for us a modern sport hall and a town with beautiful streets, little parks, houses and gardens well cared of. The courses, ease at the first look, will put a series of technical problems though. These „difficulties” together with the alternating short legs which require special attention and high speed running long legs, will assure you the joy of orienteering in the beautiful environment of Corbu town.



TECHNICAL DATA - We have prepared for you the following courses:

Classes	LD	MD
W12	2300 m / 13 PC	1850 m / 14 PC
W14	3010 m / 16 PC	2050 m / 13 PC
W16	4260 m / 17 PC	3030 m / 16 PC
W18	5760 m / 21 PC	3570 m / 18 PC
W20	5760 m / 21 PC	3570 m / 18 PC
W21E	7010 m / 25 PC	4170 m / 21 PC
W35	5760 m / 21 PC	3570 m / 18 PC
W40	4900 m / 19 PC	3290 m / 17 PC
W45	4900 m / 19 PC	3290 m / 17 PC
W50	4260 m / 17 PC	3030 m / 16 PC
W55	4260 m / 17 PC	3030 m / 16 PC
W60	3690 m / 15 PC	2140 m / 13 PC
W65	3690 m / 15 PC	2140 m / 13 PC
W70+	2020 m / 12 PC	1800 m / 11 PC
M12	2300 m / 13 PC	1850 m / 14 PC
M14	3010 m / 16 PC	2050 m / 13 PC
M16	4900 m / 19 PC	3290 m / 17 PC
M18	7010 m / 25 PC	4170 m / 21 PC
M20	7010 m / 25 PC	4170 m / 21 PC
M21E	9040 m / 28 PC	4860 m / 26 PC
M35	7010 m / 25 PC	4170 m / 21 PC
M40	5760 m / 21 PC	3570 m / 18 PC
M45	5760 m / 21 PC	3570 m / 18 PC
M50	4900 m / 19 PC	3290 m / 17 PC
M55	4900 m / 19 PC	3290 m / 17 PC
M60	4260 m / 17 PC	3030 m / 16 PC
M65	4260 m / 17 PC	3030 m / 16 PC
M70	3690 m / 15 PC	2140 m / 13 PC
M75+	2020 m / 12 PC	1800 m / 11 PC
Op.Th.1	4260 m / 17 PC	3030 m / 16 PC
Op.Th.2	3690 m / 15 PC	2140 m / 13 PC
Open	2270 m / 12 PC	1840 m / 13 PC
Op.Fam.	2270 m / 12 PC	1840 m / 13 PC
Op _≤ 15	2090 m / 11 PC	1870 m / 12 PC
Op _≤ 19	2340 m / 11 PC	1930 m / 13 PC

At **Urban Sprint stage**, the lengths of the courses fit between 1,5 Km and 2,5 km, corresponding to the competition classes.

THE ACCESS to THE EVENT CENTER, PARKING and START – FINISH

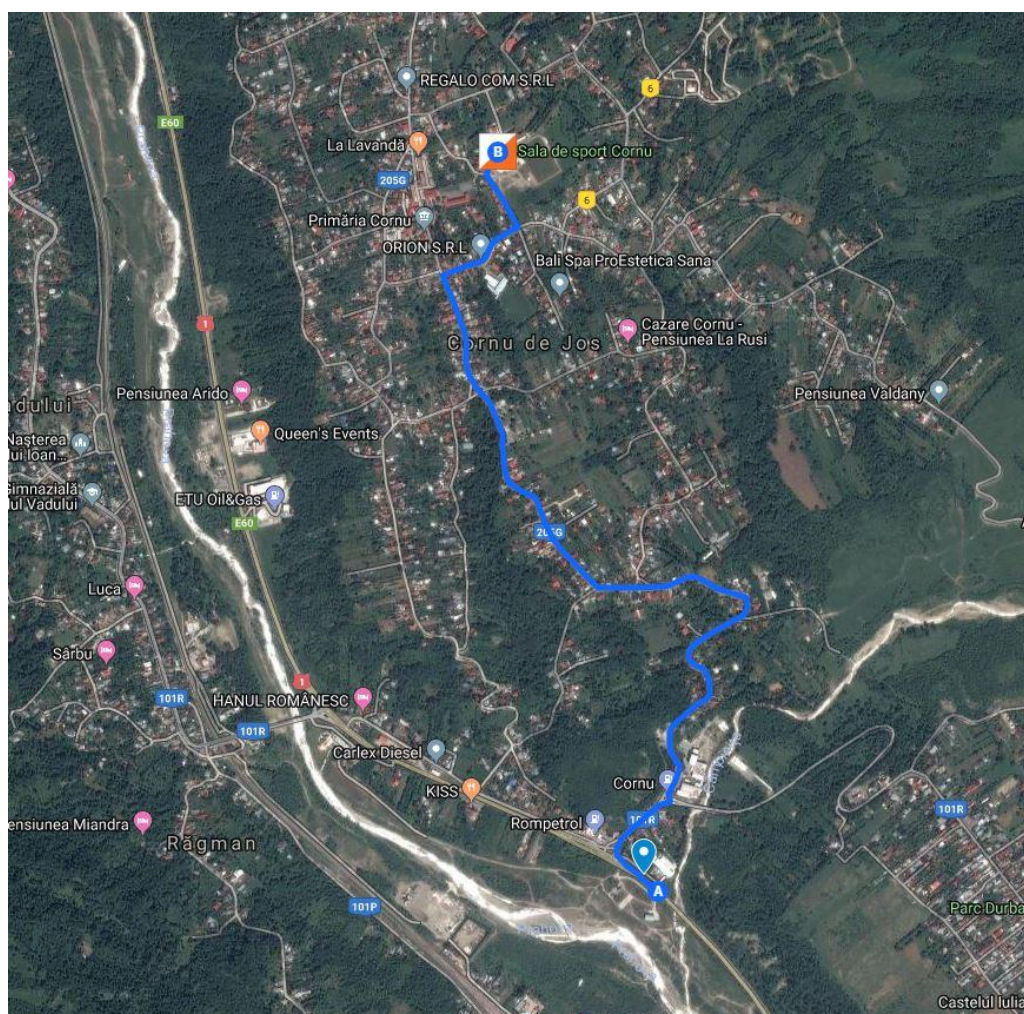
As in Bulletin 1, the only added paragraph, refers to the driving time from the road DN1 to the Event Center for LD and MD.

URBAN SPRINT Stage, May, 31

The Event Center is located at the Sport Hall from Cornu.

The access to the Event Center, respectively at the Parking, will be on an 3.1 km asphalted road (5 min, by car, without traffic) wich will be marked begining at the jonction for Cornu from National Road 1 (DN 1), in accordance with the enclosed map. The road junction on DN1 it is at **80 km from Otopeni International Airport.**

The Start corridor will be marked begining from the Event Center, where it will be **the quarantine area.** The Finish will be in the near of Event Center.



The access road from DN1 to the Event Center and Parking
(45.15797, 25.70548), for Urban Sprint Stage, on May, 31.
3,1 km (5 min, by car, without traffic)

LD and MD Stages, June, 1st and 2nd

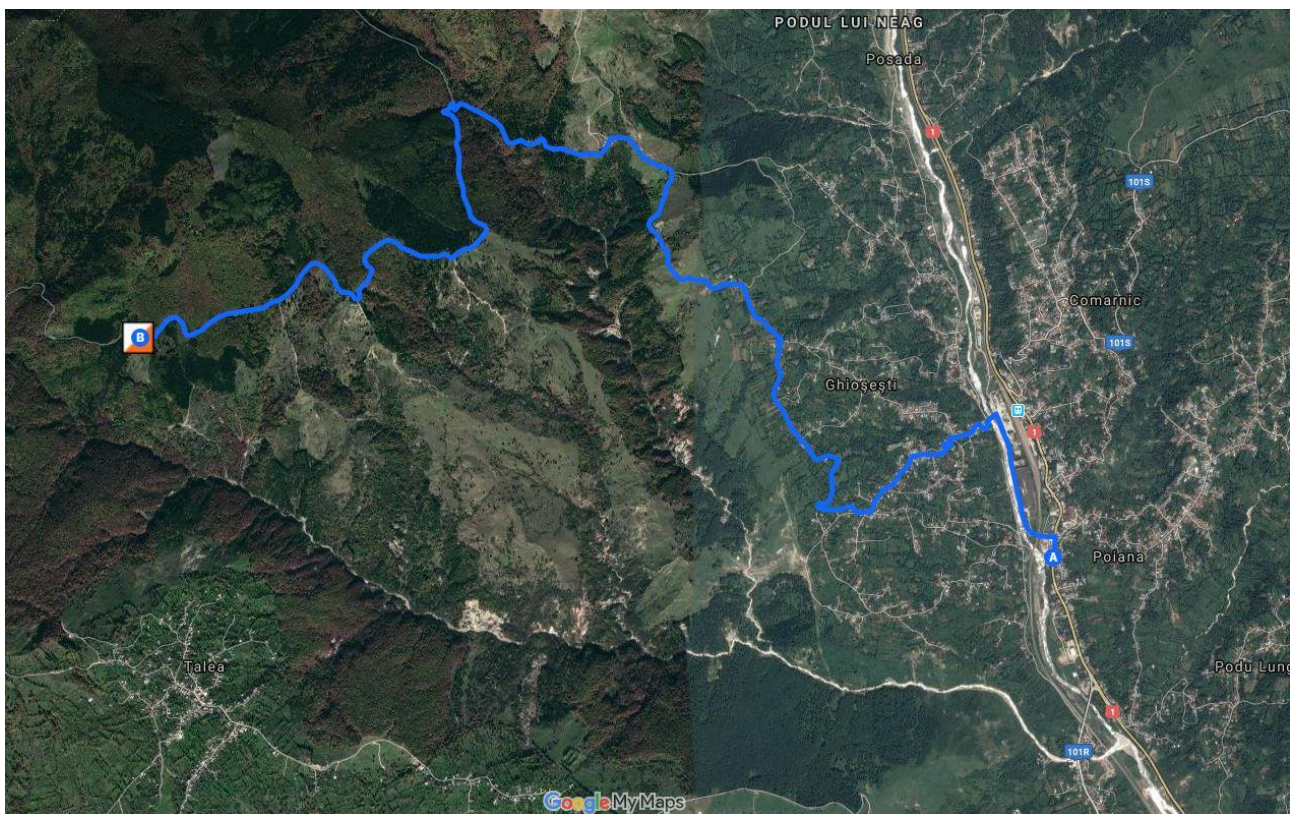
Event Center is located on the forest road from Gurguiata Side.

The access to the Event Center, respectively at the Parking, will be on a marked road beginning from the National Road 1 (DN 1), in accordance with the enclosed map. From DN1 to the Event Center there are a 12 km distance, from that the first 6 km are on an asphalted road. To cover this distance by car, it takes about **35 - 45 min.**

The road bifurcation on DN1 it is at **90 km from Otopeni International Airport.**

The Start corridors will be marked beginning from the Event Center for the both stages. The Finish will be in the near of Event Center.

Warm Up Map and Model Event (ME) Area comprises the area between the Event Center and the Start point. On the map you will see the Event Center, the Start point, the Start corridor and the controls placed on specific landmarks.



The access road from DN1 to the Event Center and Parking
(45.24659, 25.55921), for LD and MD stages, on June, 1st and 2nd.
12 km (**35 - 45 min**, by car)

Accommodation: Hotels in Comarnic, Cornu, Breaza, Campina, Sinaia;

Lunch: You can take the lunch at Event Center, on June, 1st and 2nd. The locals offer to you, surcharge, **traditional domestic dishes.**

RUNNERS PARTICIPATE ON THEIR OWN RESPONSIBILITY