

SG MTBO 2019

WRE, WORLD MASTERS SERIES, AUT&HUN CUP, SLO NATIONALS

4. - 5. May 2019, Slovenj Gradec, Slovenia



BULLETIN 3

sgmtbo.ok-sg.si
www.facebook.com/sgmtbo2019

The best Slovenian MTBO competition!
#ORIENTATIONJUNKIE



Organiser:

ORIENTACIJSKI KLUB SLOVENJ GRADEC

Gregor Raj, race director, course setter, mapper

Gregor Andrejc, logistics, map controller

Wolfgang Pötsch, IOF Event Adviser

Blaž Miheljak, entries & results

Maja Visinski Andrejc, webmaster

Contact: info@ok-sg.si

Honorary Patron: **Tilen Klugler**, Mayor of the Municipality of Slovenj Gradec

Schedule:

Friday, 3rd May 2019

TRAINING

Map: **BRDA**, 1:10000

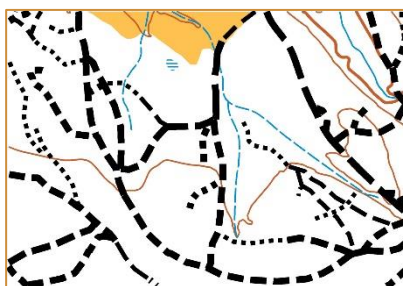
Maps will be available in Competition Center for 5 €.

Saturday, 4th May 2019

MIDDLE DISTANCE (1st stage of SG MTBO 2019)

Map: **DOBRAVA JUG**

Scale: 1:10000



Event center: [KOCEROD](#)

Coordinates: [N46.462583](#), [E15.119825](#)

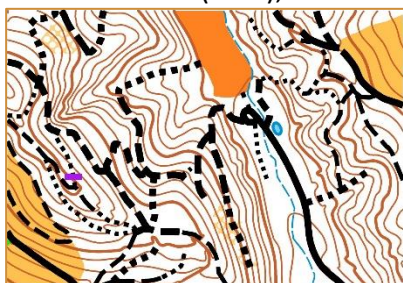
First start: 12:00

Sunday, 5th May 2019

LONG DISTANCE (2nd stage of SG MTBO 2019)

Map: **STARI TRG**

Scale: 1:15000 (Elite), 1:10000 (all other classes)



Event center = Competition center: [HOSTEL MKC](#)

Coordinates: [N46.513793](#), [E15.076344](#)

First start: 10:00

Prize giving: 14:00 (apx., as soon as possible)

Competition center:

HOSTEL MKC, Ozare 18, 2380 Slovenj Gradec

Limited accommodation possibilities are available at location, including free Camper stop.

Opening hours:

<u>Friday, 3rd May:</u>	12:00-20:00
<u>Saturday, 4th May:</u>	16:00-20:00
- during Stage 1 (10:00-15:00) CC will move to	<u>KOCEROD</u>
<u>Sunday, 5th May:</u>	8:00-15:00

Classes:

FAMILY	Parents can participate with children after their race
OPEN	Technically easy but longer course
E-Bike	Max. 25 km/h, 250 Watt
MW10	Kids who are able to navigate on their own. Parents can follow them without navigational help.

M14, M15–17, M18–20, M ELITE, M21 SHORT, M35 (WMS), M40, M50, M60, M70
W14, W15–17, W18 – 20, W ELITE, W21 SHORT, W35 (WMS), W40, W50, W60, W70

Ranking:

WORLD RANKING EVENT (M ELITE, W ELITE)

World Masters Series (competitors should provide their year of birth with entries)

Slovenian championship on middle distance

Austrian Cup

Hungarian Cup

14th Cup od Slovenj Gradec in MTBO

Overall result after stage 2.

Prizes for best 3 in all categories.

Punching and timing:

SPORTident Air+
Range 1,8 m.

Entries:

Entries are closed.

Additional are possible via e-mail or 1 hour before the race for vacant places only.

Entry fees:

MW10, M14, W14, OPEN, FAMILIES	7 EUR / day
M15-17, W 15-17	8 EUR / day
M18 – 20, M21 SHORT, M35(WMS), M40, M50, M60, M70 E-Bike	14 EUR / day
M ELITE, W ELITE	16 EUR / day
SI card rent	1,5 EUR / day

All entries must be paid until 30.4.2019 via bank transfer.

IBAN: **SI56 6000 0000 0440 160**

Orientacijski klub Slovenj Gradec, Muratova ulica 24, 2380 Slovenj Gradec, Slovenija

Bank: Hranilnica LON d.d., Bleiweisova cesta 2, 4000 Kranj, Slovenija

SWIFT: HLONSI22

Accommodation:

<http://www.turizem-slovenjgradec.si/>

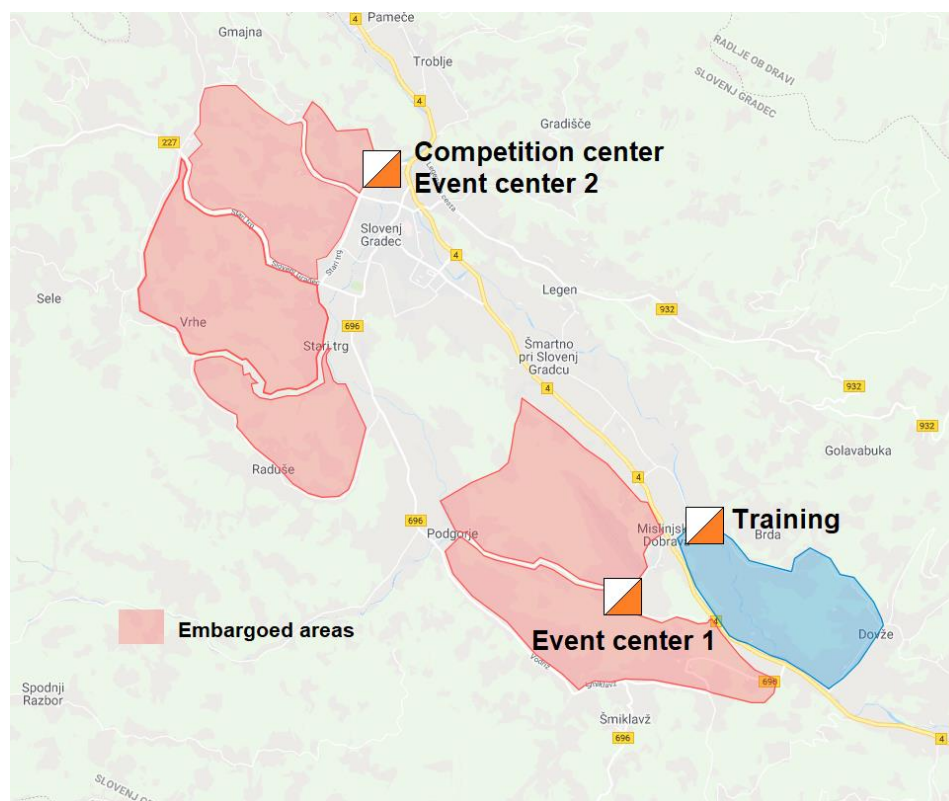
mail: tic@slovenjgradec.si

phone: +386 2 881 2116

Limited accommodation possibilities are available at location, including free Camper stop.

Embargoed areas:

[Competition area](#) is embargoed for training purposes until the event.



Course details:

	Middle distance			Long distance		
	CP	Distance (optimal)	Climb	CP	Distance (optimal)	Climb
MW 10	14	3,9 km	40 m	8	3,9 km	165 m
W 14	14	3,9 km	40 m	9	4,5 km	170 m
W 15-17	14	7,6 km	80 m	12	9,8 km	365 m
W 18-20	17	11,8 km	125 m	15	13,1 km	470 m
W Short	16	11,1 km	105 m	15	12,9 km	465 m
W ELITE	22	13,2 km	140 m	23	25,1 km	845 m
W 35 WMS	18	12,0 km	130 m	19	18,9 km	605 m
W 40	18	12,0 km	130 m	19	18,9 km	605 m
W 50	16	11,1 km	105 m	15	12,9 km	465 m
W 60	14	7,6 km	80 m	12	9,8 km	365 m
W 70	14	7,6 km	80 m	12	9,8 km	365 m
M 14	14	3,9 km	40 m	9	4,5 km	170 m
M 15-17	17	11,8 km	125 m	15	13,1 km	470 m
M 18-20	20	12,9 km	130 m	22	21,9 km	725 m
M Short	18	12,0 km	130 m	19	18,9 km	605 m
M ELITE	25	15,8 km	160 m	27	29,0 km	1100 m
M 35 WMS	22	13,2 km	140 m	23	25,1 km	845 m
M 40	22	13,2 km	140 m	23	25,1 km	845 m
M 50	20	12,9 km	130 m	22	21,9 km	725 m
M 60	16	11,1 km	105 m	15	12,9 km	465 m
M 70	16	11,1 km	105 m	15	12,9 km	465 m
E-bike	20	12,9 km	130 m	22	21,9 km	725 m
OPEN	17	11,8 km	125 m	15	13,1 km	470 m
FAMILY	12	3,5 km	40 m	8	3,9 km	165 m

FRIDAY, 3.5.2019 - TRAINING

Maps for free training with 8 control points (without SI) are available at Competition center from 12:00 till evening.

Map price: 5 EUR

Distance from CC to training area: 6,7 km

We suggest biking via Štrekna bike path (direction Mislinja, Dolič).



SATURDAY, 4.5.2019 – MIDDLE DISTANCE (1st stage of SG MTBO 2019)

Map: **DOBRAVA JUG**
Scale: **1:10000, E = 5 m, 04-2019**
Size: A4 for MW10, M14, W14, FAMILIES.
A3 all other categories.

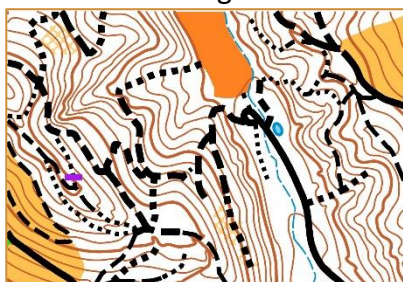


Event center: [KOCEROD](#)
Coordinates: [N46.462583, E15.119825](#)

First start: 12:00
No map change, no refreshment points.
Distance to start: 1500 meters, 10 meter climb, easy riding.

SUNDAY, 5.5.2019 – LONG DISTANCE (2nd stage of SG MTBO 2019)

Map: **STARI TRG**
Scale: **1:15000 (Elite), 1:10000 (all other classes). E=5m, 04-2019**
Size: A4 for MW10, M14, W14, FAMILIES.
A3 all other categories.



Event center = Competition center: [HOSTEL MKC](#)
Coordinates: [N46.513793, E15.076344](#)

First start: 10:00
Map change: M/W ELITE, M/W Short, M/W35, M/W 40, M/W 50, M 60, M 70
(competitors receive two maps on start)
Refreshment point: at 50-60 % of all courses (except MW10, M/W 14, FAMILIES).
Competitors can leave their own bottles 1 hour before first start in CC.
Please mark bottles with start number!
Distance to start: 1900 meters, 15 meter climb, easy riding.
Prize giving: 14:00 (apx., as soon as possible)

Additional info:



Riding off track is not allowed!

You are allowed to pass only those open land areas which are marked with orange colour on the map. Those passages are not marked on terrain.

It's also forbidden to drive over olive green areas, except if roads or paths are mapped over those areas.



Some parts of narrow paths which are hardly visible are marked in the forest with red/white ribbons. You can ride along those (otherwise mapped) paths.



New Highway is planned in small part of middle distance area. A lot of red and yellow field survey markings can be found in a forrest. They are not mapped, watch out during biking.

Attention:

- Event will take place in any weather conditions.
- Competitors are responsible for their own safety. Everybody starts at his/her own risk and responsibility and is accountable for his/her own actions during and after the race.
- The organiser takes no responsibility for any personal injuries, damaged, missing or stolen goods.
- Use of cycling helmets is compulsory.
- It is forbidden to leave the tracks, except where explicitly allowed in the additional info above. Any violation will be punished with disqualification by controllers.
- It is forbidden to use the main roads, which are marked with red crosses on maps.
- Competitors must obey traffic rules. The right-hand traffic rules apply (drive on the right-hand side in bidirectional traffic, overtake on the left hand side).
- By taking part in this competition, participants agree that results (including names) and photos taken on the event can be published, including via the internet.



Orientacijski klub
Slovenj Gradec

