



3rd Asian Junior & Youth Orienteering Championships

第3回アジアジュニア・ユースオリエンテーリング選手権大会

Bulletin 2

27th August–1st September 2019

Hokuto Japan



AsJYOC
2019 Hokuto
Japan

WELCOME !

Dear all Asian junior orienteers:

Japan Orienteering Association welcomes you to the 3rd Asian Junior and Youth Orienteering Championships which will be held in Hokuto City, Japan from 27th August to 1st September 2019.

AsJYOC is not only a place where the champions of Asian junior and youth are decided, but also an introduction to the international races, and a place where new friendships are born. I have participated in the 1st AsJYOC in Hong Kong and 2nd AsJYOC in China. The experiences and friends gained there greatly enriched my orienteering life.

We are preparing the best stages for Asian juniors in the technical and challenging terrains of Hokuto City, a beautiful highland between Mt. Yatsugatake and Mt. Mizugaki. We are looking forward to your challenge.

Event Director

Go Inamori



PROGRAM

AUGUST–SEPTEMBER 2019

Tuesday, 27th	Arrival (around noon), Registration, Model Event
Wednesday, 28th	Opening Ceremony, Sprint
Thursday, 29th	Rest Day (Activity)
Friday, 30th	Sprint Relay
Saturday, 31st	Middle Distance , Closing Ceremony, Banquet
Sunday, 1st	Departure (in the morning)

EVENT OFFICIALS

Organizer:	Japan Orienteering Association
IOF Senior Event Advisor:	Yoonsun Cha
Event Director:	Go Inamori
Event Secretary:	Ken Shibamura
Course Manager:	Yuki Nitami

COURSE PLANNERS

Sprint:	Wakana Miyamoto
Sprint Relay:	Suzu Masuzawa
Middle Distance:	Itsuki Ito

IOF MEMBER FEDERATIONS IN ASIA

 CHN China	 JPN Japan	 NEP Nepal
 HKG Hong Kong	 KAZ Kazakhstan	 PRK DPR of Korea
 INA Indonesia	 KGZ Kyrgyz	 SGP Singapore
 IND India	 KOR Republic of Korea	 THA Thailand
 IRI Iran	 MAS Malaysia	 TPE Chinese Taipei

COMPETITION CLASSES

SPRINT AND MIDDLE DISTANCE

W14, M14

Up to 14 years old, born in 2005 or later

W18, M18

Up to 18 years old, born in 2001 or later

W16, M16

Up to 16 years old, born in 2003 or later

W20, M20

Up to 20 years old, born in 1999 or later

SPRINT RELAY

M/W14

Up to 14 years old, born in 2005 or later,
4 legs per team with at least 2 female runners

M/W18

Up to 18 years old, born in 2001 or later,
4 legs per team with at least 2 female runners

M/W16

Up to 16 years old, born in 2003 or later,
4 legs per team with at least 2 female runners

M/W20

Up to 20 years old, born in 1999 or later,
4 legs per team with at least 2 female runners

REGULATION

1. Minimum age of participation is age 13, born in or before 2006.
2. In each individual class, each country may enter a maximum of **5 competitors**.
3. Each country may enter **2 teams** in each relay class but only the better-placed team will be counted in the prize list.
4. If a federation is unable to form full relay teams (even with women running in men' s classes), it may form incomplete teams or mixed teams with runners from other federations. Under no circumstances may persons other than entered competitors participate in the competition. Teams with runners from more than one federation are not placed on the official result list.
5. Competitors representing member federations of the IOF, defined by the International Olympic Committee as belonging to the Asian continent, can compete in AsJYOC.
6. Competitors representing other member federations of IOF or other Asian countries can participate in AsJYOC but will not be eligible for the AsJYOC titles, medals or diplomas.
7. The winners of the age class 20, 18 and 16 will be the **Asian Junior Champions** and the **Asian Youth Champions** of the AsJYOC respectively. The winners of the **age class 14** will **not** be eligible for the AsJYOC titles.

COMPETITION AREAS

All terrains of the events are located in Hokuto City, Yamanashi Prefecture.



EMBARGOED AREAS

Any attempt to survey or train in the embargoed areas is forbidden, unless explicitly permitted by the organizer. The previous map of Seisenryo and Forest in Kiyosato (Kiyosato Utsukushimori, 1:10,000/5 m, year 2014) can be found on the website. Please check the details on Google Maps:

https://www.google.com/maps/d/viewer?mid=1pxTI-60bqxSszF-Ce5XmIkMmBI_0smul



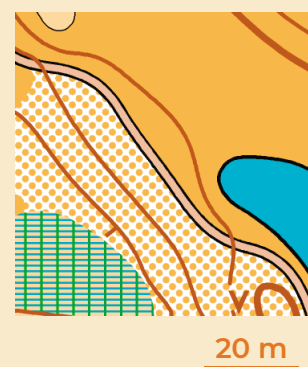
MAPS AND TERRAINS

Maps are newly surveyed in 2019, according to ISSOM2007 for Sprint and Sprint Relay and ISOM2017 for Middle Distance.

	Sprint	Sprint Relay	Middle Distance
Place	Kiyosato Okanokouen	Seisenryo	Forest in Kiyosato
Coordinates	N35.904014, E138.431975	N35.926122, E138.421340	N35.945462, E138.423183
Scale/Contour	1:4,000/2 m	1:4,000/2 m	1:10,000/5 m

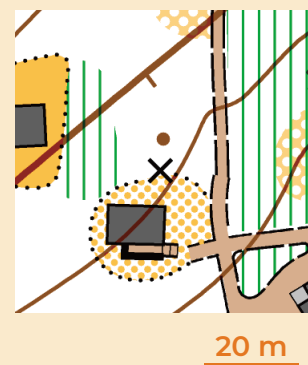
SPRINT (KIYOSATO OKANOKOUEN)

The terrain is located about 1,200 m above sea level, southeast of the Yatsugatake Mountains. It is a southward slope with a maximum height difference of 80m. There are areas of open land and well maintained forests, making runnability relatively very good. Although there is little landform, we see other various prominent features, such as sandy ground, ponds and fences, in open areas.



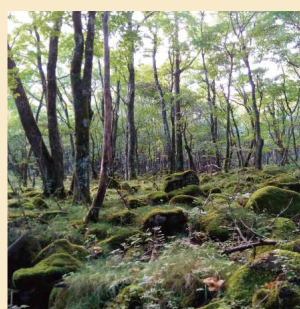
SPRINT RELAY (SEISENRYO)

The terrain is a southeastward slope located about 1,400 m above sea level, southeast of the Yatsugatake Mountains. There is relatively little contour detail. On the other hand, there are some buildings as well as a maintained forest. Many paths stretch in between the buildings and inside the forest. Height difference 150 m.



MIDDLE DISTANCE (FOREST IN KIYOSATO)

The terrain is a southeastward slope, located at the foot of the Yatsugatake Mountains, about 1,500 m above sea level. Most of the terrain has little contour detail except for parts where we see detailed contours. Visibility is mostly good, but undergrowth lower runnability. We see only a few roads and paths, while there are many minor water channels, boulders and stony grounds. Height difference 200 m.



COMPETITION INFORMATION

COMPETITION RULES

IOF Competition Rules for Foot Orienteering will apply.

PUNCHING SYSTEM

The SPORTident punching system will be used in all competitions. We will prepare all SI-Cards.

CLOTHING

There are no restrictions for the Sprint and Sprint Relay. For Middle Distance, competitors must wear clothing that fully covers their torso and legs.

Shoes with any kind of metal (spikes, dobb spikes) are not allowed for Sprint and Sprint Relay. Choice of footwear is free for Middle Distance.

PRELIMINARY COURSE INFORMATION

	Sprint	Sprint Relay	Middle Distance
W14, M14, W16, M16, W18, M18	12–15 min	-	25–30 min
W20, M20	12–15 min	-	30–35 min
M/W14, M/W16, M/W18	-	45 min	-
M/W20	-	60 min	-

ANTI-DOPING

The organizers will comply with the IOF Anti-Doping Rules valid at the time of the AsJYOC 2019.

CLIMATE

August is the hottest month in Hokuto City. Average temperature is 24 °C, while it can reach more than 30 °C on the hot days. However, the competition will be held in the highlands, higher than 1,000 m above sea level, where it will be cooler and less humid.

MODEL EVENT

A model event for Sprint and Middle Distance will be held in the same place (not the competition area).

ENTRY

All entries for AsJYOC 2019 must be made through the respective federations via the **IOF Eventor**:

<https://eventor.orienteering.org/Events/Show/6125>

Only persons registered as **Entry Administrator** for the federations in the IOF Eventor system are allowed to do the registration. Contact IOF at eventor@orienteering.org if you have any problems or questions. Individual entries not making through their respective federations will not be accepted.

PRELIMINARY ENTRY (Number of Competitors)

The deadline for preliminary entry is **15th June 2019**. Entries for number of competitors in each class and team officials should be made through the IOF Eventor. Please note the maximum number of team officials per federation is 6.

FINAL REGISTRATION (Name and Detail Information of Competitors)

The deadline for final registration and payment is **15th July 2019**. Entries for name and detail information of competitors and officials should be made through the IOF Eventor.

PAYMENT

Please note that the payer is responsible for all bank fees and charges. Entries will not be deemed valid until full payment is received by the organizer.

Entry Fee: JPY 50,000 per competitor, JPY 40,000 per official

(including accreditation, races, transport, accommodation, full meals, rest day activity, souvenir)

Bank Information will be announced in **early May 2019**.

ACCOMMODATION

All competitors and officials will stay at the same dormitory-type accommodation. Meals are provided from dinner of 27th August to breakfast of 1st September. If any special needs (allergies etc), please notify us advance.

TRANSPORT

Transport will be provided between Kobuchizawa Station and accommodation on arrival day and departure day, and between accommodation and event center through out the competition. Participants should arrange their own transport from the airport to Kobuchizawa Station. Please refer the website of Yamanashi Tourism Organization: https://www.yamanashi-kankou.jp/foreign/english/special/access_kobuchizawa.html

VISA REQUIREMENT

For information for visa requirement to visit Japan, please check the website of the Ministry of Foreign Affairs of Japan: https://www.mofa.go.jp/j_info/visit/visa/index.html

TRAINING OPPORTUNITY

We will arrange Training Camps in mid-April and just before the championships.

If you hope for other training opportunities, please contact us.

TRAINING CAMP IN SPRING

19th–21st April 2019

Further information is written in Training Camp bulletins.

<http://www.orienteering.or.jp/asjyoc2019/training-opportunity.html>

TRAINING CAMP IN SUMMER

25th–26th August 2019

Further information to come in Training Camp bulletin (to be published in **early May 2019**).

PROGRAM

August 2019

Sunday, 25th Arrival (around noon), Training

Monday, 26th Training

Tuesday, 27th Registration, Model Event

TRAINING AREAS

Terrains near those of the competition.

ENTRY

Entry Fee: About JPY 20,000 per person

ACCOMMODATION

We will arrange accommodation. Meals are provided from dinner of 25th August to lunch of 27th August. If any special needs (allergies etc.), please notify us advance.

TRANSPORT

We will arrange transportation between Kobuchizawa Station and the accommodation on the arrival day. Participants should arrange their own transportation from the airport to Kobuchizawa Station. On the arrival day, we will pick up participants at the station from 10:00 to 17:00. Please notify us the arrival time to Kobuchizawa Station. If you arrive late, you may not participate the training on 25th August.

SPECTATOR EVENT

HOKUTO INTERNATIONAL 3 DAYS

Spectator Races will be held from 30th August to 1st September 2019, that can be enjoyed by younger generations, elite and veterans. Further information will be announced in **early May 2019**.

PROGRAM

AUGUST–SEPTEMBER 2019

Friday, 30th	Sprint (Day/Night)	Kiyosato Okanokouen
Saturday, 31st	Middle Distance (Asian Orienteering Cup/World Ranking Event)	Forest in Kiyosato
Sunday, 1st	Long Distance	Forest in Kiyosato

TERRAINS

Spectator events are held in the **same terrains as the competitions**.

ACCOMMODATION

We will arrange accommodation.

CONTACT

Japan Orienteering Association

Address: Kishi-kinentaiiku-kaikan B1, 1-1-1, Jinnan, Shibuya-ku, Tokyo

Website: <http://www.orienteering.or.jp/asjyoc2019/>

Tel: +81-3-3467-4548 (10 a.m.–4 p.m. JST on weekdays)

Email: asjyoc2019.hokuto@gmail.com

Twitter: <https://twitter.com/asjyoc2019japan/>

Instagram: <https://www.instagram.com/asjyoc2019japan/>

Facebook: <https://www.facebook.com/asjyoc2019japan/>

Bulletin 3 to be issued in August 2019.