

SG MTBO 2019

WRE, WORLD MASTERS SERIES, AUT CUP, SLO NATIONALS

4. - 5. may 2019, Slovenj Gradec, Slovenia



BULLETIN 2

sgmtbo.ok-sg.si
www.facebook.com/sgmtbo2019

The best Slovenian MTBO competition!
#ORIENTATIONJUNKIE



Organiser:

ORIENTACIJSKI KLUB SLOVENJ GRADEC

Gregor Raj, race director, course setter, mapper

Gregor Andrejc, logistics, map controller

Wolfgang Pötsch, IOF Event Adviser

Blaž Mihelj, entries & results

Maja Visinski Andrejc, webmaster

Contact: info@ok-sg.si

Honorary Patron: **Tilen Klugler**, Mayor of the Municipality of Slovenj Gradec

Schedule:

Friday, 3rd May 2019

TRAINING

Map: **BRDA**, 1:10000

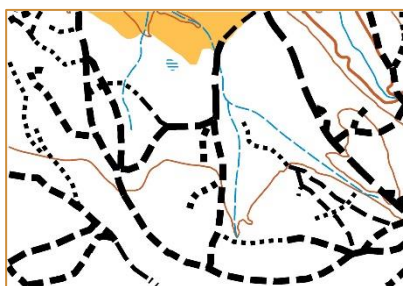
Maps will be available in Competition Center for 5 €.

Saturday, 4th May 2019

MIDDLE DISTANCE (1st stage of SG MTBO 2019)

Map: **DOBRAVA JUG**

Scale: 1:10000



Event center: [KOCEROD](#)

Coordinates: [N46.462583](#), [E15.119825](#)

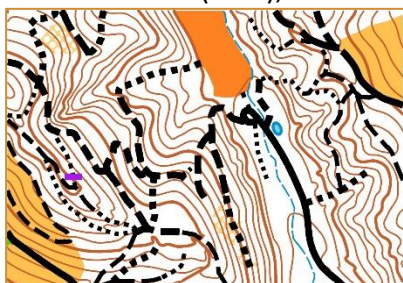
First start: 12:00

Sunday, 5th May 2019

LONG DISTANCE (2nd stage of SG MTBO 2019)

Map: **STARI TRG**

Scale: 1:15000 (Elite), 1:10000 (all other classes)



Event center = Competition center: [HOSTEL MKC](#)

Coordinates: [N46.513793](#), [E15.076344](#)

First start: 10:00

Prize giving: 14:00 (apx., as soon as possible)

Competition center:

[HOSTEL MKC](#), Ozare 18, 2380 Slovenj Gradec

Limited accommodation possibilities are available at location, including free Camper stop.

Opening hours:

<u>Friday, 3rd May:</u>	12:00-20:00
<u>Saturday, 4th May:</u>	16:00-20:00
- during Stage 1 (10:00-15:00) CC will move to	KOCEROD
<u>Sunday, 5th May:</u>	8:00-15:00

Classes:

FAMILY	Parents can participate with children after their race
OPEN	Technically easy but longer course
E-Bike	Max. 25 km/h, 250 Watt
MW10	Kids who are able to navigate on their own. Parents can follow them without navigational help.

**M14, M15–17, M18–20, M ELITE, M21 SHORT, M35 (WMS), M40, M50, M60, M70
W14, W15–17, W18 – 20, W ELITE, W21 SHORT, W35 (WMS), W40, W50, W60, W70**

Ranking:

WORLD RANKING EVENT (M ELITE, W ELITE)

World Masters Series (competitors should provide their year of birth with entries)

Slovenian championship on middle distance

Austrian Cup

Hungarian Cup

14th Cup od Slovenj Gradec in MTBO

Overall result after stage 2.

Prizes for best 3 in all categories.

Punching and timing:

SPORTident Air+

Range 1,8 m.

Entries:

- [Orienteering Online](#)
- **Eventor** (elite only): [Day 1](#), [Day 2](#)
- **ANNE** (Austrian competitors): [Day 1](#), [Day 2](#)

Entry deadline 25th April 2019.

Entry fees:

MW10, M14, W14, OPEN, FAMILIES	7 EUR / day
M15-17, W 15-17	8 EUR / day
M18 – 20, M21 SHORT, M35(WMS), M40, M50, M60, M70 E-Bike	14 EUR / day
M ELITE, W ELITE	16 EUR / day
SI card rent	1,5 EUR / day

All entries must be payed until 30.4.2019 via bank transfer.

IBAN: **SI56 6000 0000 0440 160**

Orientacijski klub Slovenj Gradec, Muratova ulica 24, 2380 Slovenj Gradec, Slovenija

Bank: Hranilnica LON d.d., Bleiweisova cesta 2, 4000 Kranj, Slovenija

SWIFT: HLONSI22

Accommodation:

<http://www.turizem-slovenjgradec.si/>

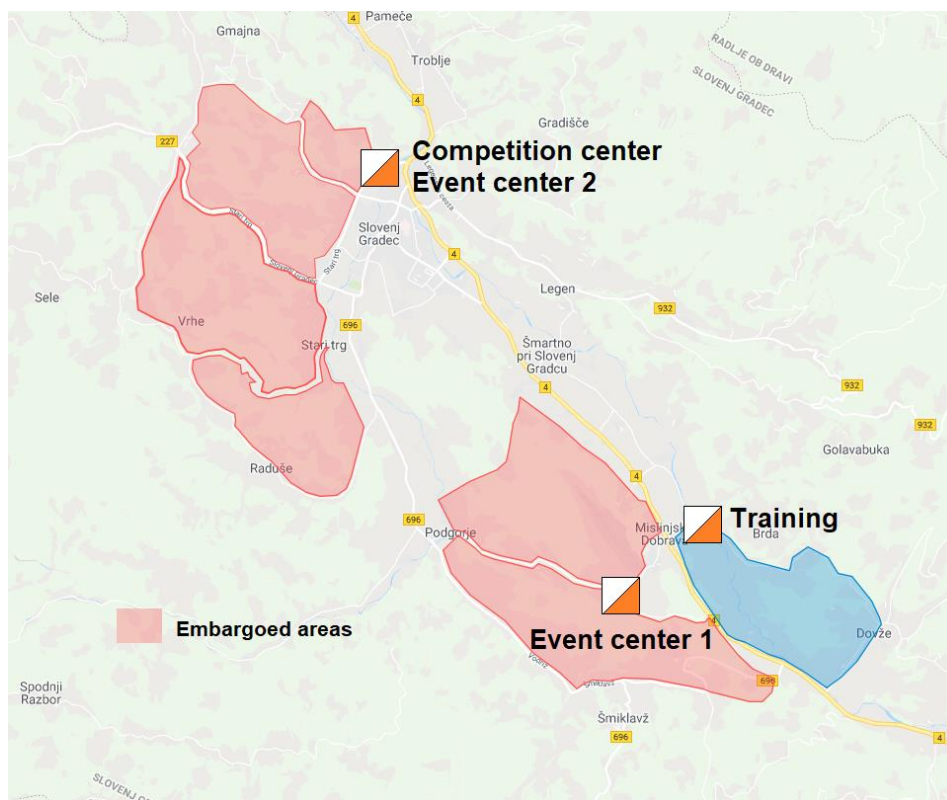
mail: tic@slovenjgradec.si

phone: +386 2 881 2116

Limited accommodation possibilities are available at location, including free Camper stop.

Embargoed areas:

[Competition area](#) is embargoed for training purposes until the event.



Attention:

- Event will take place in any weather conditions.
- Competitors are responsible for their own safety, everybody starts at his own responsibility.
- Use of cycling helmets is compulsory.
- It is forbidden to leave the tracks. Any violation will be punished with disqualification by controllers.
- It is forbidden to use some main roads (marked with red crosses on maps).
- Competitors must obey traffic rules.
- Participants agree that results and photos taken on the event could be published, including via the internet.



**Orientacijski klub
Slovenj Gradec**

