



FEDERAȚIA ROMÂNĂ DE ORIENTARE

METROPOLITAN
Sport Club
Bucharest



invite you to

CORNU, on 2019, May 31,

COMARNIC, *Gurguia Side*, on 2019, June 1st - 2nd

to participate at The Great Orienteering Event:

CARPATHIAN O - TROPHY

NATIONAL Team Orienteering Championship

NATIONAL Urban Sprint Ch. St. 4 & Cornu Cup & OK Silva Cup

COMARNIC City Cup – III Edition

2 World Ranking Events

BULLETIN 1



XLAB SOLUTIONS

Pursuing the Excellence

GHM TEAM

TRUE ATTITUDE
@decorporate®

The competition takes place:



Under the auspices of

The ROMANIAN ORIENTEERING FEDERATION



Natalia Deaconescu, ROF President: „The Romanian Orienteering Federation has the pleasure to invite you at the National Team Championships and Urban Sprint Stage 4, carried out simultaneously with the Carpathian O-Trophy, including two WRE stages. By well-organized competitions and high technical level races, the Comarnic hills and Cornu Commune will give you the opportunity to prove your physical and technical capacities for orienteering and the well-known hospitality of the hosts will provide you, once more, unforgettable experiences. You're welcome to Comarnic and Cornu.”



Puiu Garba, Secretar General FRO: „I am particularly honored to attend the first National Championships for Running Orienteering this year, developed together with an international competition, Carpathian O - Trophy. I am convinced that the Comarnic area and Cornu Commune will offer the occasion of a very good areas for the competition, both for the carrying out of ranking world stages and for the beauty of the landscape. I wish good luck to the participants.”

Organized by METROPOLITAN S.C. Bucuresti and O. K. SILVA Campina



Horia Galateanu,
METROPOLITAN S.C.
President



Lucian Galateanu,
Coordinator and Course
Planner LD & MD Stages



Mihai Tudorache,
OK SILVA Campina
President



Daniel Stroescu,
Course Planner
Urban Sprint Stage

„We will prepare, with great attention to all the details, an experience that we want it to be for you interesting and remarkable but very pleasant also. Through our collaboration, we hope to bring outstanding results for all athletes wishing them success and a warm welcome on the lands of Prahova!”

With the assistance of: The COMARNIC City Hall and CORNU City Hall



Sorin Popa, Mayor of Comarnic: „We are glad to be the host of this event and we hope to offer our guests the optimal conditions for an orienteering competition of international stature as well as the ambience of our beautiful landscapes.”



Cornel Nanu, Mayor of Cornu: „Cornu Commune has again the opportunity to host sports competitions of high level, in this case, the National Orienteering Championship and Carpathian O – Trophy. We provide our sport facilities for the proper organization and running of the competition.”

With the support of:



XLAB SOLUTIONS

Mihnea Grecu: „I am glad to support this competition. The Orienteering educated me, has formed me as a man. Today, completes me and defines me!”



GHM TEAM

Horatiu Grecu: „Together we can develop both competitions and new generations of athletes.”



DECORPORATE

Cosmin Morar: „My years in Orienteering were reflected in all that followed. We learned of the small what it means hardworking, to want and to try to exceed your limits.”

COMPETITIONS and CLASSES

- **Carpathian O – Trophy**, – overall 3 stages: Urban Sprint (May 31), LD/**WRE** (June 1st) and MD/**WRE** (June 2nd); MW12-MW80, Open, Open Family, Technical Open;
Competition awarded by the Metropolitan S.C. Bucharest
- **NATIONAL Team Orienteering Championship** – overall LD and MD stages, by club 2 runners teams; MW12,14,16,18,20,21;
Competition awarded by the Romanian Orienteering Federation
- **Cornu Cup** – Urban Sprint stage, MW12-MW80, Open, Open Family, Tech. Open;
Competition awarded by the OK Silva Campina and Cornu Townhall
For MW14,18,21 classes, the results are taken into account as
NATIONAL Urban Sprint Championship Stage 4
- **OK Silva Cup** – overall Urban Sprint and LD stages; MF12-MF80, Open, Open Family, Technical Open;
Competition awarded by the OK Silva Campina
- **Comarnic City Cup** – overall 2 stages (June, 1st and 2nd); competition addressed to the beginners from Comarnic, Open MW ≤15 years old, Open MW ≤19 years old.
Competition awarded by the Comarnic Townhall

The COMPETITIONS PROGRAMME

Friday, May 31 ^{*)}	13:30 – 15:30 Registration at Event Centre , Sport Hall, Cornu, Ph.; 15:00 Quarantine, Sport Hall, Cornu; 15:30 Start Urban Sprint Stage; 17:30 Cornu Cup prize giving ceremony;
Saturday, June 1 st ^{**)}	9:00 –10:30 Registration at Event Centre, Comarnic, Gurguiata Side; 10:30 Start LD Stage (WRE); Warm Up Map & Model Event on the access area to the Start 14:00 OK Silva Cup prize giving ceremony; In the opening, short artistic program and the word of the Mr. Sorin Popa, Mayor of Comarnic Town, on the occasion of the anniversary, on May 27 th , of the 509 years from the first documentary attestation of Comarnic. 12:00- 14:30 You can take the lunch at Event Center, surcharge, by traditional domestic dishes;
Sunday, Juner 2 nd ^{**)}	10:00 Start MD stage (WRE); 13:30 Prize giving ceremony for Comarnic City Cup, Carpathian O-Trophy and NATIONAL Team Orienteering Championship. 12:00–14:00 You can take the lunch at Event Center, surcharge, by traditional domestic dishes

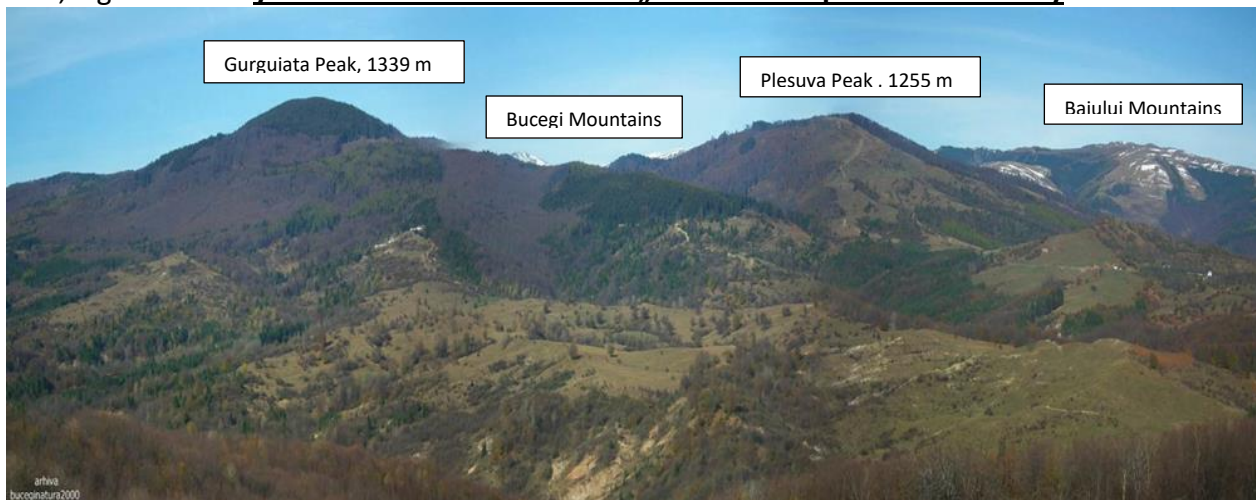
^{*)} Organizer OK Silva, assisted by Cornu Townhall

^{**)} Organizer CS Metropolitan, assisted by Comarnic Townhall

Competition area - LD and MD Stages

It comprises the side of Gurguiata Peak, going to the south and the west up to the valley of Talea. For the portion of the Gurguiata slope used in the previous edition, the map was entirely remade, so that **the entire map has the signature of Istvan Földi**.

And, a good news: **you do not have to cross the „dreaded” slopes of Belia Valley.**



View towards the competition area, from Ghiosesti hill

Information



Competition Site:

<https://carpatho.ro>

**Gabi Sabau,
Website Administrator**



Romanian Orienteering Sites:

www.fro.ro

www.orienteeing.ro

International Orienteering Sites:

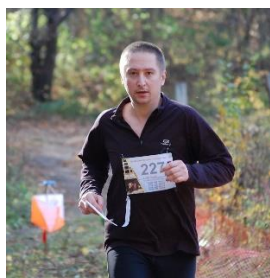
<https://eventor.orienteeing.org/Events>

www.worldofo.com/calendar

E-mail addresses for additional information:

bn.lucian.galateanu@gmail.com

horia.galateanu@laboratorccf.ro



Entries:

www.orienteeingonline.net

geotibi2002@yahoo.com

**George Neagu
Entries, Timing and Results**



Entry deadline: 2019, May 20 ^{*)}

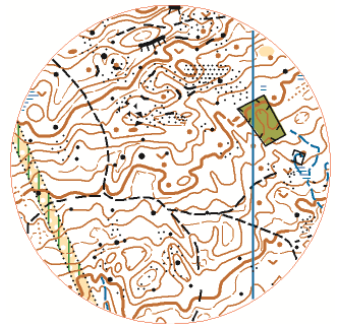
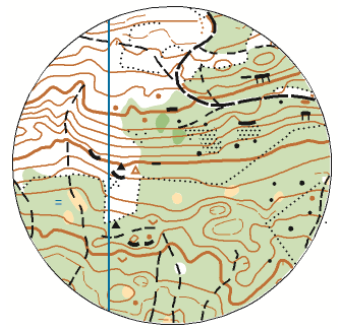
Classes MW12,14, Open, Open Fam.	15 Euro - 3 stages/ 10 euro – 2 stages
Classes MW16 - MW60, Tech. Open	25 Euro - 3 stages/ 20 Euro – 2 stages
Classes MW65 – MW80	20 Euro - 3 stages/ 15 Euro – 2 stages

^{*)} After May 20, entries will be accepted in the limit of the vacant places

Mapping 2018 – 2019, Istvan Földi:



„The area is enviable. Mountainous terrain with a strong look of hills shaped by landslides, specific to the hills from the South of the Carpathians of Curvature. Physically and technically demanding terrain covered by diverse vegetation; from beautiful mixed forest with good visibility and runnability to large areas of mountainous open and semi open pastures and parts of thick vegetation. The area consists of undulating slopes, offering good route choice possibilities, exchanging with very detailed and technically challenging landslide micro relief, sometimes with rocky walls cliffs or boulders. Moderately developed track network, large sections with no paths.”



IOF Adviser, „The Two Exacting”:

Nina and Gabi Maiorescu:

„ No detail escapes uncontrolled.
We assure you that everything will be ok,
as the most demanding expectations.”



Logistics and Start - Finish

Erika and Didi Rosca:

„For us it was a great pleasure to work with this team. They are good professionals, well-organized and especially they are united and pleasant. You will have part of a contest well done, in a pleasant atmosphere.”



Controls installation, „The 7 Magnificents”:

„Passion for Orienteering and friendship that binds us, are the secrets of our strength and successes”



Iuli



Costica



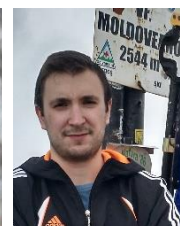
Radu



Tibi



Florin



Razvan



Cosmin

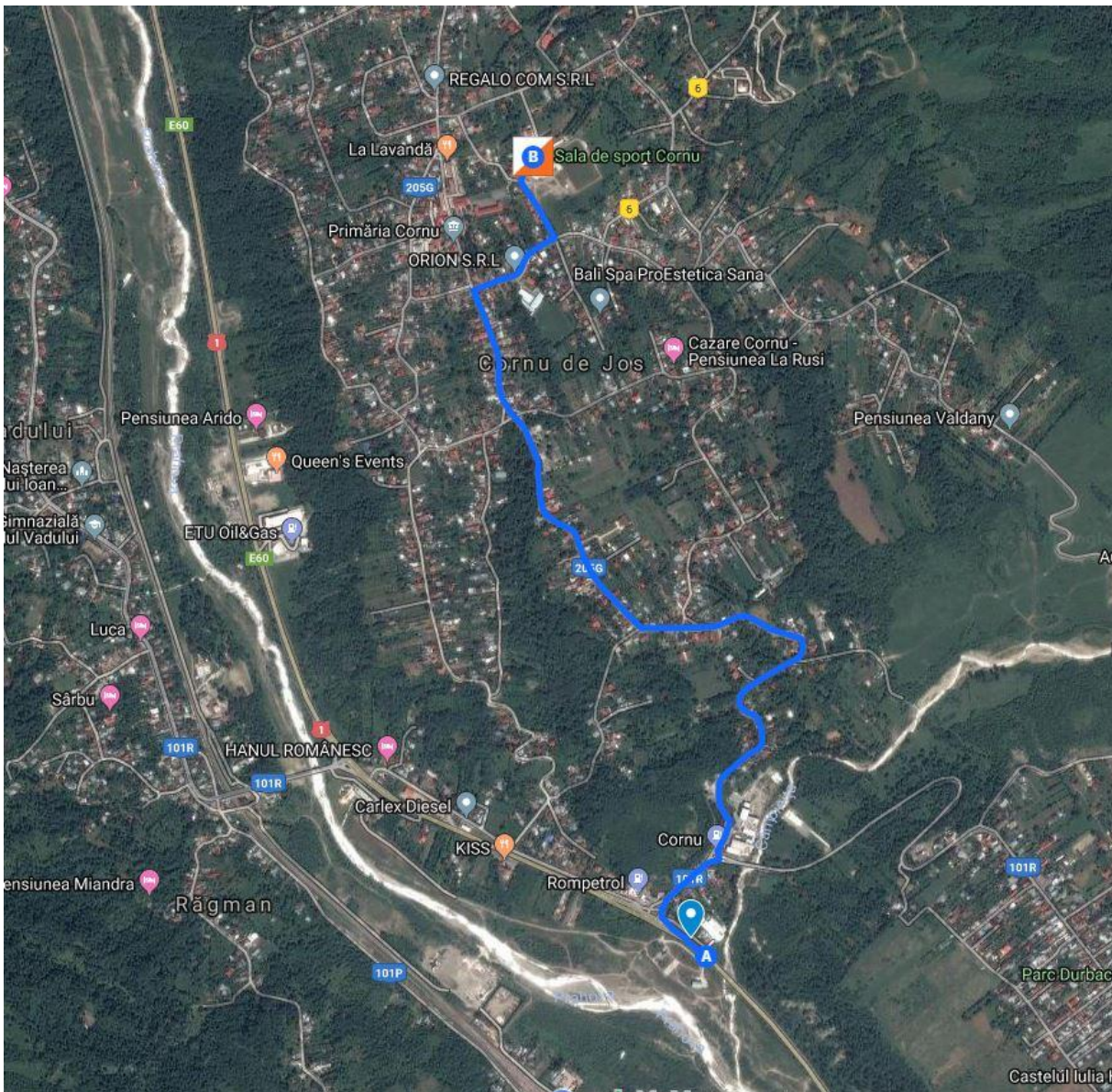
The access to the Event Center, Parking and Start - Finish

URBAN SPRINT Stage, May, 31

The Event Center is located at the Sport Hall from Cornu.

The access to the Event Center, respectively at the Parking, will be on an 3.1 km asphalted road (5 min, by car, without traffic) wich will be marked begining at the bifurcation for Cornu from National Road 1 (DN 1), in accordance with the enclosed map. The road bifurcation on DN1 it is at **80 km from Otopeni International Airport.**

The Start corridor will be marked begining from the Event Center, where it will be **the quarantine area.** The Finish will be in the near of Event Center.



The access road from DN1 to the Event Center and Parking
(45.15797, 25.70548), for Urban Sprint Stage, on May, 31.
3,1 km (5 min, by car, without traffic)

LD and MD Stages, June, 1st and 2nd

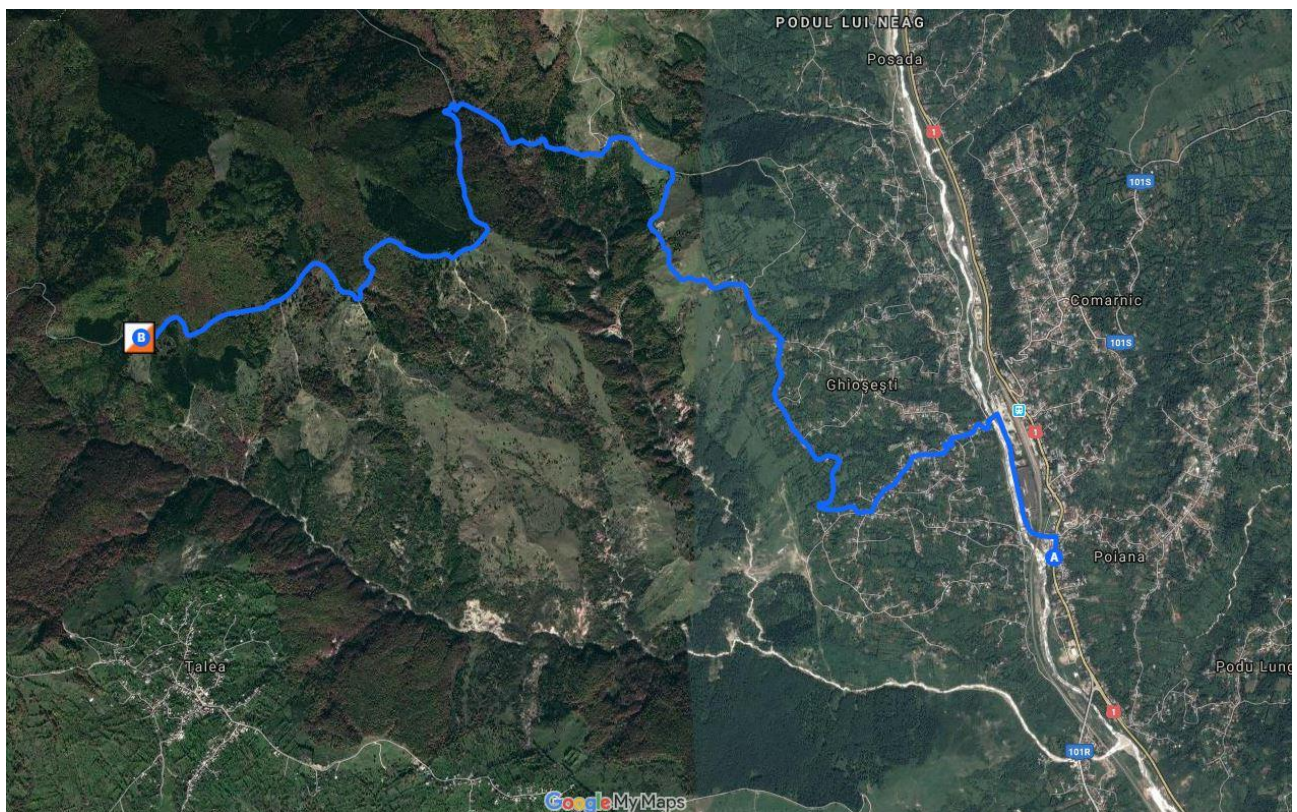
Event Center is located on the forest road from Gurguiata Side.

The access to the Event Center, respectively at the Parking, will be on a marked road beginning from the National Road 1 (DN 1), in accordance with the enclosed map. From DN1 to the Event Center there are a 12 km distance, from that the first 6 km are on an asphalted road. To cover this distance by car, it takes about 35 min.

The road bifurcation on DN1 it is at **90 km from Otopeni International Airport.**

The Start corridors will be marked beginning from the Event Center for the both stages. **The Finish** will be in the near of Event Center.

Warm Up Map and **Model Event (ME) Area** comprises the area between the Event Center and the Start point. On the map you will see the Event Center, the Start point, the Start corridor and the controls placed on specific landmarks.



The access road from DN1 to the Event Center and Parking
(45.24659, 25.55921), for LD and MD stages, on June, 1st and 2nd.
12 km (35 min, by car)

Accommodation: Hotels in Comarnic, Cornu, Breaza, Campina, Sinaia;

Lunch: You can take the lunch at Event Center, on June, 1st and 2nd. The locals offer to you, surcharge, ***traditional domestic dishes.***

RUNNERS PARTICIPATE ON THEIR OWN RESPONSIBILITY