



WTOC19

Idanha-a-Nova / Portugal

BULLETIN 2

Invitation

*World Trail
Orienteering Championships*

June 23rd - 29th 2019

<http://wtoc2019.fpo.pt>

Bulletin 2 Contents

Welcome Words	3
Mayor of Idanha-a-Nova	3
POF President	4
Venue	5
Location	5
General Map	
Idanha-a- Nova	
Monsanto	
Event Center	6
WTOC 2019 Team	7
Organizing Committee	7
Event Controllers	7
Competition	8
Classes and Competition Rules	8
Program	8
Training Possibilities	8
Embargoed Areas	9
Old Maps	10
Preliminary Course Information	10
Maps	11
Clothing	12
Accreditation and Entries	12
Deadlines	
Entry Fees	
Additional Information	14
Acommodation	14
Catering	14
Payment Info	14
Climate in June	15
Transport	16
Visa Requirements	16
Public Event	17
Contacts	17
Organizing Partners	18

Welcome Words



Mayor of Idanha-a-Nova



Armindo Jacinto
Mayor of Idanha-a-Nova

The County of Idanha-a-Nova is very pleased to cooperate in the organisation of the World Trail Orienteering Championships 2019 (WTOC'19). We are very honoured to welcome all the athletes and their teams and friends who will participate in this major sports event.

Our County has excellent natural characteristics for all sorts of outdoor sports. These unique characteristics have attracted several national and international Orienteering competitions to Idanha-a-Nova in recent years.

The world award granted to Monsanto's Orienteering Course in 2013 increased our duty to do ever more and better for this sport.

Idanha-a-Nova has all infrastructures needed to meet the standards required by major and prestigious competitions such as the WTOC'19. We count once more on the priceless support and commitment of the Portuguese Orienteering Federation and ADFA, whose outstanding organisational skills deserve the highest praise.

“We welcome you warmly to Idanha-a-Nova and we wish you a very pleasant stay.”

”

A final word for all those who will honour us with their presence in our County in 2019. We welcome you warmly to Idanha-a-Nova and we wish you a very pleasant stay. We hope that every aspect of your visit will make you want to return again and again.

We wait for you in Idanha-a-Nova!

Armindo Jacinto



Idanha-a-Nova Town Hall

Welcome Words



POF President

On behalf of Portuguese Orienteering Federation I wish you all a warm welcome to the World Trail Orienteering Championships in Idanha-a-Nova – Portugal 23 – 29 June 2019.

The event will be in the beautiful and historic city of Idanha-a-Nova a typical interior region of Portugal with several "challenges": astounding landscape, rich and vast gastronomy and the most important a very friendly community that will be happy to welcome you all.



António Amador
*Portuguese Orienteering
Federation President*

After the organization of European Trail Orienteering Championships on 2014, Portugal will organize for the first time the World Trail Orienteering Championships. For this we have the commitment of our best technicians and all the Portuguese orienteering community.

The organizational success of large events in the past allows us to face this organization with optimism being certain that we will provide an event of great quality and competitiveness.

We are sure that we will organize one of the most challenging Trail-O World Championships events, the technical quality of the terrains for this kind of events and the dedication and quality of all the resources involved give us the confidence for this.

WTOC'19 waits for you,

António Amador



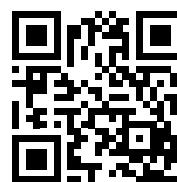
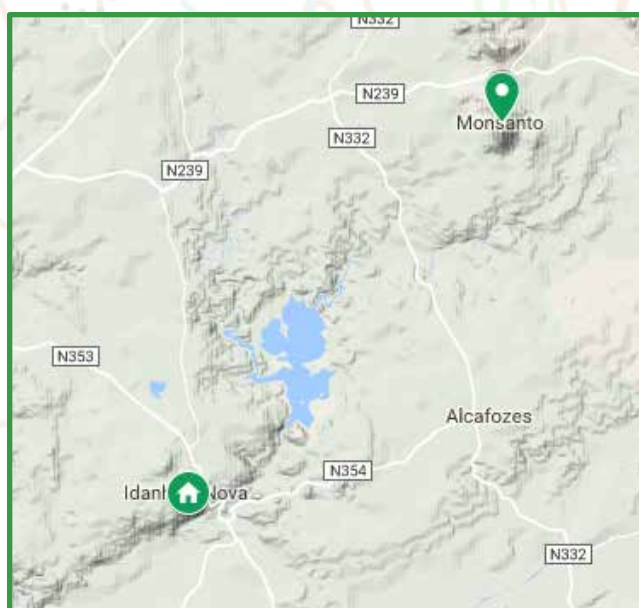
Source: <http://bit.ly/2snLVSc>

Venue

Location

General Map

The World Trail Orienteering Championships 2019 will be held in the county of Idanha-a-Nova, located in the eastern center of Portugal.



<http://bit.ly/2sq3e4O>

Idanha-a-Nova is about 265km away from Lisbon and 300km from Oporto by car.

All event competitions will be setup and held around the town of Idanha-a-Nova and the granite mountain of Monsanto popularly known as "the most portuguese village of Portugal".

Venue

Idanha-a- Nova

Idanha-a-Nova is a municipality in the district of Castelo Branco in east-central Portugal, is halfway from Lisbon and Madrid. Its territory touch Penamacor in the north, Fundão in the west and Spain borders on east and south.

The population in 2017 was 8450 in an area of 1416.34 km², making it one of the largest municipalities in Portugal.

Idanha-a-Nova is the starting point of a cultural adventure and Centro Cultural Raiano is the right place to visit in order to get a sample of what to see and what to learn about the town and its surroundings.

From the local Castle, the view cannot reach the typical Penha Garcia, a beautiful village spread in a mountain slope, or the archeological ruins located at Idanha-a-Velha, the roman old city of Egitânia, or the thermal village of Monfortinho. You must get there during your stay.

Monsanto

Perched on a hilltop that oversees all the surrounding horizons, the village of Monsanto has a unique charm that has earned it two titles in the 20th century – the Most Portuguese Village in Portugal in 1938 and Historical Village in 1995. Monsanto is one of the region's main tourist attractions and offers visitors a unique experience. It was granted charters by King Afonso Henriques, King Sancho I, King Sancho II and King Manuel. The oldest part is also the highest point, where the Knights Templar built a wall with the donjon.

Source: <http://bit.ly/2nzTkeb>

Event Center

The WTOC 2019 Event Center will be located in Raiano Cultural Center in Idanha-a-Nova.

GPS Coordinates - Raiano Cultural Center: (39.927003, -7.244004)



Raiano Cultural Center

WTOC 2019 Team

Organizing Committee

Augusto Almeida

Event Director

Rui Mora

Administrative Director

António Amador

Field Director

Jacinto Eleutério

Logistics Director

André Mora

IT

Patricia Casalinho

Event Secretary

Fernando Costa

Media Coordinator

Alexandre Reis

Map Maker

Luís Gonçalves

Course Setter

Event Controllers

Damir Gobec (CRO)

IOF Senior Event Advisor

Ivana Gobec (CRO)

IOF Assistant Event Advisor

Nuno Pires (POR)

National Controller

Monsanto



Source: <http://bit.ly/2HcvnRw>

Competition

Classes and Competition Rules

In the individual PreO competitions and in the TrailO Relay there is one Open class and one Paralympic class. In the TempO competition there is a single class (Open).

The competition rules for IOF Trail Orienteering Events, valid from January 1st 2018, shall apply to the WTOC 2019. Rule updates until the event may override current ones. Copy of the rules is available for download in the official IOF website. Please follow the link below.

<http://bit.ly/2sq3qky>

Program

Date	Event	Location
Sun, June 23rd	Arrivals Opening Ceremony	Idanha-a-Nova
Mon, June 24th	Model PreO 1	Idanha-a-Nova
Tue, June 25th	PreO 1	Idanha-a-Nova
Wed, June 26th	Model PreO 2 / Relay Model TempO	Cidral
Thu, June 27th	PreO 2	Relva
Fri, June 28th	Relay	Cidral
Sat, June 29th	TempO Qualification TempO Final Closing Ceremony	Cidral São Pedro de Vir-a-Corça Idanha-a-Nova

Training Possibilities

Training possibilities are being planned for the weekend before WTOC 2019 (June 22nd and 23rd) in similar and relevant terrains of WTOC.

A ECTO 2019 candidate event in Penamacor (35km away of Idanha-a-Nova) is currently waiting approval.

Please check WTOC site for available information during late Summer 2018.

Competition

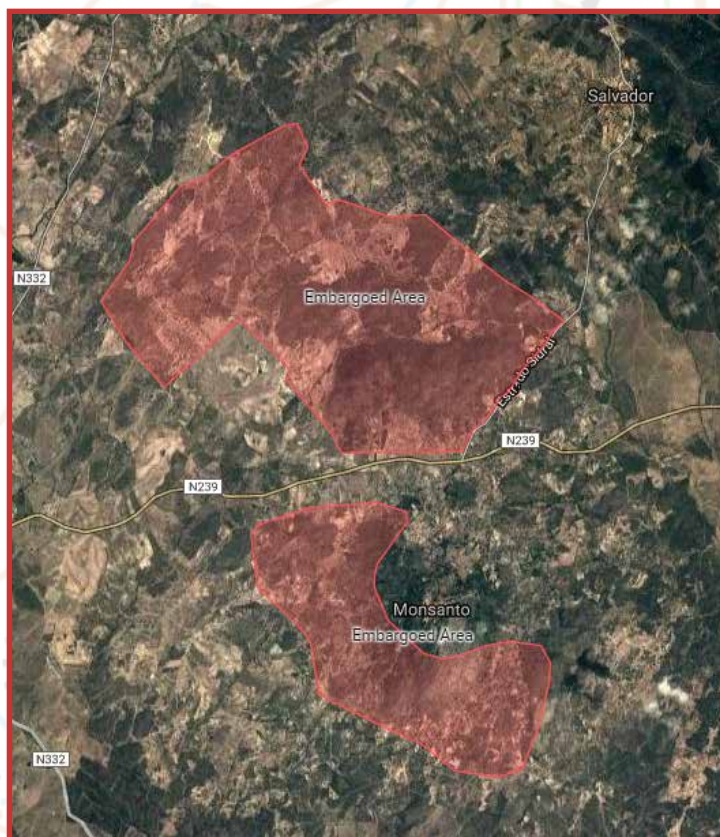
Embargoed Areas

The organizing team designated three embargoed areas for WTOC 2019:

1. Idanha-a-Nova
2. Monsanto
3. Cidral



<http://bit.ly/2xAjiGg>



All embargoed areas are out of bounds for all potential WTOC 2019 team members (competitors, officials, escorts, etc.) and any other person who may influence the results of the competitions by any knowledge of the terrain.

The embargo is valid from June 1st, 2017 until June 29th, 2019. Accommodation during WTOC 2019 must be located outside the designated areas. All car movement and parking must respect the embargoed roads in full.

Any permitted access inside the embargoed areas or lifted embargo areas will be announced prior and during the WTOC 2019.

Competition

Old Maps

Full map list and images of the old maps are available at the WTOC 2019 site for viewing and download.

<http://bit.ly/2MM9hIY>

Preliminary Course Information

In the next table the approximate course length and climb for each model and competition course is described along with additional map information.

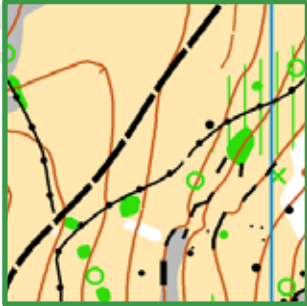
Course	Length / Climb	Map	Old Map Area
Model PreO 1	1300m / 15m	Quinta de Valongo	Idanha-a-Nova Norte
PreO 1	1400m / 15m	Quinta de Valongo	Idanha-a-Nova Norte
Model PreO 2 / Relay / Tempo	1200m / 15m	Cidral	Cidral
PreO 2	900m / 5m	Quinta dos Ciprestes	No previous Map
Relay	3700m / 75m (optimal team route)	Cidral	Cidral
TempO Qualification	1100m / 20m	Cidral	Cidral
TempO Final	600m / 60m	São Pedro de Vir-a-Corça	São Pedro Vir-a-Corça

Accessibility for mobility impaired competitors

All competitions will be set on good dirt paths mostly with low slope. In the short steep parts there will be extra pushers. Tempo Final will be in a steep tarmac road with extra pushers along the whole course as needed.

Competition

Maps



Quinta de Valongo

1:4000, e=2,5m, ISOM 2017

Mediterranean terrain with a mix of open and semi open areas;
Low slope; Good variety of rocky and contour details;

Map for Model PreO 1 and PreO 1

Last FootO competitions held in 2013. Never used for TrailO



Cidral

1:4000, e=2,5m, ISOM 2017

Mediterranean terrain with a mix of open and semi open areas;
Medium slope; Good variety of rocky and contour details;

Map for Model TempO / PreO 2 / Relay, Relay and TempO Qualification

Last FootO competitions held in 2014. Never used for TrailO.



Quinta dos Ciprestes

1:4000, e=2,5m, ISOM 2017

Mediterranean terrain with a mix of open and semi open areas;
Medium slope; Good variety of rocky and contour details;

Map for PreO 2

New Map. Terrain never used for Orienteering.



São Pedro Vir-a-Corça

1:4000, e=2,5m, ISOM 2017

Mediterranean terrain; Hilly; Big boulders;

Map for TempO Final

Last FootO competitions held in 2013. Never used for TrailO.

Competition

Clothing

During Competitions, all athletes should use their national competition uniforms. The competitor country must be always be identifiable.

Hats and caps are highly recommended as competitions will probably be in hot and sunny days. Please use sunscreen.

There is no special recommended footwear. All competitions will be set on dirt tracks except TempO Final held at tarmac.

There may be some ticks and mosquitoes in competition terrains. Please use insect repellent on body and clothing.

In the Opening and Medal Ceremonies the athletes should wear their national uniform. At the Flower Ceremonies held in Arenas, the athletes may use their competition uniforms.

Do not use hats, caps, sunglasses or any special items besides the proper clothing at Flower and Medal Ceremonies.

Accreditation and Entries

All WTOC 2019 accreditation and entries must be done through IOF Eventor online service.

<http://bit.ly/2ufZ7JE>

Deadlines

All preliminary entries should be submitted by **April 23, 2019** (team size).

Entry payments must be done by **May 12, 2019**.

Final entries should be submitted by **June 13, 2019** (team names).



Idanha-a-Velha

Source: <http://bit.ly/2xGID2G>

Competition



Entry Fees

Accreditation and Entry Fees	Amount
Accreditation for Team Officials	105 Eur
Accreditation for Athletes	105 Eur
Accreditation for Accompanying Persons	50 Eur
Entry for TempO	70 Eur
Entry for PreO	100 Eur
Entry for Relay (per team)	120 Eur
Banquet	30 Eur

Accreditation fee for Athletes and Team Officials includes participation in the model events, access to allowed competition areas, competition maps and banquet.

Accredited Accompanying Persons get access to allowed competition areas.

The entry fee for Athletes includes participation in the relevant WTOC competitions (qualification and finals, when qualified).

There is no limit on the number of accredited Team Officials or Accompanying Persons.

Entries will not be valid until the payment is confirmed. Check Payment Info for details.

Banquet and additional services will be available on Eventor for your convenience.



Source: <http://bit.ly/2LRyit7>

Additional Information

Acommodation

The organization will provide accommodation possibilities at special WTOC prices. We recommend that you make reservations through the organization to benefit for best discount rates.

Please check WTOC site for details, prices and conditions during late Summer 2018 where all hotel units will be disclosed.

Note that the availability of adapted rooms is limited in Idanha-a-Nova county. As a general rule each hotel only has one adapted room and business class rooms are suitable for wheelchair users.

After the accommodation is requested, only after confirmation and subsequent payment the accommodation become effective.

All payments are to be made to the Portuguese Orienteering Federation - FPO.

Catering

Lunch boxes will be available on request in the Arenas of competition days (PreO 1, PreO 2, Tempo Qualification and Relay).

Lunch is priced 7,50 Euros for each box and pre-orders can be made on Eventor as an additional service until **June 13, 2019**.

Payment Info

All payments are to be made to the Portuguese Orienteering Federation - FPO (all charges are paid by sender).

Account owner and Address:

Federação Portuguesa de Orientação-FPO
Estrada da Vieira, 4 - Bairro Florestal – Pedreães
PT 2430-401 Marinha Grande – Portugal

Bank Name and Address:

Caixa Geral de Depósitos - Agência da Marinha Grande
Rua Bernardino José Gomes
PT 2430-241 Marinha Grande – Portugal

Payment Details:

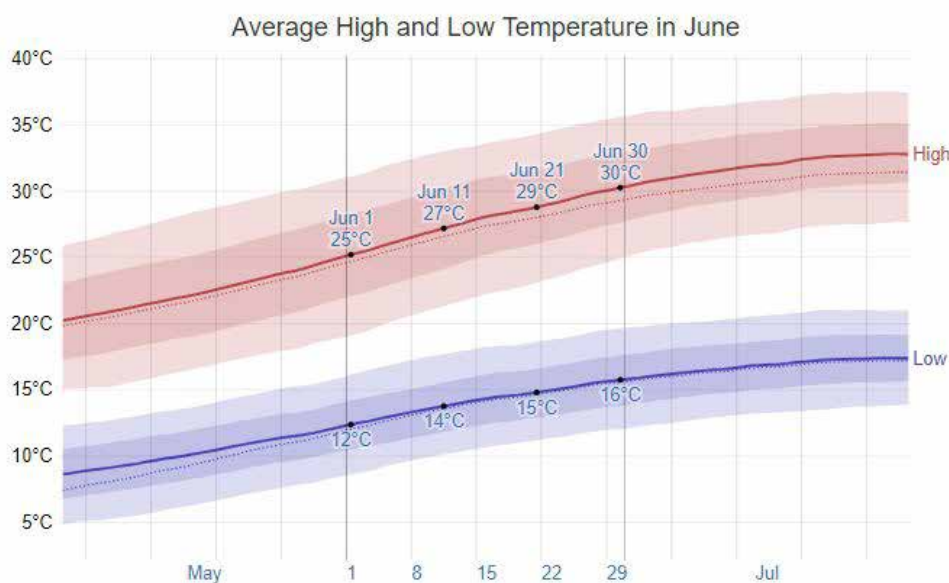
BIC/SWIFT: CGDIPTPL
IBAN: PT50003504410004259693027

Additional Information

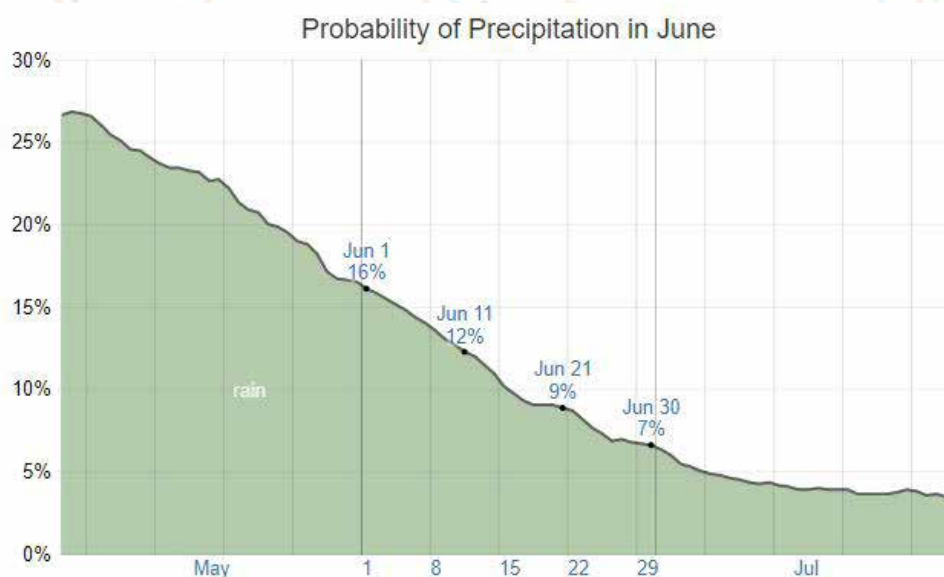
Climate in June

Daily high temperatures increase by 5°C during June, from 25°C to 30°C, rarely falling below 19°C or exceeding 36°C.

Daily low temperatures increase by 3°C during the month, from 12°C to 16°C, rarely falling below 9°C or exceeding 20°C.



In Idanha-a-Nova, the chance of a wet day over the course of June is very rapidly decreasing, starting the month at 16% and ending it at 7%.



Source: <http://bit.ly/2vwAw3V>

To know more about Idanha-a-Nova statistical climate data, please follow link above.

For weather during WTOC week, please consult the Portuguese Institute for Sea and Atmosphere forecast for Idanha-a-Nova in <http://bit.ly/2AUeBbZ>

Additional Information

Transport

Idanha-a-Nova is reachable from Lisbon and Oporto by car, by bus or a combination of train (to Castelo Branco) and bus. Car rental from airport is the best solution to get to WTOC.

For Bus information, consult Rede Expressos website in <http://bit.ly/2OtKlqf>.

For train information, consult Comboios de Portugal website in <http://bit.ly/2M8TeZC>.

Idanha-a-Nova county does not have a public transport system to provide compatible movement between WTOC stages. Teams should use their own transport to all WTOC stages. Parking areas will be defined for each day.

If you plan to come to Idanha without own transport, please contact Portuguese Orienteering Federation in advance by e-mail to study a suitable solution.

Visa Requirements

To enter Portugal, citizens outside Schengen Areas must apply for a Visa. Some additional non-Schengen countries citizens do not require Visa for short-term visits.

Information for the need and Request for visas should be submitted at your nearest Portuguese Embassy or Consulate.

To find the nearest Portugal diplomatic office click in the following link <http://bit.ly/2Md4y6r>



Monsanto

Source: <http://bit.ly/2nzTkeb>

Additional Information

Public Event

A Open Public Event will be held on WTOC courses, after official competitions, on the same days. The Open Public Event includes Model PreO 1, PreO 1, Model PreO 2, PreO 2 and TempO Qualification courses.

Entry fee for Open Public PreO 1 and PreO 2 is **15 Eur** per course, for Open TempO is **10 Eur** and for Open Model PreO 1 and Model PreO 2 is **5 Eur** per course.

All accredited Team Officials, Athletes and Accompanying Persons must register entries in Eventor for Open Public PreO 1, PreO 2 and TempO.

All accredited Accompanying Persons must register entries in Eventor for Open Model PreO 1, PreO 2 and TempO (model events are not included in WTOC accreditation).

General entries (WTOC non-accredited persons) for Open Public courses must be registered in Orioasis, the Portuguese Orienteering Federation online entry system.

The deadline for all entries for Open Public event (Eventor and Orioasis) is **June 13, 2019**. Detailed information for Open Public Event will be published on WTOC website and in Bulletin 3.

Contacts

FPO - Federação Portuguesa de Orientação

Estrada da Vieira, 4 – Bairro Florestal – Pedreanes
2430-401 Marinha Grande
Portugal

Phone: +351 244575074
Email: wtoc2019@fpo.pt
Website: <http://wtoc2019.fpo.pt>



Idanha-a-Nova Dam

Source: <http://bit.ly/2P8S6TK>

Organizing Partners



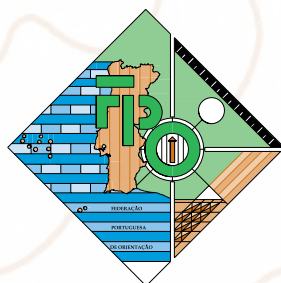
International Orienteering Federation



INTERNATIONAL ORIENTEERING FEDERATION

<http://www.orienteing.org>

Portuguese Orienteering Federation



<http://www.fpo.pt>

Municipality of Idanha-a-Nova



<http://www.cm-idanhanova.pt>

Portuguese Institute of Sports and Youth



INSTITUTO PORTUGUÊS
DO DESPORTO
E JUVENTUDE. I. P.

<http://www.ipdj.pt>

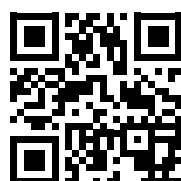
World Trail Orienteering Championships 2019



WTOC19

Idanha-a-Nova / Portugal

June 23rd - 29th 2019



<http://wtoc2019.fpo.pt>